

three inches = one foot
one and one-half inches = one foot
one inch = one foot
three-quarters inch = one foot
one-half inch = one foot
three-eighths inch = one foot
one-quarter inch = one foot
one-eighth inch = one foot

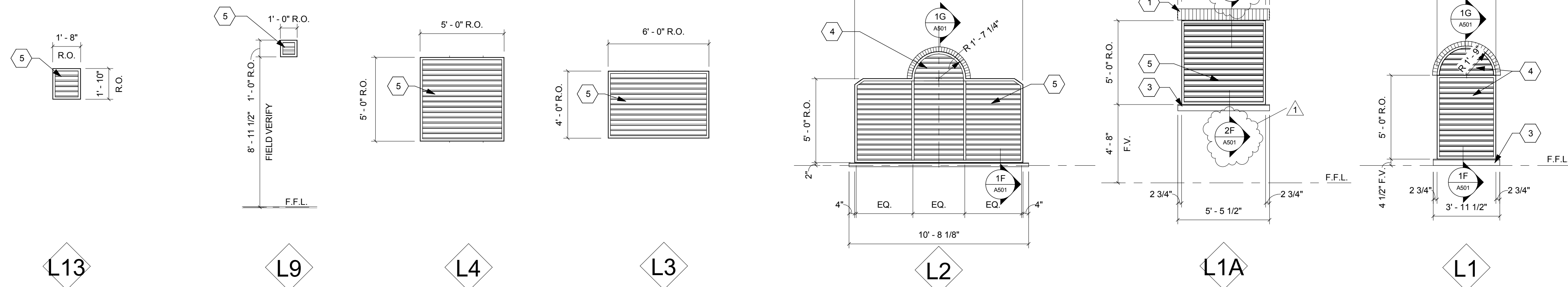
GENERAL NOTES

- All wood blocking / framing shall be fire retardant U.N.O.
- Paint all exterior wood surfaces Pure White, Sherwin Williams, SW 7005.
- Elevation 100'-0" equals 703.15'.
- New brick veneer shall align with existing and match all existing conditions.
- Verify all conditions prior to fabrication, erection and installation.
- See A600 series sheets for stair finishes.

FULLY SPRINKLERED

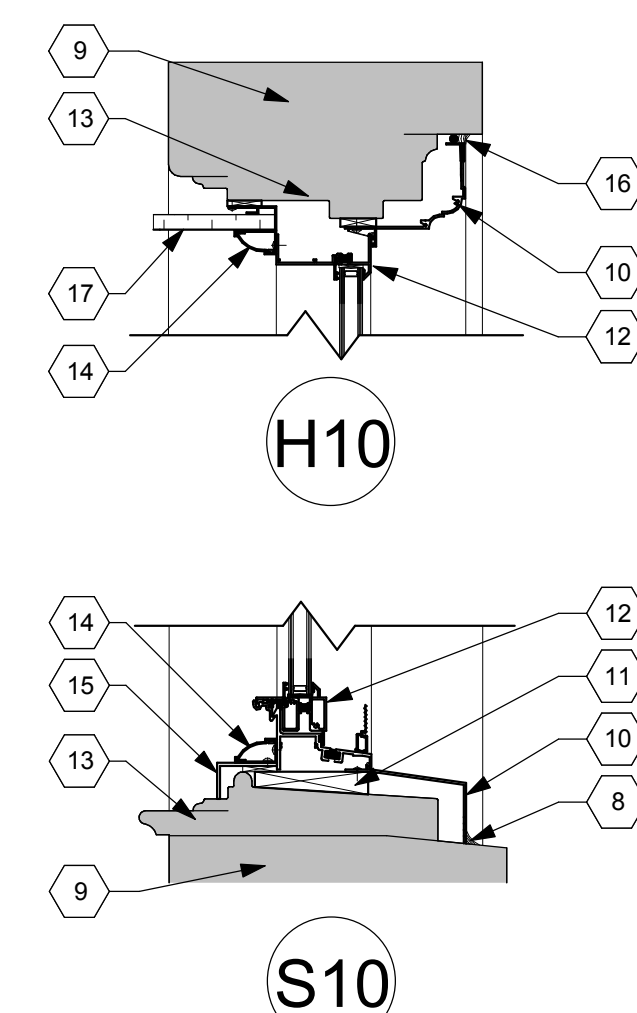
WINDOW TYPE NOTES

- Brick soldier course to match existing building. Typical at all new windows.
- 1" tempered insulated glass with low-e coating. See Specifications.
- Cast stone sill. See Detail 10 on Sheet A506.
- Pre-finished aluminum louver with insulated blank-off panel.
- Pre-finished aluminum louver, with integral bird screen.
- 5/8" Type "X" gypsum board. See Wall Types.
- Metal stud framing.
- Continuous sealant.
- Existing structure.
- Aluminum panning system by aluminum window manufacturer to most closely match historical profile as approved by the COTR.
- Pressure-treated wood shim.
- Single hung aluminum window.
- Existing window blocking and trim to remain. Prep, prime and paint to match window frame.
- Aluminum trim cover to match window finish.
- Continuous aluminum trim to match window finish.
- Backer rod and sealant.
- Ceiling return. See Reflected Ceiling Plan for height and material.
- 1" tempered insulated spandrel glazing.
- 1" heat strengthen glass with low-e coating. See specifications.
- See Reflected Ceiling Plans for ceiling type & height.
- Fiberglass batt insulation.
- Not Used.
- Not Used.
- Galvanized steel lintel. See Structural Drawings.
- Continuous thru-wall flashing with end dams, per all SMACNA requirements.
- Factory-finished thermally-broken aluminum storefront / window system with 1" insulated glazing. See Specifications.
- Wood shims as required.
- 10 Mil vapor barrier.
- Facebrick to match existing building coursing. Tooth into existing masonry and align with existing face of building.
- Air & moisture barrier.
- Solid surface window stool. See Finish Schedule.
- Wood window apron trim, paint to match frame, AW# CAS-2078.
- Wide stile & rail storefront entrance. Secure to existing concrete slab per manufacturer's instructions.
- Aluminum threshold, set in mastic bed.
- Door jamb beyond.
- Exterior aluminum door assembly.
- Concrete foundation wall. See Structural Drawings.
- Pressure-treated wood blocking.
- Full joint weep @ 24" O.C. Intent is for weep to be fully open for drainage & air circulation.
- Aluminum storefront window mullion.
- Stand-off anchor bar centered on each vertical mullion, per storefront manufacturer.
- Wood Safety Rail, AW# CHR-6021, stain to match PL-1.
- Integral end cap, per storefront manufacturer.
- Stand-off anchor bar beyond. Center anchor bar on centerline of vertical mullion.
- Safety Rail (beyond) refer to Specifications. See detail 1/A603.
- Wall base, see Finish Schedule.
- Rigid insulation.
- Steel tube column. See Structural Drawings.
- Eased all edges of wood safety rail.



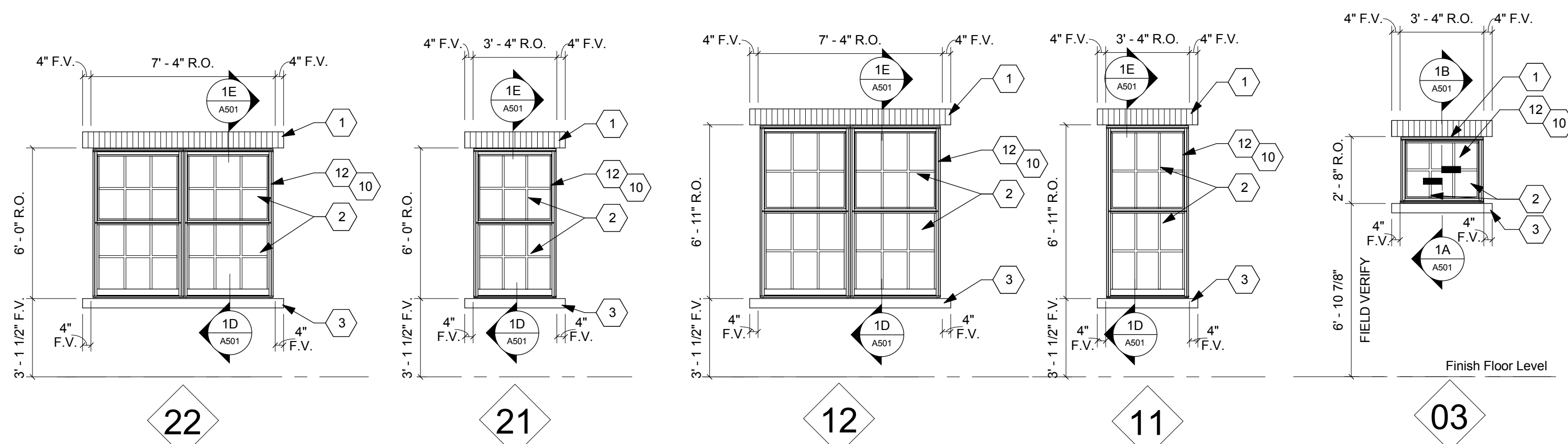
LOUVER TYPES

Scale: 1/4" = 1'-0"



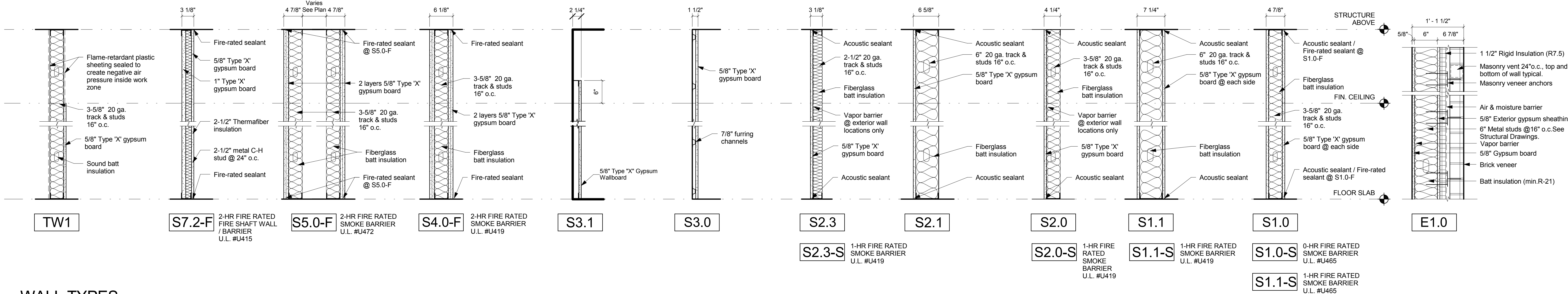
Existing Window Details

Scale: 1 1/2" = 1'-0"



Window Types

Scale: 1/4" = 1'-0"



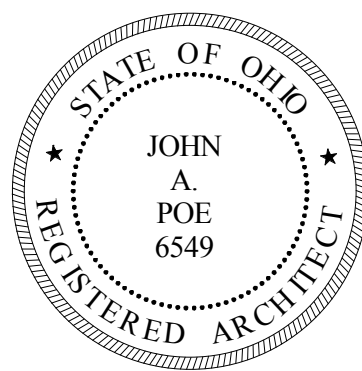
WALL TYPES

Scale: N.T.S.

CONSULTANTS:

ARCHITECT/ENGINEERS:

JOHN POE ARCHITECTS



116 EAST THIRD STREET
DAYTON, OHIO
45402-2130
937 461 3290 PHONE
937 461 0280 FAX
jap@johnpoe.com

Drawing Title

WALL TYPES & WINDOW DETAILS

Approved: Project Director

Project Title

RENOVATE CLC BUILDING 211
WEST

Location

Chillicothe, Ohio

Date

09/06/2013

Checked

WS

Drawn

MD/VR

Project No.

VA Project No. 538-107
JPA Project No. 11001.00

Building Number

211

Drawing Number

A602

Dwg. 30 of 132

Office of
Construction
and Facilities
Management

Department of
Veterans Affairs