

IF THIS SHEET IS NOT 30" x 42"
FULL SIZE, USE GRAPHIC SCALES

one inch = one foot

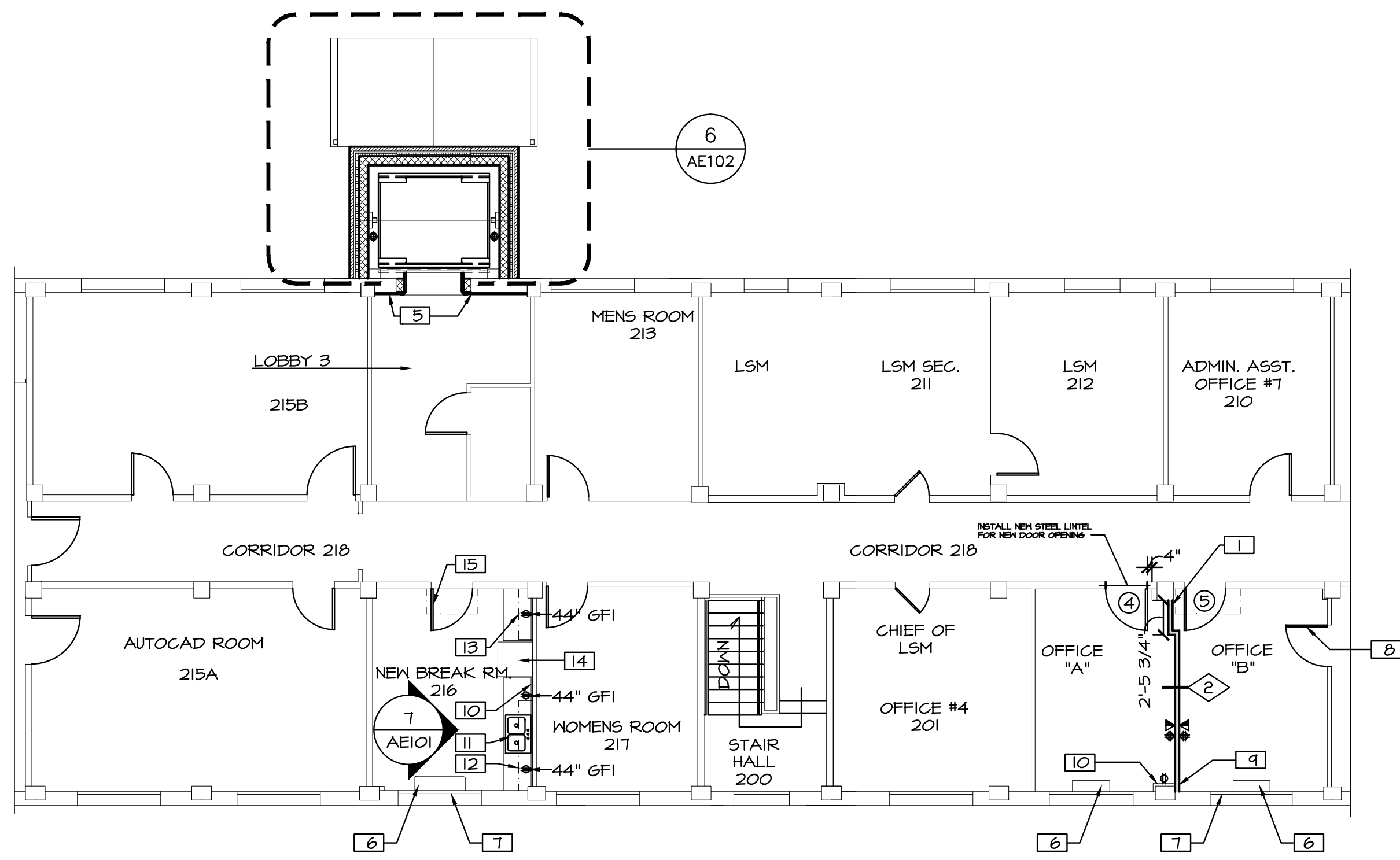
three-quarter inch = one foot

one-half inch = one foot

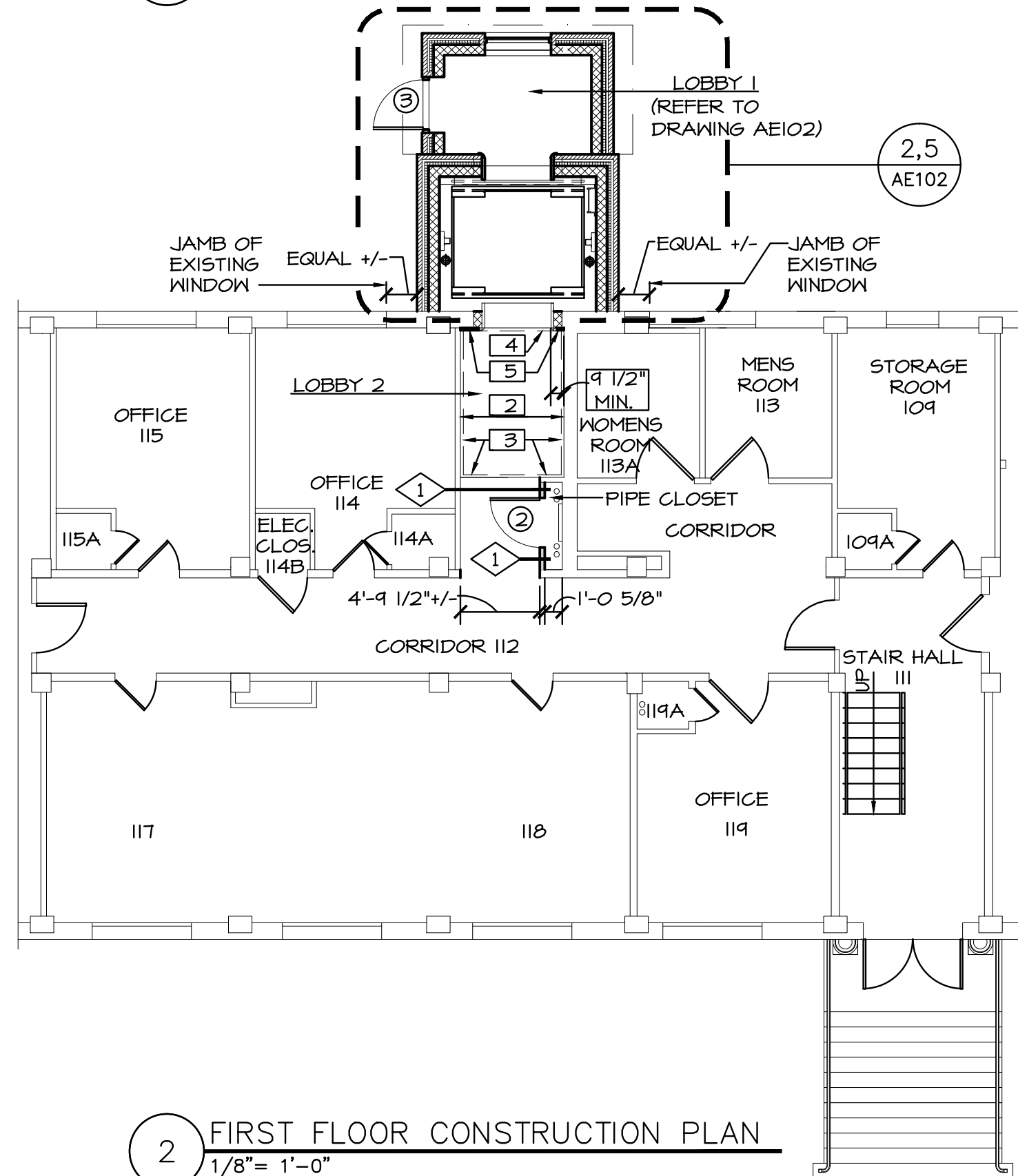
three-eighths inch = one foot

one-quarter inch = one foot

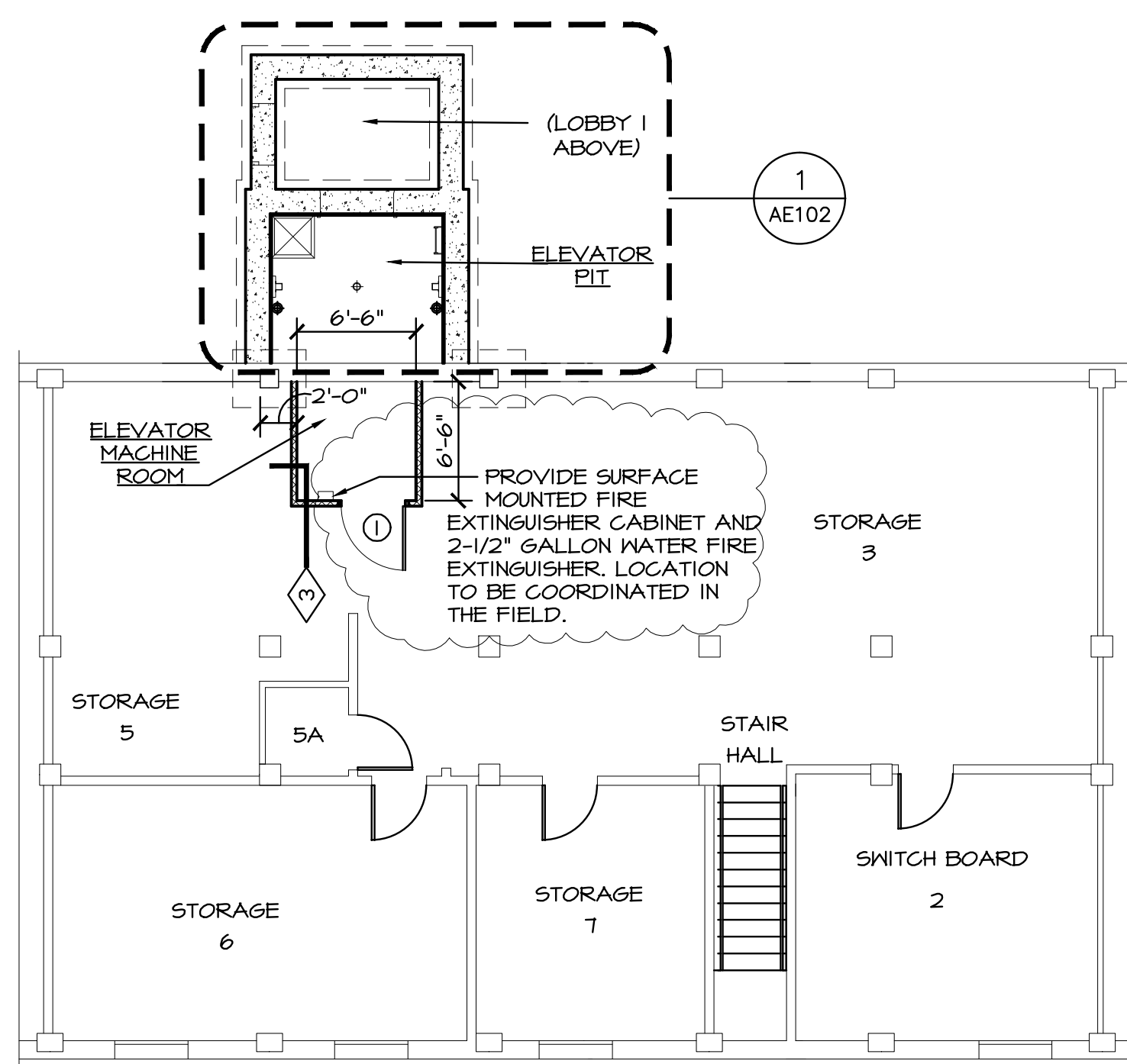
one-eighth inch = one foot



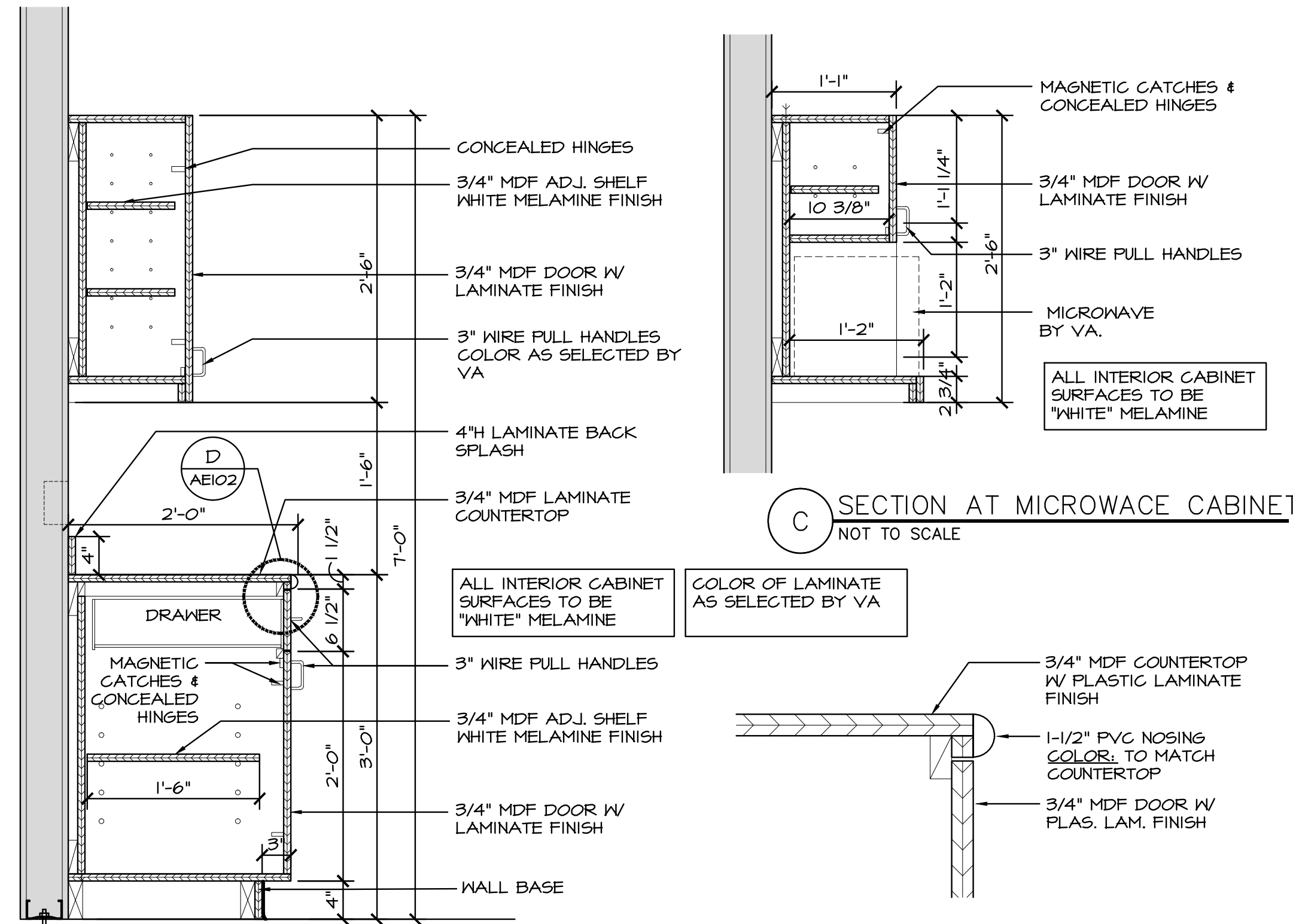
3 SECOND FLOOR CONSTRUCTION PLAN
1/8" = 1'-0"



2 FIRST FLOOR CONSTRUCTION PLAN
1/8" = 1'-0"



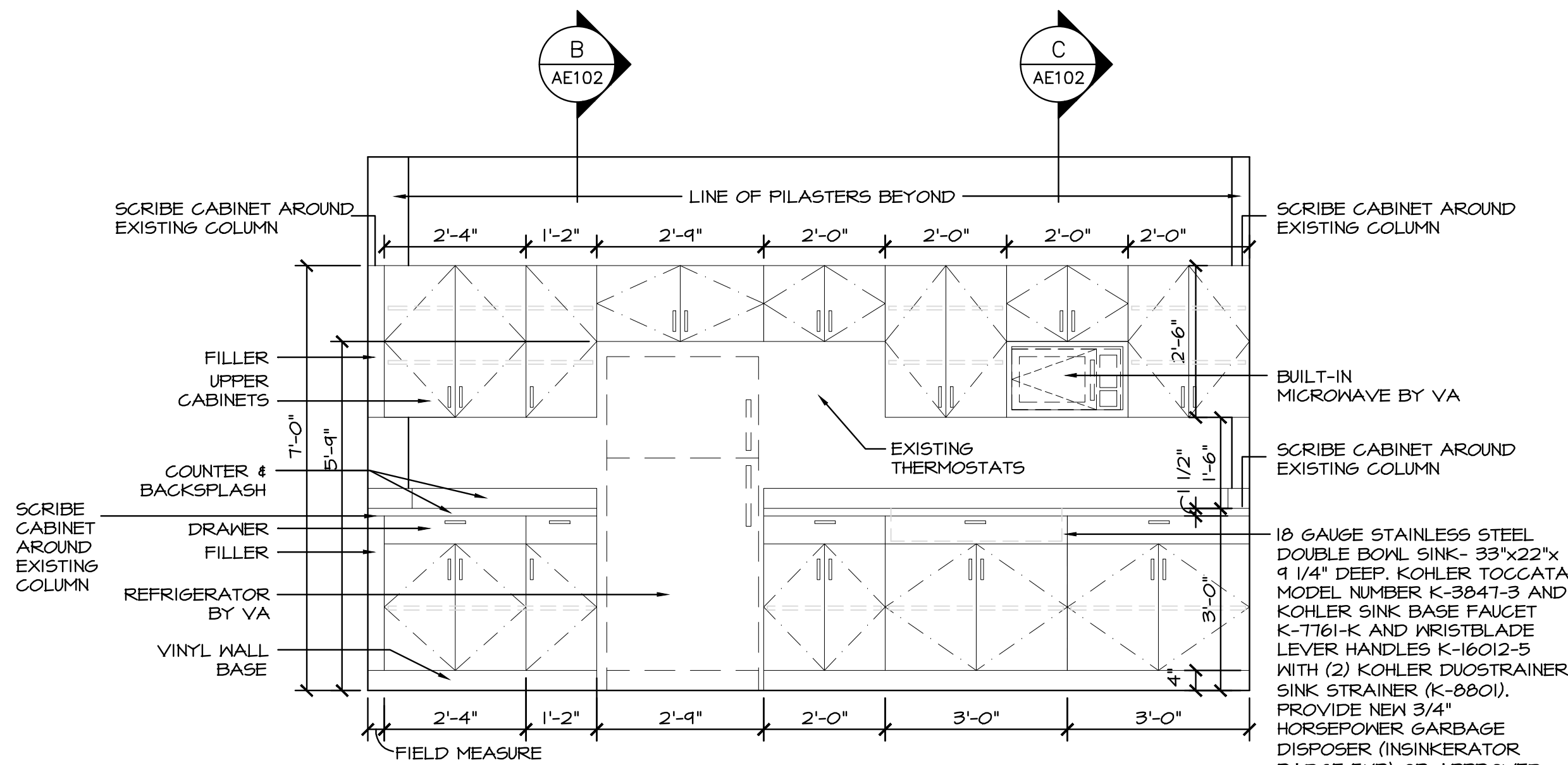
1 BASEMENT CONSTRUCTION PLAN
1/8" = 1'-0"



C SECTION AT MICROWAVE CABINET
NOT TO SCALE

B DETAIL AT TYPICAL CABINET
NOT TO SCALE

D DETAIL AT COUNTERTOP EDGE
NOT TO SCALE



7 ELEVATION OF CABINETS IN BREAKROOM
1/2" = 1'-0"

WORK NOTES

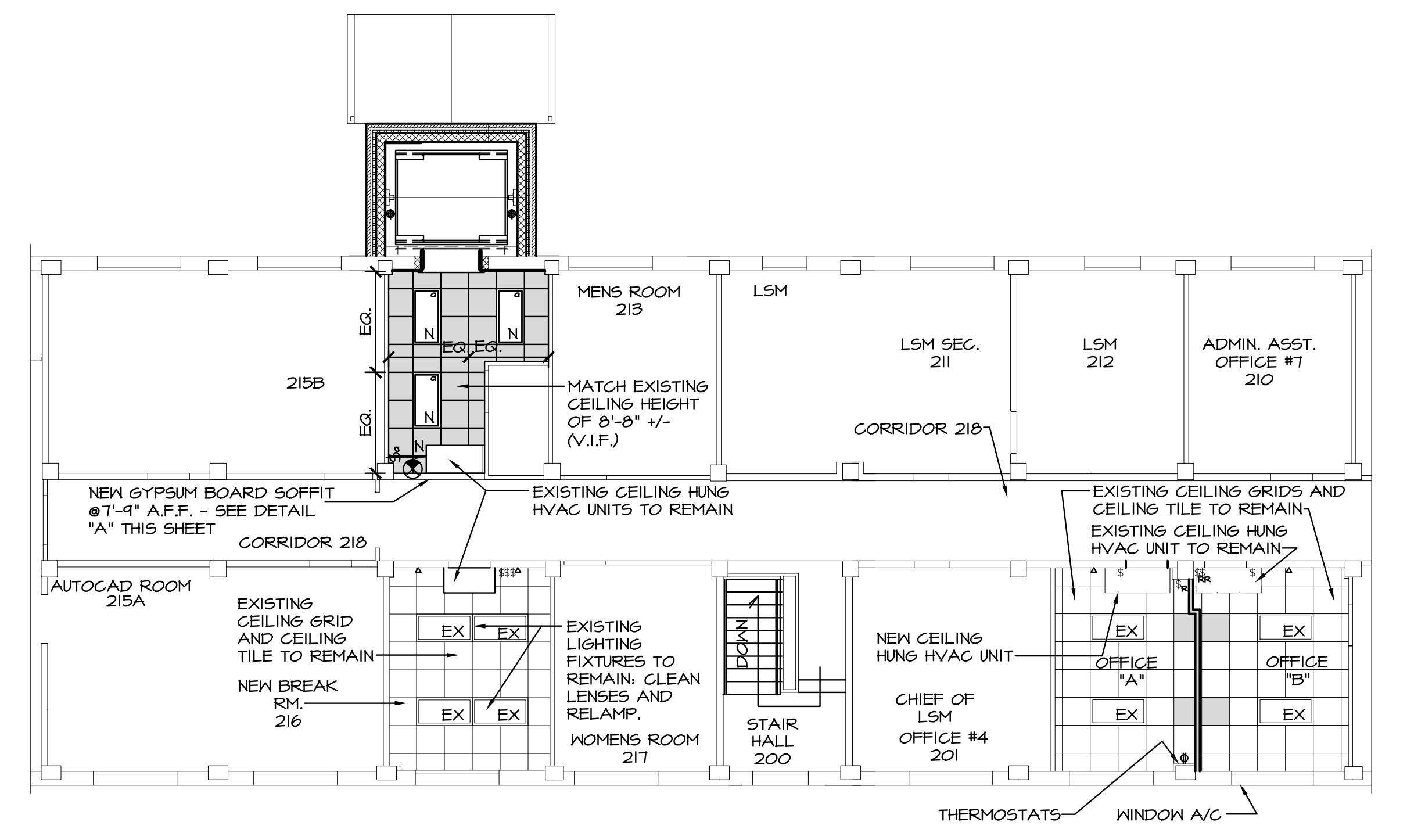
- SET FACE OF STUDS 5/8" BEHIND EXISTING FINISHED WALL SURFACE
- 4" CONCRETE OVER 1 1/2" METAL DECK (ALIGN TOP OF NEW CONCRETE SLAB (EXIST. CONCRETE SLAB) - REFER TO STRUCTURAL DRAWINGS)
- METAL ANGLE EXPANSION BOLTED TO FACE OF EDGE BEAM, TO SUPPORT NEW METAL FLOOR DECK (SEE STRUCTURAL DRAWINGS)
- METAL ANGLE EXPANSION BOLTED TO FACE OF EXTERIOR WALL, TO SUPPORT NEW METAL FLOOR DECK (SEE STRUCTURAL DRAWINGS)
- 5/8" GYPSUM BOARD ON 1/8" HAT CHANNELS @ 24" O.C.
- EXISTING RADIATOR TO REMAIN
- EXISTING WINDOW A/C UNIT TO REMAIN
- EXISTING DOOR TO REMAIN
- HOLD TRACK TIGHT TO PILASTER
- LOCATION OF EXISTING THERMOSTATS
- DOUBLE BOWL STAINLESS STEEL SINK W/GARBAGE DISPOSAL
- MICROWAVE OVEN IN WALL CABINET
- LINE OF WALL CABINETS (TYPICAL).
- 30" WIDE, 20 CUBIC FT. REFRIGERATOR
- EXISTING DOOR AND HARDWARE TO REMAIN.

LEGEND

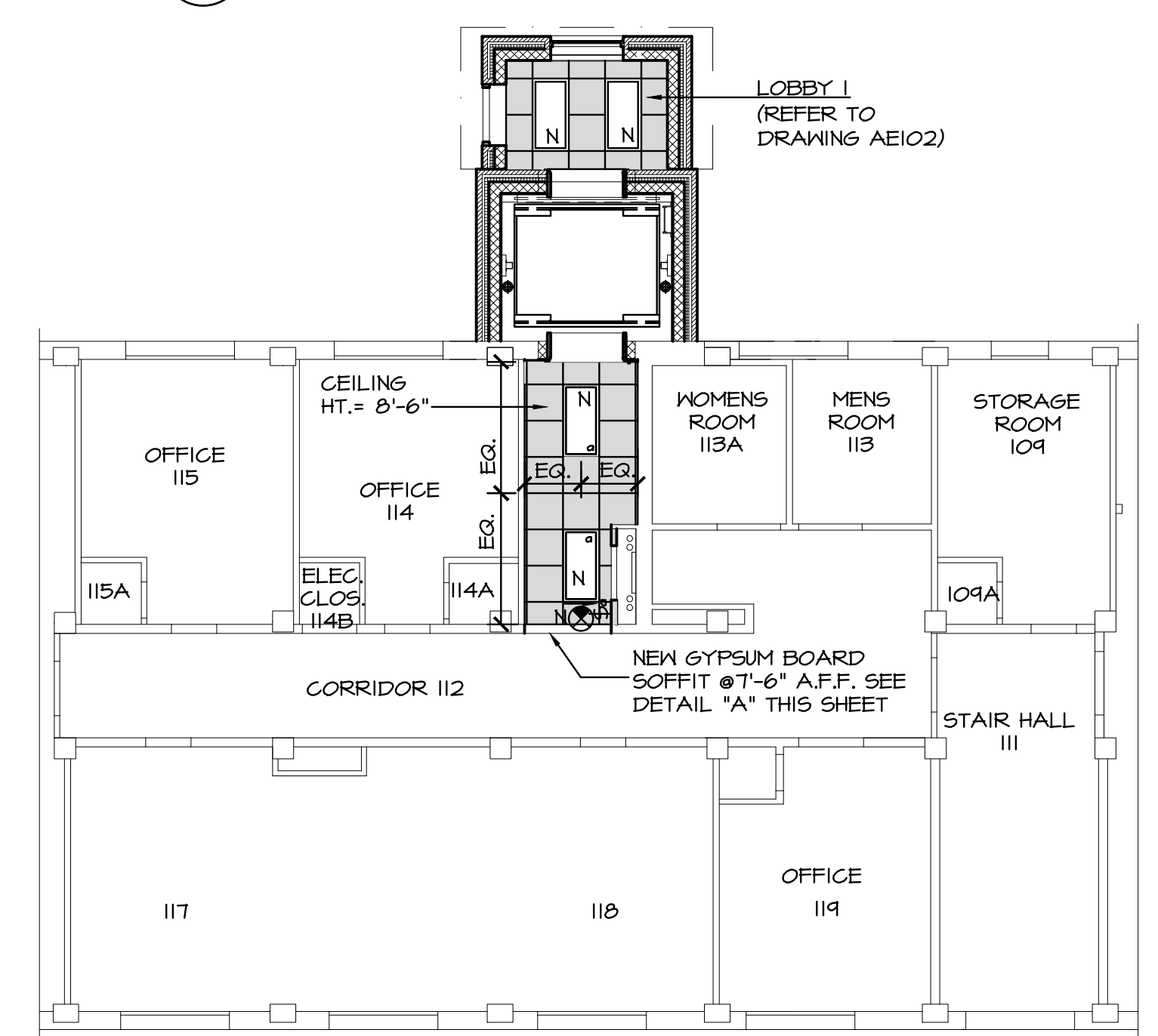
- EXISTING CONSTRUCTION TO REMAIN
- NEW METAL STUD PARTITION
- NEW G.M.W. WALL (UL, MIN. 1 HOUR LABELED)
- NEW MASONRY CAVITY WALL: SEE DETAIL PLANS/ SHEET AE102.
- NEW DOOR AND FRAME. SEE DOOR SCHEDULE/ SHEET AE601.
- NEW 6 F.I. DUPLEX RECEPTACLE, WITH HEIGHT NOTED ABOVE FINISHED FLOOR.
- NEW QUADRIplex RECEPTACLE AT HEIGHT TO MATCH EXISTING.
- DATA / PHONE JACK COMBINATION AT HEIGHT TO MATCH EXISTING.

GENERAL NOTES

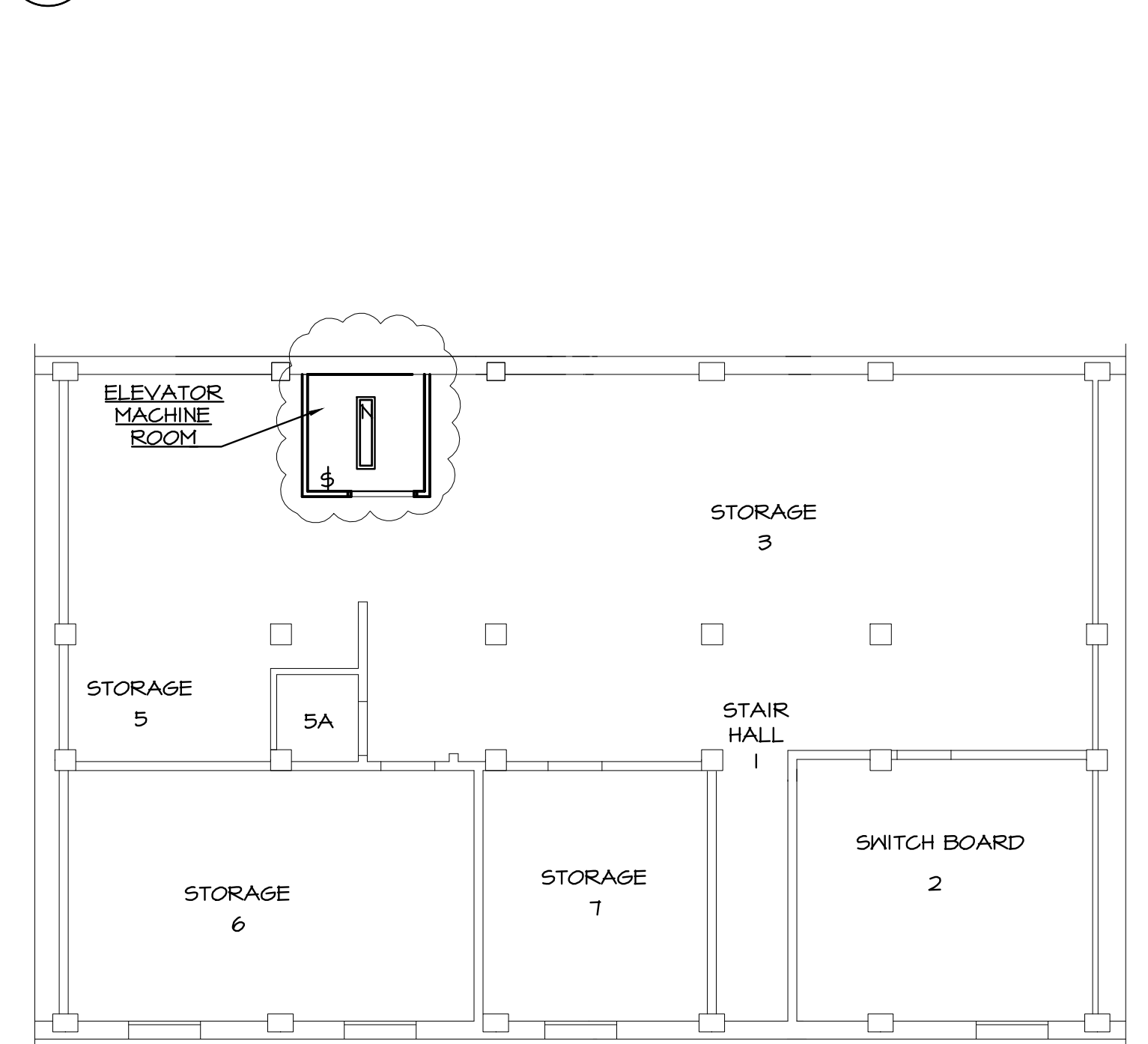
- METAL STUDS LOCATED AT EXTERIOR WALLS SHALL BE 10 GAUGE, SHALL HAVE A VAPOR BARRIER AND 6" GLASS FIBER INSULATION.
- CONTRACTOR SHALL PROVIDE NEW CEILING TILES TO MATCH EXISTING IN OFFICES "A" AND "B" WHERE EXISTING LIGHTING FIXTURES ARE TO BE REMOVED. CONTRACTOR SHALL ALSO PROVIDE NEW SECTIONS OF CEILING GRID TO MATCH EXISTING, WHERE EXISTING LIGHTING FIXTURES ARE TO BE REMOVED.



6 SECOND FLOOR REFLECTED CEILING PLAN
1/8" = 1'-0"



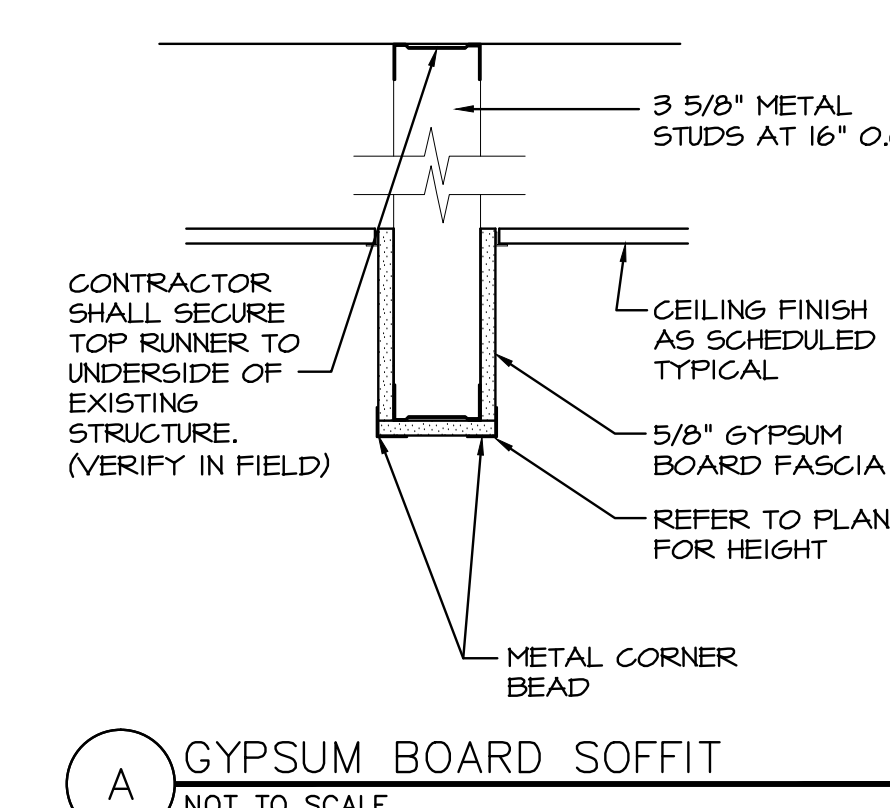
5 FIRST FLOOR REFLECTED CEILING PLAN
1/8" = 1'-0"



4 BASEMENT REFLECTED CEILING PLAN
1/8" = 1'-0"

LEGEND

- EXISTING LIGHTING FIXTURE TO REMAIN. CLEAN LENSES AND RELAMP.
- NEW 2x4' FLUORESCENT LIGHTING FIXTURE TO MATCH EXISTING (V.I.F.) INDICATES CIRCUIT
- NEW 1x4' CHAIN HUNG FLUORESCENT LIGHTING FIXTURE WITH (2) 44W-T8 LAMPS. PROVIDE GUARD INDICATES CIRCUIT
- SINGLE POLE RECESSED LIGHT SWITCH INDICATES CIRCUIT
- EXISTING SIDEHALL SPRINKLER HEAD TO REMAIN (V.I.F.)
- EXISTING LIGHT SWITCH TO BE RELOCATED TO SUIT NEW DOOR SWINGS
- EXISTING SPEAKER TO BE CLEANED, RELOCATED AND REUSED
- COMBINATION ILLUMINATED EXIT SIGN/ EMERGENCY LIGHTS, WALL MOUNTED, AS SPECIFIED
- ORIENTATION OF ILLUMINATED FACE
- ORIENTATION OF DIRECTIONAL ARROWS
- NEW 2x2' AC. TILE CEILING SYSTEM AND ACOUSTIC TILE TO MATCH EXISTING (V.I.F.)



A GYPSUM BOARD SOFFIT
NOT TO SCALE

Revisions	Date
1. VA FORM 08-6231, DEC 1989	

	KENNETH IRVING, ARCHITECT P.C. 42 MEMORIAL PLAZA SUITE 301, PLEASANTVILLE, N.J. 10570 PHONE: (914) 747-0002 • E-MAIL: mandraoe@kirarch.com • FAX: (914) 747-9211
--	---

NOTE AND READ CAREFULLY: The Contractor shall consult and study the requirements of each and every drawing and each specification section of this contract so that he/she may become acquainted with the project as a whole in order to determine how the work of his/her subcontractor or vendor may affect the work required under this contract. Written Specifications are part of this contract
--

Construction Title Construction Floor Plans, Reflected Ceiling Plans, Interior Elevations
Approved: Division Chief
Approved: Service Director

Project Title PROVIDE HANDICAP ACCESS BUILDING 10 VANJHCS LYONS CAMPUS Lyons, NJ. 07939
Building Number 10
Checked MA
Drawn DW
Location Lyons, New Jersey

Date 4/5/2013
Project No. 561A4-10-102
Drawing No. AE101
Dwg 6 OF 24

	Office of Facilities DEPARTMENT OF VETERANS AFFAIRS
--	---