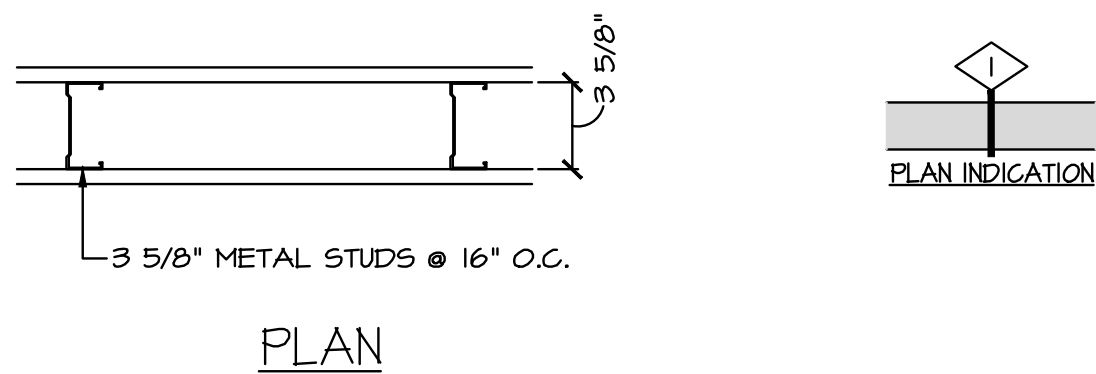
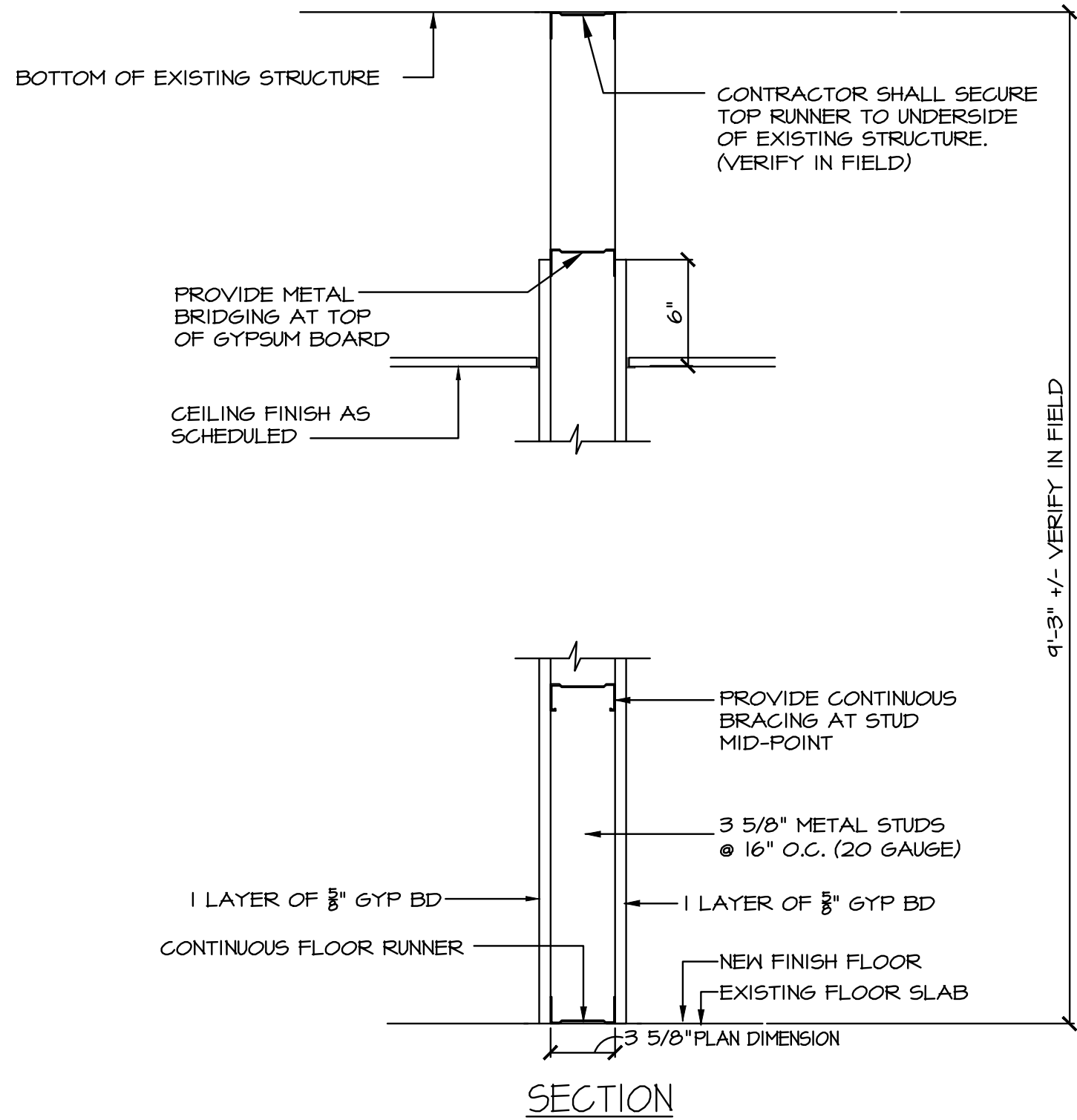
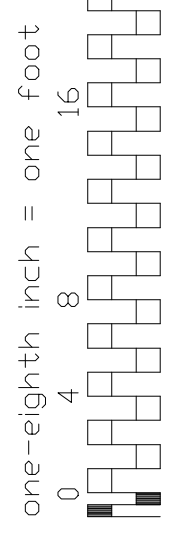
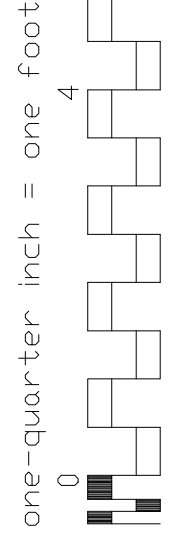
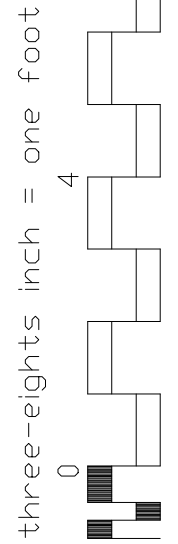
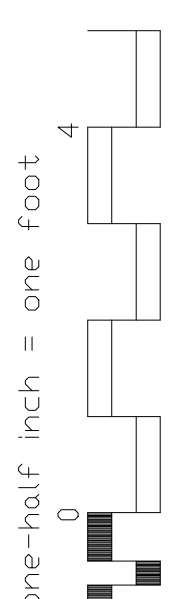
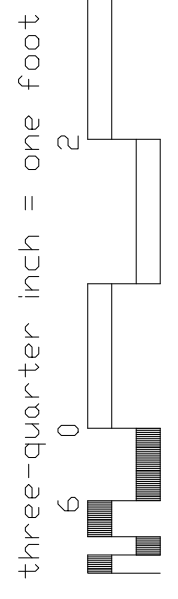
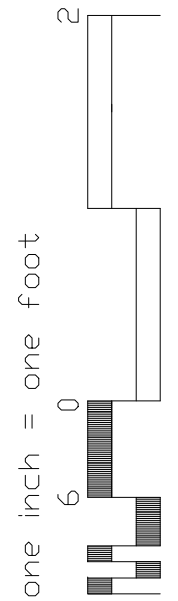
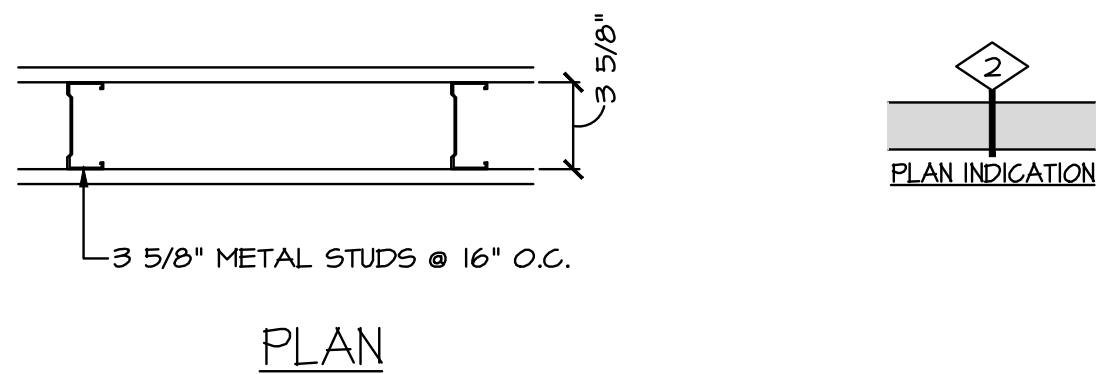
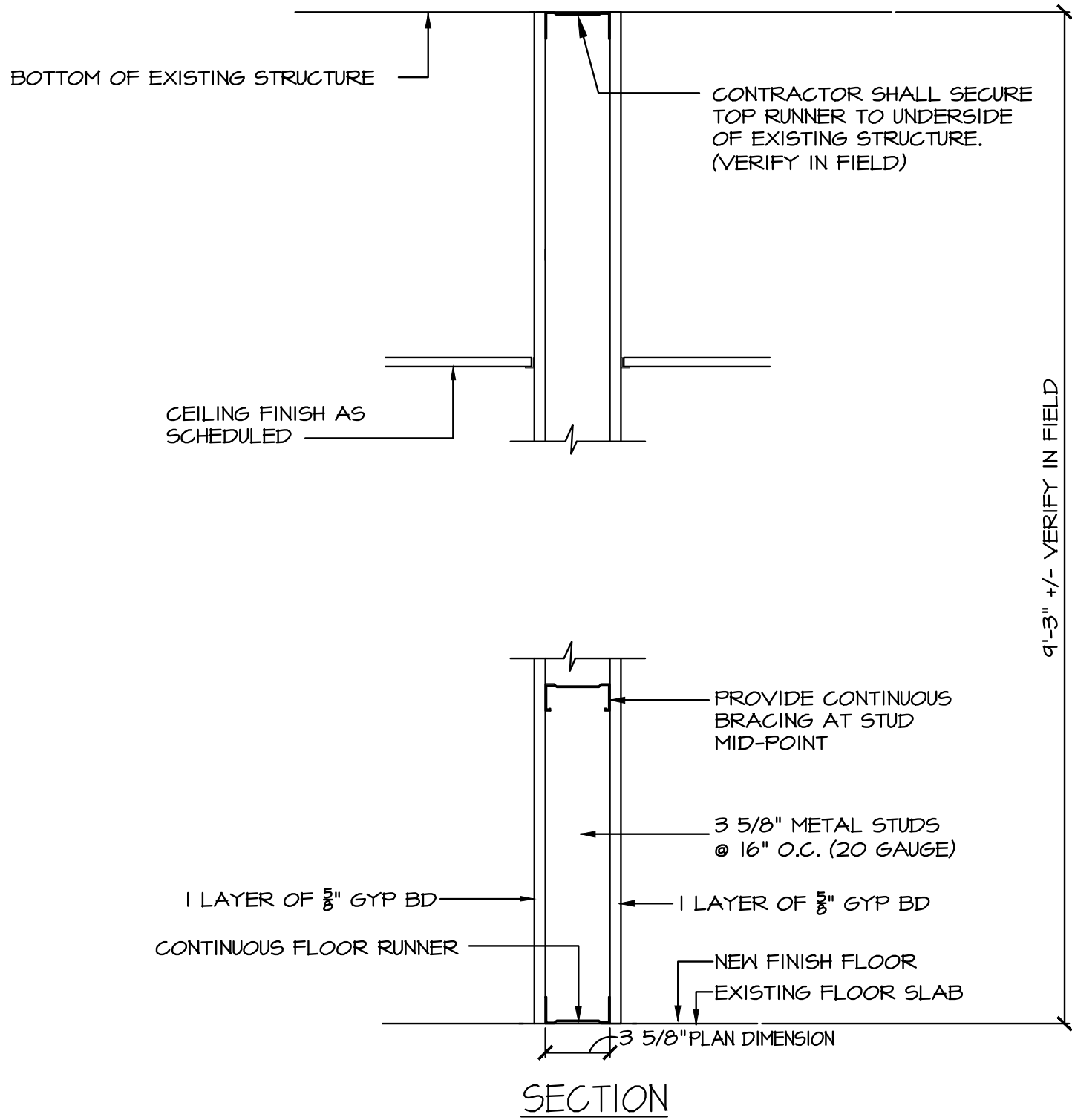


IF THIS SHEET IS NOT 30" x 42"  
FULL SIZE, USE GRAPHIC SCALES

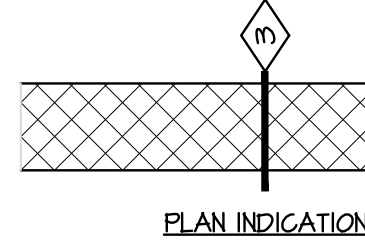
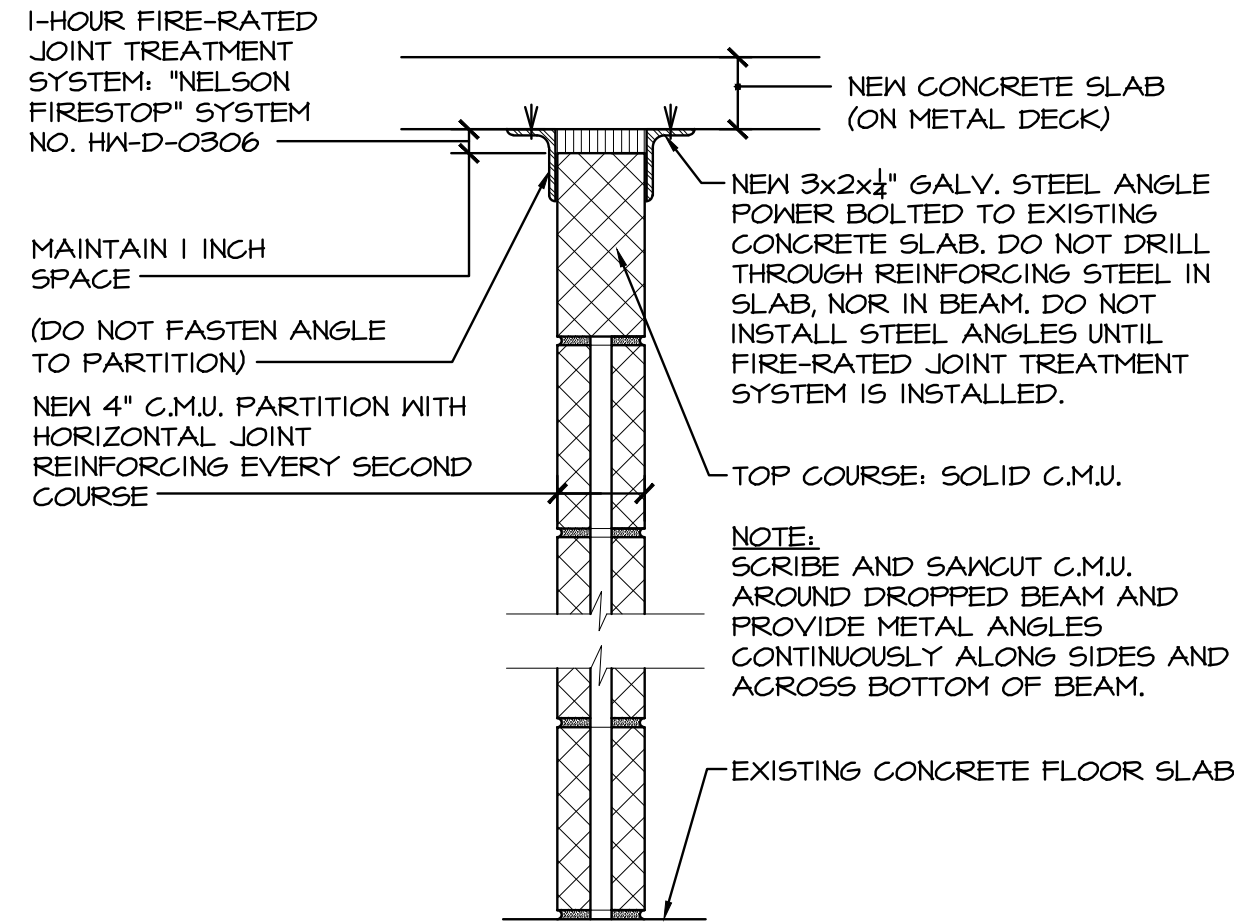


**1** PARTITION TYPE 1  
1 1/2" = 1'-0"

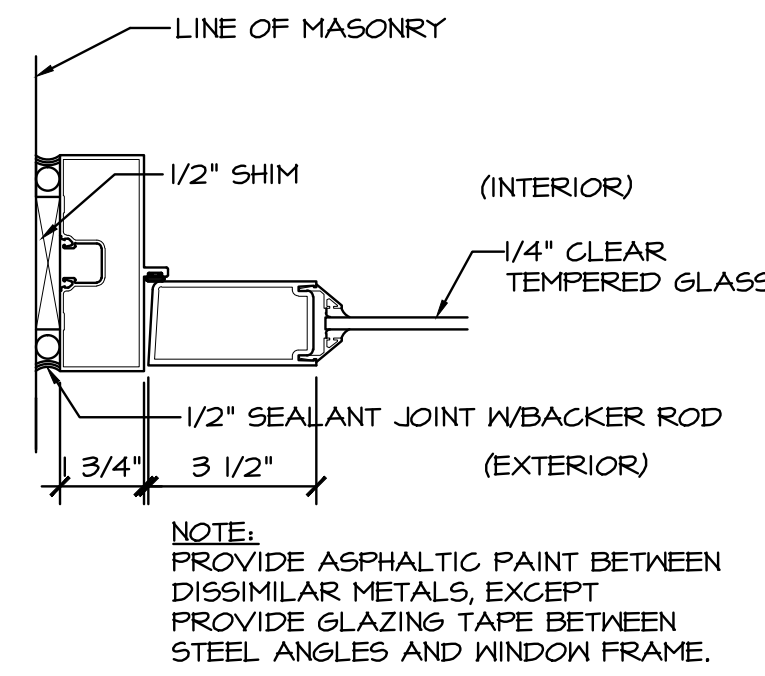


**2** PARTITION TYPE 2  
1 1/2" = 1'-0"

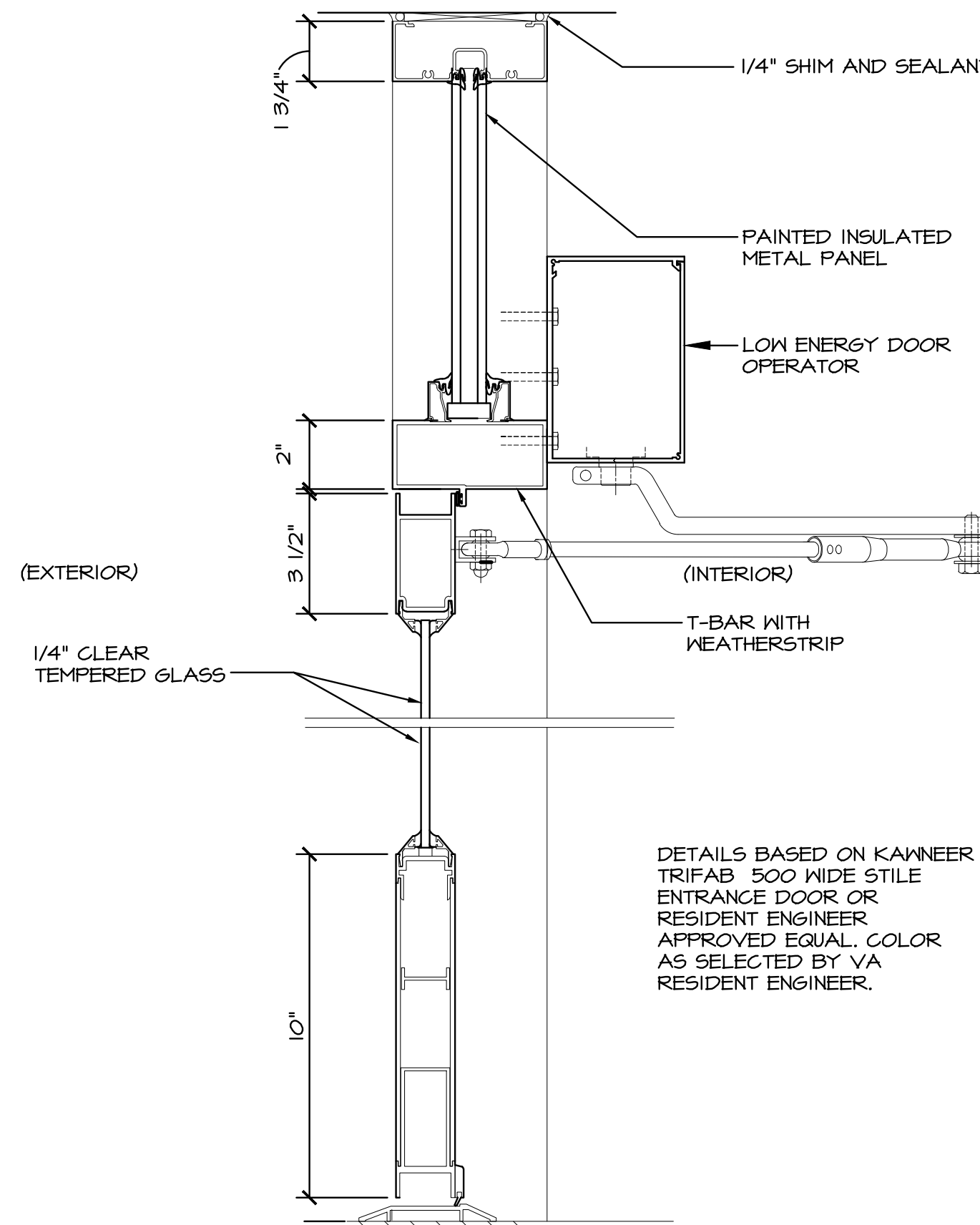
- NOTES:
- IF ANY OF THE NEW WALLS ARE TO ACT AS A CONSTRUCTION WALL DURING A PHASE, THE NEW METAL STUDS AND GYPSUM BOARD SHALL BE EXTENDED UP TO THE UNDERSIDE OF THE SLAB ABOVE. ALL OPENINGS IN WALL SHALL BE SEALED AND SEALANT AT TOP AND BOTTOM ON BOTH SIDES OF WALL SHALL BE INSTALLED. REFER TO PHASING PLANS.
  - ALL GYPSUM BOARD SHALL TYPE "X" UNLESS OTHERWISE NOTED.



**3** PARTITION TYPE 3  
1 1/2" = 1'-0"



**A** PLAN DETAIL AT DOOR JAMB (STRIKE)  
3" = 1'-0"



**B** VERTICAL SECTION AT ALUM. AND GLASS DOOR  
3" = 1'-0"

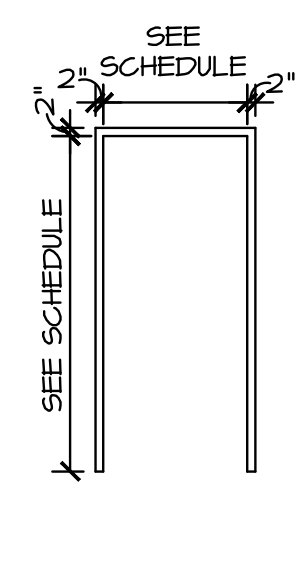
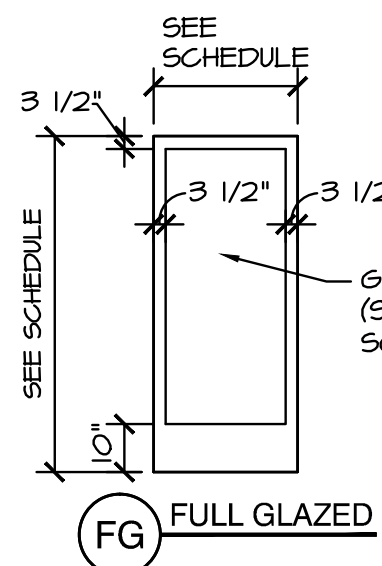
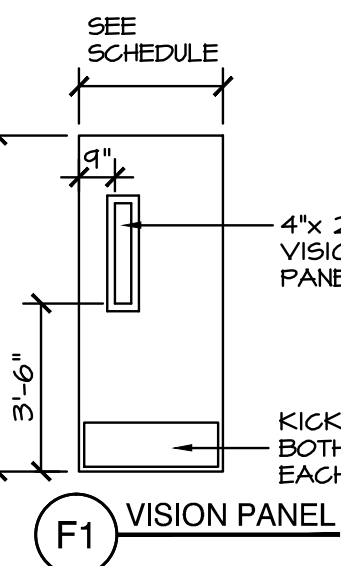
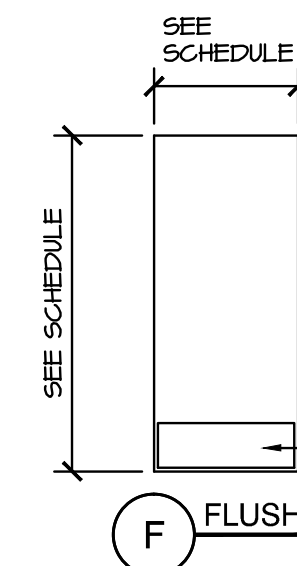
## DOOR SCHEDULE

DOOR NO.	SPACE		DOOR							FRAME							FIRE RATED LABEL	HARDWARE		REMARKS
	FROM	TO	SIZE			TYPE	MAT.	DOOR FINISH	GLASS		UNDER CUT	DETAILS			TYPE	MAT.		FRAME FINISH	SET NO.	
			W	H	T				SIZE	TYPE		HEAD	JAMB	SILL						
1	ELEV. MACH RM.	BASEMENT	3'-6"	6'-8"	1 3/4"	F	HM	P	—	—	—	A (SIM.)	A		I	H.M.	P	"B"	1	BSMT.
2	PIPE CLOSET	LOBBY 2	3'-0"	7'-0"	1 3/4"	F	WD	CWF	—	—	—	C (SIM.)	C		I	H.M.	P	-	2	LOBBY
3	LOBBY 1	EXTERIOR	3'-0"	7'-0"	1 3/4"	FG	M-GL	FAC.	2'-2"x 5'-1"	T	—					AL	FAC.	-	3	EXT.
4	CORRIDOR 218	OFFICE "A"	3'-0"	7'-0"	1 3/4"	FI	WD	CWF	4"x 2'-1"	T	—	B (SIM.)	B		I	H.M.	P	-	4	CORR.
5	CORRIDOR 218	OFFICE "B"	3'-0"	7'-0"	1 3/4"	FI	WD	CWF	4"x 2'-1"	T	—	B (SIM.)	B		I	H.M.	P	-	4	CORR.

LEGEND  
AL = ALUMINUM  
CWF = CLEAR WOOD FINISH  
EX. = EXISTING  
FAC = FACTORY FINISH  
GL = GLAZING  
H.M. = HOLLOW METAL  
M = METAL  
M-GL = ALUMINUM AND GLASS  
PT = PAINTED  
T = TEMPERED GLASS  
WG = 1/4" WIRE GLASS  
U526D = SATIN CHROME PLATED ON STEEL  
U532D = SATIN STAINLESS STEEL ON STAINLESS STEEL

## DOOR ELEVATIONS

(NOT TO SCALE)



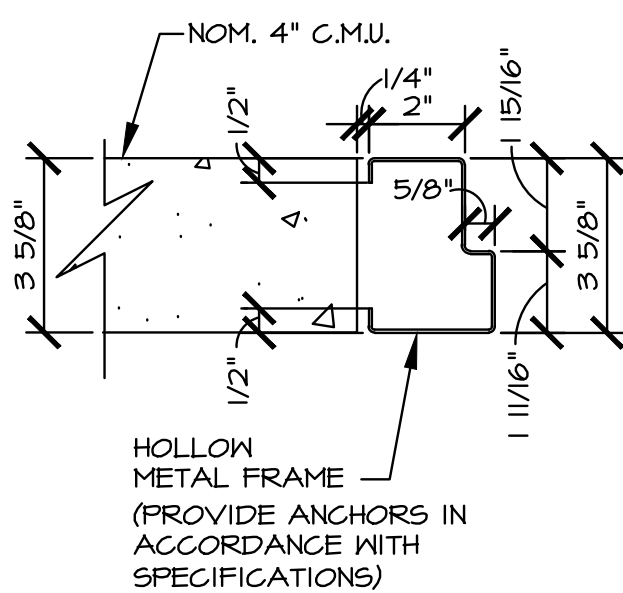
**1** FRAME TYPES  
SCALE: 1/4" = 1'-0"

## HARDWARE SETS

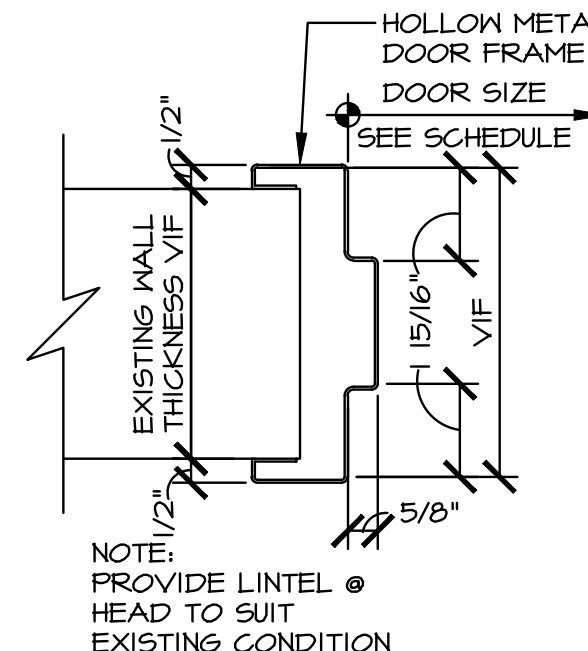
(ELEVATOR MACHINE ROOM)			
HW-1 EACH DOOR TO HAVE: 1-1/2 PAIR BUTT HINGES 1 LOCKSET, STOREROOM	STANLEY F86 (CYLINDRICAL)	#FBB174 STANDARD HEIGHT, 4.5"x4.5" STANLEY-BEST 43K-TD—S3 LEVER AND ROSE STYLE TO MATCH EXISTING LON #4041 W/ DELAYED ACTION ROCKWOOD #608	(U526D) (U526D) (ALUM) (U532D)
1 OVERHEAD CLOSER 3 SILENCERS	CO2011/ CO2021 LO3011		
(PIPE CLOSET)			
HW-2 EACH DOOR TO HAVE: 1-1/2 PAIR BUTT HINGES 1 LOCKSET, STOREROOM	STANLEY F86 (CYLINDRICAL)	#FBB174 STANDARD HEIGHT, 4.5"x4.5" STANLEY-BEST 43K-TD—S3 LEVER AND ROSE STYLE TO MATCH EXISTING ROCKWOOD #608	(U526D) (U526D) (U532D)
3 SILENCERS	LO3011		
(TO EXTERIOR)			
HW-3 EACH DOOR TO HAVE: (KANNEER TRIFAB 500 WIDE STILE DOOR HARDWARE 1 CONTINUOUS HINGE 1 PUSH / PULL BAR 1 EXIT DEVICE 1 CYLINDER 1 WEATHERSTRIPPING SET 1 LOW PROFILE THRESHOLD 1 AUTOMATIC DOOR OPERATOR	KANNEER F86 (CYLINDRICAL)	#FBB174 STANDARD HEIGHT, 4.5"x4.5" STANLEY-BEST 43K-TD—S3 LEVER AND ROSE STYLE TO MATCH EXISTING ROCKWOOD #608 THRESHOLD SET IN MASTIC LON 4640CS SERIES ELECTRICALLY POWERED LOW ENERGY DOOR OPERATOR- FLUSH CEILING MOUNT, PROVIDE AUXILIARY STOP, METAL COVER, CONCEALED ON / OFF SWITCH, SEPARATE KEY SWITCH, NO DESTRUCTURE FEATURE. LON HARDWIRED AUTOMATIC OPERATOR ACTUATORS - 8310-856 SERIES 4 1/2" ROUND FLUSH MOUNTED, PROVIDE WATERPROOF BOX AND WEATHER RING.	(U526D) (U526D) (U532D)
2 PUSH BUTTON SWITCHES			
(OFFICES)			
HW-4 EACH DOOR TO HAVE: 1-1/2 PAIR BUTT HINGES 1 LOCKSET, ENTRANCE	STANLEY F104 (CYLINDRICAL)	#FBB174 STANDARD HEIGHT, 4.5"x4.5" STANLEY-BEST 43K-TAB—S3 LEVER AND ROSE STYLE TO MATCH EXISTING ROCKWOOD #608 CONVEX STYLE, TRIMCO #1270WX	(U526D) (U526D) (U532D) (U526D)
3 SILENCERS 1 WALL STOP	LO3011 LS2101/ LS2101		

## DOOR & HARDWARE NOTES

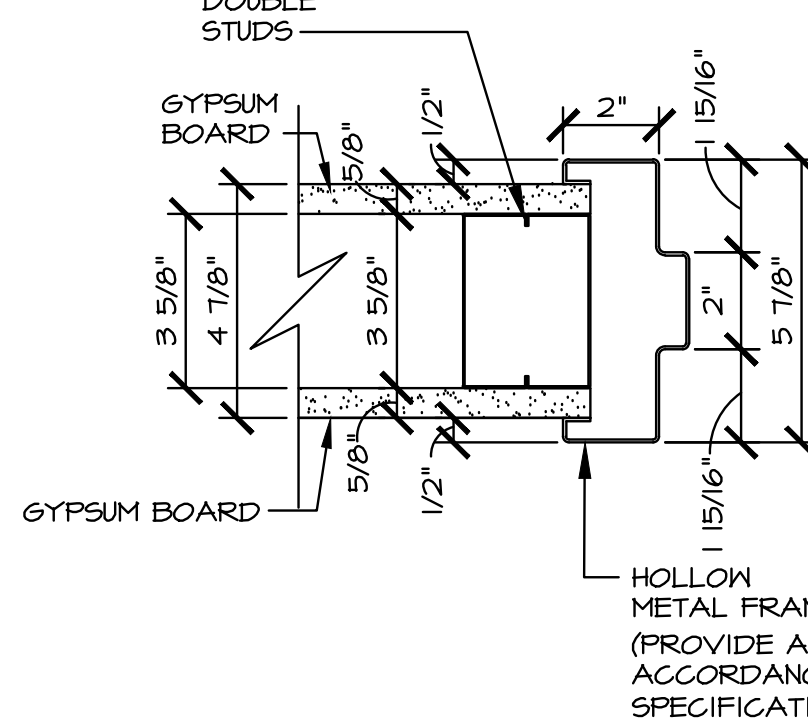
- HOLLOW METAL DOOR AND HOLLOW METAL FRAMES SHALL BE GIVEN A COAT OF FACTORY PRIMER AND TWO FIELD COATS OF "BENJAMIN MOORE" LATEX REGAL PAINT, COLOR AS SELECTED BY V.A. CONTRACTING OFFICER.
- PERFORM TOUCH-UP PAINTING OF EXISTING WALL/CEILING SURFACES, INCLUDING NEW GYPSUM BOARD EXPOSED IN THE FINISHED WORK. PROVIDE TWO FINISH COATS OF PAINT, GLOSS LEVEL TO MATCH EXISTING, MAXIMUM V.O.C. TO BE 50. PAINT AS MANUFACTURED BY "BENJAMIN MOORE." COLOR AS SELECTED BY V.A. CONTRACTING OFFICER.
- NEW BRICK AND MORTAR SHALL RECEIVE TWO COATS OF WATER REPELLENT, "ENVIROSEAL CLEAR DOUBLE T" FOR BRICK, HYDROZO COATINGS COMPANY, LINCOLN, NE.
- PROVIDE PRODUCTS BY THE FOLLOWING MANUFACTURERS, OR V.A. CONTRACTING OFFICER-APPROVED EQUAL.  
A. BUTT HINGES: "STANLEY."  
B. LOCKSETS: "STANLEY (BEST ACCESS SYSTEMS)" 43K SERIES, STYLE "14" LEVER, STYLE "D" ROSE.  
C. CYLINDERS: "BEST," 1 PIN.  
D. CLOSERS: "L.C.N."  
E. ALUMINUM AND GLASS DOOR HARDWARE: BY DOOR MANUFACTURER.  
F. REFER TO SPECIFICATIONS/ SECTION 08113 FOR AUTOMATIC DOOR OPENER.



**A** JAMB TYPE- A  
HEAD: PROVIDE GALVANIZED STEEL LINTEL 4"x 3 1/2"x 5/16" W/ 6" BEARING EACH END.



**B** JAMB TYPE- B  
HEAD TYPE- B SIM.



**C** JAMB TYPE- C  
HEAD TYPE- C SIM.

## NOTE AND READ CAREFULLY:

The Contractor shall consult and study the requirements of each and every drawing and each specification section of this contract so that he/she may become acquainted with the project as a whole in order to determine how the work of his/hers subcontractor or vendor may affect the work required under this contract.

Written Specifications are part of this contract

## Drawing Title PARTITION TYPES AND DOOR SCHEDULE

Approved: Division Chief

Approved: Service Director

Project Title  
**PROVIDE HANDICAP ACCESS  
BUILDING 10  
VANJHCS LYONS CAMPUS  
Lyons, NJ. 07939**

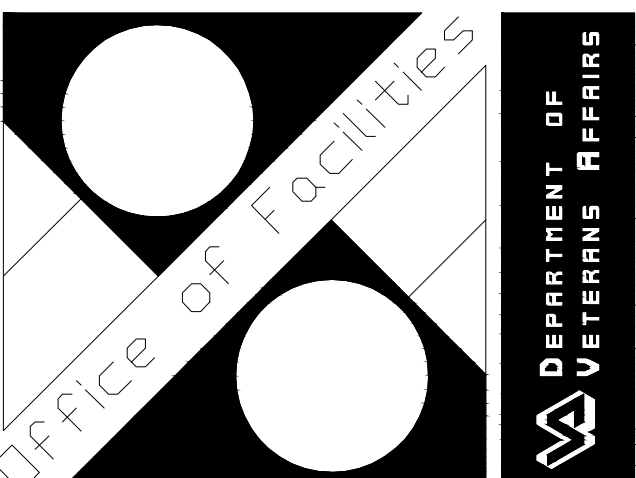
Building Number  
**10**  
Checked  
**MA**  
Drawn  
**DW**  
Location  
**Lyons, New Jersey**

Date  
**4/5/2013**

Project No.  
**561A4-10-102**

Drawing No.  
**AE601**

Drawn  
**14** of **24**



U.S. GOVERNMENT PRINTING OFFICE:1983-400-255