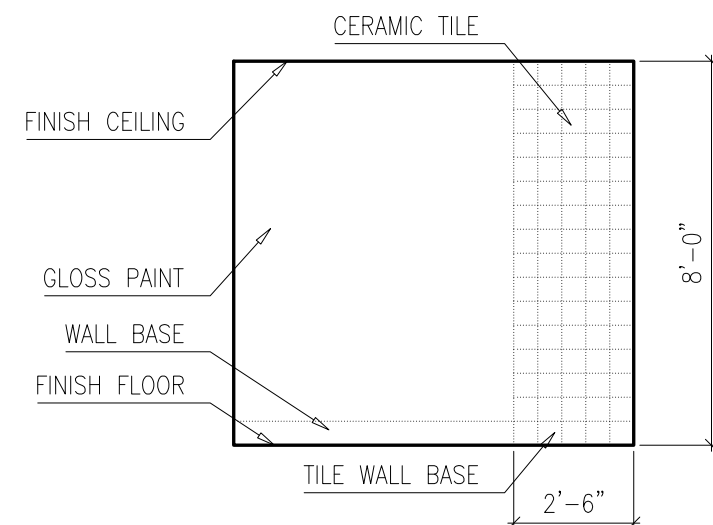
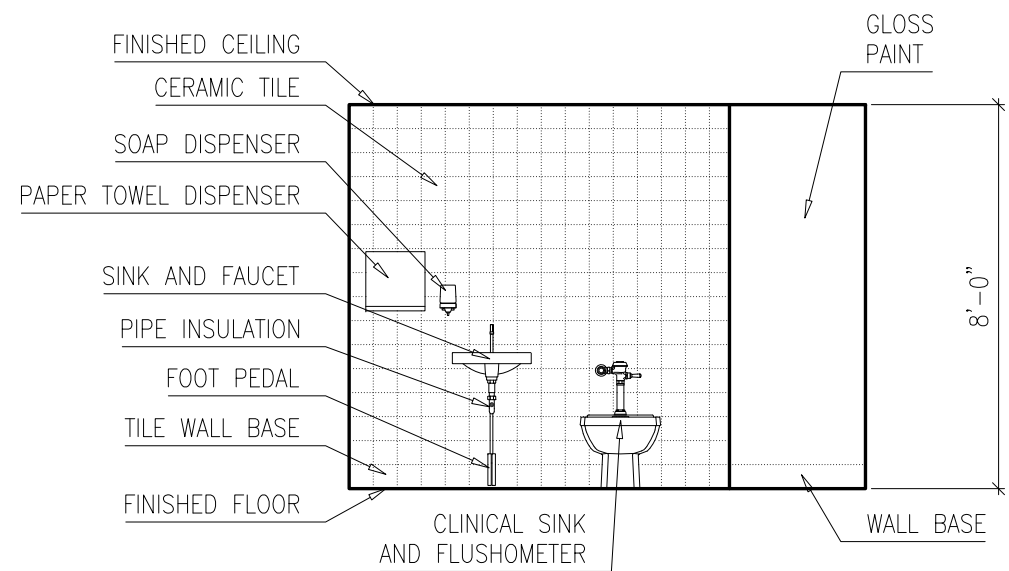


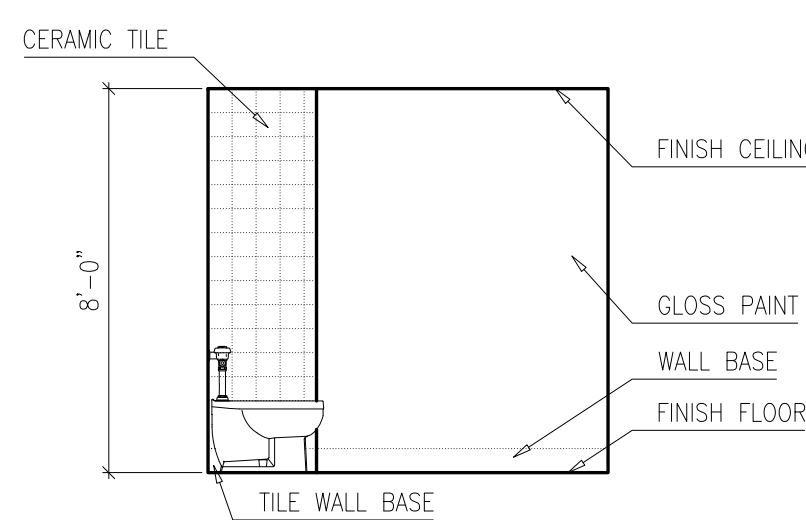
11 SOILED UTILITY ROOM ELEVATION
1/4" = 1'-0"



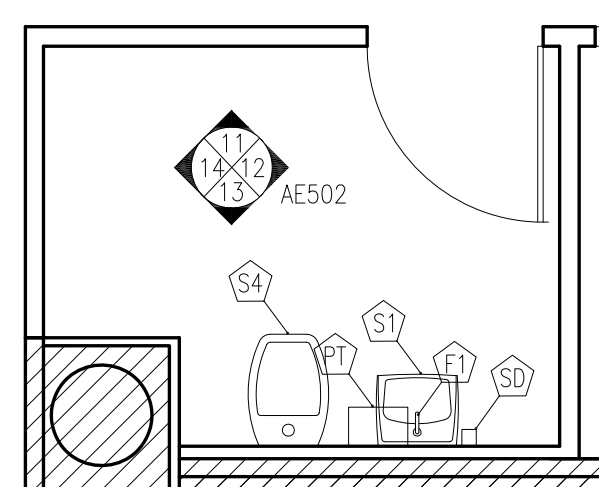
12 SOILED UTILITY ROOM ELEVATION
1/4" = 1'-0"





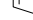
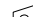


13 SOILED UTILITY ROOM ELEVATION
1/4" = 1'-0"



14 SOILED UTILITY ROOM ELEVATION
1/4" = 1'-0"



SOILED UTILITY ROOM TAG LEGEND

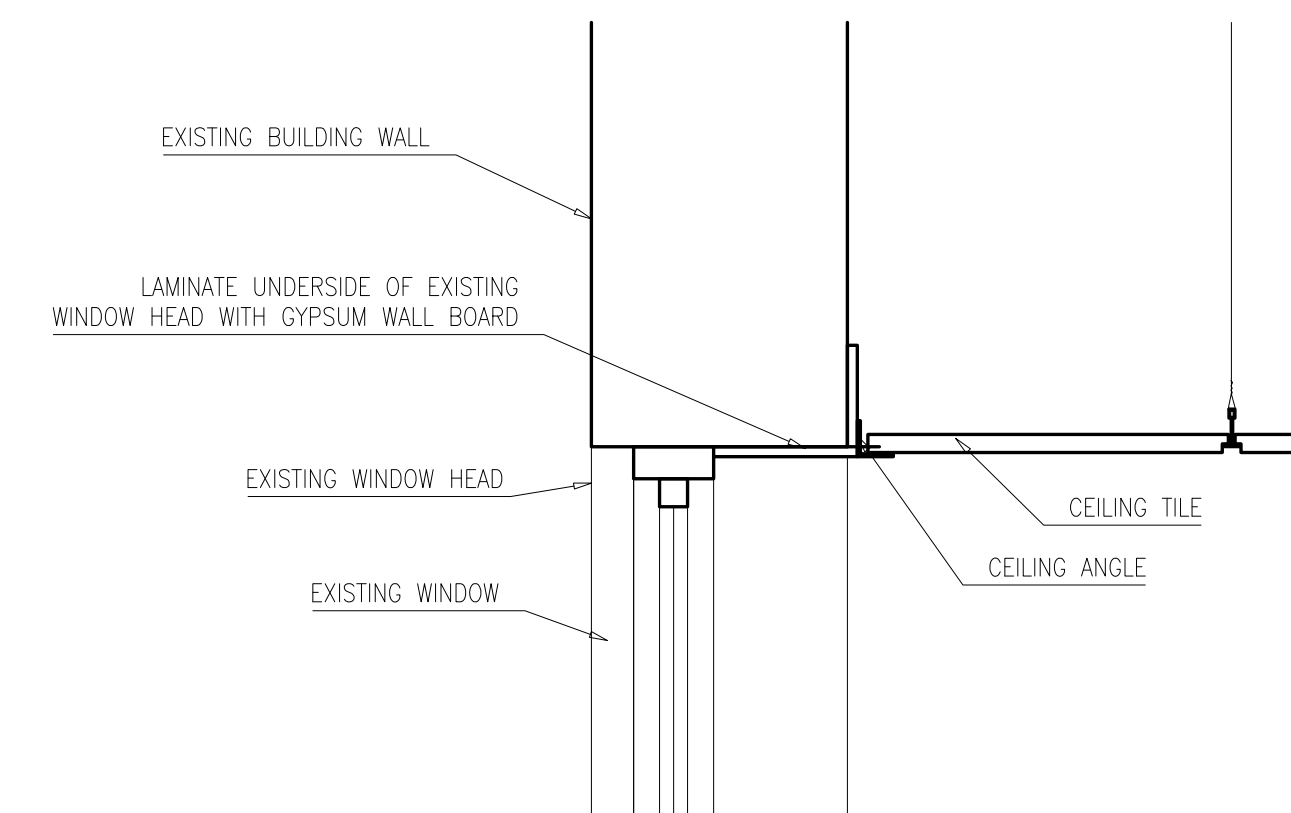
	FAUCET AT HAND WASHING SINK - SEE ENGINEERING DRAWING
	PAPER TOWEL DISPENSER
	HAND WASHING SINK WITH FOOT PEDAL - SEE ENGINEERING DRAWING
	CLINICAL SINK WITH FLUSHOMETER - SEE ENGINEERING DRAWING
	SOAP DISPENSER
	CURTAIN TRACK, 8-AE501

16 SOILED UTILITY ROOM PLAN (TYPICAL)
1/4" = 1'-0"

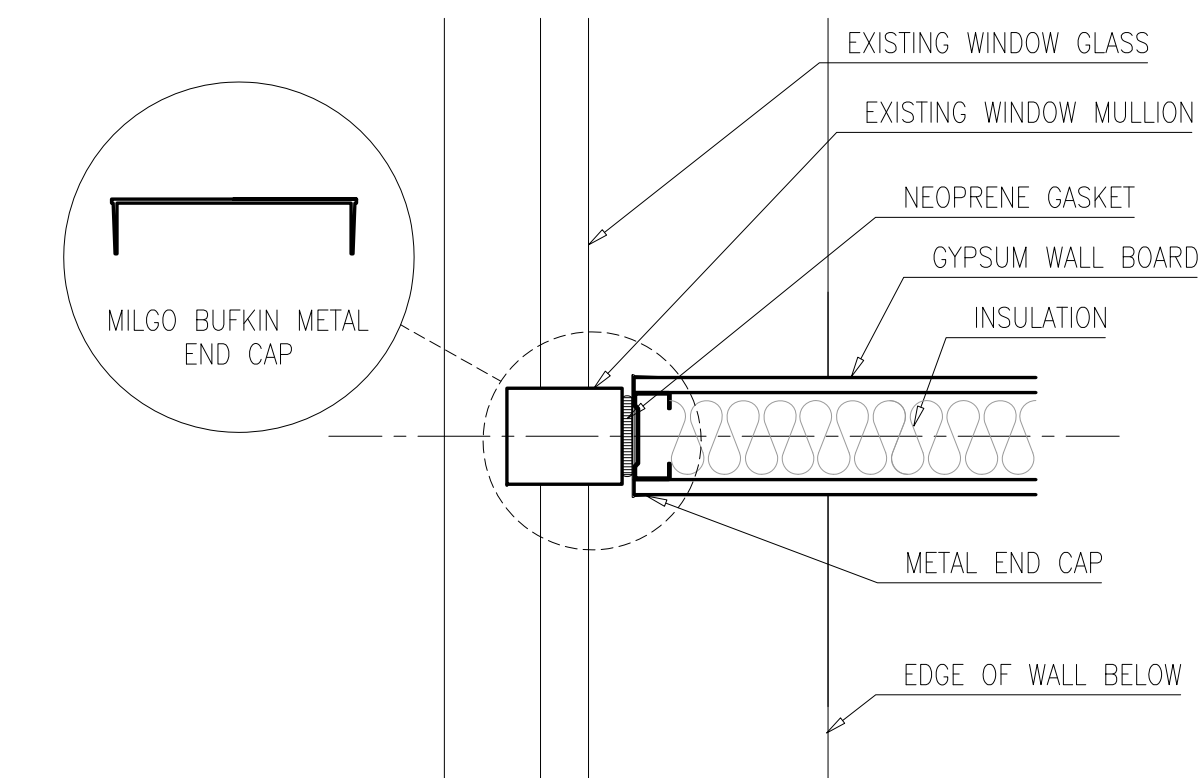
RFI #1 (EMAIL DATED 08/26/2013)	⚠️	08/29/2013		
BID DOCUMENT SUBMISSION		03/20/2013		
100% CONSTRUCTION DOCUMENT SUBMISSION		10/03/2012		
65% DESIGN DEVELOPMENT SUBMISSION		08/07/2012		
35% DESIGN DEVELOPMENT SUBMISSION		06/12/2012		
Revisions:		Date		

CONSULTANTS:

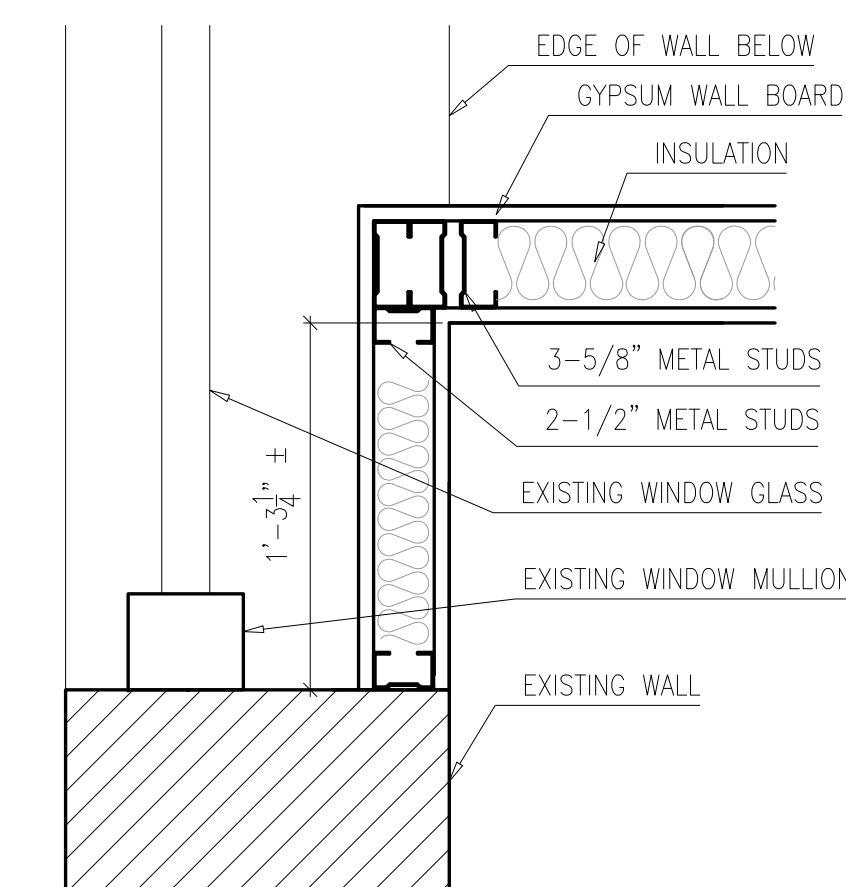
ME ENGINEERS 29 WEST 38TH STREET NEW YORK, NEW YORK 212 447 6770	MECHANICAL ELECTRICAL PLUMBING FIRE PROTECTION	EM&CA ENVIRONMENTAL MONITORING & CONSULTING ASSOCIATES P.O BOX 872 SOMERVILLE, NJ, 08876 (732)249-3005
---	---	--



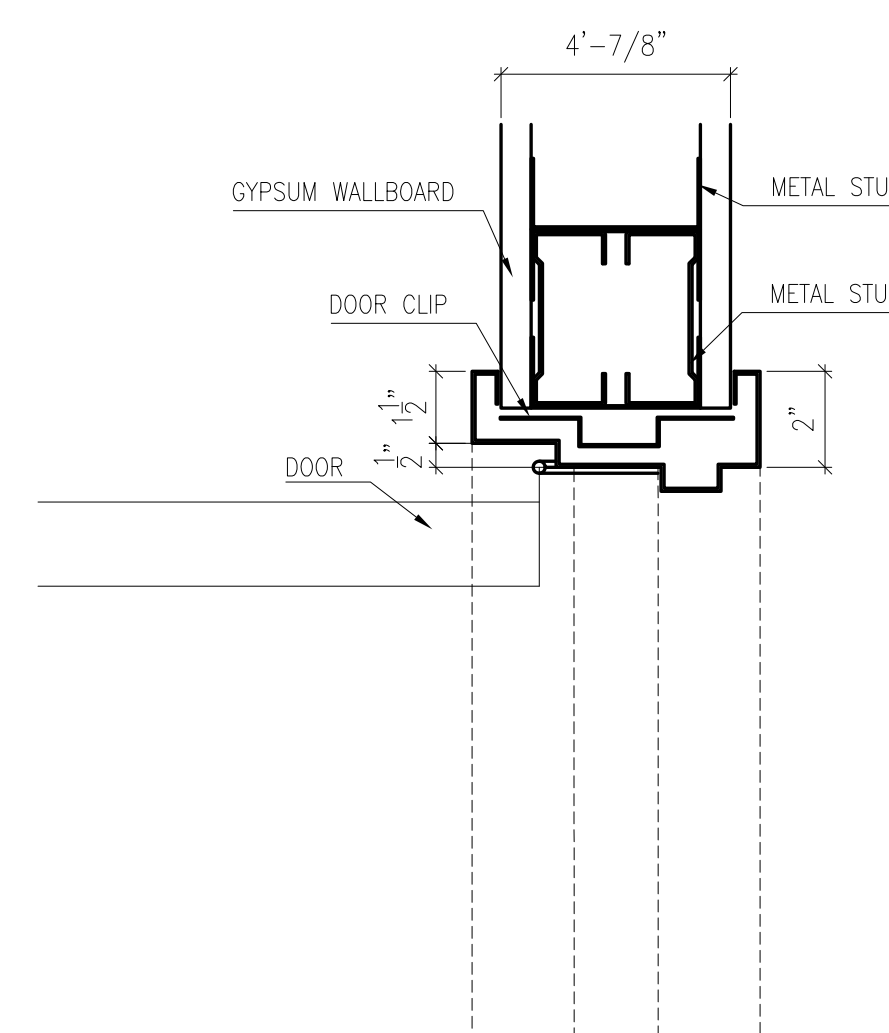
4 SOFFIT DETAIL AT WINDOW GBS(W)
1"= 1'-0"



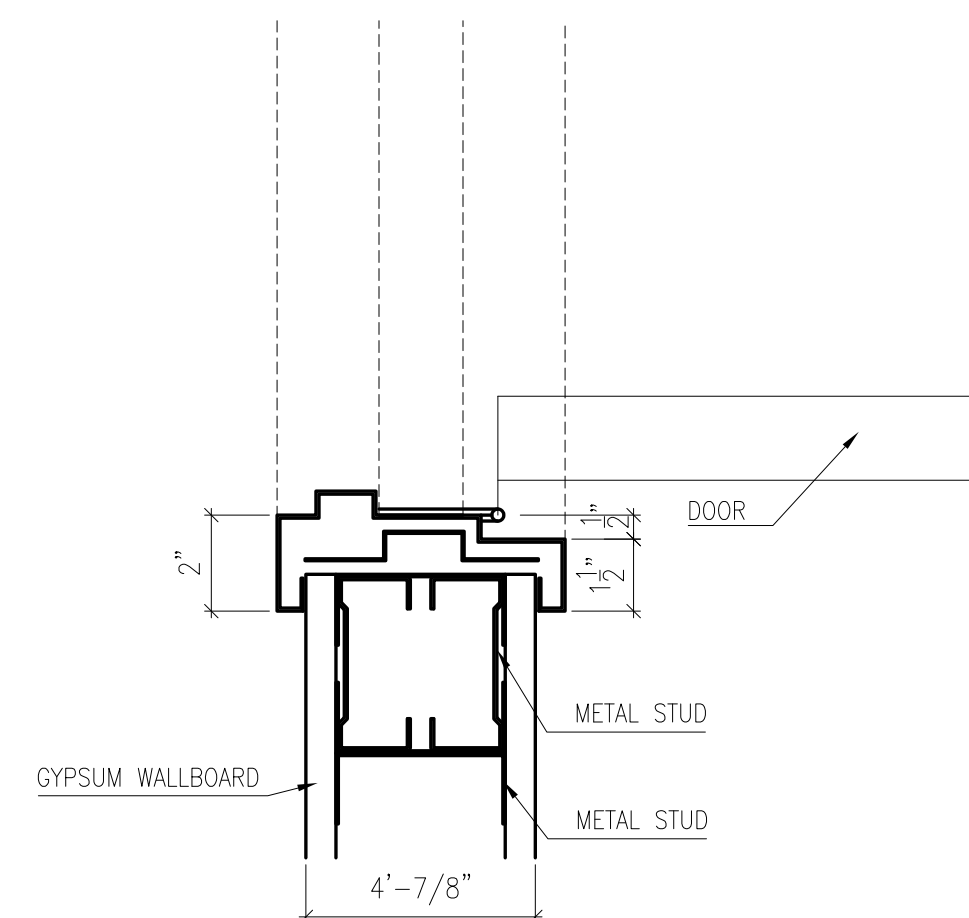
5 MULLION PLAN DETAIL
1 1/2" = 1'-0"



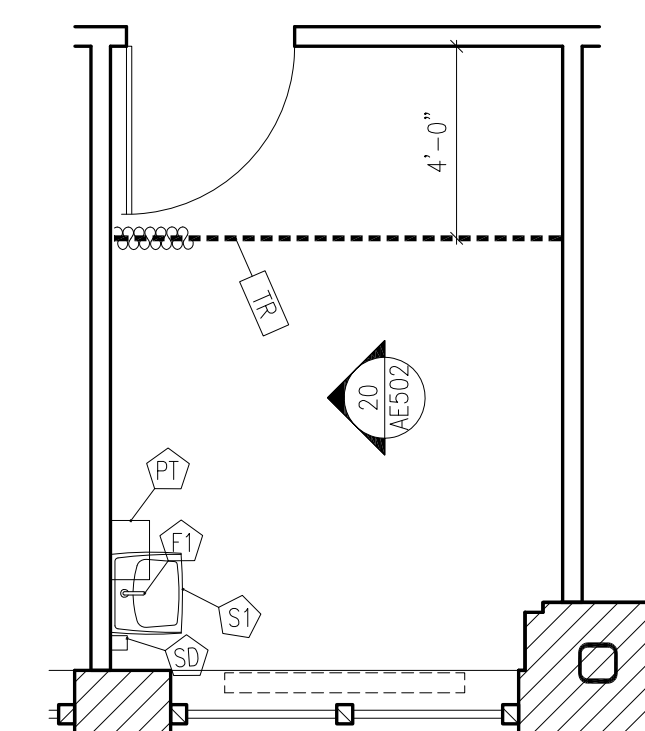
10 PLAN DETAIL AT WINDOW
1 1/2" = 1'-0"








8 FLOOR PATTERN FOR FT1
1/2"= 1'-0"



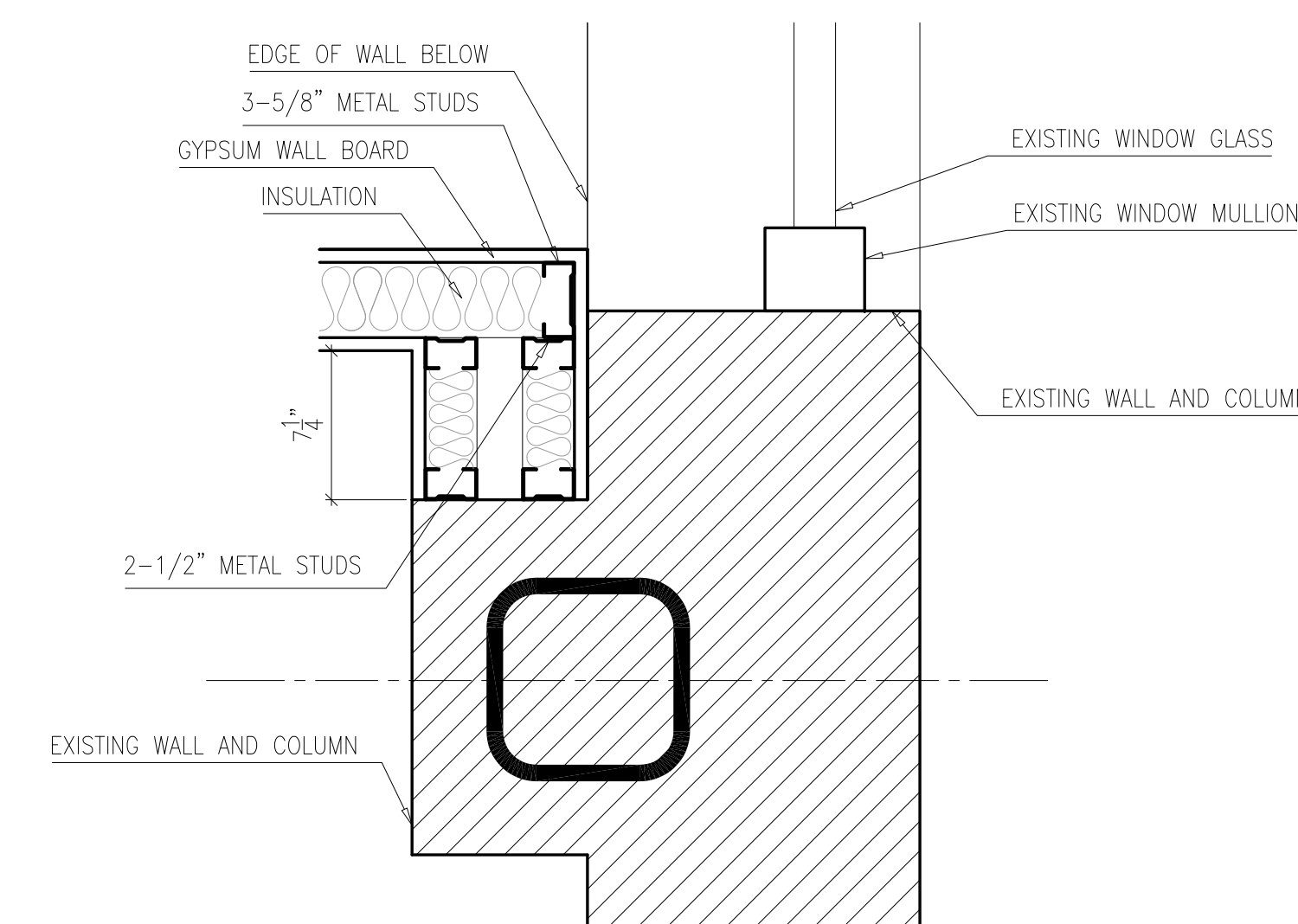
18 DOOR JAMB DETAIL (DOOR # 7000)
3" = 1'-0"



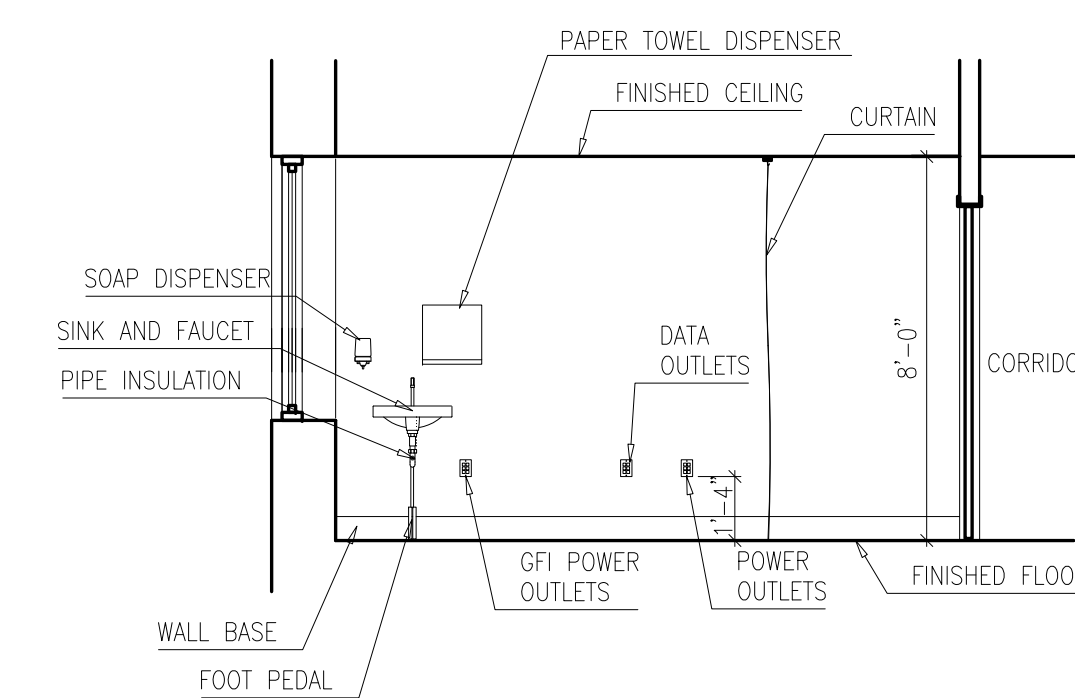
EXAM ROOM TAG LEGEND

	FAUCET AT HAND WASHING SINK – SEE ENGINEERING DRAWING
	PAPER TOWEL DISPENSER
	HAND WASHING SINK WITH FOOT PEDAL – SEE ENGINEERING DRAWING
	SOAP DISPENSER
	CURTAIN TRACK, 8-AE501

19 EXAM ROOM PLAN (TYPICAL)
1/4" = 1'-0"



15 PLAN DETAIL AT WINDOW
1 1/2" = 1'-0"



20 EXAM ROOM ELEVATION (TYPICAL)
1/4" = 1'-0"