

MEP EQUIPMENT CUT SHEETS



US DEPARTMENT OF VETERANS AFFAIRS MANHATTAN MEDICAL CENTER WOMENS HEALTH CLINIC 7 - WEST

PREPARED BY:

M-E ENGINEERS
29 W. 38TH STREET, 5TH FL
NEW YORK, NY 10018



DATE: MARCH 2013

BID DOCUMENT

Table of Contents

MECHANICAL

<i>FAN COIL UNITS (FC-A), (FC-B) AND (FC-C)</i>	<i>1</i>
<i>CEILING DIFFUSERS (A) AND (B)</i>	<i>4</i>
<i>CEILING REGISTER (C)</i>	<i>8</i>
<i>AIR CONTROL VALVES</i>	<i>9</i>

PLUMBING

<i>SINK (S1)</i>	<i>11</i>
<i>LAVATORY (S2)</i>	<i>17</i>
<i>MOP SINK (S3)</i>	<i>23</i>
<i>CLINIC SERVICE SINK (S4)</i>	<i>27</i>
<i>WATER CLOSET (T1)</i>	<i>31</i>

SPRINKLER

<i>SPRINKLER HEADS</i>	<i>36</i>
------------------------	-----------

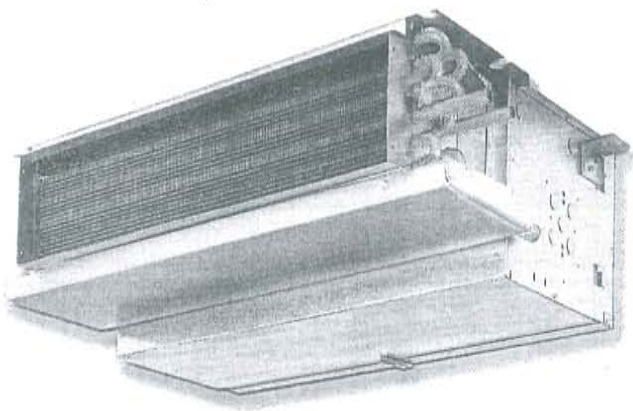
ELECTRICAL

<i>SPEAKERS</i>	<i>43</i>
<i>WALL SWITCH SENSOR</i>	<i>50</i>
<i>EMERGENCY LIGHTING CONTROL</i>	<i>52</i>
<i>RECEPTACLES</i>	<i>54</i>
<i>NURSE CALL</i>	<i>55</i>
<i>LIGHT FIXTURES</i>	<i>58</i>
<i>EXIT SIGN</i>	<i>63</i>

FAN COIL UNITS (FC-A), (FC-B)
AND (FC-C)

HORIZONTAL SERIES

FAN COIL TECHNICAL CATALOG



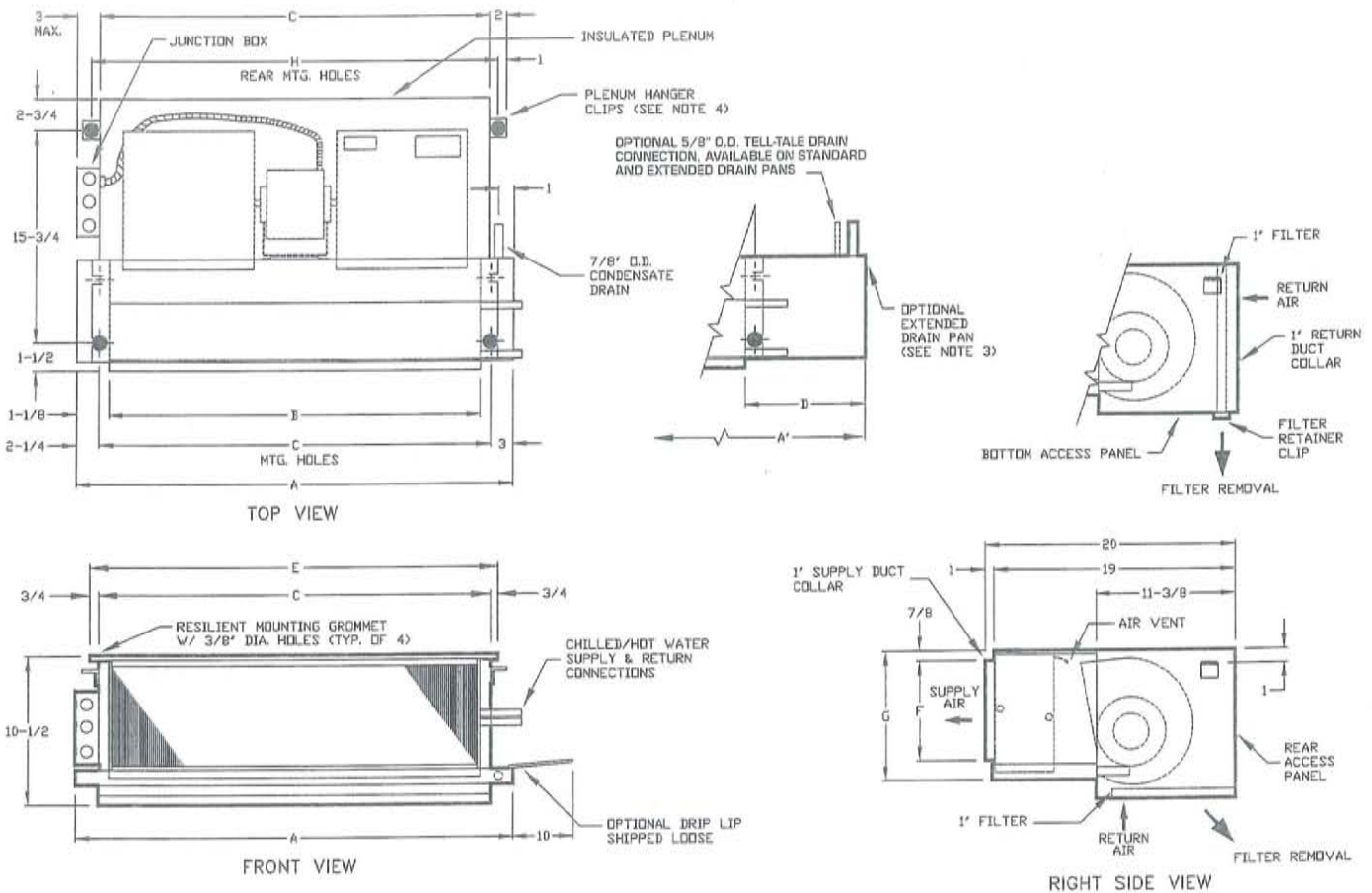
INTERNATIONAL
ENVIRONMENTAL

Solutions for indoor environments

Page 1

PHYSICAL DATA

MODEL CPY - CEILING HIDEAWAY WITH PLENUM



Unit Model	Dimension									Unit Weight*
	A	A'	B	C	D	E	F	G	H	
CPY 02	21-1/4"	31-1/4"	16"	18-1/4"	13"	19-3/4"	6-1/4"	8-3/4"	20-1/4"	55
CPY 03	25-1/4"	36-1/4"	20"	22-1/4"	14"	23-3/4"	6-1/4"	8-3/4"	24-1/4"	60
CPY 04	31-1/4"	43-1/4"	26"	28-1/4"	15"	29-3/4"	6-1/4"	8-3/4"	30-1/4"	70
CPY 06	36-1/4"	43-1/4"	31"	33-1/4"	10"	34-3/4"	7-1/2"	10"	35-1/4"	82
CPY 08	43-1/4"	57-1/4"	38"	40-1/4"	17"	41-3/4"	7-1/2"	10"	42-1/4"	95
CPY 10	57-1/4"	65-1/4"	52"	54-1/4"	11"	55-3/4"	7-1/2"	10"	56-1/4"	135
CPY 12	65-1/4"	75-1/4"	60"	62-1/4"	13"	63-3/4"	7-1/2"	10"	64-1/4"	154

Notes

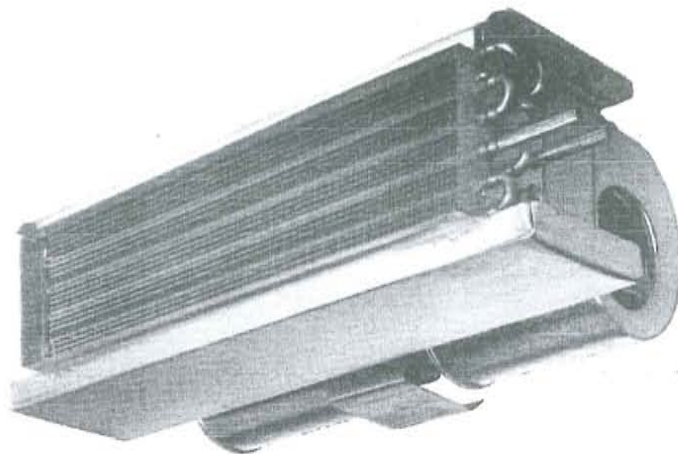
- * Unit weights (shown in pounds) are based on dry coils, minimum rows and exclude packaging, valves or other components.
- (1) Any modifications to product specifications by any person are subject to acceptance of the IEC Home Office. Product specifications are subject to change without notice.
 - (2) All dimensions are +/- 1/4".
 - (3) Optional drip lip is not required with optional extended drain pan.

- (4) Plenum hanger clip location may vary depending on unit accessories.
- (5) Junction box size and location may vary.
- (6) A' dimension is for extended drain pan option.
- (7) Dimensions may vary for optional electric heat models. Consult factory for submittal drawings.
- (8) RH shown, LH opposite.

HORIZONTAL SERIES PORTFOLIO

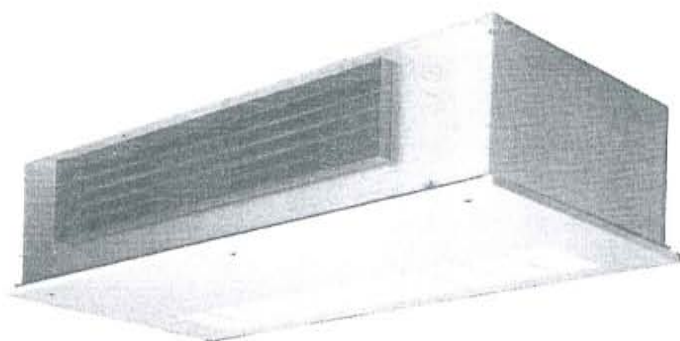
CEILING HIDEAWAY (CHY) 200 CFM TO 1200 CFM

The Ceiling Hideaway (CHY) fan coil unit is designed specifically to meet the many varied requirements for a ceiling hideaway installation. The low-silhouette styling of the CHY makes this unit ideally suited for drop-ceiling and over-closet applications. *Standard CHY units are provided with a galvanized finish.*



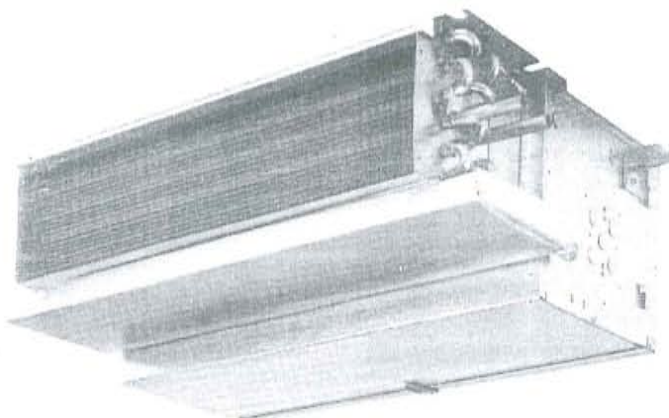
CEILING TELESCOPING HIDEAWAY (CBY) 200 CFM TO 1200 CFM

The Ceiling Telescoping Hideaway (CBY) fan coil unit is mounted fully-recessed for ceiling-recessed applications. The CBY's telescoping frame with hinged panel adapts to any ceiling type and ensures exact alignment of the panel with the ceiling. The hinged-bottom panel provides easy access to all internal components. *Standard CBY units are provided with a galvanized finish on the cabinet and a powder-coat paint finish on the bottom-access panel.*



CEILING HIDEAWAY WITH PLENUM (CPY) 200 CFM TO 1200 CFM

The Ceiling Hideaway with Plenum (CPY) fan coil unit provides the same basic features of the CHY plus a return air plenum for above-ceiling mounting in closets, hallways or bathroom areas. The CPY design enables the unit to be adapted to installations requiring return air ducts or to be used as a return air plenum with a unit-mounted filter and filter-rack assembly. CPY units are shipped from the factory ready for installation with the plenum section in place. No field fabrication is required. CPY units are designed with interchangeable panels so that the unit may be modified on site to accommodate a rear or bottom return. *Standard CPY units are provided with a galvanized finish.*



CEILING DIFFUSERS (A) AND (B)



Square Ceiling Diffusers

Diffusers

TMS, TMS-AA

HIGH PERFORMANCE



Available Models:

- TMS**
- TMS-AA
- Steel
- Aluminum

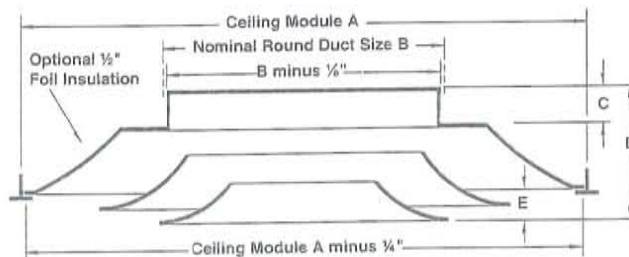
Products Include:

- Standard Finish - #26 White.
- Titus Models TMS and TMS-AA square ceiling diffusers deliver supply air in a true 360° pattern. Designed to protect ceilings from streaking and smudging.
- Excellent performance in variable air volume systems. The uniform, nearly horizontal jet from the outer cone maintains effective room air distribution even when the air volume varies over a considerable range.

- All sizes have three cones, giving a uniform appearance where different neck sizes are used in the same area.
- Screwdriver adjustment of the optional damper is achieved without removing the inner cone. (See Step 2 in Adjusting Optional Damper, Removing Center Core diagram on the following page.)
- Quick removal of the inner cone with a hex key. (See Step 3 in Adjusting Optional Damper, Removing Center Core diagram on the following page.)
- All cones are die-stamped, one piece construction. Smooth, clean surfaces with no corner joints.
- Optional factory-installed R-6 foil-backed insulation available for 24 x 24-inch full face models, neck sizes 6-15, borders 1, 2, 3 and 4.
- Optional SB sectorizing baffle is available. Consult your Titus representative for details.
- Material: all sizes are available in steel (Model TMS). Only the 24 x 24-inch ceiling module is available in aluminum with steel bar (Model TMS-AA).

Ceiling Module A	Nominal Round Duct Size B	C	D	E
12x12	4, 5 (note 2)	3 1/8	5 3/8	3/8
12x12	6, 7 (note 3)	1 1/8	3 3/8	3/8
12x12	8	1 1/4	3 1/2	5/8
24x24	6, 8	1 1/4	5	1/4
24x24	10, 12, 14, 15	1 3/8	5 1/8	1/4

Frame Type 3
Full Face (Lay-In)

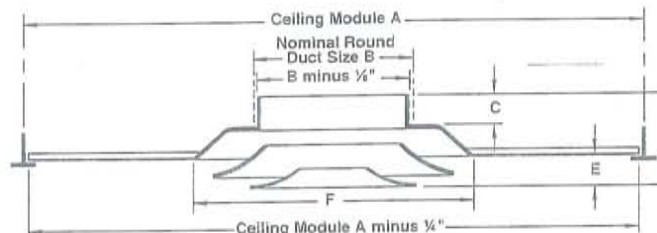


(note 1)

Notes:

1. Aluminum construction is available in full face 24" x 24" ceiling module only. Steel construction is available in all sizes.
2. Adapter is provided for sizes 4 and 5.
3. The smallest neck size available in aluminum is 6 inches.

Frame Type 3
Panel Mounted
(Lay-In)



(note 1)

Ceiling Module A	Nominal Round Duct Size B	Nominal Face Size F	C	D	E
24x24	4, 5 (note 2)	12x12	3 1/8	5 3/8	3/8
24x24	6, 7 (note 3)	12x12	1 1/8	3 3/8	3/8
24x24	8	12x12	1 1/4	3 1/2	5/8

All dimensions are in inches.

TMS, TMS-AA

www.titus-hvac.com | www.titus-energy.com

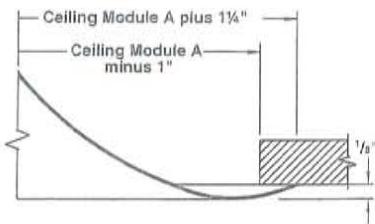
F

TMS, TMS-AA

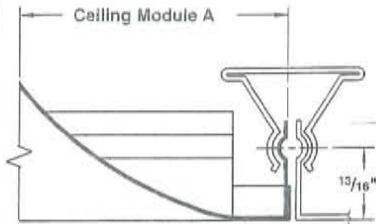
DIMENSIONS

OTHER AVAILABLE FRAME TYPES

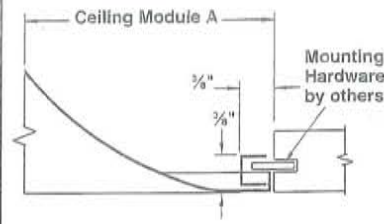
Frame Type 1
(Surface Mount) Full Face



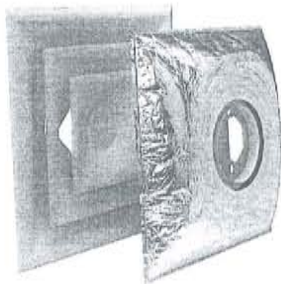
Frame Type 2
(Snap-in) Full Face or Panel Mounted



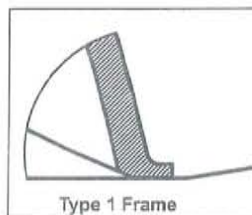
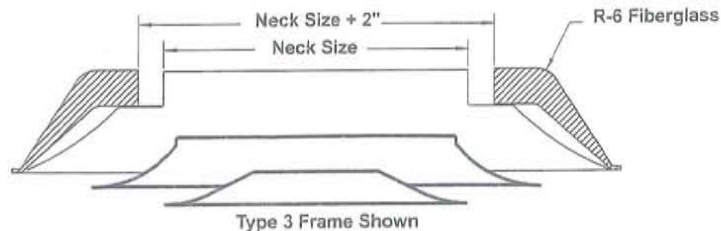
Frame Type 4
(Spline) Full Face or Panel Mounted



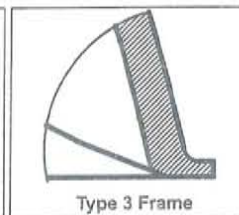
Ceiling Module	Face Size	Nominal Round Duct Sizes	Frame Types
12 x 12	12 x 12	4, 5, 6, 7, 8	1, 2, 3, 4
24 x 24	24 x 24	6, 8, 10, 12, 14, 15	1, 2, 3, 4
24 x 24 (Panel)	12 x 12	4, 5, 6, 7, 8	2, 3, 4



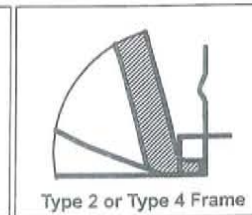
Optional Molded Insulation Blanket
Insulation is R-6 where blanket has the most depth. One-inch clearance on each side of neck is left for insulated duct connection. 24 x 24-inch full face models only.



Type 1 Frame

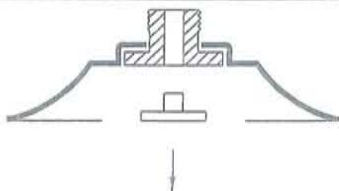


Type 3 Frame

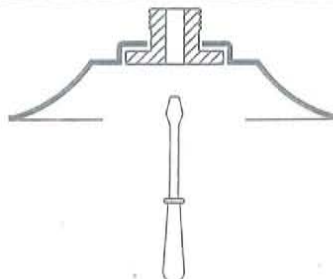


Type 2 or Type 4 Frame

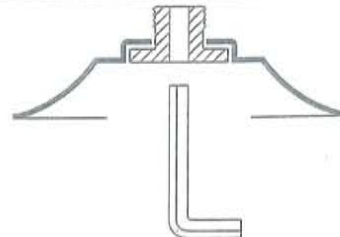
ADJUSTING OPTIONAL DAMPER - REMOVING CENTER CONE



1. Remove center plug.



2. Insert screwdriver through hex hole to adjust optional damper.



3. Insert hex key (by others) and unscrew center hub to remove center cone.

PERFORMANCE DATA

Diffusers

TMS - SQUARE CEILING - ROUND NECK - HIGH PERFORMANCE

		Neck Velocity	400	500	600	700	800	1000	1200	1400	1600
		Velocity Pressure	0.010	0.016	0.022	0.031	0.040	0.062	0.090	0.122	0.160
12" x 12" Module Size	4" Dia.	Airflow, cfm	35	44	52	61	70	87	105	122	140
		Total Pressure	0.012	0.018	0.026	0.035	0.046	0.072	0.104	0.141	0.184
		NC (Noise Criteria)	-	-	-	-	12	20	26	31	36
		Throw feet	1-1-3	1-2-4	1-2-4	2-3-5	2-3-6	2-4-7	3-4-7	3-5-8	4-6-8
		Airflow, cfm	55	68	82	95	109	136	164	191	218
	5" Dia.	Total Pressure	0.015	0.023	0.033	0.044	0.058	0.091	0.131	0.178	0.232
		NC (Noise Criteria)	-	-	-	-	15	23	29	34	39
		Throw feet	1-2-4	2-2-5	2-3-6	2-3-7	2-4-7	3-5-8	4-6-9	4-7-10	5-7-10
		Airflow, cfm	79	98	118	137	157	196	236	275	314
	6" Dia.	Total Pressure	0.018	0.028	0.041	0.056	0.073	0.114	0.164	0.223	0.291
		NC (Noise Criteria)	-	-	-	13	18	25	32	37	42
		Throw feet	2-2-5	2-3-6	2-3-7	3-4-8	3-5-9	4-6-10	5-7-11	5-8-12	6-9-13
		Airflow, cfm	107	134	160	187	214	267	321	374	428
	7" Dia.	Total Pressure	0.020	0.031	0.045	0.062	0.081	0.126	0.181	0.247	0.322
		NC (Noise Criteria)	-	-	-	15	20	28	34	39	44
		Throw feet	2-3-5	2-3-7	3-4-8	3-5-9	4-5-10	4-7-12	5-8-13	6-9-14	7-10-15
		Airflow, cfm	140	175	209	244	279	349	419	489	559
	8" Dia.	Total Pressure	0.022	0.035	0.050	0.069	0.090	0.140	0.202	0.275	0.359
		NC (Noise Criteria)	-	-	12	17	22	29	36	41	46
		Throw feet	2-3-6	3-4-8	3-5-9	4-5-11	4-6-12	5-8-13	6-9-14	7-11-16	8-12-17
		Airflow, cfm	79	98	118	137	157	196	236	275	
20" x 20" Module Size	6" Dia.	Total Pressure	0.016	0.025	0.035	0.048	0.063	0.099	0.142	0.193	
		NC (Noise Criteria)	-	-	-	14	18	24	30	34	
		Throw feet	1-1-4	1-2-4	2-3-5	2-3-6	2-4-7	3-4-9	4-5-10	4-6-12	
		Airflow, cfm	140	175	209	244	279	349	419	489	
	8" Dia.	Total Pressure	0.017	0.027	0.038	0.057	0.067	0.105	0.152	0.207	
		NC (Noise Criteria)	-	-	-	13	19	23	29	34	
		Throw feet	2-4-5	2-4-6	3-4-8	4-6-9	5-7-12	5-8-13	5-9-15	5-10-17	
		Airflow, cfm	218	273	327	382	436	545	654	764	
	10" Dia.	Total Pressure	0.020	0.032	0.045	0.062	0.081	0.126	0.180	0.240	
		NC (Noise Criteria)	-	-	17	20	24	31	36	41	
		Throw feet	2-5-7	3-6-10	4-7-11	4-8-14	5-9-15	6-9-18	7-11-19	8-12-21	
		Airflow, cfm	79	98	118	137	157	196	236	275	314
24" x 24" Module Size	6" Dia.	Total Pressure	0.016	0.025	0.035	0.048	0.063	0.099	0.142	0.193	0.252
		NC (Noise Criteria)	-	-	-	12	16	22	28	32	36
		Throw feet	1-2-4	1-2-4	2-3-5	2-3-6	2-4-7	3-4-9	4-5-11	4-6-12	5-7-13
		Airflow, cfm	140	175	209	244	279	349	419	489	559
	8" Dia.	Total Pressure	0.016	0.025	0.036	0.049	0.064	0.101	0.145	0.197	0.257
		NC (Noise Criteria)	-	-	11	15	19	26	31	36	40
		Throw feet	2-3-5	2-3-7	3-4-8	3-5-9	4-5-11	4-7-13	5-8-14	6-9-16	7-11-17
		Airflow, cfm	218	273	327	382	436	545	654	764	873
	10" Dia.	Total Pressure	0.017	0.026	0.037	0.051	0.066	0.103	0.149	0.202	0.264
		NC (Noise Criteria)	-	-	14	18	22	29	34	39	43
		Throw feet	2-4-7	3-5-9	4-5-11	4-6-13	5-7-14	6-9-17	7-11-18	8-13-20	10-14-21
		Airflow, cfm	314	393	471	550	628	785	942	1100	1257
	12" Dia.	Total Pressure	0.017	0.027	0.038	0.052	0.068	0.106	0.153	0.208	0.272
		NC (Noise Criteria)	-	11	16	21	24	31	36	41	45
		Throw feet	3-5-9	4-6-11	5-7-14	5-8-16	6-9-18	8-11-20	9-14-22	11-16-23	12-18-25
		Airflow, cfm	428	535	641	748	855	1069	1283	1497	1710
	14" Dia.	Total Pressure	0.018	0.028	0.040	0.054	0.071	0.110	0.159	0.216	0.282
		NC (Noise Criteria)	-	13	18	22	26	33	38	43	47
		Throw feet	4-5-11	5-7-14	5-8-16	6-10-19	7-11-21	9-14-23	11-16-25	13-19-27	14-21-29
		Airflow, cfm	491	614	736	859	982	1227	1473	1718	1963
	15" Dia.	Total Pressure	0.018	0.028	0.040	0.055	0.072	0.112	0.162	0.220	0.287
		NC (Noise Criteria)	-	13	19	23	27	34	39	44	48
		Throw feet	4-6-12	5-7-15	6-9-18	7-10-21	8-12-22	10-15-25	12-18-27	14-21-29	16-22-31
		Airflow, cfm	491	614	736	859	982	1227	1473	1718	1963

www.titus-hvac.com | www.titus-energy-solutions.com

F

PERFORMANCE DATA

TESTED SPECIFICATIONS

SQUARE CEILING DIFFUSERS ROUND NECK

Available Models:

- | | |
|---------------|------------|
| TMS | • Steel |
| TMS-AA | • Aluminum |

Square ceiling diffusers shall be Titus Model TMS (steel) or TMS-AA (aluminum with steel support bar) of the sizes and mounting types shown on the plans and outlet schedule. The TMS and TMS-AA models shall have three cones, which give a uniform face size and appearance when different neck sizes are used in the same area. All cones shall be one piece precision die-stamped; the back cone shall also include an integrally drawn inlet (welded-in inlets and corner joints are not acceptable). The two inner cones shall be constructed as a single, removable inner cone assembly for easy installation and cleaning. The inner cone assembly must have a hole with removable plug in the center to allow quick adjustment of an optional inlet damper without removing the inner cone assembly. Diffusers shall be constructed of 24-gauge steel (TMS) or 0.040 aluminum (TMS-AA).

The finish shall be #26 white. The finish shall be an anodic acrylic paint, baked at 315°F for 30 minutes. The pencil hardness must be HB to H. The paint must pass a 100-hour ASTM B117 Corrosive Environments Salt Spray Test without creepage, blistering or deterioration of film. The paint must pass a 250-hour ASTM D870 Water Immersion Test. The paint must also pass the ASTM D2794 Reverse Impact Cracking Test with a 50-inch pound force applied. Optional round damper shall be constructed of heavy gauge steel. Damper must be operable from the face of the diffuser. Optional sectorizing baffles shall be available to restrict the discharge air in certain directions.

Optional molded insulation blanket shall be available. The insulation will be R-6, foil-backed and provided an additional 1-inch gap around the neck to install insulated flex duct.

The manufacturer shall provide published performance data for the square diffuser. The diffuser shall be tested in accordance with ANSI/ASHRAE Standard 70-2006.

MODEL NUMBER SPECIFICATION

Model				Module Size		Finish		Accessories	
Full Face				12x12 (note 2)		01	Aluminum	Equalizing Grid, Round	EG
TMS	XX	XX x XX	X	20x20 (note 5)		26	White	(1) 90° Sectorizing Baffle	1SB
Neck Size	4, 5, 6, 7, 8, 10, 12, 14, 15	Border		24x24 (note 3)		XX		(2) 90° Sectorizing Baffle	2SB
		Surface Mount	1					(3) 90° Sectorizing Baffle	3SB
		Snap-In	2					Earthquake Tabs	EQT
		Lay-In	3					Insulation Blanket	IB (note 1)
		Spline	4					XX-XXX	XXX
								Optional Damper (note 4)	
								D-100	Radial, Round Neck
								AG-100	Radial, Round Neck
								D-75	Opposed Blade, Round Neck
								AG-75	Opposed Blade, Round Neck
								AG-85	Butterfly
								AG-65	Combination

Note 1: Available on TMS 24"x24" full-face Borders 1, 2, 3 and 4.
 Note 2: Available in neck sizes 4, 5, 6, 7 & 8 only.
 Note 3: Available in neck sizes 6, 8, 10, 12, 14 & 15 only.
 Note 4: See damper model for size availability.
 Note 5: Available in neck sizes 6, 8, & 10 only.

Model				Module Size		Finish		Accessories	
Full Face, Aluminum				24 x 24		01	Aluminum	Equalizing Grid, Round	EG
TMS-AA	XX	24 x 24	X			26	White	(1) 90° Sectorizing Baffle	1SB
Neck Size	6, 8, 10, 12, 14, 15	Border				XX		(2) 90° Sectorizing Baffle	2SB
		Surface Mount	1					(3) 90° Sectorizing Baffle	3SB
		Lay-In	3					Earthquake Tabs	EQT
								Insulation Blanket	IB (note 1)
								XX-XXX	XXX
								Optional Damper (note 2)	
								D-100	Radial, Round Neck
								AG-100	Radial, Round Neck
								D-75	Opposed Blade, Round Neck
								AG-75	Opposed Blade, Round Neck
								AG-85	Butterfly
								AG-65	Combination

Note 1: Available on TMS-AA 24" x 24" full face borders 1, 2, 3, and 4.
 Note 2: See damper model for size availability.

CEILING REGISTER (C)



AeroBlade Return Grilles (continued)

AeroBlade Grilles

25 (RL, RS)

1/2-INCH SPACING - STEEL

Available 30° Deflection Models:

25RL
25RS

Products Include:

- Material: Roll-formed Steel.
- Welded Border.
- Standard Finish - #26 White.
- Available Border Types:
 - #1 - Surface Mount
 - #2 - Snap-In
 - #3 - Lay-In
 - #4 - Spline
- Countersunk Screw Holes.
- #8 x 1 1/4-inch Long Phillips Flat Head Sheet Metal Screws, Painted White.
- Optional Steel Opposed-Blade Damper.

25RL

- 1/2-inch blade spacing.
- 30° fixed deflection.
- Reinforced corners.
- Blades parallel to the long dimension.
- 20-gauge border.

25RS

- Same as 25RL with blades parallel to the short dimension.

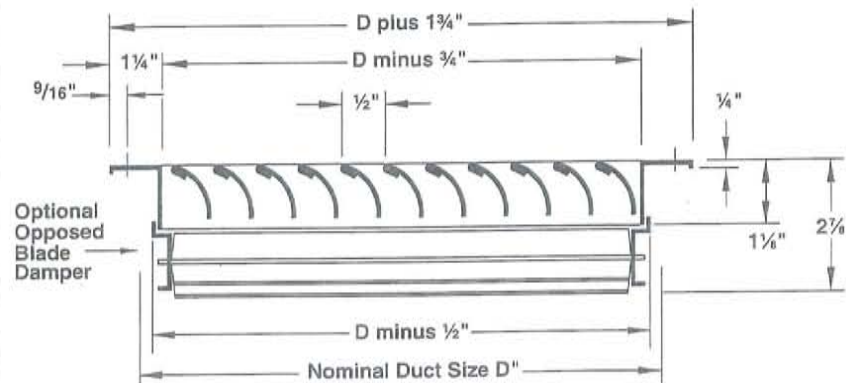


25 (RL, RS)

For Performance Data, please refer to page G29.

For Suggested Specification, please refer to page G35.

30° Deflection Models: 25RL/25RS - Border Type 1

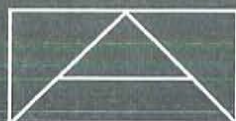
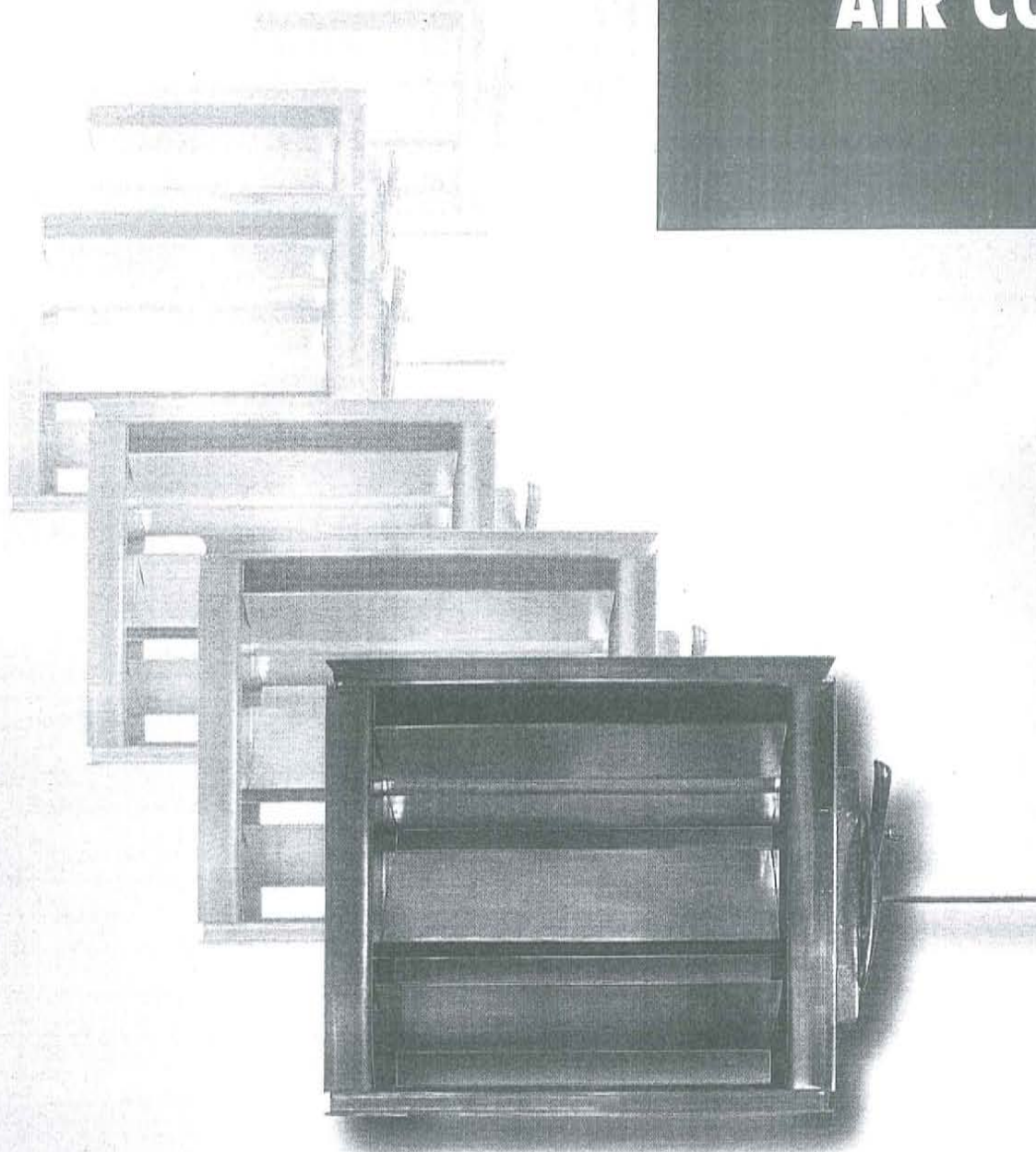


Available sizes (D" x D") are 6 x 4 inches through 48 x 48 inches in 1-inch increments. Odd and fractional sizes are available at additional cost.

25 (RL, RS)

AIR CONTROL VALVES

AIR CONTROL VALVES



Anemostat[®]
A MESTEK COMPANY

The First Name in Air Diffusion

LPL2 Low Pressure Loss Air Control Valve

PRODUCT DESCRIPTION

APPLICATIONS

- Use as pressure reducing valves for volume control of single duct systems.
- LPL2 valves with operators are designed to function with automatic controls.
- LPL2 valves with locking quadrant adjustment are used for manually setting damper position and locking in place.

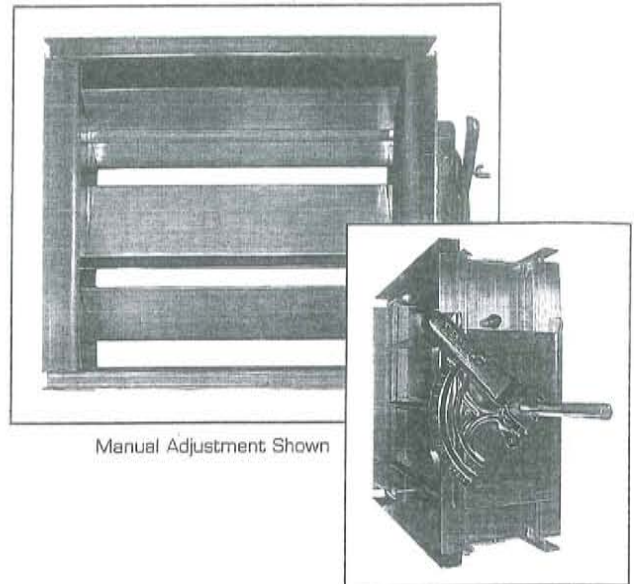
PRODUCT FEATURES

- Airfoil blades resulting in low air pressure loss
- 4" opposed blades for low sound levels and uniform flow
- Designed for duct flange mounting or slip-in applications
- Available with manual locking quadrant, pneumatic or electric actuator. Locking quadrant shipped loose for field assembly.
- 1/2" diameter shaft extension kit shipped loose with all units.
- Minimum size is 7" wide x 11" high. Maximum size is 60" wide x 72" high
- Minimum torque required is 5 in-lbs per square foot of damper area.

CONSTRUCTION DETAILS

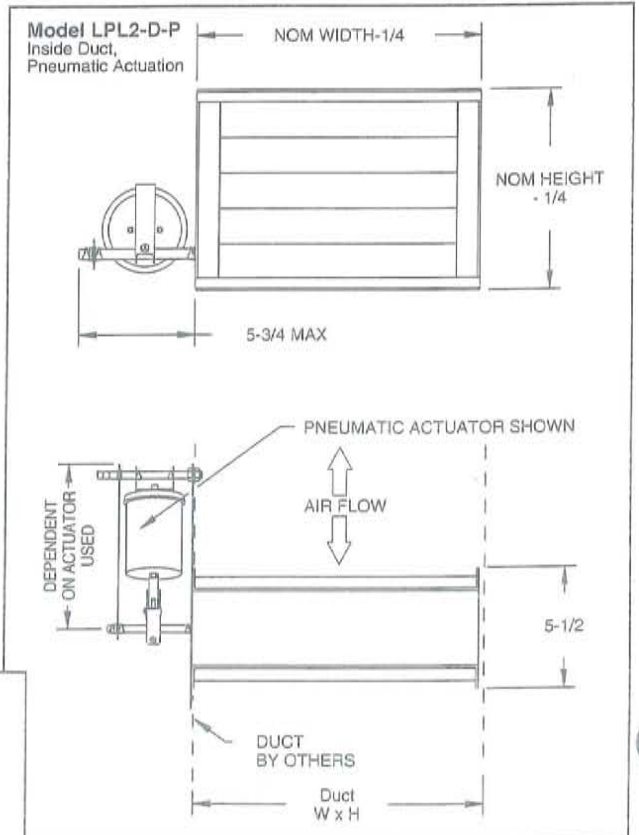
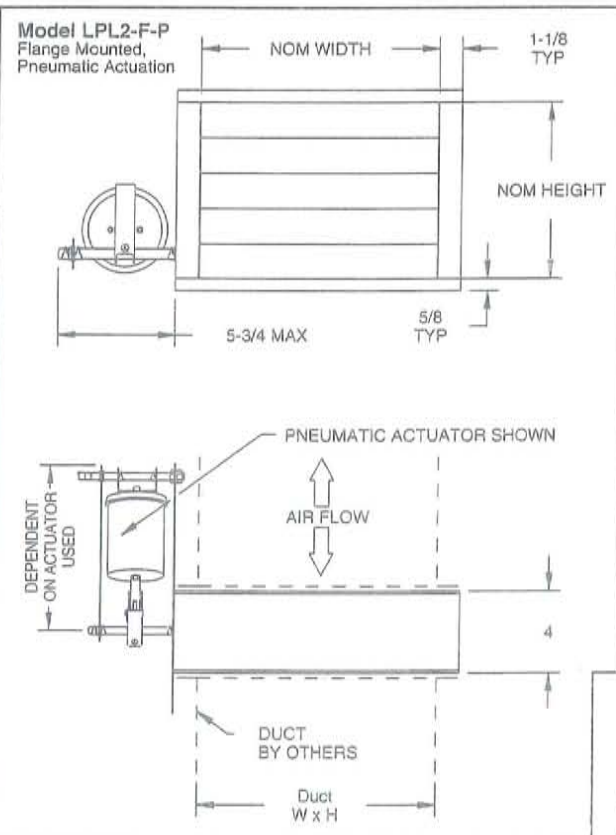
- Extruded aluminum frame and airfoil blades
- Mill finish
- 1/2" plated steel hex shafts eliminate blade slip
- Synthetic, molded shaft bearings (optional oil impregnated bronze bearings)
- Vinyl blade seals and stainless steel, compression type jamb seals

NOTE: Damper can be rotated 180° for LH or RH operator location



Manual Adjustment Shown

• Model LPL2-F-M Flange Mounted, Manual Adjustment	• Model LPL2-D-M Inside Duct, Manual Adjustment
• Model LPL2-F-P Flange Mounted, Pneumatic Actuation	• Model LPL2-D-P Inside Duct, Pneumatic Actuation
• Model LPL2-F-E Flange Mounted, Electric Actuation	• Model LPL2-D-E Inside Duct, Electric Actuation



American Standard

Style That Works Better

 **BARrier FREE**

LUCERNE™ WALL-HUNG LAVATORY

- Wall-hung sink
- Vitreous china
- Front overflow
- D-shaped bowl
- Self-draining deck area with contoured back and side splash shields
- Faucet ledge

Faucet holes on 203mm (8") centers (illus.):

- ☐ **0356.028** For exposed bracket support
Shown with 4801.862 Amarilis Heritage faucet with Triune Cross handles (not included)
- ☐ **0356.015** For wall hanger (included) or concealed arms support
- ☐ **0356.037** For wall hanger (included) or concealed arms support
 - Extra right-hand hole
- ☐ **0356.073** For wall hanger (included) or concealed arms support
 - Extra left-hand hole

Faucet holes on 102mm (4") centers:

- ☐ **0355.027** For exposed bracket support
- ☐ **0355.012** For wall hanger (included) or concealed arms support
- ☐ **0355.034** For wall hanger (included) or concealed arms support
 - Extra right-hand hole
- ☐ **0355.056** For wall hanger (included) or concealed arms support
 - Extra left-hand hole

Single center faucet hole (illus.):

- ☐ **0356.041** For exposed bracket support
Shown with 1340.000 metering faucet (not included)
- ☐ **0356.421** For wall hanger (included) or concealed arms support
- ☐ **0356.137** For wall hanger (included) or concealed arms support
 - Extra right-hand hole
- ☐ **0356.115** For wall hanger (included) or concealed arms support
 - Extra left-hand hole

Nominal Dimensions:

521 x 464mm
(20-1/2" x 18-1/4")

Bowl sizes:

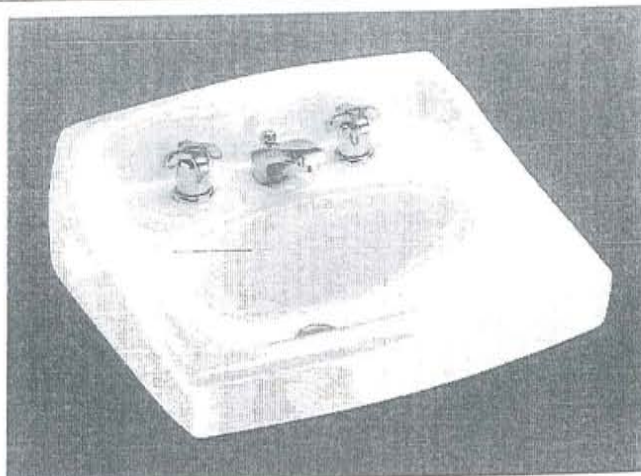
381mm (15") wide
254mm (10") front to back
165mm (6-1/2") deep

Compliance Certifications -

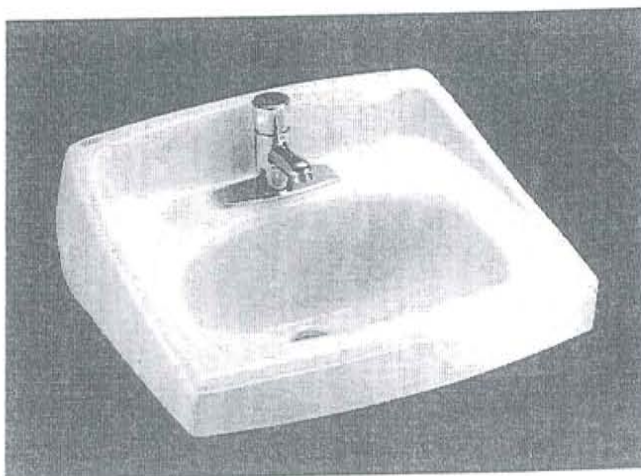
Meets or Exceeds the Following Specifications:

- ASME A112.19.2 for Vitreous China Fixtures

LUCERNE™
WALL-HUNG LAVATORY
VITREOUS CHINA



0356.028



0356.041

SEE REVERSE FOR ROUGHING-IN DIMENSIONS

To Be Specified:

- ☐ Color: ☐ White ☐ Bone ☐ Silver
- ☐ ☐ Black ☐ Linen
- ☐ Faucet*:
- ☐ Faucet Finish:
- ☐ Supplies:
- ☐ 1-1/4" Trap:
- ☐ Nipple:
- ☐ Bracket Support (by others):
- ☐ Concealed Arms Support (by others):

* See faucet section for additional models available



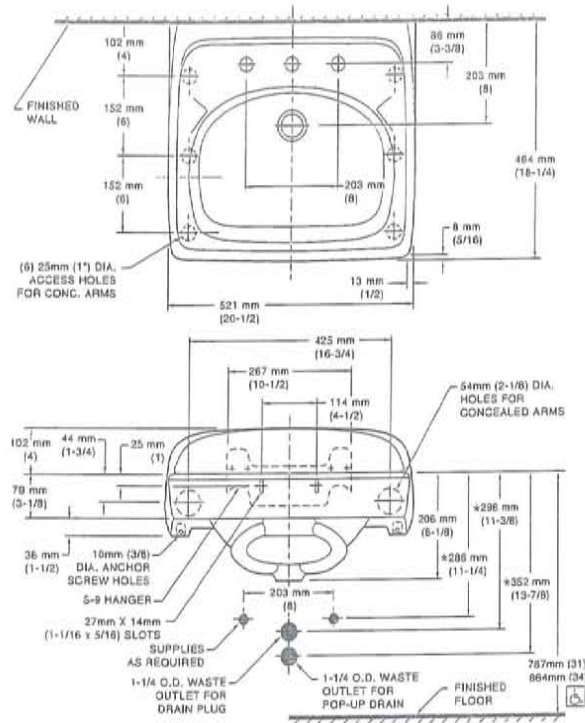
MEETS THE AMERICANS WITH DISABILITIES ACT GUIDE-
LINES AND ANSI A117.1 ACCESSIBLE AND USABLE
BUILDINGS AND FACILITIES - CHECK LOCAL CODES.
Top of front rim mounted 864mm (34") from finished floor.

American Standard

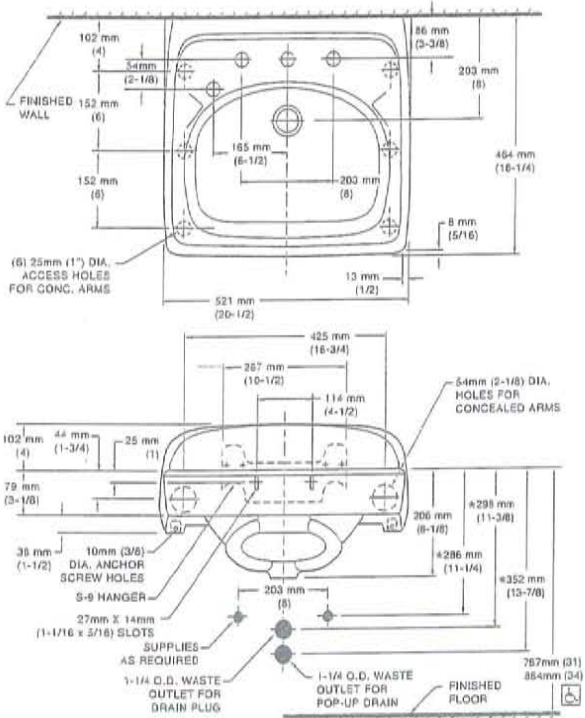
Style That Works Better

 BARRIER FREE

0356.015 8" CTRS FOR WALL HANGER OR CONCEALED ARMS

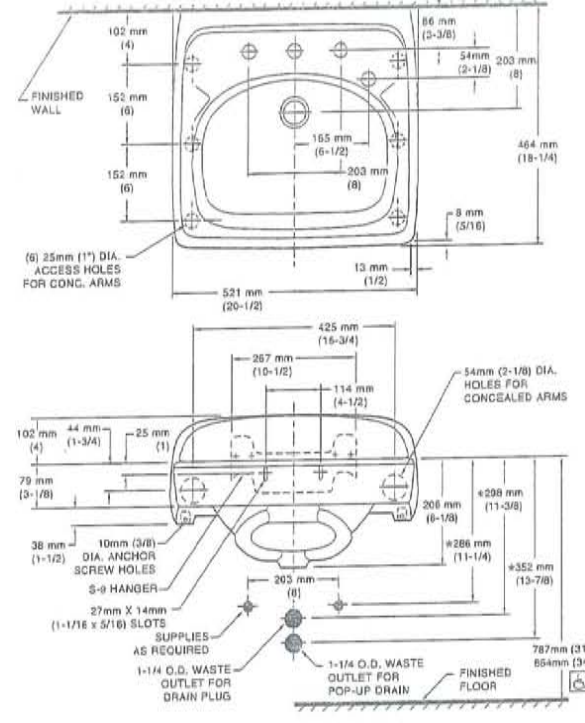


0356.073 8" CTRS FOR WALL HANGER OR CONCEALED ARMS EXTRA LEFT HAND HOLE



LUCERNE™
WALL-HUNG LAVATORY
VITREOUS CHINA

0356.037 8" CTRS FOR WALL HANGER OR CONCEALED ARMS EXTRA RIGHT HAND HOLE



NOTES:
* DIMENSIONS SHOWN FOR LOCATION OF SUPPLIES AND "P" TRAP ARE SUGGESTED.
PROVIDE SUITABLE REINFORCEMENT FOR ALL WALL SUPPORTS.
FITTINGS NOT INCLUDED AND MUST BE ORDERED SEPARATELY.
CONCEALED ARM SUPPORT AS REQUIRED TO BE FURNISHED BY OTHERS.

IMPORTANT: Dimensions of fixtures are nominal and may vary within the range of tolerances established by ANSI Standard A112.19.2. These measurements are subject to change or cancellation. No responsibility is assumed for use of superseded or voided pages.

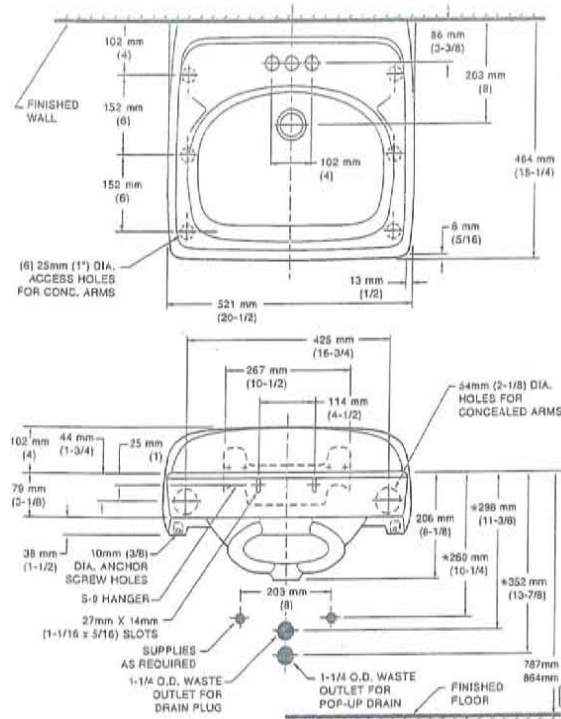
 LAVATORY DESIGNED TO MEET ADA HANDICAPPED GUIDELINES WITH MOUNTING HEIGHT SET AT 864MM (34") ABOVE FINISHED FLOOR.

American Standard

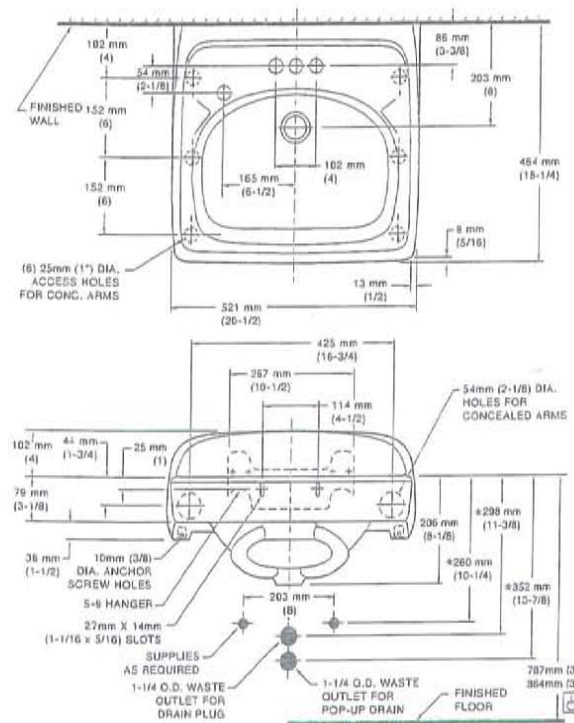
Style That Works Better

 BARRIER FREE

0355.012 4" CTRS FOR WALL HANGER OR CONCEALED ARMS

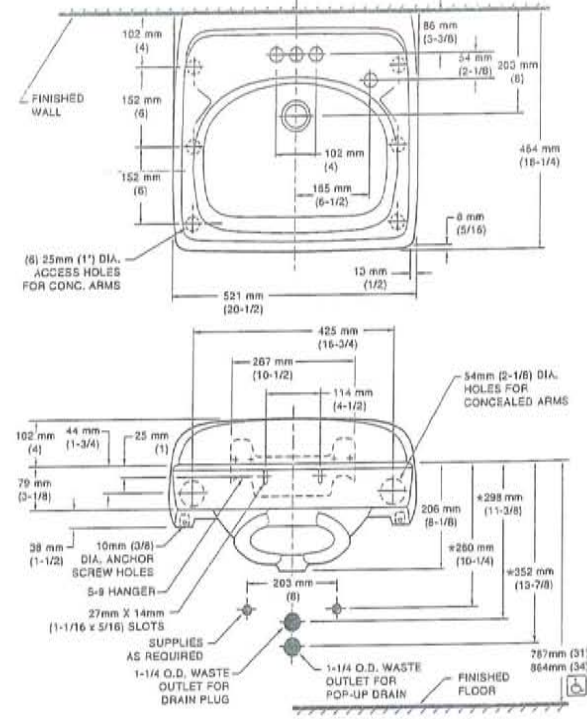


0355.056 4" CTRS FOR WALL HANGER OR CONCEALED ARMS EXTRA LEFT HAND HOLE




LUCERNE™
WALL-HUNG LAVATORY
VITREOUS CHINA

0355.034 4" CTRS FOR WALL HANGER OR CONCEALED ARMS EXTRA RIGHT HAND HOLE



NOTES:
* DIMENSIONS SHOWN FOR LOCATION OF SUPPLIES AND "P" TRAP ARE SUGGESTED.
PROVIDE SUITABLE REINFORCEMENT FOR ALL WALL SUPPORTS.
FITTINGS NOT INCLUDED AND MUST BE ORDERED SEPARATELY.
CONCEALED ARM SUPPORT AS REQUIRED TO BE FURNISHED BY OTHERS.

IMPORTANT: Dimensions of fixtures are nominal and may vary within the range of tolerances established by ANSI Standard A112.19.2. These measurements are subject to change or cancellation. No responsibility is assumed for use of superseded or voided pages.

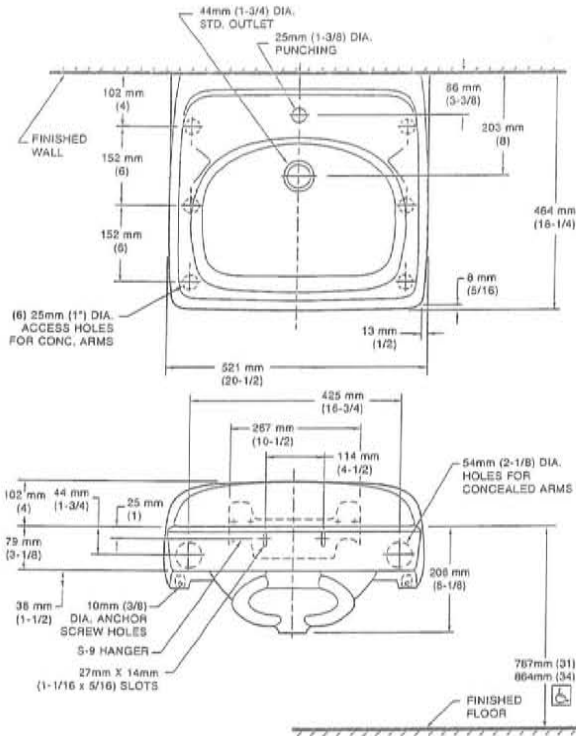
 LAVATORY DESIGNED TO MEET ADA HANDICAPPED GUIDELINES WITH MOUNTING HEIGHT SET AT 864MM (34") ABOVE FINISHED FLOOR.

American Standard

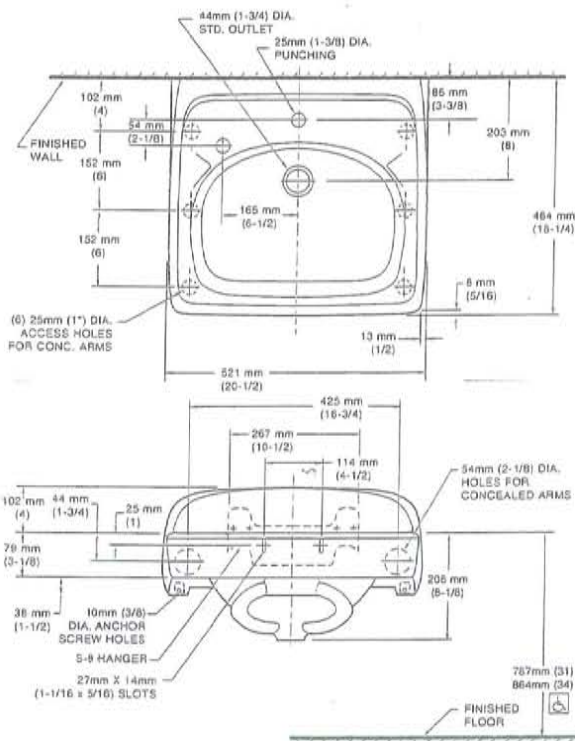
Style That Works Better

 BARRIER FREE

0356.421 SINGLE CENTER HOLE FOR WALL HANGER OR CONCEALED ARMS

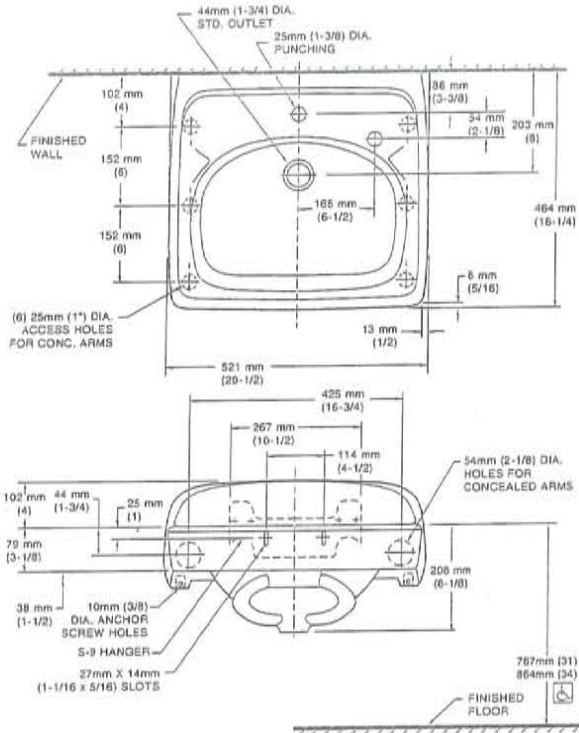


0356.115 SINGLE CENTER HOLE FOR WALL HANGER OR CONCEALED ARMS WITH EXTRA LEFT HAND HOLE



LUCERNE™
WALL-HUNG LAVATORY
VITREOUS CHINA

0356.137 SINGLE CENTER HOLE FOR WALL HANGER OR CONCEALED ARMS WITH EXTRA RIGHT HAND HOLE



NOTES:
* DIMENSIONS SHOWN FOR LOCATION OF SUPPLIES AND "P" TRAP ARE SUGGESTED.
PROVIDE SUITABLE REINFORCEMENT FOR ALL WALL SUPPORTS.
FITTINGS NOT INCLUDED AND MUST BE ORDERED SEPARATELY.
CONCEALED ARM SUPPORT AS REQUIRED TO BE FURNISHED BY OTHERS.

IMPORTANT: Dimensions of fixtures are nominal and may vary within the range of tolerances established by ANSI Standard A112.19.2. These measurements are subject to change or cancellation. No responsibility is assumed for use of superseded or voided pages.

 LAVATORY DESIGNED TO MEET ADA HANDICAPPED GUIDELINES WITH MOUNTING HEIGHT SET AT 864MM (34") ABOVE FINISHED FLOOR.



Surgeon Scrub-Up Pedal Valve

Model No: 54T5332A-R5

COMPLIES WITH:

- CSA certified.
- Complies to ASME Standard A112.18.1.
- IAPMO listed
- (Contact Delta Representative for State and/or Local Approvals)
- Long foot pedals ADA compliant and meets Handicapped Accessibility Standard ASME A117.1 of less than 5 lbs operating force



SPECIFICATION:

- Foot Pedal Mixing Valve
- Spout: R5 - Gooseneck-6.0" radius-12.0" height(unmounted)-Standard rigid/swivel field installation unless LS Limited swing option selected-Vandal resistant .090" wall thickness
- Outlet#: 2 - Vandal Resistant Laminar Flow Outlet- 1.5 USGPM (5.7 L/Min) flow rate at 60 psi- with Antimicrobial by AgION™
- Forged brass wallmount self close foot pedal valve
- Two aluminum indexed pedals
- Polished chrome plated finish
- With inlet stops
- With outlet volume control stop
- Set screw wall flanges
- Deckmount brass flange,
- 3/8" IPS shank, and locknut

OPERATION:

- Not Available

(Dimensional drawing on following page)

Delta reserves the right (1) to make changes to specifications and materials, and (2) to change or discontinue models, both without notice or obligation. Dimensions are for reference. Measurement may vary plus or minus 6mm(0.25"). Mounting locations are suggested only. Check with local codes for requirements in your area. This spec was produced November 02, 2011.

Delta Faucet Company - 55 East 111th St. - Indianapolis, Indiana, USA 46280 - (317) 848-1812
Delta Faucet Canada - 395 Matheson Blvd E - Mississauga, Ontario, Canada L4Z 2H2 - (905) 712-3030

