

American Standard

Style That Works Better



LUCERNE™ WALL-HUNG LAVATORY

- Wall-hung sink
- Vitreous china
- Front overflow
- D-shaped bowl
- Self-draining deck area with contoured back and side splash shields
- Faucet ledge

Faucet holes on 203mm (8") centers (illus.):

- ☐ 0356.028 For exposed bracket support
Shown with 4801.862 Amaris Heritage faucet with Triune Cross handles (not included)

- ☐ 0356.015 For wall hanger (included) or concealed arms support

- ☐ 0356.037 For wall hanger (included) or concealed arms support
 - Extra right-hand hole

- ☐ 0356.073 For wall hanger (included) or concealed arms support
 - Extra left-hand hole

Faucet holes on 102mm (4") centers:

- ☐ 0355.027 For exposed bracket support
- ☐ 0355.012 For wall hanger (included) or concealed arms support

- ☐ 0355.034 For wall hanger (included) or concealed arms support
 - Extra right-hand hole

- ☐ 0355.056 For wall hanger (included) or concealed arms support
 - Extra left-hand hole

Single center faucet hole (illus.):

- ☐ 0356.041 For exposed bracket support
Shown with 1340.000 metering faucet (not included)

- ☐ 0356.421 For wall hanger (included) or concealed arms support

- ☐ 0356.137 For wall hanger (included) or concealed arms support
 - Extra right-hand hole

- ☐ 0356.115 For wall hanger (included) or concealed arms support
 - Extra left-hand hole

Nominal Dimensions:

521 x 464mm
(20-1/2" x 18-1/4")

Bowl sizes:

381mm (15") wide
254mm (10") front to back
165mm (6-1/2") deep

Compliance Certifications -

Meets or Exceeds the Following Specifications:

- ASME A112.19.2 for Vitreous China Fixtures

LUCERNE™ WALL-HUNG LAVATORY VITREOUS CHINA



0356.028



0356.041

SEE REVERSE FOR ROUGHING-IN DIMENSIONS

To Be Specified:

- ☐ Color: ☐ White ☐ Bone ☐ Silver
☐ Black ☐ Linen

- ☐ Faucet*:
- ☐ Faucet Finish:
- ☐ Supplies:
- ☐ 1-1/4" Trap:
- ☐ Nipple:
- ☐ Bracket Support (by others):
- ☐ Concealed Arms Support (by others):

* See faucet section for additional models available



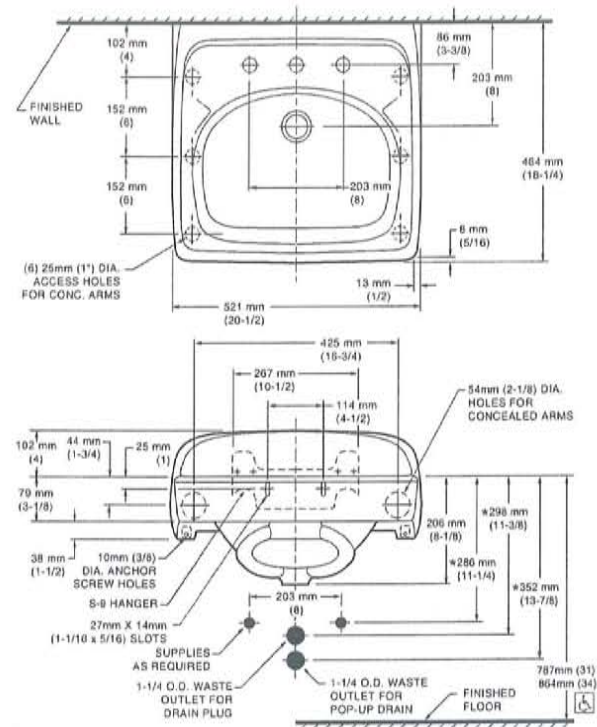
MEETS THE AMERICANS WITH DISABILITIES ACT GUIDE-
LINES AND ANSI A117.1 ACCESSIBLE AND USABLE
BUILDINGS AND FACILITIES - CHECK LOCAL CODES.
Top of front rim mounted 864mm (34") from finished floor.

American Standard

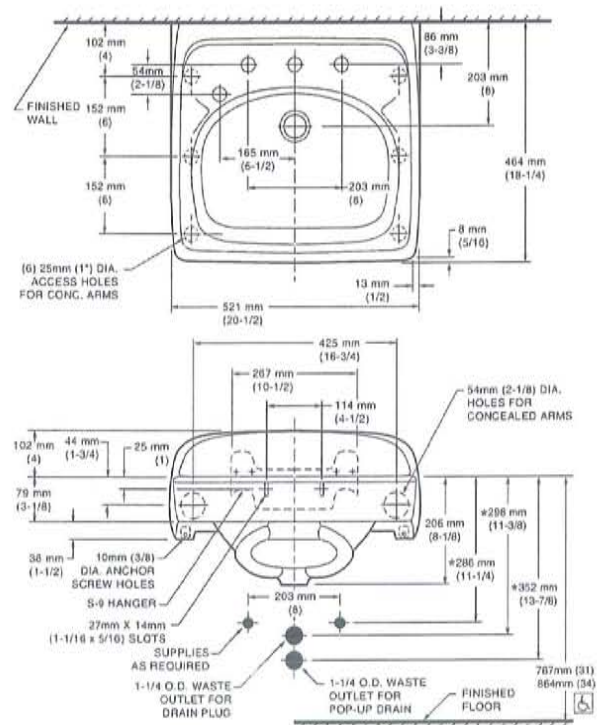
Style That Works Better

 **BARrier FREE**

0356.015 8" CTRS FOR WALL HANGER OR CONCEALED ARMS

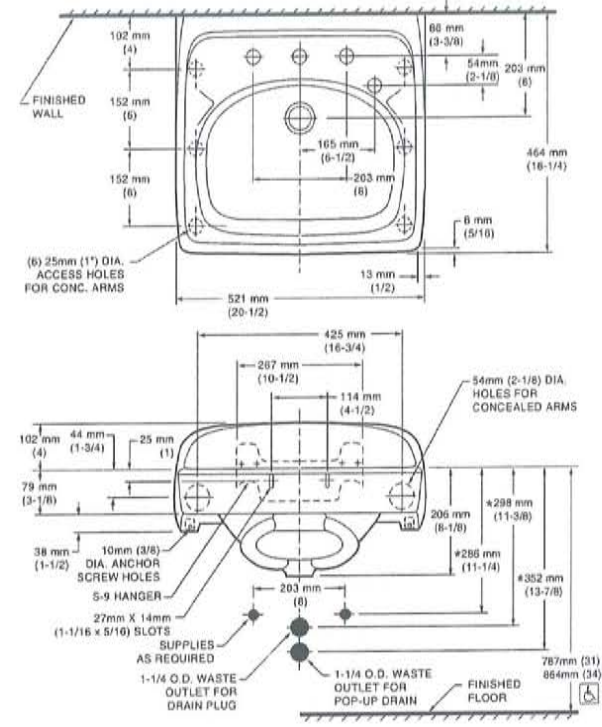


0356.073 8" CTRS FOR WALL HANGER OR CONCEALED ARMS EXTRA LEFT HAND HOLE



LUCERNE™
WALL-HUNG LAVATORY
VITREOUS CHINA

0356.037 8" CTRS FOR WALL HANGER OR CONCEALED ARMS EXTRA RIGHT HAND HOLE



NOTES:
* DIMENSIONS SHOWN FOR LOCATION OF SUPPLIES AND "P" TRAP ARE SUGGESTED.
PROVIDE SUITABLE REINFORCEMENT FOR ALL WALL SUPPORTS.
FITTINGS NOT INCLUDED AND MUST BE ORDERED SEPARATELY.
CONCEALED ARM SUPPORT AS REQUIRED TO BE FURNISHED BY OTHERS.

IMPORTANT: Dimensions of fixtures are nominal and may vary within the range of tolerances established by ANSI Standard A112.19.2. These measurements are subject to change or cancellation. No responsibility is assumed for use of superseded or voided pages.

 **LAVATORY DESIGNED TO MEET ADA HANDICAPPED GUIDELINES WITH MOUNTING HEIGHT SET AT 864MM (34") ABOVE FINISHED FLOOR.**

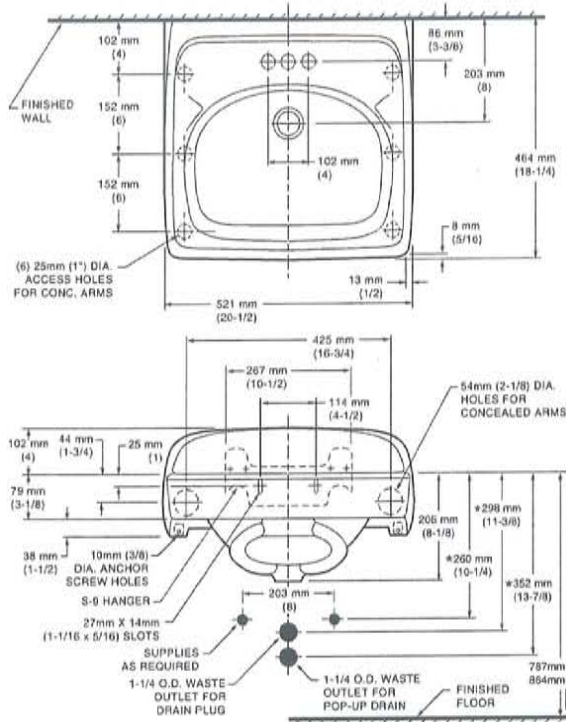
American Standard

Style That Works Better

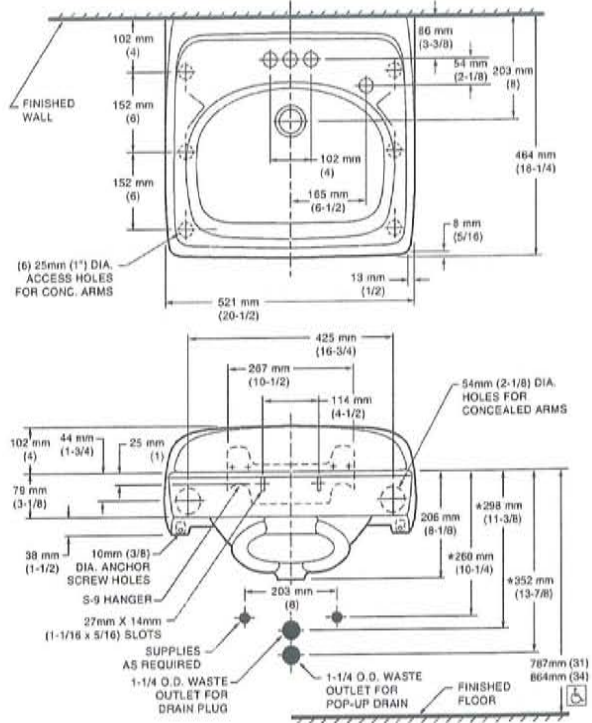
 BARRIER FREE

LUCERNE™
WALL-HUNG LAVATORY
VITREOUS CHINA

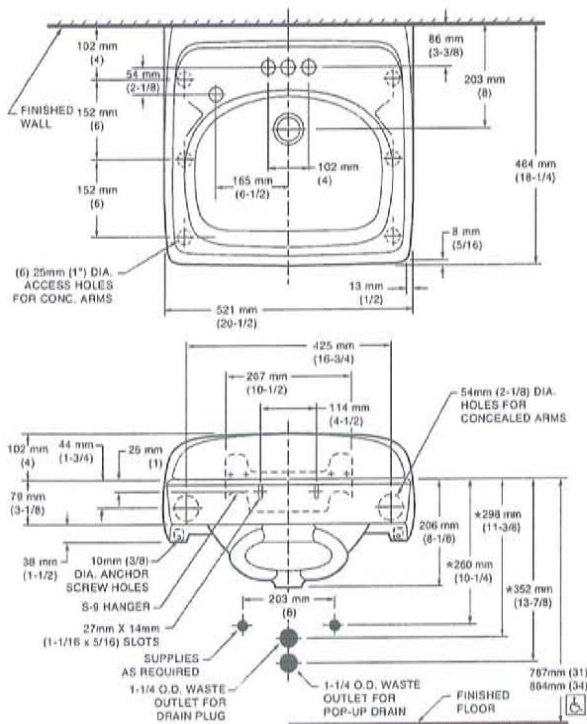
0355.012 4" CTRS FOR WALL HANGER OR CONCEALED ARMS



0355.034 4" CTRS FOR WALL HANGER OR CONCEALED ARMS EXTRA RIGHT HAND HOLE



0355.056 4" CTRS FOR WALL HANGER OR CONCEALED ARMS EXTRA LEFT HAND HOLE

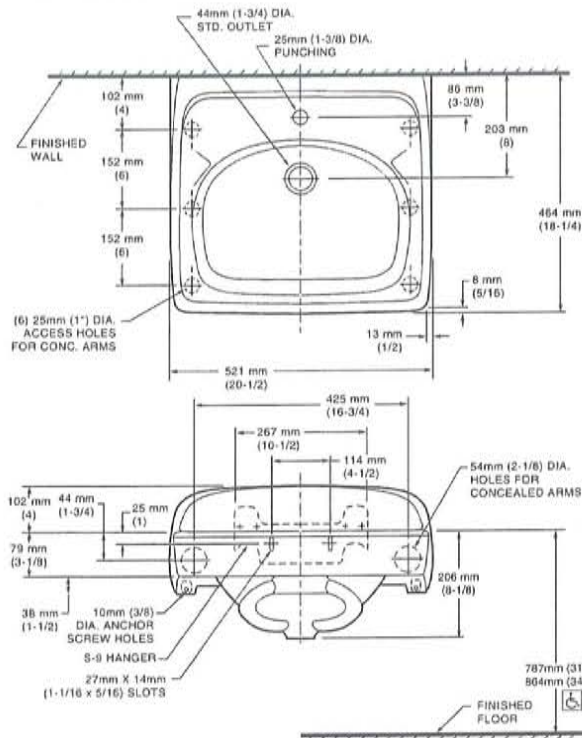


NOTES:
* DIMENSIONS SHOWN FOR LOCATION OF SUPPLIES AND "P" TRAP ARE SUGGESTED.
PROVIDE SUITABLE REINFORCEMENT FOR ALL WALL SUPPORTS.
FITTINGS NOT INCLUDED AND MUST BE ORDERED SEPARATELY.
CONCEALED ARM SUPPORT AS REQUIRED TO BE FURNISHED BY OTHERS.

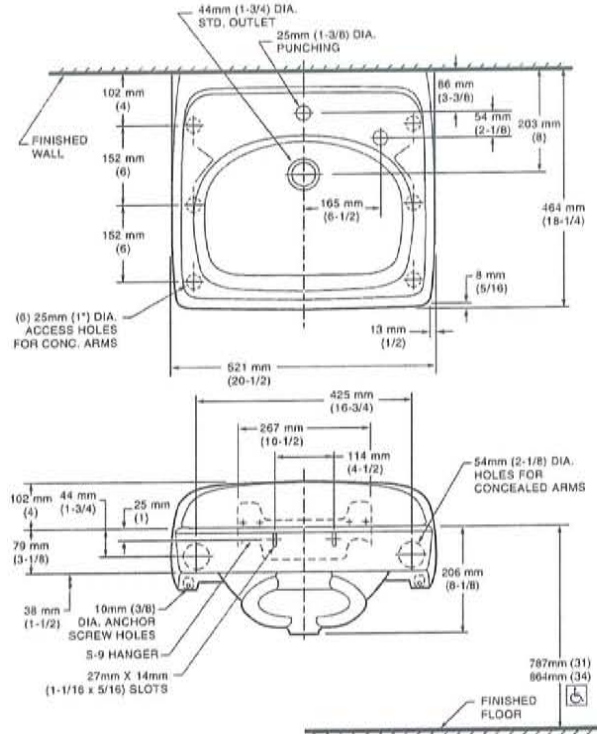
IMPORTANT: Dimensions of fixtures are nominal and may vary within the range of tolerances established by ANSI Standard A112.19.2. These measurements are subject to change or cancellation. No responsibility is assumed for use of superseded or voided pages.

 **LAVATORY DESIGNED TO MEET ADA HANDICAPPED GUIDELINES WITH MOUNTING HEIGHT SET AT 864MM (34") ABOVE FINISHED FLOOR.**

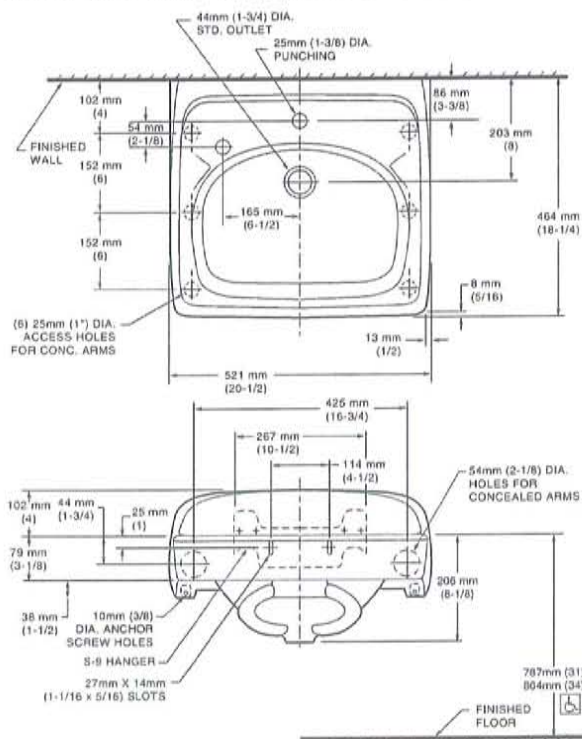
0356.421 SINGLE CENTER HOLE FOR WALL HANGER OR CONCEALED ARMS



0356.137 SINGLE CENTER HOLE FOR WALL HANGER OR CONCEALED ARMS WITH EXTRA RIGHT HAND HOLE



0356.115 SINGLE CENTER HOLE FOR WALL HANGER OR CONCEALED ARMS WITH EXTRA LEFT HAND HOLE



NOTES:
* DIMENSIONS SHOWN FOR LOCATION OF SUPPLIES AND "P" TRAP ARE SUGGESTED.

PROVIDE SUITABLE REINFORCEMENT FOR ALL WALL SUPPORTS. FITTINGS NOT INCLUDED AND MUST BE ORDERED SEPARATELY. CONCEALED ARM SUPPORT AS REQUIRED TO BE FURNISHED BY OTHERS.

IMPORTANT: Dimensions of fixtures are nominal and may vary within the range of tolerances established by ANSI Standard A112.19.2. These measurements are subject to change or cancellation. No responsibility is assumed for use of superseded or voided pages.



LAVATORY DESIGNED TO MEET ADA HANDICAPPED GUIDELINES WITH MOUNTING HEIGHT SET AT 864MM (34") ABOVE FINISHED FLOOR.



-  **6830.000 8" Widespread Lavatory**
Rigid gooseneck spout. 1.5 gpm pressure compensating aerator. Less drain. Less handles. Rigid copper connection.
-  **6831.000 8" Widespread Lavatory**
Rigid gooseneck spout. 1.5 gpm pressure compensating aerator. Pop-up drain. Less handles. Rigid copper connection.
-  **6832.000 8" Widespread Lavatory**
Rigid gooseneck spout. 1.5 gpm pressure compensating aerator. Grid strainer drain. Less handles. Rigid copper connection.

Technical drawing of a three-burner gas cooktop showing dimensions in millimeters (mm) and inches (in). The drawing includes the following dimensions and labels:

- Overall Width:** 203mm (8)
- Overall Depth:** 270mm (10-5/8)
- Distance between burner centers:** 127mm (5)
- Distance from front panel to burner base:** 165mm (6-1/2)
- Distance from front panel to burner base (right side):** 89mm (3-1/2)
- Distance from front panel to burner base (left side):** 38mm (1-1/2) MAX.
- Distance from front panel to burner base (center):** 51mm (2) DIA. TYP.
- Distance from front panel to burner base (right side):** 29mm (1-1/8) DIA.
- Distance from front panel to burner base (left side):** 35mm (1-3/8) DIA. MTG. HOLES
- Connection Type:** RIGID COPPER CONNECTION
- Ground Joint:** FOR GROUND JOINT OR 1/2" O.D. SLIP CONNECTION

Cast brass valve bodies with rigid copper 8" (203mm) connections. Amarilis 1/4 turn washerless ceramic disc valve cartridges. Fixed brass spout. One-half inch male inlet shanks with brass coupling nuts and shank nuts. All brass drain body (on applicable models) with 1-1/4" (32mm) tailpiece. 1.5gpm/5.7L/min. maximum flow rate.

Pressure Compensating Aerator: Provides a constant water flow of 1.5 gpm throughout the pressure range.

Brass Construction: Durable - Excellent in high use applications. Ideal for prolonged contact with water.

Ceramic Disc Valve Cartridges: Assures a lifetime of drip-free performance.

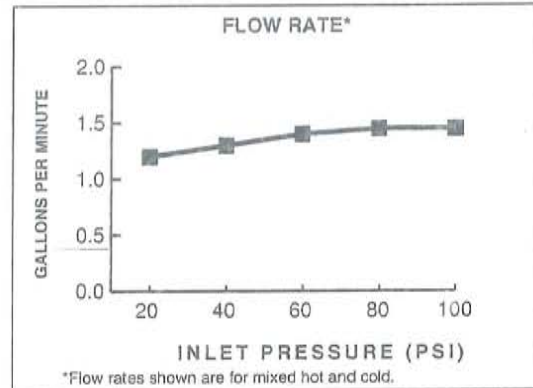
Low Lead: Meets NSF Standard 61/Section 9 & Prop 65 lead requirements.

Two handle widespread lavatory faucet shall feature cast brass valve bodies with 8" rigid copper connections. All brass shank nuts and coupling nuts. Shall feature water-conserving 1.5 gpm/5.7L/min. pressure compensating aerator. Shall also feature 1/4 turn washerless ceramic disc valve cartridges. Fitting shall be American Standard Model #680_.000.____ and handle kit # 0000.____.____.

CODES AND STANDARDS

These products meet or exceed the following codes and standards:

ASME A112.18.1
CSA B 125
NSF 61/Section 9



Product Number	Description	Finish
		Polished Chrome
		002
6830.000	Lavatory Faucet. 1.5 gpm/5.7L/min pressure compensating aerator. Less drain. Less handles.	
6831.000	Lavatory Faucet. 1.5 gpm/5.7L/min pressure compensating aerator. Pop-up drain. Less handles.	
6832.000	Lavatory Faucet. 1.5 gpm/5.7L/min pressure compensating aerator. Grid strainer drain. Less handles.	

Handles must be ordered separately.

The above fittings will accept the following Amarilis-Series handles.

Wrist Blade	Lever
372H	342H
372V	342V

Meets the American Disabilities Act Guidelines and **ANSI A117.1** Requirements for the physically challenged.

Other Aerators Available:

Part Suffix	Description
V15	1.5 gpm Pressure Compensating Vandal-Resistant Aerator
L15	1.5 gpm Pressure Compensating Laminar Flow
LV15	1.5 gpm Pressure Compensating Vandal-Resistant Laminar Flow Outlet
V05	0.5 gpm Pressure Compensating Vandal-Resistant Spray



WHITBY™

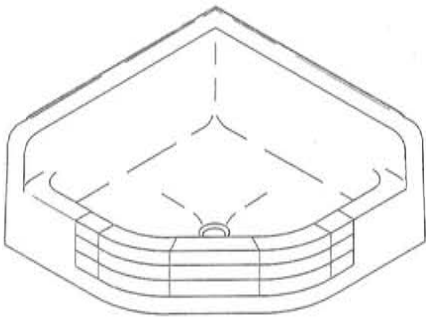
SERVICE SINK
K-6710

Features

- KOHLER cast iron
- Acid-resistant enamel finish
- Corner sink
- Floor-mounted
- 28" (711 mm) x 28" (711 mm)
- Optional K-8940 coated wire rim guard

Codes/Standards Applicable

- Specified model meets or exceeds the following:
- ASME A112.19.1/CSA B45.2



Colors/Finishes

- 0: White

Accessories:

- NA: None applicable

Specified Model

Model	Description	Colors/Finishes
K-6710	Whitby™ service sink	<input type="checkbox"/> 0 White
Optional Accessories		
K-8940	Coated wire rim guard	<input type="checkbox"/> NA

Product Specification:

The floor-mount corner service sink shall be 28" (711 mm) in length and 28" (711 mm) in width. Sink shall be made of cast iron with acid resistant enamel finish. Sink shall have an optional coated wire rim guard (K-8940). Sink shall be Kohler Model K-6710-0.

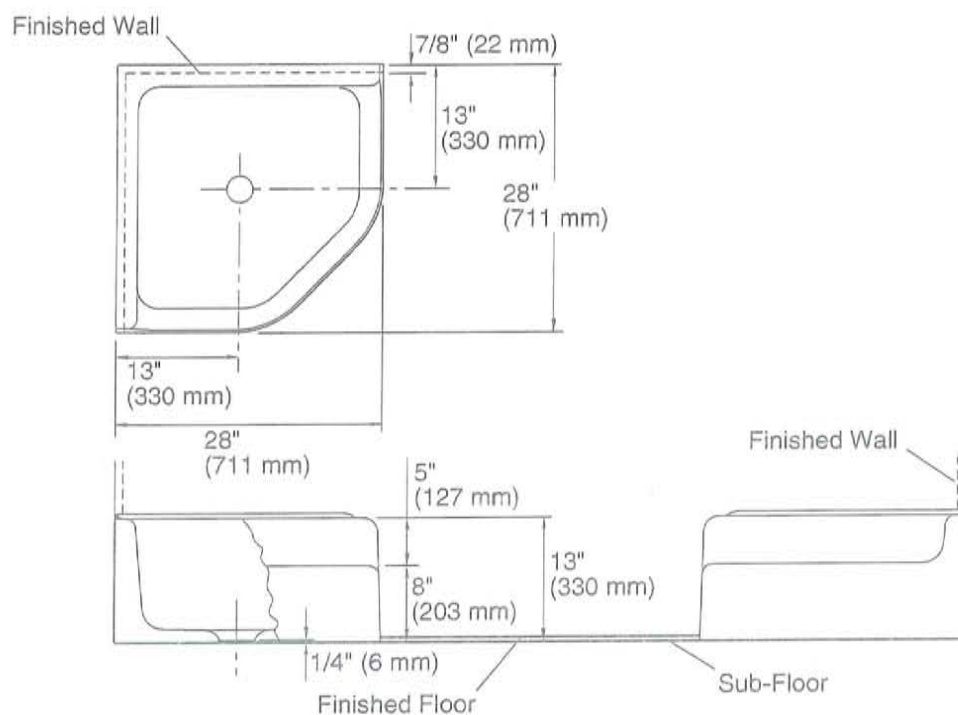
WHITBY™

Technical Information

Fixture:*		Basin area	Water depth
Sink		23" (584 mm) x 23" (584 mm)	6-3/4" (171 mm)
Drain Hole	Ø 2-7/8" (73 mm)		
* Approximate measurements for comparison only.			

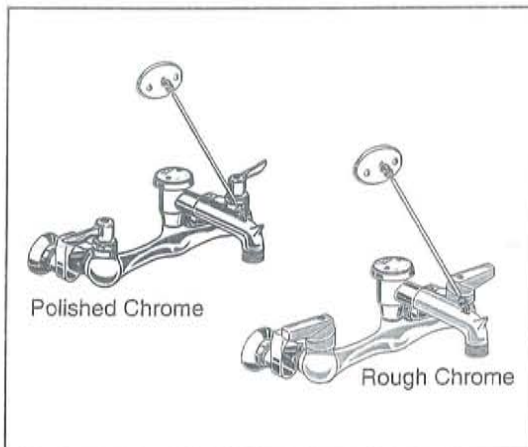
Installation Notes

Install this product according to the installation guide.



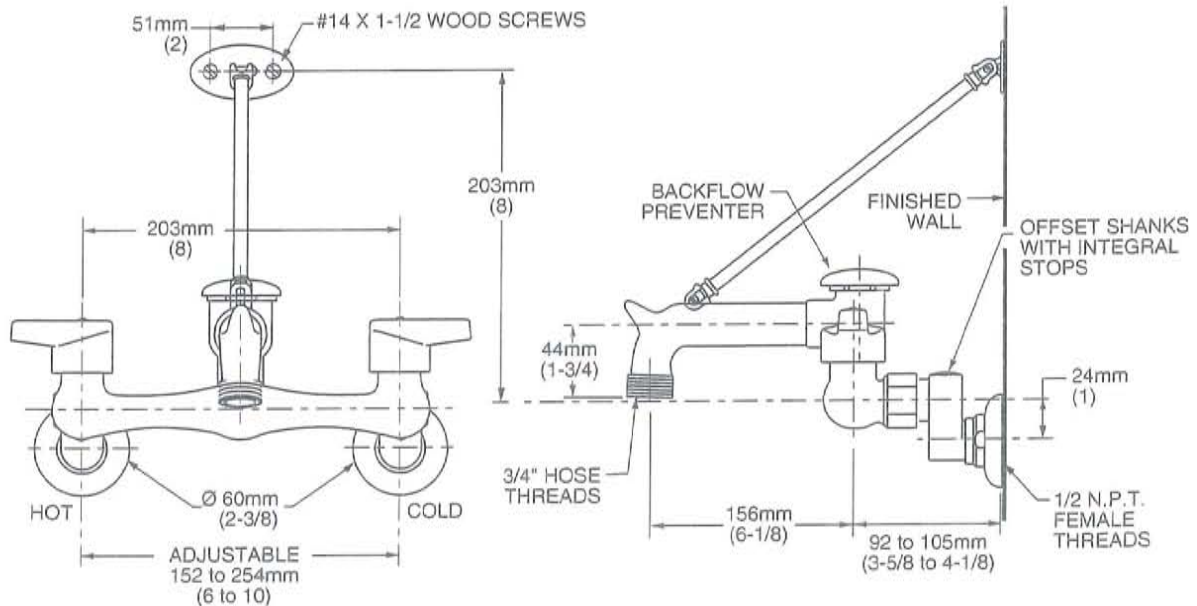
Product Diagram

EXPOSED YOKE WALL-MOUNT UTILITY FAUCET WITH TOP BRACE



MODEL NUMBER:

- ☐ **8344.112 Exposed Yoke Wall-Mount Utility Faucet**
Top brace. Vacuum breaker. Offset shanks with integral stops. Metal lever handles. 6" threaded spout. 1/2" NPT female inlets.



GENERAL DESCRIPTION:

Cast brass body. Metal lever handles with hot and cold indicators. 1/4 turn ceramic disc valve cartridges that are reversible for use on both "hot" and "cold" sides. Vacuum breaker prevents back flow. Offset shanks with integral stops. Spout, top braced to wall, with bucket hook and threaded hose end. 1/2" female inlets adjustable from 6" to 10".

PRODUCT FEATURES:

Cast Brass Construction: Durable - Excellent in high use applications.

Ceramic Disc Valve Cartridges: Assure a lifetime of drip-free performance.

Vacuum Breaker: Prevents back flow.

Offset Shanks with Integral Stops: Permits easy and convenient access. Adjustable rough-in from 6 to 10 inches.

Top Brace: Provides additional support.

Choice of Finishes: Available in Polished or Rough Chrome.

SUGGESTED SPECIFICATION

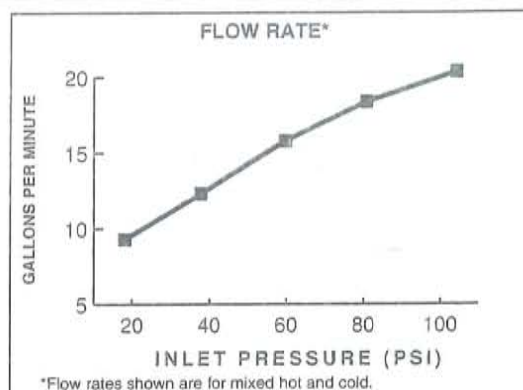
Exposed yoke wall-mount utility faucet shall feature a cast brass body and spout with bucket hook, top brace, and metal lever handles. Shall feature vacuum breaker and offset shanks with integral stops. Shall also feature 1/4 turn washerless ceramic disc valve cartridges. Fitting shall be American Standard Model # 8344.112.

EXPOSED YOKE WALL-MOUNT UTILITY FAUCET WITH TOP BRACE


CODES AND STANDARDS

These products meet or exceed the following codes and standards:

ASME A112.18.1
CSA B 125
ASSE 1001
ANSI A117.1



Product Number	Description	Finish Options	
		Polished Chrome 002	Rough Chrome 004
8344.112	Exposed yoke wall-mount utility faucet. Top brace. Vacuum breaker. Offset shanks with integral stops.		

 Meets the American Disabilities Act Guidelines and **ANSI A117.1** Requirements for the physically challenged.

American Standard

Style That Works Better

CLINIC SERVICE SINK
VITREOUS CHINA

CLINIC SERVICE SINK WITH STAINLESS STEEL BOLT COVERS

- Vitreous china
- Flushing rim
- Siphon jet flushing action
- 1-1/2" brass top spud
- 4" floor outlet
- Stainless steel bolt covers

9504.010 Service sink

Available Components:

- ☐ **037640-0020A** Cast metal loose strainer
- ☐ **7832017.075** Stainless steel 10" (254mm) guard (3 shown)

Nominal Dimensions:

749 x 508 x 457mm
(29-1/2" x 20" x 18")

Compliance Certifications -

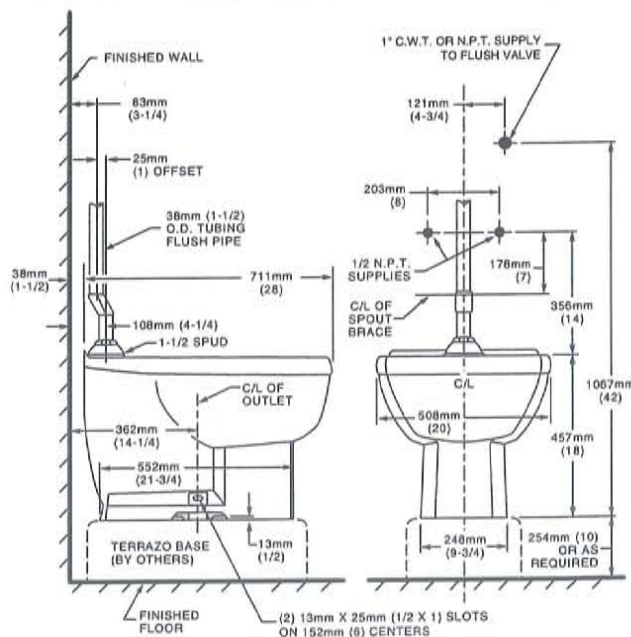
Meets or Exceeds the Following Specifications:

- ASME A112.19.2 for Vitreous China Fixtures



To Be Specified:

- ☐ **Faucet:** 8345.118 service sink faucet with brace, 152mm (6") elbow handles, 375mm (14-3/4") wall to spout outlet, screwdriver stops
- ☐ **Alternative Faucet:**
- ☐ **Pedal Valve:** 7679.012 self-closing, double pedal valve, screwdriver stops, wall-mounted
- ☐ **Flush Valve:** Sloan Royal 117 HYVO with 25mm (1") offset
- ☐ **Alternate Flush Valve**
- ☐ **Rim Guard:** Stainless Steel 279mm (11") 7832.017 (3) if required
- ☐ **Bedpan Cleaner 7880.024 assembly includes:**
 - ☐ 7837.024 Vacuum Breaker
 - ☐ 7866.015 Nozzle with Hook
 - ☐ 7679.012 Pedal Valve
 - ☐ 7544.018 Loose Key Supply
- ☐ **Strainer:** 037640-0020A Metal Loose Strainer
- ☐ **Optional Terrazzo Base (by others)**



NOTES:
TERRAZZO BASE AS SHOWN, FIELD FABRICATED (BY OTHERS).
OUTLET FOR STANDARD DRAIN CONNECTION.
TO COMPLY WITH AREA CODE GOVERNING THE HEIGHT OF VACUUM BREAKER ON FLUSH VALVE, THE PLUMBER MUST VERIFY DIMENSIONS SHOWN FOR SUPPLY ROUGHING.
FLUSH VALVE AND FITTINGS NOT INCLUDED AND MUST BE ORDERED SEPARATELY.

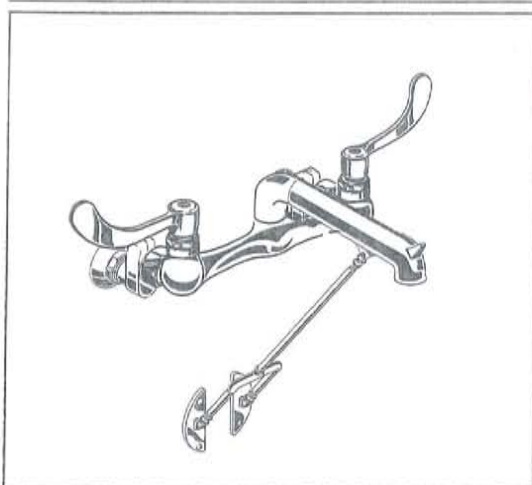
IMPORTANT: Dimensions of fixtures are nominal and may vary within the range of tolerances established by ANSI Standard A112.19.2. These measurements are subject to change or cancellation. No responsibility is assumed for use of superseded or voided pages.

Available in White Only

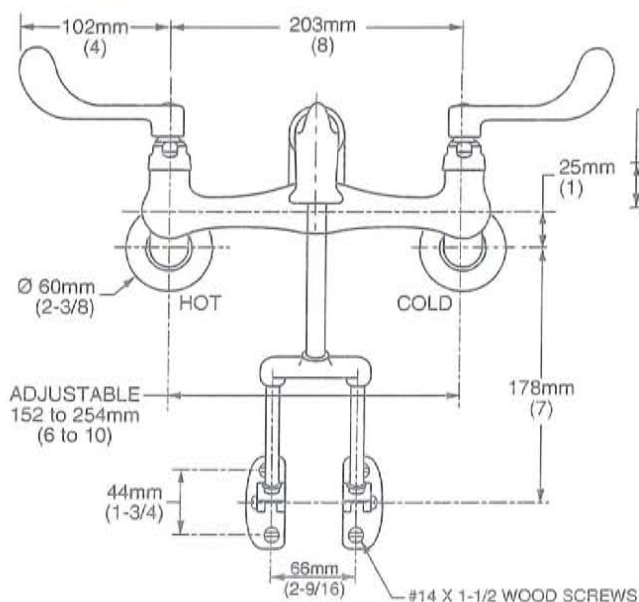
American Standard

Style That Works Better

EXPOSED YOKE WALL-MOUNT UTILITY FAUCET WITH BOTTOM FORK BRACE

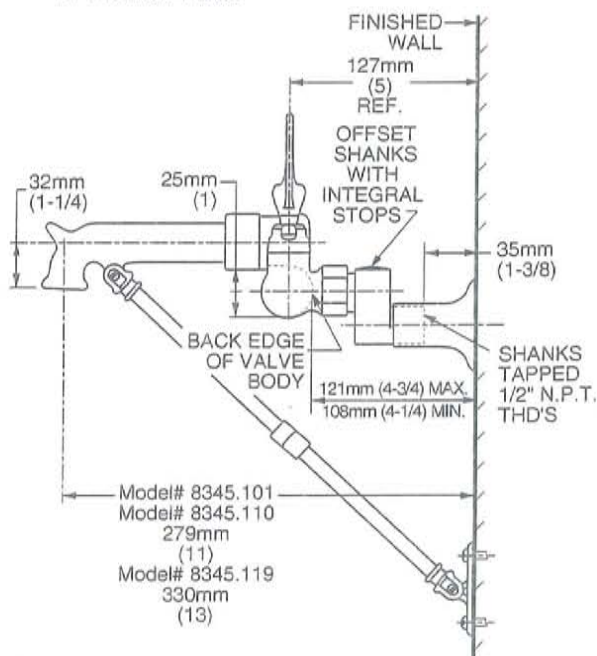


8345.101 Shown



MODEL NUMBER:

- ☐ **8345.101 Exposed Yoke Wall-Mount Utility Faucet**
Bottom fork brace. Offset shanks with integral stops. Brass Wrist Blade Handles. 6" spout with plain end. 1/2" NPT female inlets.
- ☐ **8345.110 Exposed Yoke Wall-Mount Utility Faucet with Vacuum Breaker**
Bottom fork brace. Offset shanks with integral stops. Brass Wrist Blade Handles. 6" spout with Threaded hose end. 1/2" NPT female inlets. Vacuum breaker.
- ☐ **8345.119 Exposed Yoke Wall-Mount Utility Faucet**
Bottom fork brace. Offset shanks with integral stops. Brass Wrist Blade Handles. 8" spout with plain end. 1/2" NPT female inlets.



GENERAL DESCRIPTION:

Cast brass body. Brass wrist blade handles with red and blue color indicators. 1/4 turn ceramic disc valve cartridges that are reversible for use on both "hot" and "cold" sides. Brass spout with bucket hook, bottom fork braced to wall. Vacuum breaker (on model 8345.110) prevents backflow. Offset shanks with integral stops. 1/2" female inlets (adjustable from 6" to 10").

PRODUCT FEATURES:

Cast Brass Construction: Durable - Excellent in high use applications.

Ceramic Disc Valve Cartridges: Assure a lifetime of drip-free performance.

Offset Shanks with Integral Stops: Permits easy and convenient access. Adjustable rough-in from 6 to 10 inches.

Bottom Brace: Provides additional support.

Polished Chrome: Excellent in commercial applications.

SUGGESTED SPECIFICATION

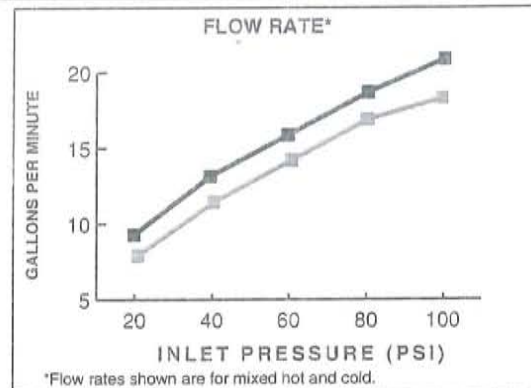
Exposed yoke wall-mount utility faucet shall feature a cast brass body, brass wrist blade handles, brass spout with bucket hook, bottom brace and offset shanks with integral stops. Shall also feature 1/4 turn washerless ceramic disc valve cartridges. Fitting shall be American Standard Model # 8345.____.002.

EXPOSED YOKE WALL-MOUNT UTILITY FAUCET WITH BOTTOM FORK BRACE

CODES AND STANDARDS

These products meet or exceed the following codes and standards:

ASME A112.18.1
CSA B 125
ASSE 1001 (8345.110 ONLY)
ANSI A117.1

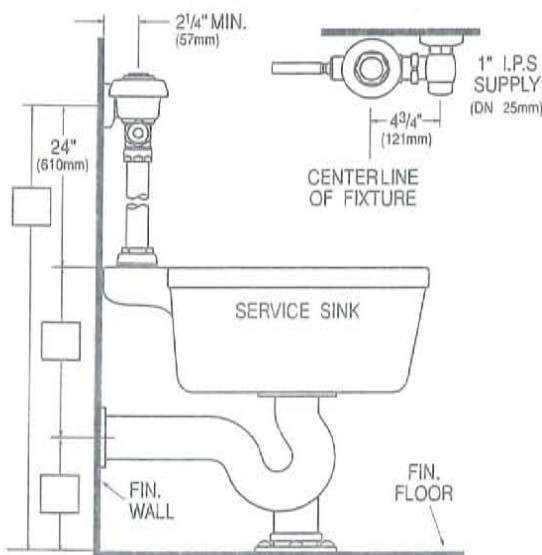
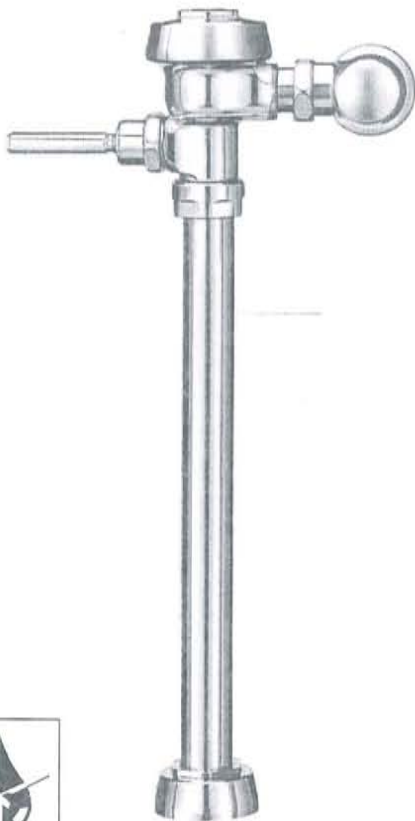


- - Flow rates for 8345.110
- - Flow rates for 8345.101 and 8345.119

Product Number	Description	Finish
		Polished Chrome 002
8345.101	Exposed yoke wall-mount utility faucet. Bottom fork brace. Offset shanks with integral stops. 6" spout with plain end.	
8345.110	Exposed yoke wall-mount utility faucet. Bottom fork brace. Offset shanks with integral stops. 6" spout with threaded end. With Vacuum Breaker	
8345.119	Exposed yoke wall-mount utility faucet. Bottom fork brace. Offset shanks with integral stops. 8" spout with plain end.	



Meets the American Disabilities Act Guidelines and **ANSI A117.1** Requirements for the physically challenged.



Royal® Model Flushometer

117

► Description

Exposed Service Sink Flushometer, for use with top spud Service Sinks.

► Flush Cycle

□ Model 117 (6.5 gpf/24.6 Lpf)

► Specifications

Quiet, Exposed, Diaphragm Type, Chrome Plated Service Sink Flushometer with the following features:

- PERMEX™ Synthetic Rubber Diaphragm with Dual Filtered Fixed Bypass
- ADA Compliant Metal Oscillating Non-Hold-Open Handle with Triple Seal Handle Packing
- 1" I.P.S. Screwdriver Bak-Chek® Angle Stop
- Free Spinning Vandal Resistant Stop Cap
- Adjustable Tailpiece
- High Back Pressure Vacuum Breaker Flush Connection with One-piece Bottom Hex Coupling Nut
- Spud Coupling and Flange for 1 1/2" Top Spud
- Sweat Solder Adapter with Cover Tube and Cast Set Screw Wall Flange
- High Copper, Low Zinc Brass Castings for Dezincification Resistance
- Non-Hold-Open Handle, Fixed Metering Bypass and No External Volume Adjustment to Ensure Water Conservation
- Flush Accuracy Controlled by CiD™ Technology
- Diaphragm, Handle Packing, Stop Seat and Vacuum Breaker molded from PERMEX™ Rubber Compound for Chloramine Resistance
- 100% of the energy used in manufacturing is offset with Renewable Energy Sources – Wind Energy

Valve Body, Cover, Tailpiece and Control Stop shall be in conformance with ASTM Alloy Classification for Semi-Red Brass. Valve shall be in compliance to the applicable sections of ASSE 1037, ANSI/ASME 112.19.2.

► Variations

- H Handle on Front of Valve
- HL-3 3" Metal Oscillating Push Button on front of valve
- O Offset Vacuum Breaker, Specify: 1" - 1 1/2" - 2"
- YJ Split Ring Pipe Support
- YK Solid Ring Pipe Support
- SG SaniGuard® Antimicrobial Handle and Socket

See Accessories Section of the Sloan catalog for details on these and other Flushometer variations.

This space for Architect/Engineer approval

Job Name _____	Date _____
Model Specified _____	Quantity _____
Variations Specified _____	
Customer/Wholesaler _____	
Contractor _____	
Architect _____	

The information contained in this document is subject to change without notice.

SLOAN®

Made in the U.S.A.
SLOAN VALVE COMPANY • 10500 SEYMOUR AVE. • FRANKLIN PARK, IL. 60131
Ph: 1-800-982-5839 or 1-847-671-4300 • Fax: 1-800-447-8329 or 1-847-671-4380
www.sloanvalve.com

American Standard



BARRIER FREE

AFWALL™ ADA RETROFIT

- Wall-mounted flushometer valve toilet
- Vitreous china
- Low-consumption (6.0 Lpf/1.6 gpf)
- EverClean™ anti-microbial surface which inhibits the growth of stain and odor causing bacteria, mold, and mildew
- Elongated bowl
- Powerful direct-fed siphon jet action
- Fully-glazed 2-1/8" trapway
- 10" x 12" water surface area
- Condensation channel
- 1-1/2" inlet spud
- 100% factory flush tested

- ☐ **3355.160** Elongated bowl only, top spud
- ☐ **3356.160** Elongated bowl only, top spud with slotted rim for bedpan holding (White only)
- ☐ **3357.160** Elongated bowl only, back spud
- ☐ **3358.160** Elongated bowl only, back spud with slotted rim for bedpan holding (White only)

Afwall ADA 1.6 replaces standard wall-hung 3.5 GPF or 1.6 GPF models and roughs-in at 410mm (16-1/8") rim height **to meet ADA with no need to modify the existing carrier or through wall supply** (providing centerline of current outlet is 133mm [5-1/4"] above finished floor).

Component Parts:

- ☐ **047007-0070A** Inlet spud (furnished with bowl)
- ☐ **736046-100** Flushometer valve rough-in adapter kit (furnished with bowl)

Nominal Dimensions:

660 x 356 x 419mm
(26" x 14" x 16-1/2")

For Top spud bowls, American Standard kit #736046-100 Flushometer Valve Conversion Kit containing a 25mm (1") chrome-plated street ell, a vacuum breaker, and a 330mm (13") tail piece included to meet minimum 152mm (6") code between bowl and vacuum breaker.

Recommended working pressure—between 25 psi at valve when flushing and 80 psi static

Fixture only, less seat, carrier, bolt caps, and flush valve

Compliance Certifications -

Meets or Exceeds the Following Specifications:

- ASME A112.19.2 for Vitreous China Fixtures
- CAN/CSA International B45

AFWALL™ ADA RETROFIT 1.6 GPF FLUSHOMETER TOILET



SEE REVERSE FOR ROUGHING-IN DIMENSIONS

To Be Specified:

- ☐ Color: ☐ White ☐ Bone ☐ Silver ☐ Linen
- ☐ Seat:
 - ☐ American Standard #5901.100 Heavy duty open front less cover
 - ☐ American Standard #5905.100 Extra heavy duty open front less cover
- ☐ Alternative Seat:
 - ☐ Olsonite #95 open front seat less cover
 - ☐ Church #9500C open front seat less cover
- ☐ Flushometer Valve:
 - ☐ American Standard Selectronic™ #6065.161.002 (Top Spud) Available Nov. 1, 2007
 - ☐ American Standard Selectronic™ #6065.262.007 (Concealed Back Spud) Available Nov. 1, 2007
- ☐ Alternative Flushometer Valve:
 - ☐ Sloan Royal #111 (Top Spud)
 - ☐ Sloan Royal #144-1.5 (Back Spud)



MEETS THE AMERICANS WITH DISABILITIES ACT GUIDELINES AND ANSI A117.1 REQUIREMENTS FOR ACCESSIBLE AND USABLE BUILDING FACILITIES - CHECK LOCAL CODES.

- When installed so top of seat is 432 to 483mm (17" to 19") from the finished floor.

WATER CLOSET (T1)

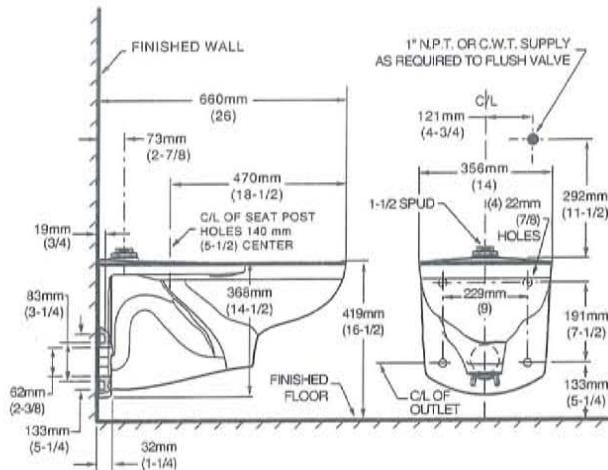
American Standard



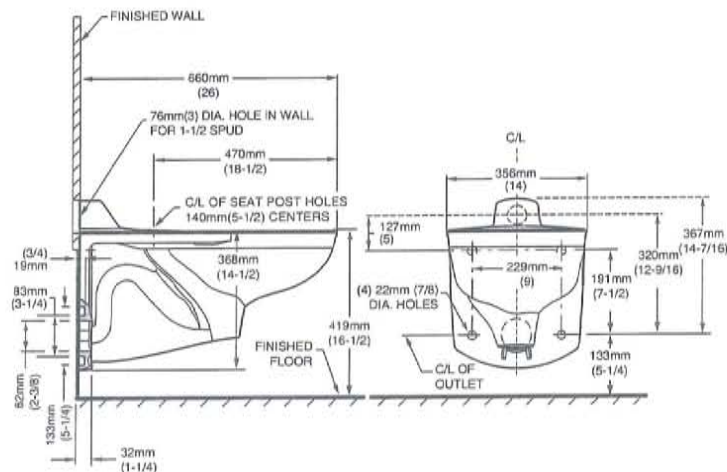
BARRIER FREE

AFWALL™ ADA RETROFIT 1.6 GPF FLUSHOMETER TOILET

3355.160/3356.160



3357.160/3358.160



NOTES:

- Toilet designed to meet ADA accessibility standards when top of seat height set at 432 to 483mm (17" to 19") from finished floor.

PRODUCT 3355.160 AND 3357.160 SHOWN, 3356.160 AND 3358.160 SAME AS EXCEPT WITH SLOTTED RIM FOR BED PAN HOLDING.

* REQUIRES AMERICAN STANDARD KIT 736046-100 TO UPGRADE EXISTING INSTALLATION OF FLUSHOMETER VALVE AND COMPONENTS. WASTE OUTLET SEAL RING MUST BE NEOPRENE OR GRAPHITE-FELT (WAX RING NOT RECOMMENDED).

SUGGESTED 1/16" CLEARANCE BETWEEN FACE OF WALL AND BACK OF BOWL. TO COMPLY WITH AREA CODE GOVERNING THE HEIGHT OF VACUUM BREAKER ON THE FLUSHOMETER VALVE, THE PLUMBER MUST VERIFY DIMENSIONS SHOWN FOR SUPPLY ROUGHING.

FLUSHOMETER VALVE NOT INCLUDED WITH FIXTURE AND MUST BE ORDERED SEPARATELY.

CARRIER FITTING AS REQUIRED TO BE FURNISHED BY OTHERS. PROVIDE SUITABLE REINFORCEMENT FOR ALL WALL SUPPORTS.

IMPORTANT: Dimensions of fixtures are nominal and may vary within the range of tolerances established by ANSI Standard A112.19.2. These measurements are subject to change or cancellation. No responsibility is assumed for use of superseded or voided pages.

COMMERCIAL TOILET SEATS

- Open front toilet seat less cover
- Injection molded solid polypropylene
- Fits elongated bowl
- Features large molded-in bumpers
- External check hinge with 304 Series stainless steel hinge posts stops seat 11° beyond vertical
- Our new EverClean® surface inhibits the growth of stain- and odor-causing bacteria, mold, and mildew on the surface. EverClean® surface does not protect against disease causing bacteria, viruses, germs or other disease causing organisms.

☐ **5901.100** Elongated Heavy Duty bowl open front seat less cover

☐ **5901.110** Same as 5901.100 with EverClean® Surface

☐ **5905.100** Elongated Extra Heavy Duty bowl open front seat less cover

☐ **5905.110** Same as 5905.100 with EverClean® Surface

To Be Specified:

☐ Color: ☐ White

☐ **5910.100** Elongated Extra Heavy Duty Plus bowl open front seat less cover

☐ **5910.110** Same as 5910.100 with EverClean® Surface

To Be Specified:

☐ Color: ☐ White ☐ Linen ☐ Bone ☐ Silver
☐ Fawn Beige ☐ Black

SEE REVERSE FOR ROUGHING-IN DIMENSIONS



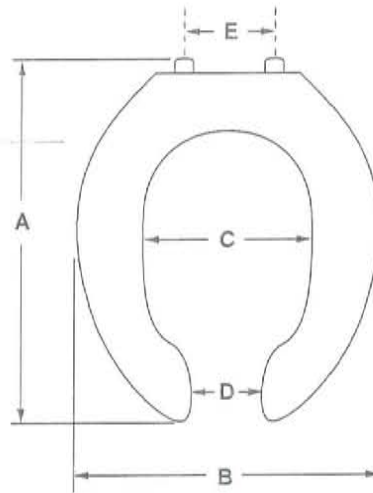
5901



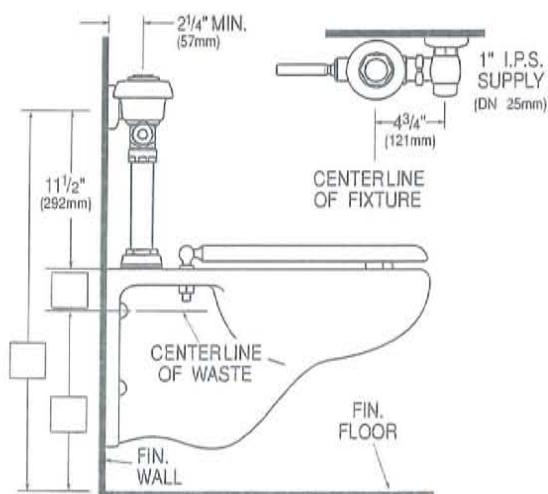
5905



5910



Model #	5901	5905	5910
A	18-9/16" (471mm)	18-9/16" (471mm)	18-3/16" (462mm)
B	14-3/8" (365mm)	14-3/16" (360mm)	14-3/16" (360mm)
C	7-7/8" (200mm)	7-5/8" (194mm)	7-7/8" (200mm)
D	3-1/2" (89mm)	3" (76mm)	3-1/2" (89mm)
E	5-1/2" (140mm)	5-1/2" (140mm)	5-1/2" (140mm)
Ring Thickness	7/8" (22mm)	1" (25mm)	1" (25mm)
Ring Thickness with Bumper	1" (25mm)	1-1/8" (29mm)	1-1/8" (29mm)



Royal® Model Flushometer

110/111

► Description

Exposed Water Closet Flushometer, for floor mounted or wall hung top spud bowls.

► Flush Cycle

- ☐ Model 111-1.6 Low Consumption (1.6 gpi/6.0 Lpf)
- ☐ Model 110 Water Saver (3.5 gpi/13.2 Lpf)

► Specifications

Quiet, Exposed, Diaphragm Type, Chrome Plated Closet Flushometer for left or right hand with the following features:

- PERMEX™ Synthetic Rubber Diaphragm with Dual Filtered Fixed Bypass
- ADA Compliant Metal Oscillating Non-Hold-Open Handle with Triple Seal Handle Packing
- 1" I.P.S. Screwdriver Bak-Chek® Angle Stop
- Free Spinning Vandal Resistant Stop Cap
- Adjustable Tailpiece
- High Back Pressure Vacuum Breaker Flush Connection with One-piece Bottom Hex Coupling Nut
- Spud Coupling and Flange for 1 1/2" Top Spud
- Sweat Solder Adapter with Cover Tube & Cast Wall Flange with Set Screw
- High Copper, Low Zinc Brass Castings for Dezincification Resistance
- Non-Hold-Open Handle, Fixed Metering Bypass and No External Volume Adjustment to Ensure Water Conservation
- Flush Accuracy Controlled by CID™ Technology
- Diaphragm, Handle Packing, Stop Seat and Vacuum Breaker molded from PERMEX™ Rubber Compound for Chloramine Resistance

Valve Body, Cover, Tailpiece and Control Stop shall be in conformance with ASTM Alloy Classification for Semi-Red Brass. Valve shall be in compliance to the applicable sections of ASSE 1037.

► Variations

- ☐ HL-3 3" Metal Oscillating Push Button on Front of Valve (does not meet ADA requirements)
- ☐ TP Trap Primer
- ☐ YG Extended Bumper on Angle Stop (for seat with cover)
- ☐ YO Bumper on Angle Stop (for open front seat without cover)
- ☐ SG SaniGuard® Antimicrobial Handle and Socket

► Accessories

See Accessories Section of the Sloan catalog for details on these and other Flushometer variations.

► Fixtures

Consult Sloan for Sloan brand matching fixture options.



Listed by I.A.P.M.O.



This space for Architect/Engineer approval

Job Name _____	Date _____
Model Specified _____	Quantity _____
Variations Specified _____	
Customer/Wholesaler _____	
Contractor _____	
Architect _____	

The information contained in this document is subject to change without notice.

SLOAN®

SLOAN VALVE COMPANY • 10500 SEYMOUR AVE. • FRANKLIN PARK, IL. 60131
Ph: 1-800-982-5839 or 1-847-671-4300 • Fax: 1-800-447-8329 or 1-847-671-4380
www.sloanvalve.com