

FLOOR PLAN NOTES

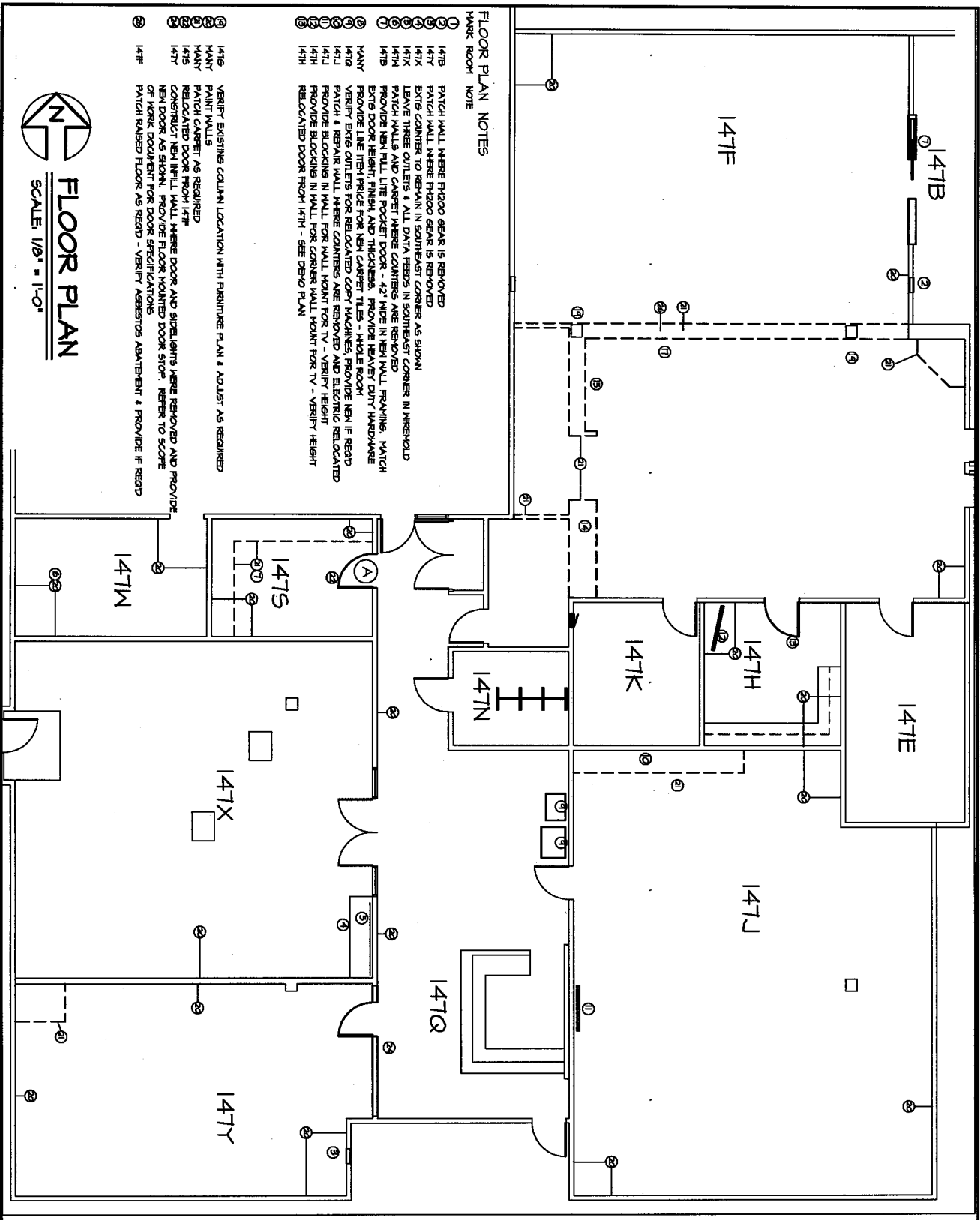
1. REMOVE COUNTER ALONG SOUTH WALL
2. REMOVE CLOSET & CHERICAL, BOTTLE
3. REMOVE FIBROD ALARM PANEL, APPARATIZE, AND POWER
4. REMOVE COUNTERTOP AT SOUTH WALL - LEAVE SECTIONS AT EAST WALL
5. REMOVE FIBROD ALARM PANEL - LEAVE THREE EXITS OUTLETS IN SOUTHEAST CORNER
6. REMOVE EXISTING COUNTERS / CABINETS
7. REMOVE EXISTING COUNTERS / CABINETS
8. REMOVE EXISTING COUNTERS / CABINETS
9. EXISTING COUNTERS TO BE RELOCATED
10. REMOVE EXISTING CABINETS AND COUNTERS, LOWER OUTLETS TO STANDARD HEIGHT
11. REMOVE EXISTING COUNTERS / CABINETS
12. REMOVE EXISTING COUNTERS / CABINETS
13. REMOVE EXISTING COUNTERS / CABINETS
14. REMOVE EXISTING COUNTERS / CABINETS
15. REMOVE EXISTING COUNTERS / CABINETS
16. REMOVE EXISTING COUNTERS / CABINETS
17. REMOVE EXISTING COUNTERS / CABINETS
18. REMOVE EXISTING COUNTERS / CABINETS
19. REMOVE EXISTING COUNTERS / CABINETS
20. REMOVE EXISTING COUNTERS / CABINETS
21. REMOVE EXISTING COUNTERS / CABINETS
22. REMOVE EXISTING COUNTERS / CABINETS
23. REMOVE EXISTING COUNTERS / CABINETS
24. REMOVE EXISTING COUNTERS / CABINETS
25. REMOVE EXISTING COUNTERS / CABINETS
26. REMOVE EXISTING COUNTERS / CABINETS
27. REMOVE EXISTING COUNTERS / CABINETS
28. REMOVE EXISTING COUNTERS / CABINETS
29. REMOVE EXISTING COUNTERS / CABINETS
30. REMOVE EXISTING COUNTERS / CABINETS
31. REMOVE EXISTING COUNTERS / CABINETS
32. REMOVE EXISTING COUNTERS / CABINETS
33. REMOVE EXISTING COUNTERS / CABINETS
34. REMOVE EXISTING COUNTERS / CABINETS
35. REMOVE EXISTING COUNTERS / CABINETS
36. REMOVE EXISTING COUNTERS / CABINETS
37. REMOVE EXISTING COUNTERS / CABINETS
38. REMOVE EXISTING COUNTERS / CABINETS
39. REMOVE EXISTING COUNTERS / CABINETS
40. REMOVE EXISTING COUNTERS / CABINETS
41. REMOVE EXISTING COUNTERS / CABINETS
42. REMOVE EXISTING COUNTERS / CABINETS
43. REMOVE EXISTING COUNTERS / CABINETS
44. REMOVE EXISTING COUNTERS / CABINETS
45. REMOVE EXISTING COUNTERS / CABINETS
46. REMOVE EXISTING COUNTERS / CABINETS
47. REMOVE EXISTING COUNTERS / CABINETS
48. REMOVE EXISTING COUNTERS / CABINETS
49. REMOVE EXISTING COUNTERS / CABINETS
50. REMOVE EXISTING COUNTERS / CABINETS
51. REMOVE EXISTING COUNTERS / CABINETS
52. REMOVE EXISTING COUNTERS / CABINETS
53. REMOVE EXISTING COUNTERS / CABINETS
54. REMOVE EXISTING COUNTERS / CABINETS
55. REMOVE EXISTING COUNTERS / CABINETS
56. REMOVE EXISTING COUNTERS / CABINETS
57. REMOVE EXISTING COUNTERS / CABINETS
58. REMOVE EXISTING COUNTERS / CABINETS
59. REMOVE EXISTING COUNTERS / CABINETS
60. REMOVE EXISTING COUNTERS / CABINETS
61. REMOVE EXISTING COUNTERS / CABINETS
62. REMOVE EXISTING COUNTERS / CABINETS
63. REMOVE EXISTING COUNTERS / CABINETS
64. REMOVE EXISTING COUNTERS / CABINETS
65. REMOVE EXISTING COUNTERS / CABINETS
66. REMOVE EXISTING COUNTERS / CABINETS
67. REMOVE EXISTING COUNTERS / CABINETS
68. REMOVE EXISTING COUNTERS / CABINETS
69. REMOVE EXISTING COUNTERS / CABINETS
70. REMOVE EXISTING COUNTERS / CABINETS
71. REMOVE EXISTING COUNTERS / CABINETS
72. REMOVE EXISTING COUNTERS / CABINETS
73. REMOVE EXISTING COUNTERS / CABINETS
74. REMOVE EXISTING COUNTERS / CABINETS
75. REMOVE EXISTING COUNTERS / CABINETS
76. REMOVE EXISTING COUNTERS / CABINETS
77. REMOVE EXISTING COUNTERS / CABINETS
78. REMOVE EXISTING COUNTERS / CABINETS
79. REMOVE EXISTING COUNTERS / CABINETS
80. REMOVE EXISTING COUNTERS / CABINETS
81. REMOVE EXISTING COUNTERS / CABINETS
82. REMOVE EXISTING COUNTERS / CABINETS
83. REMOVE EXISTING COUNTERS / CABINETS
84. REMOVE EXISTING COUNTERS / CABINETS
85. REMOVE EXISTING COUNTERS / CABINETS
86. REMOVE EXISTING COUNTERS / CABINETS
87. REMOVE EXISTING COUNTERS / CABINETS
88. REMOVE EXISTING COUNTERS / CABINETS
89. REMOVE EXISTING COUNTERS / CABINETS
90. REMOVE EXISTING COUNTERS / CABINETS
91. REMOVE EXISTING COUNTERS / CABINETS
92. REMOVE EXISTING COUNTERS / CABINETS
93. REMOVE EXISTING COUNTERS / CABINETS
94. REMOVE EXISTING COUNTERS / CABINETS
95. REMOVE EXISTING COUNTERS / CABINETS
96. REMOVE EXISTING COUNTERS / CABINETS
97. REMOVE EXISTING COUNTERS / CABINETS
98. REMOVE EXISTING COUNTERS / CABINETS
99. REMOVE EXISTING COUNTERS / CABINETS
100. REMOVE EXISTING COUNTERS / CABINETS



DEMOLITION PLAN

SCALE: 1/8" = 1'-0"

L.B. HERBST & ASSOCIATES, INC. ARCHITECTS & ENGINEERS 944 COUNTRYSIDE LANE CAROL STREAM, ILL. 60106 (630) 294-5142 (630) 344-0916 fax		NEOC RENOVATIONS HINES VA BUILDING 215	
DRAWING TITLE FLOOR PLAN		NO. 1 DATE 1/26/13	
SCALE NOTED JOB NO. 13011		4. CLARIFICATIONS 9/24/13 3. CLARIFICATIONS 2/27/13 2. NOTE 24 ADDED 1/24/13 1. FIRST CONCEPT 1/26/13	
DRAWN LHM SHEET NUMBER A-1 CHECKED LHM OF SHEETS		1. FIRST CONCEPT 1/26/13 2. NOTE 24 ADDED 1/24/13 3. CLARIFICATIONS 2/27/13 4. CLARIFICATIONS 9/24/13	



FLOOR PLAN NOTES

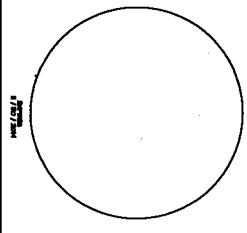
1. PATCH WALL WHERE PIZOO GEAR IS REMOVED
2. PATCH WALL WHERE PIZOO GEAR IS REMOVED
3. PATCH WALL WHERE PIZOO GEAR IS REMOVED
4. PATCH WALL WHERE PIZOO GEAR IS REMOVED
5. PATCH WALL WHERE PIZOO GEAR IS REMOVED
6. PATCH WALL WHERE PIZOO GEAR IS REMOVED
7. PATCH WALL WHERE PIZOO GEAR IS REMOVED
8. PATCH WALL WHERE PIZOO GEAR IS REMOVED
9. PATCH WALL WHERE PIZOO GEAR IS REMOVED
10. PATCH WALL WHERE PIZOO GEAR IS REMOVED
11. PATCH WALL WHERE PIZOO GEAR IS REMOVED
12. PATCH WALL WHERE PIZOO GEAR IS REMOVED
13. PATCH WALL WHERE PIZOO GEAR IS REMOVED
14. PATCH WALL WHERE PIZOO GEAR IS REMOVED
15. PATCH WALL WHERE PIZOO GEAR IS REMOVED
16. PATCH WALL WHERE PIZOO GEAR IS REMOVED
17. PATCH WALL WHERE PIZOO GEAR IS REMOVED
18. PATCH WALL WHERE PIZOO GEAR IS REMOVED
19. PATCH WALL WHERE PIZOO GEAR IS REMOVED
20. PATCH WALL WHERE PIZOO GEAR IS REMOVED
21. PATCH WALL WHERE PIZOO GEAR IS REMOVED
22. PATCH WALL WHERE PIZOO GEAR IS REMOVED
23. PATCH WALL WHERE PIZOO GEAR IS REMOVED
24. PATCH WALL WHERE PIZOO GEAR IS REMOVED
25. PATCH WALL WHERE PIZOO GEAR IS REMOVED
26. PATCH WALL WHERE PIZOO GEAR IS REMOVED
27. PATCH WALL WHERE PIZOO GEAR IS REMOVED
28. PATCH WALL WHERE PIZOO GEAR IS REMOVED
29. PATCH WALL WHERE PIZOO GEAR IS REMOVED
30. PATCH WALL WHERE PIZOO GEAR IS REMOVED
31. PATCH WALL WHERE PIZOO GEAR IS REMOVED
32. PATCH WALL WHERE PIZOO GEAR IS REMOVED
33. PATCH WALL WHERE PIZOO GEAR IS REMOVED
34. PATCH WALL WHERE PIZOO GEAR IS REMOVED
35. PATCH WALL WHERE PIZOO GEAR IS REMOVED
36. PATCH WALL WHERE PIZOO GEAR IS REMOVED
37. PATCH WALL WHERE PIZOO GEAR IS REMOVED
38. PATCH WALL WHERE PIZOO GEAR IS REMOVED
39. PATCH WALL WHERE PIZOO GEAR IS REMOVED
40. PATCH WALL WHERE PIZOO GEAR IS REMOVED
41. PATCH WALL WHERE PIZOO GEAR IS REMOVED
42. PATCH WALL WHERE PIZOO GEAR IS REMOVED
43. PATCH WALL WHERE PIZOO GEAR IS REMOVED
44. PATCH WALL WHERE PIZOO GEAR IS REMOVED
45. PATCH WALL WHERE PIZOO GEAR IS REMOVED
46. PATCH WALL WHERE PIZOO GEAR IS REMOVED
47. PATCH WALL WHERE PIZOO GEAR IS REMOVED
48. PATCH WALL WHERE PIZOO GEAR IS REMOVED
49. PATCH WALL WHERE PIZOO GEAR IS REMOVED
50. PATCH WALL WHERE PIZOO GEAR IS REMOVED
51. PATCH WALL WHERE PIZOO GEAR IS REMOVED
52. PATCH WALL WHERE PIZOO GEAR IS REMOVED
53. PATCH WALL WHERE PIZOO GEAR IS REMOVED
54. PATCH WALL WHERE PIZOO GEAR IS REMOVED
55. PATCH WALL WHERE PIZOO GEAR IS REMOVED
56. PATCH WALL WHERE PIZOO GEAR IS REMOVED
57. PATCH WALL WHERE PIZOO GEAR IS REMOVED
58. PATCH WALL WHERE PIZOO GEAR IS REMOVED
59. PATCH WALL WHERE PIZOO GEAR IS REMOVED
60. PATCH WALL WHERE PIZOO GEAR IS REMOVED
61. PATCH WALL WHERE PIZOO GEAR IS REMOVED
62. PATCH WALL WHERE PIZOO GEAR IS REMOVED
63. PATCH WALL WHERE PIZOO GEAR IS REMOVED
64. PATCH WALL WHERE PIZOO GEAR IS REMOVED
65. PATCH WALL WHERE PIZOO GEAR IS REMOVED
66. PATCH WALL WHERE PIZOO GEAR IS REMOVED
67. PATCH WALL WHERE PIZOO GEAR IS REMOVED
68. PATCH WALL WHERE PIZOO GEAR IS REMOVED
69. PATCH WALL WHERE PIZOO GEAR IS REMOVED
70. PATCH WALL WHERE PIZOO GEAR IS REMOVED
71. PATCH WALL WHERE PIZOO GEAR IS REMOVED
72. PATCH WALL WHERE PIZOO GEAR IS REMOVED
73. PATCH WALL WHERE PIZOO GEAR IS REMOVED
74. PATCH WALL WHERE PIZOO GEAR IS REMOVED
75. PATCH WALL WHERE PIZOO GEAR IS REMOVED
76. PATCH WALL WHERE PIZOO GEAR IS REMOVED
77. PATCH WALL WHERE PIZOO GEAR IS REMOVED
78. PATCH WALL WHERE PIZOO GEAR IS REMOVED
79. PATCH WALL WHERE PIZOO GEAR IS REMOVED
80. PATCH WALL WHERE PIZOO GEAR IS REMOVED
81. PATCH WALL WHERE PIZOO GEAR IS REMOVED
82. PATCH WALL WHERE PIZOO GEAR IS REMOVED
83. PATCH WALL WHERE PIZOO GEAR IS REMOVED
84. PATCH WALL WHERE PIZOO GEAR IS REMOVED
85. PATCH WALL WHERE PIZOO GEAR IS REMOVED
86. PATCH WALL WHERE PIZOO GEAR IS REMOVED
87. PATCH WALL WHERE PIZOO GEAR IS REMOVED
88. PATCH WALL WHERE PIZOO GEAR IS REMOVED
89. PATCH WALL WHERE PIZOO GEAR IS REMOVED
90. PATCH WALL WHERE PIZOO GEAR IS REMOVED
91. PATCH WALL WHERE PIZOO GEAR IS REMOVED
92. PATCH WALL WHERE PIZOO GEAR IS REMOVED
93. PATCH WALL WHERE PIZOO GEAR IS REMOVED
94. PATCH WALL WHERE PIZOO GEAR IS REMOVED
95. PATCH WALL WHERE PIZOO GEAR IS REMOVED
96. PATCH WALL WHERE PIZOO GEAR IS REMOVED
97. PATCH WALL WHERE PIZOO GEAR IS REMOVED
98. PATCH WALL WHERE PIZOO GEAR IS REMOVED
99. PATCH WALL WHERE PIZOO GEAR IS REMOVED
100. PATCH WALL WHERE PIZOO GEAR IS REMOVED



FLOOR PLAN

SCALE: 1/8" = 1'-0"

L.B. HERBST & ASSOCIATES, INC.
 ARCHITECTS + ENGINEERS
 944 COUNTRYSIDE LANE
 CAROL STREAM, IL 60186
 (630) 294-5142
 (630) 344-0416 fax



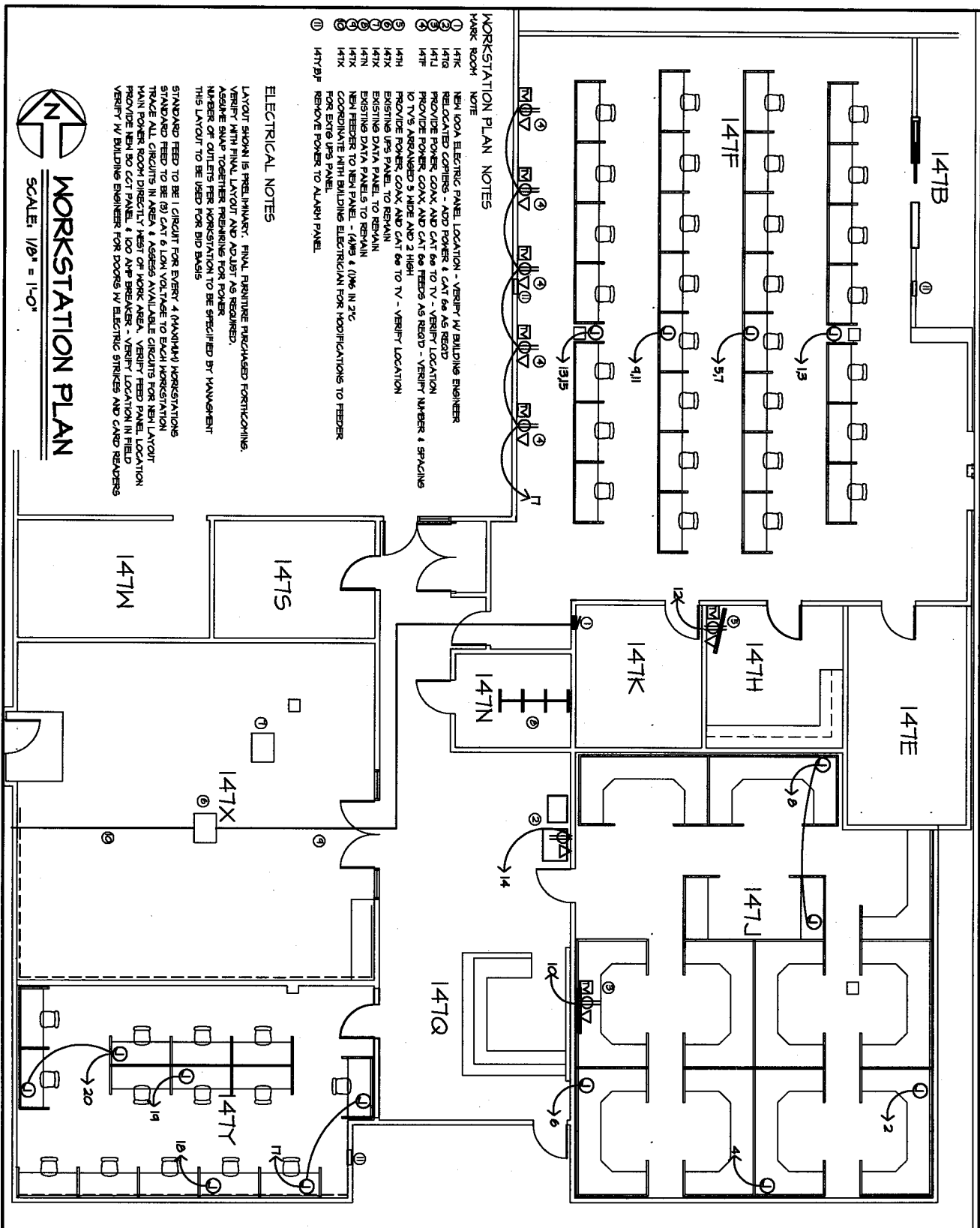
NOTES
 1. ALL WORK TO BE DONE IN ACCORDANCE WITH THE SPECIFICATIONS AND CONDITIONS OF THE CONTRACT.
 2. ALL MATERIALS AND METHODS OF CONSTRUCTION SHALL BE APPROVED BY THE ARCHITECT PRIOR TO INSTALLATION.
 3. THE CONTRACTOR SHALL BE RESPONSIBLE FOR OBTAINING ALL NECESSARY PERMITS AND APPROVALS FROM THE APPROPRIATE AGENCIES.
 4. THE CONTRACTOR SHALL MAINTAIN ACCESS TO ALL ADJACENT PROPERTIES AT ALL TIMES.
 5. THE CONTRACTOR SHALL BE RESPONSIBLE FOR PROTECTING ALL EXISTING UTILITIES AND STRUCTURES.
 6. THE CONTRACTOR SHALL MAINTAIN A SAFE WORKING ENVIRONMENT AT ALL TIMES.
 7. THE CONTRACTOR SHALL BE RESPONSIBLE FOR REMOVING ALL DEBRIS AND WASTE FROM THE SITE.
 8. THE CONTRACTOR SHALL BE RESPONSIBLE FOR RESTORING THE SITE TO ITS ORIGINAL CONDITION.
 9. THE CONTRACTOR SHALL BE RESPONSIBLE FOR OBTAINING ALL NECESSARY INSURANCE COVERAGE.
 10. THE CONTRACTOR SHALL BE RESPONSIBLE FOR PAYING ALL TAXES AND FEES ASSOCIATED WITH THE PROJECT.

REVISIONS
 NO. 1
 DATE 1/26/78
 DESCRIPTION FIRST CONCEPT

NO.	DESCRIPTION	DATE
1	REVISION	1/26/78
2	REVISION	1/26/78
3	REVISION	1/26/78
4	REVISION	1/26/78

PROJECT INFORMATION
 PROJECT NO. 1500
 PROJECT NAME 1500
 PROJECT ADDRESS 1500

DRAWING TITLE			
FLOOR PLAN			
SCALE	NOTED		
PLOT/FILE		JOB NO.	13011
DRAWN	LHHH	SHEET NUMBER	A-2
CHECKED	LHHH	OF	SHEETS



L.B. HERBERT & ASSOCIATES, INC.
ARCHITECTS + ENGINEERS
944 COUNTRYSIDE LANE
CAROL STREAM, IL 60188
(630) 284-5742
(630) 844-0916 fax

NO. 2000
BUILDING
215

NO. 2000
BUILDING
215

NO. 2000
BUILDING
215

NO. 2000
BUILDING
215

NO. 2000
BUILDING
215

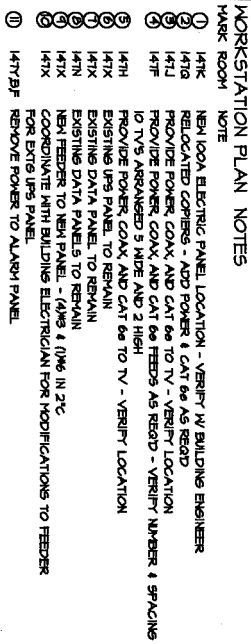
NO. 2000
BUILDING
215

NO. 2000
BUILDING
215

NO. 2000
BUILDING
215

NO. 2000
BUILDING
215

NO. 2000
BUILDING
215



LAYOUT SHOWN IS PRELIMINARY. FINAL PLUMBING PURCHASED FORTIFICATION. VERIFY WITH FINAL LAYOUT AND ADJUST AS REQUIRED. ASSESS SNAP TOGETHER REMAINING FOR POWER. NUMBER OF OUTLETS PER WORKSTATION TO BE SPECIFIED BY MANAGEMENT THIS LAYOUT TO BE USED FOR BID BASIS

STANDARD FEED TO BE 1 CIRCUIT FOR EVERY 4 (MAXIMUM) WORKSTATIONS STANDARD FEED TO BE 3/4" 120V 15A TO EACH WORKSTATION MAKE ALL CIRCUITS IN AREA A, ASSETS AVAILABLE CIRCUITS FOR NEW LAYOUT MAIN POWER ROOM DIRECTLY WEST OF WORK AREA. VERIFY FEED PANEL LOCATION FROM NEW BUILDING ENGINEER FOR DOORS IN ELECTRIC STRIKES AND CARD READERS



L.B. HERBST & ASSOCIATES, INC.
ARCHITECTS + ENGINEERS
 944 COUNTRYSIDE LANE
 CAROL STREAM, IL. 60186
 (630) 294-5142
 (630) 344-0816 fax

1. THIS DRAWING IS THE PROPERTY OF L.B. HERBST & ASSOCIATES, INC. AND IS NOT TO BE REPRODUCED OR TRANSMITTED IN ANY FORM OR BY ANY MEANS, ELECTRONIC OR MECHANICAL, INCLUDING PHOTOCOPYING, RECORDING, OR BY ANY INFORMATION STORAGE AND RETRIEVAL SYSTEM, WITHOUT THE WRITTEN PERMISSION OF L.B. HERBST & ASSOCIATES, INC.

2. NO PART OF THIS DRAWING IS TO BE REPRODUCED OR TRANSMITTED IN ANY FORM OR BY ANY MEANS, ELECTRONIC OR MECHANICAL, INCLUDING PHOTOCOPYING, RECORDING, OR BY ANY INFORMATION STORAGE AND RETRIEVAL SYSTEM, WITHOUT THE WRITTEN PERMISSION OF L.B. HERBST & ASSOCIATES, INC.

3. THIS DRAWING IS THE PROPERTY OF L.B. HERBST & ASSOCIATES, INC. AND IS NOT TO BE REPRODUCED OR TRANSMITTED IN ANY FORM OR BY ANY MEANS, ELECTRONIC OR MECHANICAL, INCLUDING PHOTOCOPYING, RECORDING, OR BY ANY INFORMATION STORAGE AND RETRIEVAL SYSTEM, WITHOUT THE WRITTEN PERMISSION OF L.B. HERBST & ASSOCIATES, INC.

NO.	REVISION	DATE
1	FIRST CONCEPT	1/26/15
2	ADDED (2) CUBES, NOTE B	1/26/15
3	CLARIFICATIONS	2/27/15
4	CLARIFICATIONS	3/24/15

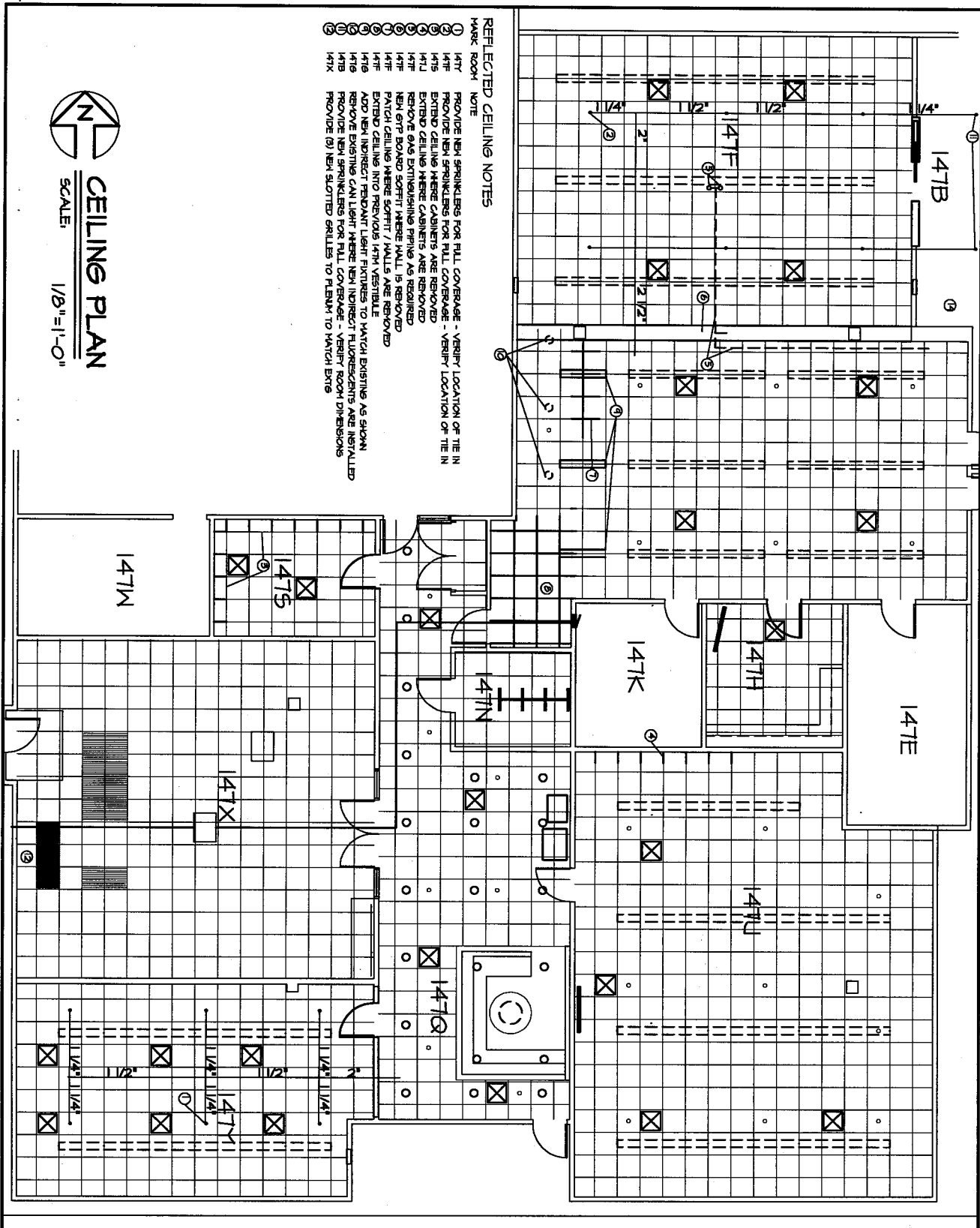
PROJECT TITLE
FLOOR PLAN

SCALE **NOTED**

PROJECT NO. **15011**

CHECKED **LHII** **SHEET NUMBER** **A-3**

OF **25** **SHEETS**



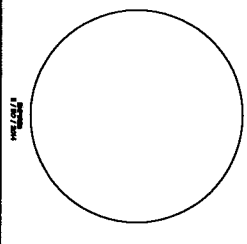
REFLECTED CEILING NOTES

- 1. PROVIDE NEW SPRINKLERS FOR FULL COVERAGE - VERIFY LOCATION OF THE IN
- 2. PROVIDE NEW SPRINKLERS FOR FULL COVERAGE - VERIFY LOCATION OF THE IN
- 3. EXTEND CEILING WHERE CABINETS ARE REMOVED
- 4. REMOVE GAS EXHAUSTING PIPING AS REQUIRED
- 5. NEW GRT BOARD SCOTTI WHERE WALL IS REMOVED
- 6. MATCH CEILING WHERE SCOTTI WALLS ARE REMOVED
- 7. EXTEND CEILING INTO PREVIOUS WITH VENTILATE
- 8. ADJUST EXISTING LIGHT FIXTURES TO MATCH EXISTING AS SHOWN
- 9. REMOVE EXISTING LIGHT FIXTURES AND REINSTALL FLUORESCENTS ARE INSTALLED
- 10. PROVIDE NEW SPRINKLERS FOR FULL COVERAGE - VERIFY LOCATION OF THE IN
- 11. PROVIDE NEW SPRINKLERS FOR FULL COVERAGE - VERIFY LOCATION OF THE IN
- 12. PROVIDE NEW SPRINKLERS FOR FULL COVERAGE - VERIFY LOCATION OF THE IN
- 13. PROVIDE NEW SPRINKLERS FOR FULL COVERAGE - VERIFY LOCATION OF THE IN
- 14. PROVIDE NEW SPRINKLERS FOR FULL COVERAGE - VERIFY LOCATION OF THE IN
- 15. PROVIDE NEW SPRINKLERS FOR FULL COVERAGE - VERIFY LOCATION OF THE IN
- 16. PROVIDE NEW SPRINKLERS FOR FULL COVERAGE - VERIFY LOCATION OF THE IN
- 17. PROVIDE NEW SPRINKLERS FOR FULL COVERAGE - VERIFY LOCATION OF THE IN
- 18. PROVIDE NEW SPRINKLERS FOR FULL COVERAGE - VERIFY LOCATION OF THE IN
- 19. PROVIDE NEW SPRINKLERS FOR FULL COVERAGE - VERIFY LOCATION OF THE IN
- 20. PROVIDE NEW SPRINKLERS FOR FULL COVERAGE - VERIFY LOCATION OF THE IN



CEILING PLAN
SCALE: 1/8" = 1'-0"

L.B. HERBST & ASSOCIATES, INC.
ARCHITECTS + ENGINEERS
944 COUNTRYSIDE LANE
CAROL STREAM, IL 60108
(800) 284-5142
(800) 344-0818 fax

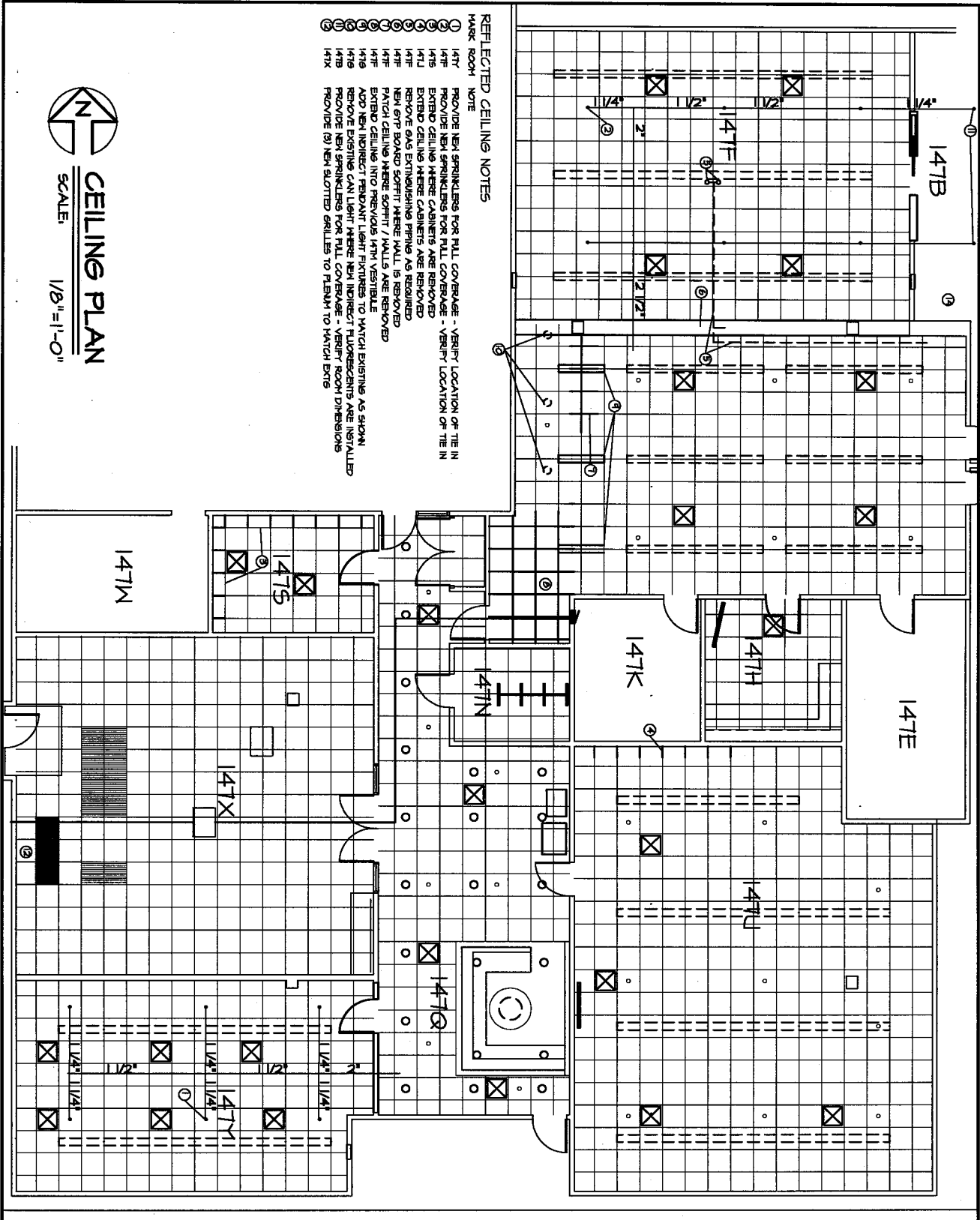


NOTED TO BE REMOVED
ALL EXISTING SPRINKLERS AND PIPING TO BE REMOVED AND NEW SPRINKLERS AND PIPING TO BE INSTALLED AS SHOWN ON THIS PLAN.
ALL EXISTING SPRINKLERS AND PIPING TO BE REMOVED AND NEW SPRINKLERS AND PIPING TO BE INSTALLED AS SHOWN ON THIS PLAN.
ALL EXISTING SPRINKLERS AND PIPING TO BE REMOVED AND NEW SPRINKLERS AND PIPING TO BE INSTALLED AS SHOWN ON THIS PLAN.

3	CLARIFICATIONS	5/24/15
2	CLARIFICATIONS	2/27/15
1	FIRST CONCEPT	1/26/15
NO.	ISSUE	DATE

NBOC RENOVATIONS
HINES VA
BUILDING
215

DRAWING TITLE CEILING PLAN	
SCALE NOTED	JOB NO. 15011
PLOT FILE	SHEET NUMBER A-4
DRAWN LHII	CHECKED LHII
OF SHEETS	



- REFLECTED CEILING NOTES**
- MARK ROOM NOTE
- 147 PROVIDE NEW SPRINKLERS FOR FULL COVERAGE - VERIFY LOCATION OF TIE IN
 - 147 PROVIDE NEW SPRINKLERS FOR FULL COVERAGE - VERIFY LOCATION OF TIE IN
 - 147 EXTEND CEILING WHERE CABINETS ARE REMOVED
 - 147 EXTEND CEILING WHERE CABINETS ARE REMOVED
 - 147 REMOVE GAS EXHAUSTING PIPING AS REQUIRED
 - 147 NEW GYP BOARD SOFFIT WHERE WALL IS REMOVED
 - 147 PATCH CEILING WHERE SOFFIT / WALLS ARE REMOVED
 - 147 EXTEND CEILING INTO PREVIOUS 147H VESTIBULE TO MATCH EXISTING AS SHOWN
 - 147 ADD NEW INDIRECT PENDANT LIGHT FIXTURES TO MATCH EXISTING AS SHOWN
 - 147 REMOVE EXISTING CAN LIGHT WHERE NEW INDIRECT FLUORESCENTS ARE INSTALLED
 - 147B PROVIDE NEW SPRINKLERS FOR FULL COVERAGE - VERIFY ROOM DIMENSIONS
 - 147B PROVIDE (5) NEW SLOTTED GRILLES TO FLESHUP TO MATCH EXITS
 - 147C
 - 147D
 - 147E
 - 147F
 - 147G
 - 147H
 - 147I
 - 147J
 - 147K
 - 147L
 - 147M
 - 147N
 - 147O
 - 147P
 - 147Q
 - 147R
 - 147S
 - 147T
 - 147U
 - 147V
 - 147W
 - 147X
 - 147Y
 - 147Z
 - 147AA
 - 147AB
 - 147AC
 - 147AD
 - 147AE
 - 147AF
 - 147AG
 - 147AH
 - 147AI
 - 147AJ
 - 147AK
 - 147AL
 - 147AM
 - 147AN
 - 147AO
 - 147AP
 - 147AQ
 - 147AR
 - 147AS
 - 147AT
 - 147AU
 - 147AV
 - 147AW
 - 147AX
 - 147AY
 - 147AZ
 - 147BA
 - 147BB
 - 147BC
 - 147BD
 - 147BE
 - 147BF
 - 147BG
 - 147BH
 - 147BI
 - 147BJ
 - 147BK
 - 147BL
 - 147BM
 - 147BN
 - 147BO
 - 147BP
 - 147BQ
 - 147BR
 - 147BS
 - 147BT
 - 147BU
 - 147BV
 - 147BW
 - 147BX
 - 147BY
 - 147BZ
 - 147CA
 - 147CB
 - 147CC
 - 147CD
 - 147CE
 - 147CF
 - 147CG
 - 147CH
 - 147CI
 - 147CJ
 - 147CK
 - 147CL
 - 147CM
 - 147CN
 - 147CO
 - 147CP
 - 147CQ
 - 147CR
 - 147CS
 - 147CT
 - 147CU
 - 147CV
 - 147CW
 - 147CX
 - 147CY
 - 147CZ
 - 147DA
 - 147DB
 - 147DC
 - 147DD
 - 147DE
 - 147DF
 - 147DG
 - 147DH
 - 147DI
 - 147DJ
 - 147DK
 - 147DL
 - 147DM
 - 147DN
 - 147DO
 - 147DP
 - 147DQ
 - 147DR
 - 147DS
 - 147DT
 - 147DU
 - 147DV
 - 147DW
 - 147DX
 - 147DY
 - 147DZ
 - 147EA
 - 147EB
 - 147EC
 - 147ED
 - 147EE
 - 147EF
 - 147EG
 - 147EH
 - 147EI
 - 147EJ
 - 147EK
 - 147EL
 - 147EM
 - 147EN
 - 147EO
 - 147EP
 - 147EQ
 - 147ER
 - 147ES
 - 147ET
 - 147EU
 - 147EV
 - 147EW
 - 147EX
 - 147EY
 - 147EZ
 - 147FA
 - 147FB
 - 147FC
 - 147FD
 - 147FE
 - 147FF
 - 147FG
 - 147FH
 - 147FI
 - 147FJ
 - 147FK
 - 147FL
 - 147FM
 - 147FN
 - 147FO
 - 147FP
 - 147FQ
 - 147FR
 - 147FS
 - 147FT
 - 147FU
 - 147FV
 - 147FW
 - 147FX
 - 147FY
 - 147FZ
 - 147GA
 - 147GB
 - 147GC
 - 147GD
 - 147GE
 - 147GF
 - 147GG
 - 147GH
 - 147GI
 - 147GJ
 - 147GK
 - 147GL
 - 147GM
 - 147GN
 - 147GO
 - 147GP
 - 147GQ
 - 147GR
 - 147GS
 - 147GT
 - 147GU
 - 147GV
 - 147GW
 - 147GX
 - 147GY
 - 147GZ
 - 147HA
 - 147HB
 - 147HC
 - 147HD
 - 147HE
 - 147HF
 - 147HG
 - 147HI
 - 147HJ
 - 147HK
 - 147HL
 - 147HM
 - 147HN
 - 147HO
 - 147HP
 - 147HQ
 - 147HR
 - 147HS
 - 147HT
 - 147HU
 - 147HV
 - 147HW
 - 147HX
 - 147HY
 - 147HZ
 - 147IA
 - 147IB
 - 147IC
 - 147ID
 - 147IE
 - 147IF
 - 147IG
 - 147IH
 - 147II
 - 147IJ
 - 147IK
 - 147IL
 - 147IM
 - 147IN
 - 147IO
 - 147IP
 - 147IQ
 - 147IR
 - 147IS
 - 147IT
 - 147IU
 - 147IV
 - 147IW
 - 147IX
 - 147IY
 - 147IZ
 - 147JA
 - 147JB
 - 147JC
 - 147JD
 - 147JE
 - 147JF
 - 147JG
 - 147JH
 - 147JI
 - 147JJ
 - 147JK
 - 147JL
 - 147JM
 - 147JN
 - 147JO
 - 147JP
 - 147JQ
 - 147JR
 - 147JS
 - 147JT
 - 147JU
 - 147JV
 - 147JW
 - 147JX
 - 147JY
 - 147JZ
 - 147KA
 - 147KB
 - 147KC
 - 147KD
 - 147KE
 - 147KF
 - 147KG
 - 147KH
 - 147KI
 - 147KJ
 - 147KL
 - 147KM
 - 147KN
 - 147KO
 - 147KP
 - 147KQ
 - 147KR
 - 147KS
 - 147KT
 - 147KU
 - 147KV
 - 147KW
 - 147KX
 - 147KY
 - 147KZ
 - 147LA
 - 147LB
 - 147LC
 - 147LD
 - 147LE
 - 147LF
 - 147LG
 - 147LH
 - 147LI
 - 147LJ
 - 147LK
 - 147LL
 - 147LM
 - 147LN
 - 147LO
 - 147LP
 - 147LQ
 - 147LR
 - 147LS
 - 147LT
 - 147LU
 - 147LV
 - 147LW
 - 147LX
 - 147LY
 - 147LZ
 - 147MA
 - 147MB
 - 147MC
 - 147MD
 - 147ME
 - 147MF
 - 147MG
 - 147MH
 - 147MI
 - 147MJ
 - 147MK
 - 147ML
 - 147MM
 - 147MN
 - 147MO
 - 147MP
 - 147MQ
 - 147MR
 - 147MS
 - 147MT
 - 147MU
 - 147MV
 - 147MW
 - 147MX
 - 147MY
 - 147MZ
 - 147NA
 - 147NB
 - 147NC
 - 147ND
 - 147NE
 - 147NF
 - 147NG
 - 147NH
 - 147NI
 - 147NJ
 - 147NK
 - 147NL
 - 147NM
 - 147NN
 - 147NO
 - 147NP
 - 147NQ
 - 147NR
 - 147NS
 - 147NT
 - 147NU
 - 147NV
 - 147NW
 - 147NX
 - 147NY
 - 147NZ
 - 147OA
 - 147OB
 - 147OC
 - 147OD
 - 147OE
 - 147OF
 - 147OG
 - 147OH
 - 147OI
 - 147OJ
 - 147OK
 - 147OL
 - 147OM
 - 147ON
 - 147OO
 - 147OP
 - 147OQ
 - 147OR
 - 147OS
 - 147OT
 - 147OU
 - 147OV
 - 147OW
 - 147OX
 - 147OY
 - 147OZ
 - 147PA
 - 147PB
 - 147PC
 - 147PD
 - 147PE
 - 147PF
 - 147PG
 - 147PH
 - 147PI
 - 147PJ
 - 147PK
 - 147PL
 - 147PM
 - 147PN
 - 147PO
 - 147PP
 - 147PQ
 - 147PR
 - 147PS
 - 147PT
 - 147PU
 - 147PV
 - 147PW
 - 147PX
 - 147PY
 - 147PZ
 - 147QA
 - 147QB
 - 147QC
 - 147QD
 - 147QE
 - 147QF
 - 147QG
 - 147QH
 - 147QI
 - 147QJ
 - 147QK
 - 147QL
 - 147QM
 - 147QN
 - 147QO
 - 147QP
 - 147QQ
 - 147QR
 - 147QS
 - 147QT
 - 147QU
 - 147QV
 - 147QW
 - 147QX
 - 147QY
 - 147QZ
 - 147RA
 - 147RB
 - 147RC
 - 147RD
 - 147RE
 - 147RF
 - 147RG
 - 147RH
 - 147RI
 - 147RJ
 - 147RK
 - 147RL
 - 147RM
 - 147RN
 - 147RO
 - 147RP
 - 147RQ
 - 147RR
 - 147RS
 - 147RT
 - 147RU
 - 147RV
 - 147RW
 - 147RX
 - 147RY
 - 147RZ
 - 147SA
 - 147SB
 - 147SC
 - 147SD
 - 147SE
 - 147SF
 - 147SG
 - 147SH
 - 147SI
 - 147SJ
 - 147SK
 - 147SL
 - 147SM
 - 147SN
 - 147SO
 - 147SP
 - 147SQ
 - 147SR
 - 147SS
 - 147ST
 - 147SU
 - 147SV
 - 147SW
 - 147SX
 - 147SY
 - 147SZ
 - 147TA
 - 147TB
 - 147TC
 - 147TD
 - 147TE
 - 147TF
 - 147TG
 - 147TH
 - 147TI
 - 147TJ
 - 147TK
 - 147TL
 - 147TM
 - 147TN
 - 147TO
 - 147TP
 - 147TQ
 - 147TR
 - 147TS
 - 147TT
 - 147TU
 - 147TV
 - 147TW
 - 147TX
 - 147TY
 - 147TZ
 - 147UA
 - 147UB
 - 147UC
 - 147UD
 - 147UE
 - 147UF
 - 147UG
 - 147UH
 - 147UI
 - 147UJ
 - 147UK
 - 147UL
 - 147UM
 - 147UN
 - 147UO
 - 147UP
 - 147UQ
 - 147UR
 - 147US
 - 147UT
 - 147UU
 - 147UV
 - 147UW
 - 147UX
 - 147UY
 - 147UZ
 - 147VA
 - 147VB
 - 147VC
 - 147VD
 - 147VE
 - 147VF
 - 147VG
 - 147VH
 - 147VI
 - 147VJ
 - 147VK
 - 147VL
 - 147VM
 - 147VN
 - 147VO
 - 147VP
 - 147VQ
 - 147VR
 - 147VS
 - 147VT
 - 147VU
 - 147VV
 - 147VW
 - 147VX
 - 147VY
 - 147VZ
 - 147WA
 - 147WB
 - 147WC
 - 147WD
 - 147WE
 - 147WF
 - 147WG
 - 147WH
 - 147WI
 - 147WJ
 - 147WK
 - 147WL
 - 147WM
 - 147WN
 - 147WO
 - 147WP
 - 147WQ
 - 147WR
 - 147WS
 - 147WT
 - 147WU
 - 147WV
 - 147WW
 - 147WX
 - 147WY
 - 147WZ
 - 147XA
 - 147XB
 - 147XC
 - 147XD
 - 147XE
 - 147XF
 - 147XG
 - 147XH
 - 147XI
 - 147XJ
 - 147XK
 - 147XL
 - 147XM
 - 147XN
 - 147XO
 - 147XP
 - 147XQ
 - 147XR
 - 147XS
 - 147XT
 - 147XU
 - 147XV
 - 147XW
 - 147XX
 - 147XY
 - 147XZ
 - 147YA
 - 147YB
 - 147YC
 - 147YD
 - 147YE
 - 147YF
 - 147YG
 - 147YH
 - 147YI
 - 147YJ
 - 147YK
 - 147YL
 - 147YM
 - 147YN
 - 147YO
 - 147YP
 - 147YQ
 - 147YR
 - 147YS
 - 147YT
 - 147YU
 - 147YV
 - 147YW
 - 147YX
 - 147YY
 - 147YZ
 - 147ZA
 - 147ZB
 - 147ZC
 - 147ZD
 - 147ZE
 - 147ZF
 - 147ZG
 - 147ZH
 - 147ZI
 - 147ZJ
 - 147ZK
 - 147ZL
 - 147ZM
 - 147ZN
 - 147ZO
 - 147ZP
 - 147ZQ
 - 147ZR
 - 147ZS
 - 147ZT
 - 147ZU
 - 147ZV
 - 147ZW
 - 147ZX
 - 147ZY
 - 147ZZ

CEILING PLAN
SCALE: 1/8"=1'-0"

L.B. HERBST & INC.
ARCHITECTS + ENGINEERS
944 COUNTRYSIDE LANE
CAROL STREAM, ILL. 60106
(800) 284 - 5742
(630) 544 - 0416 fax

NEOC REMODELING
HINES VA
BUILDING 215

DRAWING TITLE
CEILING PLAN

SCALE NOTED

PLOT FILE JOB NO. 19011

DRAWN LHLI SHEET NUMBER

CHECKED LHLI **A-4**

OF SHEETS

NO. **CLARIFICATIONS** **DATE**

1	CLARIFICATIONS	9/24/13
2	CLARIFICATIONS</	

NSOC REMODELING

HINES VA

BUILDING 215

SCOPE OF WORK NOTE

THESE DRAWINGS ARE INTENDED TO BE COMPLEMENTARY TO THE SCOPE OF WORK DOCUMENTS PREPARED BY THE VA STAFF. SHOULD THERE BE ANY DISCREPANCIES BETWEEN THE TWO, NOTIFY VA CONTRACT FOR INSTRUCTION. ADDITIONAL INFORMATION IS CONTAINED IN THE SCOPE OF WORK DOCUMENTS THAT MAY OR MAY NOT BE INCLUDED HEREIN. ADDITIONALLY, THE PRELIMINARY LAYOUT PROVIDED BY THE VENDOR IS COMPLEMENTARY IN THE SAME MANNER.

PHASING

THE WORK SHALL BE DONE IN PHASES AS FOLLOWS:
PHASE 1 IS COMPLETION OF ROOM 147J
PHASE 2 IS COMPLETION OF ROOM 147I
PHASE 3 IS COMPLETION OF ROOM 147F
COORDINATE WITH VA STAFF REGARDING SCHEDULING OF MOVES OF PERSONNEL, ETC.

DATA WIRING

DATA WIRING IS LOCATED IN ROOM 147X AND 147L. COORDINATE WITH VA STAFF REGARDING DATA WIRING. SOME SHIFTS AT BOTH FACILITY PANELS IS REQUIRED BUT NO NEW PANELS ARE COMPLETED.

ELECTRICAL DEMO

REMOVE ALL WIRING BACK TO PANEL AND REMOVE CONDUITS NOT BEING REUSED - VERIFY FIELD CONDITIONS.

LIGHTING NOTE

LIGHTING FOR ROOM 147F NEEDS TO BE INTEGRATED INTO EXISTING LITRON LIGHTING CONTROL SYSTEM. NEW LIGHT FIXTURES MUST HAVE LITRON ECO SYSTEM TYPE BALLASTS.

FM200 NOTE

ROOMS 147F AND 147J ARE CURRENTLY FIRE PROTECTED BY FM200 GASEOUS SYSTEMS. REMOVE ALL FIRE NOZZLES, DETECTOR PANELS, ETC. ASSOCIATED WITH THESE ROOMS. VERIFY FIELD TO STILL BE PROTECTED BY GASEOUS SYSTEM. STANDARD SET FIRE SPRINKLER SYSTEM TO BE INSTALLED TO PROTECT ROOMS 147F AND 147J IN CONTRACT. ONLY REMOVE DETECTORS ASSOCIATED WITH THE GASEOUS SUPPRESSION SYSTEMS. FM200 TANKS TO BE REMOVED BY FM200 FIRE PROTECTION.

INDEX

- T-1 TITLE / COVER SHEET / INDEX
- A-1 DEMOLITION PLAN
- A-2 FLOOR PLAN
- A-3 ELECTRICAL PLAN
- A-4 CEILING / LIGHTING PLAN

EXISTING POWER

PANEL BOARD TP 120/200 3Ø 4W

AMP MAIN

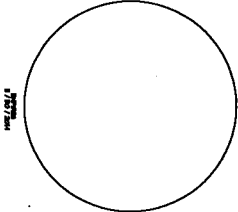
CCT. NO.	DESCRIPTION	TRIP POLE	MATTS	CCT. NO.	DESCRIPTION	TRIP POLE	MATTS
1	WORKSTATIONS - 147F	20	1	2	WORKSTATIONS - 147J	20	1
3	WORKSTATIONS - 147F	20	1	4	WORKSTATIONS - 147J	20	1
5	WORKSTATIONS - 147F	20	1	6	WORKSTATIONS - 147J	20	1
7	WORKSTATIONS - 147F	20	1	8	WORKSTATIONS - 147J	20	1
9	WORKSTATIONS - 147F	20	1	10	TV - 147J	20	1
11	WORKSTATIONS - 147F	20	1	12	TV - 147J	20	1
13	WORKSTATIONS - 147F	20	1	14	COPIER - 147G	20	1
15	WORKSTATIONS - 147F	20	1	16			
17	TV - 147F	20	1	18			
19				19			
20				20			
21				21			
22				22			
23				23			
24				24			
25				25			
26				26			
27				27			
28				28			
29				29			
30				30			

TOTAL

--	--	--	--

LB HERBST & INC.
ARCHITECTS & ENGINEERS

914 COUNTRYSIDE LANE
CAROL STREAM, IL 60106
(630) 264-5742
(630) 344-0916 fax



THIS DOCUMENT IS THE PROPERTY OF LB HERBST & INC. IT IS TO BE USED ONLY FOR THE PROJECT AND SITE SPECIFICALLY IDENTIFIED HEREIN. IT IS NOT TO BE REPRODUCED, COPIED, OR TRANSMITTED IN ANY FORM OR BY ANY MEANS, ELECTRONIC OR MECHANICAL, INCLUDING PHOTOCOPYING, RECORDING, OR BY ANY INFORMATION STORAGE AND RETRIEVAL SYSTEM, WITHOUT THE WRITTEN PERMISSION OF LB HERBST & INC.

NSOC REMODELING
HINES VA

BUILDING
215

DRAWING TITLE

X X

SCALE

PLOT TITLE

DRAWN

CHECKED

OF SHEETS

T-1