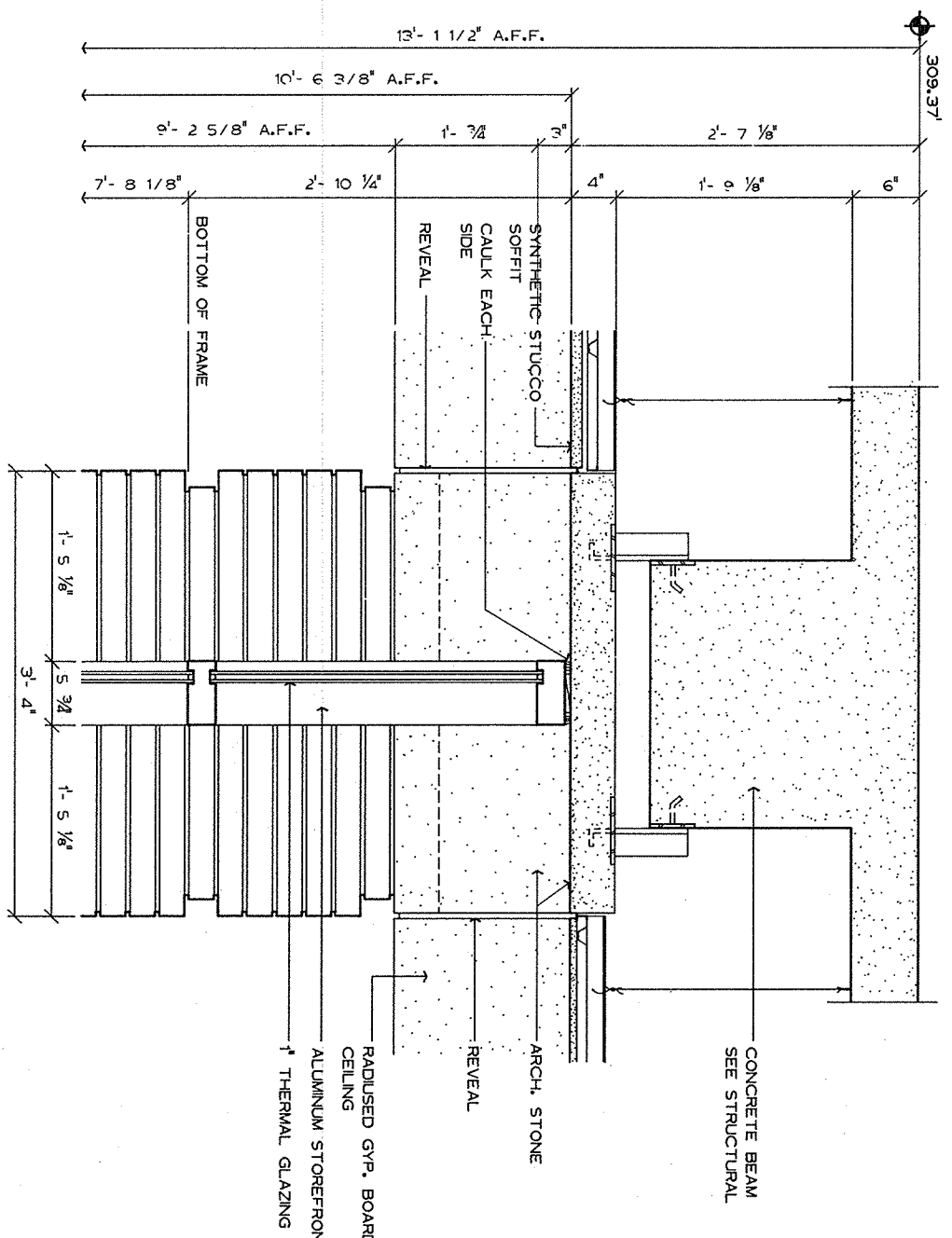
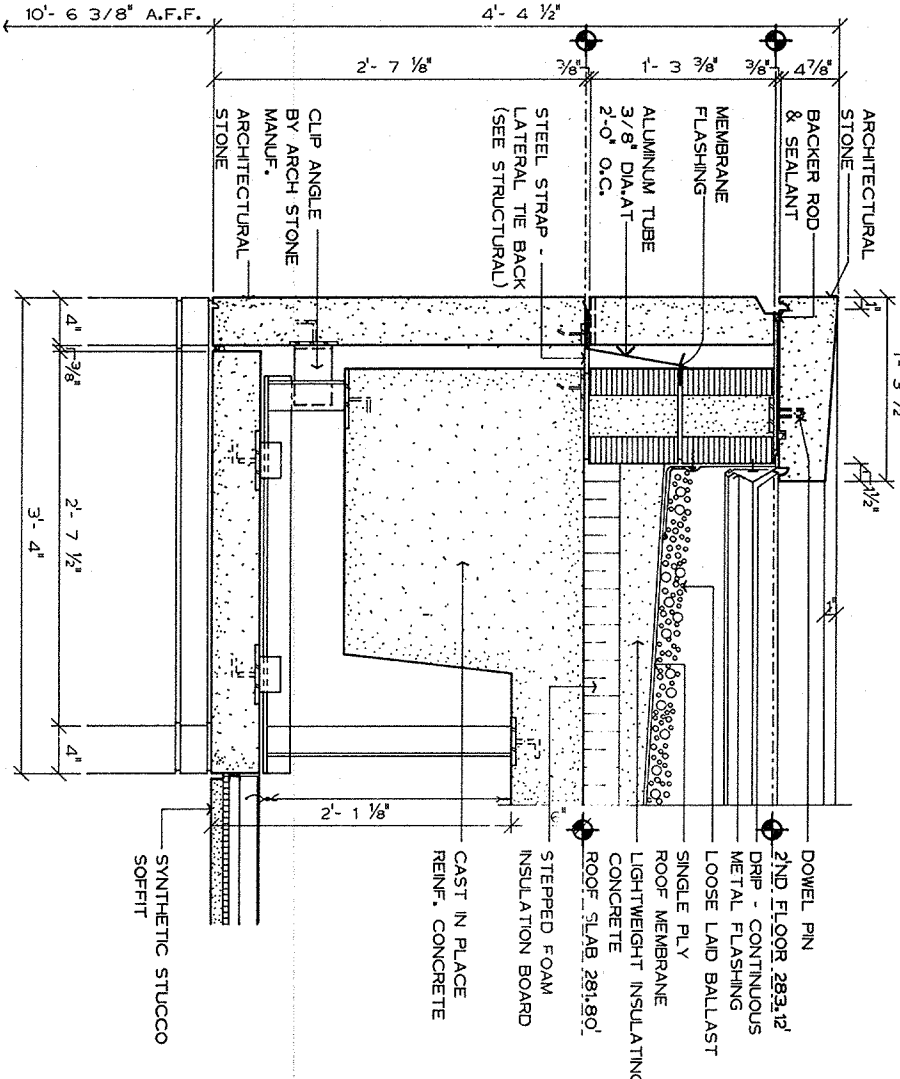


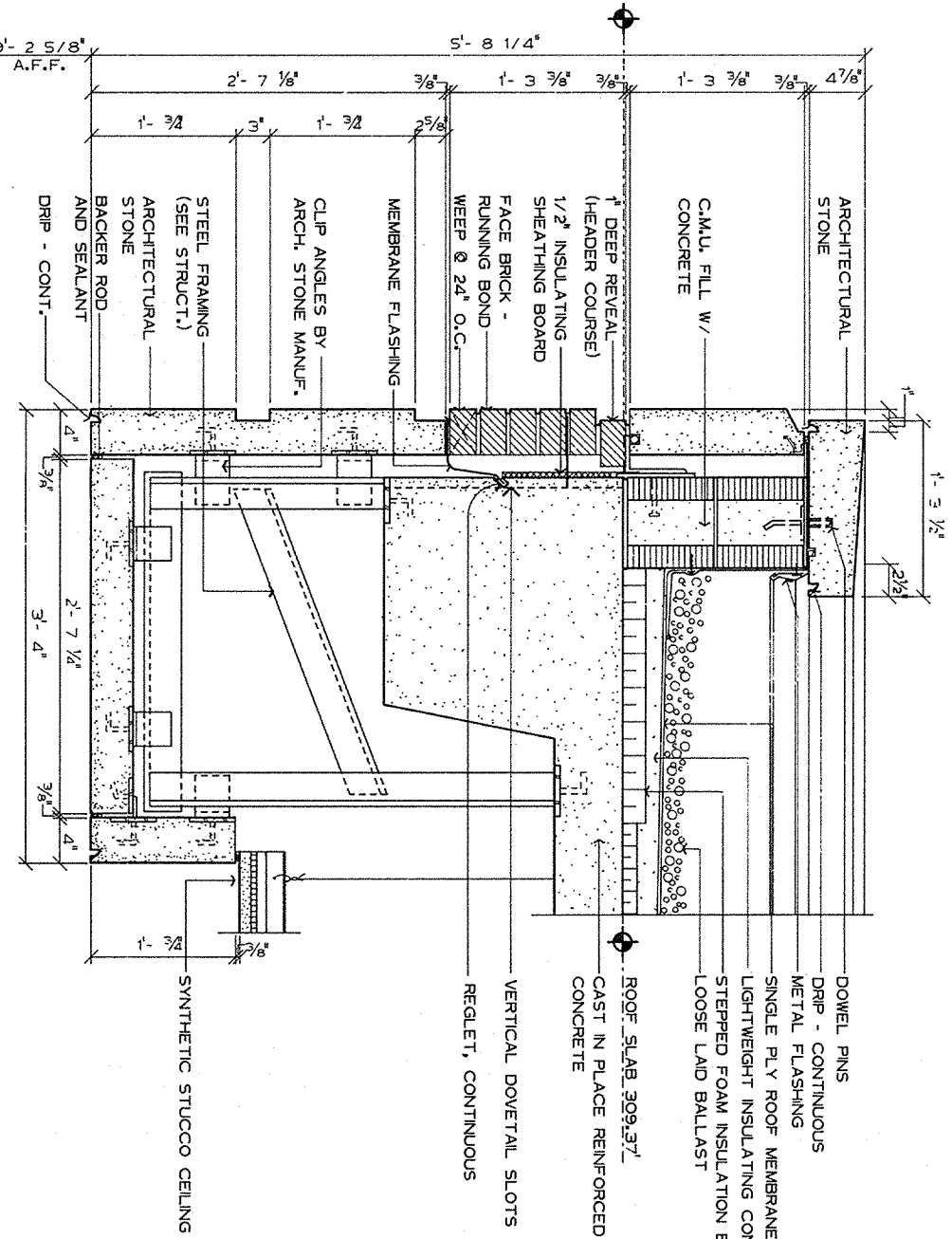
30 DETAIL
ONE AND ONE HALF INCH EQUALS ONE FOOT



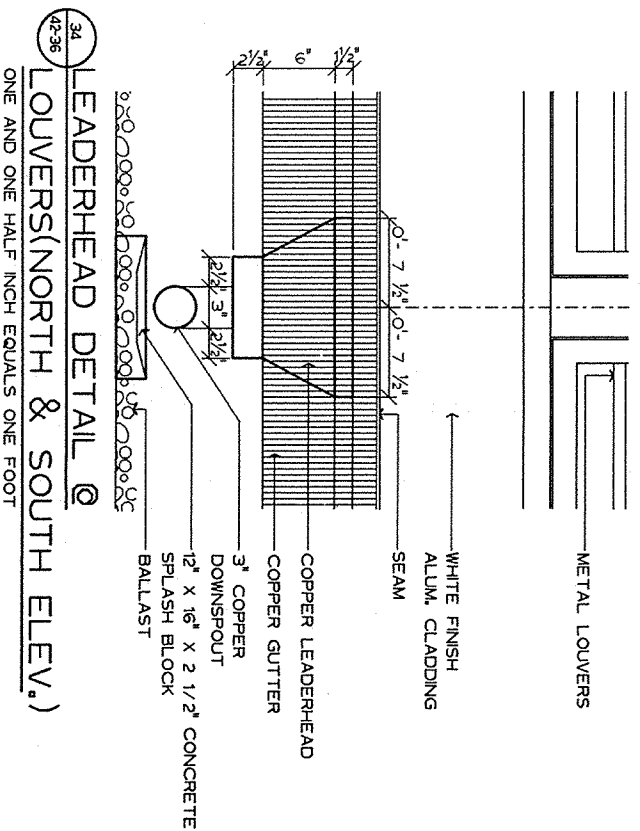
31 DETAIL
ONE AND ONE HALF INCH EQUALS ONE FOOT



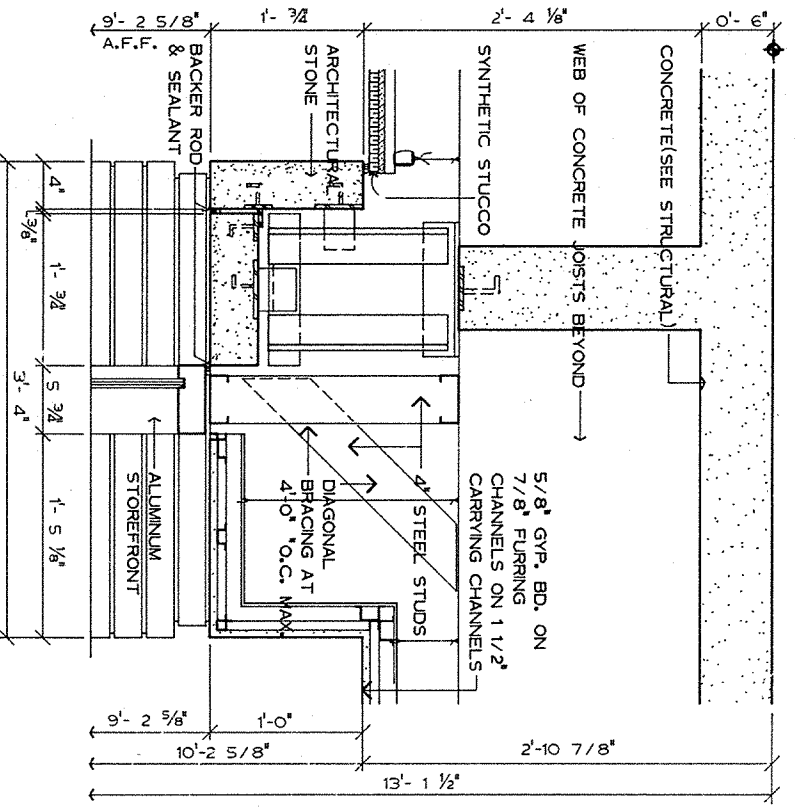
32 DETAIL
ONE AND ONE HALF INCH EQUALS ONE FOOT



33 DETAIL
ONE AND ONE HALF INCH EQUALS ONE FOOT



34 LEADERHEAD DETAIL @
LOUVERS(NORTH & SOUTH ELEV.)
ONE AND ONE HALF INCH EQUALS ONE FOOT



35 DETAIL
ONE AND ONE HALF INCH EQUALS ONE FOOT

Revisions

1	ONE
---	-----

42-36

ONE AND ONE HALF INCH EQUALS ONE FOOT

2

3

4

5

6

7

8

9

VA FORM 88-4231A, JAN 1990

DATE

2WVR

Watson Rutland / Architects Inc.

186 Commerce Street
P.O. Box 4884
Montgomery, Alabama 36104
205/263-8401

STATE OF ALABAMA
JAMES W. WATSON
REGISTERED ARCHITECT
2008

Drawing Title

Details

Project Title

Relocate Regional Office
to Department Owned
Grounds

Building Number

42

Checked

Drawn

Location

VMAC Montgomery, AL

Date

27 JANUARY 92

Project No.

322-002

Drawing No.

42-36

Dwg. 80 of 134

Office of Facilities

Department of Veterans Affairs