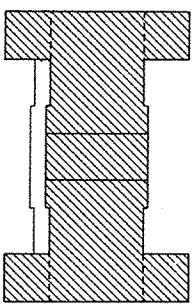


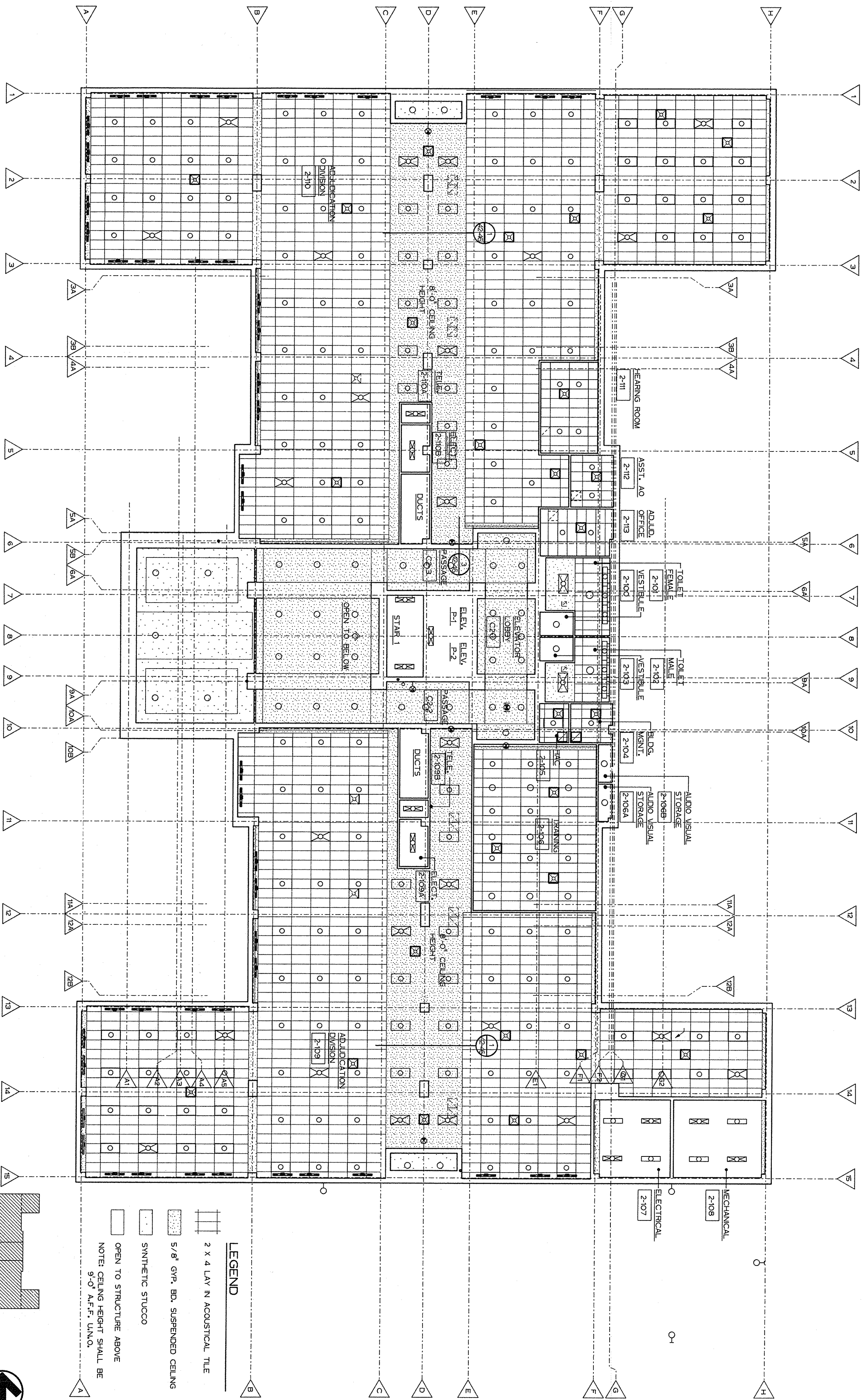
SECOND FLOOR REFLECTED CEILING PLAN

ONE EIGHTH INCH EQUALS ONE FOOT

Fully Sprinklered



- LEGEND**
- 2 x 4 LAY IN ACOUSTICAL TILE
  - 5/8" GYP. BD. SUSPENDED CEILING
  - SYNTHETIC STUCCO
  - OPEN TO STRUCTURE ABOVE
- NOTE: CEILING HEIGHT SHALL BE 9'-0" A.F.F. UNO.



Revisions

No.	Date	Description
1		
2		
3		
4		
5		
6		
7		
8		
9		

**2WPR**

Watson Rutland / Architects Inc.

186 Commerce Street  
P.O. Box 4834  
Montgomery, Alabama 36104  
205/263-6401

Approved Area Project Manager

*[Signature]*

Drawing Title

Second Floor Reflected Ceiling Plan

Project Title

Relocate Regional Office to Department Owned Grounds

Building Number

42

Location

VMAC Montgomery, AL

Date

27 JANUARY 92

Project No.

322-002

Drawing No.

42-47

Office of Facilities

Department of Veterans Affairs

