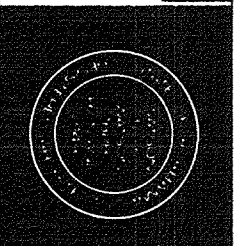


VA FORM 85-6231A, JAN 1990

Revisions	
Date	

--	--

WWR Watson Watson Rutland / Architects Inc. 166 Commerce Street P.O. Box 4834 Montgomery, Alabama 36104 205/265-6401
--



Drawing Title Basement Plans - Lighting Power and Special Systems

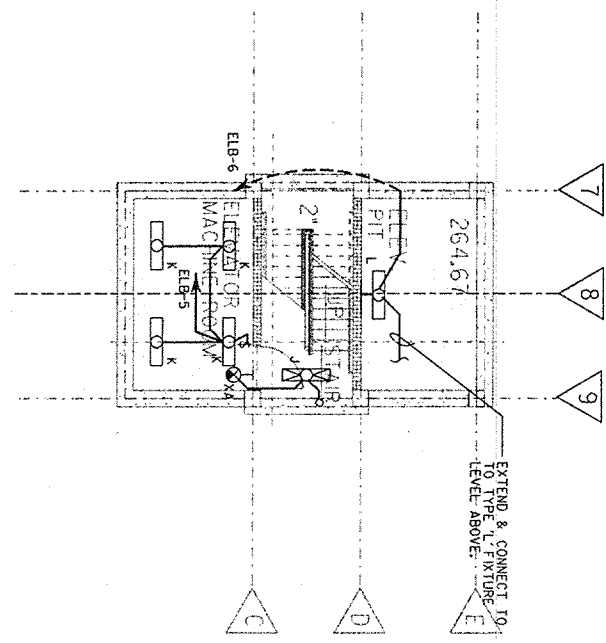
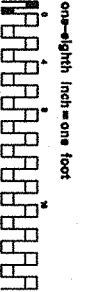
Project Title Relocate Regional Office to Department Owned Grounds
Location VMAC Montgomery, AL

DATE 27 JANUARY 92
Project No. 322-002
DRAWING NO. 42-E3
Drawn by 134



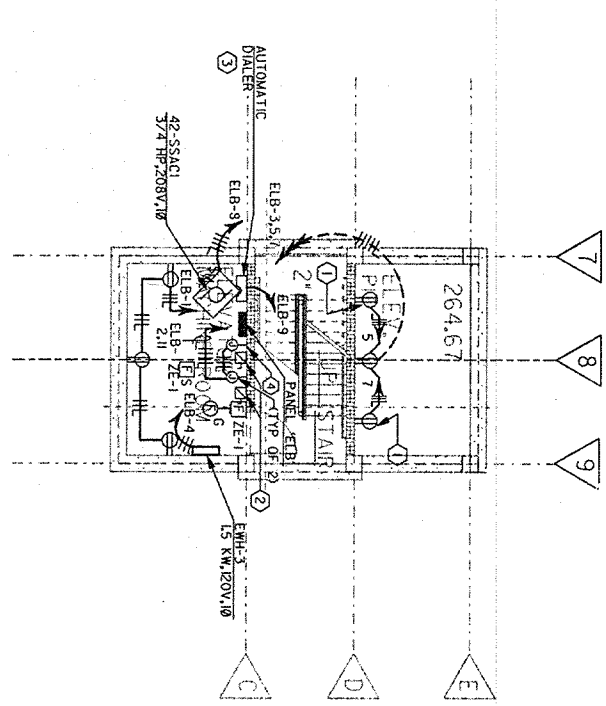
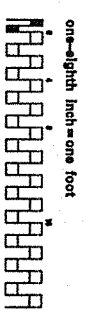
1 BASEMENT PLAN - LIGHTING

SCALE: 1/8" = 1'-0"



2 BASEMENT PLAN - POWER & SPECIAL SYSTEMS

SCALE: 1/8" = 1'-0"



- KEYNOTES: APPLY TO THIS SHEET ONLY**
- 1 DUPLEX RECEPTACLE FOR SCANNER RUMP
 - 2 LOCATE DISCONNECT SWITCHES FOR ELEVATOR N/A 42 UNITS
 - 3 TWO (2) FEET OF DOOR FRAME, REFER TO 42-E3/FB8 FEEDERS
 - 4 PROVIDE CONDUIT FROM NEAREST TELEPHONE RACKBOARD TO AUTOMATIC DIALER AND FROM AUTOMATIC DIALER TO CONNECTION POINT FOR ELEVATOR COMMUNICATIONS.
 - 5 PROVIDE JUNCTION BOX WITH FUSED DISCONNECT SWITCH, 60/100 TO ELEVATOR COMMUNICATIONS TERMINALS.