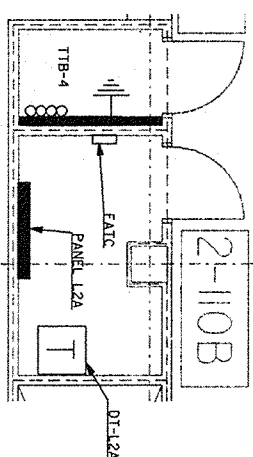
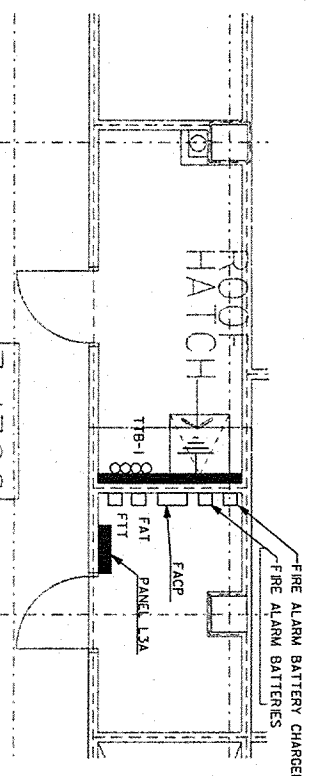


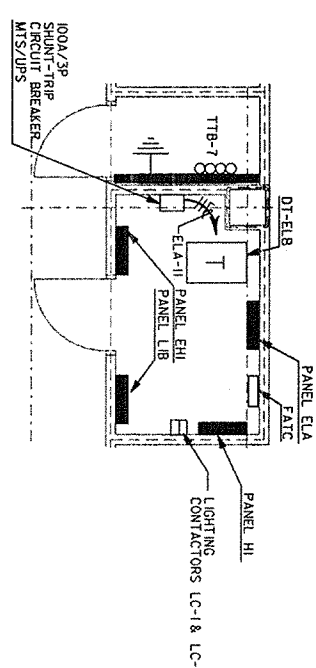
1 ELECTRICAL & TELEPHONE ROOMS - FIRST FLOOR PLAN /NORTH
SCALE: 1/4" = 1'-0"



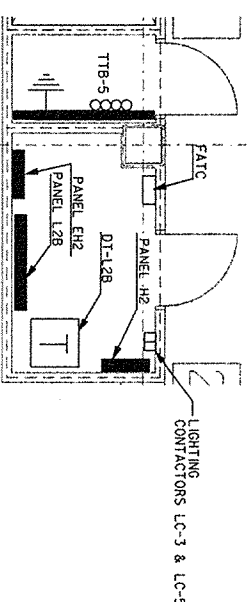
3 ELECTRICAL & TELEPHONE ROOMS - SECOND FLOOR PLAN /NORTH
SCALE: 1/4" = 1'-0"



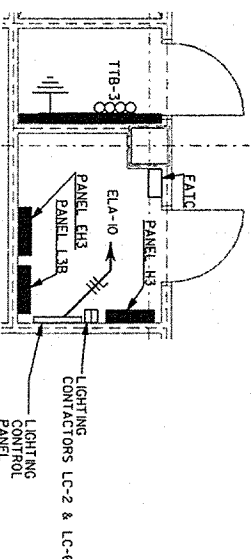
5 ELECTRICAL & TELEPHONE ROOMS - THIRD FLOOR PLAN /NORTH
SCALE: 1/4" = 1'-0"



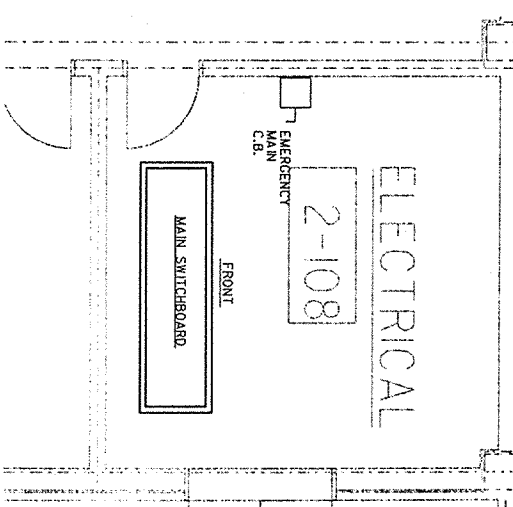
2 ELECTRICAL & TELEPHONE ROOMS - FIRST FLOOR PLAN /SOUTH
SCALE: 1/4" = 1'-0"



4 ELECTRICAL & TELEPHONE ROOMS - SECOND FLOOR PLAN /SOUTH
SCALE: 1/4" = 1'-0"



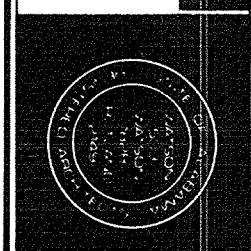
6 ELECTRICAL & TELEPHONE ROOMS - THIRD FLOOR PLAN /SOUTH
SCALE: 1/4" = 1'-0"



7 MAIN ELECTRICAL ROOM - SECOND FLOOR
SCALE: 1/4" = 1'-0"

Revisions	Date

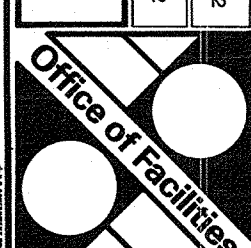
WWR
Watson Rutland / Architects Inc.
156 Commerce Street
P.O. Box 434
Montgomery, Alabama 36104
205/263-6401



Approved Area Project Manager
W. Rutland

Project Title
Relocate Regional Office
to Department Owned
Grounds
Building Number
42
Checked
Drawn
Location
VMAC, Montgomery, AL

Date
27 JANUARY 92
Project No.
322-002
DRAWING NO.
42-E13
Dwg 15901 134



one-quarter inch = one foot

