

1/4" = 1'-0" (1/4" = 1'-0")

1/4" = 1'-0" (1/4" = 1'-0")

1/4" = 1'-0" (1/4" = 1'-0")

1/4" = 1'-0" (1/4" = 1'-0")

1/4" = 1'-0" (1/4" = 1'-0")

1/4" = 1'-0" (1/4" = 1'-0")

1/4" = 1'-0" (1/4" = 1'-0")

1/4" = 1'-0" (1/4" = 1'-0")

1/4" = 1'-0" (1/4" = 1'-0")

1/4" = 1'-0" (1/4" = 1'-0")

1/4" = 1'-0" (1/4" = 1'-0")

1/4" = 1'-0" (1/4" = 1'-0")

1/4" = 1'-0" (1/4" = 1'-0")

1/4" = 1'-0" (1/4" = 1'-0")

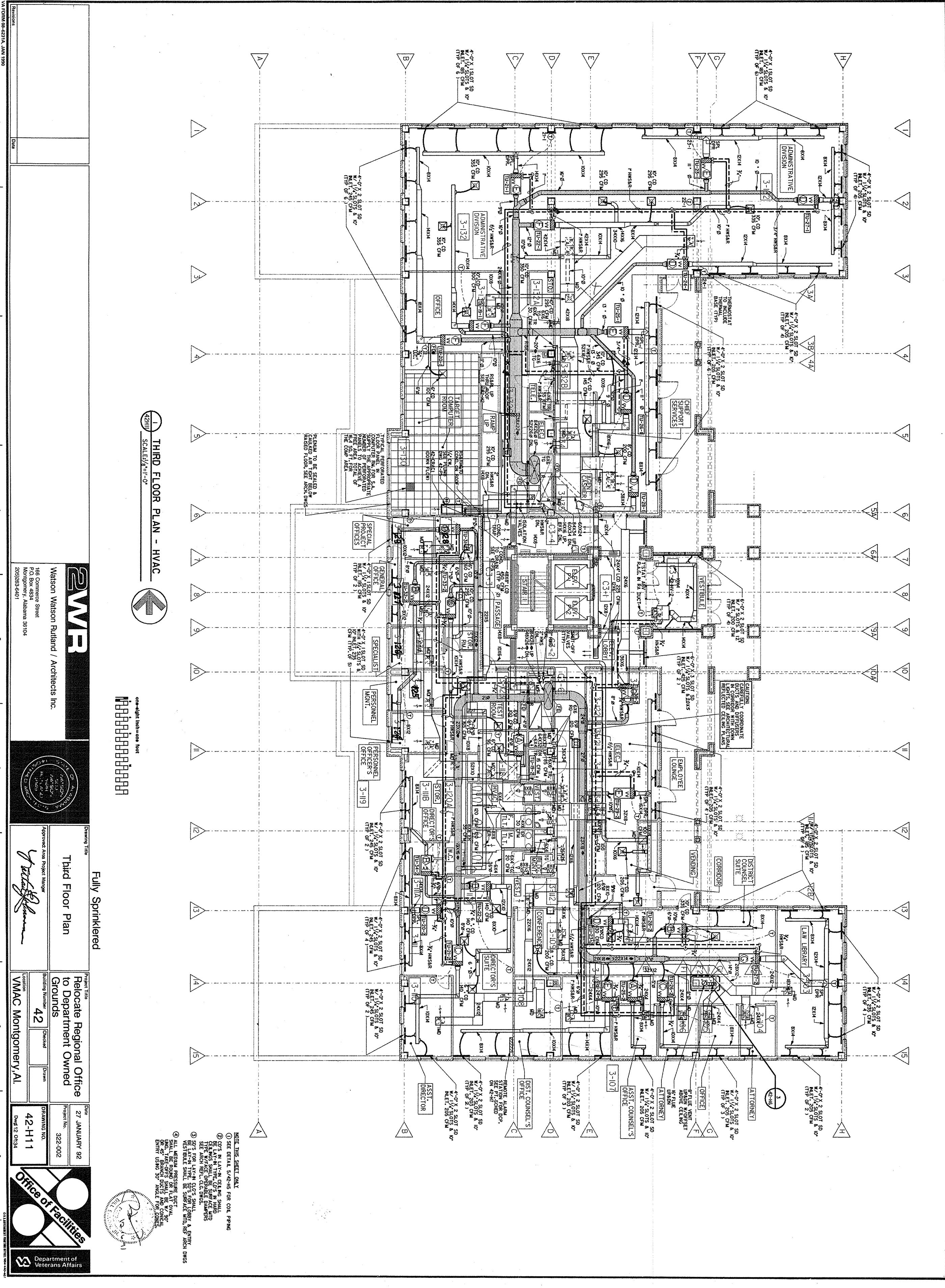
1/4" = 1'-0" (1/4" = 1'-0")

1/4" = 1'-0" (1/4" = 1'-0")

1/4" = 1'-0" (1/4" = 1'-0")

1/4" = 1'-0" (1/4" = 1'-0")

1/4" = 1'-0" (1/4" = 1'-0")



THIRD FLOOR PLAN - HVAC



one-eighth inch = one foot

Revision

Date

1

2

3

4

5

6

7

8

9

WWR

Watson Watson Rutland / Architects Inc.

166 Commerce Street
P.O. Box 4834
Montgomery, Alabama 36104
(205) 263-4401

Approved and Project Manager

Drawing Title

Third Floor Plan

Project Title

Relocate Regional Office
to Department Owned
Grounds

Location

VMAC Montgomery, AL

Date

27 JANUARY 92

Project No.

322-002

Drawing No.

42-H11

Office of Facilities

Department of
Veterans Affairs

NOTE: THIS SHEET ONLY

1 SEE DETAIL 5/42-H5 FOR C.O.L. P.F.W.

2 C.F.'S IN L.A.N. C.E.L. N.C. SHALL

3 C.E.L. N.C. SHALL BE SUFFICIENT AND

4 SEE DETAIL 5/42-H5 FOR C.O.L. P.F.W.

5 C.F.'S FOR L.A.N. C.E.L. N.C. SHALL

6 C.E.L. N.C. SHALL BE SUFFICIENT AND

7 SEE DETAIL 5/42-H5 FOR C.O.L. P.F.W.

8 C.F.'S FOR L.A.N. C.E.L. N.C. SHALL

9 C.E.L. N.C. SHALL BE SUFFICIENT AND

10 SEE DETAIL 5/42-H5 FOR C.O.L. P.F.W.

11 C.F.'S FOR L.A.N. C.E.L. N.C. SHALL

12 C.E.L. N.C. SHALL BE SUFFICIENT AND

13 SEE DETAIL 5/42-H5 FOR C.O.L. P.F.W.

14 C.F.'S FOR L.A.N. C.E.L. N.C. SHALL

15 C.E.L. N.C. SHALL BE SUFFICIENT AND

16 SEE DETAIL 5/42-H5 FOR C.O.L. P.F.W.

17 C.F.'S FOR L.A.N. C.E.L. N.C. SHALL

18 C.E.L. N.C. SHALL BE SUFFICIENT AND

19 SEE DETAIL 5/42-H5 FOR C.O.L. P.F.W.

20 C.F.'S FOR L.A.N. C.E.L. N.C. SHALL

21 C.E.L. N.C. SHALL BE SUFFICIENT AND

22 SEE DETAIL 5/42-H5 FOR C.O.L. P.F.W.

23 C.F.'S FOR L.A.N. C.E.L. N.C. SHALL

24 C.E.L. N.C. SHALL BE SUFFICIENT AND

25 SEE DETAIL 5/42-H5 FOR C.O.L. P.F.W.

26 C.F.'S FOR L.A.N. C.E.L. N.C. SHALL

27 C.E.L. N.C. SHALL BE SUFFICIENT AND

28 SEE DETAIL 5/42-H5 FOR C.O.L. P.F.W.

29 C.F.'S FOR L.A.N. C.E.L. N.C. SHALL

30 C.E.L. N.C. SHALL BE SUFFICIENT AND

31 SEE DETAIL 5/42-H5 FOR C.O.L. P.F.W.

32 C.F.'S FOR L.A.N. C.E.L. N.C. SHALL

33 C.E.L. N.C. SHALL BE SUFFICIENT AND

34 SEE DETAIL 5/42-H5 FOR C.O.L. P.F.W.

35 C.F.'S FOR L.A.N. C.E.L. N.C. SHALL

36 C.E.L. N.C. SHALL BE SUFFICIENT AND

37 SEE DETAIL 5/42-H5 FOR C.O.L. P.F.W.

38 C.F.'S FOR L.A.N. C.E.L. N.C. SHALL

39 C.E.L. N.C. SHALL BE SUFFICIENT AND

40 SEE DETAIL 5/42-H5 FOR C.O.L. P.F.W.

41 C.F.'S FOR L.A.N. C.E.L. N.C. SHALL

42 C.E.L. N.C. SHALL BE SUFFICIENT AND

43 SEE DETAIL 5/42-H5 FOR C.O.L. P.F.W.

44 C.F.'S FOR L.A.N. C.E.L. N.C. SHALL

45 C.E.L. N.C. SHALL BE SUFFICIENT AND

46 SEE DETAIL 5/42-H5 FOR C.O.L. P.F.W.

47 C.F.'S FOR L.A.N. C.E.L. N.C. SHALL

48 C.E.L. N.C. SHALL BE SUFFICIENT AND

49 SEE DETAIL 5/42-H5 FOR C.O.L. P.F.W.

50 C.F.'S FOR L.A.N. C.E.L. N.C. SHALL

51 C.E.L. N.C. SHALL BE SUFFICIENT AND

52 SEE DETAIL 5/42-H5 FOR C.O.L. P.F.W.

53 C.F.'S FOR L.A.N. C.E.L. N.C. SHALL

54 C.E.L. N.C. SHALL BE SUFFICIENT AND

55 SEE DETAIL 5/42-H5 FOR C.O.L. P.F.W.

56 C.F.'S FOR L.A.N. C.E.L. N.C. SHALL

57 C.E.L. N.C. SHALL BE SUFFICIENT AND

58 SEE DETAIL 5/42-H5 FOR C.O.L. P.F.W.

59 C.F.'S FOR L.A.N. C.E.L. N.C. SHALL

60 C.E.L. N.C. SHALL BE SUFFICIENT AND

61 SEE DETAIL 5/42-H5 FOR C.O.L. P.F.W.

62 C.F.'S FOR L.A.N. C.E.L. N.C. SHALL

63 C.E.L. N.C. SHALL BE SUFFICIENT AND

64 SEE DETAIL 5/42-H5 FOR C.O.L. P.F.W.

65 C.F.'S FOR L.A.N. C.E.L. N.C. SHALL

66 C.E.L. N.C. SHALL BE SUFFICIENT AND

67 SEE DETAIL 5/42-H5 FOR C.O.L. P.F.W.

68 C.F.'S FOR L.A.N. C.E.L. N.C. SHALL

69 C.E.L. N.C. SHALL BE SUFFICIENT AND

70 SEE DETAIL 5/42-H5 FOR C.O.L. P.F.W.

71 C.F.'S FOR L.A.N. C.E.L. N.C. SHALL

72 C.E.L. N.C. SHALL BE SUFFICIENT AND

73 SEE DETAIL 5/42-H5 FOR C.O.L. P.F.W.

74 C.F.'S FOR L.A.N. C.E.L. N.C. SHALL

75 C.E.L. N.C. SHALL BE SUFFICIENT AND

76 SEE DETAIL 5/42-H5 FOR C.O.L. P.F.W.

77 C.F.'S FOR L.A.N. C.E.L. N.C. SHALL

78 C.E.L. N.C. SHALL BE SUFFICIENT AND

79 SEE DETAIL 5/42-H5 FOR C.O.L. P.F.W.

80 C.F.'S FOR L.A.N. C.E.L. N.C. SHALL

81 C.E.L. N.C. SHALL BE SUFFICIENT AND

82 SEE DETAIL 5/42-H5 FOR C.O.L. P.F.W.

83 C.F.'S FOR L.A.N. C.E.L. N.C. SHALL

84 C.E.L. N.C. SHALL BE SUFFICIENT AND

85 SEE DETAIL 5/42-H5 FOR C.O.L. P.F.W.

86 C.F.'S FOR L.A.N. C.E.L. N.C. SHALL

87 C.E.L. N.C. SHALL BE SUFFICIENT AND

88 SEE DETAIL 5/42-H5 FOR C.O.L. P.F.W.

89 C.F.'S FOR L.A.N. C.E.L. N.C. SHALL

90 C.E.L. N.C. SHALL BE SUFFICIENT AND

91 SEE DETAIL 5/42-H5 FOR C.O.L. P.F.W.

92 C.F.'S FOR L.A.N. C.E.L. N.C. SHALL

93 C.E.L. N.C. SHALL BE SUFFICIENT AND

94 SEE DETAIL 5/42-H5 FOR C.O.L. P.F.W.

95 C.F.'S FOR L.A.N. C.E.L. N.C. SHALL

96 C.E.L. N.C. SHALL BE SUFFICIENT AND

97 SEE DETAIL 5/42-H5 FOR C.O.L. P.F.W.

98 C.F.'S FOR L.A.N. C.E.L. N.C. SHALL

99 C.E.L. N.C. SHALL BE SUFFICIENT AND

100 SEE DETAIL 5/42-H5 FOR C.O.L. P.F.W.