

three inches = one foot

one and one-half inches = one foot

one inch = one foot

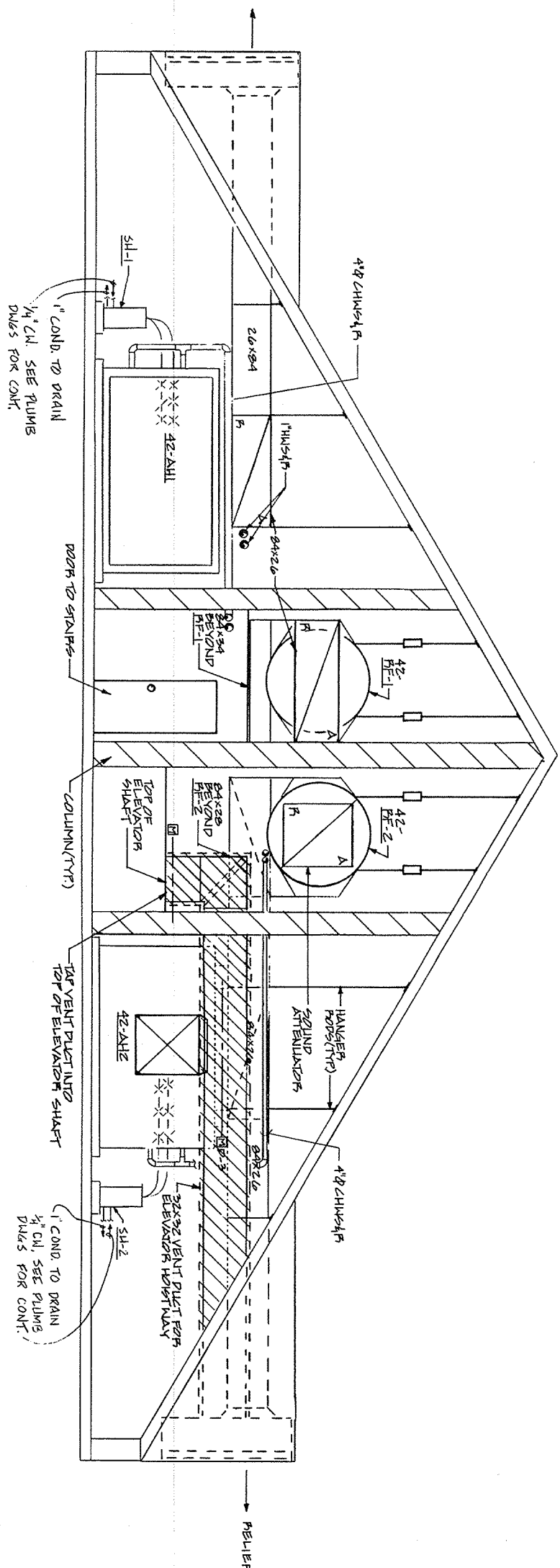
three-quarters inch  $\approx$  one foot

one-half inch = one foot

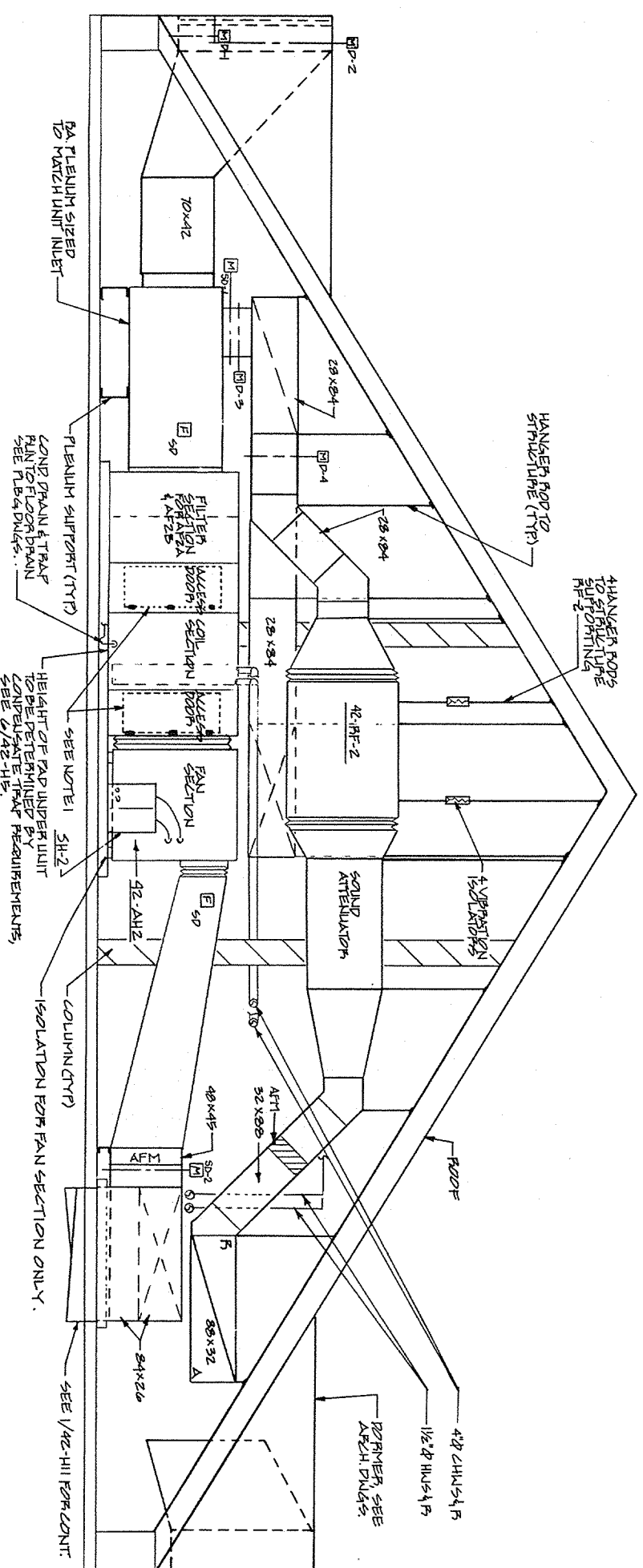
three-eighths inch  $\approx$  one foot

one-quarter inch = one foot

one-eighth inch = one foot

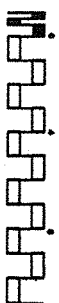


1  
42H14  
PENTHOUSE SECTION  
SCALE: 1/4"=1'-0"



2  
42H14  
PENTHOUSE SECTION  
SCALE: 1/4" = 1'-0"

one-quarter inch = one foot



## Fully Sprinklered

## Penthouse Sections

---

ed Area Project Manager

*W. H. R.*

*John H. Brown*

00

**Project Title**  
**Relocate Regional Office**

## to Department Owners Grounds

Building Number	42	Checked	Drawn
-----------------	----	---------	-------

42		
----	--	--

Location
VMAC: Montgomery Al

VIVAC Multilingual, A.I.

Date  
27 JANUARY 92

Project No.	322-002
-------------	---------

DRAWING NO.

42-H14

42-1114  
Dwd 15 0134

Dwg 15 01134

6

NOTES: (THIS SHEET ONLY)  
1) MINIMUM SIZE OF WALK-IN ACCESS DOOR SHALL BE 18" WIDE x 36" HIGH.

12.16.94



Department of  
Veterans Affairs