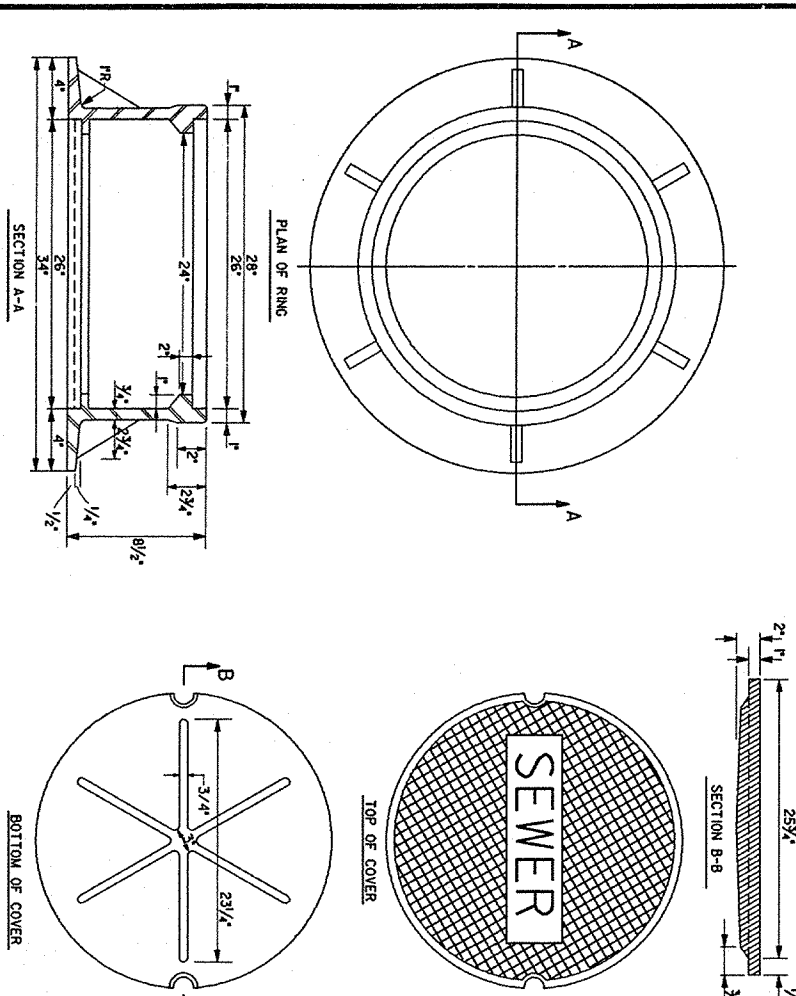


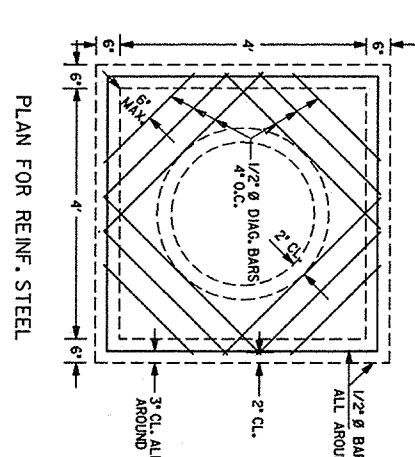
5. DETAIL - JUNCTION BOX AT EXISTING CULVERT
NOT TO SCALE

- NOTES:
1. CONTRACTOR MAY ELECT TO EXTEND BRICK WALLS IN LIEU OF PRECAST CONCRETE.
 2. PRECAST CONCRETE SHALL BE A MINIMUM OF 24 HOURS BEFORE BACKFILLING.
 3. CONTRACTOR TO VERIFY WIDTH OF EXISTING REINFORCED CONCRETE CULVERT TO THE OWNER.

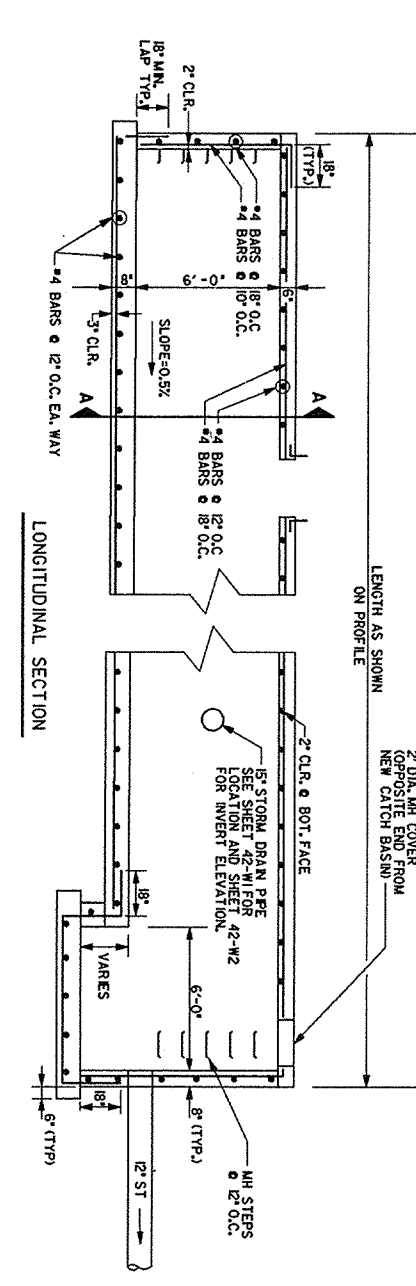


7. STANDARD MANHOLE COVER & RING
NOT TO SCALE

STATE OF ALABAMA - 95-90-X



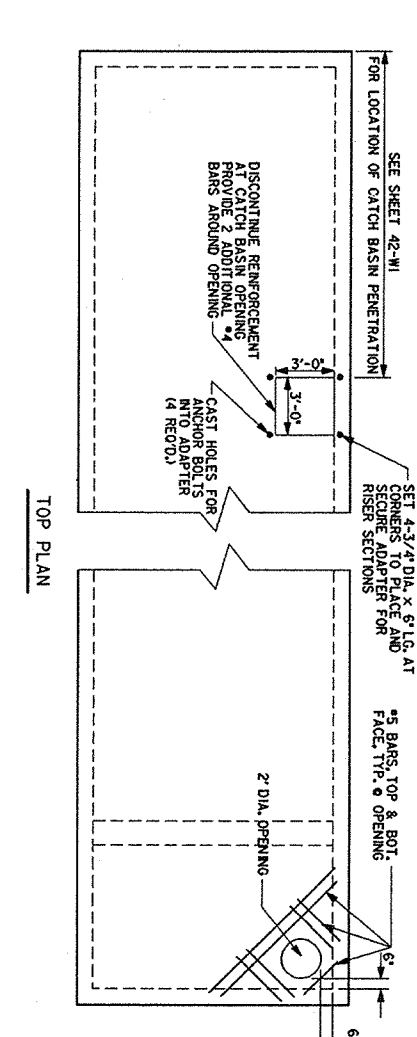
6. DETAIL FOR REINFORCING STEEL
NOT TO SCALE



4. DETENTION STRUCTURE DETAIL
SCALE: 1/4" = 1'

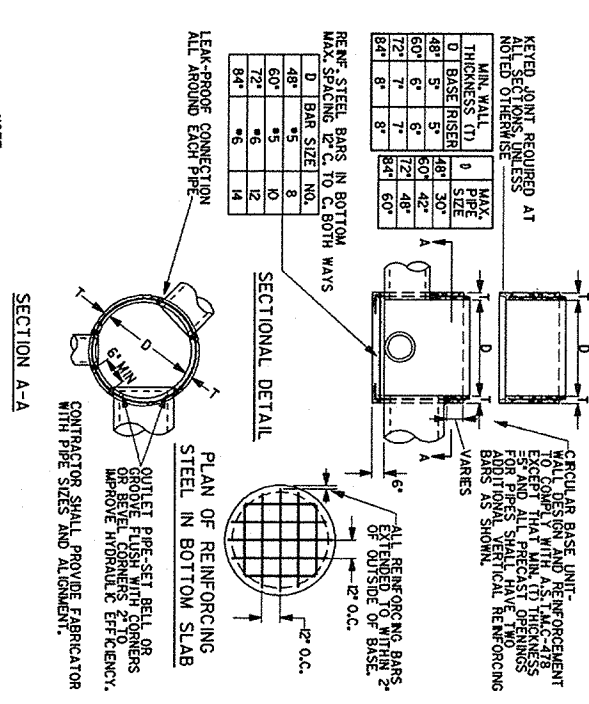
NOTE: PROVIDE 4" CONC. WATER STOP AT ALL JOINTS.

1. PROVIDE 4" CONC. WATER STOP AT ALL JOINTS.
2. ALL PENETRATIONS SHALL BE PROTECTED BY A MINIMUM OF 2" CONC. AND 4" WATER STOP.
3. DETENTION STRUCTURE SHALL BE CONSTRUCTED OF PRECAST CONCRETE WITH REINFORCING STEEL. ALL JOINTS SHALL BE PROTECTED BY A MINIMUM OF 2" CONC. AND 4" WATER STOP.
4. DETENTION STRUCTURE SHALL BE CONSTRUCTED OF PRECAST CONCRETE WITH REINFORCING STEEL. ALL JOINTS SHALL BE PROTECTED BY A MINIMUM OF 2" CONC. AND 4" WATER STOP.



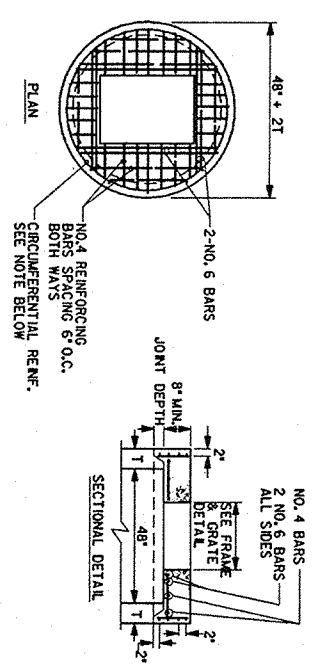
1. TYPE 'D' YARD INLET
NOT TO SCALE

NOTE: DETENTION OF FLOODING TO BE A MINIMUM OF 10" BELOW FLOOD LEVEL.



2. CONCRETE SECTIONS CIRCULAR PRECAST REINFORCED
NOT TO SCALE

NOTE: MANHOLE STEPS SHALL CONFORM TO DRAINAGE STANDARDS. OVER 4' IN DEPTH WITH A MAXIMUM SPACING OF 2' IN DEPTH. ALL JOINTS SHALL BE PROTECTED BY A MINIMUM OF 2" CONC. AND 4" WATER STOP.



3. ADAPTER
NOT TO SCALE

NOTE: ALL STEPS AND REINFORCING SHALL CONFORM TO DRAINAGE STANDARDS. OVER 4' IN DEPTH WITH A MAXIMUM SPACING OF 2' IN DEPTH. ALL JOINTS SHALL BE PROTECTED BY A MINIMUM OF 2" CONC. AND 4" WATER STOP.

Revision

Date

1

2

3

4

5

6

7

8

9

VA FORM 88-237A, JAN 1990

166 Commerce Street
P.O. Box 4834
Montgomery, Alabama 36104
205/263-6401

2WPR

Watson Watson Rutland / Architects Inc.

Approved Area Project Manager

[Signature]

Project Title

Drainage Details

Project No.

322-002

Building Number

42

Location

VMAC Montgomery, AL

Drawing No.

42-W5

Drawn By

01-24

27 JANUARY 92

322-002

Office of Facilities

Department of Veterans Affairs