

NOT
USED

1 ELEVATION

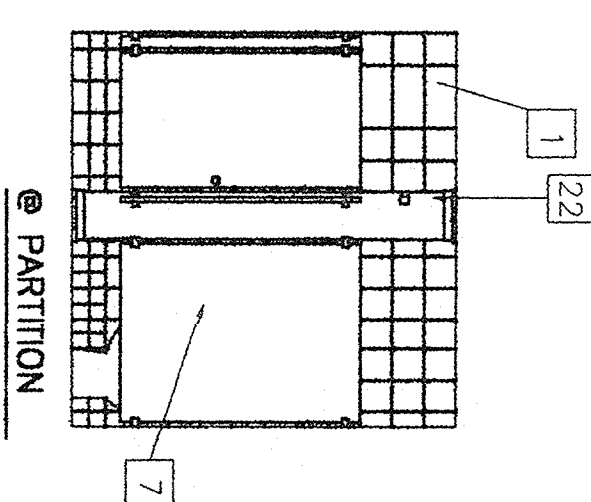
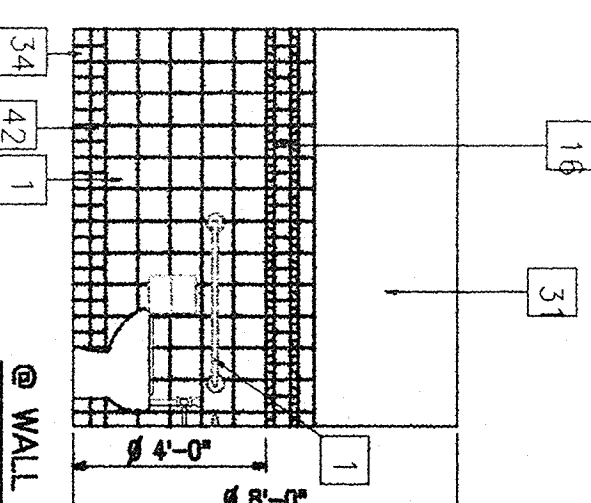
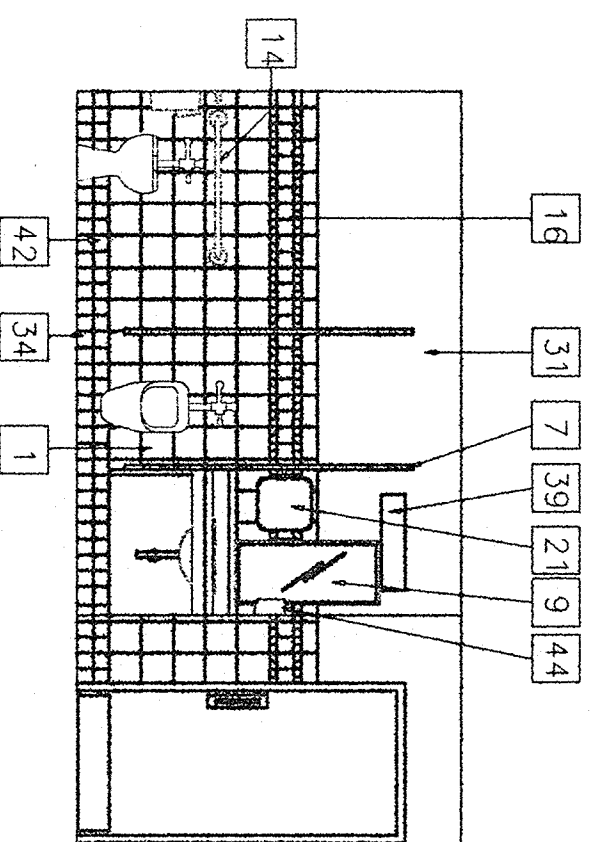
1/4"=1'-0"

2 ELEVATION

1/4"=1'-0"

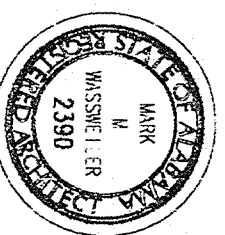
3 ELEVATION

1/4"=1'-0"



NOTES

1. CERAMIC TILE
2. NOT USED
3. NOT USED
4. WALL COVERING: TAPE, BED AND SAND
5. GYPSUM BOARD JOINTS SMOOTH
6. NOT USED
7. STAINLESS STEEL TOILET PARTITION
8. NOT USED
9. MIRROR AS SCHEDULED, MOUNT 40" A.F.F.
10. NOT USED
11. NOT USED
12. MOUNT TOWEL DISPENSER WITH HIGHEST OPERATING MECHANISM AT 48" AFF. IF THERE IS NO MECHANISM, LOCATE TOWEL SLOT AT 48" AFF
13. NOT USED
14. GRAB BARS, REFER TO TOILET ACCESSORY SCHEDULE
15. NOT USED
16. ACCENT TILE BAND
17. FIRE ALARM DEVICE (WHERE APPLICABLE)
18. QUARRY TILE BASE
19. NOT USED
20. NOT USED
21. PAPER TOWEL DISPENSER
22. END HANDICAP STALL ONLY SHALL HAVE A FLOOR TO CEILING PLASTER WITH BLOCKING IN CEILING (SHOP DRAWINGS) ABOVE CEILING, BRACED TO STRUCTURE, TO SUPPORT PLASTER (STAINLESS STEEL)
23. NOT USED
24. WOOD DOOR, CLEAR FINISH
25. NOT USED
26. NOT USED
27. NOT USED
28. NOT USED
29. NOT USED
30. NOT USED
32. NOT USED
33. NOT USED
34. CERAMIC TILE BASE
35. NOT USED
36. FLOOR TO CEILING PLASTER TO BRACE URINAL SCREEN, 3" WIDE MAXIMUM, PROVIDE CEILING BRACING PER SHOP DRAWINGS/ TYPICAL
37. DEVICE/ELEC
38. NOT USED
39. WALL MOUNTED LIGHT FIXTURE
40. NOT USED
41. 8x8 WALL TILE/ GRAY HIGH GLOSS TEXTURE
42. 4x4 WALL TILE - BLACK HIGH GLOSS TEXTURE
43. NOT USED
44. SOAP DISPENSER -
45. INSTALL BOTTOM OF DISPENSER 44" AFF - VERTICAL CENTERLINE OF DISPENSER 15" OFF FRONT FACE OF VANITY



7 ELEVATION

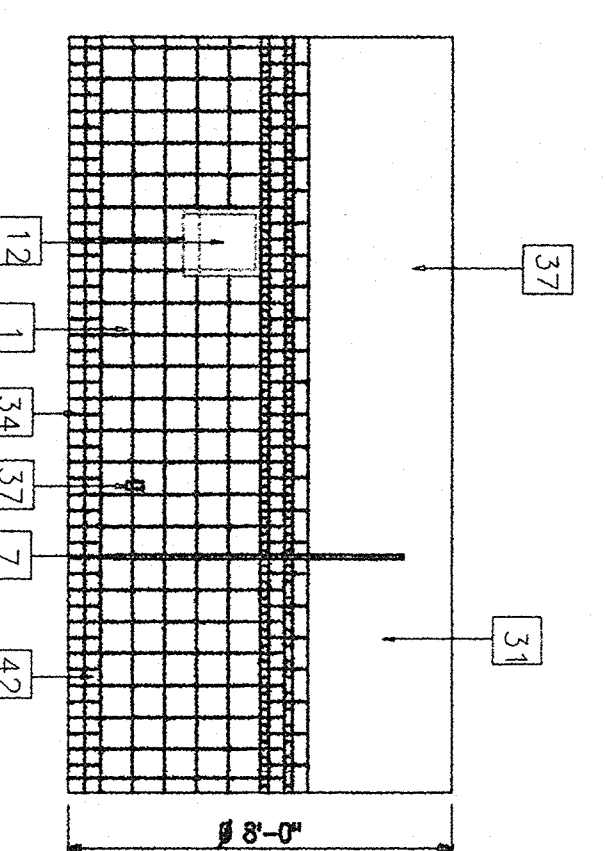
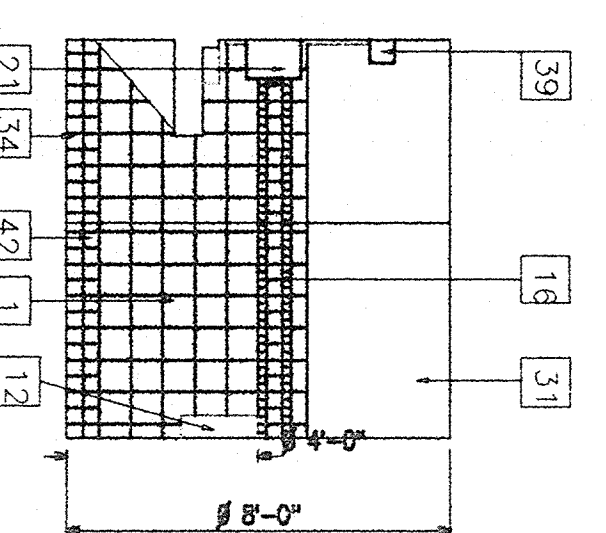
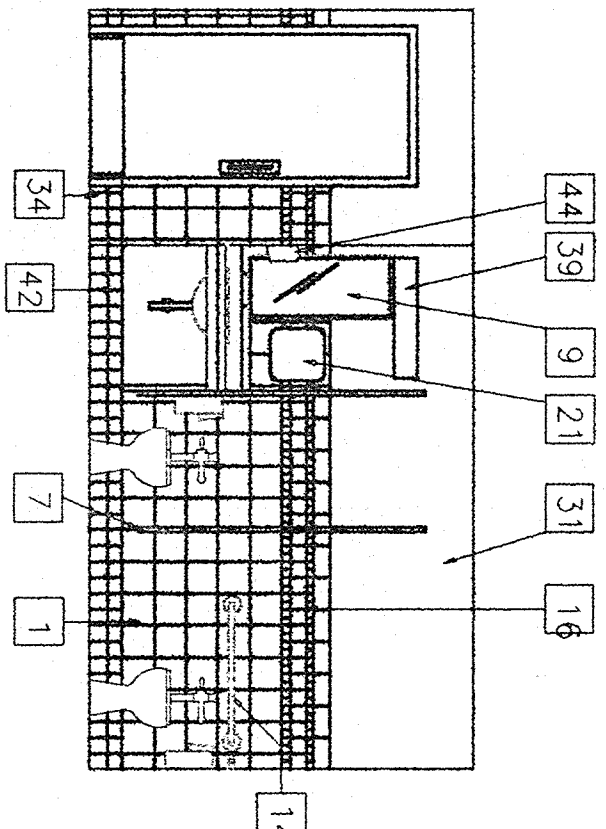
1/4"=1'-0"

8 ELEVATION

1/4"=1'-0"

9 ELEVATION

1/4"=1'-0"



Wassweiller
ARCHITECT
334 221 9736

VA REGIONAL OFFICE
3456 PERRY HILL ROAD
MONTGOMERY, ALABAMA

Project No.	302VB3034	1 Jan 2003
Interior Elevations	Storage Building	
Client	CENTRAL ALABAMA VETERANS HEALTH CARE SYSTEM/ WEST CAMPUS	MAN
Scale	A-1/02	Fig 17 of 68