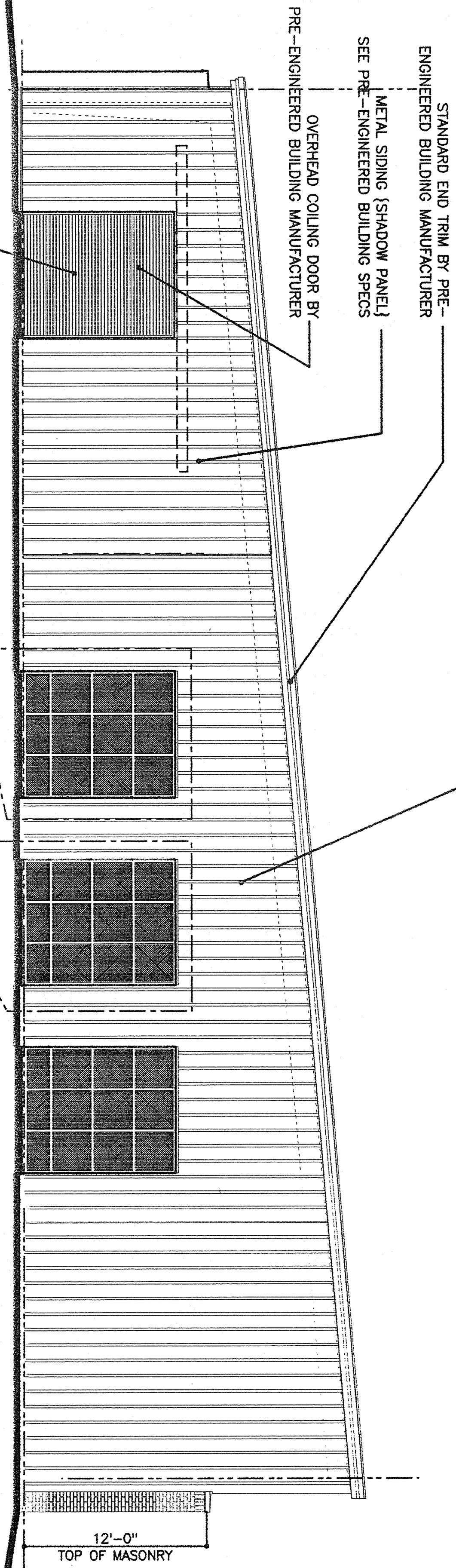




NOTE STRUCTURAL FRAMING FOR THIS ENDWALL SHALL BE DESIGNED FOR FUTURE EXPANSION, AS A FUTURE INTERIOR MAIN FRAME. COLUMN NOTED IS CONTRACTORS' OPTION WITH DESIGN OF PRE-ENGINEERED METAL BUILDING ASSEMBLY. NO INTERIOR COLUMNS ARE ACCEPTABLE EXCEPT AT THIS 'FUTURE' EXPANDABLE FRAME.

TYPICAL METAL BUILDING TRIM, SIDING, AND ALL CLOSURES PROVIDED BY PRE-ENGINEERED METAL BUILDING MANUFACTURER. DO NOT PROVIDE PRODUCTS BY ANY OTHER SOURCE. ENTIRE PRE-ENGINEERED ASSEMBLY SHALL BE BY A SINGLE PRE-ENGINEERED METAL BUILDING MANUFACTURER. SEE SPECIFICATIONS FOR ADDITIONAL REQUIREMENTS.



EAST ELEVATION
SCALE: 3/16" = 1'-0"

10' HIGH ELECTRICALLY OPERATED OVERHEAD COILING DOOR AND OVERHEAD CANOPY. SEE FLOOR PLAN AND ELECTRICAL

SEE TYPICAL FRAME ELEVATION WITH DOOR

SEE TYPICAL FRAME ELEVATION

Wassweiler
ARCHITECT
334 221 9736

VA REGIONAL OFFICE
345 PERRY HILL ROAD
MONTGOMERY, ALABAMA

Project No.	322V83034	Issue No.	1
Project Name	PREFABRICATE METAL STORAGE BUILDING	Issue Date	1 Jan 2003
Client	VA REGIONAL OFFICE	Design No.	A-2.2
Architect	Wassweiler Architect	Scale	3/16" = 1'-0"
Engineer	Mark M. Wassweiler	Notes	SEE SPECIFICATIONS FOR ADDITIONAL REQUIREMENTS.