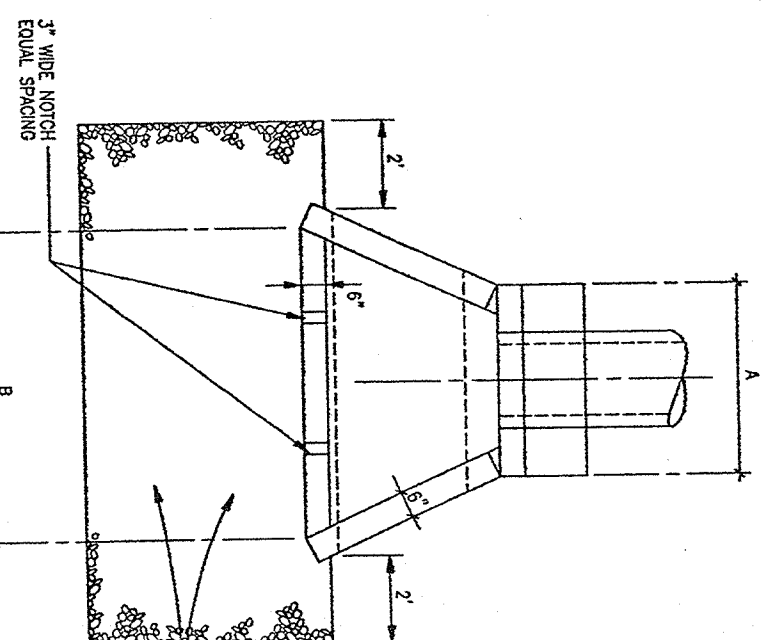


FOOTING DIMENSIONS											
D	A	B	C	E	F	G	H	I	J	K	L
15"	3'-0"	5'-0"	8"	3'-0"	2'-10"	0'-9"	2'-0"	1'-0"	0'-6"	0'-6"	7½"
16"	3'-0"	5'-0"	6"	3'-6"	3'-8"	0'-9"	2'-0"	1'-0"	0'-6"	0'-6"	7½"
20"	4'-0"	7'-0"	6"	4'-6"	3'-8"	1'-0"	2'-0"	1'-0"	0'-6"	0'-6"	7½"
34"	4'-6"	8'-0"	8"	5'-6"	4'-3"	1'-0"	2'-0"	1'-0"	0'-6"	0'-6"	7½"
36"	5'-0"	10'-0"	8"	6'-0"	5'-9"	1'-6"	2'-0"	1'-0"	0'-6"	0'-6"	7½"
42"	5'-6"	11'-0"	8"	6'-6"	5'-9"	1'-6"	2'-6"	1'-3"	0'-9"	1'-0"	7½"
48"	6'-0"	14'-0"	8"	7'-6"	5'-9"	2'-0"	2'-6"	1'-3"	0'-9"	1'-0"	7½"

NOTES:

1. ALL REINFORCING BARS SHALL BE #4@12" E/W, OR AS SHOWN.
2. MINIMUM CLEAR COVER OVER REINFORCING SHALL BE 1 1/2".
3. BEND FLOOR BARS AT WALLS UP VERTICALLY INTO WALLS.
3. CHAIRER ALL EXPOSED EDGES 3/4".



TYPICAL HEADWALL DETAIL

PLAN

TYPE "S" WING INLET / 7

TYPE
NOT TO SCALE

WASSWEILER
ARCHITECT

VIA REGIONAL OFFICE
345 PERRY HILL ROAD
MONTGOMERY, ALABAMA

Approved	Drawing Title MISCELLANEOUS DETAILS	Project Title PREFABRICATE METAL STORAGE BUILDING	Project No. 322V/33034	Date 1 Jan 2003
Approved				
Approved				
Approved				
Approved	Drawing Number DPF	Issued DPF	Design DPF	Issued By C-8-0
Approved				
Approved				
Approved				
Issued ISSUED: CENTRAL ALABAMA VETERANS HEALTH CARE SYSTEM/VEET CAMPUS				