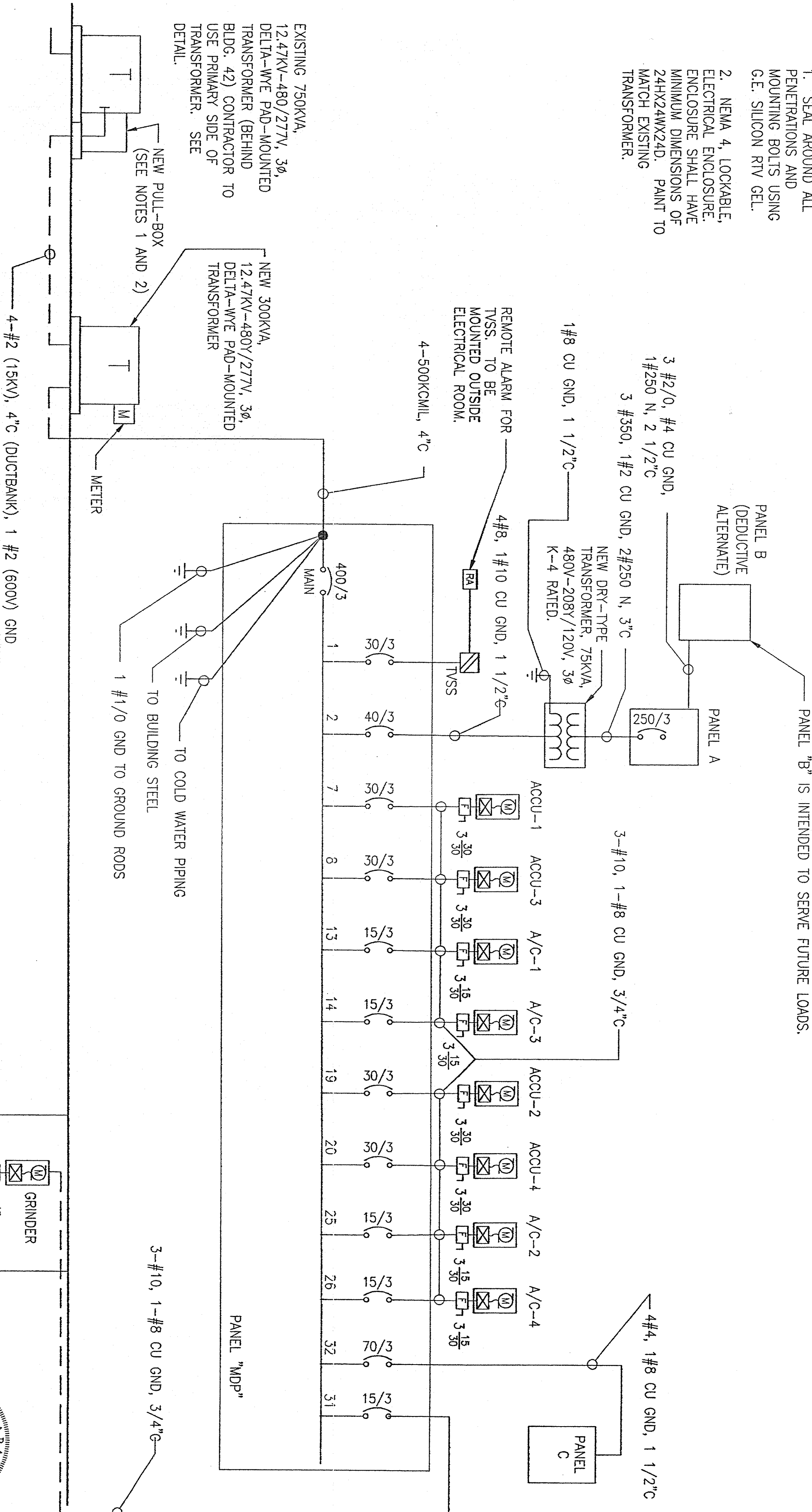


- NOTES:
1. SEAL AROUND ALL PENETRATIONS AND MOUNTING BOLTS USING G.E. SILICON RTV GEL.
  2. NEMA 4, LOCKABLE, ELECTRICAL ENCLOSURE. ENCLOSURE SHALL HAVE MINIMUM DIMENSIONS OF 24HX24WX24D. PAINT TO MATCH EXISTING TRANSFORMER.



# POWER SINGLE-LINE DIAGRAM

NO SCALE

Wasswell  
ARCHITECT  
936

VA REGIONAL OFFICE  
345 PERRY HILL ROAD  
MONTGOMERY, ALABAMA

Approved	Project No.	322VB0304	1 Jan 2003
Approved	Project Name	POWVER SINGLE-LINE DIAGRAM	
Approved	Project Location	PREFABRICATE METAL STORAGE BUILDING	
Approved	Project Description	UNDER: CENTRAL ALABAMA VETERANS HEALTH CARE SYSTEM/WEST BUILDING	
Approved	Project No.	322VB0304	1 Jan 2003
Approved	Project Name	POWVER SINGLE-LINE DIAGRAM	
Approved	Project Location	PREFABRICATE METAL STORAGE BUILDING	
Approved	Project Description	UNDER: CENTRAL ALABAMA VETERANS HEALTH CARE SYSTEM/WEST BUILDING	
Approved	Project No.	322VB0304	1 Jan 2003
Approved	Project Name	POWVER SINGLE-LINE DIAGRAM	
Approved	Project Location	PREFABRICATE METAL STORAGE BUILDING	
Approved	Project Description	UNDER: CENTRAL ALABAMA VETERANS HEALTH CARE SYSTEM/WEST BUILDING	

Professional Seal  
E-32  
1/13/2003