

MARK	LOCATION	TYPE SEE NOTES	CFM		EXT. STATIC PRESS. "W.G.	COOLING COIL				HOT WATER HEATING COIL					AIR FLOWING				REMARKS			
			SUP.	O.S.A.		SENS. MBTH	TOTAL MBTH	E.A.T.		AMB. OD.B.	MIN. CAPACITY MBH	AMB. TEMP. °F	EWT °F	G.P.M.	RUNOUT PIPE SIZES	MAX. WATER PD. FT.	V/PH/CY	BLOWER HP		FLA	LRA	MAX. CRKT. BRK.
								OD.B.	OW.B.													
A/C-1	MECH. 116	1	3330	200	0.625	74.0	81.5	76.2	63.4	95	38.9	24	180.0	5.0	1"	0.5	480/3/60	1.5	3.2	19.7	15	
A/C-2	MECH. 111	1	3330	200	0.625	74.0	81.5	76.2	63.4	95	38.9	24	180.0	5.0	1"	0.5	480/3/60	1.5	3.2	19.7	15	
A/C-3	MECH. 112	1	3330	200	0.625	74.0	81.5	76.2	63.4	95	38.9	24	180.0	5.0	1"	0.5	480/3/60	1.5	3.2	19.7	15	
A/C-4	MECH. 110	1	3330	200	0.625	74.0	81.5	76.2	63.4	95	38.9	24	180.0	5.0	1"	0.5	480/3/60	1.5	3.2	19.7	15	

MARK	LOCATION	TYPE SEE NOTES	INTER- LOCK	CAPACITY MBH	AMB. TEMP. ° F. D.B.	COMPRESSOR MOTOR			CONDENSER FAN MOTOR			EER (MIN.)	MAX. NOISE RATING (DECIBELS)	WIRING MAX. CKT. BRK.	REMARKS		
						NO. OF SPEEDS	RLA/LRA EA.	POWER	NO. OF SPEEDS	FLA/LRA EA.	POWER						
ACCU-1	OUTDOORS	2	A/C-1	81.5	95	1	1	13.3/79.0	480.3/60	1	1	1.6/3.7	480.1/60	12	85	30	
ACCU-2	OUTDOORS	2	A/C-2	81.5	95	1	1	13.3/79.0	480.3/60	1	1	1.6/3.7	480.1/60	12	85	30	
ACCU-3	OUTDOORS	2	A/C-3	81.5	95	1	1	13.3/79.0	480.3/60	1	1	1.6/3.7	480.1/60	12	85	30	
ACCU-4	OUTDOORS	2	A/C-4	81.5	95	1	1	13.3/79.0	480.3/60	1	1	1.6/3.7	480.1/60	12	85	30	

1. VERTICAL DRAIN-THRU DIRECT-EXPANSION AIR-CONDITIONING UNIT COMPLETE WITH COOLING COIL, HOT WATER RE-HEAT COIL, CONDENSATE DRAIN PAN, FAN MOTOR, FILTERS AND CONTROLS. SIDE RETURN AIR CONNECTION AND TOP DISCHARGE. HEAT EXCHANGER UNITS AVAILABLE IN 12, 18, 24, 30, 36, 42, 48, 54, 60, 72, 84, 96, 108, 120, 144, 168, 192, 216, 240, 270, 300, 324, 360, 400, 450, 500, 540, 600, 660, 720, 780, 840, 900, 960, 1080, 1200, 1320, 1440, 1560, 1680, 1800, 1920, 2160, 2400, 2700, 3000, 3240, 3600, 4000, 4500, 5000, 5400, 6000, 6600, 7200, 7800, 8400, 9000, 9600, 10800, 12000, 13200, 14400, 15600, 16800, 18000, 19200, 21600, 24000, 27000, 30000, 32400, 36000, 40000, 45000, 50000, 54000, 60000, 66000, 72000, 78000, 84000, 90000, 96000, 108000, 120000, 132000, 144000, 156000, 168000, 180000, 192000, 216000, 240000, 270000, 300000, 324000, 360000, 400000, 450000, 500000, 540000, 600000, 660000, 720000, 780000, 840000, 900000, 960000, 1080000, 1200000, 1320000, 1440000, 1560000, 1680000, 1800000, 1920000, 2160000, 2400000, 2700000, 3000000, 3240000, 3600000, 4000000, 4500000, 5000000, 5400000, 6000000, 6600000, 7200000, 7800000, 8400000, 9000000, 9600000, 10800000, 12000000, 13200000, 14400000, 15600000, 16800000, 18000000, 19200000, 21600000, 24000000, 27000000, 30000000, 32400000, 36000000, 40000000, 45000000, 50000000, 54000000, 60000000, 66000000, 72000000, 78000000, 84000000, 90000000, 96000000, 108000000, 120000000, 132000000, 144000000, 156000000, 168000000, 180000000, 192000000, 216000000, 240000000, 270000000, 300000000, 324000000, 360000000, 400000000, 450000000, 500000000, 540000000, 600000000, 660000000, 720000000, 780000000, 840000000, 900000000, 960000000, 1080000000, 1200000000, 1320000000, 1440000000, 1560000000, 1680000000, 1800000000, 1920000000, 2160000000, 2400000000, 2700000000, 3000000000, 3240000000, 3600000000, 4000000000, 4500000000, 5000000000, 5400000000, 6000000000, 6600000000, 7200000000, 7800000000, 8400000000, 9000000000, 9600000000, 10800000000, 12000000000, 13200000000, 14400000000, 15600000000, 16800000000, 18000000000, 19200000000, 21600000000, 24000000000, 27000000000, 30000000000, 32400000000, 36000000000, 40000000000, 45000000000, 50000000000, 54000000000, 60000000000, 66000000000, 72000000000, 78000000000, 84000000000, 90000000000, 96000000000, 108000000000, 120000000000, 132000000000, 144000000000, 156000000000, 168000000000, 180000000000, 192000000000, 216000000000, 240000000000, 270000000000, 300000000000, 324000000000, 360000000000, 400000000000, 450000000000, 500000000000, 540000000000, 600000000000, 660000000000, 720000000000, 780000000000, 840000000000, 900000000000, 960000000000, 1080000000000, 1200000000000, 1320000000000, 1440000000000, 1560000000000, 1680000000000, 1800000000000, 1920000000000, 2160000000000, 2400000000000, 2700000000000, 3000000000000, 3240000000000, 3600000000000, 4000000000000, 4500000000000, 5000000000000, 5400000000000, 6000000000000, 6600000000000, 7200000000000, 7800000000000, 8400000000000, 9000000000000, 9600000000000, 10800000000000, 12000000000000, 13200000000000, 14400000000000, 15600000000000, 16800000000000, 18000000000000, 19200000000000, 21600000000000, 24000000000000, 27000000000000, 30000000000000, 32400000000000, 36000000000000, 40000000000000, 45000000000000, 50000000000000, 54000000000000, 60000000000000, 66000000000000, 72000000000000, 78000000000000, 84000000000000, 90000000000000, 96000000000000, 108000000000000, 120000000000000, 132000000000000, 144000000000000, 156000000000000, 168000000000000, 180000000000000, 192000000000000, 216000000000000, 240000000000000, 270000000000000, 300000000000000, 324000000000000, 360000000000000, 400000000000000, 450000000000000, 500000000000000, 540000000000000, 600000000000000, 660000000000000, 720000000000000, 780000000000000, 840000000000000, 900000000000000, 960000000000000, 1080000000000000, 1200000000000000, 1320000000000000, 1440000000000000, 1560000000000000, 1680000000000000, 1800000000000000, 1920000000000000, 2160000000000000, 2400000000000000, 2700000000000000, 3000000000000000, 3240000000000000, 3600000000000000, 4000000000000000, 4500000000000000, 5000000000000000, 5400000000000000, 6000000000000000, 6600000000000000, 7200000000000000, 7800000000000000, 84000000000000

PUMP SCHEDULE												
MARK	SERVICE	MAX. R.P.M.	G.P.M.	MIN. HEAD FT. H <sub>2</sub> O	MIN. MOTOR SIZE H.P.	POWER		PIPING CIRCUIT SERVED	LOCATION	REMARKS		
						VOLTS	PH. CY.				TYPE	
HMP-1	HEATING HOT WATER	1750	20	40	1/2	208	3	60	1	HOT WATER	MECH. ROOM 116	

[illegible]

TYPE: 1. NATURAL GAS-FIRED, COPPER-FINISHED, WATER TUBE, NATURAL-DRAFT HOT WATER PACKAGED BOILER  
NOTES: A) PROVIDE HOT WATER RESET CONTROLS WITH BOILERS WITH A LINEAR RESPONSE TO LOAD SCHEDULE.

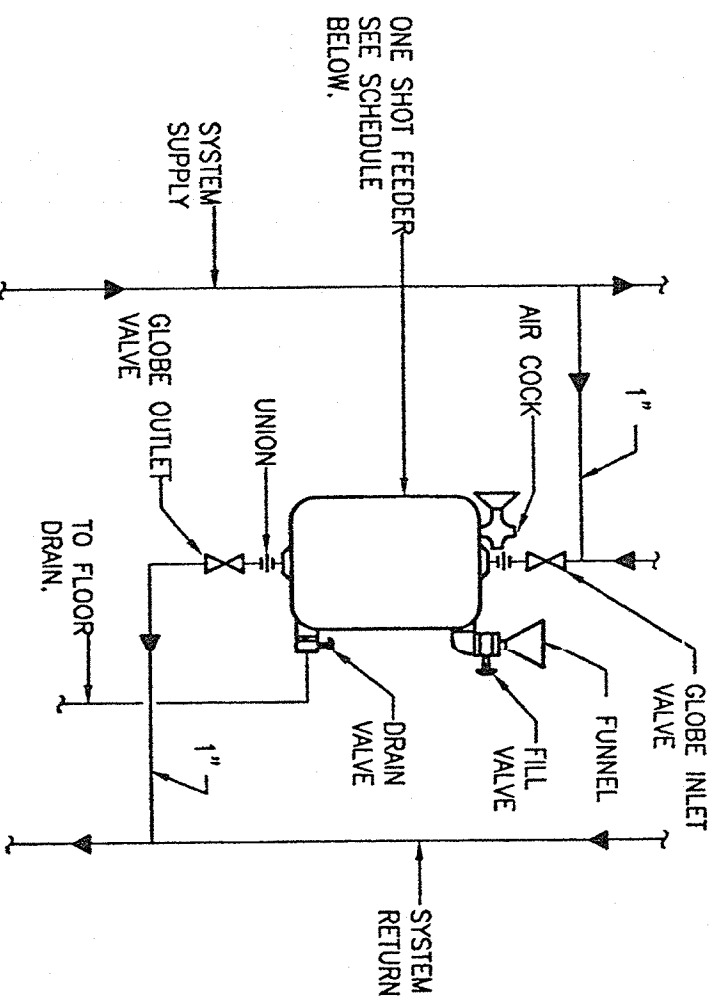
[illegible][illegible]

**NOTE:** SEE PLAN FOR PIPE SIZES.

**TYPICAL ONE SHOT FEEDER DETAIL**

**NOT TO SCALE**

ONE SHOT FEEDER SCHEDULE	
SYSTEM	SIZE GALLONS
HOT WATER SYSTEM	2-1/2



A circular professional seal for Robert L. Young, a Professional Engineer in the State of Alabama. The seal features the text "STATE OF ALABAMA" around the top and "REGISTERED PROFESSIONAL ENGINEER" around the bottom. In the center, it reads "PROFESSIONAL ENGINEER" and "NO. 16179". The name "ROBERT L. YOUNG" is written across the seal, and the date "11/23/05" is stamped over the center.

VIA REGIONAL OFFICE  
345 PERRY HILL ROAD  
MONTGOMERY, ALABAMA