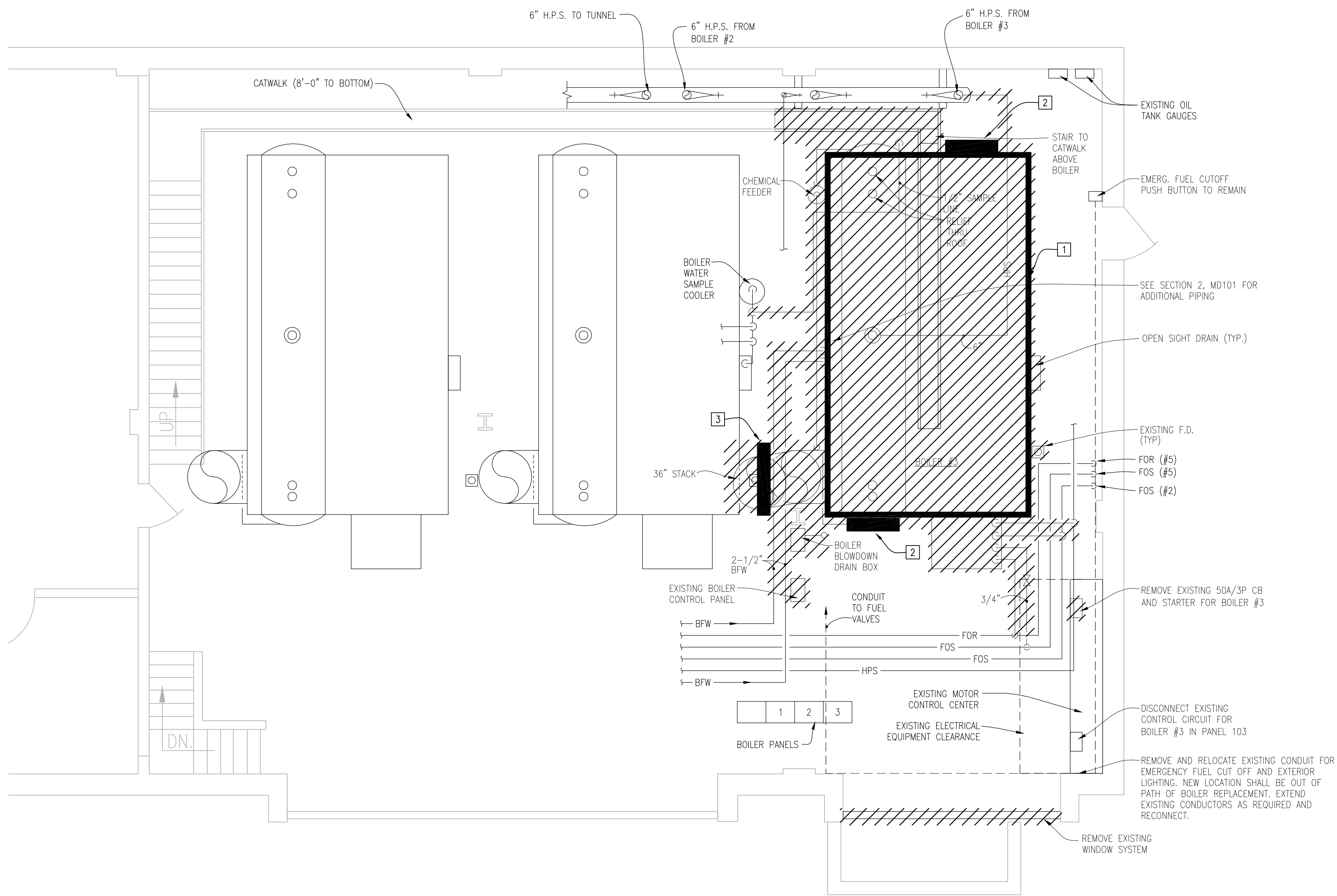


GENERAL NOTES:

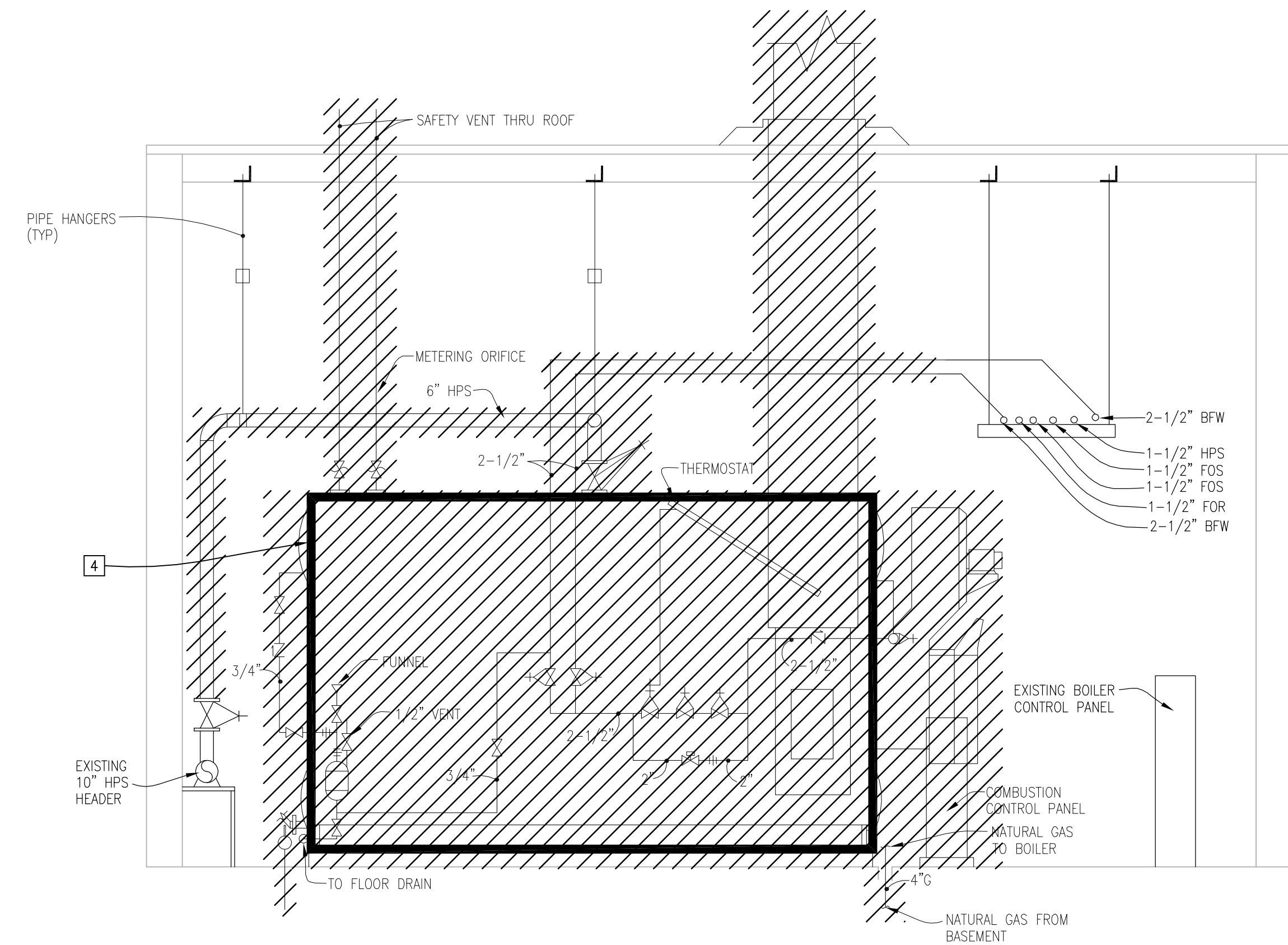
- THIS DRAWING SHOWS ONLY ASBESTOS-CONTAINING MATERIALS (ACM) EXPECTED TO BE IMPACTED BY THE #3 BOILER REPLACEMENT, OTHER MATERIALS IN THE BUILDING MAY CONTAIN ASBESTOS.
- ASBESTOS REMOVAL SHALL BE IN ACCORDANCE WITH SPECIFICATION SECTIONS 028211 AND 028213.13.
- HATCHED EQUIPMENT TO BE REMOVED AS PART OF BOILER #3 DEMOLITION WORK.

KEYED NOTES:

- ASBESTOS CONTAINING, FRIABLE, BOILER INSULATION BENEATH METAL SKIN.
- ASBESTOS CONTAINING, FRIABLE, ACCESS DOOR ROPE GASKET.
- ASBESTOS CONTAINING, FRIABLE, ACCESS DOOR ROPE GASKET.
- PRESUMED ASBESTOS CONTAINING BOILER REFRACTORY AND FIRE BRICK.



1 MECHANICAL ROOM ASBESTOS REMOVAL PLAN (GROUND LEVEL)



2 MECHANICAL ROOM ASBESTOS REMOVAL PLAN (GROUND LEVEL)

		CONSULTANTS:		ARCHITECT/ENGINEERS:		Architect Project No. 003-10099-009		Drawing Title ASBESTOS REMOVAL PLAN		Project Title BOILER REPLACEMENT		Project Number 636-13-102		Office of Construction and Facilities Management	
				LEO A DAILY PLANNING ARCHITECTURE ENGINEERING INTERIORS EST. 1915						Location OMAHA, NE		Building Number 2			
				8600 Indian Hills Drive Omaha, NE 68114-4039 USA Tel 402-391-8111 Fax 402-391-8564				Approved Project Director		Date JUNE 28, 2013		Checked KRC			
Revisions		Date								Name		AD101			