

EFI Global
 10 New England Business
 Center Drive, Suite 105
 Andover, MA 01810
 TEL: (800) 659-1202
 PH: (978) 688-3736
 FAX: (978) 688-6494
 www.efiglobal.com

LEGEND

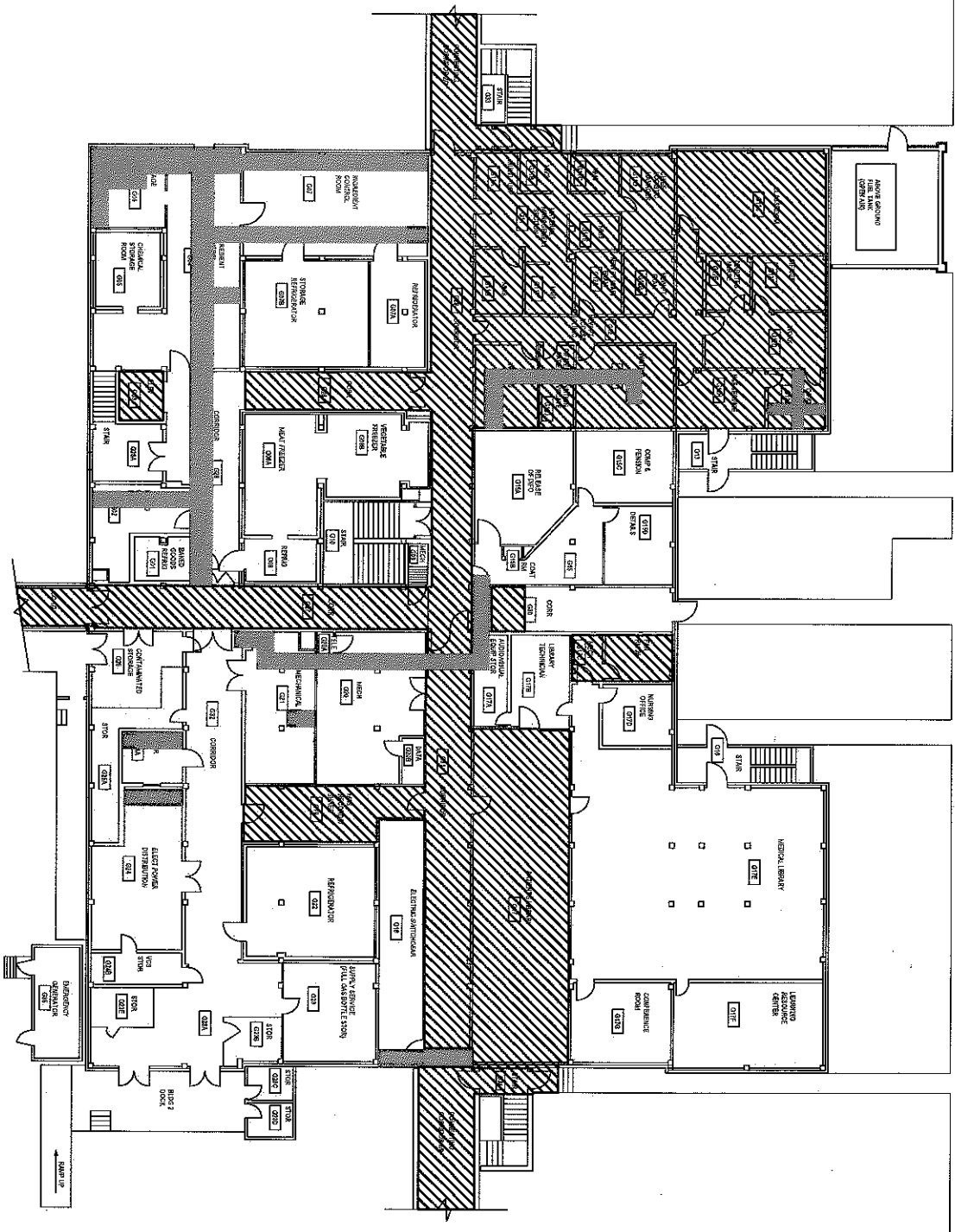
- = ASBESTOS-CONTAINING PIPE INSULATION
- = ASBESTOS-CONTAINING TRANSITE COUNTERTOPS & ASSOCIATED MASTIC
- = ASBESTOS-CONTAINING FLOOR TILE & ASSOCIATED MASTIC
- = ASBESTOS-CONTAINING MUD PACKING ON FIBERGLASS INSULATED PIPE ENDS, VALVES & FLANGES
- = ASBESTOS-CONTAINING TSI DEBRIS

NOTES

1. ASBESTOS-CONTAINING PIPE & PIPE FITTING INSULATION MAY BE CONCEALED BEHIND WALLS, ABOVE CEILINGS & WITHIN MECHANICAL CHASES.
2. ASBESTOS-CONTAINING BLACK TAR COATING IS PRESENT ON FIBERGLASS PIPE & DUCT INSULATION THROUGHOUT BUILDING.
3. PRESUMED ASBESTOS-CONTAINING FIRE DOORS & ELEVATOR DOORS ARE PRESENT THROUGHOUT BUILDING.
4. PRESUMED ASBESTOS-CONTAINING TRANSITE PANELS MAY BE PRESENT BEHIND RADIATORS WITHIN THE BUILDING.
5. ASBESTOS-CONTAINING BLACK WATER PROOFING MASTIC IS PRESENT ON INTERIOR SURFACE OF EXTERIOR WALLS THROUGHOUT BUILDING.

TVHS, ALVIN C. YORK CAMPUS
 ACM LOCATION DRAWING
 BLDG #1, GROUND FLOOR

DATE: OCTOBER 2009
 SCALE: NTS



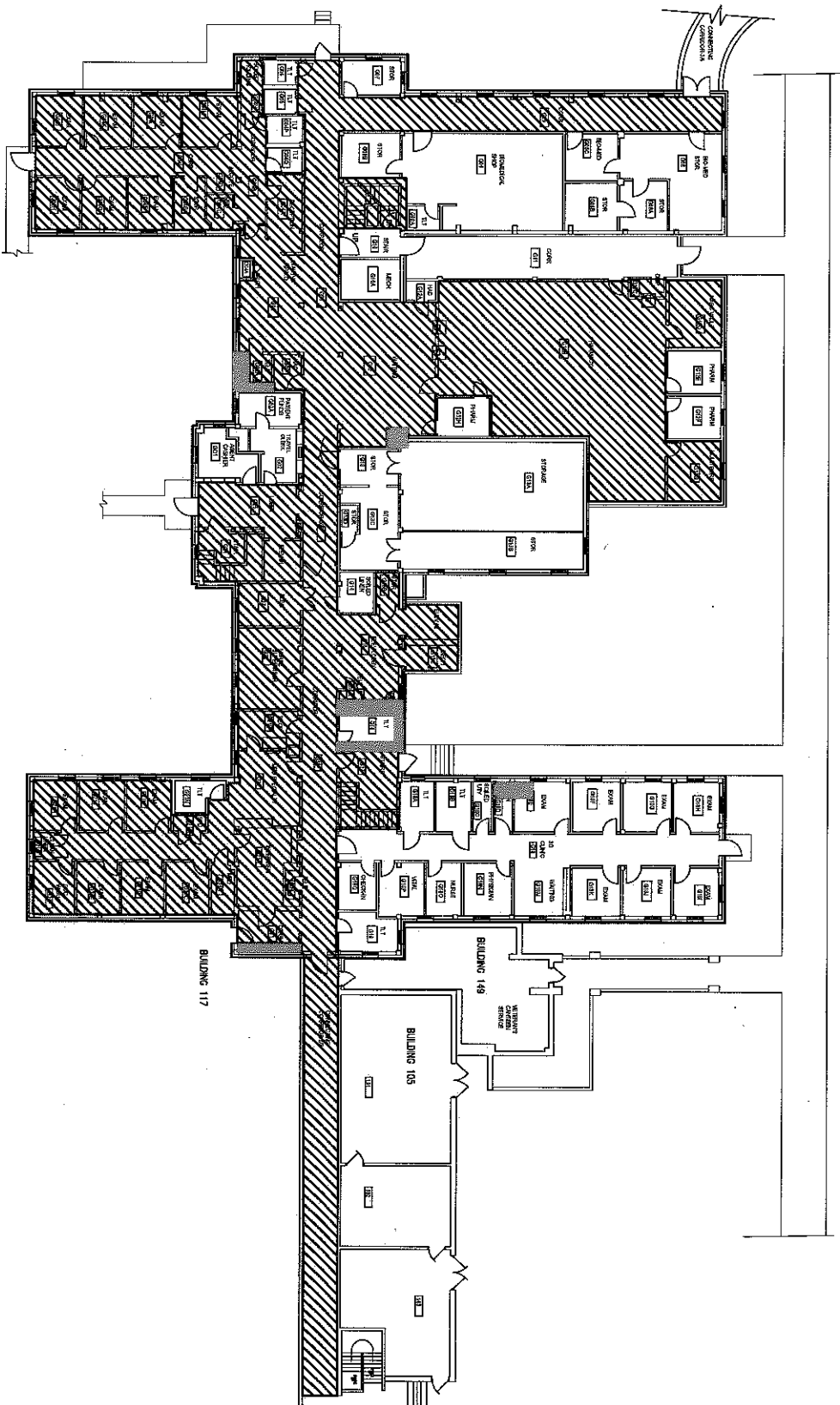
EFI Global
 10 New England Business
 Center Drive, Suite 105
 Andover, MA 01810
 Tel: (800) 659-1202
 PH: (978) 688-3736
 FAX: (978) 688-5494
 Complex Issues • Solid Solutions www.efiglobal.com

- LEGEND**
- = ASBESTOS-CONTAINING PIPE INSULATION
 - = ASBESTOS-CONTAINING FLOOR TILE & ASSOCIATED MASTIC
 - = ASBESTOS-CONTAINING TSI DEBRIS

NOTES



1. ASBESTOS-CONTAINING PIPE & PIPE FITTING INSULATION MAY BE CONCEALED BEHIND WALLS, ABOVE CEILINGS & WITHIN MECHANICAL CHASES.
2. PRESUMED ASBESTOS-CONTAINING FIRE DOORS & ELEVATOR DOORS ARE PRESENT THROUGHOUT BUILDING.
3. PRESUMED ASBESTOS-CONTAINING TRANSITE PANELS MAY BE PRESENT BEHIND RADIATORS WITHIN THE BUILDING.

TVHS, ALVIN C. YORK CAMPUS
 ACM LOCATION DRAWING
 BLDG #2, GROUND FLOOR
 DATE: OCTOBER 2009
 SCALE: NTS



EFI Global
 10 New England Business
 Center Drive, Suite 105
 Andover, MA 01810
 Tel: (978) 655-1202
 Fax: (978) 655-3735
 Fax: (978) 655-5494
 Complex Issues • Solid Solutions
www.efiglobal.com

LEGEND

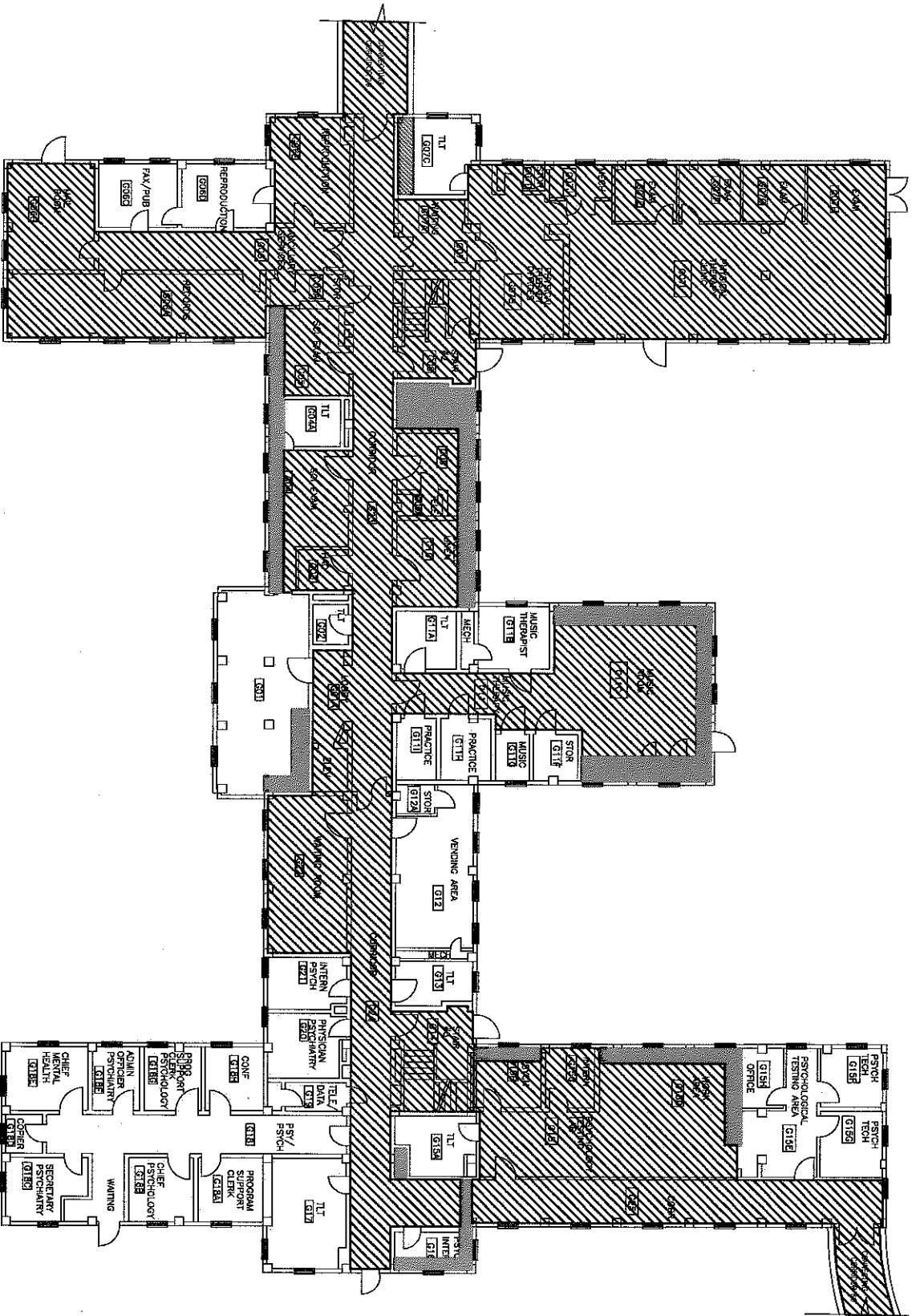
-  = ASBESTOS-CONTAINING PIPE & PIPE FITTING INSULATION
-  = ASBESTOS-CONTAINING FLOOR TILE & ASSOCIATED MASTIC

NOTES

1. ASBESTOS-CONTAINING PIPE & PIPE FITTING INSULATION MAY BE CONCEALED BEHIND WALLS, ABOVE CEILINGS & WITHIN MECHANICAL CHASES WITHIN BUILDING.
2. PRESUMED ASBESTOS-CONTAINING FIRE DOORS & ELEVATOR DOORS ARE PRESENT THROUGHOUT BUILDING.
3. PRESUMED ASBESTOS-CONTAINING TRANSITE PANELS MAY BE PRESENT BEHIND RADIATORS WITHIN THE BUILDING.




TVHS, ALVIN C. YORK CAMPUS
 ACM LOCATION DRAWING
 BLDG #3, GROUND FLOOR

DATE: OCTOBER 2009
 SCALE: NTS



EFI Global
 10 New England Business
 Center Drive, Suite 105
 Andover, MA 01810
 Tel: (800) 659-1202
 PH: (978) 688-3736
 FAX: (978) 688-5494
 Complex Issues • Solid Solutions www.efiglobal.com

LEGEND

-  = ASBESTOS-CONTAINING PIPE INSULATION
-  = ASBESTOS-CONTAINING FLOOR TILE & ASSOCIATED MASTIC
-  = ASBESTOS-CONTAINING PIPE FITTING INSULATION

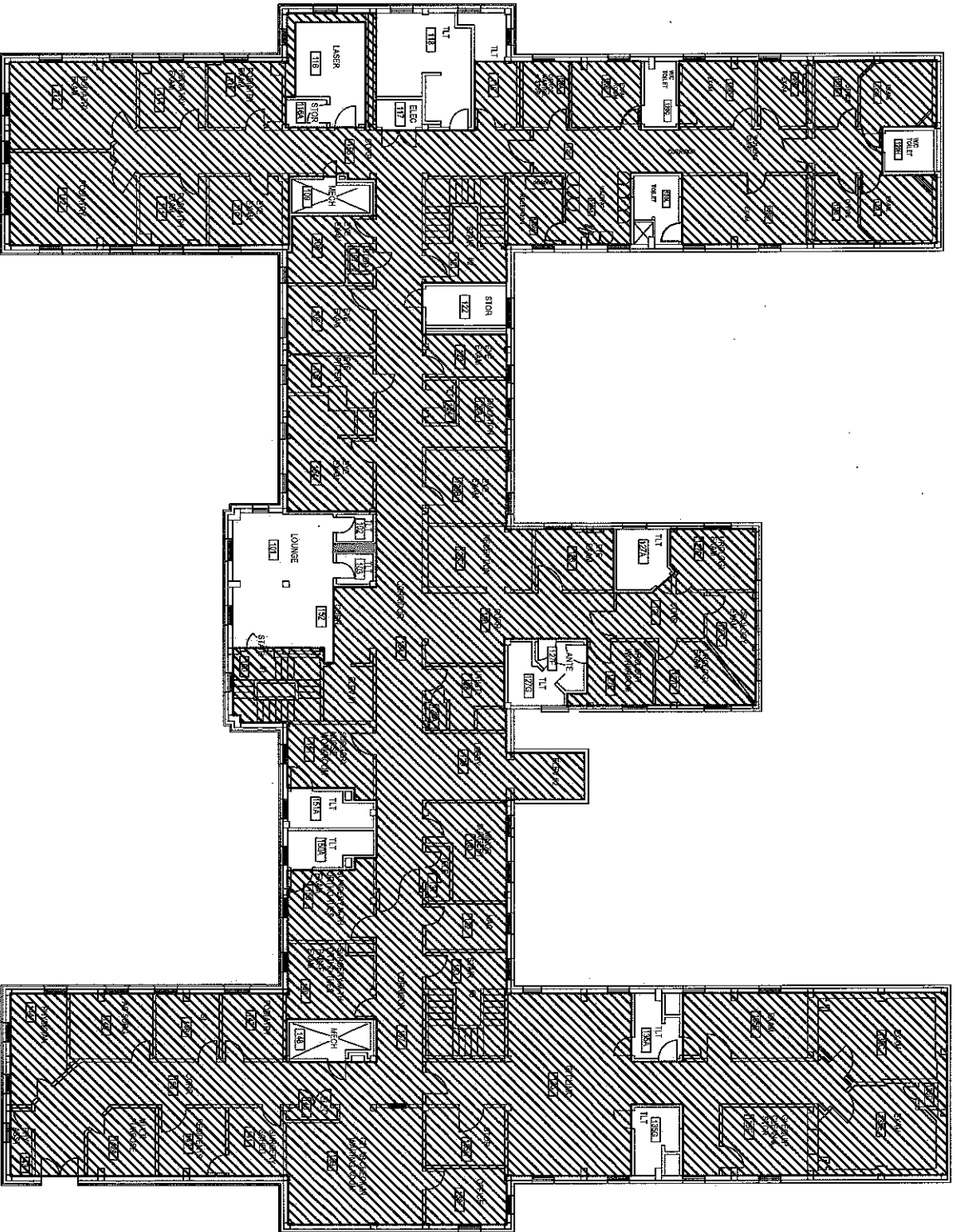
NOTES

1. ASBESTOS-CONTAINING PIPE & PIPE FITTING INSULATION MAY BE CONCEALED BEHIND WALLS, ABOVE CEILINGS & WITHIN MECHANICAL CHASES.
2. PRESUMED ASBESTOS-CONTAINING TRANSITE PANELS MAY BE PRESENT BEHIND RADIATORS WITHIN THE BUILDING.
3. ASBESTOS-CONTAINING BLACK TAR COATING IS PRESENT ON FIBERGLASS PIPE & DUCT INSULATION THROUGHOUT BUILDING.
4. PRESUMED ASBESTOS-CONTAINING FIRE DOORS & ELEVATOR DOORS ARE PRESENT THROUGHOUT BUILDING.

TVHS, ALVIN C. YORK CAMPUS
 ACM LOCATION DRAWING
 BLDG #9, GROUND FLOOR

DATE: OCTOBER 2009

SCALE: NTS



NOTES

1. ASBESTOS-CONTAINING PIPE & PIPE FITTING INSULATION MAY BE CONCEALED BEHIND WALLS, ABOVE CEILINGS & WITHIN MECHANICAL CHASES WITHIN BUILDING.
2. PRESUMED ASBESTOS-CONTAINING FIRE DOORS & ELEVATOR DOORS ARE PRESENT THROUGHOUT BUILDING.
3. PRESUMED ASBESTOS-CONTAINING TRANSITE PANELS MAY BE PRESENT BEHIND RADIATORS WITHIN THE BUILDING.

LEGEND

- = ASBESTOS-CONTAINING PIPE & PIPE FITTING INSULATION
- ▨ = ASBESTOS-CONTAINING FLOOR TILE & ASSOCIATED MASTIC

EFI Global

10 New England Business Center Drive, Suite 105 Andover, MA 01810

TF: (800) 659-1202
PH: (978) 688-3736
FAX: (978) 688-5494
www.efiglobal.com

Complex Issues • Solid Solutions

TVHS, ALVIN C. YORK CAMPUS
ACM LOCATION DRAWING
BLDG #3, 1ST FLOOR

DATE: OCTOBER 2009
SCALE: NTS