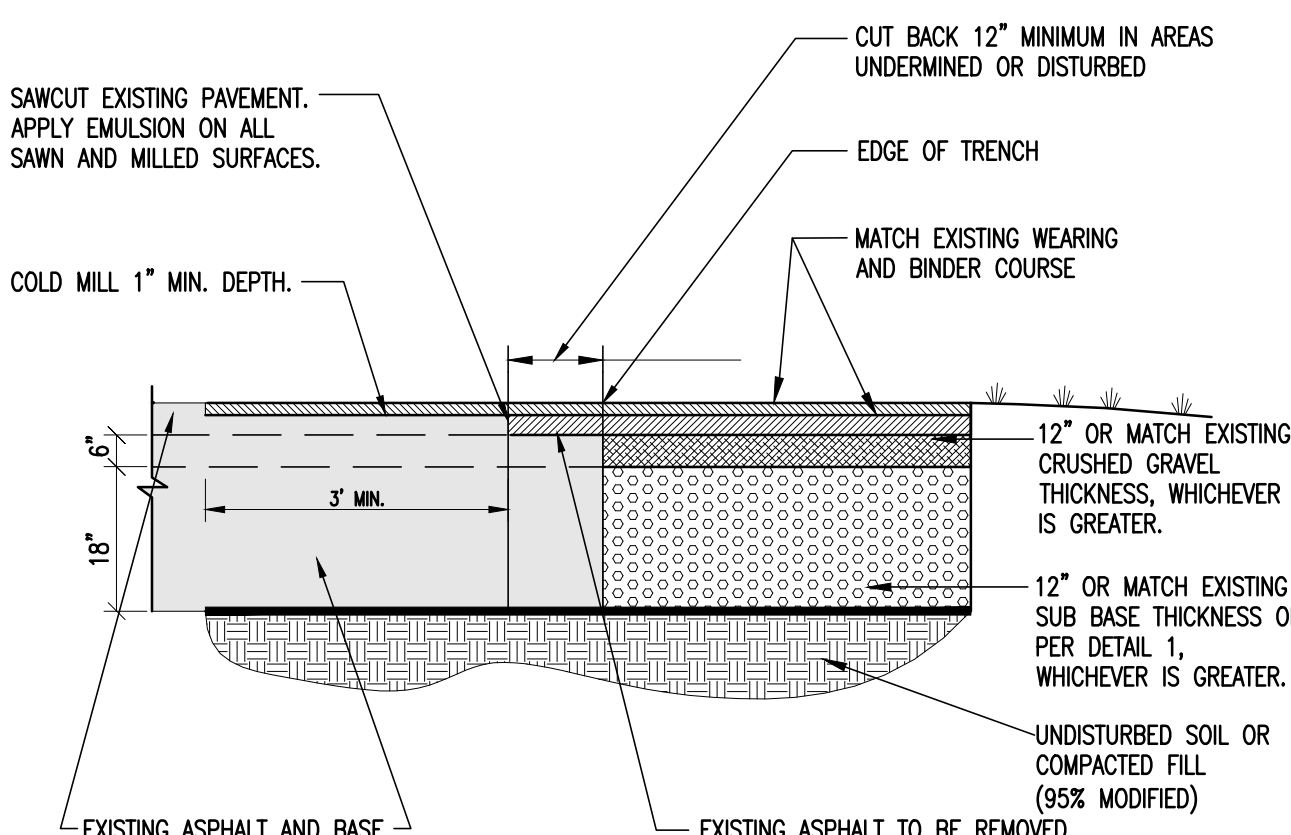


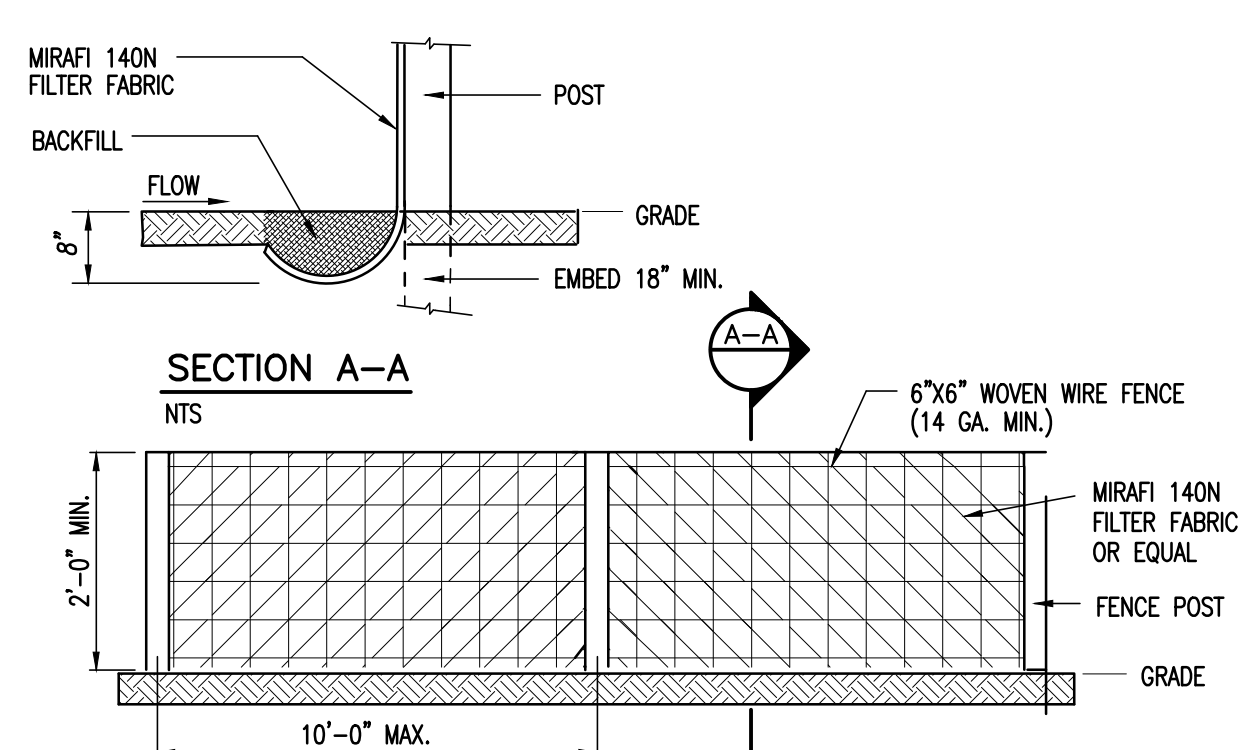
STORM SEWER / CULVERT TRENCH DETAIL

SCALE: NONE



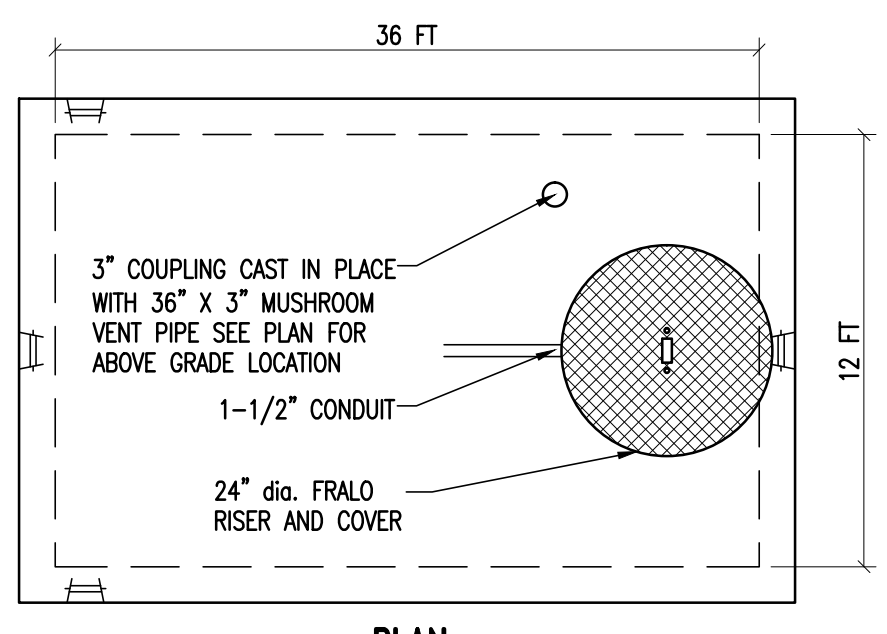
ASPHALT PAVEMENT PATCH DETAIL

SCALE: NONE

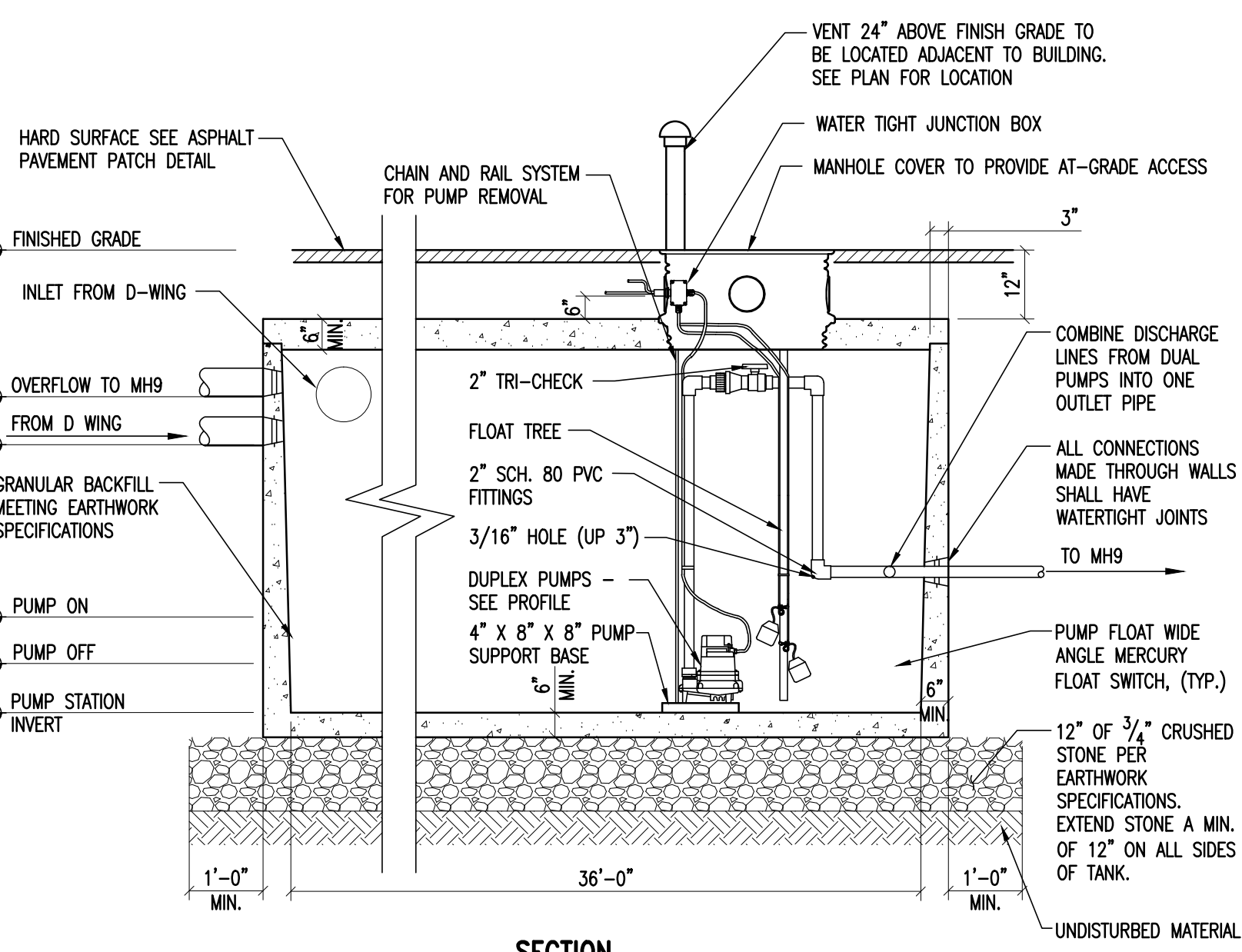


SILT FENCE

SCALE: NONE



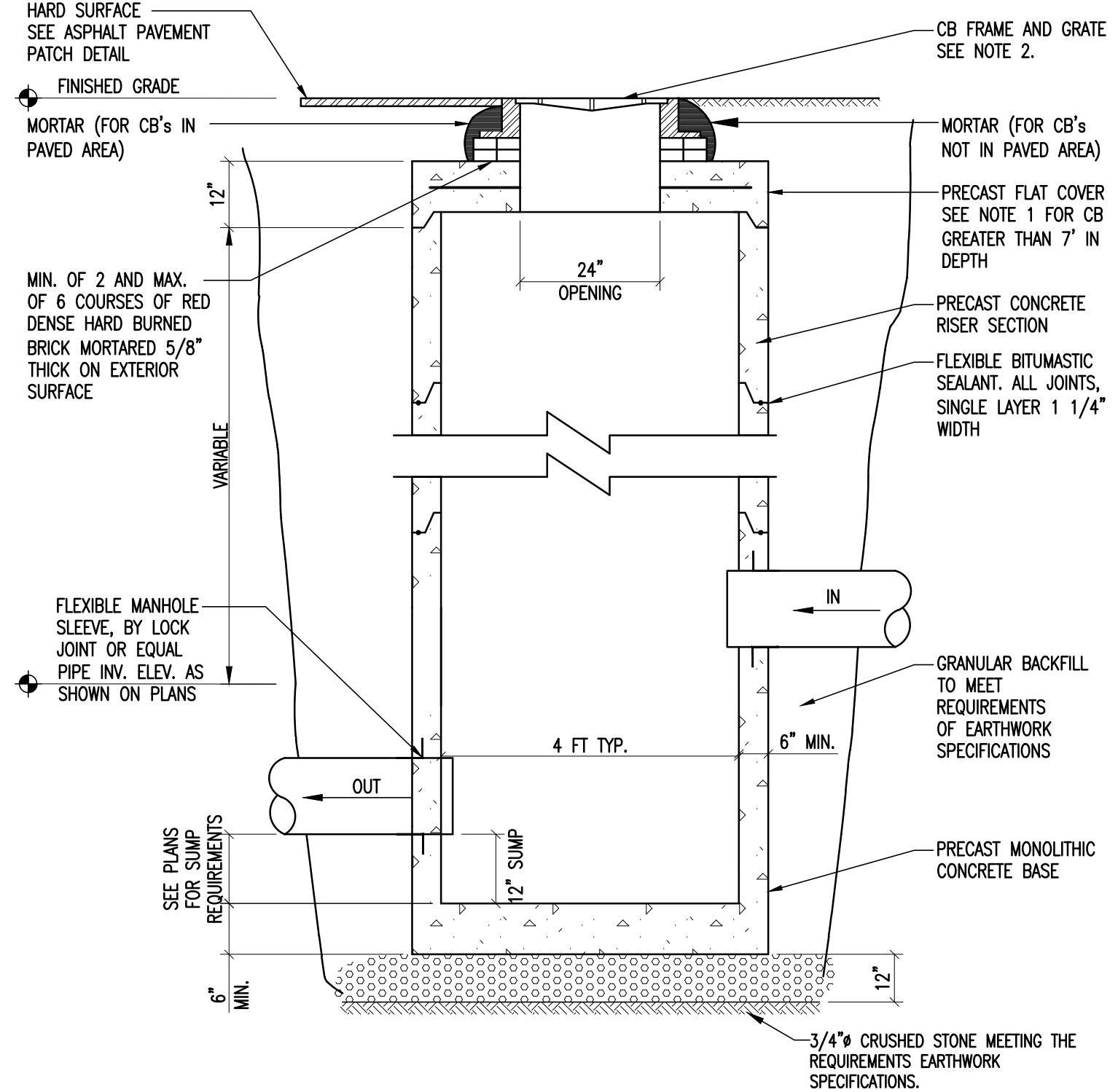
PLAN



SECTION

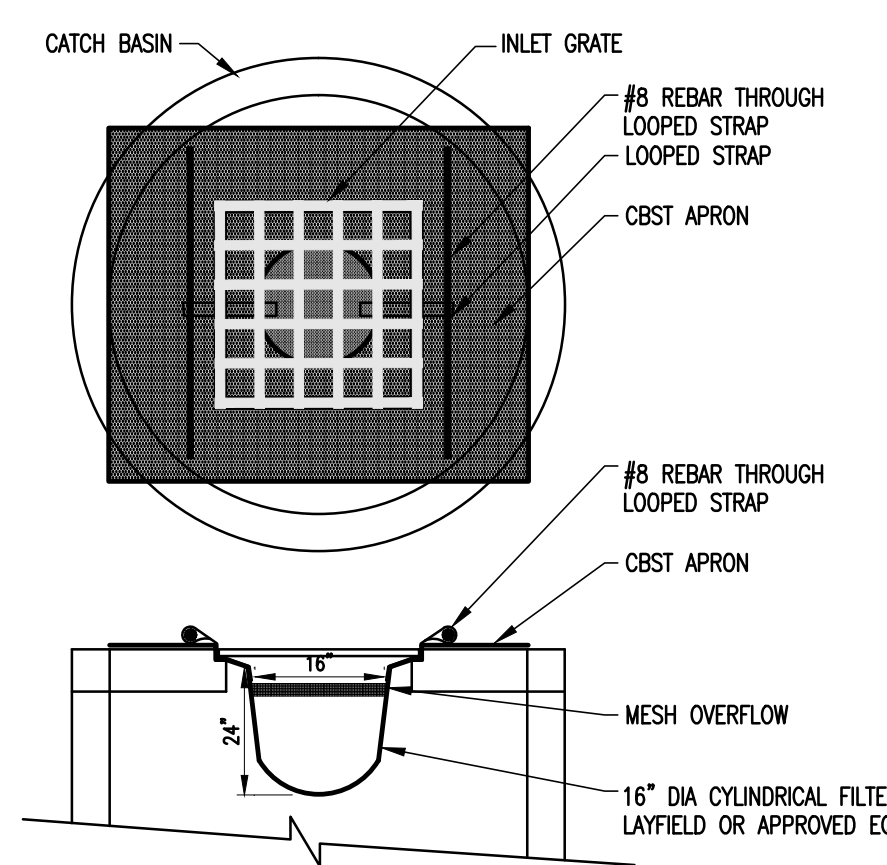
STORAGE TANK/PUMP STATION DETAIL

SCALE: NONE



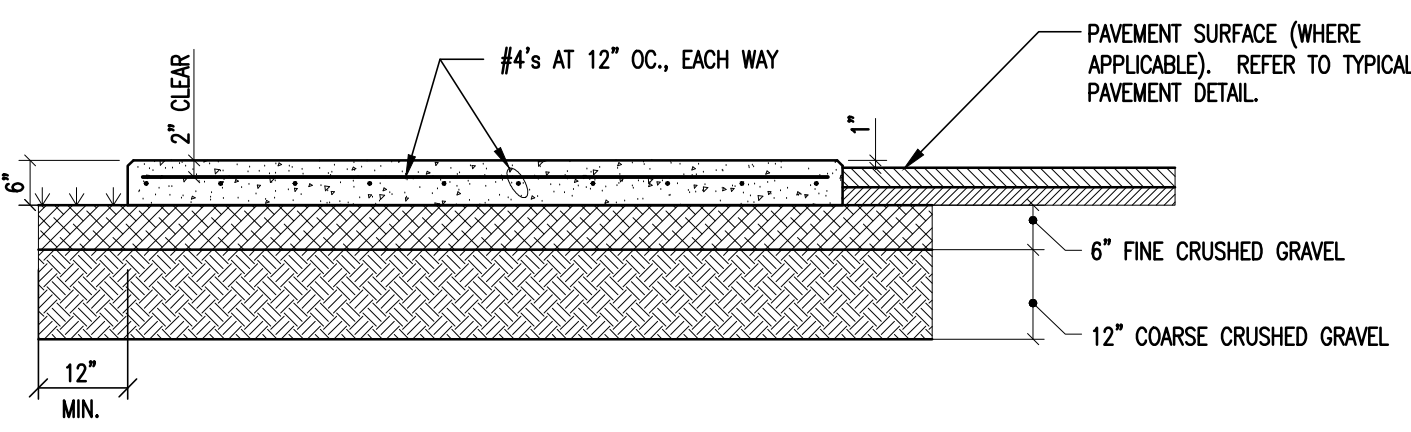
CATCH BASIN DETAIL

SCALE: NONE



TEMPORARY INLET CATCH BASIN PROTECTION DETAIL

SCALE: NONE



EXTERIOR CONCRETE PAD DETAIL

SCALE: NONE

EARTHWORK NOTES

1. PRIOR TO THE START OF WORK, A PRE-CONSTRUCTION MEETING WILL BE HELD WITH THE CONTRACTOR, OWNER, AND PROJECT ENGINEER TO REVIEW PROCEDURES AND IDENTIFY RESPONSIBILITIES, UNLESS STATED OTHERWISE, ALL MATERIALS AND METHODS SHALL BE IN ACCORDANCE WITH THE MOST RECENT VERSION OF THE NYS DOT SPECIFICATIONS.
2. CLEARING AND GRUBBING- SITE TO BE RESTORED TO PRE-CONSTRUCTION CONDITIONS, INCLUDING DRIVEWAYS, STONE WALLS, AND GRASS AREAS. THE DRIVEWAY SUB-GRADE MATERIAL SHALL EXTEND ONE FOOT BEYOND THE EDGE OF PAVING.
3. COMPACTION OF ALL MATERIALS SHALL BE PERFORMED USING VIBRATORY ROLLERS AND WATER IN LIFTS OF NO GREATER THAN TWELVE INCHES. COMPACTION SHALL BE PERFORMED UNTIL THE REQUIRED DENSITY IS ACHIEVED. DENSITY SHALL BE DETERMINED BY ASTM D2922 AND SHALL NOT BE LESS THAN THE REQUIRED AMOUNT AS DETERMINED IN ACCORDANCE WITH ASTM D1557.
4. COMPACTION TESTING SHALL BE PERFORMED FOR EVERY LAYER OF MATERIAL PLACED AND FOR EVERY 1000 SQUARE FEET OF AREA.
5. PAVEMENT SHALL MEET THE LATEST EDITION OF THE "STANDARD SPECIFICATIONS FOR CONSTRUCTION" AS PUBLISHED BY NYS DOT.
6. PAVEMENT SHALL NOT BE INSTALLED WHEN THE OUTSIDE AIR TEMPERATURE IS BELOW 40 DEGREES FAHRENHEIT, NOR WHEN THE ROAD BASE TEMPERATURE IS BELOW 40 DEGREES FAHRENHEIT. PAVEMENT SHALL NOT FALL BELOW 185 DEGREES FAHRENHEIT PRIOR TO THE COMPLETION OF ROLLING. PAVEMENT SHALL NOT BE INSTALLED WHEN THE SUBGRADE IS FROZEN OR THE GRADES ARE INCORRECT.
7. ALL REMAINING DISTURBED AREAS SHALL BE FERTILIZED AND SEEDING IN ACCORDANCE WITH APPLICABLE STATE SPECIFICATIONS FOR EROSION CONTROL.
8. THE SEEDING OF 10% OR GREATER SLOPES SHALL REQUIRE THE USE OF EROSION CONTROL MATING.
9. ALL EARTHWORK MATERIALS SHALL BE OBTAINED FROM APPROVED SOURCES. THEY SHALL CONSIST OF SATISFACTORILY GRADED, FREE DRAINING MATERIAL, REASONABLY FREE FROM LOAM, SILT, CLAY AND ORGANIC MATERIAL. EARTHWORK MATERIALS SHALL MEET THE REQUIREMENTS OF THE FOLLOWING TABLES:

A. SAND BLANKET/BEDDING:	SIEVE DESIGNATION	PERCENT BY WEIGHT PASSING SQUARE MESH SIEVES
	2 INCHES	100
	1-1/2 INCHES	90 - 100
	1/2 INCH	70 - 100
	NO. 4	60 - 100
	NO. 100	0 - 20
	NO. 200	0 - 8

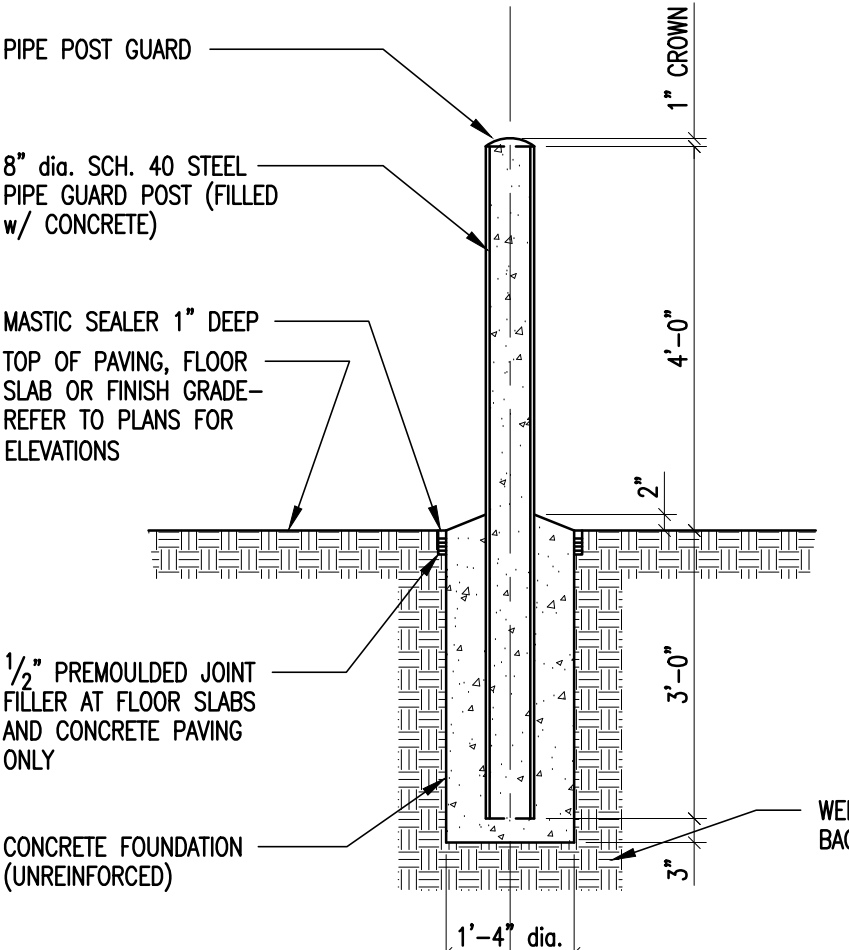
B. 3/4\" CRUSHED STONE:	SIEVE DESIGNATION	PERCENT BY WEIGHT PASSING SQUARE MESH SIEVES
	3 INCH	100
	3/4 INCHES	90 - 100
	3/8 INCH	20 - 55
	NO. 4	0 - 10
	NO. 8	0 - 5

C. FINE CRUSHED GRAVEL:	SIEVE DESIGNATION	PERCENT BY WEIGHT PASSING SQUARE MESH SIEVES
	2 INCHES	100
	1 1/2 INCHES	90 - 100
	NO. 4	30 - 60
	NO. 100	0 - 12
	NO. 200	0 - 6

D. GRANULAR BACKFILL:	SIEVE DESIGNATION	PERCENT BY WEIGHT PASSING SQUARE MESH SIEVES
	3 INCHES	100
	NO. 4	45 - 75
	NO. 100	0 - 12
	NO. 200	0 - 6

E. TOPSOIL SHALL MEET THE FOLLOWING REQUIREMENTS UNLESS OTHERWISE SPECIFICALLY STATED IN THE CONTRACT DOCUMENTS:		
1. THE PH OF THE MATERIAL SHALL BE BETWEEN 5.5 AND 7.8.		
2. THE ORGANIC CONTENT SHALL BE NOT LESS THAN 2% NOR MORE THAN 20%.		
3. GRADATION:	SIEVE DESIGNATION	PERCENT BY WEIGHT PASSING SQUARE MESH SIEVES
	2 INCHES	85 - 100
	1 INCH	65 - 100
	1/4 INCH	65 - 100
	NO. 200	20 - 80

THE CONTRACTOR MAY AMEND NATURAL TOPSOIL WITH APPROVED MATERIALS AND BY APPROVED METHODS TO MEET THE ABOVE SPECIFICATIONS.



NOTES:
1.) REFER TO PLAN FOR LOCATIONS.

BOLLARD DETAIL

SCALE: NONE

TANK VOLUME		DATE		CONSULTANTS:		ARCHITECT/ENGINEERS:		Drawing Title		Project Title		Project Number		Office of Construction and Facilities Management	
				Hyman Hayes		Sigma Psi Consulting		STORMWATER DETAILS		RENOVATE FOR STERILE PROCESSING SERVICE (SPS)		VA 528A8-08-847		Office of Construction and Facilities Management	
				ENGINEERING VENTURES PC		Mechanical, Electrical, Plumbing Engineers, PLLC				Stratton VA Medical Center		Building Number 1		Department of Veterans Affairs	
				Adelaide				Approved Project Director		Location Albany, New York		Drawing Number C3.0			
										Date 08-21-2013		Checked PB		Drawn ST	
												Dwg. 2 of 88			