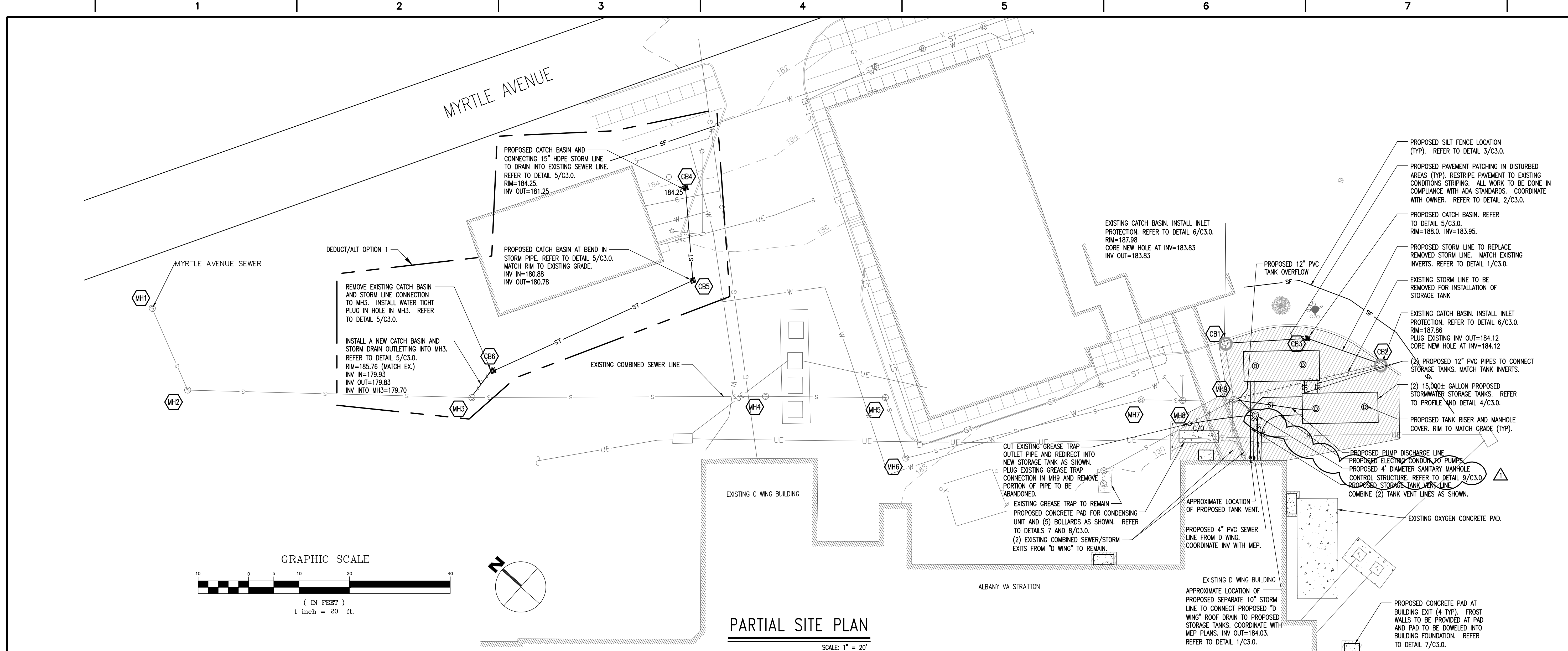


three inches = one foot  
one and one half inches = one foot  
one inch = one foot  
three quarters inch = one foot  
one half inch = one foot  
three eighths inch = one foot  
one quarter inch = one foot  
one eighth inch = one foot



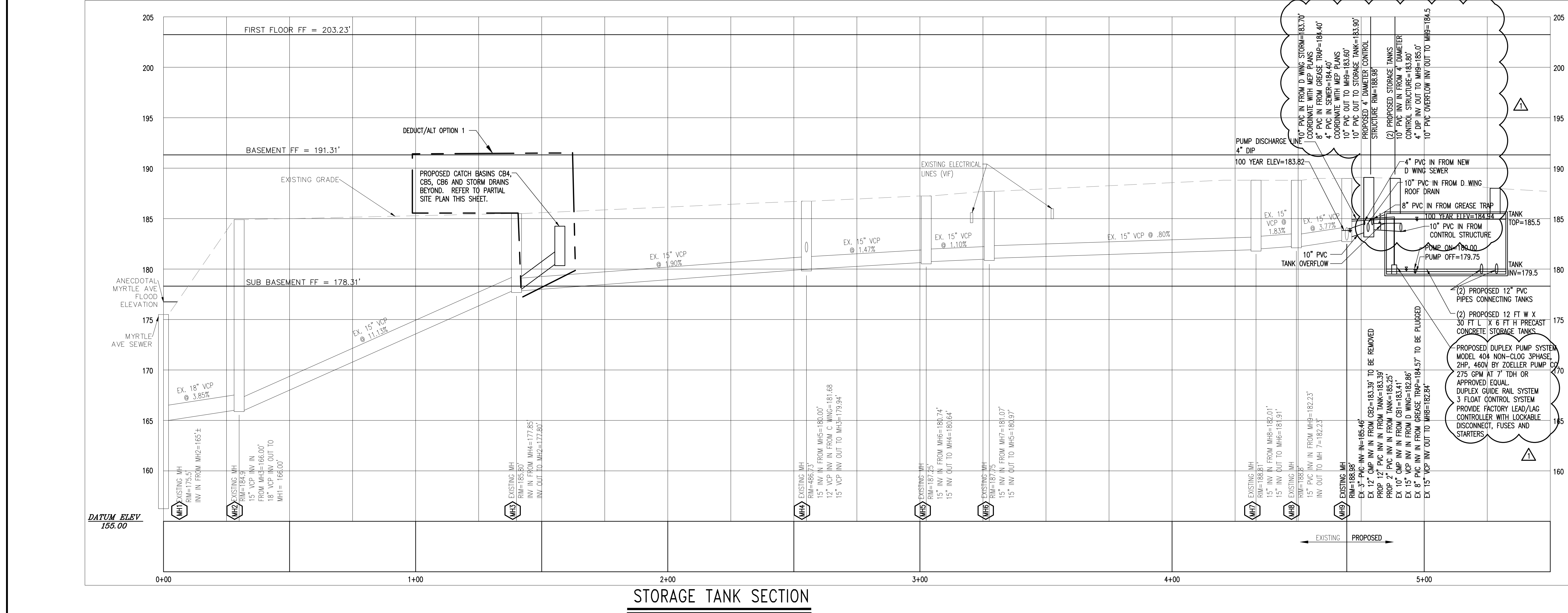
LEGEND	
EXISTING FEATURES	PROPOSED FEATURES
	MANHOLE
	CLEAN OUT
	CATCH BASIN
	BOLLARD
	STORM MANHOLE
	TAPPING SLEEVE AND VALVE
	GATE VALVE
	HYDRANT
	WATER SHUT OFF
	LIGHT POLE
	UTILITY POWER POLE
	HANDICAP SYMBOL
	SIGN
	SPOT ELEVATION
	CONTOUR
	FENCE
	PROPERTY LINE
	SILT FENCE
	SANITARY SEWER LINE
	STORM LINE
	WATER LINE
	UNDERGROUND ELECTRIC
	OVERHEAD ELECTRIC
	UNDERGROUND TELEPHONE
	EDGE OF PAVEMENT
	TREE
	INLET PROTECTION
	VERIFY IN FIELD

**SURVEY NOTES**

- TOPOGRAPHIC AND PLANIMETRIC DATA TAKEN FROM HISTORIC MAPPING OF THE ALBANY STRATTON VA. ALL INFORMATION SHOWN IS APPROXIMATE. CONTRACTOR TO VERIFY IN FIELD.
- PROPERTY LINES, BUILDINGS, AND ALL SURFACE FEATURES DEPICTED HEREON ARE APPROXIMATE ONLY. VERIFY ALL LOCATIONS IN FIELD. COORDINATE WITH OWNER.
- UTILITIES SHOWN DO NOT PURPORT TO CONSTITUTE OR REPRESENT ALL UTILITIES LOCATED UPON OR ADJACENT TO THE SURVEYED PREMISES. EXISTING UTILITY LOCATIONS ARE APPROXIMATE ONLY. THE CONTRACTOR SHALL FIELD VERIFY ALL UTILITY CONFLICTS. ALL DISCREPANCIES SHALL BE REPORTED TO THE ARCHITECT, OWNER, AND ENGINEER. THE CONTRACTOR SHALL CONTACT DIG SAFE AND ANY NECESSARY PRIVATE UTILITY LOCATORS A MINIMUM OF 48 HOURS PRIOR TO ANY CONSTRUCTION.

**CONSTRUCTION NOTES**

- WORK CAUSING VIBRATION MAY NOT OCCUR BEFORE 4PM
- COORDINATE TEMPORARY ROAD AND DRIVEWAY CLOSURE WITH THE VA.
- NOISE PRODUCING ACTIVITIES MUST STOP AFTER 10 PM OR BE IN COMPLIANCE WITH CITY OF ALBANY NOISE ORDINANCE. ALL NOISE PRODUCING WORK SHALL BE SCHEDULED AND COORDINATED WITH THE VA.



<b>NEW CONTROL STRUCTURE</b> REVISED INV., NEW PUMP		<b>CONSULTANTS:</b> <b>Hyma &amp; Hayes</b> 1511 Route 22 - Suite C-24 Brewster, New York 10509 p: 845.278.7710 f: 845.278.7750 adelaidelc.com		<b>ARCHITECT/ENGINEERS:</b> <b>Sigma Psi Consulting</b> Mechanical, Electrical, Plumbing Engineers, PLLC 4 Collamer Road, Malta, NY 12020 PH (518) 581-9428 FX (518) 580-9325		<b>Drawing Title</b> SITE PLAN AND PROFILE		<b>Project Title</b> RENOVATE FOR STERILE PROCESSING SERVICE (SPS) Stratton VA Medical Center		<b>Project Number</b> VA 528A8-08-847		<b>Office of Construction and Facilities Management</b>	
<b>Revisions</b>		<b>Adelaide</b> Environmental Health Associates, Inc.				<b>Approved Project Director</b>		<b>Location</b> Albany, New York		<b>Building Number</b> 1		<b>Department of Veterans Affairs</b>	
<b>Date</b>		<b>Date</b>		<b>Date</b>		<b>Date</b>		<b>Date</b>		<b>Dwg. 1 of 88</b>			