

Iowa City VA Healthcare System
400 Car Parking Garage

Description of Deductive Alternates

Deduct Alternate 2

Sketches and a new specification section relating to Deduct Alternate 2 follow this page.

Item 1 Division 07 - Thermal and Moisture Protection

Delete Section 07 52 16 and Add Section 07 53 23
Change roofing to EPDM, contractor to select and propose manufacturer.

Item 2 Division 03 - Concrete

Delete curtain wall at North East exit stair enclosure and replace with concrete
See structural sketch: S-SK- 1 10.1.13 thru S-SK-7 10.1.13 for additional information.

Item 3 Division 11 - Equipment

Delete roof tie offs for window washing at the North East exit stair enclosure.

Item 4 Division 23 - Heating, Ventilating and Air Conditioning

Delete roof top exhaust fan at North East exit stair and associated conduit.

Item 5 Division 8 - Openings

Delete 2 hollow metal doors, 1-ST-02 and 2-ST-02, to be deleted.

Item 6 Division 8 - Openings

Delete automatic door operators at 3 levels doors: 2-ST-01, 3-ST-01 and 4-ST-01.
Rough in electric for the future installation of the door operators.

SECTION 07 53 23
ETHYLENE-PROPYLENE-DIENE-MONOMER ROOFING

PART 1 GENERAL

1.1 DESCRIPTION

- A. Ethylene Propylene Diene Monomer (EPDM) sheet roofing adhered to roof deck.

1.2 RELATED WORK

- A. Treated wood framing, blocking, and nailers: Section 06 10 00, ROUGH CARPENTRY.
- B. Roof Insulation: Section 07 22 00, ROOF AND DECK INSULATION.
- C. Metal cap flashings, copings, fascias, and expansion joints: Section 07 60 00, FLASHING AND SHEET METAL.
- D. Equipment supports and gravity ventilators: Section 07 72 00, ROOF ACCESORIES.
- E. Mechanical equipment supports: Section 23 34 00, HVAC FANS and Section 23 37 00, AIR OUTLETS AND INLETS.

1.3 QUALITY ASSURANCE

- A. Approved applicator by the membrane roofing system manufacturer, and certified by the manufacturer as having the necessary expertise to install the specific system.
- B. Pre-Roofing Meeting:
 - 1. Upon completion of roof deck installation and prior to any roofing application, hold a pre-roofing meeting arranged by the Contractor and attended by the Roofing Inspector, Material Manufacturers Technical Representative, Roofing Applicator, Contractor, and Resident Engineer,
 - 2. Discuss specific expectations and responsibilities, construction procedures, specification requirements, application, environmental conditions, job and surface readiness, material storage, and protection.
 - 3. Inspect roof deck at this time to:
 - a. Verify that work of other trades which penetrates roof deck is completed.
 - b. Determine adequacy of deck anchorage, presence of foreign material, moisture and unlevel surfaces, or other conditions that would prevent application of roofing system from commencing or cause a roof failure.

- c. Examine samples and installation instructions of manufacturer.
- d. Perform pull out test of fasteners (See paragraph 3.2).

1.4 SUBMITTALS

- A. Submit in accordance with Section 01 33 23, SHOP DRAWINGS, PRODUCT DATA, AND SAMPLES.
- B. Applicators approval certification by manufacturer.
- C. Shop Drawings:
 - 1. Sheet membrane layout.
 - 2. Fastener pattern, layout, and spacing requirements.
 - 3. Termination details.
- D. Manufacturers installation instructions revised for project.
- E. Samples:
 - 1. Sheet membrane: One 150 mm (6 inch) square piece.
 - 2. Sheet flashing: One 150 mm (6 inch) square piece.
 - 3. Fasteners: Two, each type.
 - 4. Welded seam: Two 300 mm (12 inch) square samples of welded seams to represent quality of field welded seams.

1.5 DELIVERY, STORAGE AND HANDLING

- A. Deliver, store, and handle materials as specified by manufacturer.
- B. Store volatile materials separate from other materials with separation to prevent fire from damaging the work, or other materials.

1.6 WARRANTY

Roofing work subject to the terms of the Article "Warranty of Construction", FAR clause 52.246-21, except extend the warranty period to five years.

1.7 APPLICABLE PUBLICATIONS

- A. Publications listed below form a part of this specification to the extent referenced. Publications are referenced in the text by the basic designation only.
- B. American Society for Testing and Materials (ASTM):
 - A167-99(R2009).....Stainless and Heat-Resisting Chromium-Nickel Steel Plate, Sheet and Strip
 - B209-07.....Aluminum and Aluminum-Alloy Sheet and Plate
 - D751-06.....Coated Fabrics
 - D2103-10.....Polyethylene Film and Sheeting
 - D2240-05(R2010).....Rubber Property - Durometer Hardness
 - D3884-09.....Abrasive Resistance of Textile Fabrics (Rotary Platform, Double-Head Method)

D4637-10.....EPDM Sheet Used in Single-Ply Roof Membrane
 D4586-07.....Asphalt Roof Cement, Asbestos Free
 E96-10.....Water Vapor Transmission of Materials
 E108-10.....Fire Tests of Roof Coverings
 G21-09.....Resistance of Synthetic Polymeric Materials to

Fungi

C. National Roofing Contractors Association (NRCA):

Fifth Edition - 05.....The NRCA Roofing and Waterproofing Manual.

D. Federal Specifications (Fed. Spec.)

FF-S-107C(2).....Screws, Tapping and Drive

FF-S-111D(1).....Screw, Wood

UU-B-790A.....Building Paper, Vegetable Fiber (Kraft,
 Waterproofed, Water Repellent and Fire
 Resistant)

E. Factory Mutual Engineering and Research Corporation (FM):

Annual Issue.....Approval Guide Building Materials

F. Underwriters Laboratories, Inc (UL):

Annual Issue.....Building Materials Directory

Annual Issue.....Fire Resistance Directory

G. Warnock Hersey (WH):

Annual Issue.....Certification Listings

PART 2 - PRODUCTS

2.1 EPDM SHEET ROOFING

A. Conform to ASTM D4637, Type I, Grade 1, black color.

B. Additional Properties:

PROPERTY	TEST METHOD	REQUIREMENT
Shore A Hardness	ASTM D2240	55 to 75 Durometer
Water Vapor Permeance	ASTM E96	Minimum 0.14 perms Water Method
Fungi Resistance	ASTM G21	After 21 days, no sustained growth or discoloration.
Fire Resistance	ASTM E108 Class A	No Combustion Beyond Flame/Heat Source

C. Thickness:

1. Use 1.14 mm (0.045-inch) thick sheet for adhered system.

D. Pipe Boots:

1. Molded EDPM designed for flashing of round penetrations, 200 mm (8 inch) minimum height.
2. Color same as roof membrane.

2.2 EPDM FLASHING SHEET

- A. Conform to ASTM D4637, Type I, Grade 1, Class U, unreinforced, color, same as roof membrane modified as specified for flashing.
- B. Self curing EPDM flashing, adaptable to irregular shapes and surfaces.
- C. Minimum thickness 1.5 mm (0.060-inch).

2.3 MISCELLANEOUS ROOFING MEMBRANE MATERIALS

- A. Sheet roofing manufacturers specified products.
- B. Splice Adhesive: For roofing and flashing sheet.
- C. Lap Sealant: Liquid EPDM rubber for roofing sheet exposed lap edge.
- D. Bonding Adhesives: Neoprene, compatible with roofing membrane, flashing membrane, insulation, metals, concrete, and masonry for bonding roofing and flashing sheet to substrate.
- E. Fastener Sealer: One part elastomeric adhesive sealant.
- F. Temporary Closure Sealers (Night Sealant): Polyurethane two part sealer.
- G. Primers, Splice Tapes, Cleaners, and Butyl Rubber Seals: As specified by roof membrane manufacturer.
- H. Asphalt Roof Cement: ASTM D4586.

2.4 FASTENERS

- A. Fasteners and washers required for securing sheet roofing to deck:
 1. Steel stress plate washers as required by sheet roofing manufacturer:
 - a. Coated against corrosion.
 - b. Separate or attached to fastener.
 - c. Approximately 50 mm (2 inch) diameter or 40 mm x 65 mm (1-1/2 by 2-1/2 inches) rectangular plate with rounded corners, minimum thickness 0.6 mm (0.023-inch).
 2. Fastening strip or batten strip for securing roof membrane to deck:
 - a. Stainless steel strip: ASTM A167 type 302 or 304, minimum 0.5 mm (0.018-inch) thick.
 - b. Aluminum strip: ASTM B209, minimum 2.4 mm (0.094-inch) thick.
 - c. Rounded corners on strips.
 - d. Form strips 38 mm (1-1/2 inches) wide, 3000 mm (10 feet) maximum length with 6 mm x 10 mm (1/4 by 3/8 inch) punched slotted holes at 100 mm (4 inch) centers; centered on width of strip. Punch holes 2 mm (1/16 inch) larger than fastener shank when shank is larger than 5 mm (3/16 inch).

3. Concrete and Masonry Wall Surfaces:
 - a. Nail penetration 13 mm (1/2 inch).
4. Wood:
 - a. Screws; Fed. Spec. FF-S-111, Type I, Style 2.5, coated to resist corrosion, length to provide 19 mm (3/4 inch) minimum penetration.
 - b. Nails: Barbed shank, galvanized.
5. Washers: Neoprene backed metal washer 28 mm (1-1/8 inch) minimum diameter.
- B. Pipe Compression Clamp or Drawband:
 1. Stainless steel or cadmium plated steel drawband.
 2. Worm drive clamp device.
- C. Surface mounted base flashing clamp strip:
 1. Stainless steel strip, ASTM A167, type 302 or 304, dead soft temper, minimum 0.5 mm (0.018-inch) thick.
 2. Aluminum strip: ASTM B209 24 mm (.094-inch) thick.
 3. For exposed location, form strips with 6 mm (1/4 inch) wide top edge bent out 45 degrees (for sealant) from 40 mm (1-1/2 inch) wide material; 2400 mm (8 feet) maximum length with slotted 6 mm x 10 mm (1/4 by 3/8-inch) holes punched at 200 mm (8 inch) centers, centered between bend and bottom edges.
 4. For locations covered by cap flashings, form strips 30 mm (1-1/4 inch) wide, 2400 mm (8 feet) maximum length with slotted holes 6 mm x 10 mm (1/4 by 3/8 inch) punched at 200 mm (8 inch) centers, centered on strip width.

2.5 FLEXIBLE TUBING

- A. Closed cell neoprene, butyl polyethylene, vinyl, or polyethylene tube or rod.
- B. Diameter approximately 1-1/2 times joint width.

2.6 WALKWAY PADS

- A. Rubber walkway pad approximately 450 mm x 450 mm (30 by 30 inches) square or manufacturers standard size with rounded corners.
- B. Approximately 13 mm (1/2 inch) thick.
- C. Ultraviolet light stabilized.

PART 3 - EXECUTION

3.1 GENERAL

- A. Do not apply if deck will be used for subsequent work platform, storage of materials, or staging or scaffolding will be erected thereon unless

protection provided to distribute loads less than one-half compression resistance of roofing system materials.

1. Curbs, blocking, edge strips, and other components to which roofing and base flashing is attached in place ready to receive insulation and, roofing.
 2. Coordinate roof operation with sheet metal work and roof insulation work so that insulation and flashing are installed concurrently to permit continuous roofing operations.
 3. Complete installation of flashing, insulation, and roofing in the same day except for the area where temporary protection is required when work is stopped.
- B. Phased construction is not permitted. The complete installation of roofing system is required in the same day except for area where temporary protection is required when work is stopped. Complete installation includes pavers and ballast for ballasted systems.
- C. Dry out surfaces that become wet from any cause during progress of the work before roofing work is resumed.
- D. Apply materials only to dry substrates.
- E. Except for temporary protection specified, do not apply materials during damp or rainy weather, during excessive wind conditions, nor while moisture (dew, snow, fog, ice, or frost) is present in any amount in or on the materials.
1. Do not apply materials to substrate having temperature of 4°C (40 degrees F) or less, or when materials applied with the roof require higher application temperature.
 2. Do not apply materials when the temperature is below 4°C (40 degrees F).
- F. Temporary Protection:
1. Install temporary protection consisting of a temporary seal and water cut-offs at the end of each day's work and when work is halted for an indefinite period or work is stopped when precipitation is imminent.
 2. Temporarily seal exposed surfaces of insulation within the roofing membrane.
 3. Do not leave insulation surfaces or edges exposed.
 4. Use polyethylene film or building paper to separate roof sheet from bituminous materials.
 5. Apply the temporary seal and water cut off by extending the roof membrane beyond the insulation and securely embedding the edge of the

roof membrane in 6 mm (1/4 inch) thick by 50 mm (2 inches) wide strip of temporary closure sealant (night sealant) and weight edge with sandbags, to prevent displacement; space sandbags not over 2400 mm (8 foot) centers. Check daily to insure temporary seal remains watertight. Reseal open areas and weight down.

6. Before the work resumes, cut off and discard portions of the roof membrane in contact with roof cement or bituminous materials.
 - a. Cut not less than 150 mm (6 inches) back from bituminous coated edges or surfaces.
 - b. Remove temporary polyethylene film or building paper.
7. Remove and discard sandbags contaminated with bituminous products.
8. For roof areas that are to remain intact and that are subject to foot traffic and damage, provide temporary wood walkways with notches in sleepers to permit free drainage.
9. Provide 2 mm (6 mil) polyethylene sheeting or building paper cover over roofing membrane under temporary wood walkways and adjacent areas. Round all edges and corners of wood bearing on roof surface.

3.2 PREPARATION

- A. Test pull out resistance of fasteners in deck in the presence of the Resident Engineer before starting roofing work. Tests are not required for wood.
 1. Test applicable fastener type in applicable deck.
 2. Install fasteners through a sample of the insulation, if any is to be used, into the structural deck.
 3. Test the pull out resistance with a pull out tester.
 4. Test one fastener in each deck level and one for every 230 m² (2500 square feet) of deck type and level.
 5. Test at locations designated by Resident Engineer.
 6. Do not proceed with the roofing work if the pull out resistance of the fasteners is less than specified.
 7. Test results:
 - a. Repeat tests using other type fasteners or use additional fasteners to stay within the pullout load resistance criteria.
 - b. Patch cementitious deck to repair areas of fastener tests holes.
- B. Remove dirt, debris, and surface moisture. Cover or fill voids greater than 6 mm (1/4 inch) wide to provide solid support for roof membrane.

3.3 INSTALLATION OF ROOFING AND FLASHING

- A. Do not allow the membrane to come in contact with surfaces contaminated with asphalt, coal tar, oil, grease, or other substances which are not compatible with EPDM roofing membrane.
- B. If possible, install the membrane so the sheets run perpendicular to the long dimension of the insulation boards.
- C. If possible, start at the low point of the roof and work towards the high point. Lap the sheets so the flow of water is not against the edges of the sheet. Coordinate with roof insulation installation.
- D. Position the membrane so it is free of buckles and wrinkles.
- E. Roll sheet out on deck; inspect for defects as sheet is being rolled out and remove defective areas:
 - 1. Allow 30 minutes for relaxing before proceeding.
 - 2. Lap edges and ends of sheets 75 mm (3 inches) or more as recommended by the manufacturer. Clean lap surfaces as specified by manufacturer.
 - 3. Adhesively splice laps. Apply pressure as required. Seam strength of laps as required by ASTM D4637.
 - 4. Check seams to ensure continuous adhesion and correct defects.
 - 5. Finish edges of laps with a continuous beveled bead of lap sealant to sheet edges to provide smooth transition as specified by manufacturer.
 - 6. Finish seams as the membrane is being installed (same day).
 - 7. Anchor perimeter to deck or wall as specified.
- F. Membrane Perimeter Anchorage:
 - 1. Install batten strip or steel stress plate with fasteners at the perimeter of each roof level, curb flashing, expansion joints and similar penetrations as indicated in accordance with membrane manufacturer's instructions on top of roof membrane to wall or deck.
 - 2. Mechanically fastened as follows:
 - a. Top of mechanical fastener set flush with top surface of the nailing strip or stress plate.
 - b. Space mechanical fasteners a maximum 300 mm (12 inches) on center.
 - c. Start 25 mm (1 inch) from the end of the nailing strip when used.
 - d. When strip is cut round edge and corners before installing.
 - e. Set fasteners in lap sealant and cover fastener head with fastener sealer including batten strip or stress plate.

- f. Stop fastening strip where the use of the nailing strip interferes with the flow of the surface water, separate by a 150 mm (6 inch) space, then start again.
- g. After mechanically fastening cover and seal with a 225 mm (9 inch) wide strip of flashing sheet. Use splice adhesive on all laps and finish edge with sealant as specified.
- h. At gravel stops and fascia-cants turn the membrane down over the front edge of the blocking, cant, or the nailer to below blocking. Secure the membrane to the vertical portion of the nailer; with fasteners spaced not over 150 mm (6 inches) on centers.
- i. At parapet walls intersecting building walls and curbs, secure the membrane to the structural deck with fasteners 150 mm (6 inches) on center or as shown in NRCA manual (Fifth Edition)

G. Adhered System:

- 1. Apply bonding adhesive in quantities required by roof membrane manufacturer.
- 2. Fold sheet back on itself, clean and coat the bottom side of the membrane and the top of the deck with adhesive. Do not coat the lap joint area.
- 3. After adhesive has set according to adhesive manufacturer's application instruction, roll the membrane into the adhesive in manner that minimizes voids and wrinkles.
- 4. Repeat for other half of sheet. Cut voids and wrinkles to lay flat and clean for repair patch over cut area.

H. Install flashings as the membrane is being installed (same day). If the flashing cannot be completely installed in one day, complete the installation until the flashing is in a watertight condition and provide temporary covers or seals.

I. Flashing Roof Drains:

- 1. Install roof drain flashing as recommended by the membrane manufacturer, generally as follows:
 - a. Coordinate to set the metal drain flashing in asphalt roof cement, holding cement back from the edge of the metal flange.
 - b. Do not allow the roof cement to come in contact with the EPDM roof membrane.
 - c. Adhere the EPDM roof membrane to the metal flashing with the membrane manufacturer's recommended bonding adhesive.

2. Turn down the metal drain flashing and EPDM roof membrane into the drain body and install clamping ring and stainer.

J. Installing EPDM Base Flashing and Pipe Flashing:

1. Install EPDM flashing membranes to pipes, walls or curbs to a height not less than 200 mm (8 inches) above roof surfaces and 100 mm (4 inches) on roof membranes. Install in accordance with NRCA manual:
 - a. Adhere flashing to pipe, wall or curb with bonding adhesive.
 - b. Form inside and outside corners of EPDM flashing membrane in accordance with NRCA manual (Fifth Edition). Form pipe flashing in accordance with NRCA manual (Fifth Edition).
 - c. Lap ends not less than 100 mm (4 inches).
 - d. Adhesively splice flashing membranes together and flashing membranes to roof membranes. Finish exposed edges with sealant as specified.
2. Anchor top of flashing to walls or curbs with fasteners spaced not over 150 mm (6 inches) on center. Use surface mounted fastening strip with sealant on ducts. Use pipe clamps on pipes or other round penetrations.
3. Apply sealant to top edge of flashing.

K. Repairs to membrane and flashings:

1. Remove sections of EPDM sheet roofing or flashing that is creased wrinkled or fishmouthed.
2. Cover removed areas, cuts and damaged areas with a patch extending 100 mm (4 inches) beyond damaged, cut, or removed area. Adhesively splice to roof membrane or flashing. Finish edge of lap with sealant as specified.

3.4 WALKWAY PADS

- A. Clean membrane where pads are applied.
- B. Adhere pads to membrane with splicing cement.
- C. Allow not less than 1 inch break between pads and 2 inch maximum break.

3.5 FIELD QUALITY CONTROL

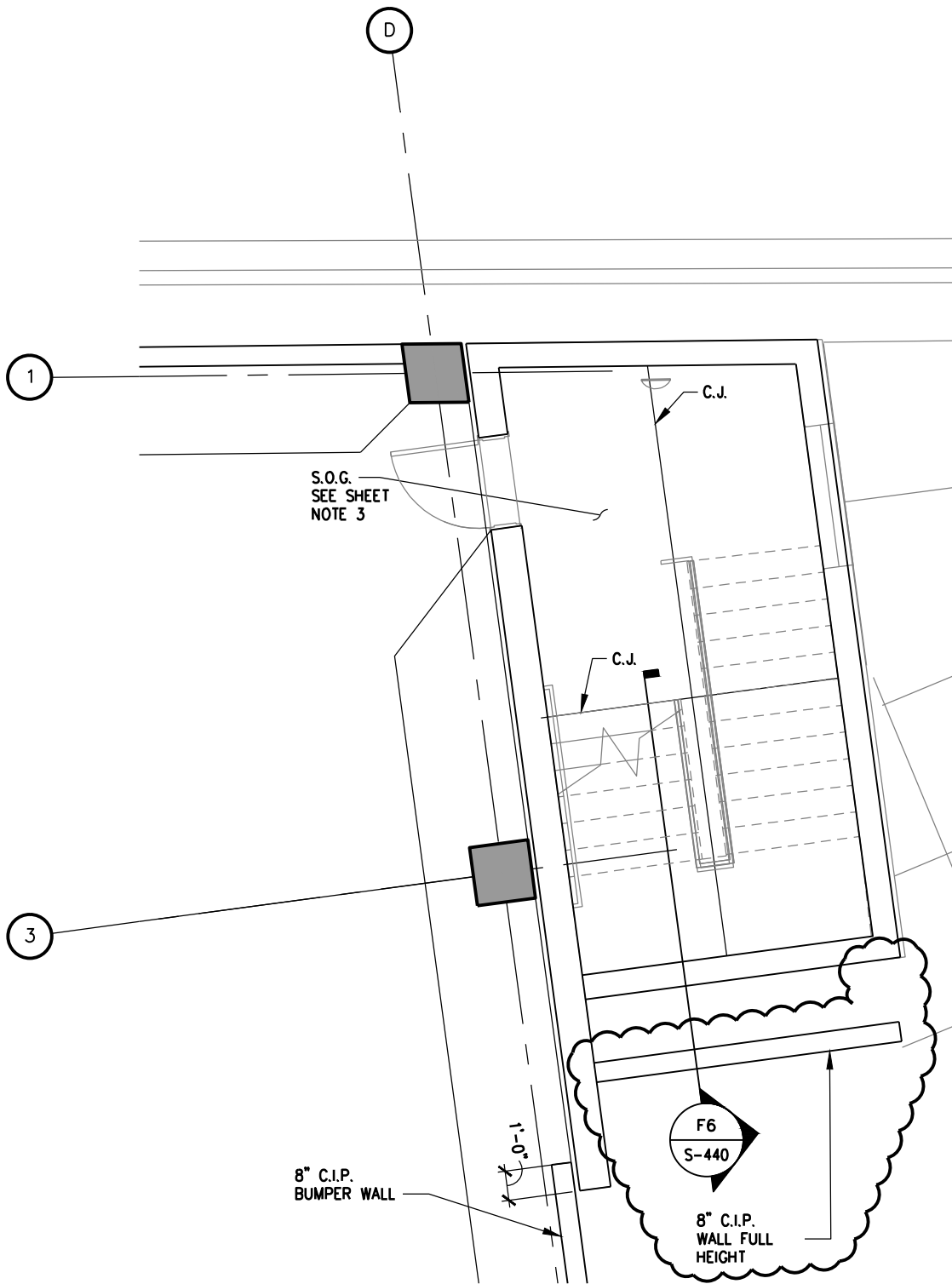
- A. Examine and probe seams in the membrane and flashing in the presence of the Resident Engineer and Membrane Manufacturer's Inspector.
- B. Probe the edges of welded seams with a blunt tipped instrument. Use sufficient hand pressure to detect marginal bonds, voids, skips, and fishmouths.
- C. Cut 100 mm (4 inch) wide by 300 mm (12 inch) long samples through the seams where directed by the Resident Engineer.

1. Cut one sample for every 450 m (1500 linear feet) of seams.
 2. Cut the samples perpendicular to the longitudinal direction of the seams.
 3. Failure of the samples to maintain the standard of quality within a reasonable tolerance of the approved samples will be cause for rejection of the work.
- D. Repair areas of welded seams where samples have been taken or marginal bond voids or skips occur.
- E. Repair fishmouths and wrinkles by cutting to lay flat and installing patch over cut area extending 100 mm (4 inches) beyond cut.

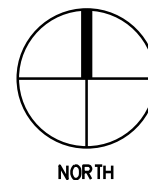
3.7 TEMPORARY ROOF

- A. Install temporary roof when sequences of work or weather does not permit installation of a completed permanent roof system or roof would be subject to phasing of roof work, construction traffic, scaffolds, and work over roof area.
- B. Use of 1.15 mm (0.045-inch) thick non-reinforced EPDM membrane or other temporary membrane as approved.
- C. Secure membrane to deck with mechanical fasteners or temporary ballast not exceeding deck dead load capacity.
- D. Repair cuts, tears, and punctures with patches to keep system watertight.
- E. Install permanent roof system within one year.

- - - E N D - - -



C4 **NE STAIR
GROUND TIER PLAN**



233 North Michigan Avenue
Suite 3000
Chicago, Illinois 60601
312.565.5912 Facsimile
312.565.1800 Telephone

TERRACON
Geotechnical Engineer
2640 12TH STREET SW
CEDAR RAPIDS, IOWA 52404
319.366.8321 Telephone
319.366.0032 Fax

WALKER PARKING CONSULTANTS
Structural Engineer
505 DAVIS ROAD
ELGIN, ILLINOIS 60123
847.697.2640 Telephone
847.697.7439 Fax

GRAEF
Civil Engineer/Landscape Architect
332 SOUTH MICHIGAN, SUITE 1400
CHICAGO, ILLINOIS 60604-4367
312.582.2020 Telephone
312.939.7014 Fax

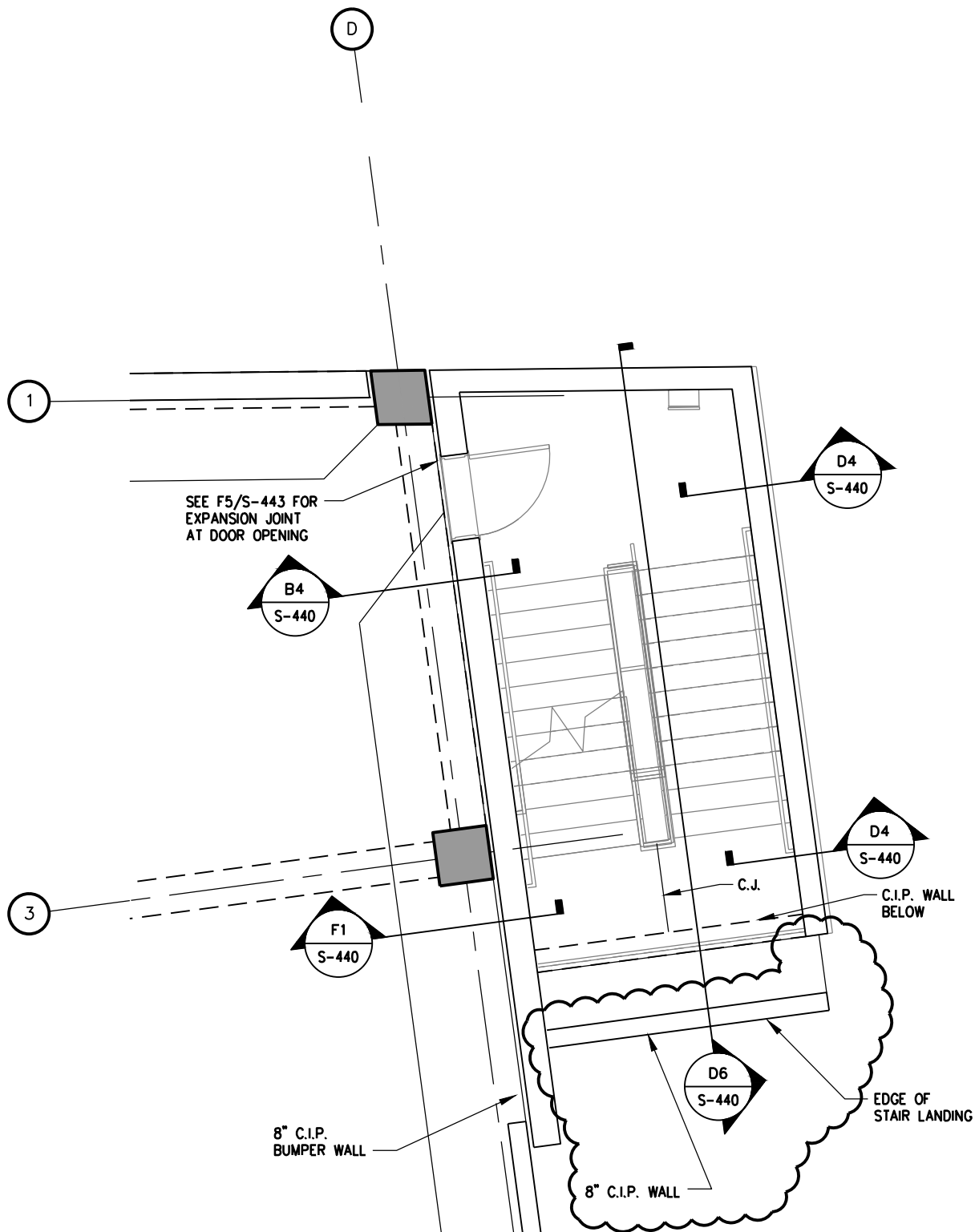
KJWW ENGINEERING CONSULTANTS
Mechanical/Electrical/Plumbing Engineer
623 26TH AVENUE
ROCK ISLAND, ILLINOIS 61201
309.788.0673 Telephone
309.786-5967 Fax

**PARKING STRUCTURE
400 CAR PARKING GARAGE**

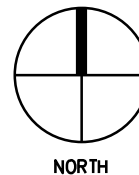
**IOWA CITY, IA
PROJECT ADDRESS**

Date: 10/1/13
Sheet Rvsd: S-420
Scale: NTS
Drawn By: ERL
Project No.: 31-7141.10

Sketch No.: S-SK 01-10.1.13



**(C7) NE STAIR
SECOND TIER PLAN**



233 North Michigan Avenue
Suite 3000
Chicago, Illinois 60601
312.565.5912 Facsimile
312.565.1800 Telephone

TERRACON
Geotechnical Engineer
2640 12TH STREET SW
CEDAR RAPIDS, IOWA 52404
319.366.8321 Telephone
319.366.0032 Fax

WALKER PARKING CONSULTANTS
Structural Engineer
505 DAVIS ROAD
ELGIN, ILLINOIS 60123
847.697.2640 Telephone
847.697.7439 Fax

GRAEF
Civil Engineer/Landscape Architect
332 SOUTH MICHIGAN, SUITE 1400
CHICAGO, ILLINOIS 60604-4367
312.582.2020 Telephone
312.939.7014 Fax

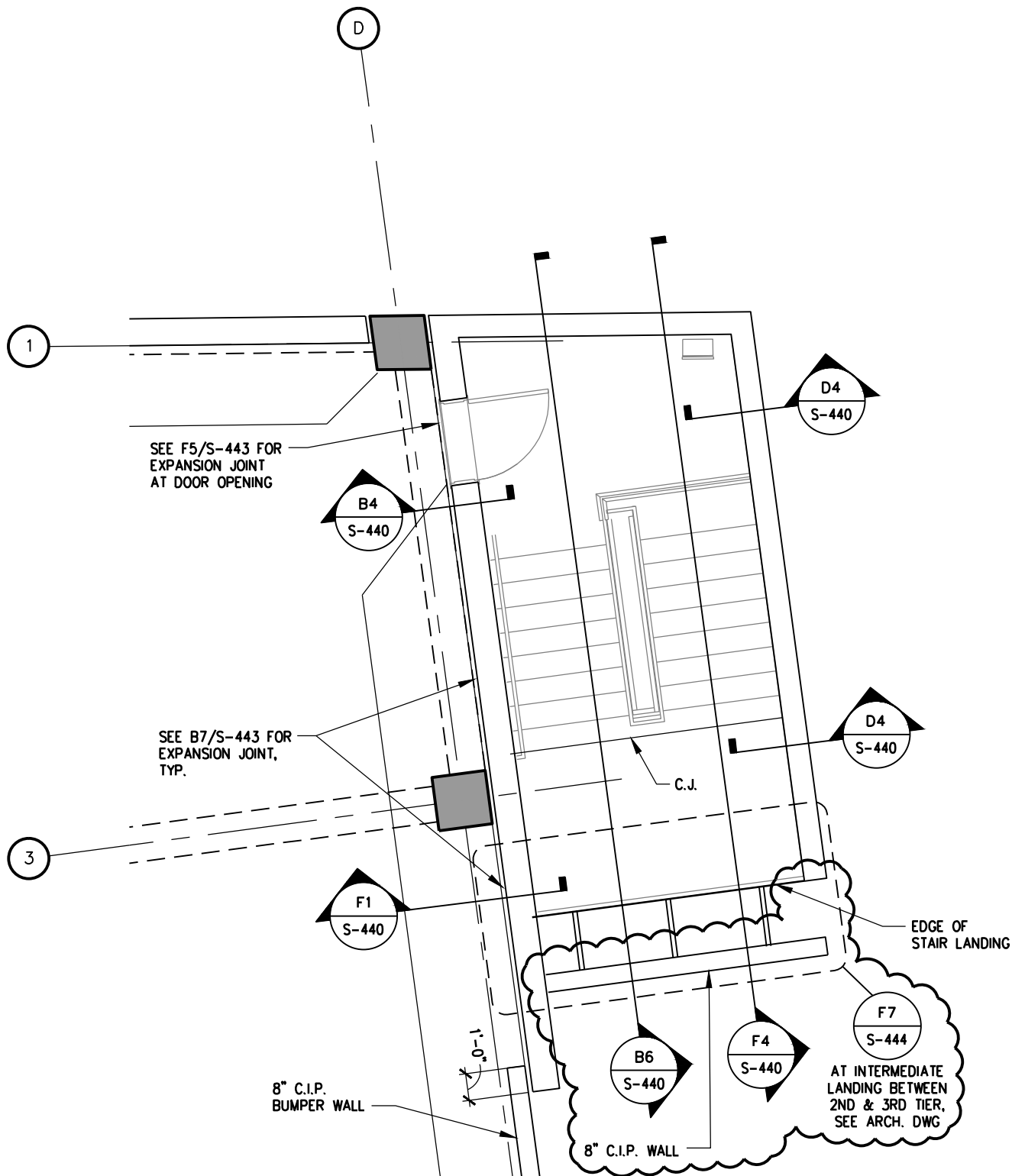
KJWW ENGINEERING CONSULTANTS
Mechanical/Electrical/Plumbing Engineer
623 26TH AVENUE
ROCK ISLAND, ILLINOIS 61201
309.788.0673 Telephone
309.786-5967 Fax

**PARKING STRUCTURE
400 CAR PARKING GARAGE**

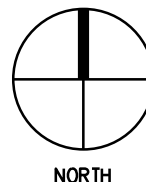
**IOWA CITY, IA
PROJECT ADDRESS**

Date: 10/1/13
Sheet Rvsd: S-420
Scale: NTS
Drawn By: ERL
Project No.: 31-7141.10

Sketch No.: S-SK 02-10.1.13



NE STAIR THIRD TIER PLAN F1



233 North Michigan Avenue
Suite 3000
Chicago, Illinois 60601
312.565.5912 Facsimile
312.565.1800 Telephone

TERRACON
Geotechnical Engineer
2640 12TH STREET SW
CEDAR RAPIDS, IOWA 52404
319.366.8321 Telephone
319.366.0032 Fax

WALKER PARKING CONSULTANTS
Structural Engineer
505 DAVIS ROAD
ELGIN, ILLINOIS 60123
847.697.2640 Telephone
847.697.7439 Fax

GRAEF
Civil Engineer/Landscape Architect
332 SOUTH MICHIGAN, SUITE 1400
CHICAGO, ILLINOIS 60604-4367
312.582.2020 Telephone
312.939.7014 Fax

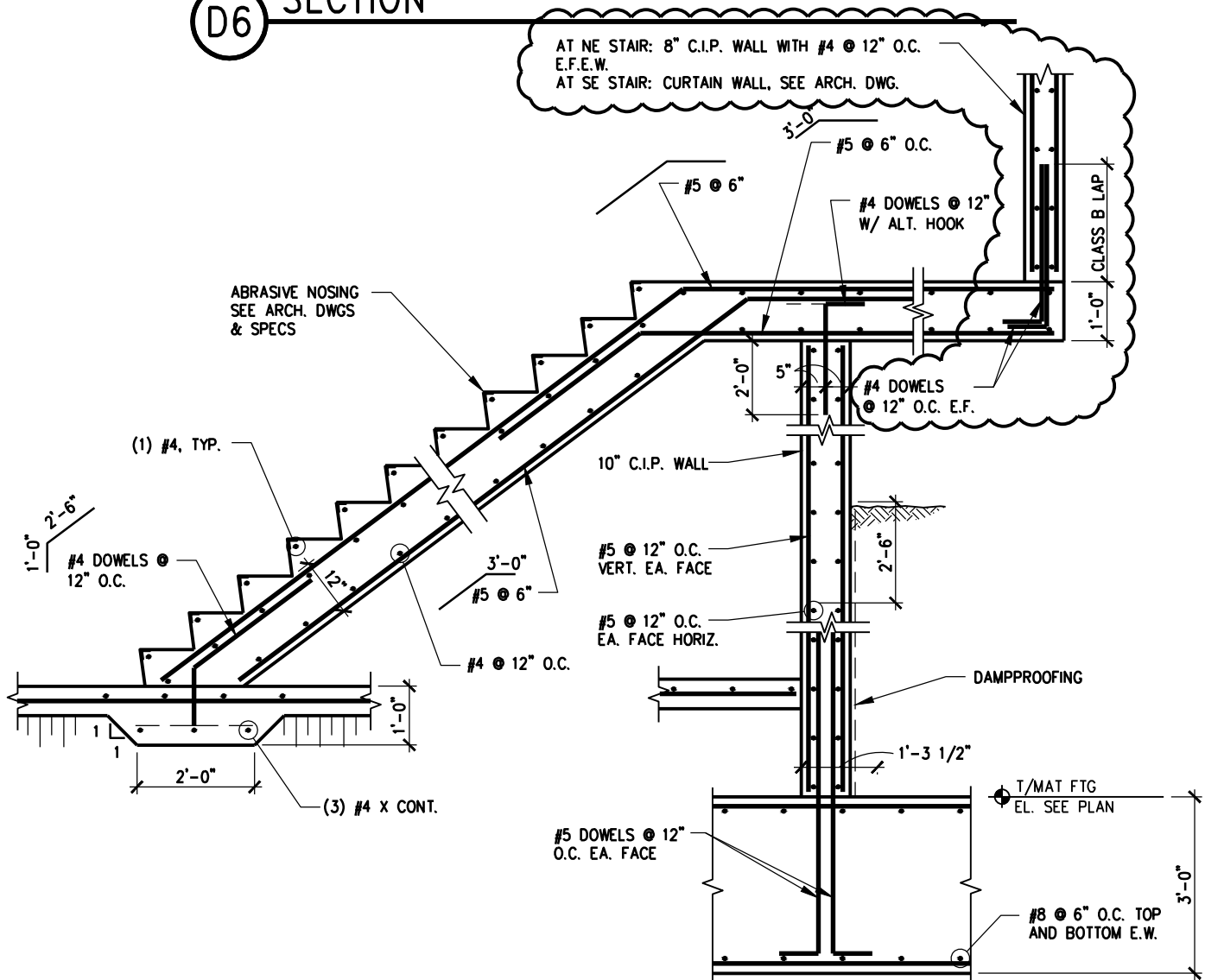
KJWW ENGINEERING CONSULTANTS
Mechanical/Electrical/Plumbing Engineer
623 26TH AVENUE
ROCK ISLAND, ILLINOIS 61201
309.788.0673 Telephone
309.786.5967 Fax

PARKING STRUCTURE 400 CAR PARKING GARAGE

IOWA CITY, IA
PROJECT ADDRESS

Date: 10/1/13
Sheet Rvsd: S-420
Scale: NTS
Drawn By: ERL
Project No.: 31-7141.10
Sketch No.: S-SK 03-10.1.13

(D6) SECTION



(F6) SECTION

233 North Michigan Avenue
Suite 3000
Chicago, Illinois 60601
312.565.5912 Facsimile
312.565.1800 Telephone
TERRACON
Geotechnical Engineer
2640 12TH STREET SW
CEDAR RAPIDS, IOWA 52404
319.366.8321 Telephone
319.366.0032 Fax

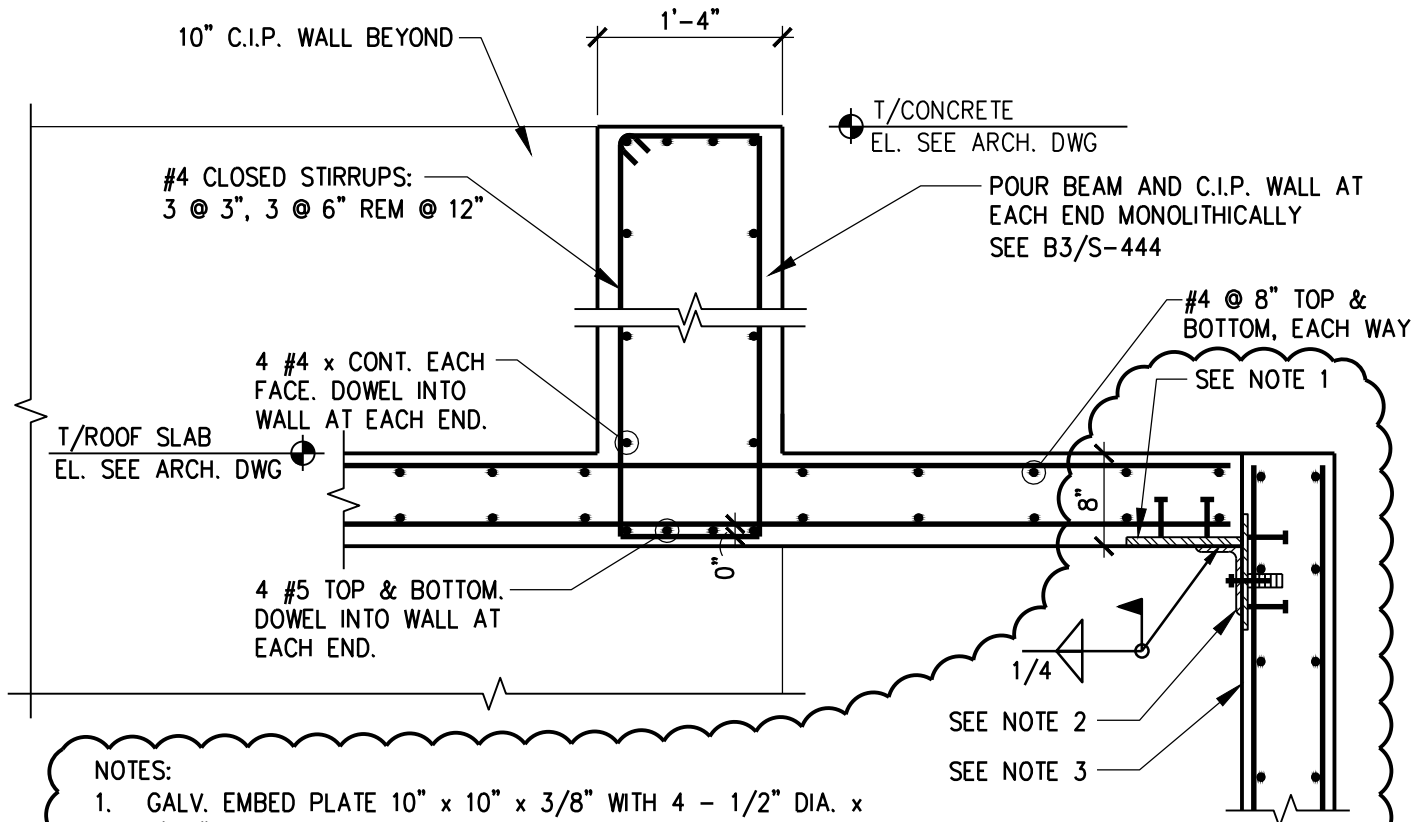
WALKER PARKING CONSULTANTS
Structural Engineer
505 DAVIS ROAD
ELGIN, ILLINOIS 60123
847.697.2640 Telephone
847.697.7439 Fax
GRAEF
Civil Engineer/Landscape Architect
332 SOUTH MICHIGAN, SUITE 1400
CHICAGO, ILLINOIS 60604-4367
312.582.2020 Telephone
312.939.7014 Fax

KJWW ENGINEERING CONSULTANTS
Mechanical/Electrical/Plumbing Engineer
623 26TH AVENUE
ROCK ISLAND, ILLINOIS 61201
309.788.0673 Telephone
309.786-5967 Fax

PARKING STRUCTURE 400 CAR PARKING GARAGE

IOWA CITY, IA
PROJECT ADDRESS

Date: 10/1/13
Sheet Rvsd: S-440
Scale: NTS
Drawn By: ERL
Project No.: 31-7141.10
Sketch No.: S-SK 04-10.1.13



NOTES:

1. GALV. EMBED PLATE 10" x 10" x 3/8" WITH 4 - 1/2" DIA. x 0'-6" H.A.S.
2. GALV. ANGLE AT 3'-0" O.C. 6 x 4 x 3/8 x 0'-6" WITH (2) 2" VERT. SLOT HOLE AT VERT. LEG AND 2 - 3/4" DIA. BOLT.
3. AT NE STAIR: 8" C.I.P. WALL WITH #4 @ 12" O.C. E.F.E.W.
AT SE STAIR: CURTAIN WALL, SEE ARCH. DWG.

B5

SECTION

233 North Michigan Avenue
Suite 3000
Chicago, Illinois 60601
312.565.5912 Facsimile
312.565.1800 Telephone

TERRACON
Geotechnical Engineer
2640 12TH STREET SW
CEDAR RAPIDS, IOWA 52404
319.366.8321 Telephone
319.366.0032 Fax

WALKER PARKING CONSULTANTS
Structural Engineer
505 DAVIS ROAD
ELGIN, ILLINOIS 60123
847.697.2640 Telephone
847.697.7439 Fax

GRAEF
Civil Engineer/Landscape Architect
332 SOUTH MICHIGAN, SUITE 1400
CHICAGO, ILLINOIS 60604-4367
312.582.2020 Telephone
312.939.7014 Fax

KJWW ENGINEERING CONSULTANTS
Mechanical/Electrical/Plumbing Engineer
623 26TH AVENUE
ROCK ISLAND, ILLINOIS 61201
309.788.0673 Telephone
309.786-5967 Fax

PARKING STRUCTURE
400 CAR PARKING GARAGE

IOWA CITY, IA
PROJECT ADDRESS

Date: 10/1/13

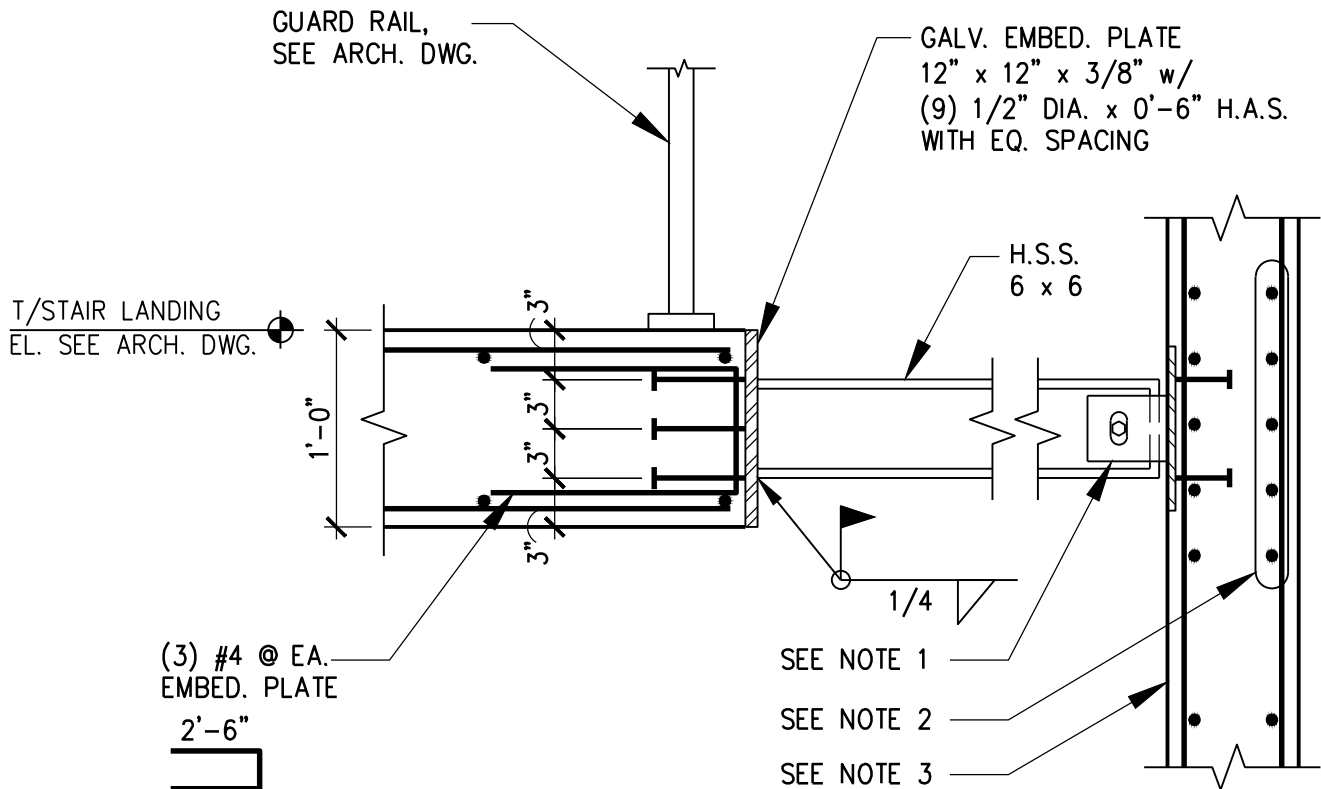
Sheet Rvsd: S-444

Scale: NTS

Drawn By: ERL

Project No.: 31-7141.10

Sketch No.: S-SK 05-10.1.13



NOTES:

1. GALV. ANGLE 4 x 3 x 1/4 x 0'-5" AT EACH SIDE WITH 2" VERT. SLOT HOLE.
2. 5 #4 @ 4" O.C. HORIZ. E.F.
3. 8" C.I.P. WALL WITH #4 @ 12" O.C. E.F.E.W.

B1

SECTION
AT NE STAIR

233 North Michigan Avenue
Suite 3000
Chicago, Illinois 60601
312.565.5912 Facsimile
312.565.1800 Telephone

TERRACON
Geotechnical Engineer
2640 12TH STREET SW
CEDAR RAPIDS, IOWA 52404
319.366.8321 Telephone
319.366.0032 Fax

WALKER PARKING CONSULTANTS
Structural Engineer
505 DAVIS ROAD
ELGIN, ILLINOIS 60123
847.697.2640 Telephone
847.697.7439 Fax

GRAEF
Civil Engineer/Landscape Architect
332 SOUTH MICHIGAN, SUITE 1400
CHICAGO, ILLINOIS 60604-4367
312.582.2020 Telephone
312.939.7014 Fax

KJWW ENGINEERING CONSULTANTS
Mechanical/Electrical/Plumbing Engineer
623 26TH AVENUE
ROCK ISLAND, ILLINOIS 61201
309.788.0673 Telephone
309.786-5967 Fax

PARKING STRUCTURE
400 CAR PARKING GARAGE

IOWA CITY, IA
PROJECT ADDRESS

Date: 10/1/13

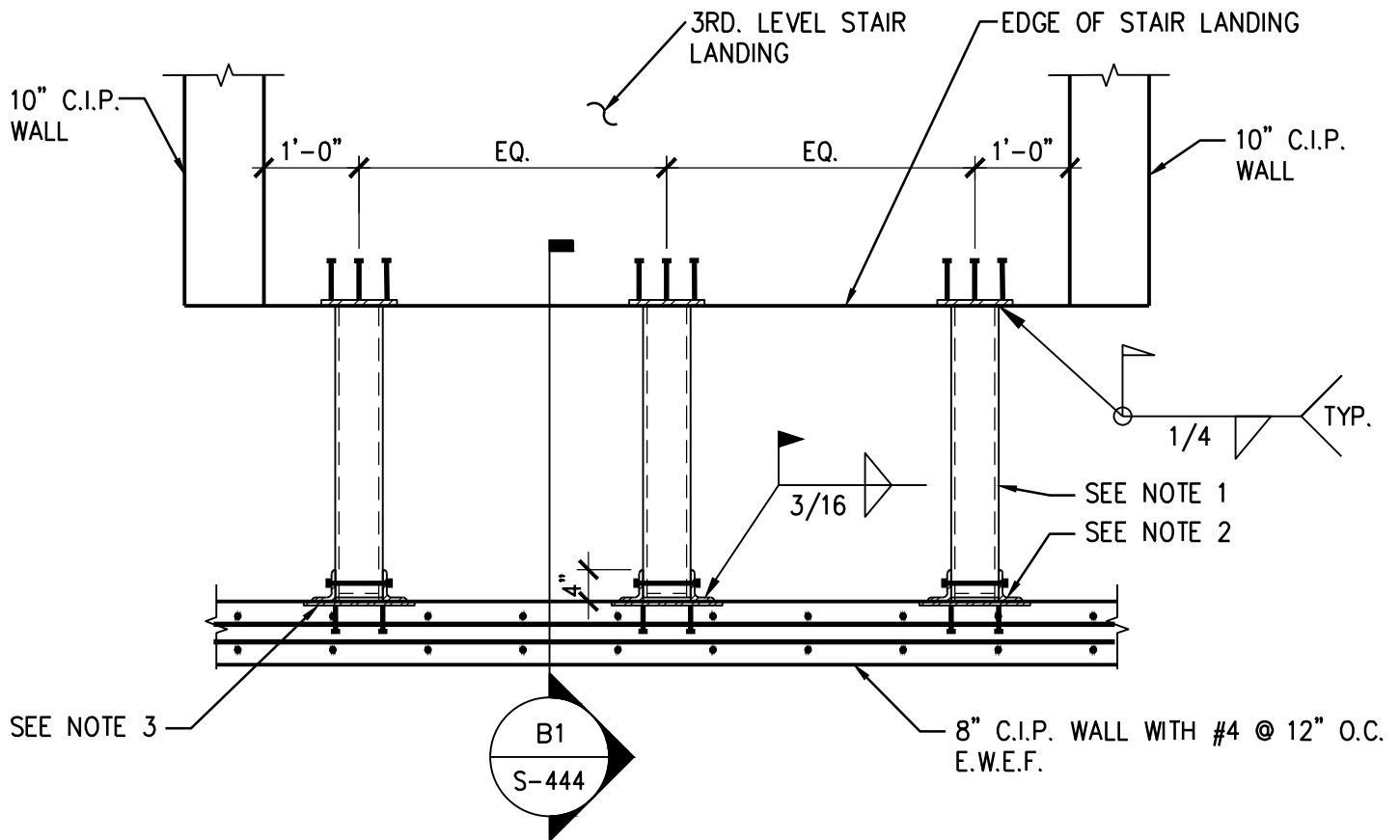
Sheet Rvsd: S-444

Scale: NTS

Drawn By: ERL

Project No.: 31-7141.10

Sketch No.: S-SK 06-10.1.13



NOTES:

1. H.S.S. 6 x 6 x 1/4 WITH END CAP PLATE, TYP.
2. GALV. ANGLE 4 x 3 x 1/4 x 0'-5" AT EACH SIDE WITH 2" VERT. SLOT HOLE, TYP.
3. GALV. EMBED PLATE 14" x 14" x 3/8" WITH (4) - 1/2" DIA. x 0'-6" H.A.S., TYP.



223 North Michigan Avenue
Suite 3000
Chicago, Illinois 60601
312.565.5912 Facsimile
312.565.1800 Telephone

TERRACON
Geotechnical Engineer
2640 12TH STREET SW
CEDAR RAPIDS, IOWA 52404
319.366.8321 Telephone
319.366.0032 Fax

WALKER PARKING CONSULTANTS
Structural Engineer
505 DAVIS ROAD
ELGIN, ILLINOIS 60123
847.697.2640 Telephone
847.697.7439 Fax

GRAEF
Civil Engineer/Landscape Architect
332 SOUTH MICHIGAN, SUITE 1400
CHICAGO, ILLINOIS 60604-4367
312.582.2020 Telephone
312.939.7014 Fax

KJWW ENGINEERING CONSULTANTS
Mechanical/Electrical/Plumbing Engineer
623 26TH AVENUE
ROCK ISLAND, ILLINOIS 61201
309.788.0673 Telephone
309.786-5967 Fax

**PARKING STRUCTURE
400 CAR PARKING GARAGE**

**IOWA CITY, IA
PROJECT ADDRESS**

Date: 10/1/13
Sheet Rvsd: S-444
Scale: NTS
Drawn By: ERL
Project No.: 31-7141.10

Sketch No.: S-SK 07-10.1.13