



CAPTAIN JAMES A. LOVELL FEDERAL HEALTH CARE CENTER



Department of Veterans Affairs Department of the Navy

3001 N. GREEN BAY RD.
NORTH CHICAGO, IL 60064

REPLACE SURGICAL FLOORING PROJECT # 556-13-106

GENERAL
133-GI-001
133-GI-002

COVER SHEET
**GENERAL INFORMATION/SYMBOLS/
LOCATION**

ARCHITECTURAL
133-AI-001 **ARCHITECTURAL ABBREVIATIONS**
133-AI-101 **LIFE SAFETY PLAN**
133-AD-101 **DEMOLITION PLAN**
133-AS-101 **FLOOR PLAN**

133-AS-102 **FLOOR FINISH PLAN**
133-AS-103 **FLOOR FINISH PLAN - DEDUCTIVE
ALTERNATE NO. 2**
133-AS-201 **INTERIOR ELEVATIONS**
133-AS-501 **ARCHITECTURAL DETAILS**
133-AS-601 **ROOM FINISH SCHEDULE**

100% CONSTRUCTION DOCUMENTS

**BUILDING IS
FULLY
SPRINKLERED**

		CONSULTANTS:		ARCHITECT/ENGINEERS: COX DESIGN ASSOCIATES		Approved: Assistant Director Approved: Chief of Staff Approved: Chief, Engineering			Drawing Title COVER SHEET		Project Name REPLACE SURGICAL FLOORING		Project Number 556-13-106		Office of Construction and Facilities Management 			
				ARCHITECTURE PLANNING INTERIORS		Approved: Service Chief					Date AUGUST 7, 2013		Drawing Number 133-GI-001					
				Austin 5121 Bee Caves Road, Suite 203 Chicago 345 N. Canal St. Suite 701		Approved: Chief, Bio-Med			Approved: Chief, EMS		Approved: Chief, Infection Control		Building Number 133-2C				Checked RHC	Drawn RAT
				Austin, Texas 78746 Chicago, IL 60605		Approved: Chief, IT			Approved: Chief, M&O		Approved: Chief, Police							
Revisions:		Date		F:512 - 327 - 4149 F:312 - 454 - 9439		Approved: Chief, Safety			Approved: Chief		Approved: Chief		Location CAPTAIN JAMES A. LOVELL FHCC 3001 GREEN BAY ROAD NORTH CHICAGO, IL 60064		Dwg. of			

A
B
C
D
E
F

three inches = one foot
one and one half inches = one foot
one inch = one foot
three quarters inch = one foot
one half inch = one foot
three eighths inch = one foot
one quarter inch = one foot
one eighth inch = one foot

DISCIPLINE REFERENCES

DRAWINGS FOR THE FOLLOWING DISCIPLINES ARE CONTAINED IN THE DOCUMENT. THE DISCIPLINES ARE IDENTIFIED BY THE REFERENCE WHICH IS INCORPORATED INTO THE SHEET TITLE.

GI
D
A

GENERAL INFORMATION
DEMOLITION
ARCHITECTURAL

SHEET NUMBER

1-A1

BUILDING NUMBER

SHEET NUMBER
DISCIPLINE

DRAWING NUMBERING

1 BUILDING SECTION

REF: 1/1-A1

EACH DRAWING IS NUMBERED ACCORDING TO ITS LOCATION ON THE SHEET. THE DRAWING TITLE APPEARS ABOVE THE DEMARCATION LINE AND, APPROPRIATE THE SCALE IS LOCATED BELOW THE DEMARCATION LINE IN THE LOWER LEFT-HAND QUADRANT OF THE KEY. THE DRAWING CAN BE REFERENCED BACK TO ITS ORIGINAL SHEET AND DRAWING BY THE DRAWING REFERENCE LOCATION IN THE LOWER RIGHT-HAND QUADRANT.

DRAWING REFERENCE

RE: 1/1-A26

SHEET NUMBER

DRAWING NUMBER ON SHEET BY LOCATION

REFERENCE

PROJECT SHEET NOTES

A. REFER TO SHEET 133-GI-002 FOR STANDARD SYMBOLS
B. REFER TO SHEET 133-GI-002 FOR PROJECT GENERAL NOTES
C. FOR LIFE SAFETY CODE ANALYSIS AND PLANS REFER TO SHEET 133-AI-101
D. FOR ARCHITECTURAL GENERAL NOTES, ABBREVIATIONS, SYMBOLS, DIMENSIONING CONVENTIONS REFER TO SHEET 133-GI-002
E. FOR ARCHITECTURAL MATERIAL/FINISH DESIGNATIONS REFER TO MATERIAL LEGEND ON SHEET 133-AS-601

ARCHITECTURAL FLOOR PLAN SYMBOLS

⋈

CENTER LINE

⊕

ELEVATION INDICATOR

CENTER LINE INDICATOR

DEMOLITION LINE

EXISTING TO REMAIN LINE

FEATURES ABOVE LINE INDICATOR

CONSTRUCTION LIMITS

⌋

BREAK, ROUND (USER DEFINES SIZE)

⌋

BREAK, STRAIGHT (SEE SECTION INDICATORS)

2

1-A26

DETAIL INDICATOR

2

1-A26

DETAIL INDICATOR

⌋

DIMENSION LINE

15

15

1-A23

ELEVATION NOT PRESENT

1-A23

ELEVATION PAGE NUMBER

1-A23

ELEVATION DETAIL NUMBER

1

1-A26

DETAIL REFERENCE

1

1-A26

DETAIL DIRECTION

1

1-A26

PAGE DETAIL NUMBER

1

1-A26

DETAIL PAGE NUMBER

1

1-A26

WALL SECTION INDICATOR

1

1-A26

PAGE DETAIL NUMBER

1

1-A26

DETAIL PAGE NUMBER

1

1-A26

BUILDING SECTION INDICATOR

1

1-A26

DETAIL DIRECTION

1

1-A26

PAGE DETAIL NUMBER

1

1-A26

DETAIL PAGE NUMBER

1

PLAN NOTE

1

KEYNOTE / WALL TYPE / PARTITION TYPE

1

ROOM TITLE

1

ROOM NAME

401

ROOM NUMBER

180 SF

GROSS SF FROM INTERIOR FINISH (IF APPLICABLE)

1

COLUMN GRID

1

NORTH ARROW

1

REVISION NUMBER AND EXTENT

1

REVISION NUMBER - SEE REVISION HISTORY ON THE TITLE BLOCK OF EACH SHEET

1

EXTENT OF CURRENT REVISION

1

KEYED NOTE MARK -SEE CORRESPONDING NUMBERED KEY NOTE ON SHEET WHERE REFERENCE OCCURS

MATERIAL GRAPHICS

CONCRETE

EXISTING MASONRY

GYP BD

BUILDING INTERIOR

EXISTING TO REMAIN

GENERAL NOTES

1. VERIFY ALL DIMENSIONS AND CONDITIONS A.Y JOB SITE.
2. UNLESS NOTED TO BE REMOVED AND DISPOSED, ALL EXISTING ITEMS ARE TO REMAIN. THEY SHALL BE PROTECTED FROM DAMAGE DUE TO CONSTRUCTION ACTIVITIES. ANY EXISTING ITEMS TO REMAIN THAT BECOME DAMAGED DUE TO CONSTRUCTION ACTIVITIES SHALL BE REPAIRED OR REPLACED TO MATCH EXISTING AT NO ADDITIONAL COST TO THE OWNER..
3. MAINTAIN CONTINUOUS UTILITY SERVICE TO ALL SPACES IN THE BUILDING NOT AFFECTED BY THIS WORK. COORDINATE WITH OWNER ANY DISRUPTION IN SERVICES REQUIRED TO PERFORM WORK OR TO MODIFY EXISTING PIPING, DUCTWORK, OR ANY ASSOCIATED EQUIPMENT.
4. THE GENERAL CONTRACTOR SHALL REPORT ANY UNFORESEEN FIELD CONDITIONS, ERRORS, INCONSISTENCIES, OR OMISSIONS DISCOVERED AT ANY TIME DURING THE WORK, UPON SUCH DISCOVERY, THE CONTRACTOR SHALL IMMEDIATELY CONTACT THE C.O.R. FOR CLARIFICATION BEFORE PROCEEDING OR CONTINUING WITH THAT PORTION OF THE WORK OR ANY PORTION RELATED THERE TO.
5. ALL WORK SHALL CONFORM TO ALL APPLICABLE CODES AND STANDARDS INCLUDING THE INTERNATIONAL BUILDING CODE 2012 EDITION, VA MASTER SPECIFICATIONS, AND NFPA 101 2012 EDITION.
6. CONTRACTOR SHALL NOT BARRICADE / BARRIER EMERGENCY EGRESS TO OR FROM THIS AREA. CONTRACTOR SHALL MAINTAIN EXIT TO EXTERIOR DURING THE WORK PROCESS
7. PROVIDE ACCESS TO THE WORK AS DIRECTED BY THE C.O.R. SECURE ACCESS POINT AS SPECIFIED AND DIRECTED BY THE COR PROJECT ENGINEER. PROVIDE WALK-OFF MATS TO MEET FACILITY INFECTION CONTROL GUIDELINES AT EACH ACCESS POINT.
8. SHADED AREAS ARE GENERALLY OUT OF SCOPE FOR THIS PROJECT.
9. NOTATIONS FOR ITEMS OF WORK APPLY TO EACH AND EVERY GRAPHICAL INDICATION SHOWN ON THE DRAWINGS, WETHER OR NOT NOTED.
10. THE GENERAL CONTRACTOR SHALL VISIT THE SITE, VERIFY FIELD CONDITIONS AND CAREFULLY COMPARE SUCH FIELD CONDITIONS AND OTHER INFORMATION KNOWN TO THE CONTRACTOR WITH CONTRACT DOCUMENTS.
11. THE GENERAL CONTRACTOR SHALL REPORT ANY UNFORESEEN FIELD CONDITIONS, ERRORS, INCONSISTENCIES, OR OMISSIONS DISCOVERED AT ANY TIME DURING THE WORK, UPON SUCH DISCOVERY, THE CONTRACTOR SHALL IMMEDIATELY CONTRACT THE ARCHITECT AND PROJECT ENGINEER FOR CLARIFICATION BEFORE PROCEEDING OR CONTINUING WITH THAT PORTION OF THE WORK OR ANY PORTION RELATED THERE TO.
12. THE GENERAL CONTRACTOR SHALL NOTIFY THE PROJECT ENGINEER AND THE ARCHITECT OF ANY DISCREPANCIES BETWEEN THE DRAWINGS, NOTES AND ACTUAL FIELD CONDITIONS BEFORE BIDDING AND COMMENCING ANY WORK, AND REQUEST CLARIFICATION IN WRITING.
13. WORK SHALL BE PERFORMED DURING THE FOLLOWING HOURS:
MONDAY THROUGH THURSDAY - 1800 TO 0500 EACH DAY
WEEKENDS - FRIDAY 1800 TO MONDAY 0500

ARCHITECT/ENGINEERS:

COX DESIGN ASSOCIATES

ARCHITECTURE PLANNING INTERIORS

Austin 5121 Bee Caves Road, Suite 203 Austin, Texas 78746 T:512 - 327 - 4149 F:512 - 327 - 7679 coxdesign@austin.rr.com

Chicago 345 N. Canal St. Suite 701 Chicago, IL 60605 T:312 - 698 - 3880 F:312 - 454 - 9439 bcocx@coxtd.com

DIMENSIONING CONVENTIONS

1. EXCEPT WHERE DIRECTED TO PLACE ITEMS OF THE WORK AT THE "APPROXIMATE LOCATION SHOWN," DO NOT SCALE DRAWINGS FOR DIMENSIONAL INFORMATION
2. ALL ELEMENTS OF THE DOCUMENTS MAY NOT BE DRAWN TO EXACT SCALE. ALL DIMENSIONS REQUESTED ARE SHOWN (OR MAY BE DERIVED FROM THOSE SHOWN OR NOTED) ON THE FLOOR PLANS. DETAIL PLANS, ELEVATIONS, SECTIONS, SCHEDULES, CONFIGURATION DETAILS, AND SPECIFICATIONS. SEE THE NOTES BELOW AND SYMBOLS FOR DIMENSIONING CONVENTIONS USED ON THIS PROJECT.
3. EXCEPT WHERE SPECIFICALLY NOTED TO THE CONTRARY, ALL DIMENSIONS SHOWN ON THE ARCHITECTURAL DRAWINGS CONFORM TO THE FOLLOWING CONVENTIONS.
A. DIMENSIONS UTILIZING THE "CENTERLINE" SYMBOL ARE MEASURED TO:
• CENTERLINE OF PARTITION ASSEMBLY (EXCLUSIVE OF ANY APPLIED FINISHES HAVING THICKNESS WHICH MAY BE ADDED TO SUCH WALLS) AT PARTITIONS FRAMED WITH METAL STUDS. REFER TO "PARTITION SCHEDULE" TO DETERMINE THICKNESS OF EACH PARTITION TYPE.
• CENTERLINE OF DOOR, WINDOW, OR LOUVER OPENING.
• CENTERLINE OF OTHER FEATURES AS INDICATED.
B. DIMENSIONS UTILIZING THE "FACE OF" SYMBOL ARE MEASURED TO:
• FACE OF PARTITION ASSEMBLY (EXCLUSIVE OF ANY APPLIED FINISHES HAVING THICKNESS WHICH MAY BE ADDED TO SUCH WALL) AS DEFINED BY THE PARTITION SCHEDULE. UNLESS NOTED AS A "FACE OF FINISH" OR "CLEAR" DIMENSION, DIMENSIONS ARE NOT MEASURED TO THE FACE OF APPLIED FINISH. REFER TO THE "PARTITION SCHEDULE" TO DETERMINE THE THICKNESS OF EACH PARTITION TYPE.
C. WHERE "EQUAL" DIMENSIONS ARE USED ON REFLECTED CEILING PLANS TO LOCATE CEILING GRID WORK POINTS, MEASURE DIMENSIONS TO:
• EDGE OF THE INDICATED CEILING AT THE FACE OF THE ADJACENT APPLIED FINISH MEASURED AT THE PLANE OF THE CEILING.
• CAUTION: DUE TO THE POSSIBLE APPLICATION OF APPLIED FINISHES - THICKNESS OF WHICH MAY VARY BETWEEN FLOOR AND CEILING AND IS NOT ACCOUNTED FOR (EXCEPT AS INDICATED BY "FOF" OR "CLEAR") BY THE DIMENSION SHOWN ON THE FLOOR PLANS - THE CONTRACTOR MUST ADJUST AS NECESSARY, THE FLOOR PLAN DIMENSIONS TO REFLECT THE ACTUAL DIMENSIONS FOUND AT PLANE OF THE CEILING.
4. WHERE WALLS AND/OR PARTITIONS OF UNEQUAL THICKNESS ABUT, ALIGN EXPOSED FACES, UNLESS OTHERWISE NOTED.
5. WHERE OPENINGS IN WALLS (SUCH AS INTERIOR WINDOWS OR DOORS) ARE NOT DIMENSIONED BUT SHOWN AS BEING IN THE CENTER OF A GIVEN WALL SURFACE, LOCATE OPENINGS AS GRAPHICALLY REPRESENTED.

LOCATION MAP

NTS

PROJECT INFORMATION

CODES:

INTERNATIONAL BUILDING CODE

OCCUPANCY:

GROUP I-2

TYPE OF CONSTRUCTION:

UNPROTECTED, TYPE I-332 FULLY SPRINKLERED

PROJECT AREA:

2ND FLOOR RENOVATION: 6,320 GSF

BUILDING IS FULLY SPRINKLERED

Revisions:

Date:

CONSULTANTS:

ARCHITECT/ENGINEERS:

COX DESIGN ASSOCIATES

ARCHITECTURE PLANNING INTERIORS

Austin 5121 Bee Caves Road, Suite 203 Austin, Texas 78746 T:512 - 327 - 4149 F:512 - 327 - 7679 coxdesign@austin.rr.com

Chicago 345 N. Canal St. Suite 701 Chicago, IL 60605 T:312 - 698 - 3880 F:312 - 454 - 9439 bcocx@coxtd.com

Approved: Assistant Director

Approved: Chief of Staff

Approved: Chief, Engineering

Approved: Service Chief

Approved: Service Chief

Approved: Service Chief

Approved: Chief, Bio-Med

Approved: Chief, EMS

Approved: Chief, Infection Control

Approved: Chief, IT

Approved: Chief, M&O

Approved: Chief, Police

Approved: Chief, Safety

Approved: Chief

Approved: Chief

Drawing Title

GENERAL INFORMATION/SYMBOLS/ LOCATION

Location

CAPTAIN JAMES A. LOVELL FHCC 3001 GREEN BAY ROAD NORTH CHICAGO, IL 60064

Project Name

REPLACE SURGICAL FLOORING

Building Number

133-2C

Checked

RHC

Drawn

RAT

Project Number

556-13-106

Date

AUGUST 7, 2013

Drawing Number

133-GI-002

Dwg. of

Office of Construction and Facilities Management

Department of Veterans Affairs

1 2 3 4 5 6 7 8 9

ARCHITECTURAL ABBREVIATIONS

A	<div>three inches = one foot</div>	A LABEL	CLASS A DOOR	COL	COLUMN	FLR SK	FLOOR SINK	LS	LUMP SUM	PO	PURCHASE ORDER POST OFFICE	STRUCT STL	STRUCTURAL STEEL
		A/C	AIR CONDITION	COM	COMMON	FLOOR	FLUORESCENT	LT	LIGHT	POLY	POLYETHYLENE (PLASTIC)	SUB	SUBSTITUTE
		A/C UNIT	AIR CONDITIONING UNIT	COMB	COMBINATION, COMBINED	FLUOR FIX	FLUORESCENT FIXTURE	LT GA	LIGHT GAGE	PR	PREFABRICATE	SURF	SURFACE
B	<div>one and one half inches = one foot</div>	A/E	ARCHITECT/ENGINEER	COMM	COMMUNICATION	FM	FACTORY MUTUAL	LTG	LIGHTWEIGHT	PRCST	PRECAST	SUSP	SUSPEND
		A/MA	AMERICAN ARCHITECTURAL MANUFACTURERS ASSOCIATION	COMP	COMPONENT	FM G	FACTORY MUTUAL GLOBAL	LTG AB	LIGHTING	PRCST AB	PRECAST	SUSP CLG	SUSPENDED CEILING
		AB	ANCHOR BOLT	CONC	CONCRETE	FO	FINISHED OPENING	LTNG	LIGHTNING	PREFIN	PREFINISH	SV	SHEET VINYL
C	<div>three quarters inch = one</div>	ABC	ASBESTOS BASE COURSE	CONC FLR	CONCRETE FLOOR	FOC	FACE OF CONCRETE OR FACE OF CURB	LVD	LOUVERED	PRELIM	PRELIMINARY	SW	SWITCH
		AC	ASBESTOS CEMENT OR ASPHALTIC CONCRETE	COND	CONDENSER OR CONDITION	FOM	FACE OF MASONRY	LVR	LOUVER	PREP	PREPARATION	SWDR	SWINGING DOOR
		ACI	AMERICAN CONCRETE INSTITUTE	CONF	CONFERENCE	FOS	FACE OF SLAB OR FACE OF STUD	LWC	LIGHTWEIGHT CONCRETE	PRESS	PRESSURE	SYM	SYMBOL
D	<div>one half inch = one foot</div>	ACM	ASBESTOS CONTAINING MATERIAL	CONN	CONNECT	FOS CNT	FACE OF STUD	LWIC	LIGHTWEIGHT INSULATING CONCRETE LAYER	PREV	PREVIOUS	SYNTH	SYNTHETIC
		ACP	ACRYLIC GLAZING	CONSTR	CONSTRUCTION	FOW	FACE OF WALL	LYR	LAYER	PRMG	PREMOLD	SYSTM	SYSTEM
		ACS DR	ACCESS DOOR	CONT	CONTINUE	FP	FIRE PROTECTION OR FIREPROOF	MACH	MACHINE	PRMLD	PREMOLDED	T&G	TONGUE AND GROOVE
E	<div>one quarter inch = one foot</div>	ACS FLR	ACCESS FLOOR	COORD	COORDINATE	FM	FEET PER SECOND	MACH RM	MACHINE ROOM	PROJ	PROJECT	T&M	TIME AND MATERIALITY
		ACS PNL	ACCESS PANEL	CORR	CORRIDOR	FPS	FEET PER SECOND	MAINT	MAINTENANCE	PROP	PROPOSE	TB	THROUGH BOLT OR TOWEL BAR
		ACST	ACOUSTIC	CORR	CORRIDOR	FR	FIRE RATING, FIRE RESISTANT, OR FRAME	MAN	MANUAL	PSI	POUNDS PER SQUARE INCH	TCA	TILE COUNCIL OF AMERICA
F	<div>one eighth inch = one foot</div>	AD	AREA DRAIN	CSG	CONCRETE SPLASH BLOCK	FR SSK	FRUSHING RIM SINK	MATV	MATERIAL	PT	PAINT	TECH	TECHNICAL
		ADA	AMERICANS WITH DISABILITIES ACT	CSP	CARPET	FREQ	FREQUENCY	MAX	MAXIMUM	PVC	POLYVINYL CHLORIDE (PLASTIC)	TEMP	TEMPERATURE OR TEMPORARY
		ADDL	ADDITIONAL	CSG	CASING	FRP	FIBERGLASS REINFORCED PLASTIC	MCB	MACHINE BOLT	PTD	PAPER TOWEL DISPENSER	TER	TERRAZZO
G	<div>one inch = one foot</div>	ADDN	ADDITION	CSG	CONCRETE SPLASH BLOCK	FRZ	FREEZER	MD	DECK	PTN	PARTITION	THD	THREAD
		ADH	ADHESIVE	CSG	CASING	FRZ	FREEZER	MEAS	MECHANICAL ENGINEER	PVN	PAVING	THD	THREAD
		ADJ	ADJACENT, ADJOINING, OR ADJUSTABLE	CSG	CASING	FRZ	FREEZER	MECH RM	MECHANICAL ROOM	PWR	POWER	THD	THREAD
H	<div>one quarter inch = one foot</div>	ADMIN	ADMINISTRATION	CSK	COUNTER SUNK	FT	FEET OR FOOT	MECH	MECHANICAL	QA	QUALITY ASSURANCE	THK	THICKNESS
		ADB	AUTOMATIC DOOR BOTTOM	CSMT	CASEMENT	FTG	FOOTING	MECH RM	MECHANICAL ROOM	QC	QUALITY CONTROL	THK	THICKNESS
		AF	ABOVE FINISHED COUNTER	CSWK	CASEWORK	FURN	FURNISH OR FURNITURE	MED	MEDIUM MEDICAL	QRY	QUARRY	THRES	THRESHOLD
I	<div>one inch = one foot</div>	AFB	ABOVE FINISHED FLOOR	CT	CERAMIC TILE	FUT	FUTURE	MED	MEDIUM MEDICAL	QT	QUARRY TILE	THRU	THROUGH
		AFG	ABOVE FINISHED GRADE	CTB	CERAMIC TILE BASE	FUT	FUTURE	MEK	METHYL ETHYL KETONE	QTB	QUARRY TILE BASE	THRUOUT	THROUGHOUT
		AFS	ABOVE FINISHED SLAB	CTF	CERAMIC TILE FLOOR	FWC	FABRIC WALLCOVERING	MEL	MELAMINE	QTF	QUARRY TILE FLOOR	T&G	TACKBOARD
J	<div>one quarter inch = one foot</div>	AGA	AMERICAN GAS ASSOCIATION	CTG	COATING	GA	GAGE OR GYPSUM ASSOCIATION	MEMB	MEMBRANE	QTR	QUARTER	TMPD	TEMPERED
		AGC	ASSOCIATED GENERAL CONTRACTORS	CTR	CENTER CONTOUR	GAL	GALLON	MEMO	MEMORANDUM	QTY	QUANTITY	TMPD GL	TEMPERED GLASS
		AGGR	AGGREGATE	CUL	CULVERT	GALV	GALVANIC OR GALVANIZED	MEZZ	MEZZANINE	QUAD	QUAD	TN	TENSILE
K	<div>one quarter inch = one foot</div>	AHU	AUTHORITY HAVING JURISDICTION	CUV	CABLE TELEVISION	GALV STL	GALVANIZED STEEL	ME	MILL FINISH	QUAL	QUALITY	TO	TOP OF
		AHU	AIR HANDLING UNIT	CUT	CURTAIN	GB	GRAB BAR	MFG	MANUFACTURING	R	RADIUS OR RISER	TO FDN	TOP OF FOUNDATION
		AIA	AMERICAN INSTITUTE OF ARCHITECTS	CU FT	CUBIC FEET	GB	GRAB BAR	MFR	MANUFACTURER'S RECOMMENDATION	RA	RETURN AIR	TOB	TOP OF BEAM
L	<div>one quarter inch = one foot</div>	AISC	AMERICAN INSTITUTE OF STEEL CONSTRUCTION	CU YD	CUBIC YARD	GD	GUARD	MGT	MANAGEMENT	RAD	RADIATOR	TOP	TOP OF PARAPET
		ALT	ALTERNATE	CURT	CURTAIN	GDR	GUARD RAIL	MH	MANHOLE	RB	RESILIENT BASE OR RUBBER BASE	TOP	TOP OF PARAPET
		ALT NO	ALTERNATE NUMBER	CYL	CYLINDER	GFRG	GLASS-FIBER-REINFORCED CONCRETE	MIC	MICROPHONE	RBM	REINFORCED BRICK MASONRY	TOS	TOP OF STEEL
M	<div>one quarter inch = one foot</div>	ALUM	ALUMINUM	CYL L	CYLINDER LOCK	GFRG	GLASS-FIBER-REINFORCED CONCRETE	MID	MIDDLE	RBR	RUBBER	TOW	TOP OF WALL
		AMP	AMPERE	D	DEPTH OR PENNY (NAIL)	GFRG	GLASS-FIBER-REINFORCED CONCRETE	MID STD	MIDSTANDARD	RCP	REFLECTED CEILING PLAN	TPD	TOILET PAPER DISPENSER
		AMT	AMOUNT	D	DEPTH OR PENNY (NAIL)	GFRG	GLASS-FIBER-REINFORCED CONCRETE	MIN	MINIMUM	RCS	REFLECTED CEILING PLAN	TPH	TOILET PAPER HOLDER
N	<div>one quarter inch = one foot</div>	ANOD	ANODIZE	D	DEPTH OR PENNY (NAIL)	GFRG	GLASS-FIBER-REINFORCED CONCRETE	MIN	MINIMUM	RCS	REFLECTED CEILING PLAN	TPH	TOILET PAPER HOLDER
		ANSI	AMERICAN NATIONAL STANDARDS INSTITUTE	D	DEPTH OR PENNY (NAIL)	GFRG	GLASS-FIBER-REINFORCED CONCRETE	MIN	MINIMUM	RCS	REFLECTED CEILING PLAN	TPH	TOILET PAPER HOLDER
		ANT	ANTENNA	D	DEPTH OR PENNY (NAIL)	GFRG	GLASS-FIBER-REINFORCED CONCRETE	MIN	MINIMUM	RCS	REFLECTED CEILING PLAN	TPH	TOILET PAPER HOLDER
O	<div>one quarter inch = one foot</div>	APA	AMERICAN PLYWOOD ASSOCIATION	D	DEPTH OR PENNY (NAIL)	GFRG	GLASS-FIBER-REINFORCED CONCRETE	MIN	MINIMUM	RCS	REFLECTED CEILING PLAN	TPH	TOILET PAPER HOLDER
		APPROX	APPROXIMATE	D	DEPTH OR PENNY (NAIL)	GFRG	GLASS-FIBER-REINFORCED CONCRETE	MIN	MINIMUM	RCS	REFLECTED CEILING PLAN	TPH	TOILET PAPER HOLDER
		APT	APARTMENT	D	DEPTH OR PENNY (NAIL)	GFRG	GLASS-FIBER-REINFORCED CONCRETE	MIN	MINIMUM	RCS	REFLECTED CEILING PLAN	TPH	TOILET PAPER HOLDER
P	<div>one quarter inch = one foot</div>	ARCH	ARCHITECT	D	DEPTH OR PENNY (NAIL)	GFRG	GLASS-FIBER-REINFORCED CONCRETE	MIN	MINIMUM	RCS	REFLECTED CEILING PLAN	TPH	TOILET PAPER HOLDER
		ASB	ASBESTOS	D	DEPTH OR PENNY (NAIL)	GFRG	GLASS-FIBER-REINFORCED CONCRETE	MIN	MINIMUM	RCS	REFLECTED CEILING PLAN	TPH	TOILET PAPER HOLDER
		ASB	ASBESTOS	D	DEPTH OR PENNY (NAIL)	GFRG	GLASS-FIBER-REINFORCED CONCRETE	MIN	MINIMUM	RCS	REFLECTED CEILING PLAN	TPH	TOILET PAPER HOLDER
Q	<div>one quarter inch = one foot</div>	ASB	ASBESTOS	D	DEPTH OR PENNY (NAIL)	GFRG	GLASS-FIBER-REINFORCED CONCRETE	MIN	MINIMUM	RCS	REFLECTED CEILING PLAN	TPH	TOILET PAPER HOLDER
		ASB	ASBESTOS	D	DEPTH OR PENNY (NAIL)	GFRG	GLASS-FIBER-REINFORCED CONCRETE	MIN	MINIMUM	RCS	REFLECTED CEILING PLAN	TPH	TOILET PAPER HOLDER
		ASB	ASBESTOS	D	DEPTH OR PENNY (NAIL)	GFRG	GLASS-FIBER-REINFORCED CONCRETE	MIN	MINIMUM	RCS	REFLECTED CEILING PLAN	TPH	TOILET PAPER HOLDER
R	<div>one quarter inch = one foot</div>	ASB	ASBESTOS	D	DEPTH OR PENNY (NAIL)	GFRG	GLASS-FIBER-REINFORCED CONCRETE	MIN	MINIMUM	RCS	REFLECTED CEILING PLAN	TPH	TOILET PAPER HOLDER
		ASB	ASBESTOS	D	DEPTH OR PENNY (NAIL)	GFRG	GLASS-FIBER-REINFORCED CONCRETE	MIN	MINIMUM	RCS	REFLECTED CEILING PLAN	TPH	TOILET PAPER HOLDER
		ASB	ASBESTOS	D	DEPTH OR PENNY (NAIL)	GFRG	GLASS-FIBER-REINFORCED CONCRETE	MIN	MINIMUM	RCS	REFLECTED CEILING PLAN	TPH	TOILET PAPER HOLDER
S	<div>one quarter inch = one foot</div>	ASB	ASBESTOS	D	DEPTH OR PENNY (NAIL)	GFRG	GLASS-FIBER-REINFORCED CONCRETE	MIN	MINIMUM	RCS	REFLECTED CEILING PLAN	TPH	TOILET PAPER HOLDER
		ASB	ASBESTOS	D	DEPTH OR PENNY (NAIL)	GFRG	GLASS-FIBER-REINFORCED CONCRETE	MIN	MINIMUM	RCS	REFLECTED CEILING PLAN	TPH	TOILET PAPER HOLDER
		ASB	ASBESTOS	D	DEPTH OR PENNY (NAIL)	GFRG	GLASS-FIBER-REINFORCED CONCRETE	MIN	MINIMUM	RCS	REFLECTED CEILING PLAN	TPH	TOILET PAPER HOLDER
T	<div>one quarter inch = one foot</div>	ASB	ASBESTOS	D	DEPTH OR PENNY (NAIL)	GFRG	GLASS-FIBER-REINFORCED CONCRETE	MIN	MINIMUM	RCS	REFLECTED CEILING PLAN	TPH	TOILET PAPER HOLDER
		ASB	ASBESTOS	D	DEPTH OR PENNY (NAIL)	GFRG	GLASS-FIBER-REINFORCED CONCRETE	MIN	MINIMUM	RCS	REFLECTED CEILING PLAN	TPH	TOILET PAPER HOLDER
		ASB	ASBESTOS	D	DEPTH OR PENNY (NAIL)	GFRG	GLASS-FIBER-REINFORCED CONCRETE	MIN	MINIMUM	RCS	REFLECTED CEILING PLAN	TPH	TOILET PAPER HOLDER
U	<div>one quarter inch = one foot</div>	ASB	ASBESTOS	D	DEPTH OR PENNY (NAIL)	GFRG	GLASS-FIBER-REINFORCED CONCRETE	MIN	MINIMUM	RCS	REFLECTED CEILING PLAN	TPH	TOILET PAPER HOLDER
		ASB	ASBESTOS	D	DEPTH OR PENNY (NAIL)	GFRG	GLASS-FIBER-REINFORCED CONCRETE	MIN	MINIMUM	RCS	REFLECTED CEILING PLAN	TPH	TOILET PAPER HOLDER
		ASB	ASBESTOS	D	DEPTH OR PENNY (NAIL)	GFRG	GLASS-FIBER-REINFORCED CONCRETE	MIN	MINIMUM	RCS	REFLECTED CEILING PLAN	TPH	TOILET PAPER HOLDER
V	<div>one quarter inch = one foot</div>	ASB	ASBESTOS	D	DEPTH OR PENNY (NAIL)	GFRG	GLASS-FIBER-REINFORCED CONCRETE	MIN	MINIMUM	RCS	REFLECTED CEILING PLAN	TPH	TOILET PAPER HOLDER
		ASB	ASBESTOS	D	DEPTH OR PENNY (NAIL)	GFRG	GLASS-FIBER-REINFORCED CONCRETE	MIN	MINIMUM	RCS	REFLECTED CEILING PLAN	TPH	TOILET PAPER HOLDER
		ASB	ASBESTOS	D	DEPTH OR PENNY (NAIL)	GFRG	GLASS-FIBER-REINFORCED CONCRETE	MIN	MINIMUM	RCS	REFLECTED CEILING PLAN	TPH	TOILET PAPER HOLDER
W	<div>one quarter inch = one foot</div>	ASB	ASBESTOS	D	DEPTH OR PENNY (NAIL)	GFRG	GLASS-FIBER-REINFORCED CONCRETE	MIN	MINIMUM	RCS	REFLECTED CEILING PLAN	TPH	TOILET PAPER HOLDER
		ASB	ASBESTOS	D	DEPTH OR PENNY (NAIL)	GFRG	GLASS-FIBER-REINFORCED CONCRETE	MIN	MINIMUM	RCS	REFLECTED CEILING PLAN	TPH	TOILET PAPER HOLDER
		ASB	ASBESTOS	D	DEPTH OR PENNY (NAIL)	GFRG	GLASS-FIBER-REINFORCED CONCRETE	MIN	MINIMUM	RCS	REFLECTED CEILING PLAN	TPH	TOILET PAPER HOLDER
X	<div>one quarter inch = one foot</div>	ASB	ASBESTOS	D	DEPTH OR PENNY (NAIL)	GFRG	GLASS-FIBER-REINFORCED CONCRETE	MIN	MINIMUM	RCS	REFLECTED CEILING PLAN	TPH	TOILET PAPER HOLDER
		ASB	ASBESTOS	D	DEPTH OR PENNY (NAIL)	GFRG	GLASS-FIBER-REINFORCED CONCRETE	MIN	MINIMUM	RCS	REFLECTED CEILING PLAN	TPH	TOILET PAPER HOLDER
		ASB	ASBESTOS	D	DEPTH OR PENNY (NAIL)	GFRG	GLASS-FIBER-REINFORCED CONCRETE	MIN	MINIMUM	RCS	REFLECTED CEILING PLAN	TPH	TOILET PAPER HOLDER
Y	<div>one quarter inch = one foot</div>	ASB	ASBESTOS	D	DEPTH OR PENNY (NAIL)	GFRG	GLASS-FIBER-REINFORCED CONCRETE	MIN	MINIMUM	RCS	REFLECTED CEILING PLAN	TPH	TOILET PAPER HOLDER
		ASB	ASBESTOS	D	DEPTH OR PENNY (NAIL)	GFRG	GLASS-FIBER-REINFORCED CONCRETE	MIN	MINIMUM	RCS	REFLECTED CEILING PLAN	TPH	TOILET PAPER HOLDER
		ASB	ASBESTOS	D	DEPTH OR PENNY (NAIL)	GFRG	GLASS-FIBER-REINFORCED CONCRETE	MIN	MINIMUM	RCS	REFLECTED CEILING PLAN	TPH	TOILET PAPER HOLDER
Z	<div>one quarter inch = one foot</div>	ASB	ASBESTOS	D	DEPTH OR PENNY (NAIL)	GFRG	GLASS-FIBER-REINFORCED CONCRETE	MIN	MINIMUM	RCS	REFLECTED CEILING PLAN	TPH	TOILET PAPER HOLDER
		ASB	ASBESTOS	D	DEPTH OR PENNY (NAIL)	GFRG	GLASS-FIBER-REINFORCED CONCRETE	MIN	MINIMUM	RCS	REFLECTED CEILING PLAN	TPH	TOILET PAPER HOLDER
		ASB	ASBESTOS	D	DEPTH OR PENNY (NAIL)	GFRG	GLASS-FIBER-REINFORCED CONCRETE	MIN	MINIMUM	RCS	REFLECTED CEILING PLAN	TPH	TOILET PAPER HOLDER

BUILDING IS FULLY SPRINKLERED

CONSULTANTS:		ARCHITECT/ENGINEERS:		Approved: Assistant Director			Approved: Chief of Staff			Approved: Chief, Engineering			Drawing Title			Project Name			Project Number			Office of Construction and Facilities Management															
		COX DESIGN ASSOCIATES		Approved: Service Chief			Approved: Service Chief			Approved: Service Chief			ARCHITECTURAL ABBREVIATIONS			REPLACE SURGICAL FLOORING			556-13-106																		
				Approved: Chief, Bio-Med			Approved: Chief, EMS			Approved: Chief, Infection Control									Date																		
				Approved: Chief, IT			Approved: Chief, M&O			Approved: Chief, Police									AUGUST 7, 2013																		
Revisions:				ARCHITECTURE		PLANNING		INTERIORS		Approved: Chief, Safety			Approved: Chief			Approved: Chief			Drawing Number			133-AI-001															
				Austin 5121 Bee Caves Road, Suite 203 Austin, Texas 78746 T:512 - 327 - 4149 F:512 - 327 - 7679 coxdesign@austin.rr.com		Chicago 345 N. Canal St. Suite 701 Chicago, IL 60605 T:312 - 698 - 3880 F:312 - 454 - 9439 cbcoo@coxtd.com											Building Number			133-2C			Checked			RHC			Drawn			RAT			Dwg. of		

three inches = one foot

one and one half inches = one foot

one inch = one foot

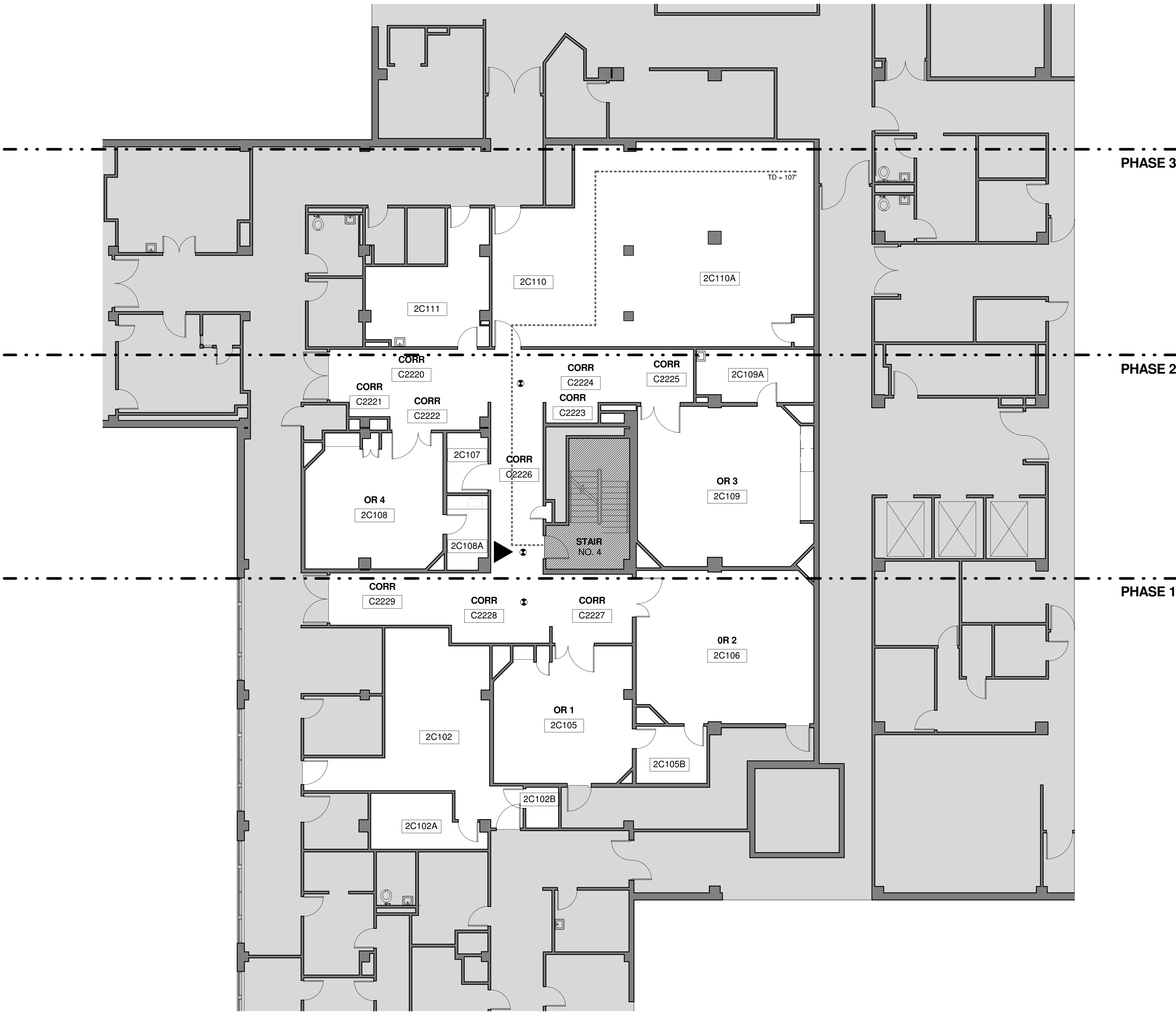
three quarters inch = one foot

one half inch = one foot

three eighths inch = one foot

one quarter inch = one foot

one eighth inch = one foot



1

2ND FLOOR - LIFE SAFETY PLAN

SCALE: 1/8" = 1'-0"

N

FIRE PROTECTION - SYMBOLS LEGEND:

- AREA IN CONTRACT
- 2 HOUR EXIT PASSAGE WAY / EXIT STAIR
- AREA NOT IN CONTRACT
- EXIT
- PHASING
- DOUBLE SIDED EXIT SIGNAGE CEILING MOUNTED
- TRAVEL DISTANCE
- MEASURED DISTANCE
- CEILING SMOKE DETECTOR
- COMBINATION VOICE EVACUATION SPEAKER / STROBE UNIT
- ONE HOUR RATING, 45 MINUTE "C" LABEL DOORS
- ONE HOUR RATED SMOKE BARRIER, 20 MINUTE DOORS
- TWO HOUR RATING, 90 MINUTE "B" LABEL DOORS
- TWO HOUR RATED SMOKE BARRIER, 90 MINUTE DOORS
- THREE HOUR RATING
- SMOKE TIGHT CORRIDOR WALL CONSTRUCTION SHALL BE SMOKE TIGHT, WALL IS NOT RATED

LIFE SAFETY PLAN - NOTES

- A. MAINTAIN FIRE EXTINGUISHER LOCATIONS DURING CONSTRUCTION
- B. MAINTAIN RATING ON SHAFTS DURING CONSTRUCTION
- C. ALL EXIT DOORS TO REMAIN UNLOCKED DURING CONSTRUCTION
- D. WORK SHALL BE PERFORMED DURING THE FOLLOWING HOURS:
MONDAY THROUGH THURSDAY - 8:00 PM TO 5:00 AM EACH DAY
WEEKENDS - FRIDAY 6:00 PM TO MONDAY 5:00 AM

CODE SUMMARY

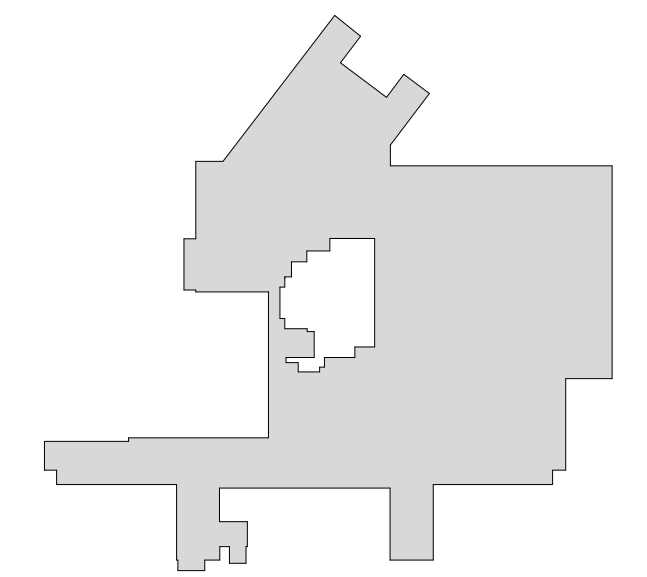
INTERNATIONAL BUILDING CODE 2012
NFPA 101 LIFE SAFETY CODE (LSC) 2012
INTERNATIONAL MECHANICAL CODE 2012
NATIONAL ELECTRICAL CODE 2011
UNIFORM PLUMBING CODE 2012
INTERNATIONAL ENERGY CONSERVATION CODE 2012
FIRE PROTECTION DESIGN GUIDES, USDVA 2011

FIRE PROTECTION SYSTEMS:
-WET-PIPE SPRINKLER SYSTEM
-FIRE ALARM NOTIFICATION SYSTEM
-AUTOMATIC SMOKE DETECTION

BUILDING CONSTRUCTION TYPE:
-TYPE IIA

PHASING NOTE

NOTE: PHASING SHOWN IS ARCHITECT'S SUGGESTION ONLY. CONTRACTOR IS RESPONSIBLE FOR COORDINATING AND SEQUENCING ALL CONSTRUCTION AND PHASING WITH THE COR AND INFECTION CONTROL DEPARTMENT AND IS RESPONSIBLE FOR MAINTAINING INTERIM LIFE SAFETY REQUIREMENTS FOR EGRESS DURING ALL PHASES OF CONSTRUCTION. FHCC ACCESS TO, AND USE OF, OPERATING ROOMS NOT UNDER CONSTRUCTION MUST BE MAINTAINED AT ALL TIMES. SEE DETAIL 6/AS-501 FOR TEMPORARY CONSTRUCTION WALL.



KEY PLAN

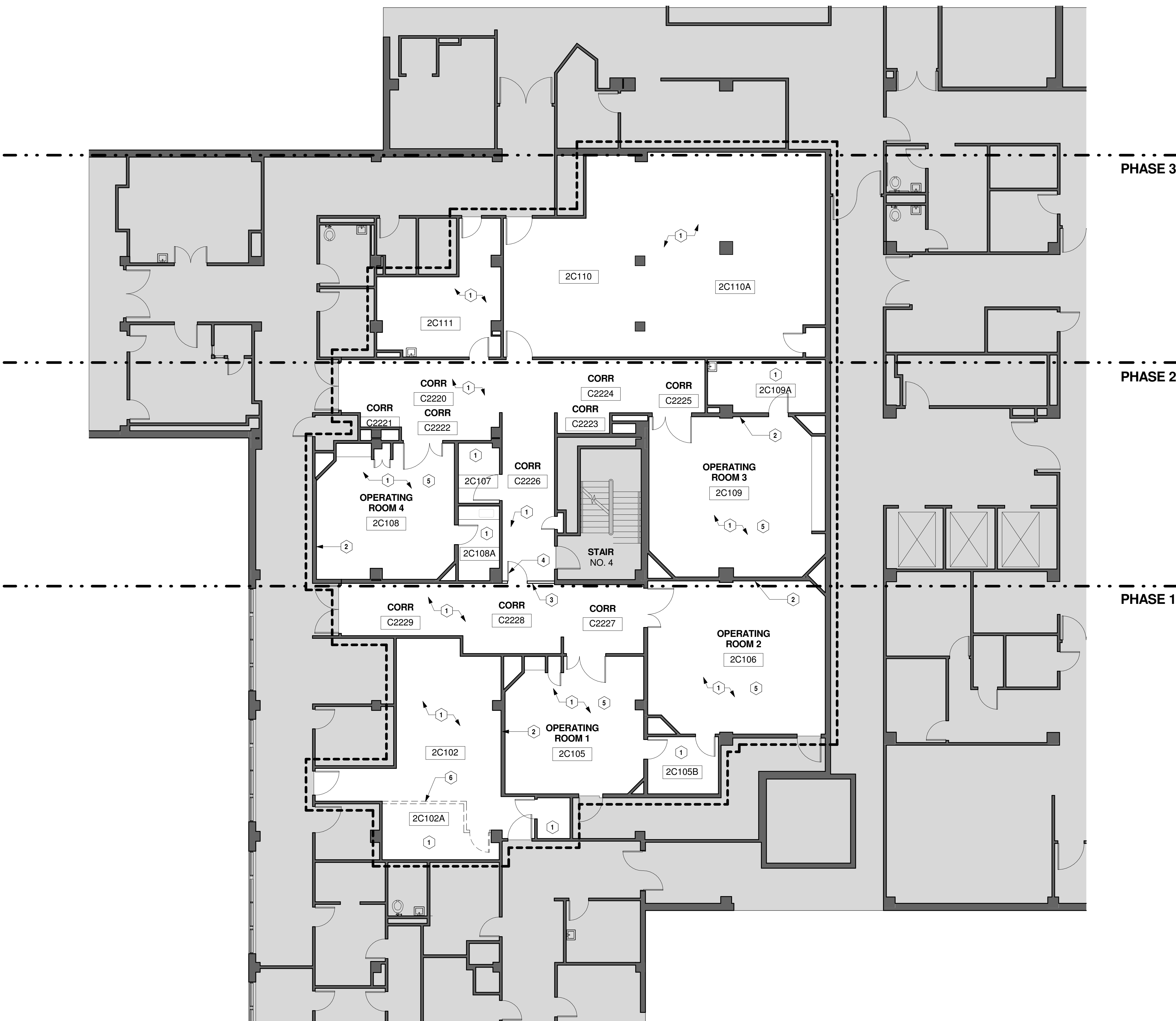
BUILDING IS
FULLY
SPRINKLERED

Revisions:		Date:		CONSULTANTS:		ARCHITECT/ENGINEERS: COX DESIGN ASSOCIATES		Approved: Assistant Director		Approved: Chief of Staff		Approved: Chief, Engineering		Drawing Title LIFE SAFETY PLAN		Project Name REPLACE SURGICAL FLOORING		Project Number 556-13-106		Office of Construction and Facilities Management	
						ARCHITECTURE PLANNING INTERIORS		Approved: Service Chief		Approved: Service Chief		Approved: Service Chief				Date AUGUST 7, 2013					
								Approved: Chief, Bio-Med		Approved: Chief, EMS		Approved: Chief, Infection Control						Drawing Number 133-AI-101		Department of Veterans Affairs	
								Approved: Chief, IT		Approved: Chief, M&O		Approved: Chief, Police									
								Approved: Chief, Safety		Approved: Chief		Approved: Chief				Building Number 133-2C		Checked RHC		Drawn RAT	
																		Dwg. of			

1
2
3
4
5
6
7
8
9

three inches = one foot
one and one half inches = one foot
one inch = one foot
three quarters inch = one foot
one half inch = one foot
three eighths inch = one foot
one quarter inch = one foot
one eighth inch = one foot

A
B
C
D
E
F



1 2ND FLOOR - DEMOLITION PLAN
SCALE: 1/8" = 1'-0"

N

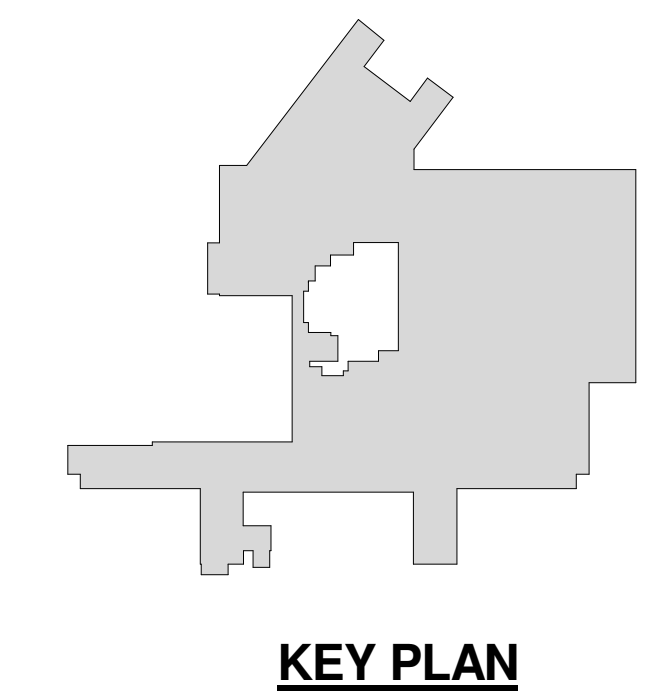
GRAPHIC LEGEND

	AREA IN CONTRACT		AREA NOT IN CONTRACT
	DASHED LINE DENOTES ITEM TO BE DEMOLISHED		LINE DENOTES ITEM TO REMAIN
	EXISTING WALLS TO BE REMOVED		EXISTING WALLS TO REMAIN
	EXISTING DOOR TO BE REMOVED		EXISTING DOOR TO REMAIN
	DEMOLITION PLAN NOTE		LIMITS OF CONSTRUCTION
			PHASING

- ### GENERAL NOTES
1. VERIFY ALL DIMENSIONS AND CONDITIONS AT JOB SITE. PORTIONS OF EXISTING CONSTRUCTION MAY HAVE BEEN REMOVED BY OWNER.
 2. REMOVE FLOOR FINISHES, AND MASTIC INCLUDING SETTING BED IN CERAMIC TILE AREAS IF APPLICABLE, WHERE NEW FLOORING IS INDICATED IN ROOM FINISH SCHEDULE.
 3. REMOVE ALL INTERIOR AND WALL MOUNTED ITEMS IN AREAS TO BE REMODELED (REFER TO ROOM FINISH SCHEDULE) INCLUDING BUT NOT LIMITED TO, CABINETRY, EQUIPMENT, LOCKERS, TOILET PARTITIONS, SHELVING HOOKSTRIPS, HANDRAILS, CLOSET POLES, CHALK AND TACK BOARDS, MIRRORS, WALL AND CEILING TRIM, BASE.
 4. REMOVE EXISTING WALL FINISHES IN ROOMS WHERE NEW FINISHES ARE INDICATED IN THE ROOM FINISH SCHEDULE. EXISTING WALLS TO BE PREPARED AS REQUIRED TO ACCEPT NEW SCHEDULED FINISHES.
 5. ALL EXISTING WALL SURFACES IN OPERATING ROOMS ARE TO BE PREPARED FOR INSTALLATION OF NEW TERRAZZO TILE.
 6. REFER TO PLUMBING HVAC AND ELECTRICAL PLANS FOR ADDITIONAL DEMOLITION ITEMS AND NOTES. COORDINATE WORK WITH PLUMBING, HVAC AND ELECTRICAL REQUIREMENTS.
 7. MAINTAIN CONTINUOUS UTILITY SERVICE TO ALL SPACES IN THE BUILDING NOT AFFECTED BY THIS WORK. COORDINATE WITH OWNER ANY DISRUPTION IN SERIES REQUIRED TO PERFORM WORK OR TO MODIFY EXISTING PIPING, DUCTWORK, OR ANY ASSOCIATED EQUIPMENT.
 8. WORK SHALL BE PERFORMED DURING THE FOLLOWING HOURS:
MONDAY THROUGH THURSDAY - 1800 TO 0500 EACH DAY
WEEKENDS - FRIDAY 1800 TO MONDAY 0500
 9. FHCC ACCESS TO, AND USE OF, OPERATING ROOMS NOT UNDER CONSTRUCTION MUST BE MAINTAINED AT ALL TIMES. SEE DETAIL 6/AS-501 FOR TEMPORARY CONSTRUCTION WALL.

- ### SHEET NOTES
- A ALL EXISTING FLOOR FINISH MATERIALS, WALL BASE, AND WAINSCOT MATERIALS ARE TO BE REMOVED AND ALL FLOOR SURFACES TO BE PREPARED FOR INSTALLATION OF NEW FLOOR FINISH.
- B PREPARATION OF CONCRETE SUBFLOOR SURFACE IS TO BE INSPECTED BY CONTRACTOR FOR COMPLIANCE WITH THE INTENT OF THE CONTRACT DOCUMENTS. CONTRACTOR IS TO PROVIDE TO C.O.R. WRITTEN CONFIRMATION THE CONTRACTOR AND FLOORING MANUFACTURER'S CONCURRENCE THE SUBSTRATE IS PROPERLY PREPARED FOR INSTALLATION OF THE FINISH FLOORING.
- C EXISTING DOORS AND FRAMES TO REMAIN. SEE DETAIL 5/AS-501.
- D EXISTING CASEWORK TO REMAIN.
- E CONSTRUCT A DUST-PROOF PARTITION TO SEPARATE AREAS OF CONSTRUCTION FROM ADJACENT OCCUPIED AREAS OUTSIDE SCOPE OF CONSTRUCTION. SEE DETAIL 6/AS-501.
- F PRIOR TO START OF WORK, SEAL ALL HVAC GRILLES AND DIFFUSERS FOR DURATION OF WORK. COORDINATE WITH FHCC.

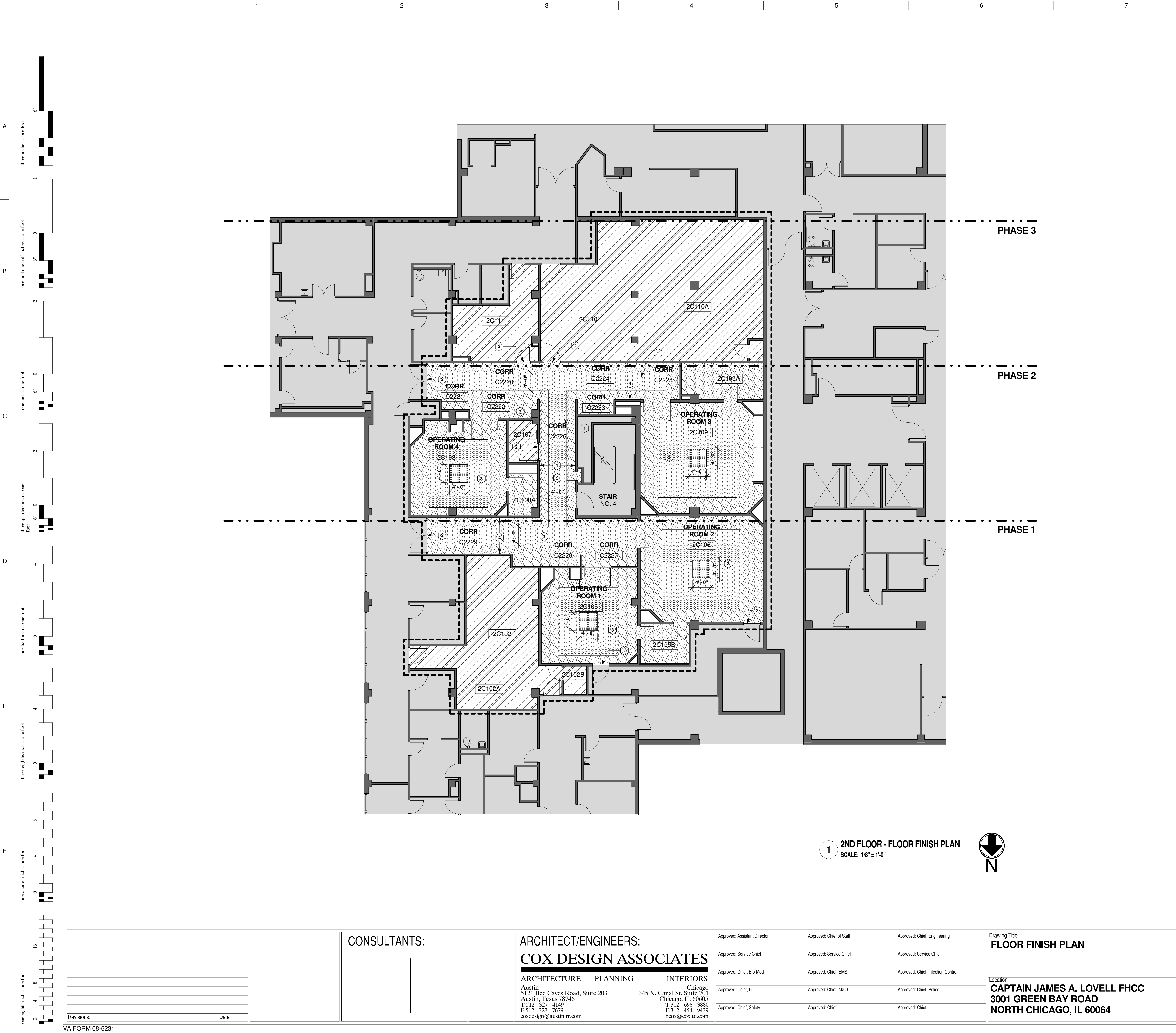
- ### KEY NOTES
- 1 REMOVE EXISTING FLOORING, BASE, AND COVE AND PREPARE SLAB FOR NEW FLOORING FINISH.
 - 2 PREP AND REPAIR WALLS FOR WAINSCOT.
 - 3 TEMPORARY CONSTRUCTION PHASING SEPARATION. REFER TO DETAIL 6/AS-501.
 - 4 PROVIDE LOCKABLE DOOR AND FRAME WITH CLOSER AT TEMPORARY CONSTRUCTION PHASING SEPARATION. CONTRACTOR TO PROVIDE KEYS TO COR.
 - 5 ALL MEDICAL EQUIPMENT TO BE WRAPPED AND SEALED PER COR APPROVAL.
 - 6 WALL AND DOOR TO BE REMOVED BY FHCC AT START OF PHASE 1 WORK.



KEY PLAN

**BUILDING IS
FULLY
SPRINKLERED**

Revisions:		Date:		CONSULTANTS:		ARCHITECT/ENGINEERS: COX DESIGN ASSOCIATES ARCHITECTURE PLANNING INTERIORS Austin 5121 Bee Caves Road, Suite 203 345 N. Canal St. Suite 701 Chicago, IL 60605 T: 512 - 327 - 4149 T: 312 - 698 - 3880 F: 512 - 327 - 7679 F: 312 - 454 - 9439 coxdesign@austin.rr.com bcox@coxstd.com		Approved: Assistant Director Approved: Service Chief Approved: Chief, Bio-Med Approved: Chief, IT Approved: Chief, Safety			Approved: Chief of Staff Approved: Service Chief Approved: Chief, EMS Approved: Chief, M&O Approved: Chief			Approved: Chief, Engineering Approved: Service Chief Approved: Chief, Infection Control Approved: Chief, Police Approved: Chief			Drawing Title DEMOLITION PLAN Location CAPTAIN JAMES A. LOVELL FHCC 3001 GREEN BAY ROAD NORTH CHICAGO, IL 60064		Project Name REPLACE SURGICAL FLOORING		Project Number 556-13-106 Date AUGUST 7, 2013		Drawing Number 133-AD-101 Dwg. of		Office of Construction and Facilities Management Department of Veterans Affairs	
133-2C		RHC		RAT																						



GRAPHIC LEGEND

AREA IN CONTRACT

AREA NOT IN CONTRACT

CONSTRUCTION LIMITS

EXISTING WALL TO REMAIN

PHASING

FLOOR PLAN NOTE

FLOOR TILE

FT-1

FT-2

FT-3

SV-1

GENERAL NOTES

1. VERIFY ALL DIMENSIONS AND CONDITIONS AY JOB SITE.

2. UNLESS NOTED TO BE REMOVED AND DISPOSED, ALL EXISTING ITEMS ARE TO REMAIN. THEY SHALL BE PROTECTED FROM DAMAGE DUE TO CONSTRUCTION ACTIVITIES. ANY EXISTING ITEMS TO REMAIN THAT BECOME DAMAGED DUE TO CONSTRUCTION ACTIVITIES SHALL BE REPAIRED OR REPLACED TO MATCH EXISTING AT NO ADDITIONAL COST TO THE OWNER..

3. MAINTAIN CONTINUOUS UTILITY SERVICE TO ALL SPACES IN THE BUILDING NOT AFFECTED BY THIS WORK. COORDINATE WITH OWNER ANY DISRUPTION IN SERVICES REQUIRED TO PERFORM WORK OR TO MODIFY EXISTING PIPING, DUCTWORK, OR ANY ASSOCIATED EQUIPMENT.

4. THE GENERAL CONTRACTOR SHALL REPORT ANY UNFORESEEN FIELD CONDITIONS, ERRORS, INCONSISTENCIES, OR OMISSIONS DISCOVERED AT ANY TIME DURING THE WORK, UPON SUCH DISCOVERY, THE CONTRACTOR SHALL IMMEDIATELY CONTACT THE C.O.R. FOR CLARIFICATION BEFORE PROCEEDING OR CONTINUING WITH THAT PORTION OF THE WORK OR ANY PORTION RELATED THERE TO.

5. ALL WORK SHALL CONFORM TO ALL APPLICABLE CODES AND STANDARDS INCLUDING THE INTERNATIONAL BUILDING CODE 2012 EDITION, VA MASTER SPECIFICATIONS, AND NFPA 101 2012 EDITION.

6. CONTRACTOR SHALL NOT BARRICADE / BARRIER EMERGENCY EGRESS TO OR FROM THIS AREA. CONTRACTOR SHALL MAINTAIN EXIT TO EXTERIOR DURING THE WORK PROCESS

7. PROVIDE ACCESS TO THE WORK AS DIRECTED BY THE C.O.R. SECURE ACCESS POINT AS SPECIFIED AND DIRECTED BY THE COR. PROVIDE WALK-OFF MATS TO MEET FACILITY INFECTION CONTROL GUIDELINES AT EACH ACCESS POINT.

8. SHADED AREAS ARE GENERALLY OUT OF SCOPE FOR THIS PROJECT.

9. NOTATIONS FOR ITEMS OF WORK APPLY TO EACH AND EVERY GRAPHICAL INDICATION SHOWN ON THE DRAWINGS, WETHER OR NOT NOTED.

10. THE GENERAL CONTRACTOR SHALL VISIT THE SITE, VERIFY FIELD CONDITIONS AND CAREFULLY COMPARE SUCH FIELD CONDITIONS AND OTHER INFORMATION KNOWN TO THE CONTRACTOR WITH CONTRACT DOCUMENTS.

11. THE GENERAL CONTRACTOR SHALL REPORT ANY UNFORESEEN FIELD CONDITIONS, ERRORS, INCONSISTENCIES, OR COMMISSIONS DISCOVERED AT ANY TIME DURING THE WORK. UPON SUCH DISCOVERY, THE CONTRACTOR SHALL IMMEDIATELY CONTRACT THE ARCHITECT AND COR FOR CLARIFICATION BEFORE PROCEEDING OR CONTINUING WITH THAT PORTION OF THE WORK OR ANY PORTION RELATED THERE TO.

12. THE GENERAL CONTRACTOR SHALL NOTIFY THE COR AND THE ARCHITECT OF ANY DISCREPANCIES BETWEEN THE DRAWINGS, NOTES AND ACTUAL FIELD CONDITIONS BEFORE BIDDING AND COMMENCING ANY WORK, AND REQUEST CLARIFICATION IN WRITING.

13. WORK SHALL BE PERFORMED DURING THE FOLLOWING HOURS:
MONDAY THROUGH THURSDAY - 1800 TO 0500 EACH DAY
WEEKENDS - FRIDAY 1800 TO MONDAY 0500

14. FHCC ACCESS TO, AND USE OF, OPERATING ROOMS NOT UNDER CONSTRUCTION MUST BE MAINTAINED AT ALL TIMES. SEE DETAIL 6/AS-501 FOR TEMPORARY CONSTRUCTION WALL.

SHEET NOTES

A CONTRACTOR SHALL REMOVE EXISTING FLOORING MATERIALS ENTIRELY AND PREPARE CONCRETE FLOORS FOR FLOORING MANUFACTURER'S ACCEPTANCE AND AS SPECIFIED FOR INSTALLATION OF NEW FLOORING MATERIALS AS SCHEDULED.

B CONTRACTOR SHALL LEVEL THE EXISTING CONCRETE FLOOR SURFACE IN ACCORDANCE WITH FLOORING MANUFACTURER'S RECOMMENDATIONS.

C CONTRACTOR SHALL INSTALL NEW FLOORING IN PATTERNS INDICATED TO THE GREATEST EXTENT POSSIBLE. PATTERN DEVIATIONS SHALL BE APPROVED BY THE C.O.R. PRIOR TO INSTALLATION.

D TERMINATE OR TRANSITION DISSIMILAR FLOORING MATERIALS AT THE CENTERLINE OF DOORS.

E PROVIDE A FLUSH TRANSITION BETWEEN FLOORING MATERIALS OF VARYING HEIGHTS. PROVIDE TRANSITION STRIPS AS INDICATED ON MATERIAL SCHEDULE.

F DIFFERENT FLOOR MATERIALS ADJACENT TO EACH OTHER ARE TO BE FLUSH. FEATHER AND ALIGN AS REQUIRED.

G TRANSITION STRIPS TO BE PROVIDED AT JOINT OF DIFFERING MATERIALS.

H LOCATE ALL FLOORING TRANSITIONS UNDER DOORS.

KEY NOTES

1 EXPANSION JOINT. SEE DETAIL 3/AS-501

2 TRANSITION STRIP AT DOOR THRESHOLD. SEE DETAIL 2/AS-501

3 CONTRACTOR TO PROVIDE SHOP DRAWINGS OF FLOOR TILE LAYOUT. UNO, COORDINATE POSITION AND DIMENSIONS OF FLOOR TILE AREAS WITH C.O.R.

4 DEDUCTIVE ALTERNATE No.1 - ELIMINATE TERRAZZO TILE WAINSCOT AT CORRIDORS. SEE DETAIL 9/AS-501 FOR COVE BASE DETAIL.

KEY PLAN

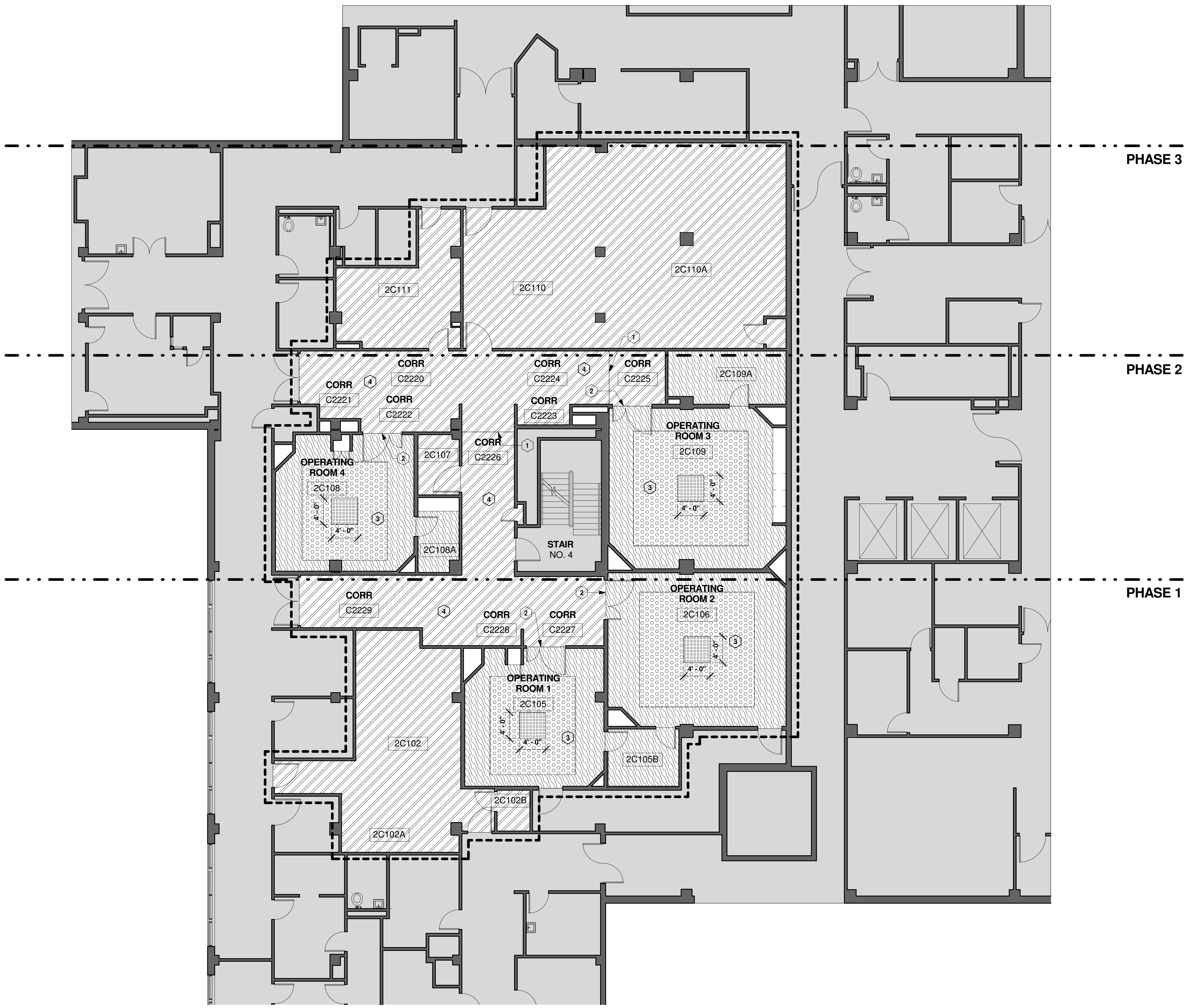
BUILDING IS FULLY SPRINKLERED

CONSULTANTS:		ARCHITECT/ENGINEERS: COX DESIGN ASSOCIATES		Approved: Assistant Director			Approved: Chief of Staff		Approved: Chief, Engineering		Drawing Title FLOOR FINISH PLAN		Project Name REPLACE SURGICAL FLOORING		Project Number 556-13-106		Office of Construction and Facilities Management			
				ARCHITECTURE PLANNING INTERIORS			Approved: Service Chief			Approved: Service Chief				Date AUGUST 7, 2013						
				Austin 5121 Bee Caves Road, Suite 203 Austin, Texas 78746 T:512 - 327 - 4149 F:512 - 327 - 7679 coxdesign@austin.tx.com			345 N. Canal St. Suite 701 Chicago, IL 60605 T:312 - 698 - 3880 F:312 - 454 - 9439 bcox@coxtd.com			Approved: Chief, Bio-Med			Approved: Chief, EMS		Approved: Chief, Infection Control					
							Approved: Chief, IT			Approved: Chief, M&O			Approved: Chief, Police							
							Approved: Chief, Safety			Approved: Chief			Approved: Chief							
Revisions:		Date											Building Number 133-2C		Checked RHC		Drawn RAT		Dwg. of	

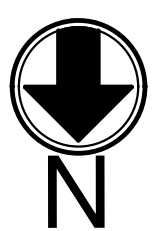
VA FORM 08-6231

123456789

A
three inches = one foot
B
one and one half inches = one foot
C
one inch = one foot
D
three quarters inch = one foot
E
one half inch = one foot
F
three eighths inch = one foot
one quarter inch = one foot
one eighth inch = one foot



1 FLOOR FINISH PLAN - DEDUCTIVE ALTERNATE NO. 2
SCALE: 1/8" = 1'-0"



GRAPHIC LEGEND

AREA IN CONTRACT

AREA NOT IN CONTRACT

CONSTRUCTION LIMITS

EXISTING WALL TO REMAIN

PHASING

FLOOR PLAN NOTE

FLOOR TILE

FT-1

FT-2

FT-3

SV-1

GENERAL NOTES

- VERIFY ALL DIMENSIONS AND CONDITIONS AY JOB SITE.
- UNLESS NOTED TO BE REMOVED AND DISPOSED, ALL EXISTING ITEMS ARE TO REMAIN. THEY SHALL BE PROTECTED FROM DAMAGE DUE TO CONSTRUCTION ACTIVITIES. ANY EXISTING ITEMS TO REMAIN THAT BECOME DAMAGED DUE TO CONSTRUCTION ACTIVITIES SHALL BE REPAIRED OR REPLACED TO MATCH EXISTING AT NO ADDITIONAL COST TO THE OWNER.
- MAINTAIN CONTINUOUS UTILITY SERVICE TO ALL SPACES IN THE BUILDING NOT AFFECTED BY THIS WORK. COORDINATE WITH OWNER ANY DISRUPTION IN SERVICES REQUIRED TO PERFORM WORK OR TO MODIFY EXISTING PIPING, DUCTWORK, OR ANY ASSOCIATED EQUIPMENT.
- THE GENERAL CONTRACTOR SHALL REPORT ANY UNFORESEEN FIELD CONDITIONS, ERRORS, INCONSISTENCIES, OR OMISSIONS DISCOVERED AT ANY TIME DURING THE WORK, UPON SUCH DISCOVERY, THE CONTRACTOR SHALL IMMEDIATELY CONTACT THE C.O.R. FOR CLARIFICATION BEFORE PROCEEDING OR CONTINUING WITH THAT PORTION OF THE WORK OR ANY PORTION RELATED THERE TO.
- ALL WORK SHALL CONFORM TO ALL APPLICABLE CODES AND STANDARDS INCLUDING THE INTERNATIONAL BUILDING CODE 2012 EDITION, VA MASTER SPECIFICATIONS, AND NFPA 101 2012 EDITION.
- CONTRACTOR SHALL NOT BARRICADE / BARRIER EMERGENCY EGRESS TO OR FROM THIS AREA. CONTRACTOR SHALL MAINTAIN EXIT TO EXTERIOR DURING THE WORK PROCESS
- PROVIDE ACCESS TO THE WORK AS DIRECTED BY THE C.O.R. SECURE ACCESS POINT AS SPECIFIED AND DIRECTED BY THE COR. PROVIDE WALK-OFF MATS TO MEET FACILITY INFECTION CONTROL GUIDELINES AT EACH ACCESS POINT.
- SHADED AREAS ARE GENERALLY OUT OF SCOPE FOR THIS PROJECT.
- NOTATIONS FOR ITEMS OF WORK APPLY TO EACH AND EVERY GRAPHICAL INDICATION SHOWN ON THE DRAWINGS, WETHER OR NOT NOTED.
- THE GENERAL CONTRACTOR SHALL VISIT THE SITE. VERIFY FIELD CONDITIONS AND CAREFULLY COMPARE SUCH FIELD CONDITIONS AND OTHER INFORMATION KNOWN TO THE CONTRACTOR WITH CONTRACT DOCUMENTS.
- THE GENERAL CONTRACTOR SHALL REPORT ANY UNFORESEEN FIELD CONDITIONS, ERRORS, INCONSISTENCIES, OR COMMISSIONS DISCOVERED AT ANY TIME DURING THE WORK, UPON SUCH DISCOVERY, THE CONTRACTOR SHALL IMMEDIATELY CONTRACT THE ARCHITECT AND COR FOR CLARIFICATION BEFORE PROCEEDING OR CONTINUING WITH THAT PORTION OF THE WORK OR ANY PORTION RELATED THERE TO.
- THE GENERAL CONTRACTOR SHALL NOTIFY THE COR AND THE ARCHITECT OF ANY DISCREPANCIES BETWEEN THE DRAWINGS, NOTES AND ACTUAL FIELD CONDITIONS BEFORE BIDDING AND COMMENCING ANY WORK, AND REQUEST CLARIFICATION IN WRITING.
- WORK SHALL BE PERFORMED DURING THE FOLLOWING HOURS:
MONDAY THROUGH THURSDAY - 1800 TO 0500 EACH DAY
WEEKENDS - FRIDAY 1800 TO MONDAY 0500
- FHCC ACCESS TO, AND USE OF, OPERATING ROOMS NOT UNDER CONSTRUCTION MUST BE MAINTAINED AT ALL TIMES. SEE DETAIL 6/AS-501 FOR TEMPORARY CONSTRUCTION WALL.

SHEET NOTES

A

CONTRACTOR SHALL REMOVE EXISTING FLOORING MATERIALS ENTIRELY AND PREPARE CONCRETE FLOORS FOR FLOORING MANUFACTURER'S ACCEPTANCE AND AS SPECIFIED FOR INSTALLATION OF NEW FLOORING MATERIALS AS SCHEDULED.

B

CONTRACTOR SHALL LEVEL THE EXISTING CONCRETE FLOOR SURFACE IN ACCORDANCE WITH FLOORING MANUFACTURER'S RECOMMENDATIONS.

C

CONTRACTOR SHALL INSTALL NEW FLOORING IN PATTERNS INDICATED TO THE GREATEST EXTENT POSSIBLE. PATTERN DEVIATIONS SHALL BE APPROVED BY THE C.O.R. PRIOR TO INSTALLATION.

D

TERMINATE OR TRANSITION DISSIMILAR FLOORING MATERIALS AT THE CENTERLINE OF DOORS.

E

PROVIDE A FLUSH TRANSITION BETWEEN FLOORING MATERIALS OF VARYING HEIGHTS. PROVIDE TRANSITION STRIPS AS INDICATED ON MATERIAL SCHEDULE.

F

DIFFERENT FLOOR MATERIALS ADJACENT TO EACH OTHER ARE TO BE FLUSH. FEATHER AND ALIGN AS REQUIRED.

G

TRANSITION STRIPS TO BE PROVIDED AT JOINT OF DIFFERING MATERIALS.

H

LOCATE ALL FLOORING TRANSITIONS UNDER DOORS.

KEY NOTES

1

EXPANSION JOINT. SEE DETAIL 3/AS-501

2

TRANSITION STRIP AT DOOR THRESHOLD. SEE DETAIL 2/AS-501

3

CONTRACTOR TO PROVIDE SHOP DRAWINGS OF FLOOR TILE LAYOUT, UNO, COORDINATE POSITION AND DIMENSIONS OF FLOOR TILE AREAS WITH C.O.R.

4

DEDUCTIVE ALTERNATE NO.2 - PROVIDE RESILIENT SHEET FLOORING AS SHOWN. INSTALL COVE BASE PER DETAIL 7/AS-501. SEE SHEET AS-102 FOR DEDUCTIVE ALTERNATE NO.1.

KEY PLAN

BUILDING IS FULLY SPRINKLERED

Project Name REPLACE SURGICAL FLOORING		Project Number 556-13-106	
Building Number 133-2C		Checked RHC	Drawn RAT
Location CAPTAIN JAMES A. LOVELL FHCC 3001 GREEN BAY ROAD NORTH CHICAGO, IL 60064		Drawing Number 133-AS-103	
		Dwg.	of

Office of Construction and Facilities Management

Department of Veterans Affairs

Revisions:		Date:	
CONSULTANTS:		ARCHITECT/ENGINEERS:	
ARCHITECTURE		PLANNING	
INTERIORS		CHICAGO	
5121 Bee Caves Road, Suite 203		345 N. Canal St. Suite 701	
Austin, Texas 78746		Chicago, IL 60605	
T:512 - 327 - 4149		T:312 - 698 - 3880	
F:512 - 327 - 7679		F:312 - 454 - 9439	
coxdesign@austin.rr.com		bcxo@coxtd.com	

Approved: Assistant Director	Approved: Chief of Staff	Approved: Chief, Engineering
Approved: Service Chief	Approved: Service Chief	Approved: Service Chief
Approved: Chief, Bio-Med	Approved: Chief, EMS	Approved: Chief, Infection Control
Approved: Chief, IT	Approved: Chief, M&O	Approved: Chief, Police
Approved: Chief, Safety	Approved: Chief	Approved: Chief

FLOOR FINISH PLAN - DEDUCTIVE ALTERNATE NO. 2

**CAPTAIN JAMES A. LOVELL FHCC
3001 GREEN BAY ROAD
NORTH CHICAGO, IL 60064**

1. VERIFY ALL DIMENSIONS AND CONDITIONS AY JOB SITE.
2. UNLESS NOTED TO BE REMOVED AND DISPOSED, ALL EXISTING ITEMS ARE TO REMAIN. THE SHALL BE PROTECTED FROM DAMAGE DUE TO CONSTRUCTION ACTIVITIES. ANY EXISTING ITEMS TO REMAIN THAT BECOME DAMAGED DUE TO CONSTRUCTION ACTIVITIES SHALL BE REPAIRED OR REPLACED TO MATCH EXISTING AT NO ADDITIONAL COST TO THE OWNER..
3. MAINTAIN CONTINUOUS UTILITY SERVICE TO ALL SPACES IN THE BUILDING NOT AFFECTED BY THIS WORK. COORDINATE WITH OWNER ANY DISRUPTION IN SERVICES REQUIRED TO PERFORM WORK OR TO MODIFY EXISTING PIPING, DUCTWORK, OR ANY ASSOCIATED EQUIPMENT.
4. THE GENERAL CONTRACTOR SHALL REPORT ANY UNFORESEEN FIELD CONDITIONS, ERRORS, INCONSISTENCIES, OR OMISSIONS DISCOVERED AT ANY TIME DURING THE WORK. UPON SUCH DISCOVERY, THE CONTRACTOR SHALL IMMEDIATELY CONTACT THE ARCHITECT AND COR FOR CLARIFICATION BEFORE PROCEEDING OR CONTINUING WITH THAT PORTION OF THE WORK OR ANY PORTION RELATED THERE TO.
5. ALL WORK SHALL CONFORM TO ALL APPLICABLE CODES AND STANDARDS INCLUDING THE INTERNATIONAL BUILDING CODE 2012 EDITION, VA MASTER SPECIFICATIONS, AND NFPA 101 2012 EDITION.
6. CONTRACTOR SHALL NOT BARRICADE / BARRIER EMERGENCY EGRESS TO OR FROM THIS AREA. CONTRACTOR SHALL MAINTAIN EXIT TO EXTERIOR DURING THE WORK PROCESS
7. PROVIDE ACCESS TO THE WORK AS DIRECTED BY THE C.O.R. SECURE ACCESS POINT AS SPECIFIED AND DIRECTED BY THE COR. PROVIDE WALK-OFF MATS TO MEET FACILITY INFECTION CONTROL GUIDELINES AT EACH ACCESS POINT.
8. SHADED AREAS ARE GENERALLY OUT OF SCOPE FOR THIS PROJECT.
9. NOTATIONS FOR ITEMS OF WORK APPLY TO EACH AND EVERY GRAPHICAL INDICATION SHOWN ON THE DRAWINGS, WETHER OR NOT NOTED.
10. THE GENERAL CONTRACTOR SHALL VISIT THE SITE, VERIFY FIELD CONDITIONS AND CAREFULLY COMPARE SUCH FIELD CONDITIONS AND OTHER INFORMATION KNOWN TO THE CONTRACTOR WITH CONTRACT DOCUMENTS.
11. THE GENERAL CONTRACTOR SHALL REPORT ANY UNFORESEEN FIELD CONDITIONS, ERRORS, INCONSISTENCIES, OR COMMISSIONS DISCOVERED AT ANY TIME DURING THE WORK. UPON SUCH DISCOVERY, THE CONTRACTOR SHALL IMMEDIATELY CONTRACT THE ARCHITECT AND COR FOR CLARIFICATION BEFORE PROCEEDING OR CONTINUING WITH THAT PORTION OF THE WORK OR ANY PORTION RELATED THERE TO.
12. THE GENERAL CONTRACTOR SHALL NOTIFY THE COR AND THE ARCHITECT OF ANY DISCREPANCIES BETWEEN THE DRAWINGS, NOTES AND ACTUAL FIELD CONDITIONS BEFORE BIDDING AND COMMENCING ANY WORK, AND REQUEST CLARIFICATION IN WRITING.
13. WORK SHALL BE PERFORMED DURING THE FOLLOWING HOURS:
MONDAY THROUGH THURSDAY - 1800 TO 0500 EACH DAY
WEEKENDS - FRIDAY 1800 TO MONDAY 0500
14. FHCC ACCESS TO, AND USE OF, OPERATING ROOMS NOT UNDER CONSTRUCTION MUST BE MAINTAINED AT ALL TIMES. SEE DETAIL 6/A5-501 FOR TEMPORARY CONSTRUCTION WALL.

INTERIOR ELEVATION NOTES:

- A SEE PROJECT FINISH REFERENCE, SHEET 1-AS601 FOR FINISHES, MATERIALS, AND COLORS FOR- WALLS, DOOR, WALL PROTECTION DEVICES, HANDRAILS, BASE, TILE, AND GROUT.
- B INTERIOR ELEVATIONS ARE FOR THE PURPOSE OF SHOWING TERRAZZO TILE WAINSCOT ONLY.

- ① ALL EXISTING WALL MOUNTED ITEMS AND DEVICES PENETRATING THE WALL OR MOUNTED ON THE WALL SURFACE ARE TO BE PROPERLY SECURED AND MOUNTED FOR THE INSTALLATION OF NEW TERRAZZO TILE WAINSCOT.
- ② VINYL WAINSCOT CAP
- ③ TERRAZZO TILE WAINSCOT.
- ④ TERRAZZO TILE COVE BASE
- ⑤ EXISTING CASEWORK. DO NOT INSTALL WAINSCOT AT THIS LOCATION.
- ⑥ REFER TO DETAIL 10/AS-501 FOR BASE COVE DETAIL AT CASEWORK.
- ⑦ EXISTING BUILT IN DESK. DO NOT INSTALL WAINSCOT AT THIS LOCATION.
- ⑧ REFER TO DETAIL 9/AS-501 FOR COVE BASE DETAIL AT BUILT IN DESK.

**BUILDING IS
FULLY
SPRINKLERED**

[illegible]

CONSULTANTS:

ARCHITECT/ENGINEERS:
COX DESIGN ASSOCIATES

ARCHITECTURE	PLANNING	INTERIORS
Austin 5121 Bee Caves Road, Suite 203 Austin, Texas 78746 T:512 - 327 - 4149 F:512 - 327 - 7679 coxdesign@austin.rr.com	Chicago 345 N. Canal St. Suite 701 Chicago, IL 60605 T:312 - 698 - 3880 F:312 - 454 - 9439 bcx@coxld.com	

Approved: Assistant Director	Approved: Chief of Staff	Approved: Chief, Engineering
Approved: Service Chief	Approved: Service Chief	Approved: Service Chief
Approved: Chief, Bio-Med	Approved: Chief, EMS	Approved: Chief, Infection Control
Approved: Chief, IT	Approved: Chief, M&O	Approved: Chief, Police
Approved: Chief, Safety	Approved: Chief	Approved: Chief

Drawing Title
INTERIOR ELEVATIONS

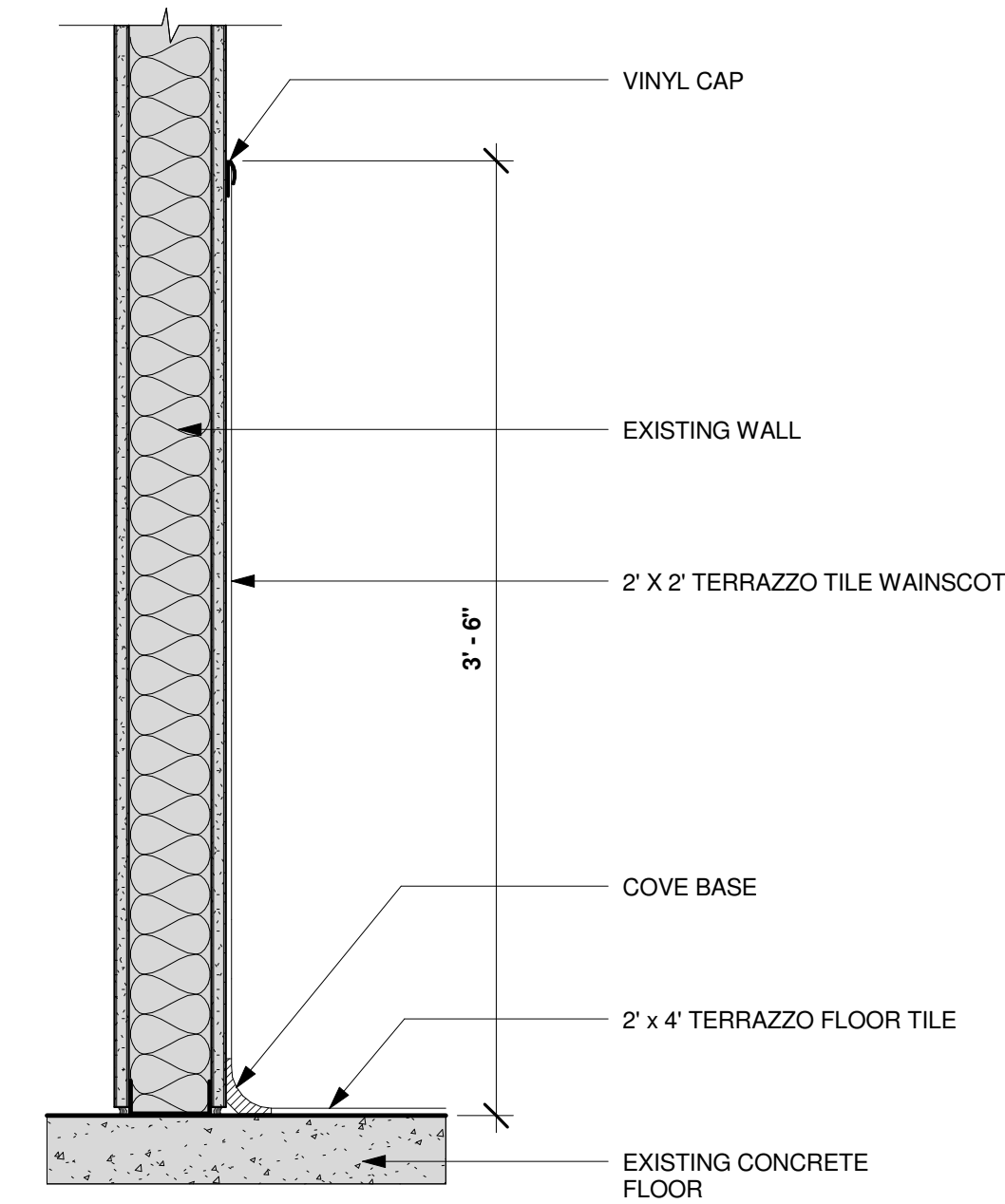
Location
**CAPTAIN JAMES A. LOVELL FHCC
3001 GREEN BAY ROAD
NORTH CHICAGO, IL 60064**

Project Name			Project Number	
REPLACE SURGICAL FLOORING			556-13-106	
			Date	
			AUGUST 7, 2013	
			Drawing Number	
			133-AS-201	
Building Number	Checked	Drawn		
133-2C	RHC	RAT	Dwg. of	

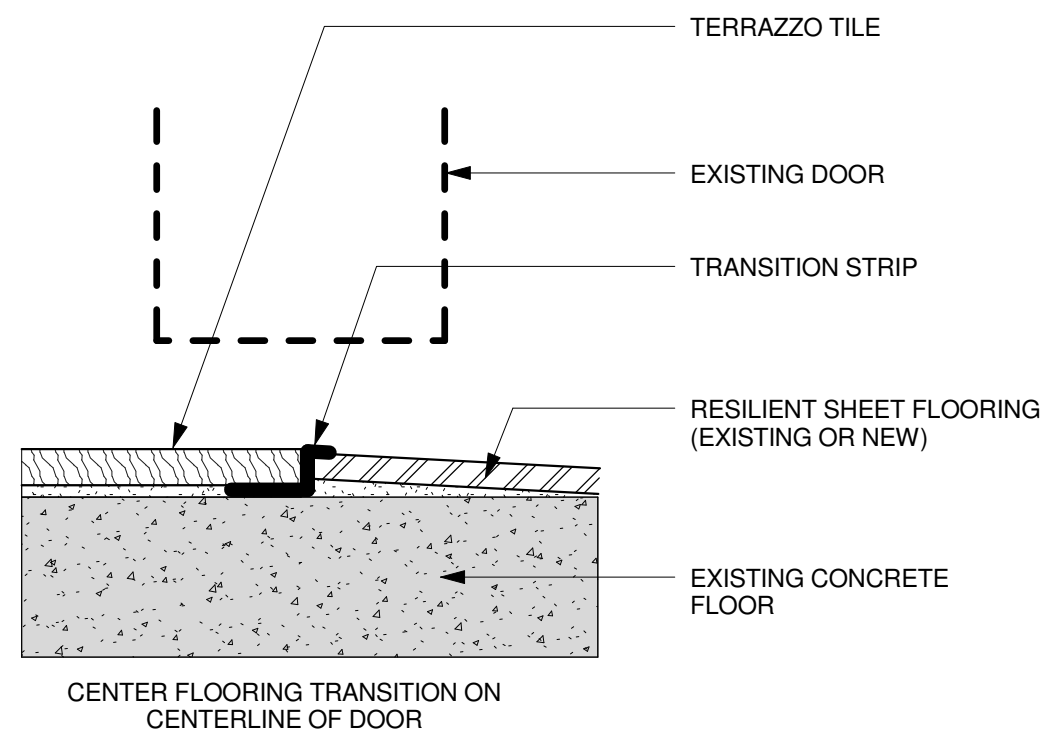
Office of
Construction
and Facilities
Management



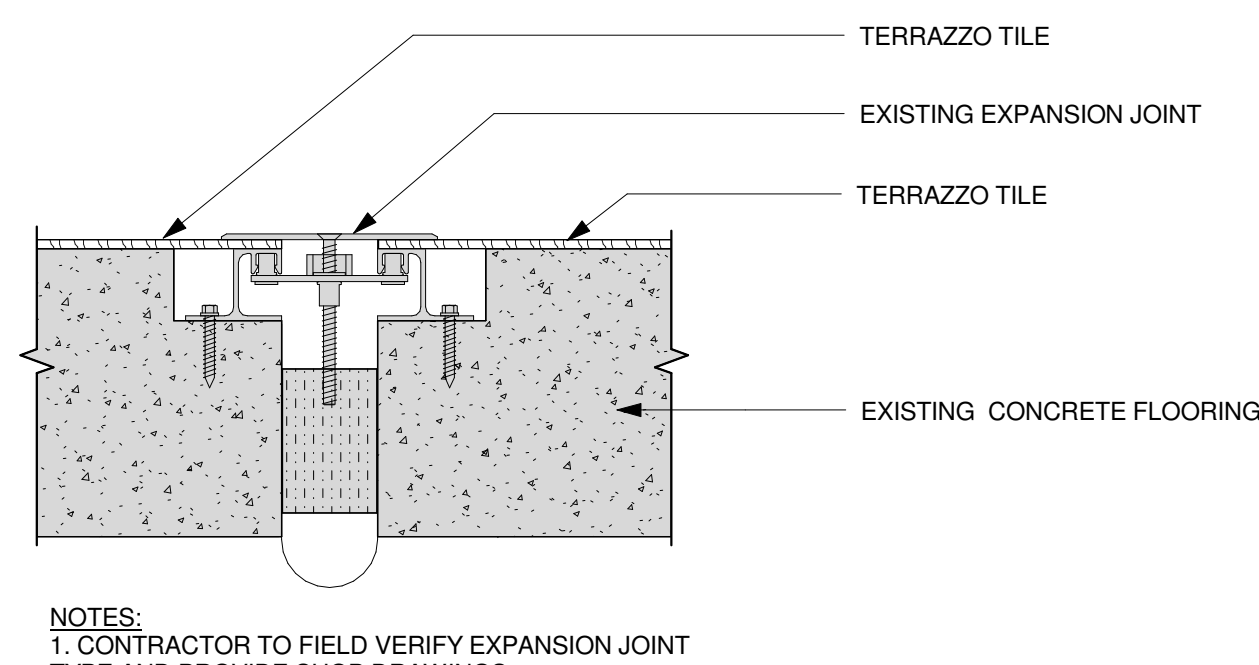
A
three inches = one foot
one and one half inches = one foot
B
one inch = one foot
C
three quarters inch = one foot
D
one half inch = one foot
E
three eighths inch = one foot
F
one quarter inch = one foot
one eighth inch = one foot



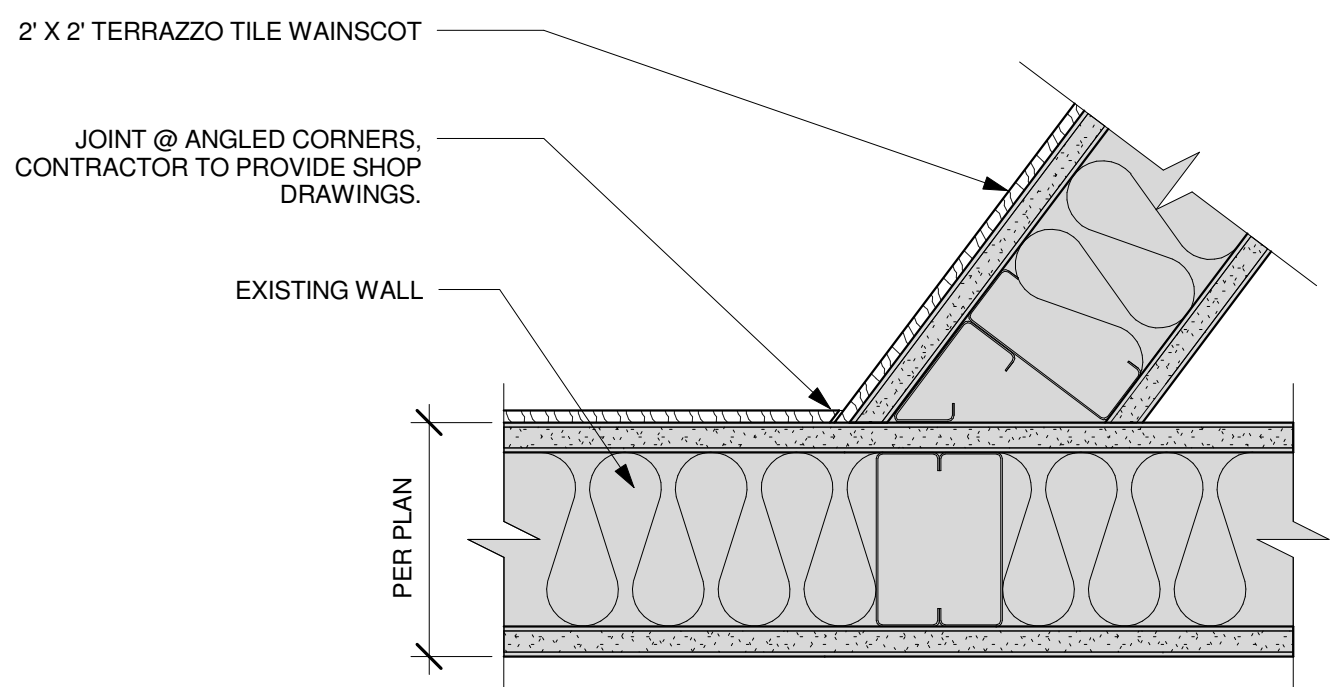
1 TERRAZZO TILE COVE BASE & CAP DETAIL
SCALE: 1 1/2" = 1'-0"
RE:2 /133-AS-201



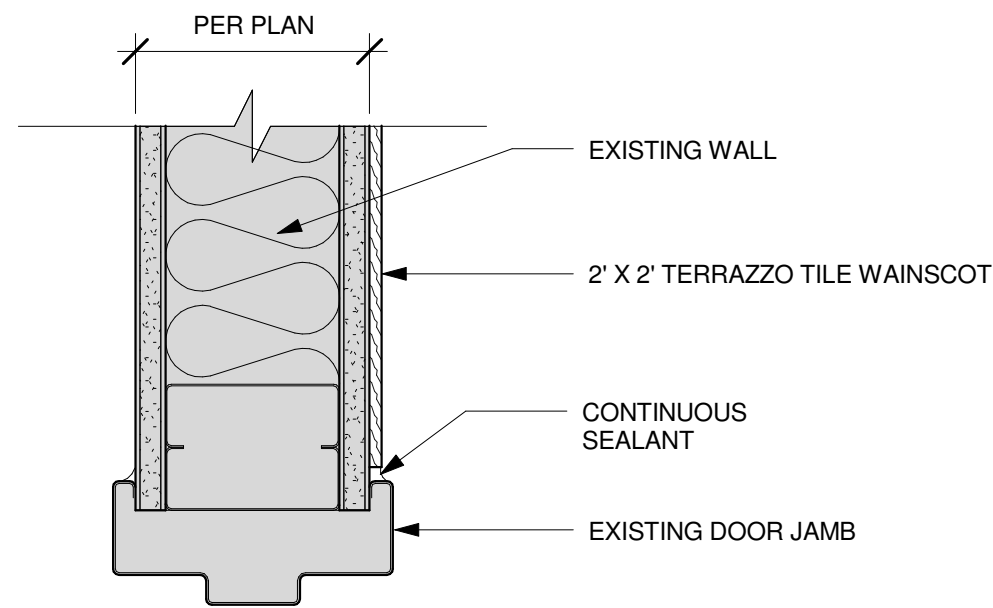
2 FLOORING TRANSITION - TERRAZZO TILE TO RESILIENT SHEET FLOORING
SCALE: 12" = 1'-0"



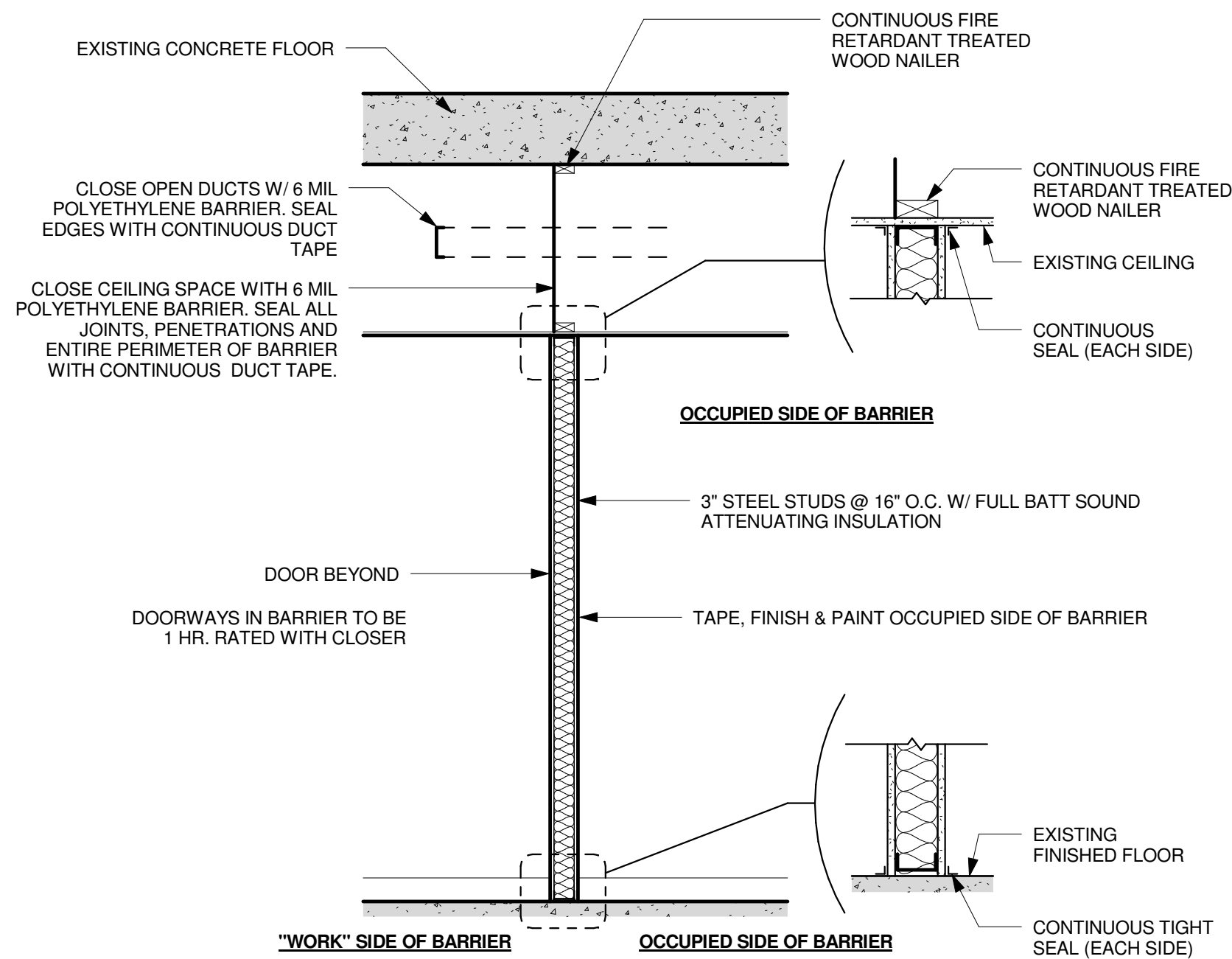
3 FINISH FLOORING @ EXPANSION JOINT
SCALE: 3" = 1'-0"



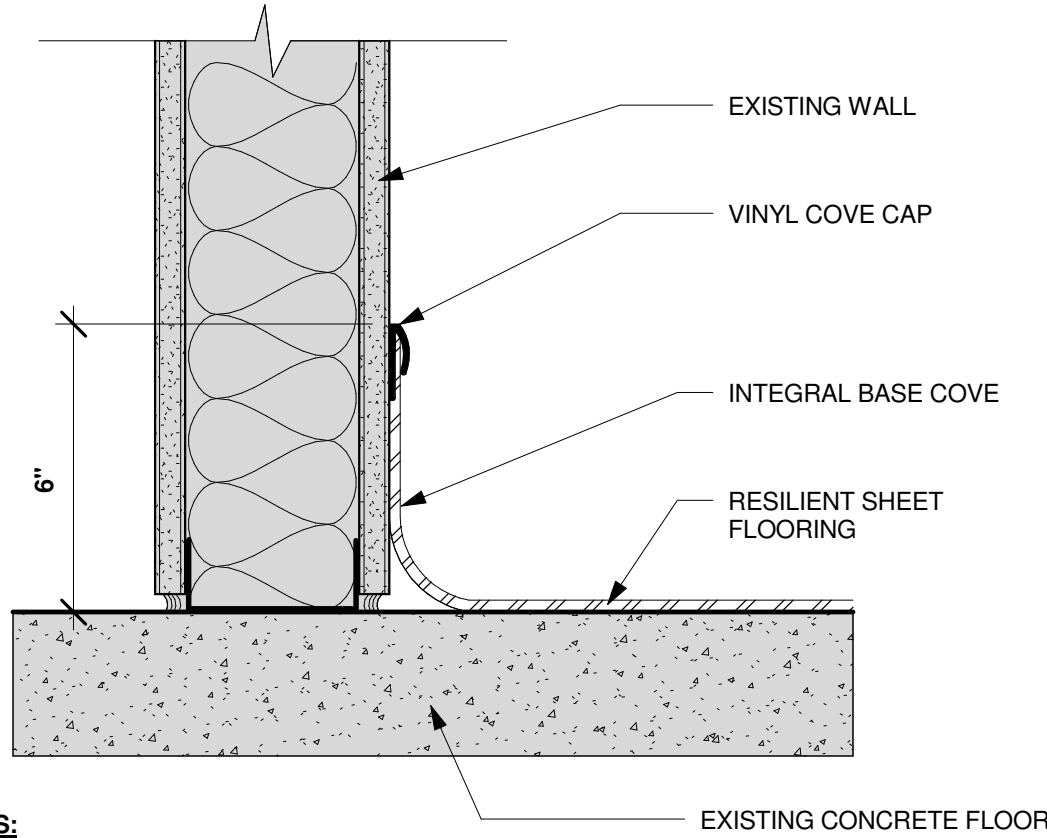
4 TYPICAL JOINT DETAIL @ ANGLED CORNERS
SCALE: 3" = 1'-0"



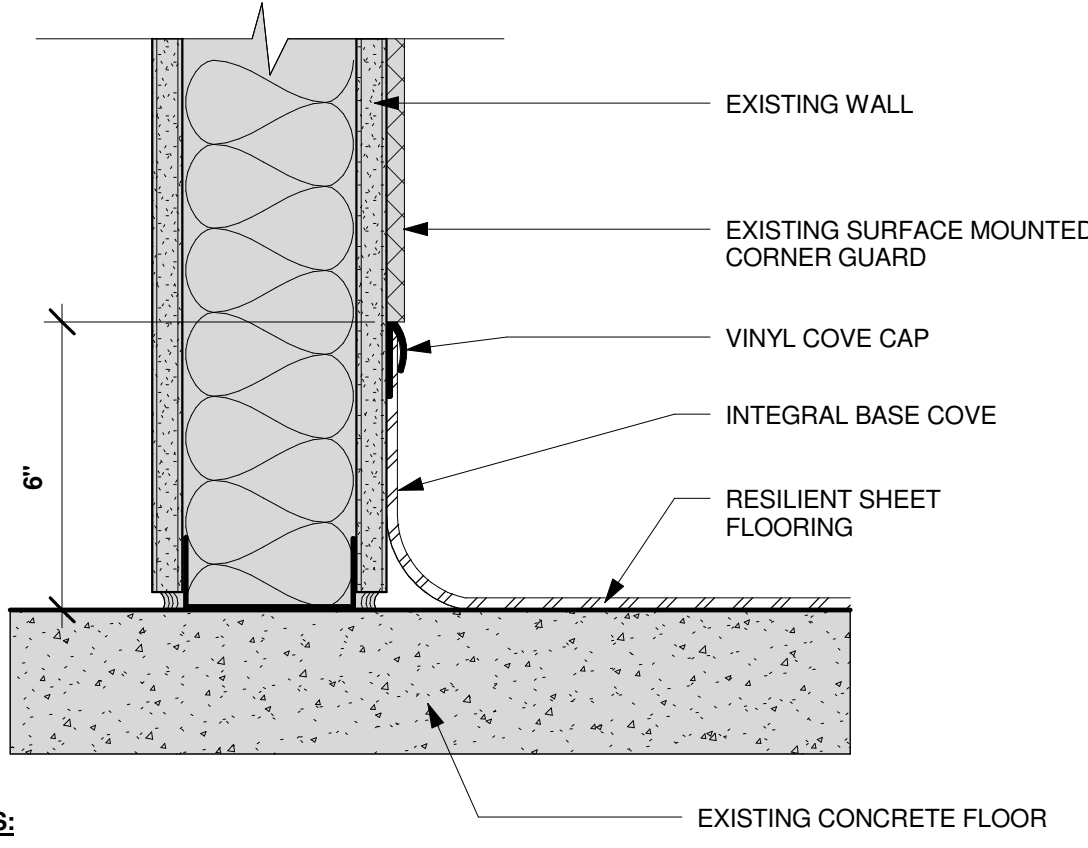
5 TERRAZZO TILE WAJNSCOT @ DOOR JAMB DETAIL
SCALE: 3" = 1'-0"



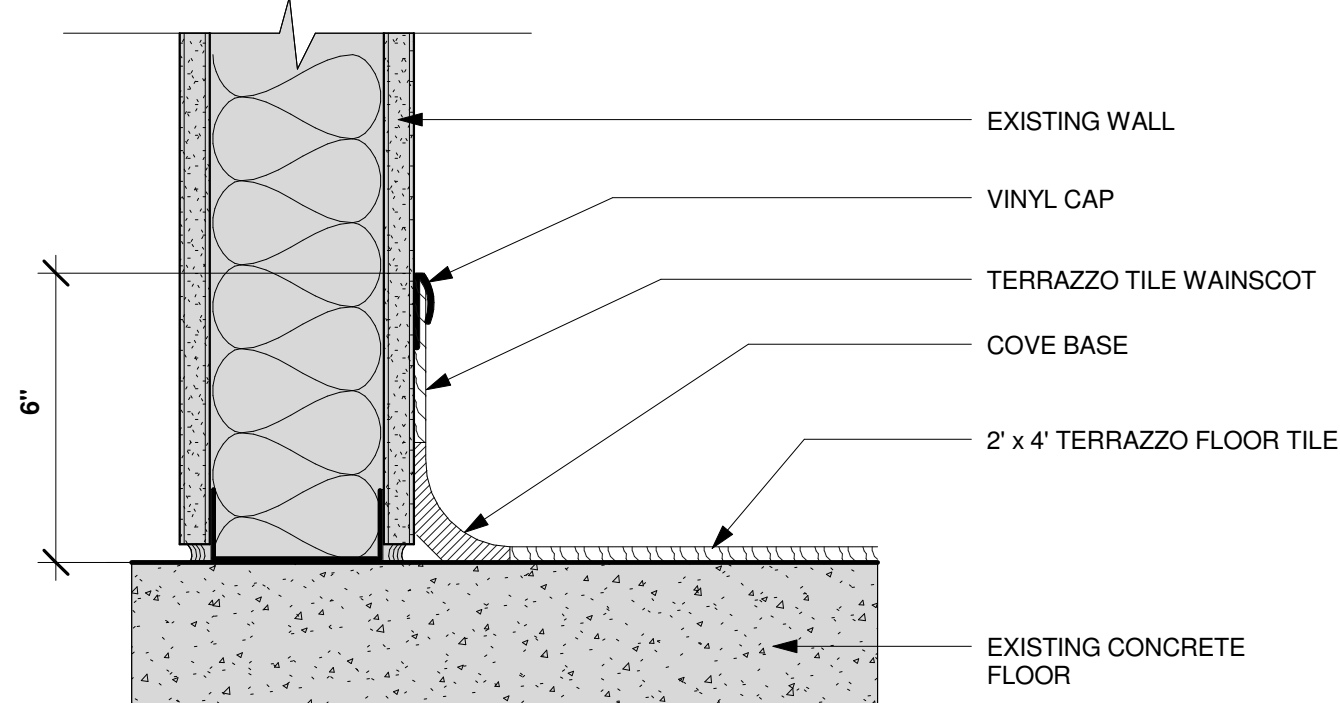
6 TEMPORARY CONSTRUCTION PHASING SEPARATION
SCALE: 1/2" = 1'-0"



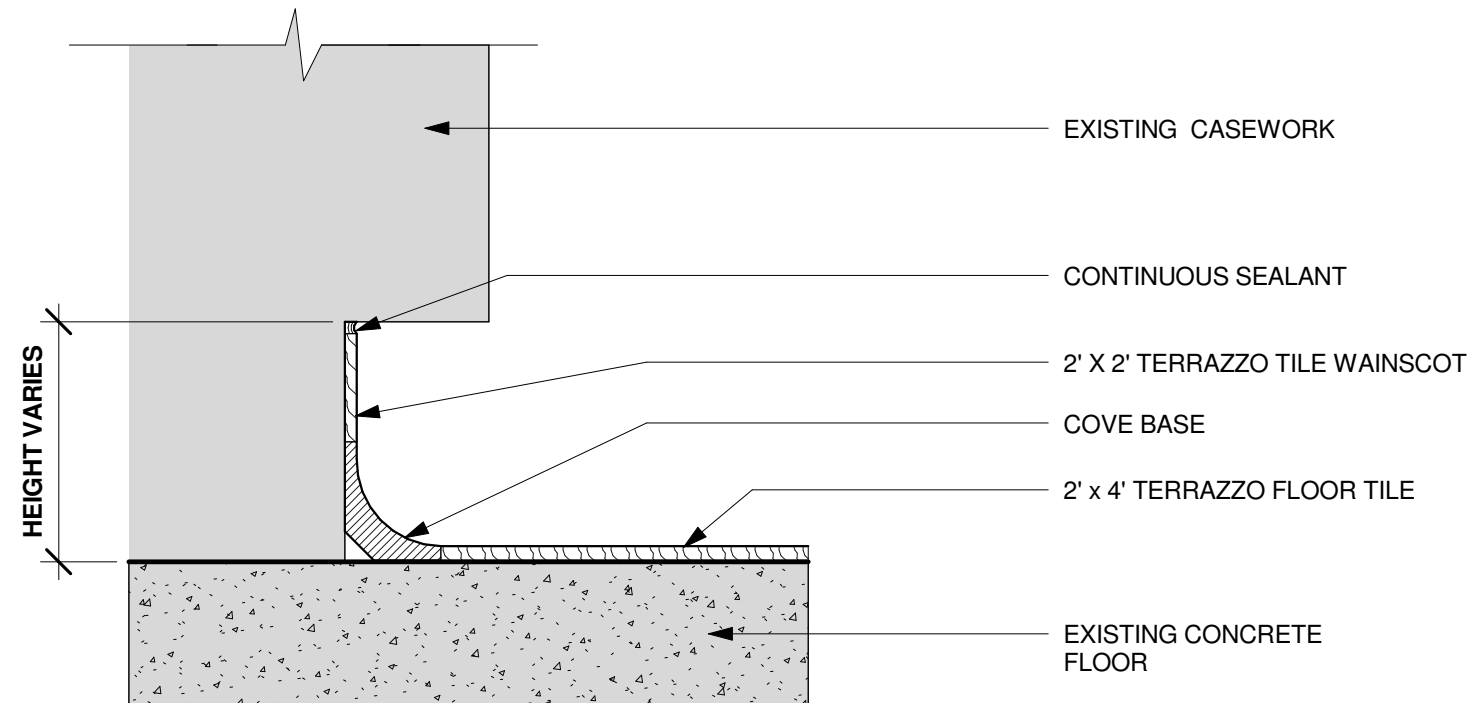
7 TYPICAL RESILIENT SHEET FLOORING COVE BASE DETAIL
SCALE: 3" = 1'-0"



8 RESILIENT SHEET FLOORING COVE BASE DETAIL @ EXISTING CORNER GUARD
SCALE: 3" = 1'-0"



9 TERRAZZO TILE COVE BASE DETAIL @ EXISTING BUILT IN DESK
SCALE: 3" = 1'-0"



10 TERRAZZO TILE COVE BASE @ EXISTING CASEWORK
SCALE: 3" = 1'-0"

BUILDING IS
FULLY
SPRINKLERED

																																																																																																																																																																																																																																																																																																																																																																																																																																																																																																																																																																																																																																																																																																																																																																																																																																																																																																																																																																																																																																																																																																																																																																																																																																																																																																																																																																																																																																																																																																																																																																											</
--	--	--	--	--	--	--	--	--	--	--	--	--	--	--	--	--	--	--	--	--	--	--	--	--	--	--	--	--	--	--	--	--	--	--	--	--	--	--	--	--	--	--	--	--	--	--	--	--	--	--	--	--	--	--	--	--	--	--	--	--	--	--	--	--	--	--	--	--	--	--	--	--	--	--	--	--	--	--	--	--	--	--	--	--	--	--	--	--	--	--	--	--	--	--	--	--	--	--	--	--	--	--	--	--	--	--	--	--	--	--	--	--	--	--	--	--	--	--	--	--	--	--	--	--	--	--	--	--	--	--	--	--	--	--	--	--	--	--	--	--	--	--	--	--	--	--	--	--	--	--	--	--	--	--	--	--	--	--	--	--	--	--	--	--	--	--	--	--	--	--	--	--	--	--	--	--	--	--	--	--	--	--	--	--	--	--	--	--	--	--	--	--	--	--	--	--	--	--	--	--	--	--	--	--	--	--	--	--	--	--	--	--	--	--	--	--	--	--	--	--	--	--	--	--	--	--	--	--	--	--	--	--	--	--	--	--	--	--	--	--	--	--	--	--	--	--	--	--	--	--	--	--	--	--	--	--	--	--	--	--	--	--	--	--	--	--	--	--	--	--	--	--	--	--	--	--	--	--	--	--	--	--	--	--	--	--	--	--	--	--	--	--	--	--	--	--	--	--	--	--	--	--	--	--	--	--	--	--	--	--	--	--	--	--	--	--	--	--	--	--	--	--	--	--	--	--	--	--	--	--	--	--	--	--	--	--	--	--	--	--	--	--	--	--	--	--	--	--	--	--	--	--	--	--	--	--	--	--	--	--	--	--	--	--	--	--	--	--	--	--	--	--	--	--	--	--	--	--	--	--	--	--	--	--	--	--	--	--	--	--	--	--	--	--	--	--	--	--	--	--	--	--	--	--	--	--	--	--	--	--	--	--	--	--	--	--	--	--	--	--	--	--	--	--	--	--	--	--	--	--	--	--	--	--	--	--	--	--	--	--	--	--	--	--	--	--	--	--	--	--	--	--	--	--	--	--	--	--	--	--	--	--	--	--	--	--	--	--	--	--	--	--	--	--	--	--	--	--	--	--	--	--	--	--	--	--	--	--	--	--	--	--	--	--	--	--	--	--	--	--	--	--	--	--	--	--	--	--	--	--	--	--	--	--	--	--	--	--	--	--	--	--	--	--	--	--	--	--	--	--	--	--	--	--	--	--	--	--	--	--	--	--	--	--	--	--	--	--	--	--	--	--	--	--	--	--	--	--	--	--	--	--	--	--	--	--	--	--	--	--	--	--	--	--	--	--	--	--	--	--	--	--	--	--	--	--	--	--	--	--	--	--	--	--	--	--	--	--	--	--	--	--	--	--	--	--	--	--	--	--	--	--	--	--	--	--	--	--	--	--	--	--	--	--	--	--	--	--	--	--	--	--	--	--	--	--	--	--	--	--	--	--	--	--	--	--	--	--	--	--	--	--	--	--	--	--	--	--	--	--	--	--	--	--	--	--	--	--	--	--	--	--	--	--	--	--	--	--	--	--	--	--	--	--	--	--	--	--	--	--	--	--	--	--	--	--	--	--	--	--	--	--	--	--	--	--	--	--	--	--	--	--	--	--	--	--	--	--	--	--	--	--	--	--	--	--	--	--	--	--	--	--	--	--	--	--	--	--	--	--	--	--	--	--	--	--	--	--	--	--	--	--	--	--	--	--	--	--	--	--	--	--	--	--	--	--	--	--	--	--	--	--	--	--	--	--	--	--	--	--	--	--	--	--	--	--	--	--	--	--	--	--	--	--	--	--	--	--	--	--	--	--	--	--	--	--	--	--	--	--	--	--	--	--	--	--	--	--	--	--	--	--	--	--	--	--	--	--	--	--	--	--	--	--	--	--	--	--	--	--	--	--	--	--	--	--	--	--	--	--	--	--	--	--	--	--	--	--	--	--	--	--	--	--	--	--	--	--	--	--	--	--	--	--	--	--	--	--	--	--	--	--	--	--	--	--	--	--	--	--	--	--	--	--	--	--	--	--	--	--	--	--	--	--	--	--	--	--	--	--	--	--	--	--	--	--	--	--	--	--	--	--	--	--	--	--	--	--	--	--	--	--	--	--	--	--	--	--	--	--	--	--	--	--	--	--	--	--	--	--	--	--	--	--	--	--	--	--	--	--	--	--	--	--	--	--	--	--	--	--	--	--	--	--	--	--	--	--	--	--	--	--	--	--	--	--	--	--	--	--	--	--	--	--	--	--	--	--	--	--	--	--	--	--	--	--	--	--	--	--	--	--	--	--	--	--	--	--	--	--	--	--	--	--	--	--	--	--	--	--	--	--	--	--	--	--	--	--	--	--	--	--	--	--	--	--	--	--	--	--	--	--	--	--	--	--	--	--	--	--	--	--	--	--	--	--	--	--	--	--	--	--	--	--	--	--	--	--	--	--	--	--	--	--	--	--	--	--	--	--	--	--	--	--	--	--	--	--	--	--	--	--	--	--	--	--	--	--	--	--	--	--	--	--	--	--	--	--	--	--	--	--	--	--	--	--	--	--	--	--	--	--	--	--	--	--	--	--	--	--	--	--	--	--	--	--	--	--	--	--	--	--	--	--	--	--	--	--	--	--	--	--	--	--	--	--	--	--	--	--	--	--	--	--	--	--	--	--	--	--	--	--	--	--	--	--	--	--	--	--	--	--	--	--	--	--	--	--	--	--	--	--	--	--	--	--	--	--	--	--	--	--	--	--	--	--	--	--	--	--	--	--	--	--	--	--	--	--	--	--	--	--	--	--	--	--	--	--	--	--	--	--	--	--	--	--	--	--	--	--	--	--	--	--	--	--	--	--	--	--	--	--	--	--	--	--	--	--	--	--	--	--	--	--	--	--	--	--	--	--	--	--	--	--	--	--	--	--	--	--	--	--	--	--	--	--	--	--	--	--	--	--	--	--	--	--	--	--	--	--	--	--	--	--	--	--	--	--	--	--	--	--	--	--	--	--	--	--	--	--	--	--	--	--	--	--	--	--	--	--	--	--	--	--	--	--	--	--	--	--	--	--	--	--	--	--	--	--	--	--	--	--	--	--	--	--	--	--	--	--	--	--	--	--	--	--	--	--	--	--	--	--	--	--	--	--	--	--	--	--	--	--	--	--	--	--	--	--	--	--	--	--	--	--	--	--	--	--	--	--	--	--	--	--	--	--	--	--	--	--	--	--	--	--	--	--	--	--	--	--	--	--	--	--	--	--	--	--	--	--	--	--	--	--	--	--	--	--	--	--	--	--	--	--	--	--	--	--	--	--	--	--	--	--	--	--	--	--	--	--	--	--	--	--	--	--	--	--	--	--	--	--	--	--	--	--	--	--	--	--	--	--	--	--	--	--	--	--	--	--	--	--	--	--	--	--	--	--	--	--	--	--	--	--	----

ROOM FINISH SCHEDULE

ROOM NUMBER	ROOM NAME	FLOOR	BASE	ROOM FINISH SCHEDULE							CEILING	WINDOW TREATMENTS	ID FINISH REMARK
				WALLS									
				NORTH	EAST	SOUTH	WEST						
2C102		SV-1	SV-1/TS-2							N/A	N/A	BASE 6" HIGH	
2C102A		SV-1	SV-1/TS-2							N/A	N/A	BASE 6" HIGH	
2C102B		SV-1	SV-1/TS-2							N/A	N/A	BASE 6" HIGH	
2C105	OPERATING ROOM 1	FT-1/FT-2/FT-3	FB-1	FT-4/TS-3	FT-4/TS-3	FT-4/TS-3	FT-4/TS-3	N/A	N/A	N/A	N/A	WAINSCOT 42" HIGH	
2C105B		FT-1	FB-1	FT-4/TS-3	FT-4/TS-3	FT-4/TS-3	FT-4/TS-3	N/A	N/A	N/A	N/A	WAINSCOT 42" HIGH	
2C106	OPERATING ROOM 2	FT-1/FT-2/FT-3	FB-1	FT-4/TS-3	FT-4/TS-3	FT-4/TS-3	FT-4/TS-3	N/A	N/A	N/A	N/A	WAINSCOT 42" HIGH	
2C107		SV-1	SV-1/TS-2							N/A	N/A	WAINSCOT 42" HIGH	
2C108	OPERATING ROOM 4	FT-1/FT-2/FT-3	FB-1	FT-4/TS-3	FT-4/TS-3	FT-4/TS-3	FT-4/TS-3	N/A	N/A	N/A	N/A	WAINSCOT 42" HIGH	
2C108A		FT-1	FB-1	FT-4/TS-3	FT-4/TS-3	FT-4/TS-3	FT-4/TS-3	N/A	N/A	N/A	N/A	WAINSCOT 42" HIGH	
2C109	OPERATING ROOM 3	FT-1/FT-2/FT-3	FB-1	FT-4/TS-3	FT-4/TS-3	FT-4/TS-3	FT-4/TS-3	N/A	N/A	N/A	N/A	WAINSCOT 42" HIGH	
2C109A		FT-1	FB-1	FT-4/TS-3	FT-4/TS-3	FT-4/TS-3	FT-4/TS-3	N/A	N/A	N/A	N/A	WAINSCOT 42" HIGH	
2C110		SV-1	SV-1/TS-2							N/A	N/A	BASE 6" HIGH	
2C110A		SV-1	SV-1/TS-2							N/A	N/A	BASE 6" HIGH	
2C111		SV-1	SV-1/TS-2							N/A	N/A	BASE 6" HIGH	
C2220	CORR	FT-1/FT-2	FB-1	FT-4/TS-3	FT-4/TS-3	FT-4/TS-3	FT-4/TS-3	N/A	N/A	N/A	N/A	WAINSCOT 42" HIGH	
C2221	CORR	FT-1/FT-2	FB-1	FT-4/TS-3	FT-4/TS-3	FT-4/TS-3	FT-4/TS-3	N/A	N/A	N/A	N/A	WAINSCOT 42" HIGH	
C2222	CORR	FT-1/FT-2	FB-1	FT-4/TS-3	FT-4/TS-3	FT-4/TS-3	FT-4/TS-3	N/A	N/A	N/A	N/A	WAINSCOT 42" HIGH	
C2223	CORR	FT-1/FT-2	FB-1	FT-4/TS-3	FT-4/TS-3	FT-4/TS-3	FT-4/TS-3	N/A	N/A	N/A	N/A	WAINSCOT 42" HIGH	
C2224	CORR	FT-1/FT-2	FB-1	FT-4/TS-3	FT-4/TS-3	FT-4/TS-3	FT-4/TS-3	N/A	N/A	N/A	N/A	WAINSCOT 42" HIGH	
C2225	CORR	FT-1/FT-2	FB-1	FT-4/TS-3	FT-4/TS-3	FT-4/TS-3	FT-4/TS-3	N/A	N/A	N/A	N/A	WAINSCOT 42" HIGH	
C2226	CORR	FT-1/FT-2	FB-1	FT-4/TS-3	FT-4/TS-3	FT-4/TS-3	FT-4/TS-3	N/A	N/A	N/A	N/A	WAINSCOT 42" HIGH	
C2227	CORR	FT-1/FT-2	FB-1	FT-4/TS-3	FT-4/TS-3	FT-4/TS-3	FT-4/TS-3	N/A	N/A	N/A	N/A	WAINSCOT 42" HIGH	
C2228	CORR	FT-1/FT-2	FB-1	FT-4/TS-3	FT-4/TS-3	FT-4/TS-3	FT-4/TS-3	N/A	N/A	N/A	N/A	WAINSCOT 42" HIGH	
C2229	CORR	FT-1/FT-2	FB-1	FT-4/TS-3	FT-4/TS-3	FT-4/TS-3	FT-4/TS-3	N/A	N/A	N/A	N/A	WAINSCOT 42" HIGH	

MATERIAL FINISH LEGEND

[illegible]

BASE FINISH LEGEND								
FINISH CODE	MATERIAL	MANUFACTURER	MANUFACTURER NO.	PATTERN	COLOR	SIZE	BASE GROUT KEY	ID FINISH REMARKS
FB-1	TERRAZZO TILE COVE BASE	MATS, INC.		FLOORAZZO	---			
SV-1	RESILIENT SHEET FLOORING	ARMSTRONG OR EQUAL		MEDITONE	MATCH FT-1	N/A		
TS-2	COVE BASE CAP	JOHNSONITE OR EQUAL		N/A	MATCH SV-1			

WALL FINISH LEGEND								
FINISH CODE	MATERIAL	MANUFACTURER	MANUFACTURER NO.	FINISH	COLOR	SIZE	GROUT	ID FINISH REMARKS
FT-4	TERRAZZO TILE	MATS, INC.		FLOORAZZO MARBLE	WHITE CAPS	24" X 24"	---	
TS-3	VINYL WAINSCOT CAP	JOHNSONITE OR EQUAL		N/A	MATCH FT-4	---	---	---

GENERAL FINISH NOTES

1. WHERE TERRAZZO TILE MEETS RESILIENT SHEET FLOORING, PROVIDE TRANSITIONAL EDGE STRIP. ALIGN STRIP UNDER CENTER OF DOOR.
2. MANUFACTURER'S TRADE NAMES AND NUMBERS USED HEREIN FOR SOME PRODUCTS ARE ONLY TO IDENTIFY COLORS, FINISHES, TEXTURES AND PATTERNS. PRODUCTS OF OTHER MANUFACTURERS EQUIVALENT TO COLORS, FINISHES, TEXTURES AND PATTERNS OF MANUFACTURERS LISTED THAT MEET REQUIREMENTS OF TECHNICAL SPECIFICATIONS WILL BE ACCEPTABLE, UPON APPROVAL, IN WRITING, BY THE COR FOR FINISH REQUIREMENTS. OTHER PROPRIETARY PRODUCTS ARE SPECIFIED BY MANUFACTURER'S TRADE NAME.
3. FOR THE FINISH LOCATION INFORMATION REFER TO THE FINISH SCHEDULE DRAWINGS.
4. WORK SHALL BE PERFORMED DURING THE FOLLOWING HOURS:
MONDAY THROUGH THURSDAY - 1800 TO 0500 EACH DAY
WEEKENDS - FRIDAY 1800 TO MONDAY 0500.

OWNER PROVIDED ITEMS

[illegible]

**BUILDING IS
FULLY
SPRINKLERED**

[illegible]