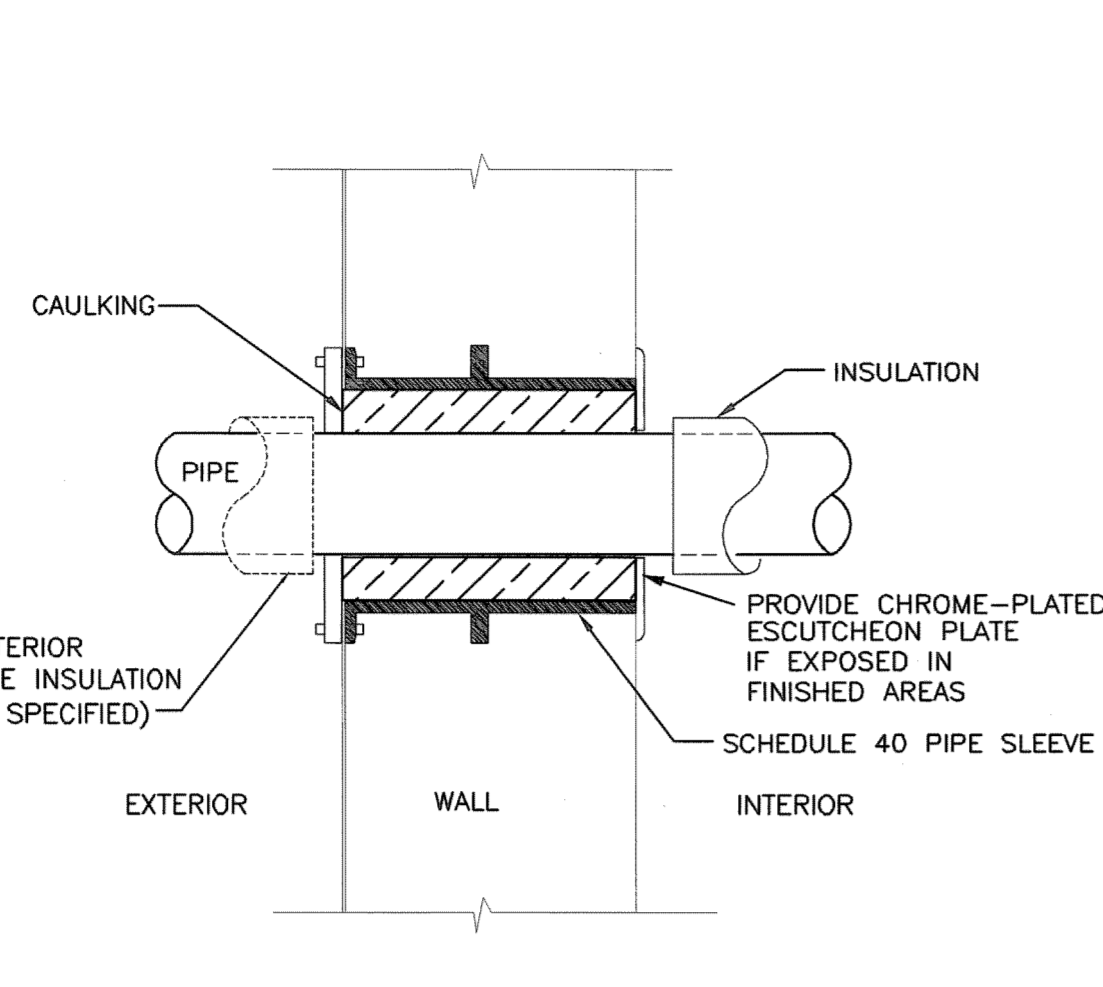
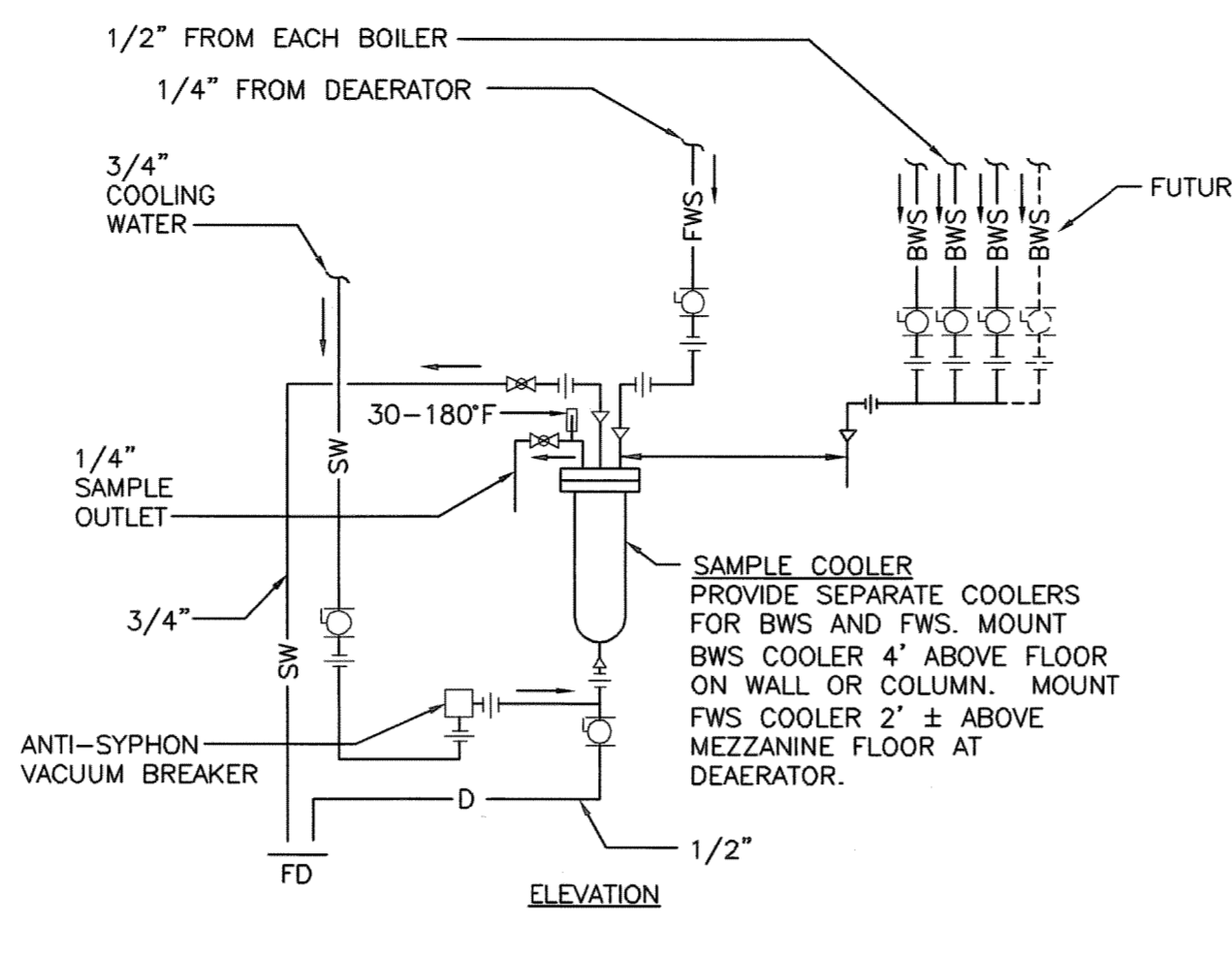


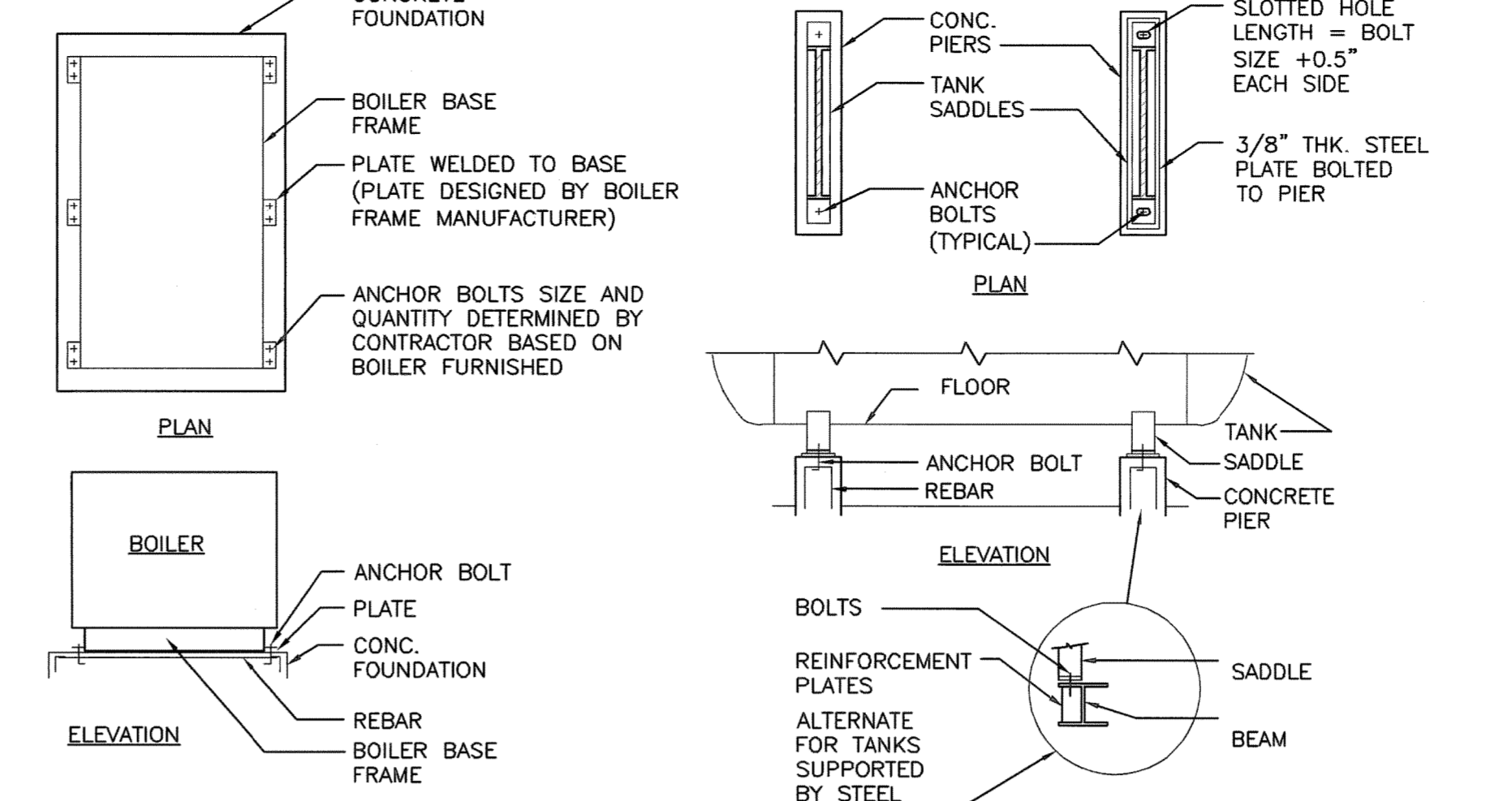
B1 PIPING THRU ROOF
SCALE: NONE



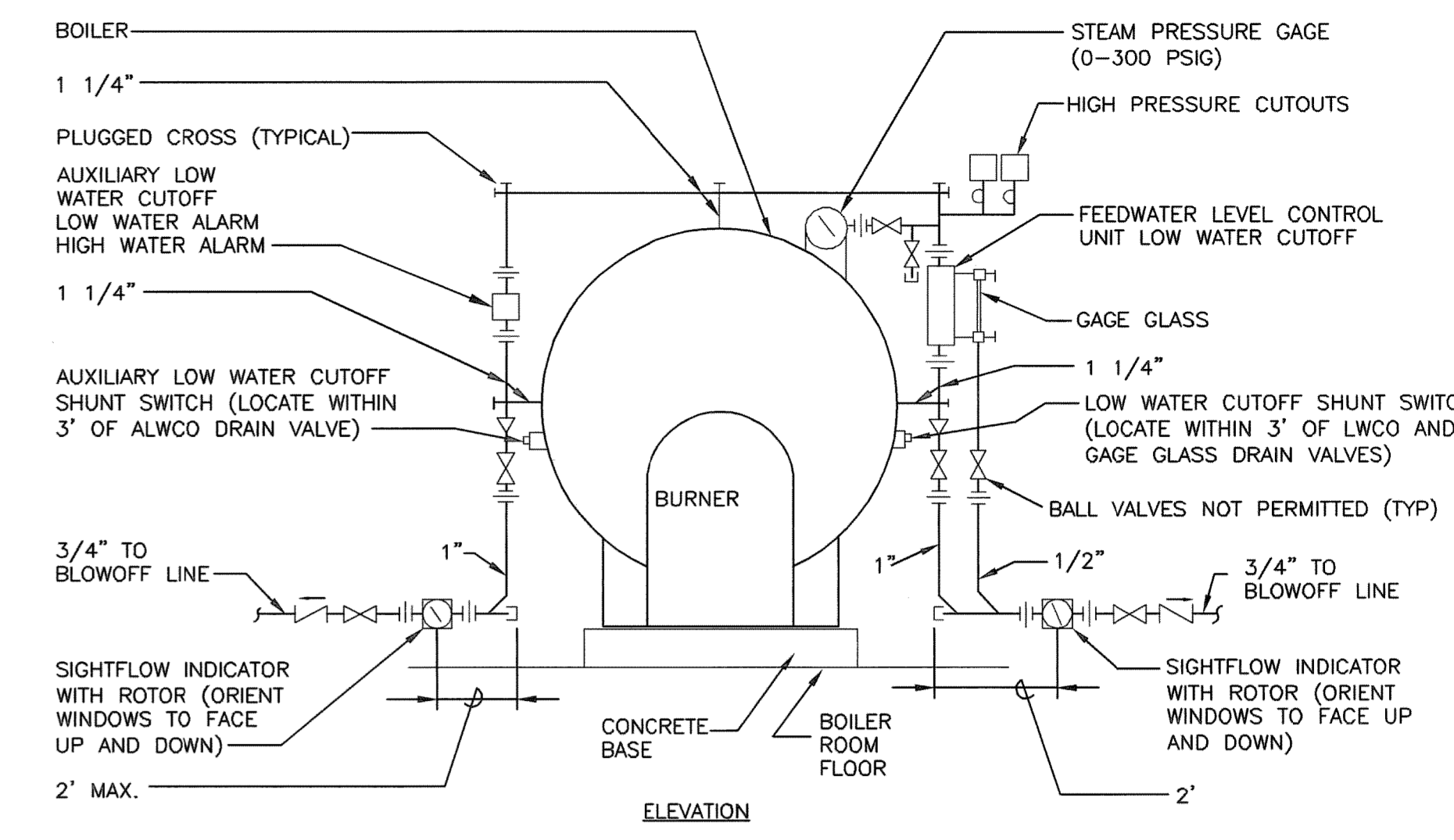
B2 PIPE PENETRATION OF EXTERIOR WALLS
SCALE: NONE



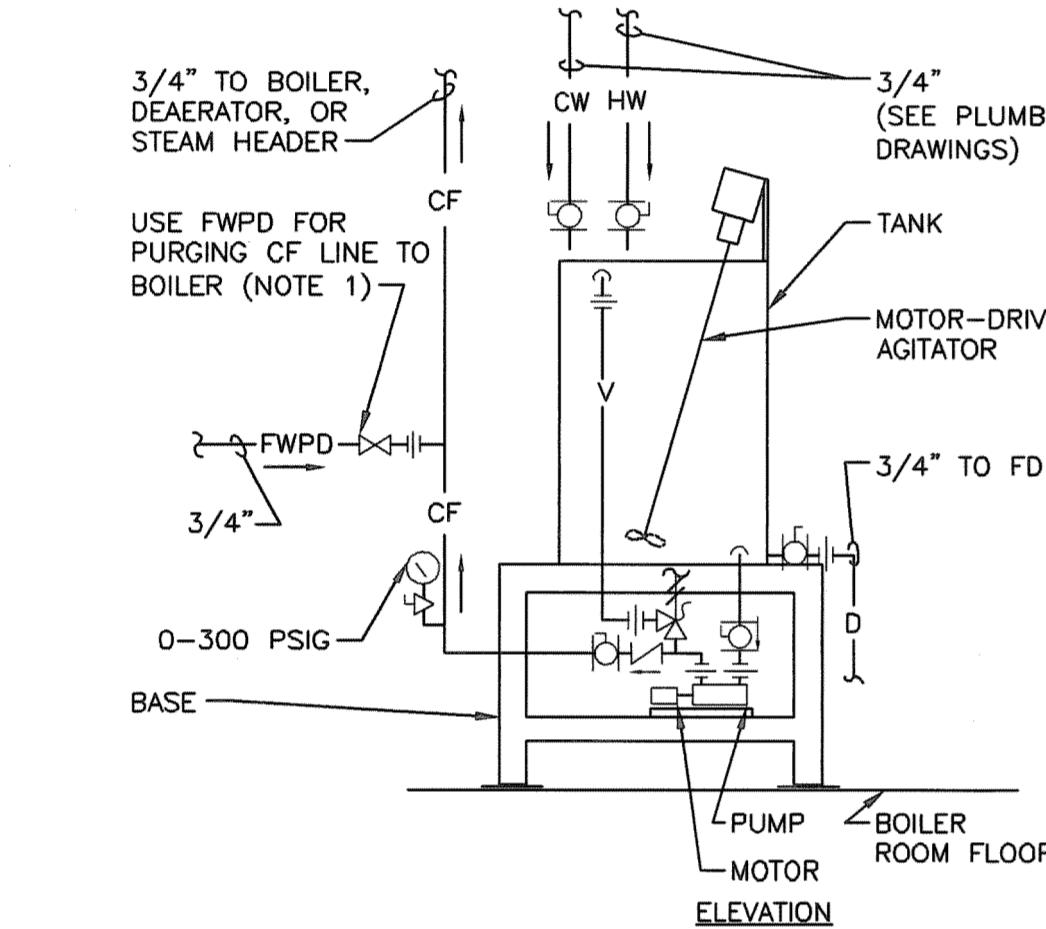
B4 WATER SAMPLE COOLERS BOILER WATER AND FEEDWATER
SCALE: NONE



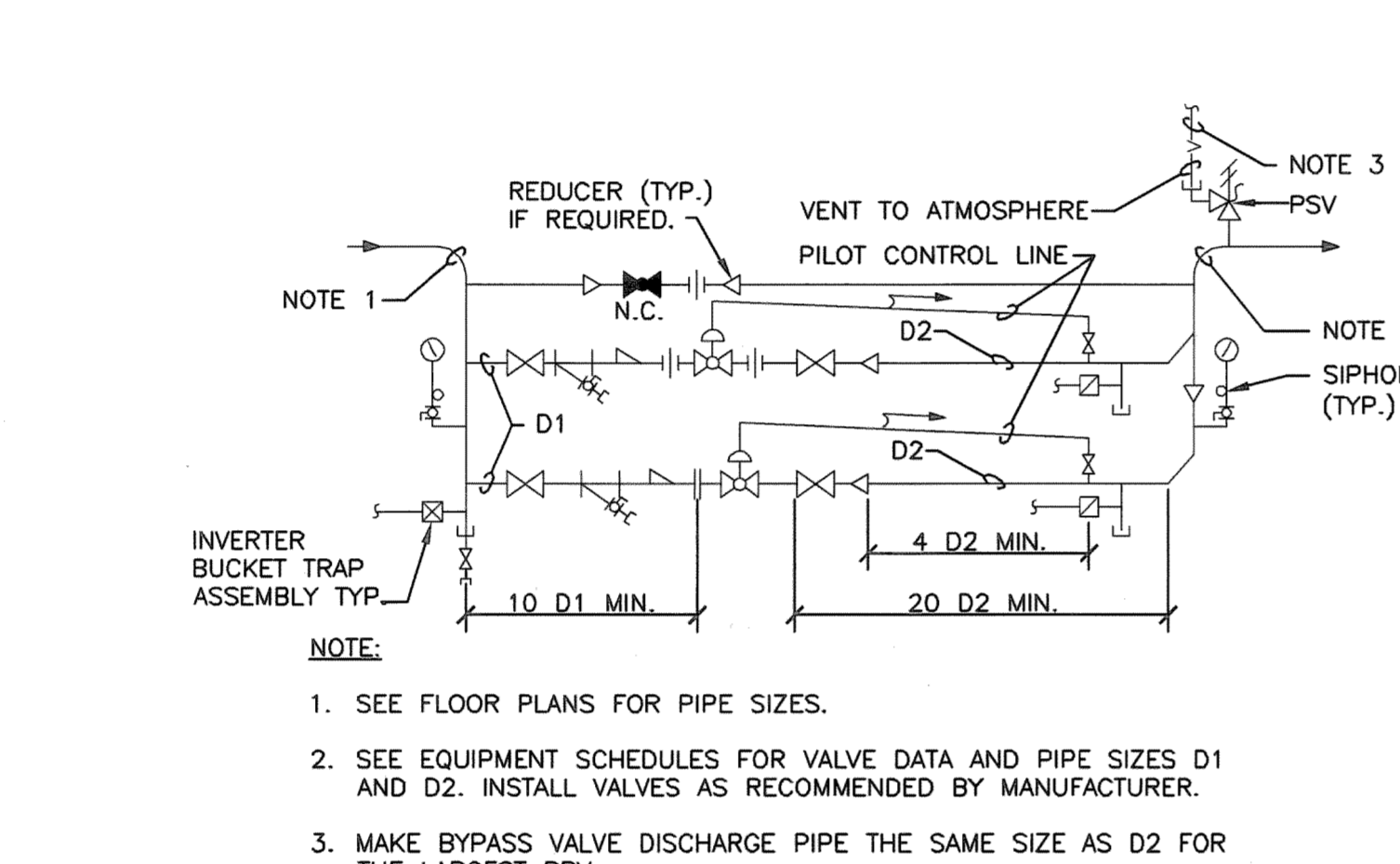
B6 EQUIPMENT ANCHORING - PACKAGED BOILER AND DEAEATOR AND CONDENSATE STORAGE TANKS
SCALE: NONE



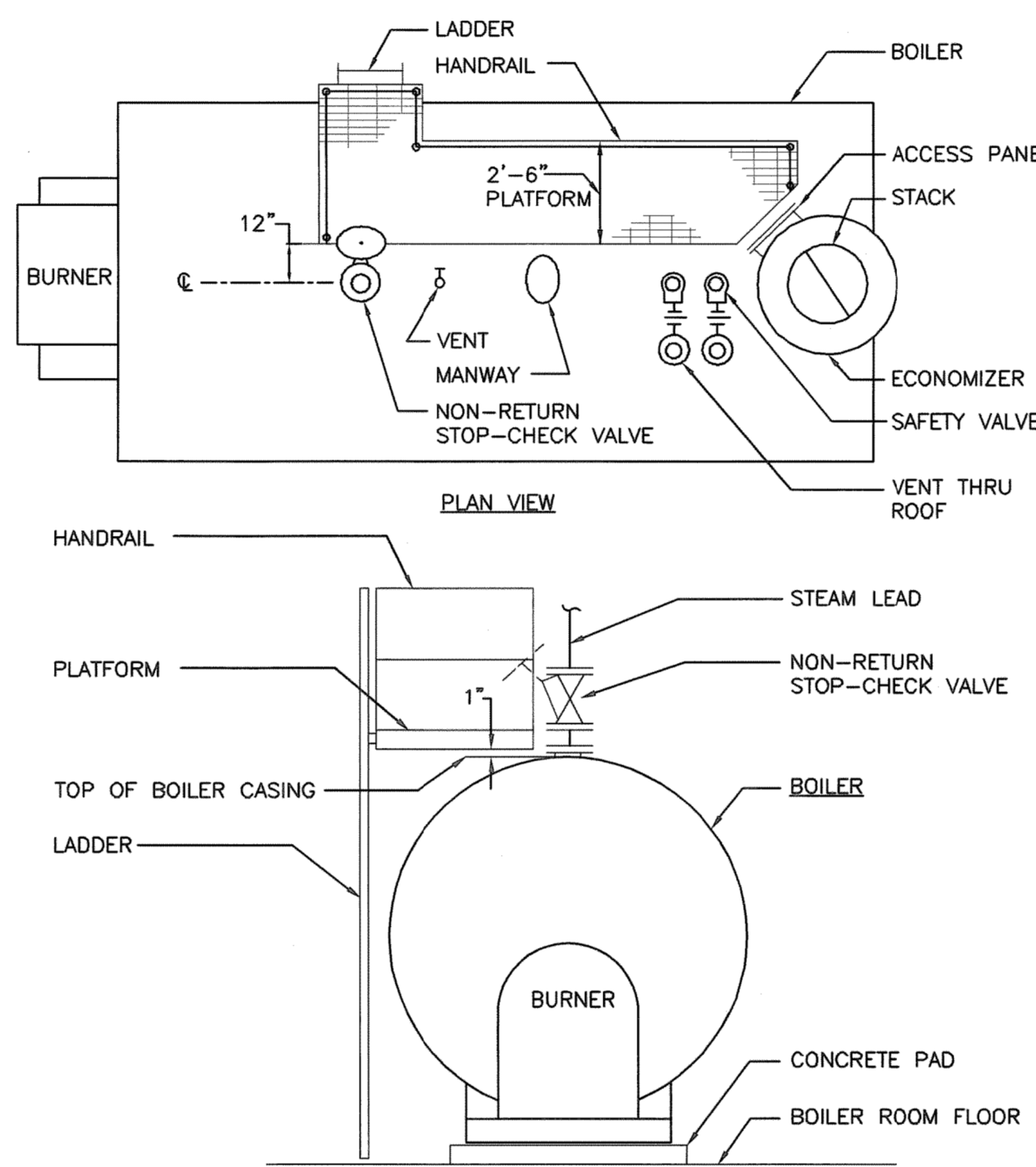
B8 FIRE TUBE BOILER
SCALE: NONE



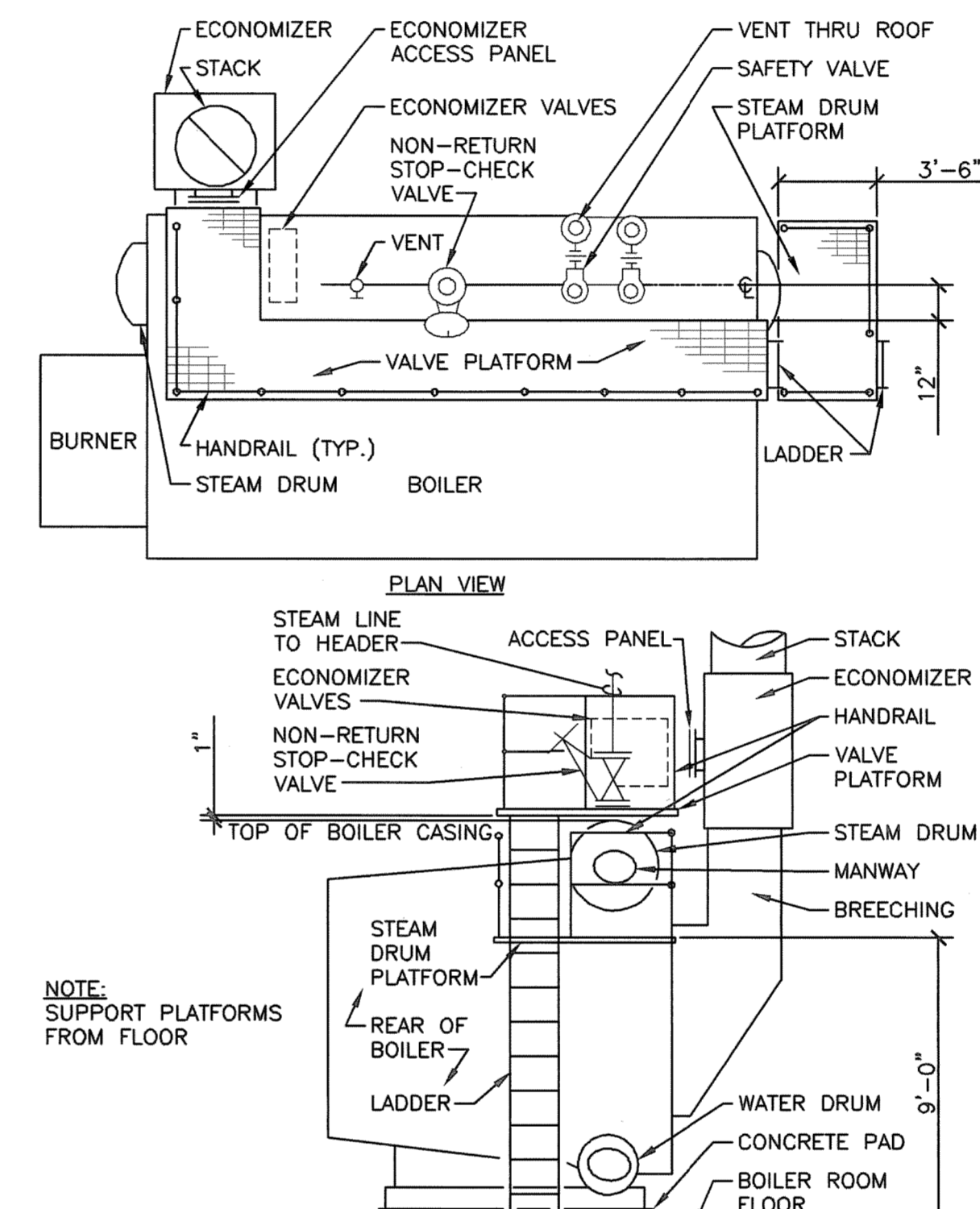
D1 CHEMICAL FEED SYSTEM - PUMPED TYPE
SCALE: NONE



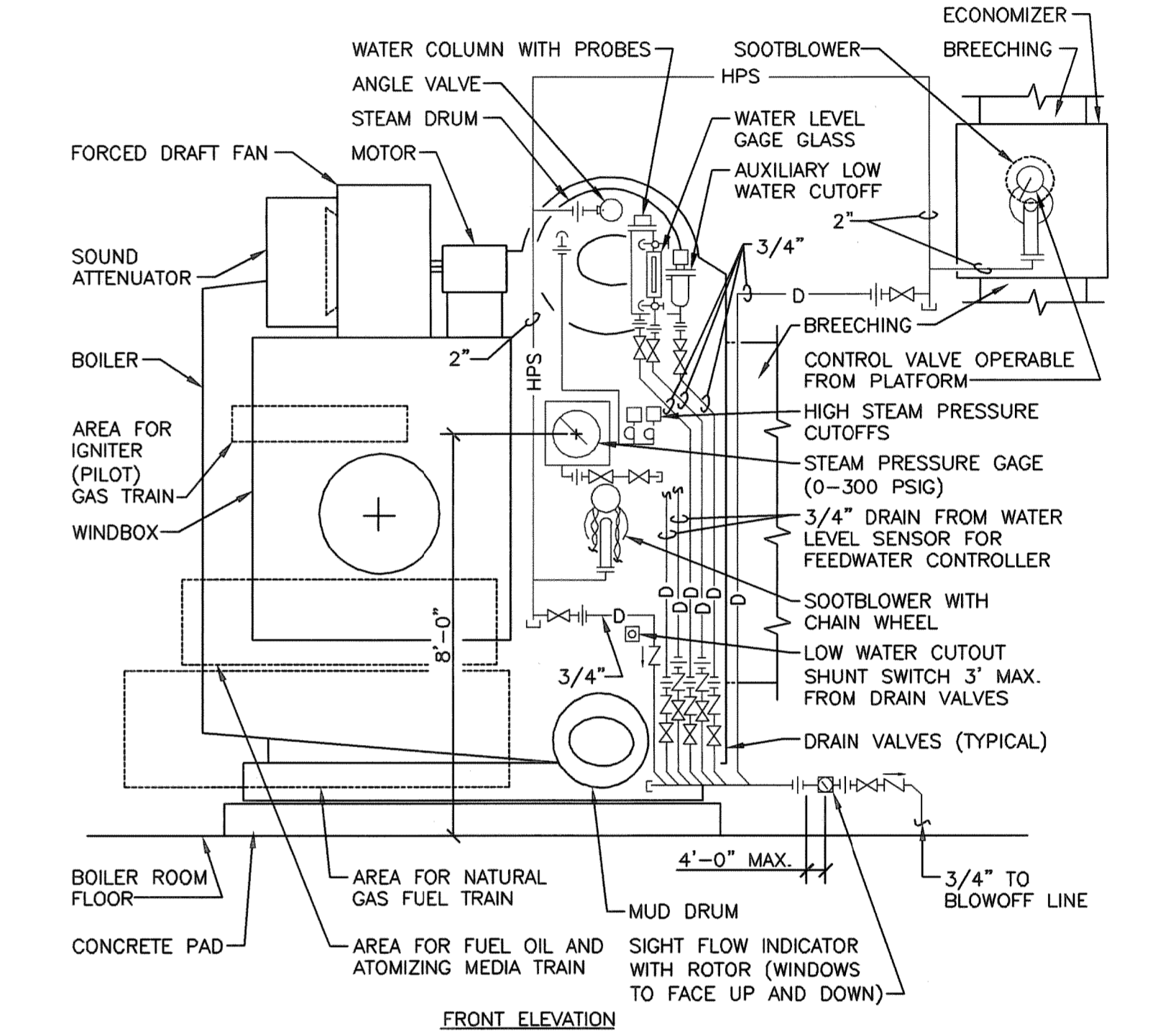
D2 STEAM PRESSURE REDUCING STATION DOUBLE VALVE (1/3 AND 2/3)
SCALE: NONE



D4 ACCESS PLATFORM ARRANGEMENT
SCALE: NONE



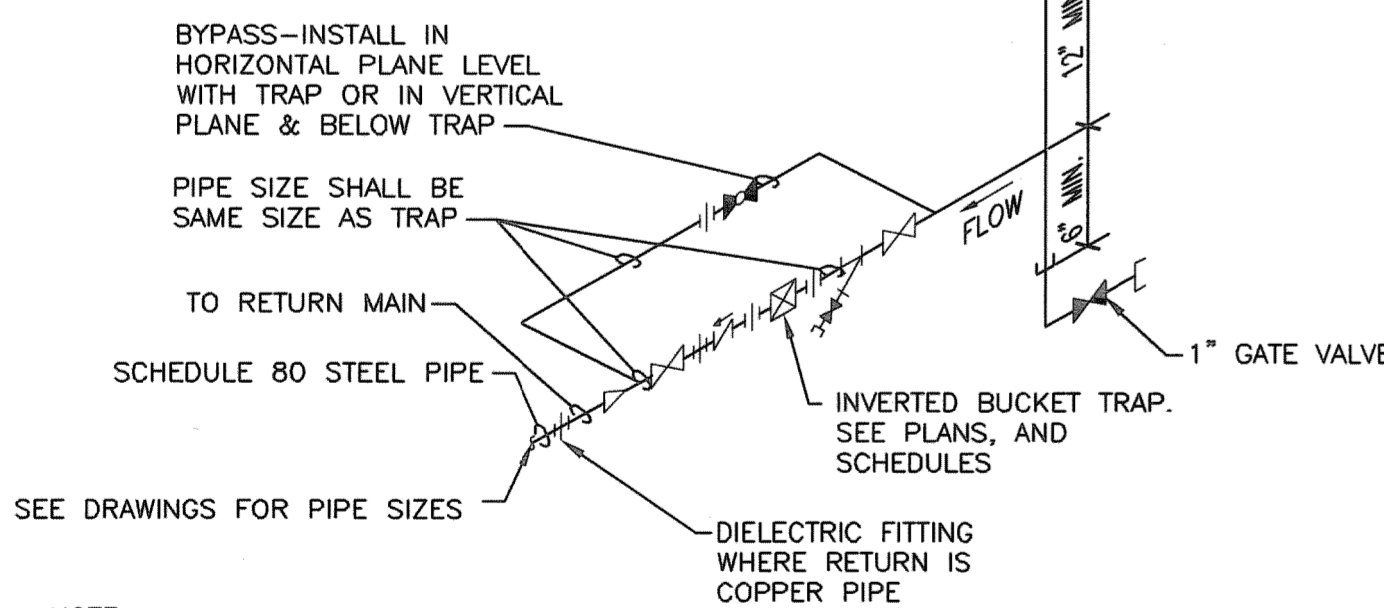
D7 ACCESS PLATFORM ARRANGEMENT WATER TUBE BOILER
SCALE: NONE



D9 WATER TUBE BOILER
SCALE: NONE

DESIGNATED AS:	COND. (LB/HR)	TRAP SIZE
MPDA-1 OR HPDA-1	0-100	1/2"
MPDA-2 OR HPDA-2	101-370	3/4"
MPDA-3 OR HPDA-3	371-700	1"
MPDA-4 OR HPDA-4	701-1070	1-1/4"
MPDA-5 OR HPDA-5	1071-1500	1-1/2"
MPDA-6 OR HPDA-6	1501-2870	2"

NOTE: 1. CAPACITIES BASED ON 2 PSI PRESSURE DROP.

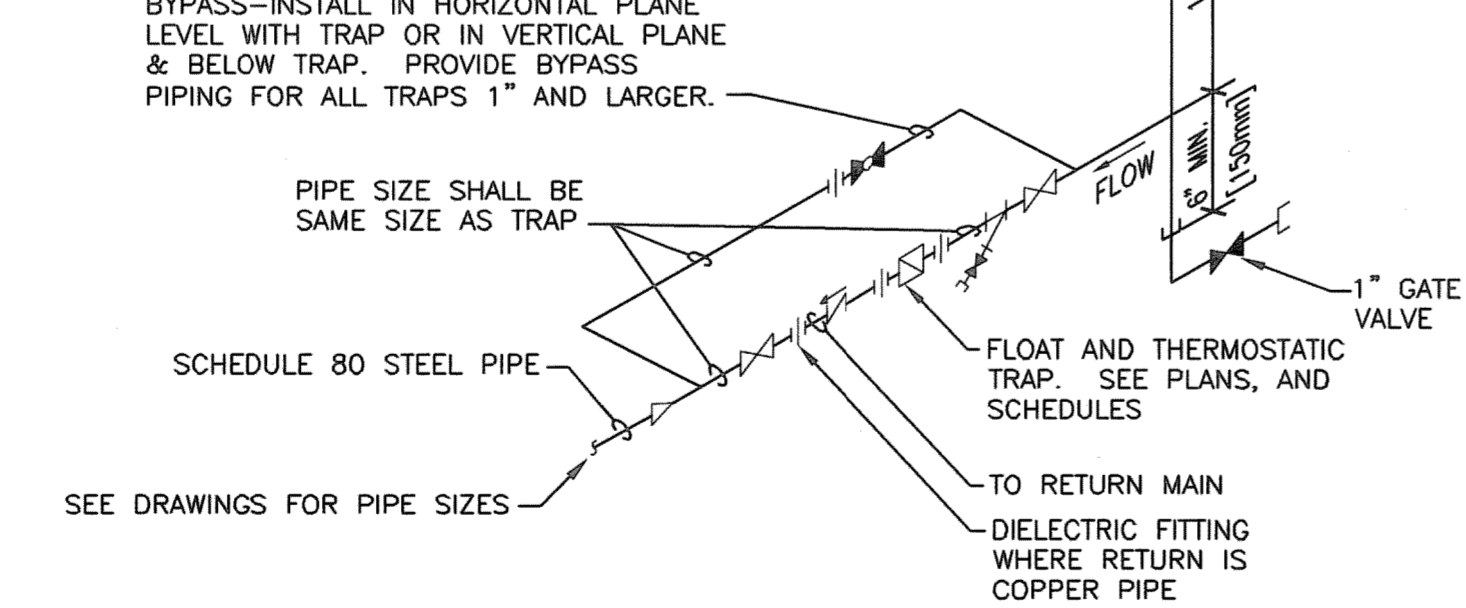


NOTE: 1. ALL DRIP POINTS ON STEAM MAINS SHALL BE PROVIDED WITH A 12" MINIMUM HIGH DRIP LEG FROM BOTTOM OF STEAM MAIN TO TRAP INLET. DRIP LEG SHALL HAVE 6" SCALE POCKET BELOW TRAP INLET. 2. PROVIDE BYPASS PIPING.

F1 INVERTED BUCKET STEAM TRAP ASSEMBLY
SCALE: NONE

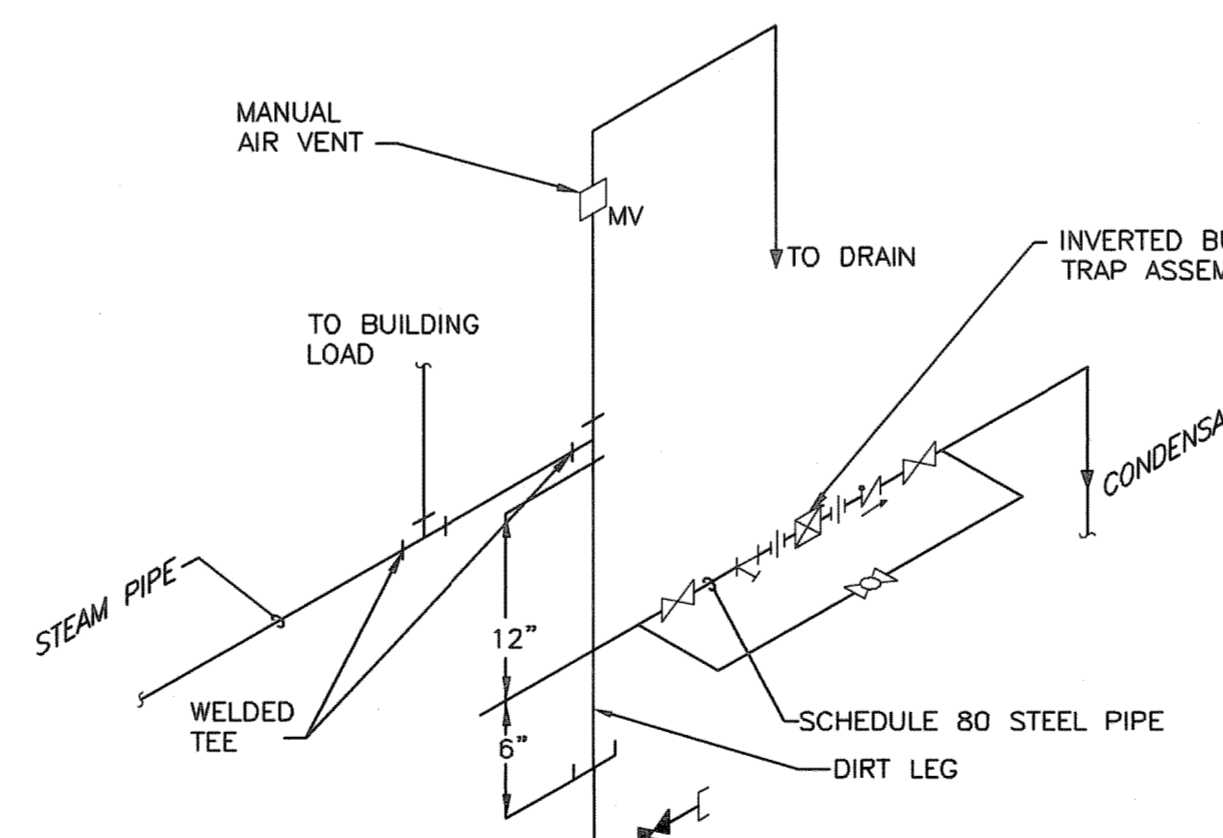
DESIGNATION:	LBS. PER HOUR	TRAP SIZE
LPDA-1	0 - 70	3/4"
LPDA-2	71 - 175	1"
LPDA-3	176 - 425	1-1/4"
LPDA-4	426 - 850	1-1/2"
LPDA-5	851 - 1775	2"

NOTE: CAPACITIES BASED ON 1/4 PSI P.D.

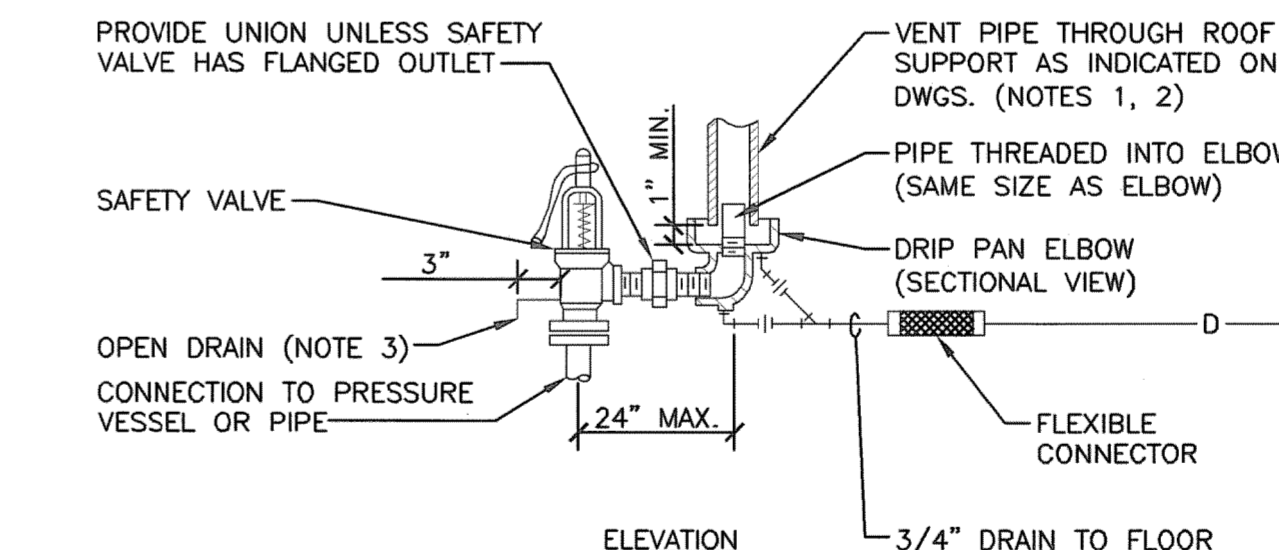


NOTE: 1. ALL DRIP POINTS ON STEAM MAINS SHALL BE PROVIDED WITH A 12" MINIMUM HIGH DRIP LEG FROM BOTTOM OF STEAM MAIN TO TRAP INLET. DRIP LEG SHALL HAVE 6" SCALE POCKET BELOW TRAP INLET. 2. PROVIDE BYPASS PIPING.

F3 FLOAT AND THERMOSTATIC STEAM TRAP ASSEMBLY
SCALE: NONE

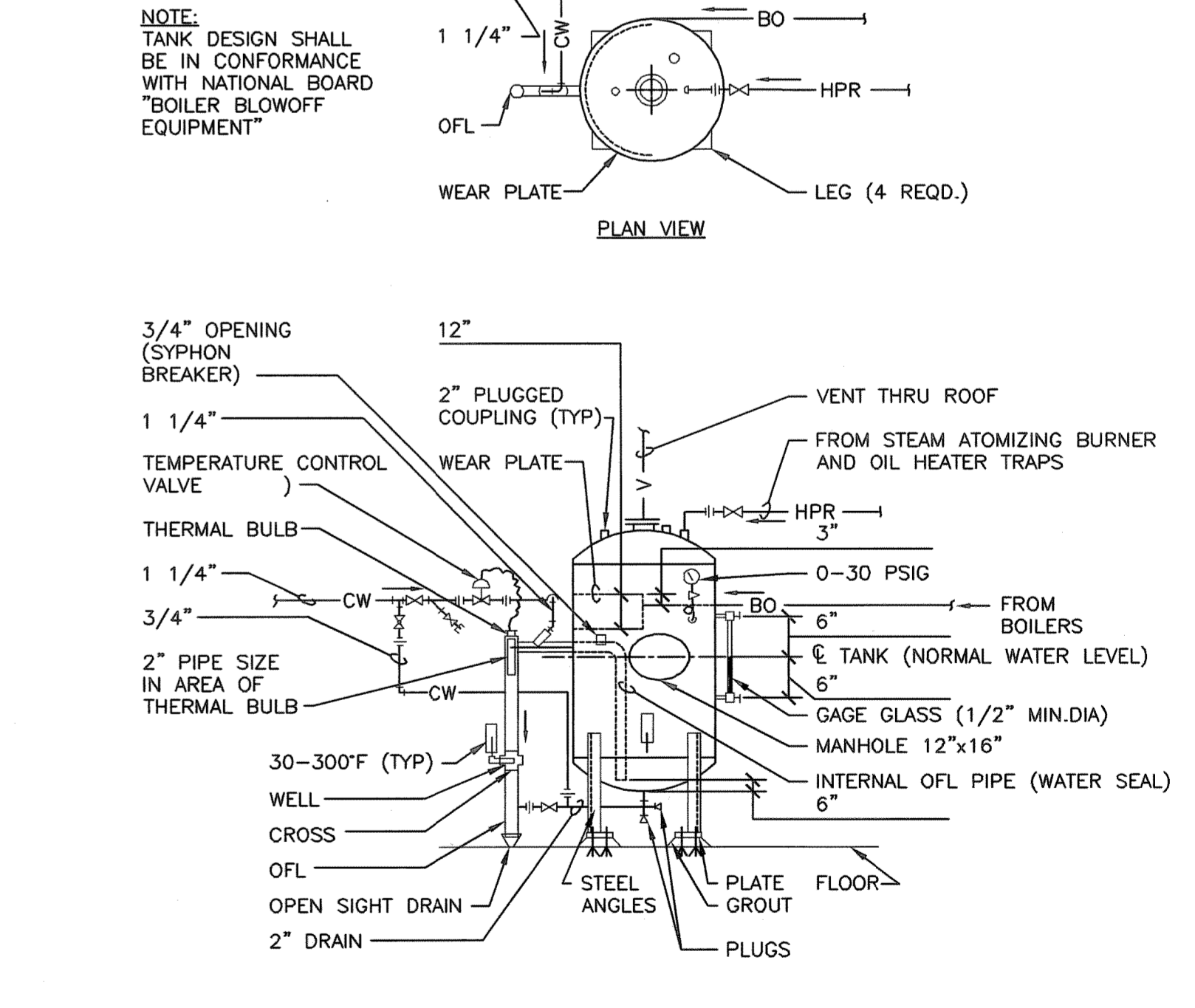


F5 END OF STEAM LINE DRIP TRAP
SCALE: NONE



NOTES: 1. UNLESS OTHERWISE SHOWN ON THE DRAWINGS, SIZE THE VENT PIPE SO THAT STEAM IS NOT BLOWN OUT AT THE VENT PIPE ENTRANCE. UTILIZE THE CALCULATION METHOD CONTAINED IN ANSI B31.1. POWER PIPING CODE, APPENDIX II. 2. VENT PIPE SHALL TERMINATE 7'-0" MIN. ABOVE FINISHED ROOF. 3. DISCHARGE OF DRAIN MUST BE DIRECTED AWAY FROM PLATFORMS OR OTHER AREAS WHICH PERSONNEL MAY OCCUPY. 4. DO NOT CONNECT ANY OTHER DRAIN TO THE DRIP PAN ELBOW DRAIN PIPE.

F7 STEAM SAFETY VALVE
SCALE: NONE



F9 BOILER BLOWDOWN TANK
SCALE: NONE

REVISION NO.	REVISION DESCRIPTION
1	
2	
3	
4	
5	
6	
7	
8	
9	
10	

Department of Veterans Affairs
William Jennings Bryan Dorn
VA Medical Center
6439 Garners Ferry Road
Columbia, SC 29209

Architect/Engineer Address
Harrell, Saltrick & Hopper
8016 TOWER POINT DRIVE
CHARLOTTE, NC 28227
P 704.814.1320
F 704.321.0633
WWW.HSHPC.COM
COPYRIGHT © 2011 HARRELL, SALTTRICK & HOPPER, PC
HSH PROJECT # 11010

Recommended Approvals:
1. MEDICAL DIRECTOR
2. ASSOCIATE DIRECTOR
3. CHIEF OF STAFF
4. ASSOC. DIRECTOR
5. SERVICE LINE MGRS.

6. OPERATIONS SERVICE LINE MANAGER
7. INFECTION CONTROL MANAGER
8. SAFETY MANAGER
9. GENERAL ENGINEER
10. COTR

Drawing Title
MECHANICAL DETAILS
BUILDING IS FULLY SPRINKLERED

Project Title
REPLACE BOILER PLANT/ COGEN/CHP
Building Number
21
AutoCAD File Name
Const. Contract No.

Date
APRIL 10, 2012
Project Number
544-11-101
DRAWING No.
MP501

Veterans Affairs

100% CONSTRUCTION DOCUMENTS