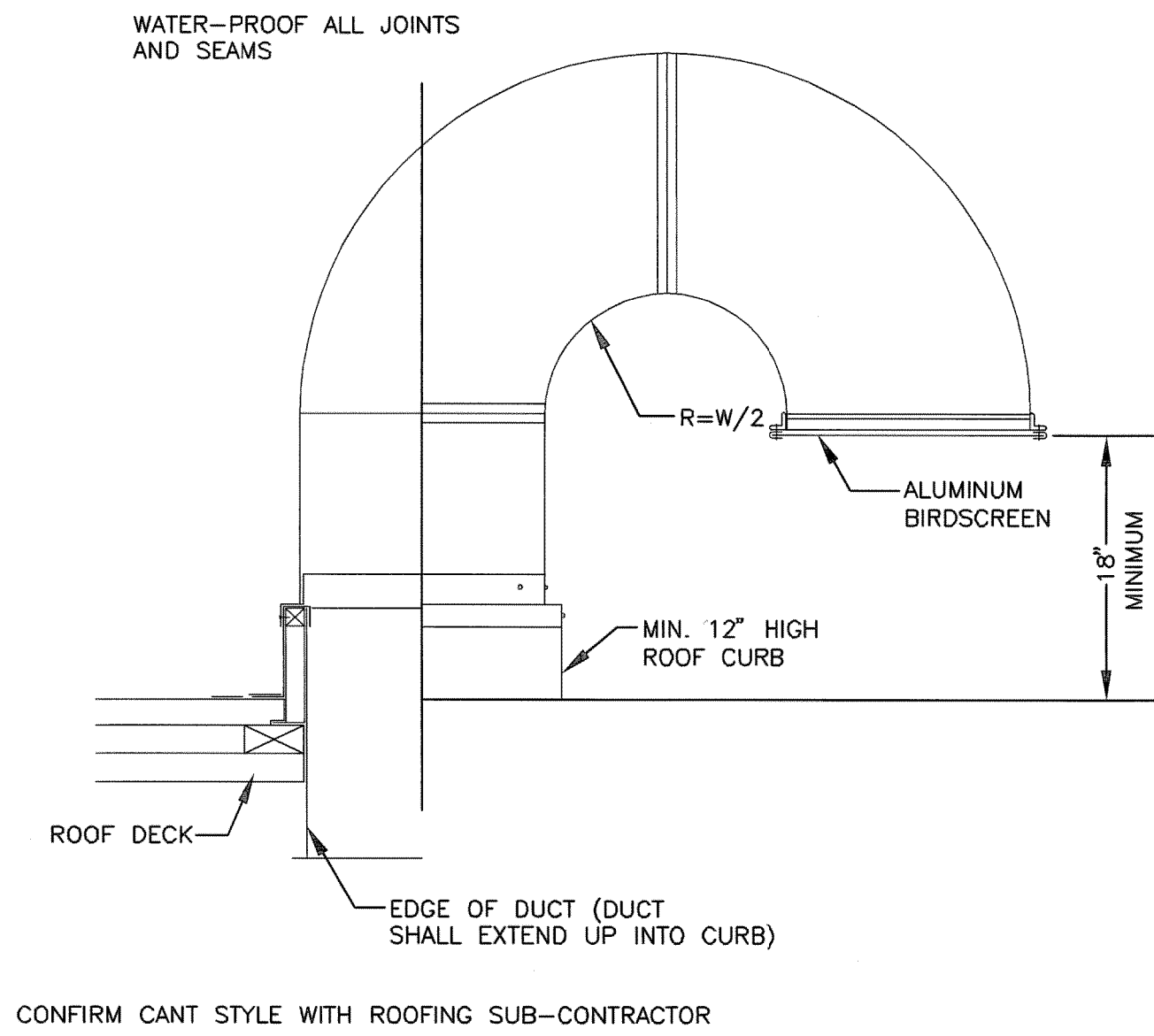
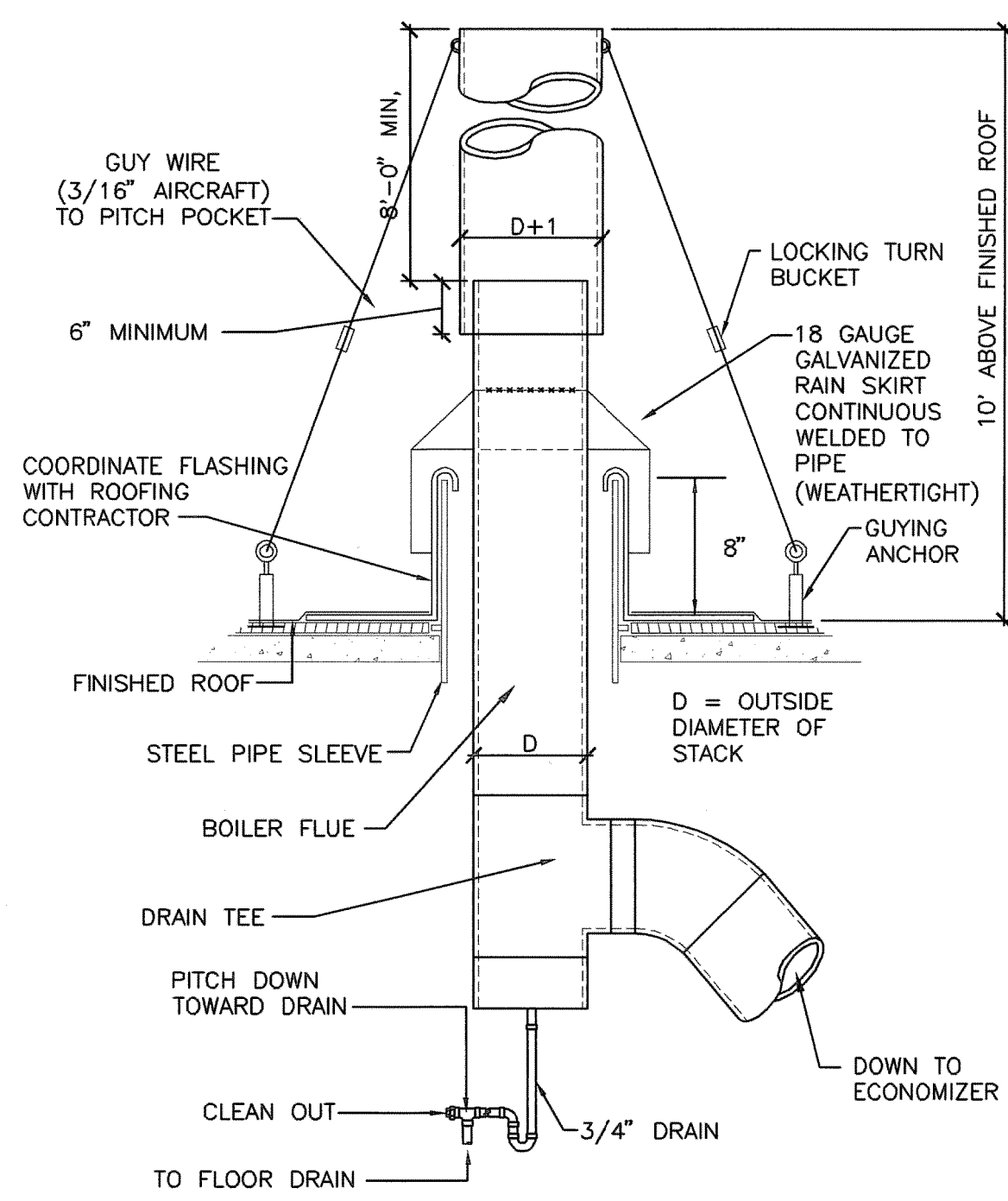


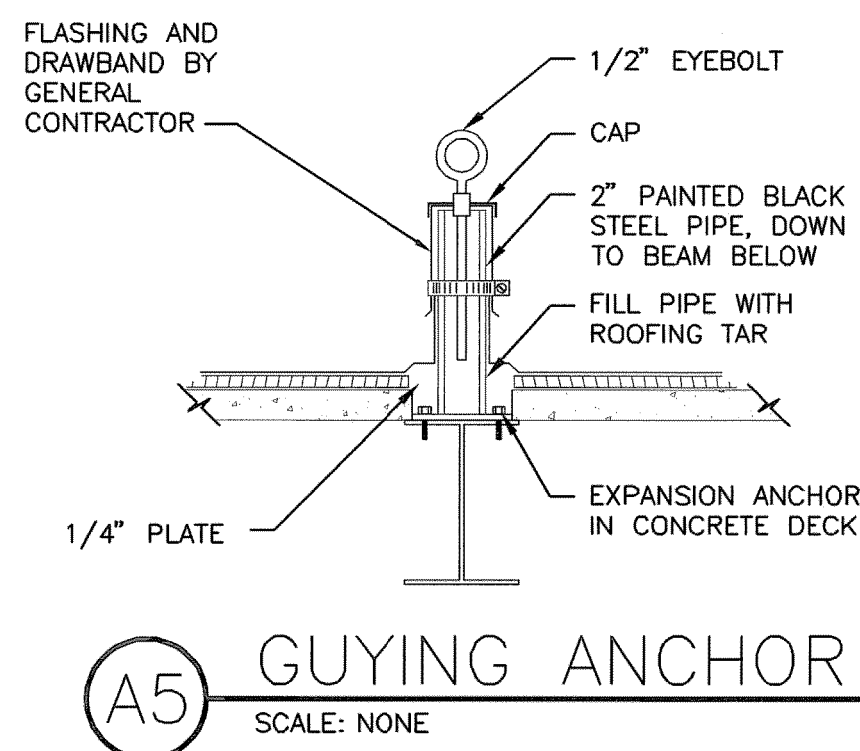
three inches = one foot
one and one half inches = one foot
one inch = one foot
three quarters inch = one foot
one half inch = one foot
three eighths inch = one foot
one quarter inch = one foot
one eighth inch = one foot



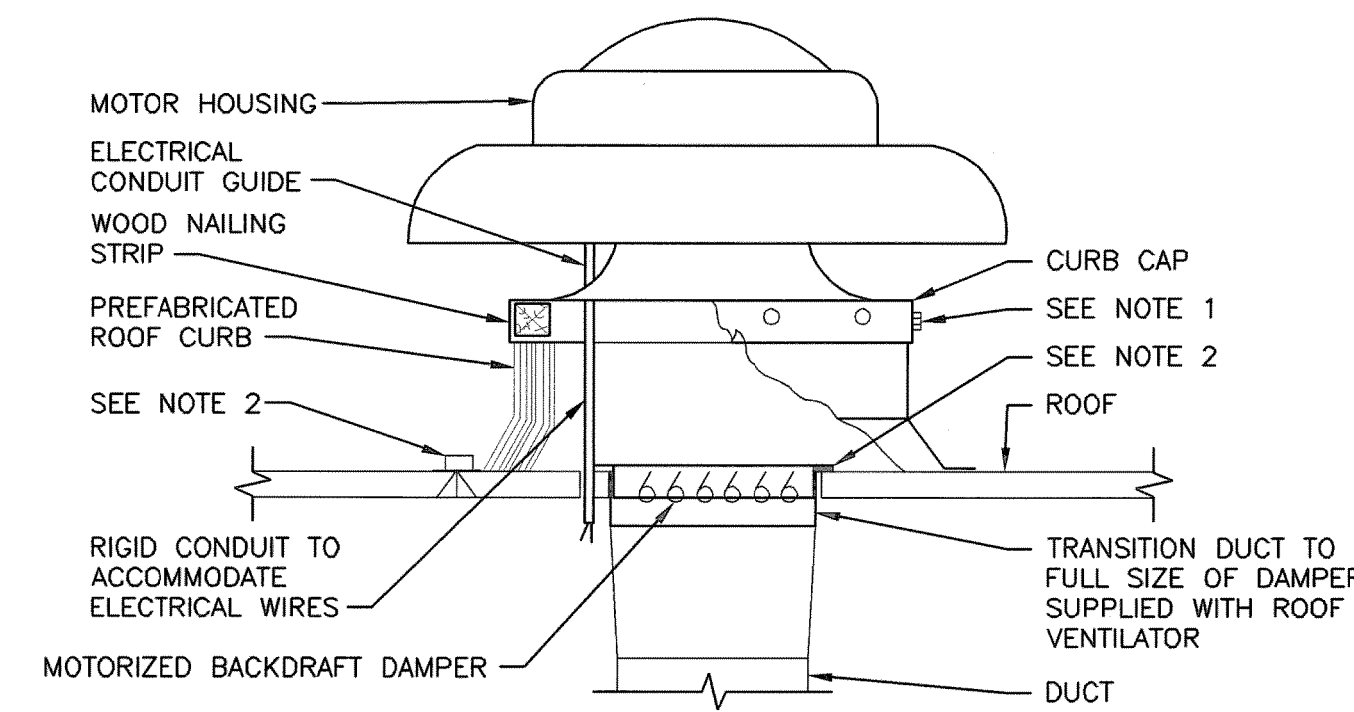
B1 GOOSENECK THRU ROOF
SCALE: NONE



B3 BOILER STACK DETAIL
SCALE: NONE

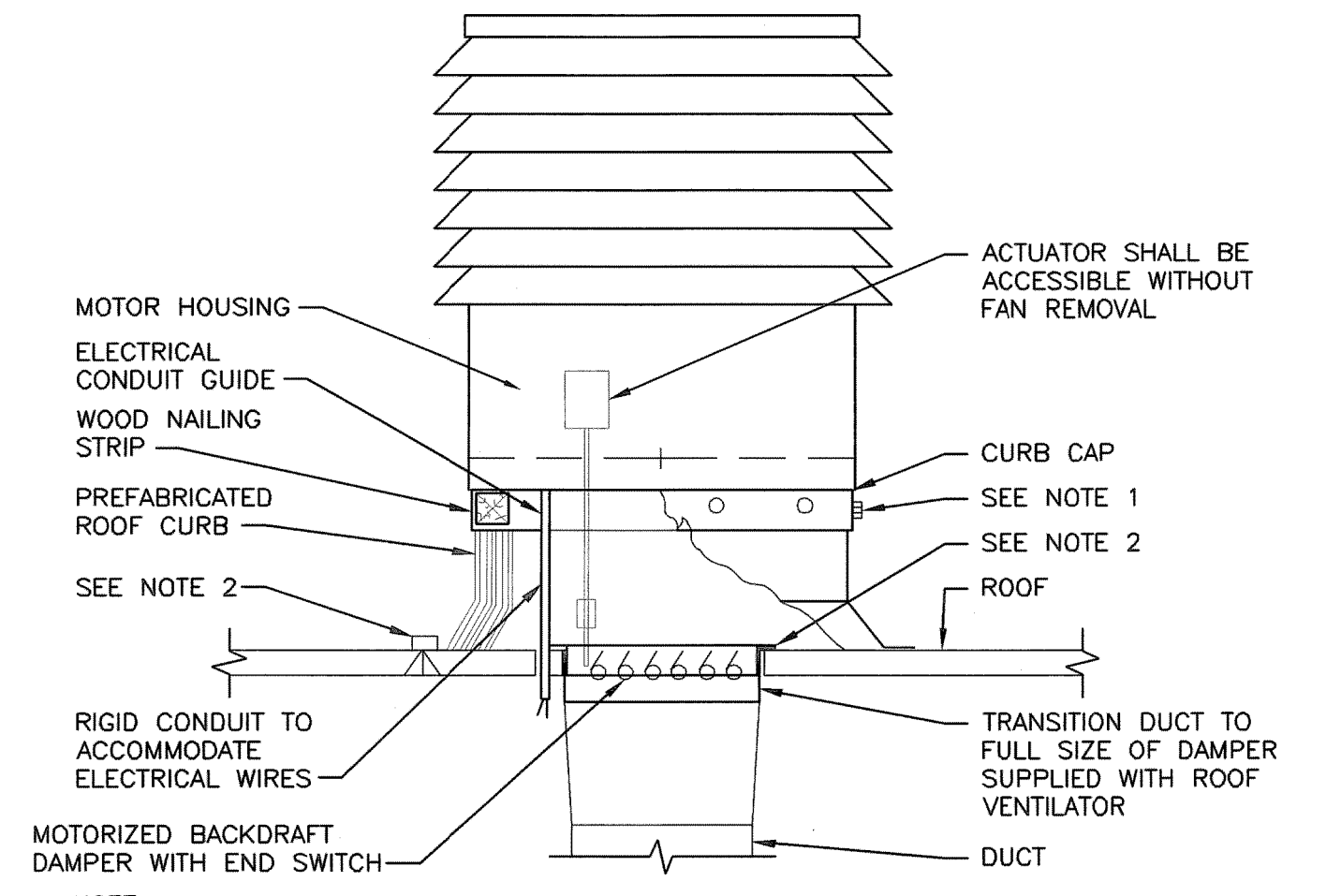


A5 GUYING ANCHOR
SCALE: NONE



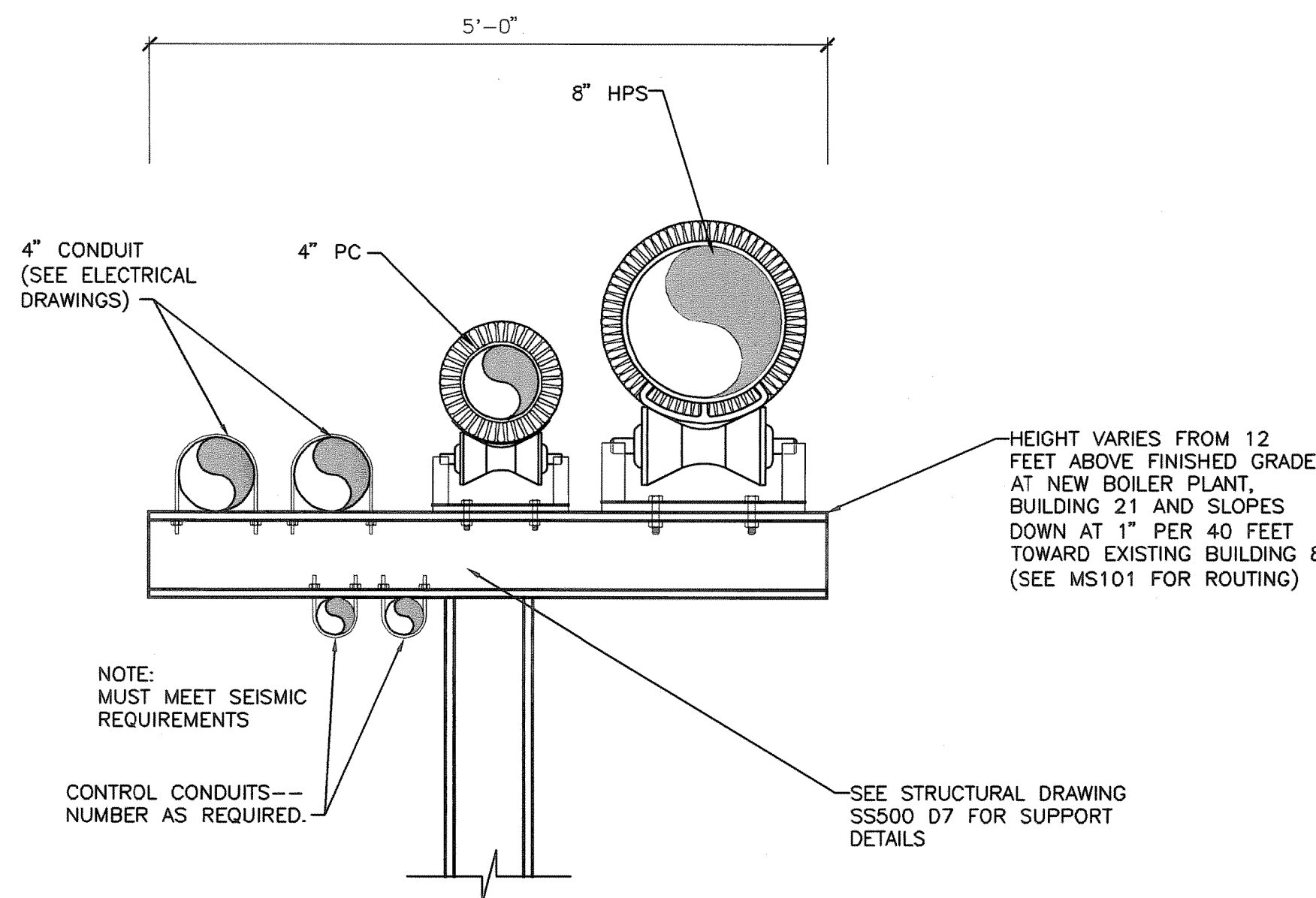
- NOTE:
1. SECURE CURB CAP TO WOOD NAILING STRIP WITH 3/8" CADMIUM PLATED LAG BOLTS NOT OVER 12" ON CENTER.
 2. SECURE ROOF CURB, DUCTWORK AND DAMPER TO ROOF WITH EXPANSION BOLTS (CONCRETE ROOF) OR RUST RESISTANT BOLTS (METAL DECK AND BAR JOIST ROOF).
 3. RUN ELECTRICAL LINES THROUGH CLEARANCE HOLE PROVIDED IN GRAVITY DAMPER, THEN THROUGH VENTILATOR ELECTRICAL CONDUIT GUIDE.

B7 POWER ROOF VENTILATOR
SCALE: NONE VA CAD DETAIL #: SD232400-01.DWG

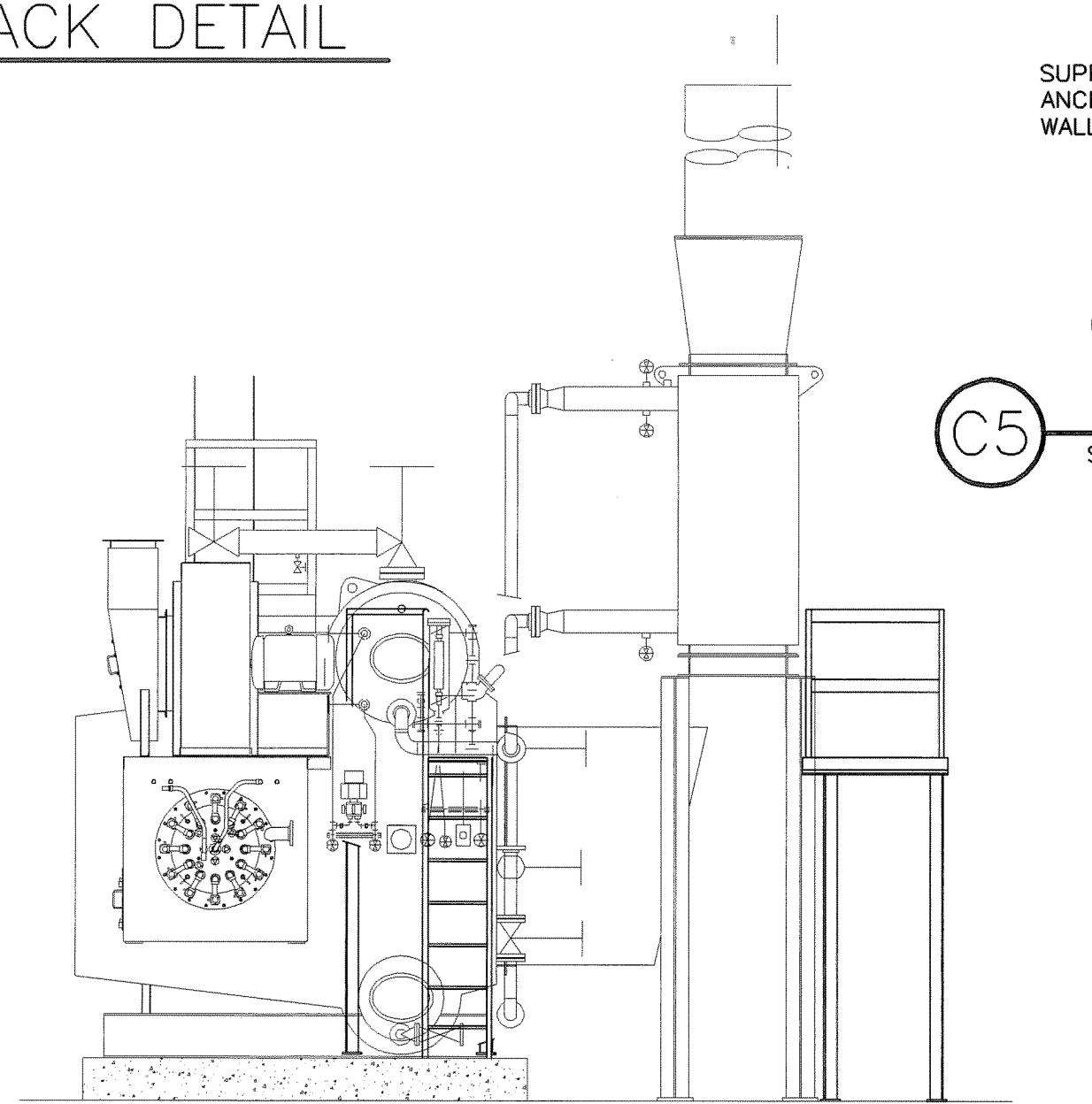


- NOTE:
1. SECURE CURB CAP TO WOOD NAILING STRIP WITH 3/8" CADMIUM PLATED LAG BOLTS NOT OVER 12" ON CENTER.
 2. SECURE ROOF CURB, DUCTWORK AND DAMPER TO ROOF WITH EXPANSION BOLTS (CONCRETE ROOF) OR RUST RESISTANT BOLTS (METAL DECK AND BAR JOIST ROOF).
 3. RUN ELECTRICAL LINES THROUGH CLEARANCE HOLE PROVIDED IN GRAVITY DAMPER, THEN THROUGH VENTILATOR ELECTRICAL CONDUIT GUIDE.

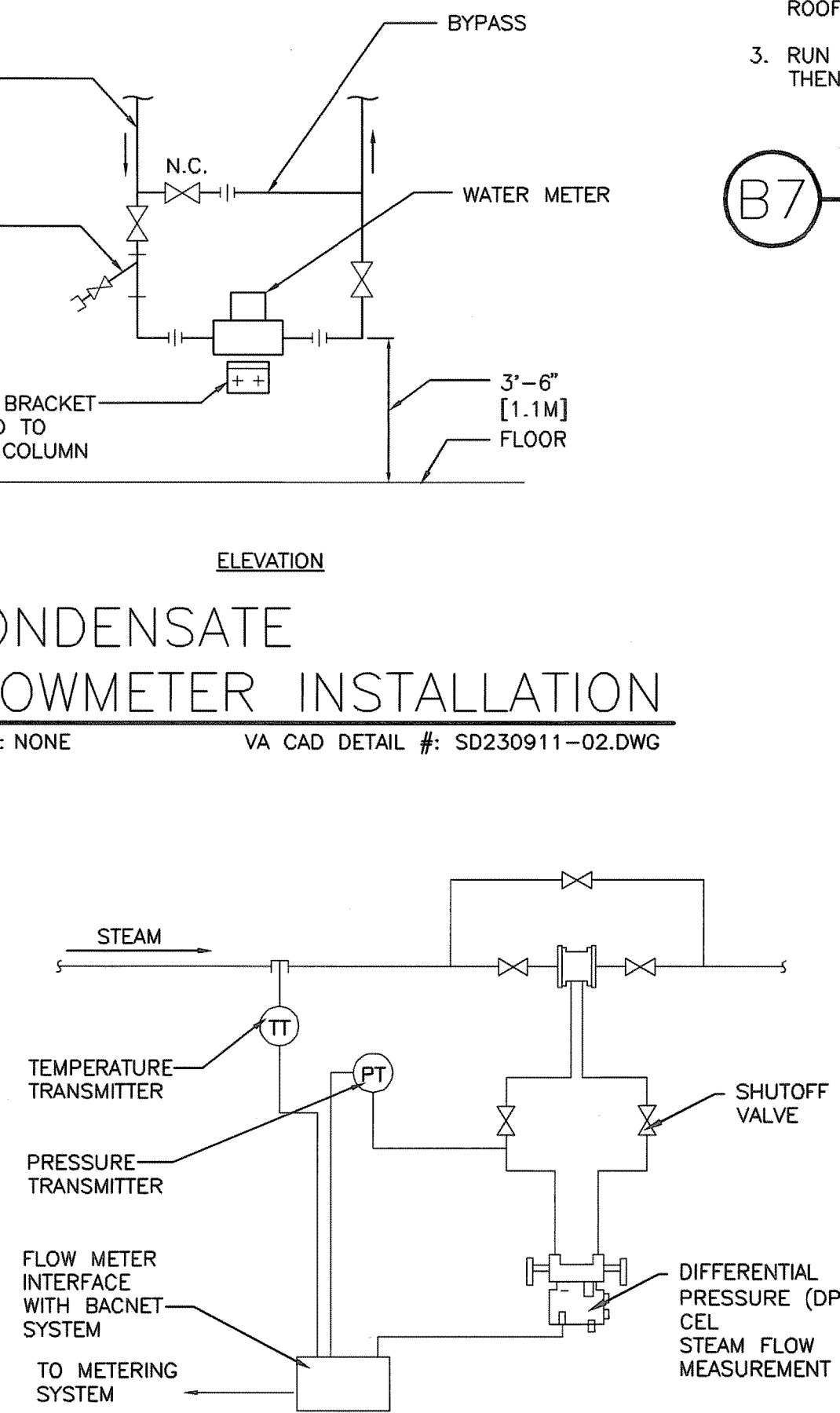
B9 AIR SUPPLY PACKAGE
SCALE: NONE



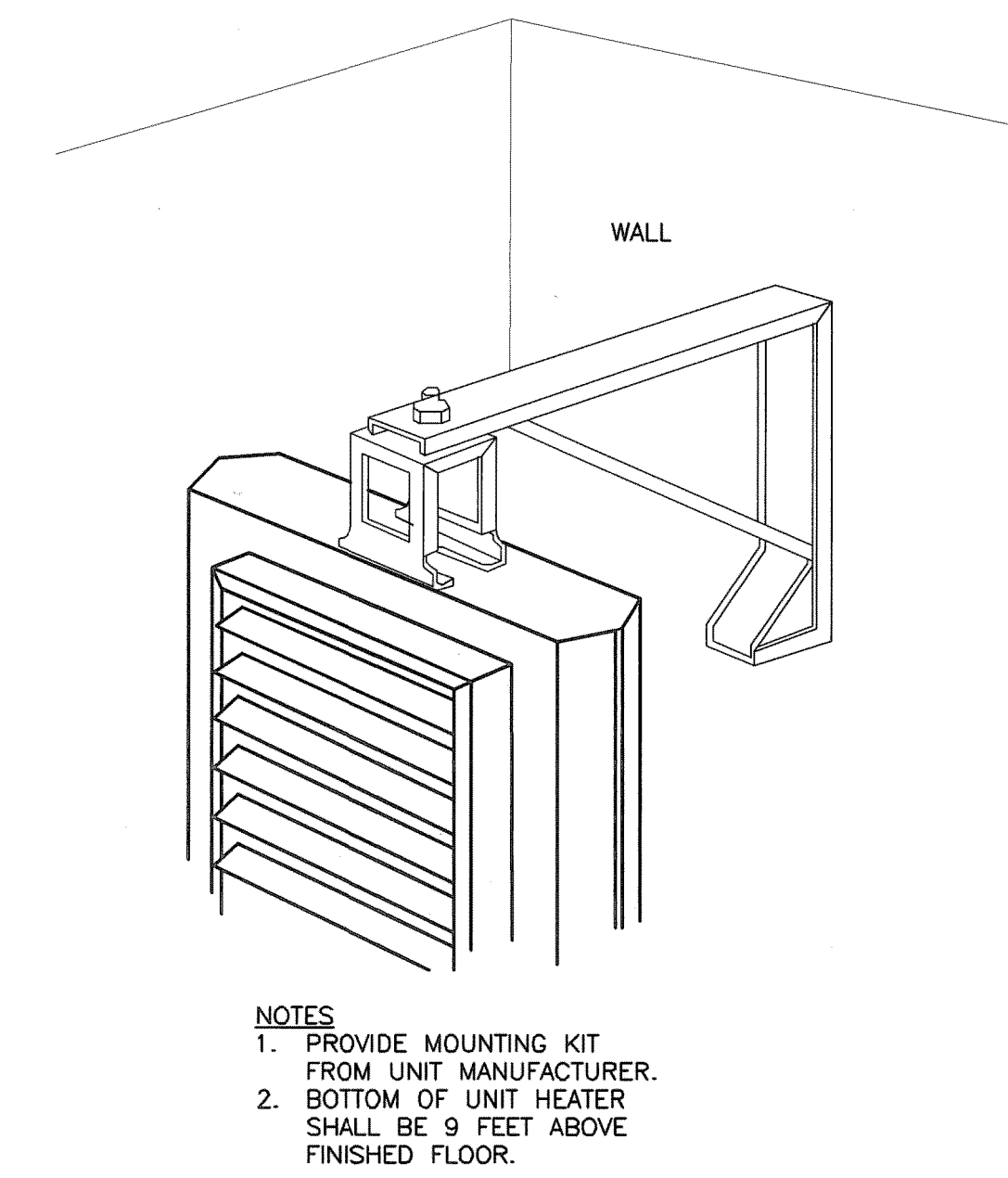
D1 UTILITY TREE DETAIL FOR EXTERIOR PIPING AND CONDUIT
SCALE: NONE



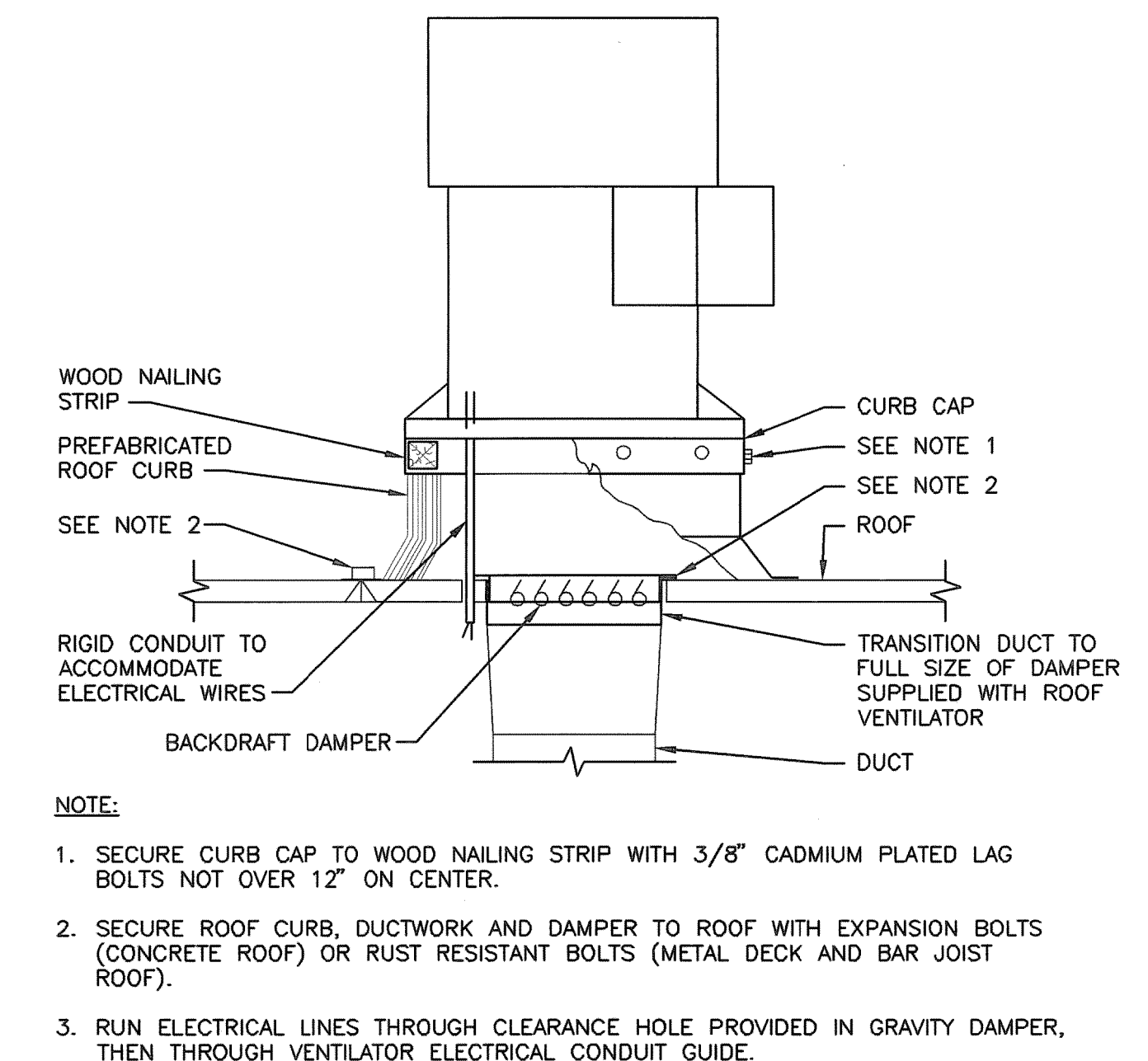
D4 WATERTUBE BOILER PLATFORM DETAIL - END VIEW
SCALE: NONE



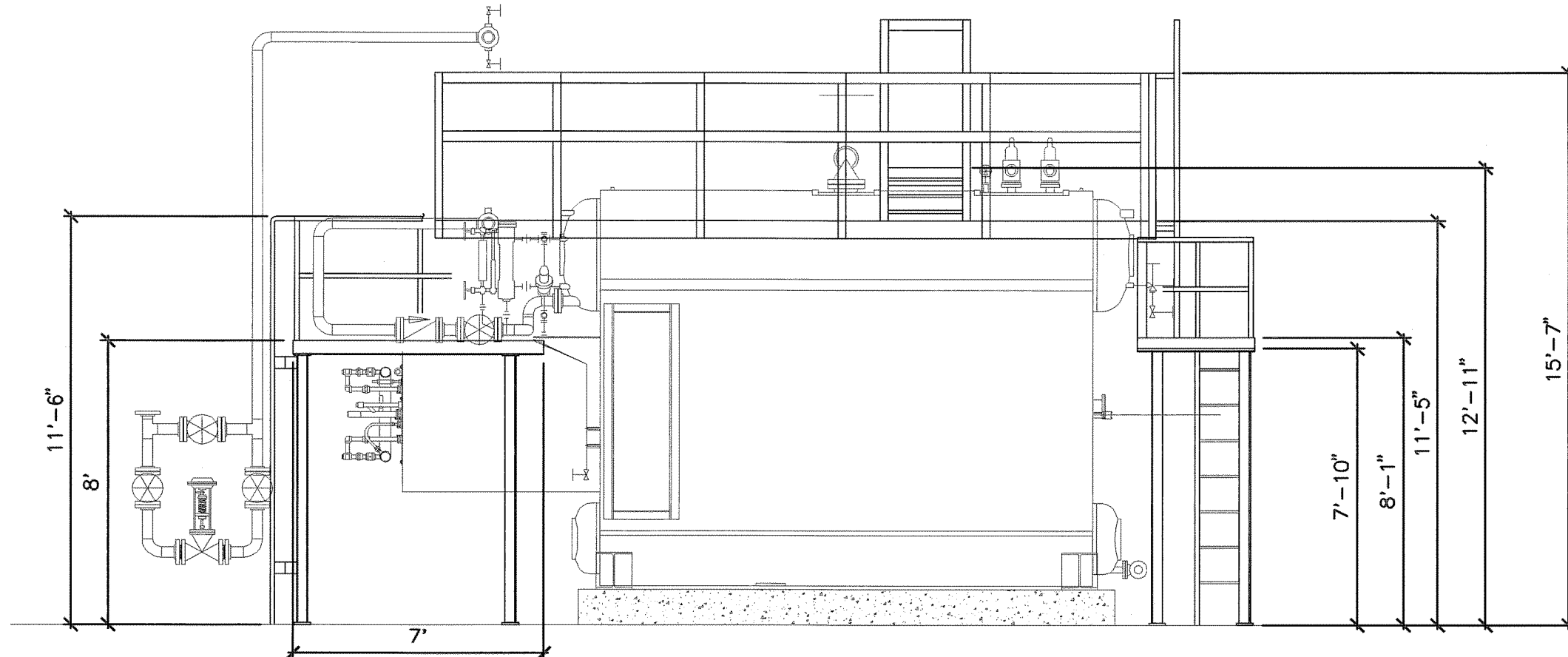
D6 STEAM FLOWMETER DETAIL
SCALE: NONE VA CAD DETAIL #: SD230923-10.DWG



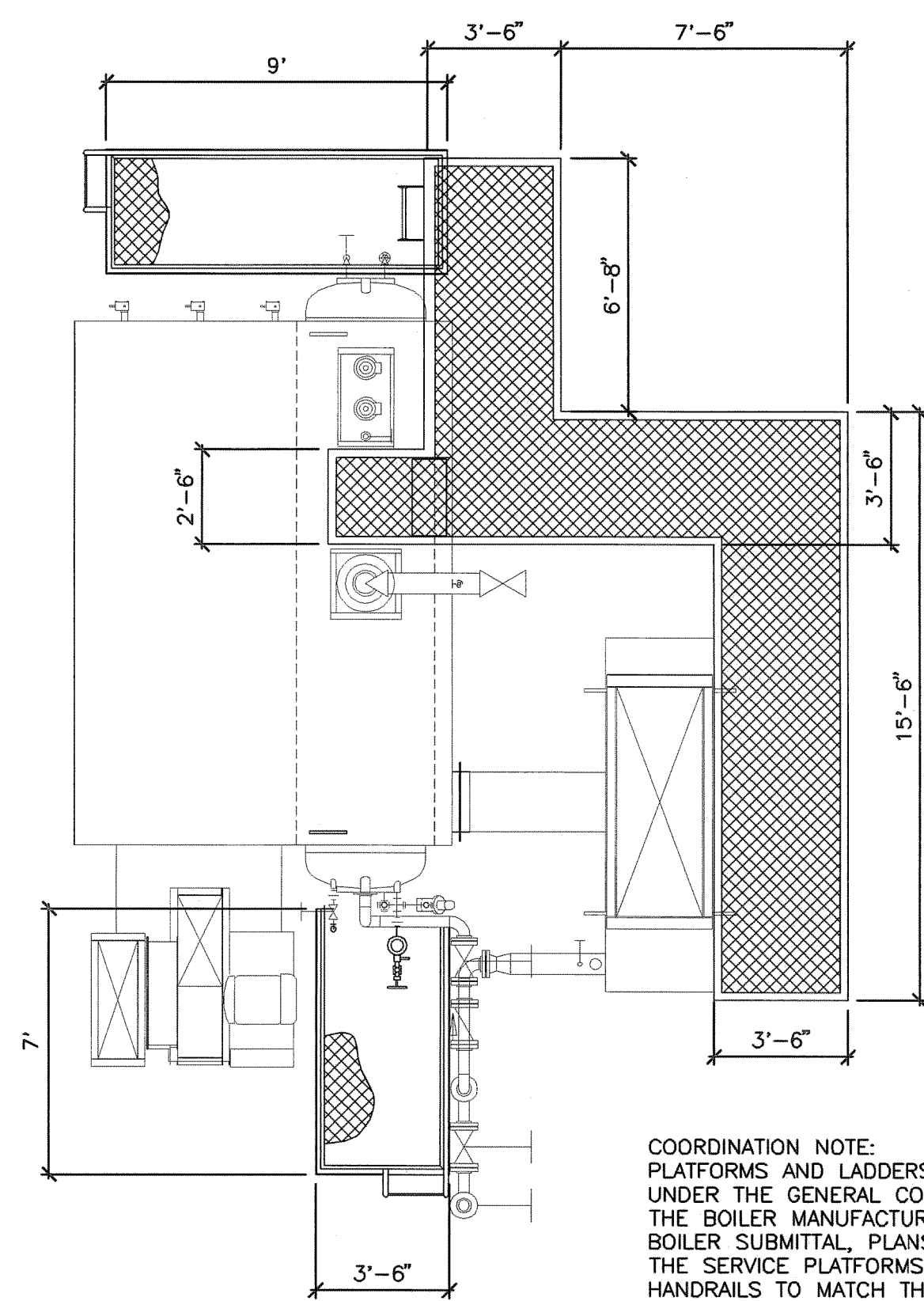
D7 UNIT HEATER SUPPORT DETAIL
SCALE: NONE



D9 UPBLAST EXHAUST VENTILATOR
SCALE: NONE

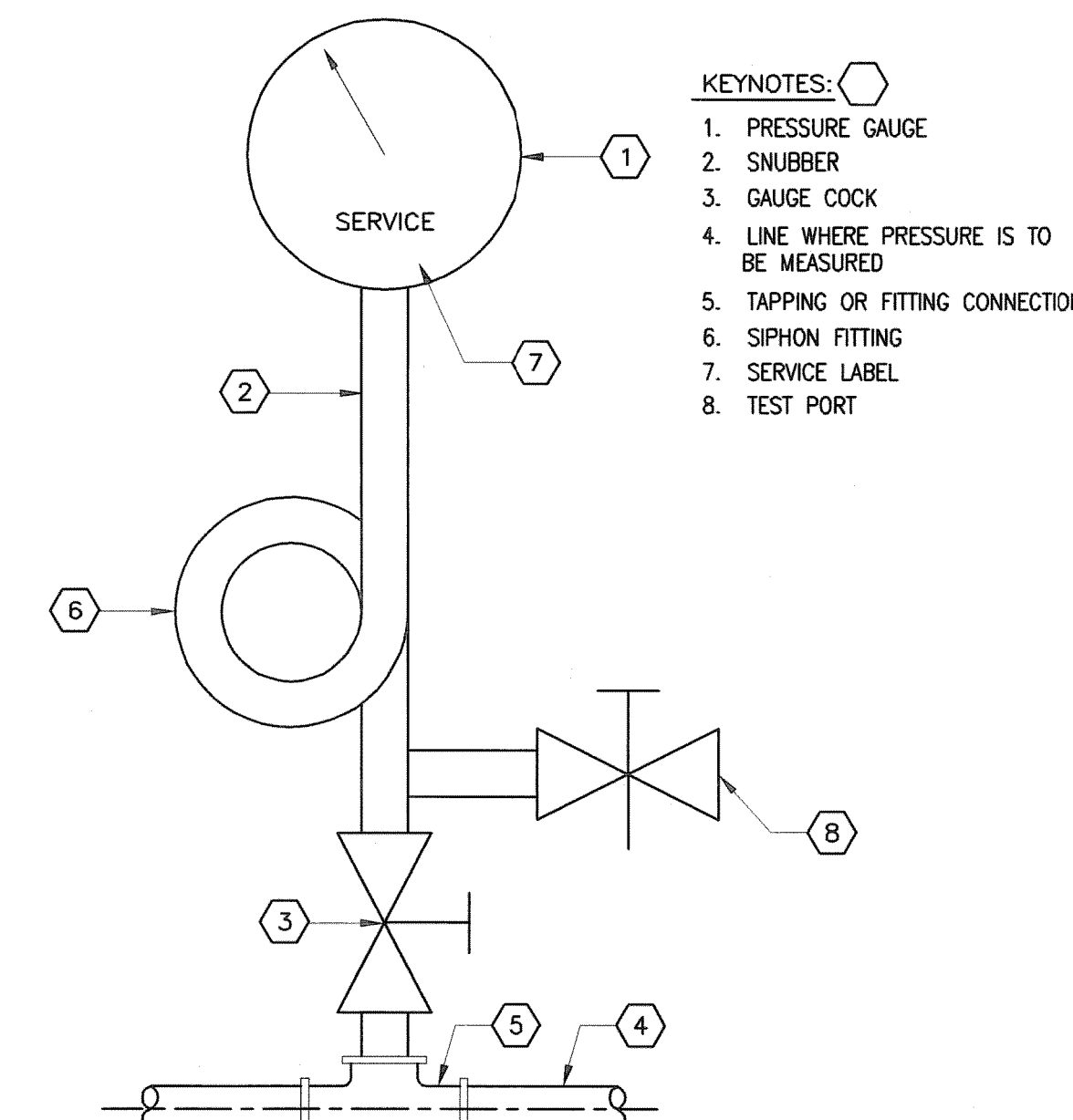


F1 WATERTUBE BOILER PLATFORM DETAIL - SIDE VIEW
SCALE: NONE

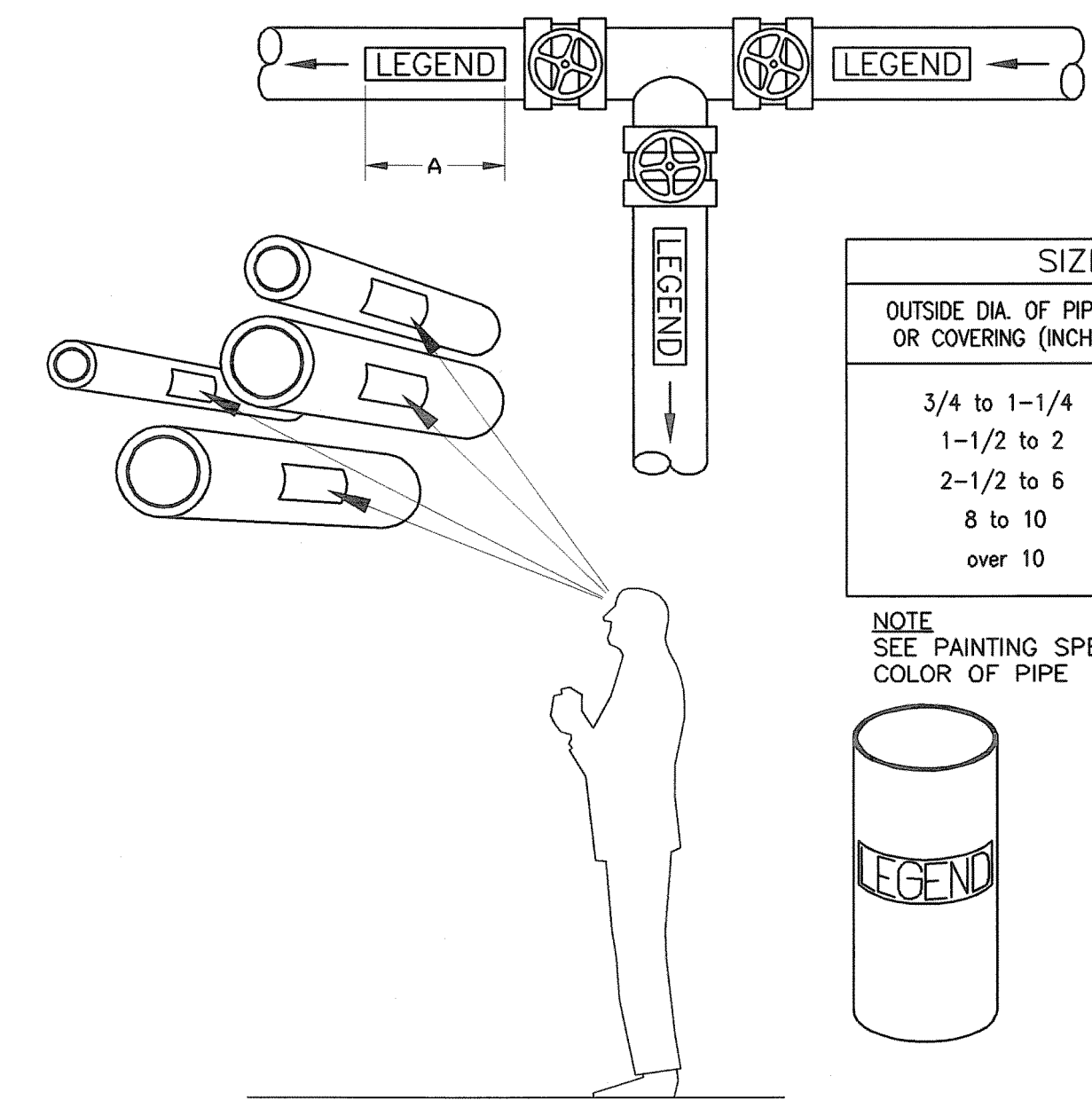


F4 WATERTUBE BOILER PLATFORM DETAIL - PLAN VIEW
SCALE: NONE

NOTE: DIMENSIONS GIVEN ARE FOR THE "BASIS-OF-DESIGN" BOILER. SEE THE COORDINATION NOTE.



F6 PRESSURE GAUGE INSTALLATION - STEAM SYSTEM
SCALE: NONE



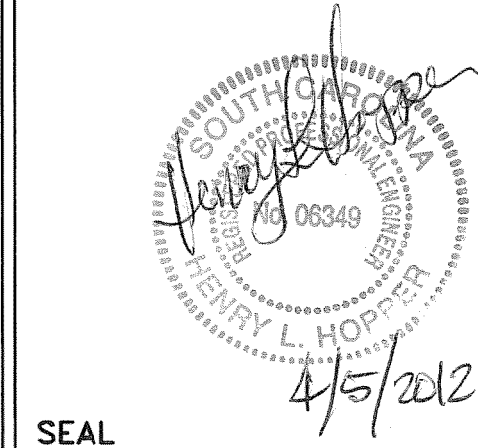
F8 PIPING SYSTEM IDENTIFICATION
SCALE: NONE

100% CONSTRUCTION DOCUMENTS

REVISION NO.	REVISION DESCRIPTION	By	Date
1			
2			
3			
4			
5			
6			
7			
8			
9			
10			



Department of Veterans Affairs
William Jennings Bryan Dorn
VA Medical Center
6439 Garners Ferry Road
Columbia, SC 29209



Architect/Engineer Address
Harrell, Saltrick & Hopper
Design & Management Solutions for the Built Environment
8016 TOWER POINT DRIVE
CHARLOTTE, NC 28227
P 704.814.1320
F 704.321.0833
WWW.HSHPC.COM
COPYRIGHT © 2011 HARRELL, SALTRICK & HOPPER, PC
HSH PROJECT # 11015

Recommended Approvals:

1. MEDICAL DIRECTOR	6. OPERATIONS SERVICE LINE MANAGER
2. ASSOCIATE DIRECTOR	7. INFECTION CONTROL MANAGER
3. CHIEF OF STAFF	8. SAFETY MANAGER
4. ASSOC. DIRECTOR	9. GENERAL ENGINEER
5. SERVICE LINE MGRS.	10. COTR

Drawing Title MECHANICAL DETAILS
BUILDING IS FULLY SPRINKLERED

Project Title REPLACE BOILER PLANT/ COGEN/CHP	Date APRIL 10, 2012
Drawn DWS	Project Number 544-11-101
Building Number 21	AutoCAD File Name
Checked	Reviewed
Const. Contract No.	DRAWING No. MP504

