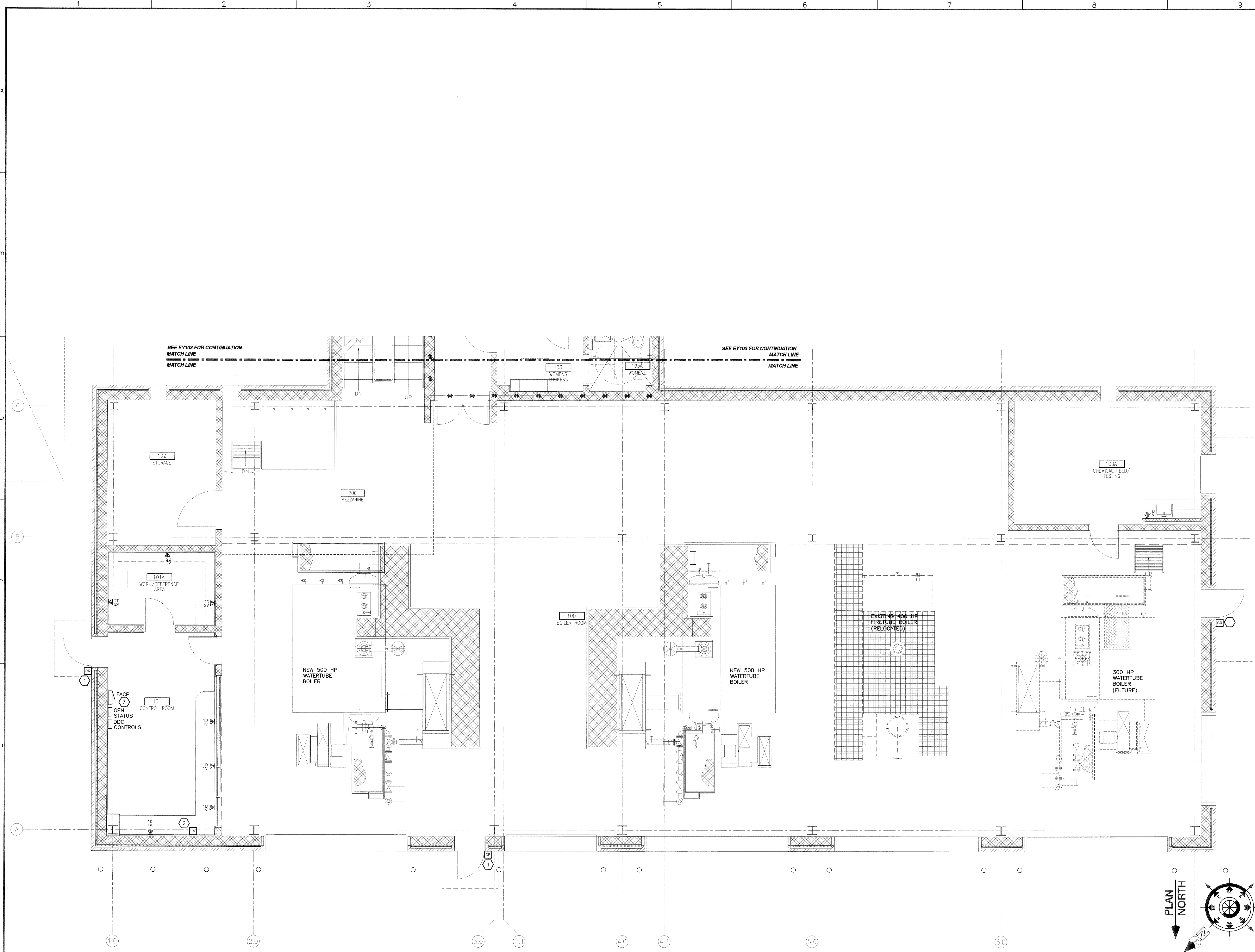


- DRAWING KEYNOTES
- 

1. SEE ACCESS CONTROL DIAGRAM DETAIL D7 SHEET E502 FOR ADDITIONAL INFORMATION.
2. SEE POWER/TV OUTLET DIAGRAM F1 SHEET E502 FOR ADDITIONAL INFORMATION.
3. FIRE ALARM PANEL SHOWN FOR REFERENCE ONLY. SEE FIRE ALARM SHEETS FOR FIRE ALARM DEVICES.

—◆—◆— (2) HOUR FIRE BARRIER
CMU, SEE ARCHITECTURAL PLANS FOR SIZES

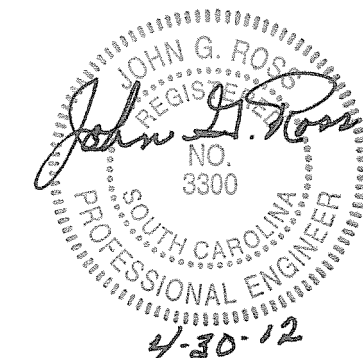
THE MECHANICAL CONTRACTOR SHALL TAKE THE LEAD IN PREPARATION OF COORDINATION DRAWINGS. SUCH DRAWINGS SHALL BE ARRANGED AND DETAILED THROUGHOUT AND FROM THE BEGINNING OF ALL OTHER CONTRACTS. THE MECHANICAL CONTRACTOR HAS A GENERAL OBLIGATION TO PROVIDE PLUMBING, SECTIONS AND ELEVATIONS. IT IS REQUIRED TO FULLY COORDINATE ALL NEW WORK WITH ITSELF AND EXISTING CONDITIONS. DRAW TO SCALE (AT NOT LESS THAN 3/8" = 1'-0"). DRAWINGS SHALL SHOW, BUT NOT BE LIMITED TO: ALL WALL RATINGS; ALL DUCTWORK; ALL AIR DISTRIBUTION; MECHANICAL EQUIPMENT; MECHANICAL PLUMBING; FIRE PROTECTION PLUMBING; ALL PLUMBING PLUMBING; CABLE TRAYS (WITH ELEVATIONS NOTED); LIGHTING FIXTURES (WITH ELEVATIONS NOTED); CEILING GRID AND JOINTS (WITH ELEVATIONS NOTED); AIR HANDLING UNITS (WITH ELEVATIONS NOTED); ALARM DEVICES AND SPEAKERS (WHERE CEILING MOUNTED); ELECTRICAL CONDUITS LARGER THAN 2-INCH DIAMETER; ELECTRICAL BUSWAY AND REQUIRED CLEARANCES; EQUIPMENT PROVIDED BY OTHERS THAT PROTRUDE INTO CEILING CAVITIES OR IMPEDE THE LOCATION OR ACCESS TO ABOVE CEILING PLUMBING, DUCTWORK OR OTHER EQUIPMENT. IT IS THE CONTRACTOR'S RESPONSIBILITY TO SHOW MATERIALS AND SYSTEMS OF ALL CONTRACTS. IF THERE ARE ANY OUTSTANDING ISSUES THAT CANNOT BE RESOLVED, CONSULT WITH THE ARCHITECT AND/OR ENGINEER (THROUGH THE VA COTR) FOR GUIDANCE AND MAKE CORRECTIONS IN ACCORDANCE WITH DIRECTIONS GIVEN. IT IS IMPORTANT TO NOTE THAT FABRICATION CANNOT BEGIN UNTIL COORDINATION DRAWINGS HAVE BEEN APPROVED. ANY MATERIAL, EQUIPMENT, SYSTEMS, ETC., PROCUREMENT OR INSTALLATION COMMENCED PRIOR TO APPROVAL IS TAKEN AT THE CONTRACTORS OWN RISK AND MAY HAVE TO BE MODIFIED, MOVED AND/OR RECONFIGURED AT THE CONTRACTORS COST.



(F6) PARTIAL FIRST FLOOR SYSTEMS PLAN — NORTH
SCALE: 1/4" = 1'-0" 0 2' 4' 8'

[illegible]

Department of Veterans Affairs
William Jennings Bryan Dorn
VA Medical Center
6439 Garners Ferry Road
Columbia, SC 29209



SEAL

Architect/Engineer Address



Design & Management Solutions for the Built Environment

8016 TOWER POINT DRIVE P 704.814.1321
CHARLOTTE, NC 28227 F 704.321.0831

WWW.HSHPC.COM

COPYRIGHT © 2011 HARRELL SALTTRICK & HOPPER, PC
HSH PROJECT # 11015

Recommended Approvals:	
1. MEDICAL DIRECTOR	6. OPERATIONS SERVICE LINE MANAGER
2. ASSOCIATE DIRECTOR	7. INFECTION CONTROL MANAGER
3. CHIEF OF STAFF	8. SAFETY MANAGER
4. ASSOC. DIRECTOR	9. GENERAL ENGINEER
5. SERVICE LINE MGRS.	10. COTR

	Drawing Title
	PARTIAL FIRST FLOOR
	SYSTEMS PLAN
	NORTH

* BUILDING IS FULLY
SPRINKLERED *

Project Title	REPLACE BOILER PLANT/ COGEN/CHP
---------------	------------------------------------

Drawn

☐ Building

AutoCAD File Name

	ABROAD THE RAIN
--	-----------------

Date: 11/11/2014

APRIL 30, 2012
Project Number 544-11-101

DRAWING No.

DRAWING NO.
EY102

