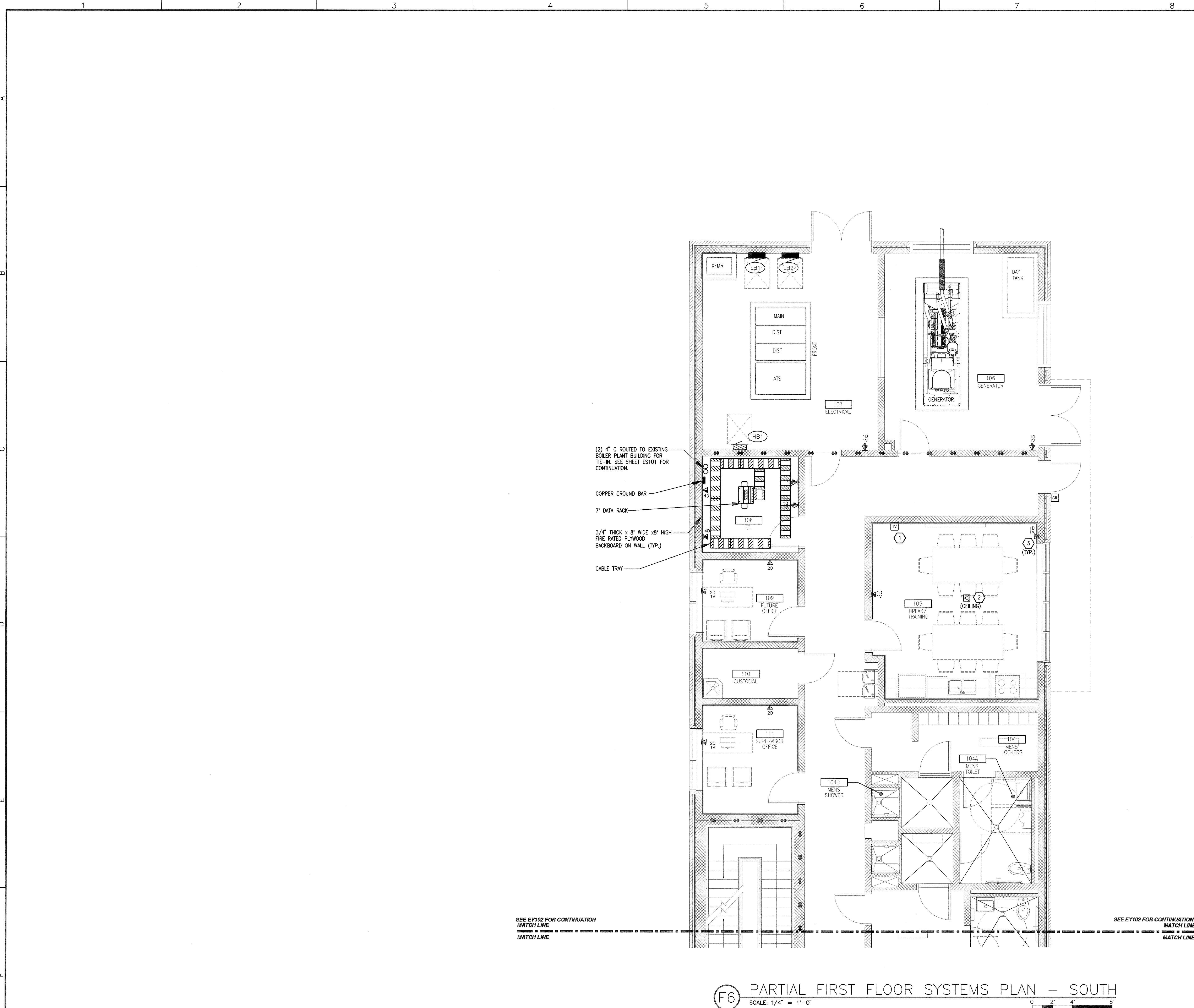


three inches = one foot  
one and one half inches = one foot  
one inch = one foot  
three quarters inch = one foot  
one half inch = one foot  
three eighths inch = one foot  
one quarter inch = one foot  
one eighth inch = one foot



(F6) PARTIAL FIRST FLOOR SYSTEMS PLAN - SOUTH  
SCALE: 1/4" = 1'-0"

### GENERAL NOTES

A. REFER TO DRAWING E001 FOR TYPICAL SYMBOLS AND ABBREVIATIONS USED IN THIS DRAWING.

### DRAWING KEYNOTES

- SEE DETAIL F1/ES02.
- LOCATE DATA OUTLET FLUSH IN CEILING NEXT TO RECEPTACLE. COORDINATE LOCATION AT CEILING MOUNTED PROJECTOR. REFER TO ARCHITECTURAL REFLECTED CEILING PLAN SHEET AE108. COVER PLATE TO BE WHITE.
- COORDINATE LOCATION OF TELEPHONE/DATA OUTLET WITH RECEPTACLE LOCATIONS. SEE POWER PLANS.

### WALL TYPES LEGEND

- (2) HOUR FIRE BARRIER
- CMU, SEE ARCHITECTURAL PLANS FOR SIZES

### COORDINATION DRAWINGS

THE MECHANICAL CONTRACTOR SHALL TAKE THE LEAD IN PREPARATION OF COORDINATION DRAWINGS. SUCH DRAWINGS SHALL BE ARRANGED AND DESIGNED THROUGH AND FROM COORDINATION WITH ALL OTHER MAJOR AND MINOR SUBCONTRACTORS AND THE GENERAL CONTRACTOR. PROVIDE PLAN VIEWS, SECTIONS AND ELEVATIONS AS REQUIRED TO FULLY COORDINATE ALL NEW WORK WITH ITSELF AND EXISTING CONDITIONS. DRAW TO SCALE (AT NOT LESS THAN 3/8" = 1'-0"). DRAWINGS SHALL SHOW, BUT NOT BE LIMITED TO: ALL WALL RATINGS; ALL DUCTWORK; ALL AIR DISTRIBUTION; MECHANICAL EQUIPMENT; MECHANICAL PIPING; FIRE PROTECTION PIPING; ALL PLUMBING PIPING; CABLE TRAYS (WITH ELEVATIONS NOTED); LIGHTING FIXTURES (WHEN CEILING MOUNTED); CEILING GRID AND CEILING HEIGHT; MAJOR BEAMS AND JOISTS (WITH ELEVATIONS MARKED); FIRE ALARM DEVICES AND SPEAKERS (WHERE CEILING MOUNTED); ELECTRICAL CONDUITS LARGER THAN 2-INCH DIAMETER; ELECTRICAL BUSWAY AND REQUIRED CLEARANCES; EQUIPMENT PROVIDED BY OTHERS THAT PROTRUDE INTO CEILING CAVITIES OR IMPED THE LOCATION OR ACCESS TO ABOVE CEILING PIPING, DUCTWORK OF OTHER EQUIPMENT. SECTIONS SHALL BE CUT THROUGH AREAS SHOWING MATERIALS AND SYSTEMS OF ALL CONTRACTS. IF THERE ARE ANY OUTSTANDING ISSUES THAT CANNOT BE RESOLVED, CONSULT WITH THE ARCHITECT AND/OR ENGINEER (THROUGH THE VA COTR) FOR GUIDANCE AND MAKE CORRECTIONS IN ACCORDANCE WITH DIRECTIONS GIVEN. IT IS IMPORTANT TO NOTE THAT FABRICATION CANNOT BEGIN UNTIL COORDINATION DRAWINGS HAVE BEEN APPROVED. ANY MATERIAL, EQUIPMENT, SYSTEMS, ETC., PROCUREMENT OR INSTALLATION COMMENCED PRIOR TO APPROVAL IS TAKEN AT THE CONTRACTORS OWN RISK AND MAY HAVE TO BE MODIFIED, MOVED AND/OR RECONFIGURED AT THE CONTRACTORS COST.

## 100% CONSTRUCTION DOCUMENTS

<table><thead><tr><th>REVISION NO.</th><th>REVISION DESCRIPTION</th><th>By</th><th>Date</th></tr></thead><tbody><tr><td> </td><td> </td><td> </td><td> </td></tr><tr><td> </td><td> </td><td> </td><td> </td></tr><tr><td> </td><td> </td><td> </td><td> </td></tr></tbody></table>	REVISION NO.	REVISION DESCRIPTION	By	Date													 <b>Department of Veterans Affairs</b> <b>William Jennings Bryan Dorn</b> <b>VA Medical Center</b> <b>6439 Garners Ferry Road</b> <b>Columbia, SC 29209</b>	 <b>John G. Hopper</b> Professional Engineer No. 6390 State of South Carolina 4-30-12 SEAL	<b>Harrell, Saltrick &amp; Hopper</b> Design & Management Solutions for the Built Environment 2016 TOWER POINT DRIVE CHARLOTTE, NC 28227 P 704.814.1320 F 704.321.0833 WWW.HSHPC.COM COPYRIGHT © 2011 HARRELL, SALTRICK & HOPPER, PC HSH PROJECT # 11015	Recommended Approvals:		Drawing Title <b>PARTIAL FIRST FLOOR SYSTEMS PLAN SOUTH</b>  *BUILDING IS FULLY SPRINKLERED*	Project Title <b>REPLACE BOILER PLANT/ COGEN/CHP</b>	Date <b>APRIL 30, 2012</b>	Project Number <b>544-11-101</b>	DRAWING No. <b>EY103</b>	
	REVISION NO.	REVISION DESCRIPTION	By	Date																							
1. MEDICAL DIRECTOR		6. OPERATIONS SERVICE LINE MANAGER																									
2. ASSOCIATE DIRECTOR		7. INFECTION CONTROL MANAGER																									
3. CHIEF OF STAFF		8. SAFETY MANAGER																									
4. ASSOC. DIRECTOR		9. GENERAL ENGINEER		Drawn	Building Number <b>21</b>	AutoCAD File Name <b>CDC</b>	Checked	Reviewed	Const. Contract No.																		
5. SERVICE LINE MGRS.		10. COTR																									