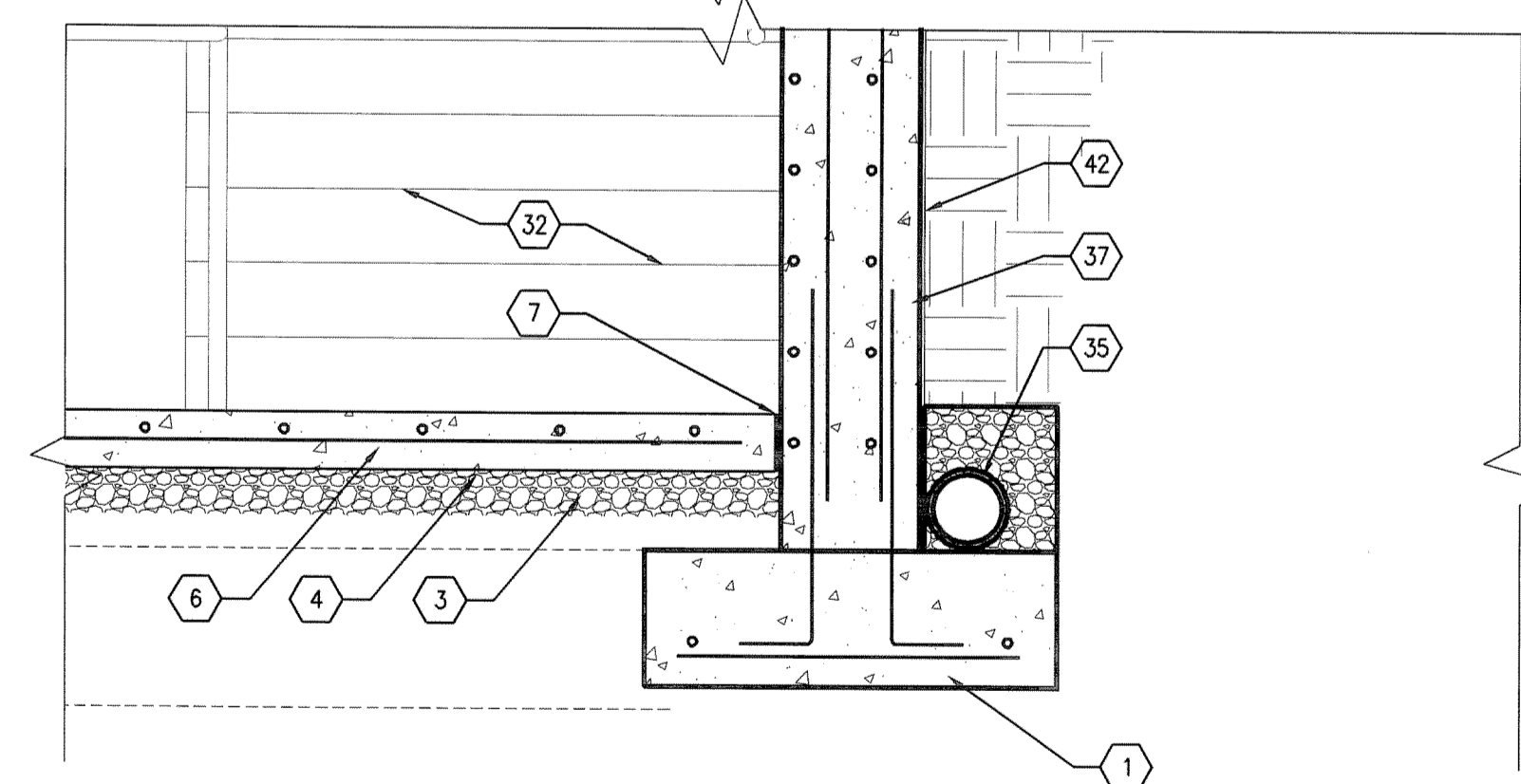
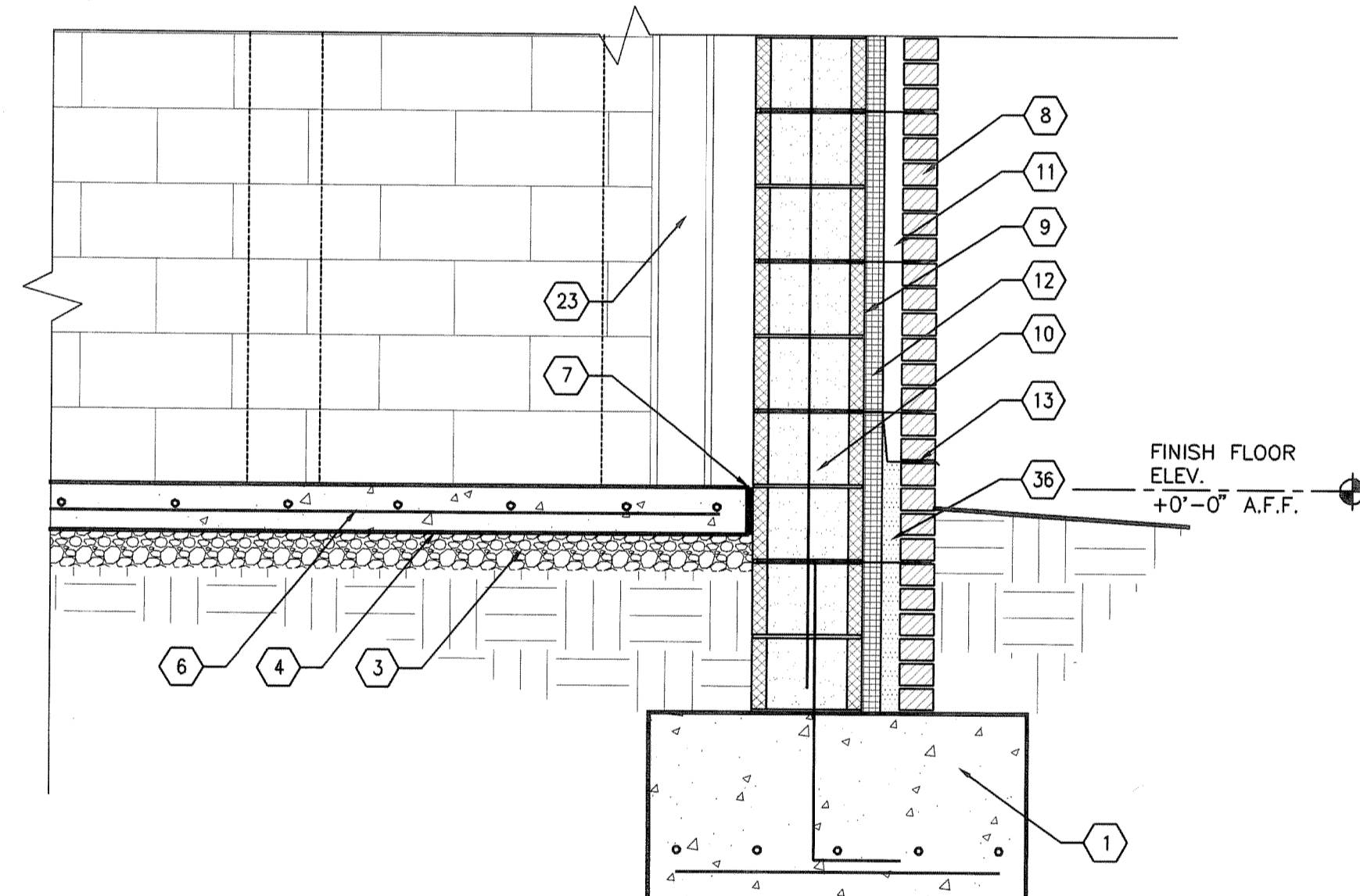


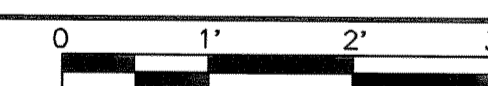
F2 WALL SECTION
3/4" = 1'-0"



F4 WALL SECTION
3/4" = 1'-0"



E6 WALL SECTION
3/4" = 1'-0"



GENERAL NOTES

1. SEE ALTERNATES : DEDUCT FROM THE BID ALL MATERIALS AND LABOR REQUIRED TO SUBSTITUTE BRICK VENEER FOR THE CAST STONE COURSE.

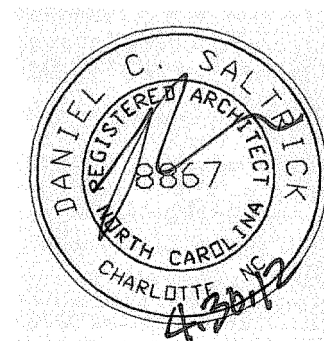
SHEET KEYNOTES

1. FOOTING, SEE STRUCTURAL DRAWINGS
2. TURNED DOWN SLAB, SEE STRUCTURAL DRAWINGS
3. 4" THICK COMPACTED GRAVEL FILL
4. VAPOR BARRIER
5. EXISTING BASEMENT
6. CONCRETE SLAB ON GRADE, SEE STRUCTURAL DRAWINGS
7. $\frac{1}{2}$ " PREFORMED COMPRESSIBLE JOINT FILLER
8. BRICK VENEER
9. VAPOR BARRIER
10. CMU -- GROUT CELLS WHERE REQUIRED
11. 2" AIR SPACE
12. 2" RIGID INSULATION
13. THRU-WALL FLASHING, PROVIDE WEEP HOLES MIN 24" OC. HORIZ.
14. CAST STONE COURSE -- REFERENCE GENERAL NOTE NOTE 1.
15. CAST STONE COPING
16. OVERHEAD COILING DOOR
17. OVERHEAD COILING DOOR HOUSING
18. ALUMINUM STOREFRONT
19. LOUVER
20. METAL DECK & CONCRETE SLAB, SEE STRUCTURAL DRAWINGS
21. RIGID ROOF INSULATION
22. CANT STRIP
23. STEEL FRAMING, SEE STRUCTURAL DRAWINGS
24. BUILT-UP ROOFING SYSTEM
25. ROOF EXPANSION JOINT
26. MECHANICAL EQUIPMENT, SEE MECHANICAL DRAWINGS
27. MEZZANINE METAL DECK & CONCRETE SLAB, SEE STRUCTURAL DRAWINGS
28. STEEL RAILING
29. SUSPENDED ACOUSTIC TILE CEILING
30. SUSPENDED M.R. GYPSUM BOARD CEILING
31. CONCRETE EQUIPMENT PAD, SEE STRUCTURAL DRAWINGS
32. STEEL STAIRS BEYOND
33. CMU PARTITION
34. TRENCH DRAIN
35. PERFORATED FOUNDATION DRAINAGE PIPE--COORDINATE WITH CIVIL
36. GROUT SOLID
37. CONCRETE FOUNDATION WALL, SEE STRUCTURAL DRAWINGS
38. RUBBER BASE
39. PREFINISHED ALUMINUM PARAPET LINER
40. VERTICAL REINFORCING -- SEE STRUCTURAL
41. HORIZONTAL REINFORCING @ 10" O.C. VERT. -- SEE STRUCTURAL DRAWINGS
42. BUILT-UP BITUMINOUS WATERPROOFING AND PROTECTIVE COVERING

<i>REVISION NO.</i>	<i>REVISION DESCRIPTION</i>	
Revisions		By Date



Department of Veterans Affairs
William Jennings Bryan Dorn
VA Medical Center
6439 Garners Ferry Road
Columbia, SC 29209



SEAL

Architect/Engineer Address

**Harrell,
Saltrick &
Hopper**

Des
801
CHA

Design & Management Solutions for the Built Environment

8016 TOWER POINT DRIVE
CHARLOTTE, NC 28227

P 704.814.1320
F 704.321.0833

WWW.HSHPC.COM

COPYRIGHT © 2011 HARRELL, SALTRICK & HOPPER, PC
USU PROJECT # 11015

Recommended Approvals:	
1. MEDICAL DIRECTOR	6. OPERATIONS SERVICE LINE MANAGER
2. ASSOCIATE DIRECTOR	7. INFECTION CONTROL MANAGER
3. CHIEF OF STAFF	8. SAFETY MANAGER
4. ASSOC. DIRECTOR	9. GENERAL ENGINEER
5. SERVICE LINE MGRS.	10. COTR

Drawing Title	WALL SECTIONS
---------------	---------------

* BUILDING IS FULLY
SPRINKLERED *

Project Title	REPLACE BOILER PLANT/ COGEN/CHP
---------------	------------------------------------

	Drawn
	RLS

Building Number	21
-----------------	----

AutoCAD File Name	
-------------------	--

Date
APRIL 30, 2012

Project Number	544-11-101
----------------	------------

DRAWING No. **A 7004**



Veterans
Affairs

100% CONSTRUCTION DOCUMENTS