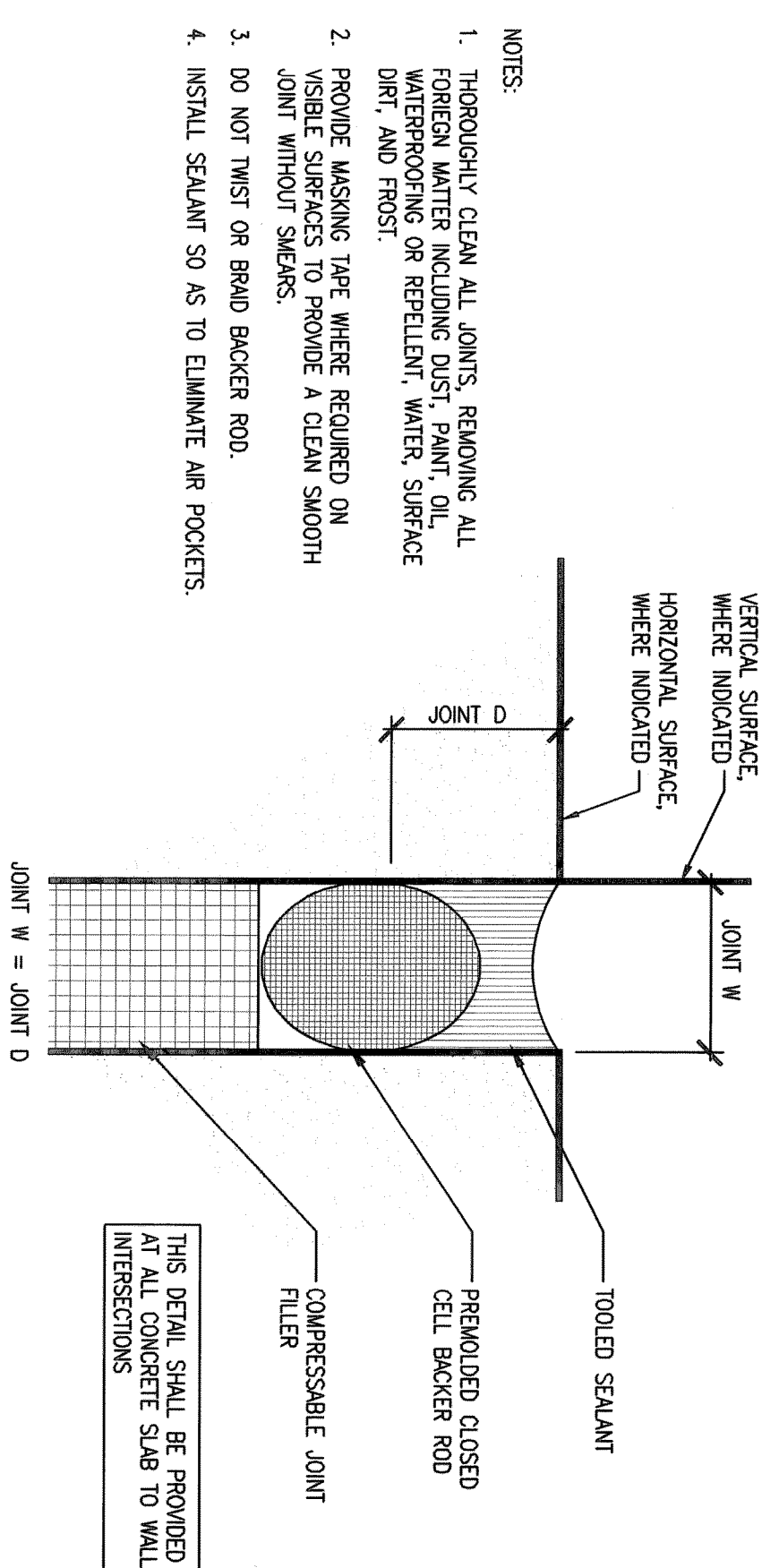
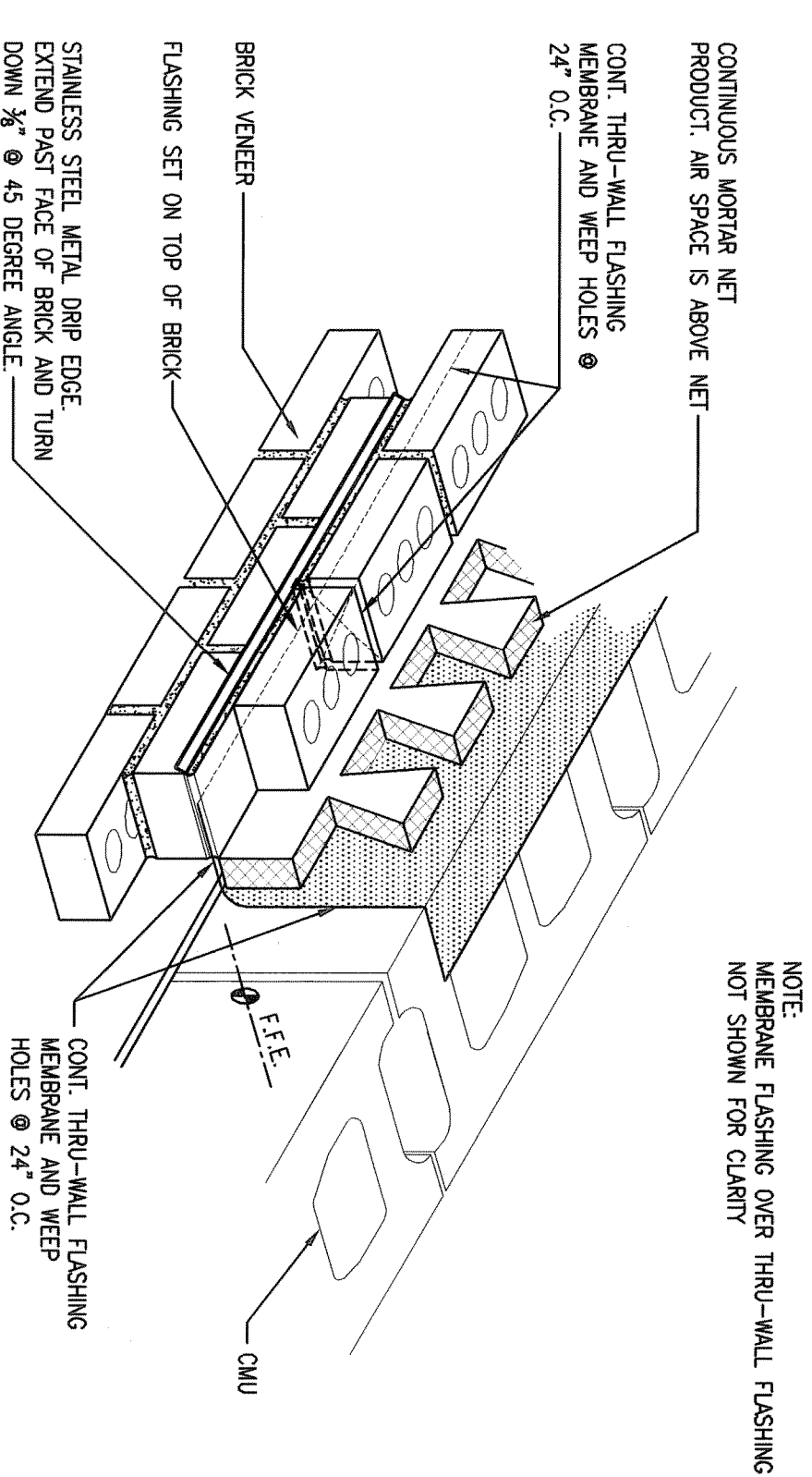


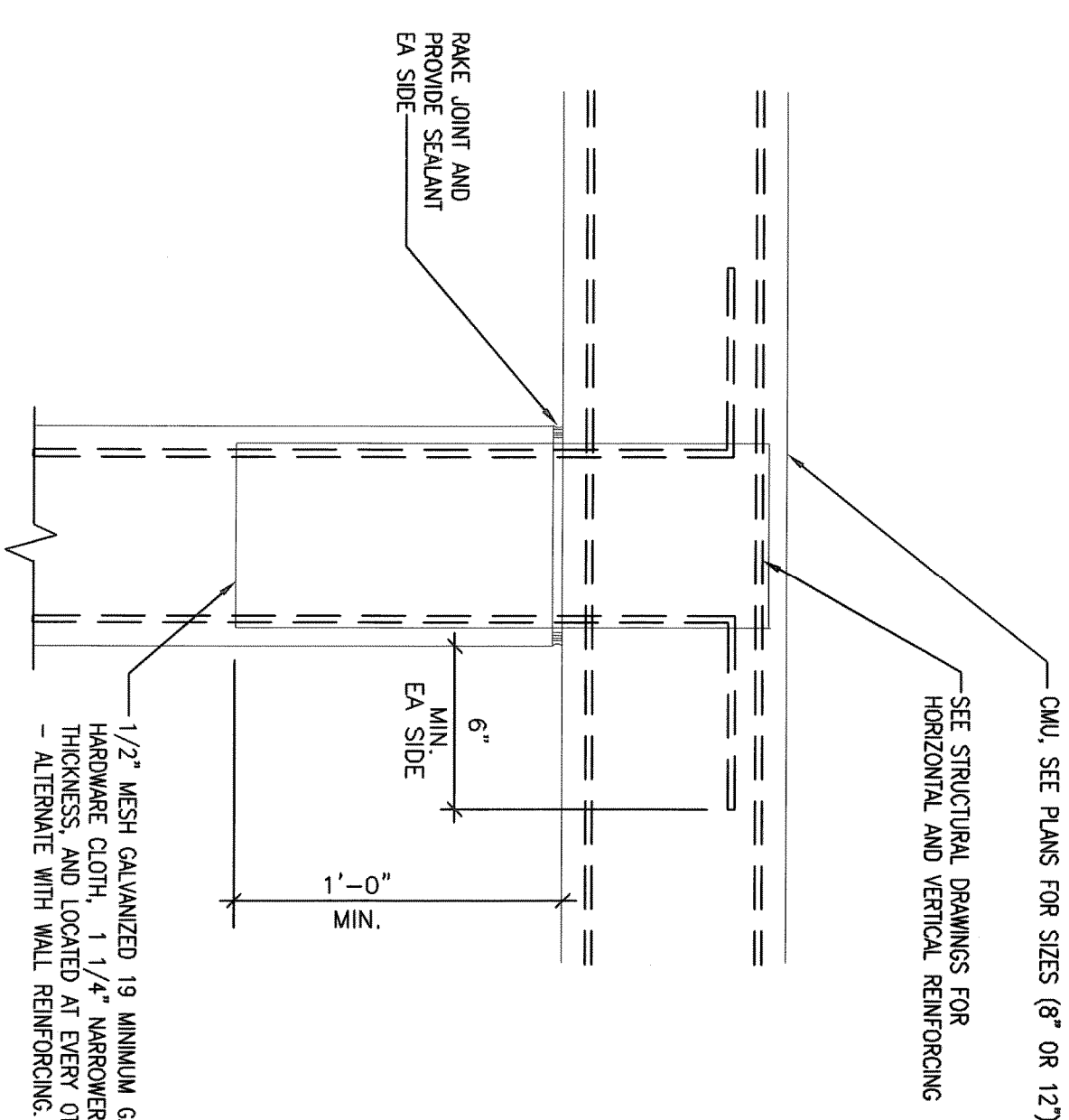
THRU WALL FLASHING DRIP EDGE DETAIL



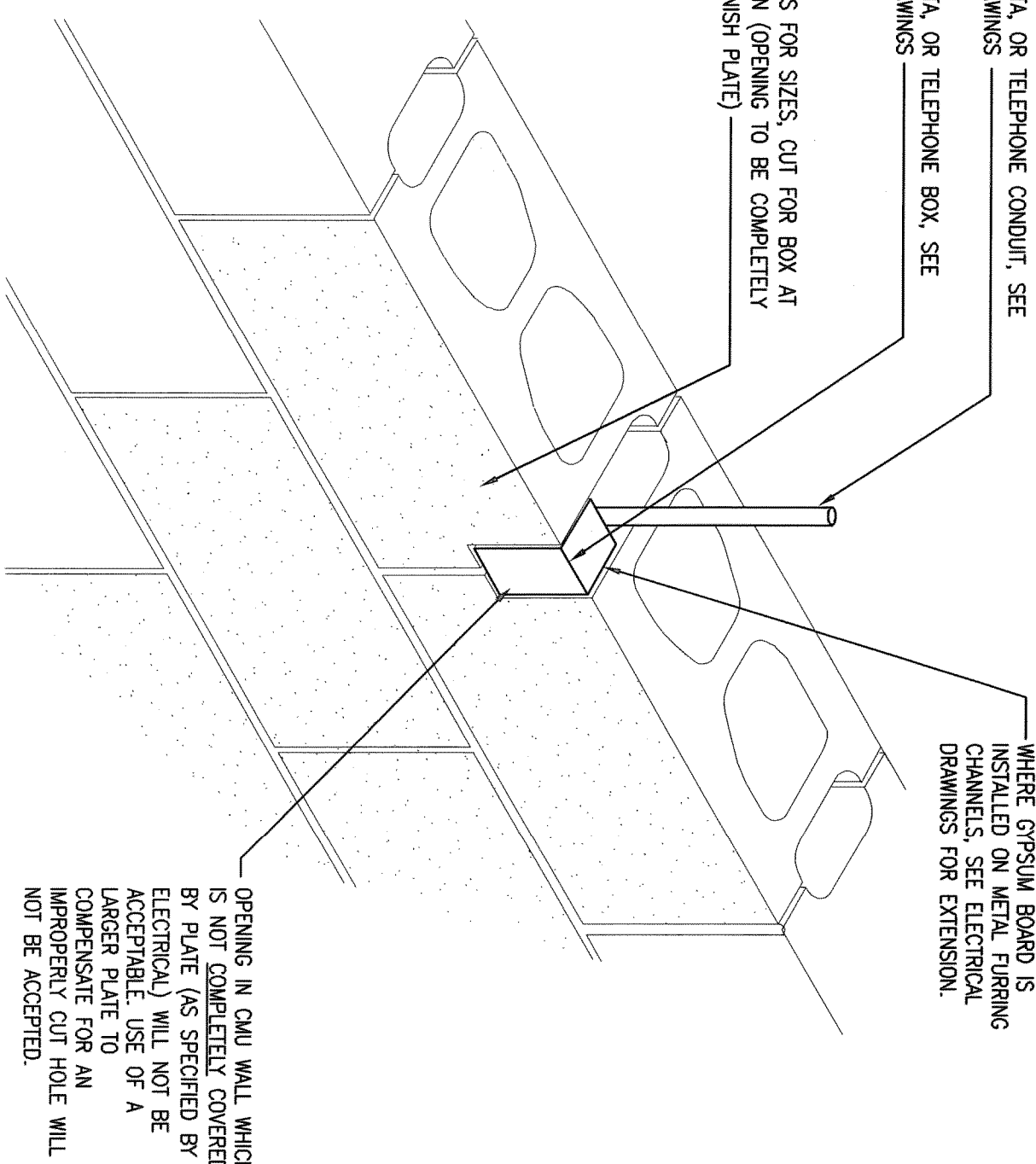
**D4** TYPICAL CONTROL JOINT DETAIL  
SCALE: NOT TO SCALE



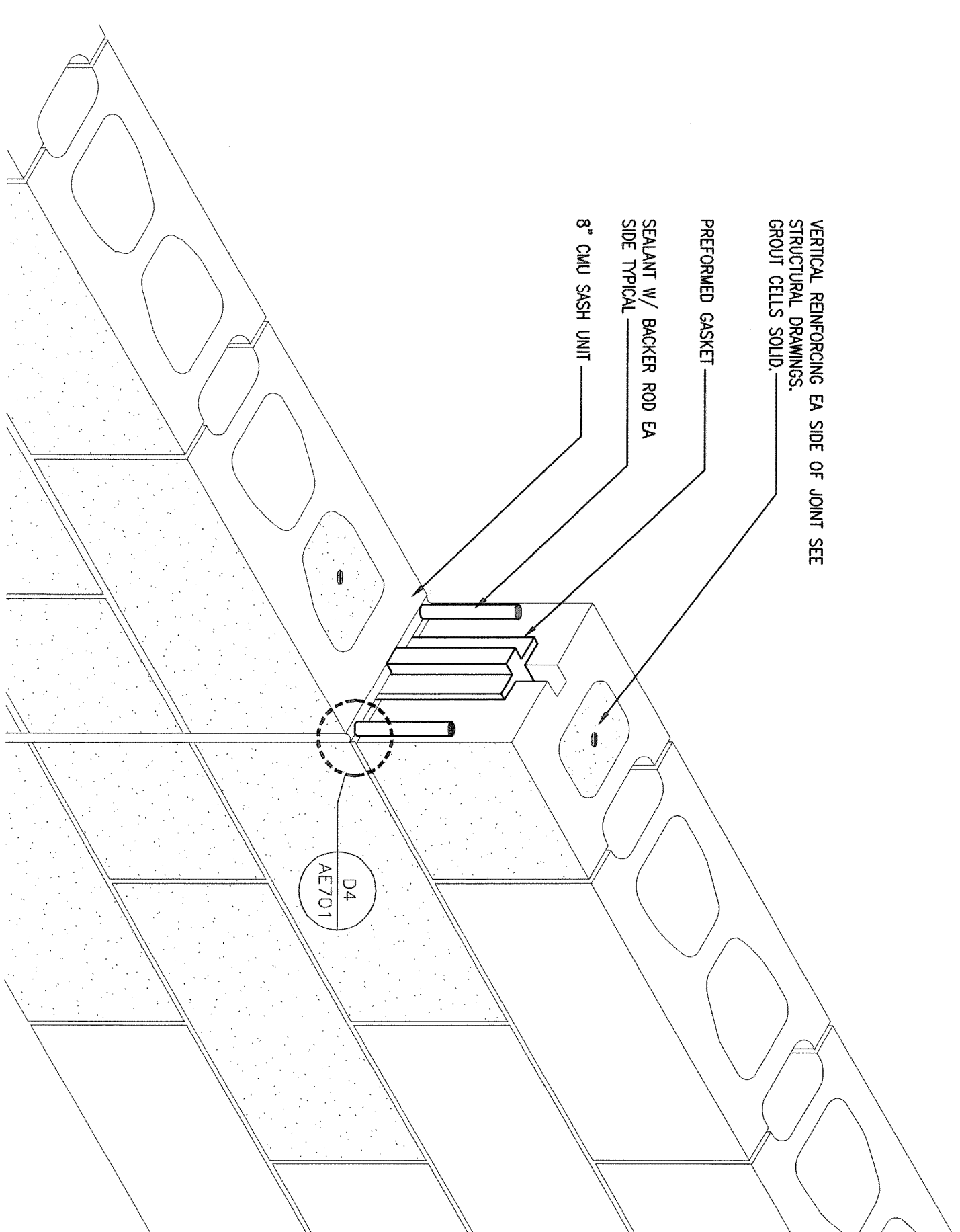
**TYPICAL BRICK VENEER  
BASE OF WALL FLASHING DETAIL**



**F-1** TYPICAL CMU INTERSECTION DETAIL  
SCALE: NOT TO SCALE



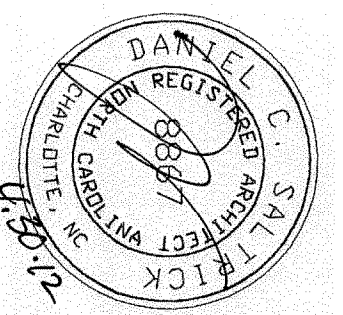
F4 TYPICAL CMU ELECT. BOX CUT OUT DETAIL  
SCALE: NOT TO SCALE



**F7** TYPICAL CMU CONTROL JOINT DETAIL  
SCALE: NOT TO SCALE

[illegible]

Department of Veterans Affairs  
William Jennings Bryan Dorn  
VA Medical Center  
6439 Garners Ferry Road  
Columbia, SC 29209



SEAL

Architect/Engineer Address

Harrell,  
Saltick &  
Hopper

**Design & Management Solutions for the Built Environment**  
 106 TOWER POINT DRIVE  
 HARRLOTTE, NC 28227  
 P 704.814.1411  
 F 704.321.0100  
 WWW.HSHPC.COM  
 COPYRIGHT © 2011 HARBELL, SALTBROCK & HOPPER, PC  
 HSH PROJECT # 11015

Recommended Approvals:	
1. MEDICAL DIRECTOR	6. OPERATIONS SERVICE LINE MANAGER
2. ASSOCIATE DIRECTOR	7. INFECTION CONTROL MANAGER
3. CHIEF OF STAFF	8. SAFETY MANAGER
4. ASSOC. DIRECTOR	9. GENERAL ENGINEER
5. SERVICE LINE MGRS.	10. COTR

Drawing Title MISCELLANEOUS DETAILS	Project Title REPLACE BOILER PLANT/ COGEN/CHP			
★ BUILDING IS FULLY SPRINKLERED ★	Drawn R.S. M/F	Building Number 21	AutoCAD File Name	
	Checked	Reviewed	Const. Control No.	

Project Number  
544-11-101

DRAWING No.  
AE701

