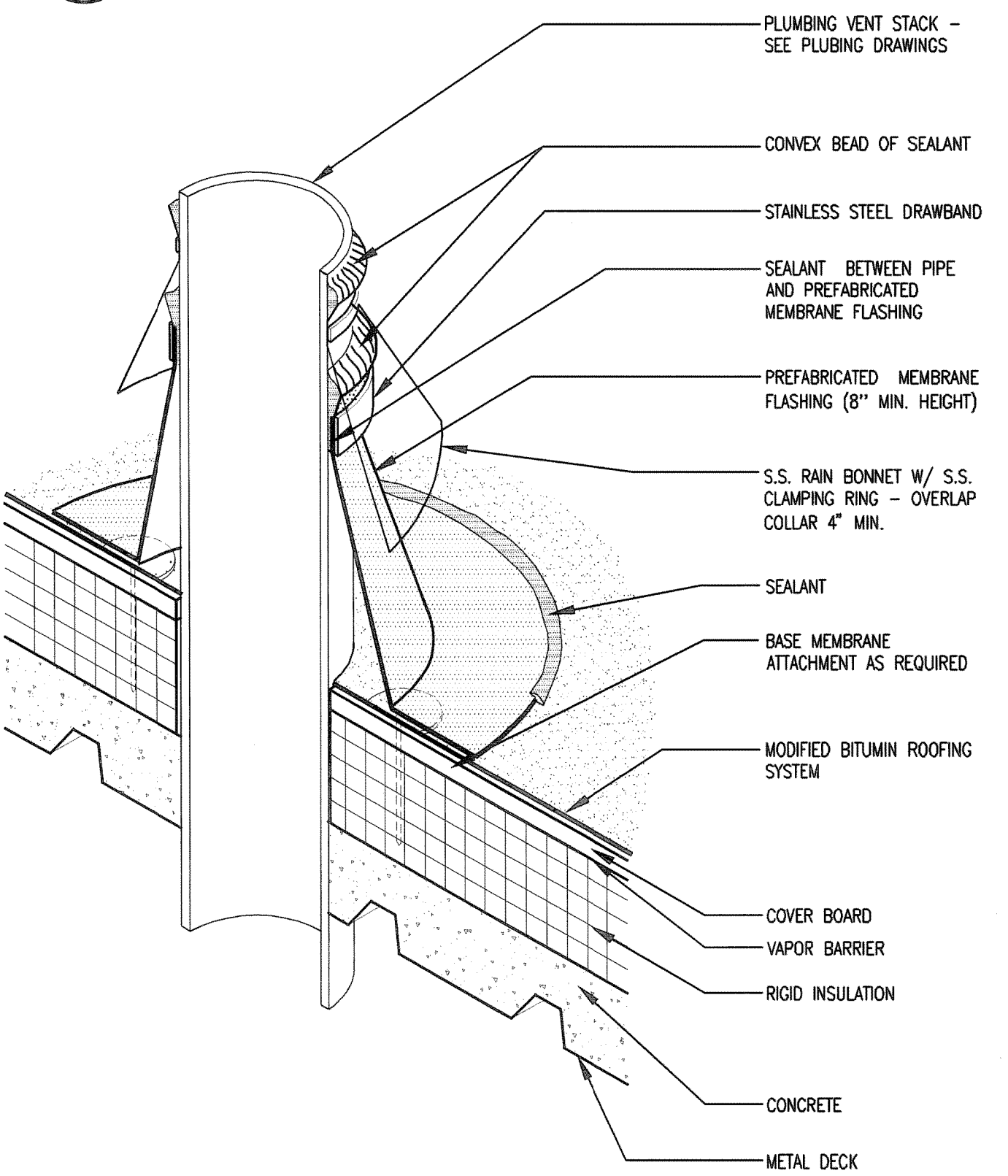


PLAN
(PARAPET PLATFORM & RETURN
LOOPS ARE OMITTED FOR CLARITY)



Technical drawing of a metal roof curb assembly. The drawing shows a cross-section of the curb with various components labeled:

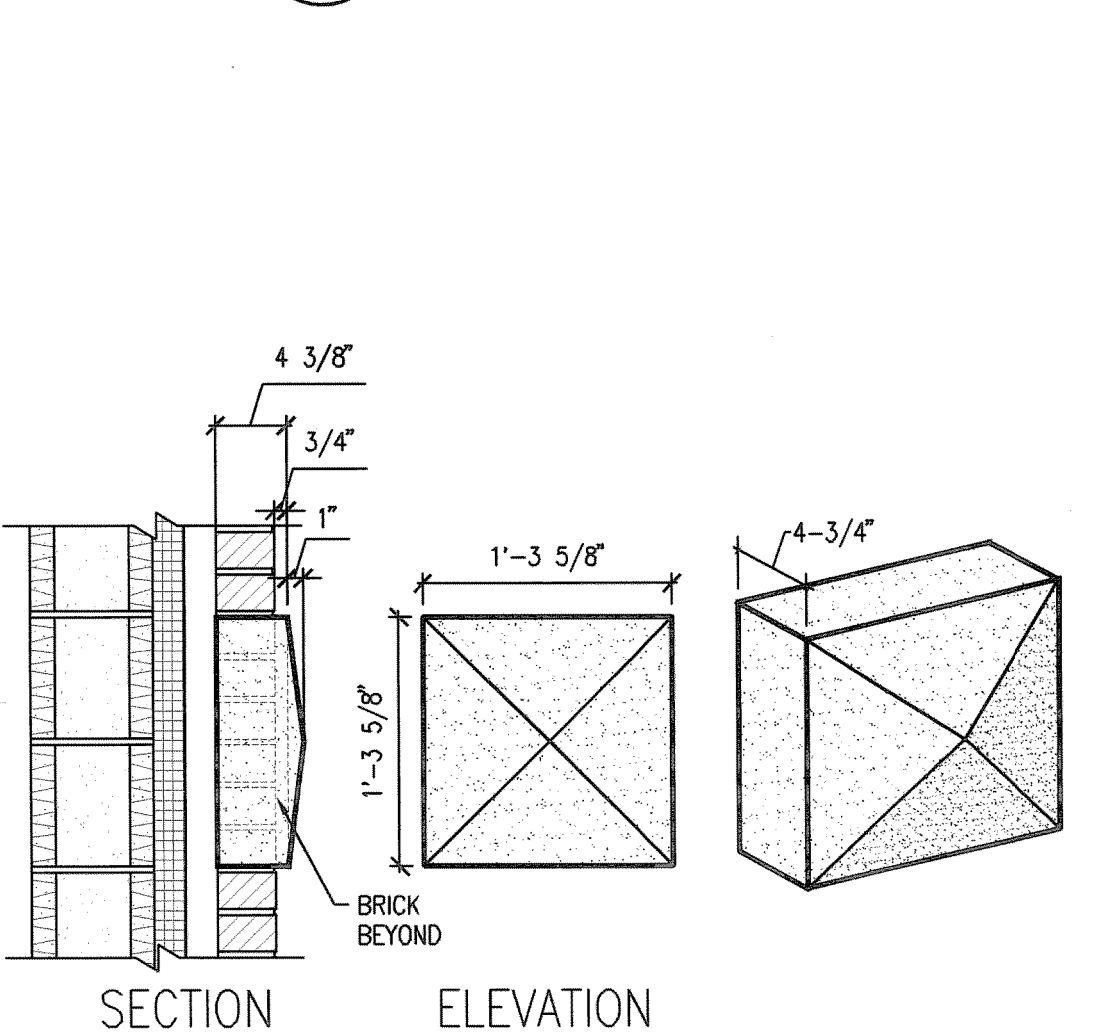
- OVERLAP SPICED CONNECTIONS "4" MINIMUM**: Points to the joint between two sections of the curb.
- CONT. 18 GA. GALVANIZED METAL CLEAT OR AS OTHERWISE SPECIFIED**: Points to the vertical support member.
- 24 GA. GALVANIZED METAL FLASHING OR AS OTHERWISE**: Points to the base flashing.
- CONTINUOUS FLANT AT ALL FLASHING EDGES**: Points to the edge of the flashing.

Dimensions are indicated:

- 1 1/4"**: Dimension for the height of the curb.
- 1 1/2"**: Dimension for the width of the curb.

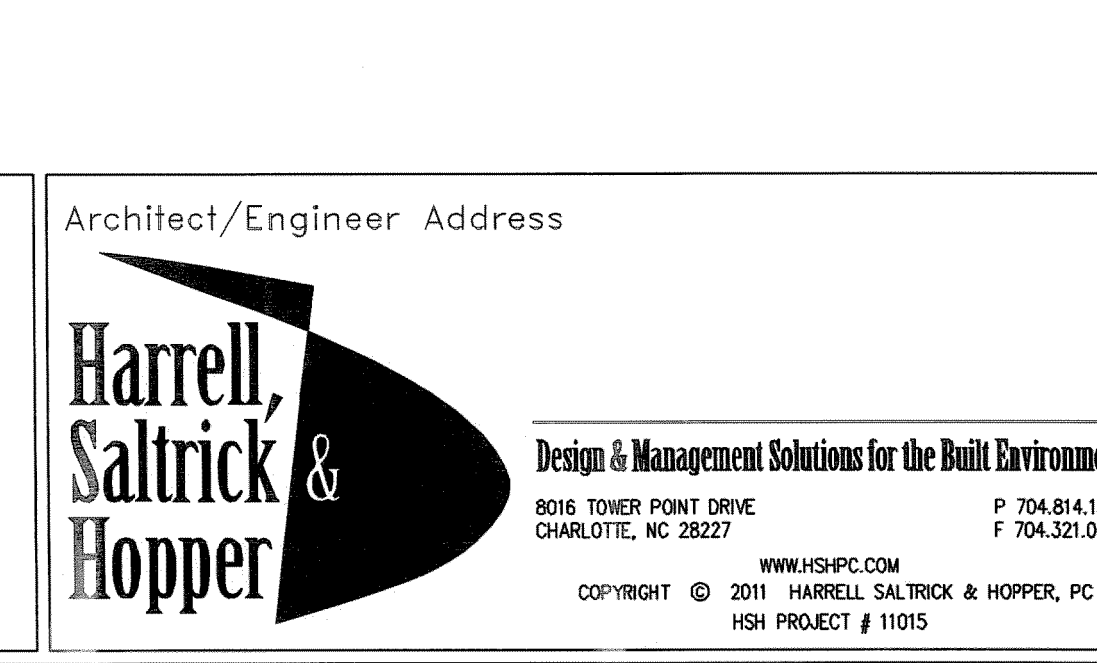


D5 PLUMBING VENT DETAIL
SCALE: NTS




F7 ROOF PENETRATION DETAILS
SCALE: NTS

F7 ROOF PENETRATION DETAILS
SCALE: NTS



Project Title	REPLACE BOILER PLANT/ COGEN/CHP
---------------	------------------------------------

Drawing Title ROOFING DETAILS
* BUILDING IS FULLY SPRINKLERED *

Date APRIL 30, 2012	
Project Number 544-11-101	
DRAWING No. AE702	

Veterans
Affairs