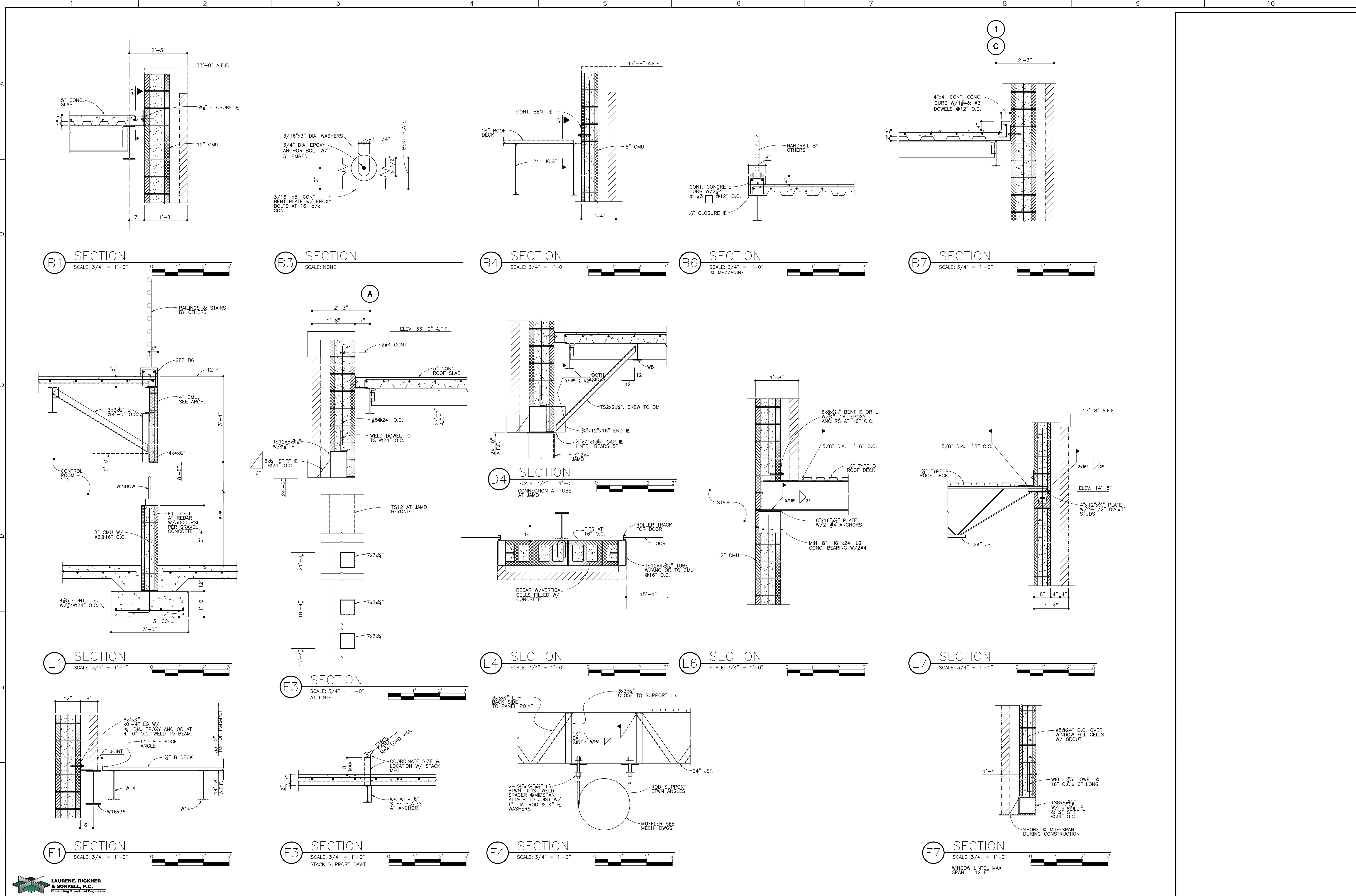


three inches = one foot
one and one half inches = one foot
one inch = one foot
three quarters inch = one foot
one half inch = one foot
one quarter inch = one foot
three eighths inch = one foot
one eighth inch = one foot



LAURENE, RICKHER & SORRELL, P.C.
Consulting Structural Engineers
8701 RED OAK BLVD., SUITE 500
CHARLOTTE, NORTH CAROLINA 28217
PHONE 704-522-0495 FAX 704-522-0499
EMAIL mail@lrspc.net WEB www.lrspc.net

LRS #11370

Department of Veterans Affairs
William Jennings Bryan Dorn
VA Medical Center
6439 Garners Ferry Road
Columbia, SC 29209

SEAL

Architect/Engineer Address

Harrell, Salttrick & Hopper

Design & Management Solutions for the Built Environment
8800 TOWER POINT DRIVE
CHARLOTTE, NC 28227
WWW.HSHPC.COM
P 704.321.0330 F 704.321.0333
COPYRIGHT © 2011 HARRELL, SALTTRICK & HOPPER, PC
HSH PROJECT # 11015

Recommended Approvals:

1. MEDICAL DIRECTOR	6. OPERATIONS SERVICE LINE MANAGER
2. ASSOCIATE DIRECTOR	7. INFECTION CONTROL MANAGER
3. CHIEF OF STAFF	8. SAFETY MANAGER
4. ASSOC. DIRECTOR	9. GENERAL ENGINEER
5. SERVICE LINE MGRS.	10. COTR

Drawing Title
FRAMING SECTIONS & DETAILS

★ BUILDING IS FULLY SPRINKLERED ★

Project Title
REPLACE BOILER PLANT/ COGEN/CHP

Drawn RJM	Building Number 21	AutoCAD File Name
Checked MEH	Reviewed	Const. Contract No.

Date
APRIL 30, 2012

Project Number
544-11-101

DRAWING No.
SS300

Veterans Affairs