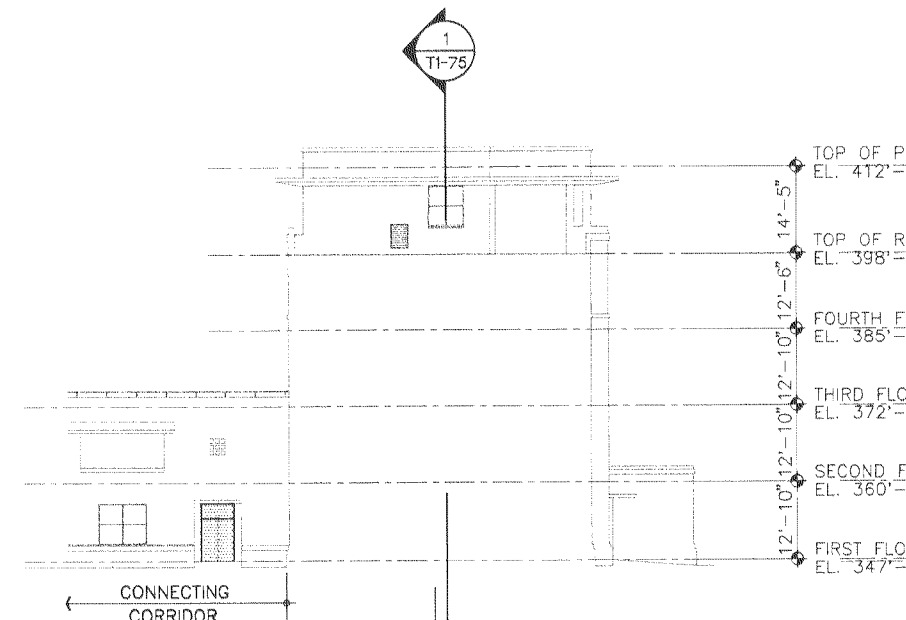


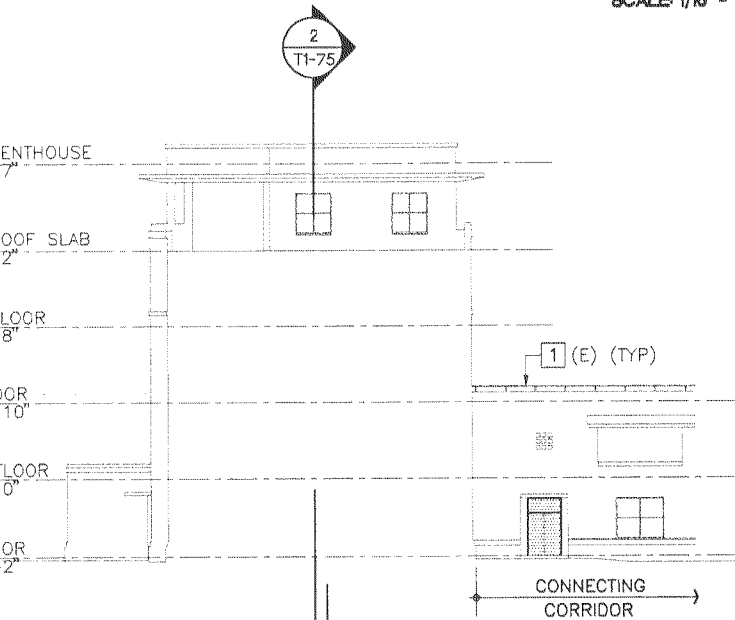
WEST ELEVATION

SCALE: 1/16" = 1'-0"



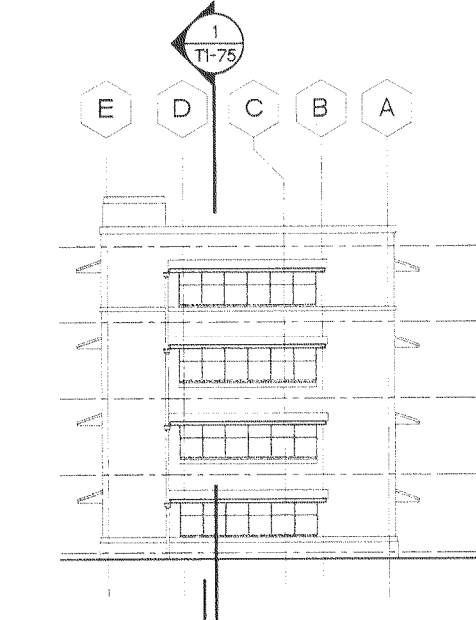
NORTH ELEVATION BEYOND

SCALE: 1/16" = 1'-0"



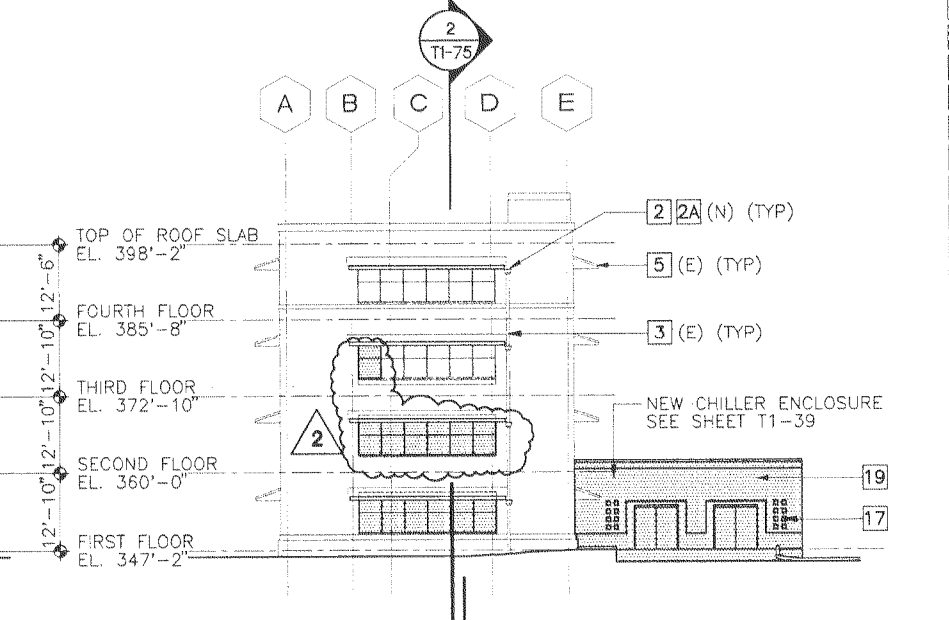
SOUTH ELEVATION BEYOND

SCALE: 1/16" = 1'-0"



NORTH ELEVATION

SCALE: 1/16" = 1'-0"



SOUTH ELEVATION

SCALE: 1/16" = 1'-0"

ELEVATION KEYNOTES

- 1 METAL PIPE RAILING
- 2 SHT. METAL LEADER PIPE
- 2A SHT. METAL GUTTER
- 3 SHT. METAL DOWNSPOUT
- 4 P.I.P. CONC. WALL
- 5 TILED CONC. OVERHANG
- 6 AREAWAY
- 7 CONC. TRIM
- 8 CERAMIC TILE VENEER, CLEAN & POLISH
- 9 AC GRILLE
- 10 ALUMINUM GUARDRAIL
- 11 LOUVER
- 12 ROLL-UP DOOR
- 13 CONC. WATERTABLE
- 14 ALUM. WINDOW
- 15 PIPE SPACE
- 16 SIESMIC JOINT
- 17 CMU BLOCK (8")
- 18 METAL DOOR
- 19 CMU WALL (12")
- 20 PRECAST CONC. SCUPPER
- 21 SKIM COAT PLASTER
- 22 METAL PANEL

NOTES:

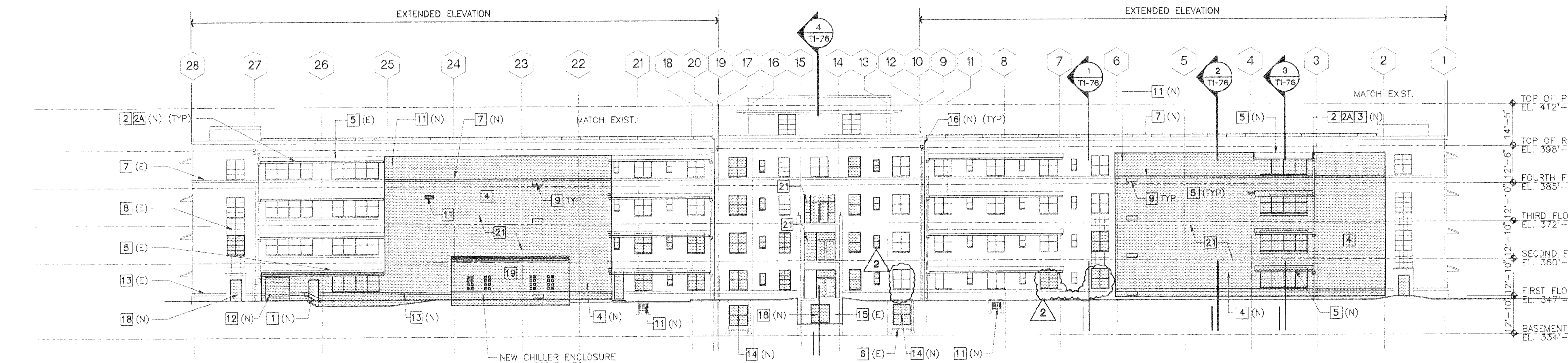
1. PATCH TO MATCH EXISTING CHIPPED, SPALLED, DETERIORATED, & OTHER DAMAGED SURFACES, & SURFACES DAMAGED DURING, & DUE TO DEMOLITION WORK.
2. PATCH TO MATCH VOIDS, DUE TO REMOVAL OF DEMOLITION ITEMS.
3. PAINT NEW SURFACES. REPAINT PAINTED EXISTING SURFACES.

LEGEND:

- NEW
- EXISTING

ABBREVIATIONS:

- (N) NEW
- (E) EXISTING



EAST ELEVATION

SCALE: 1/16" = 1'-0"

AMENDMENT DRAWING - AMENDS 8HT. T1-73

AMENDMENT NO. 2	4/18/97
Revisions	Date

BID SET DOCUMENTS

ARCHITECTS HAWAII LIMITED
 1001 Bishop Street, Pacific 300
 Honolulu, Hawaii 96813
 Telephone: (808) 523-9636
 FAX: (808) 521-3280

This work was prepared by me or under my supervision and construction of this project will be under my supervision.
[Signature]
 NOTE: Contractor to check and verify all dimensions at job before proceeding with work.



Drawing Title: **EXTERIOR ELEVATIONS**
 Approved: Area Project Manager
[Signature]

Project Title: **AMBULATORY CARE CLINIC AND RENOVATE E-WING PHASE II, E-WING RENOVATION**
 Building Number: T1
 Location: YAMROC, HONOLULU, HAWAII

Date: **MARCH 20, 1997**
 Project No.: 459-002B
 Drawing No.: **T1-73R2**
 Dwg. 125 of 342

