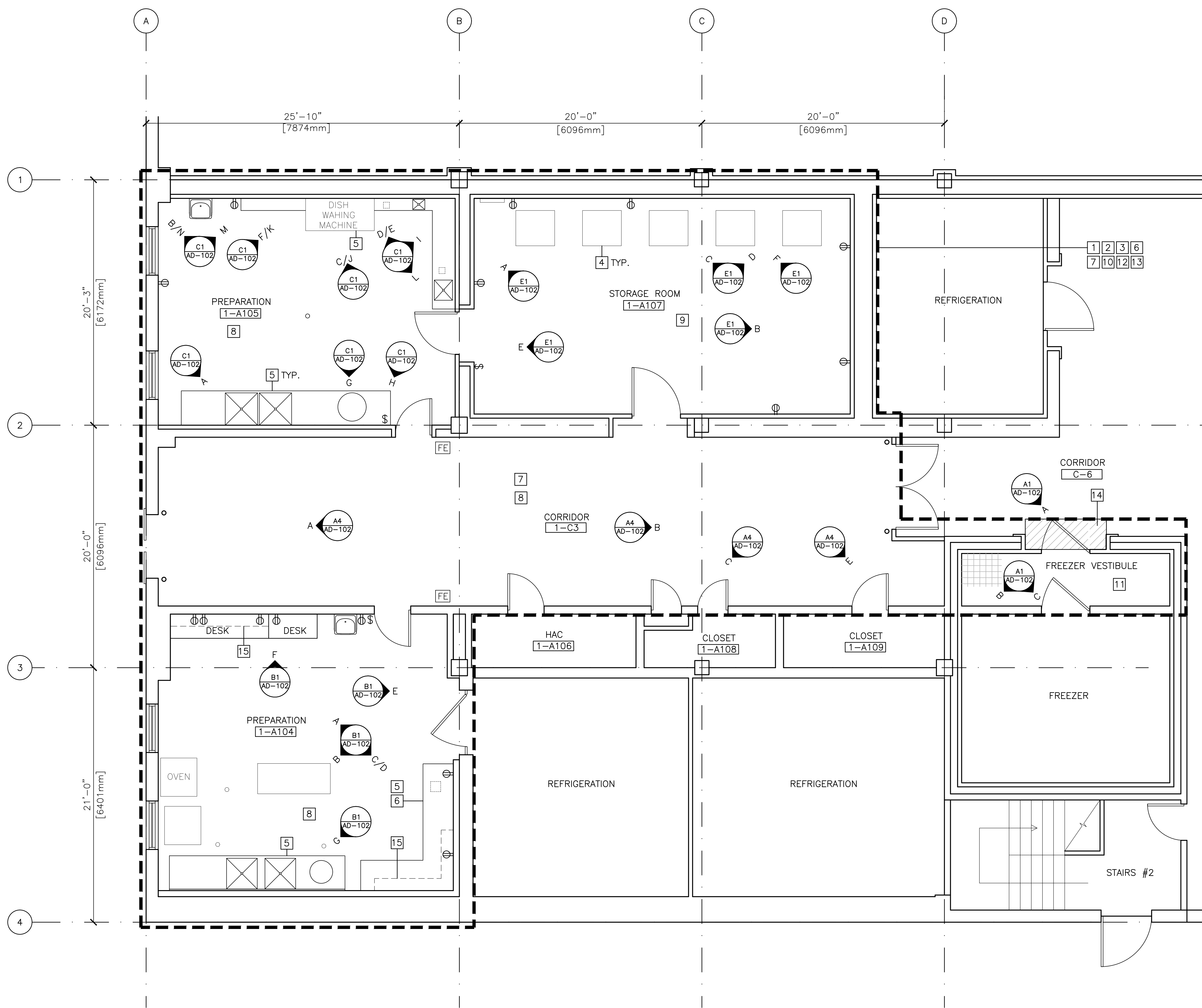
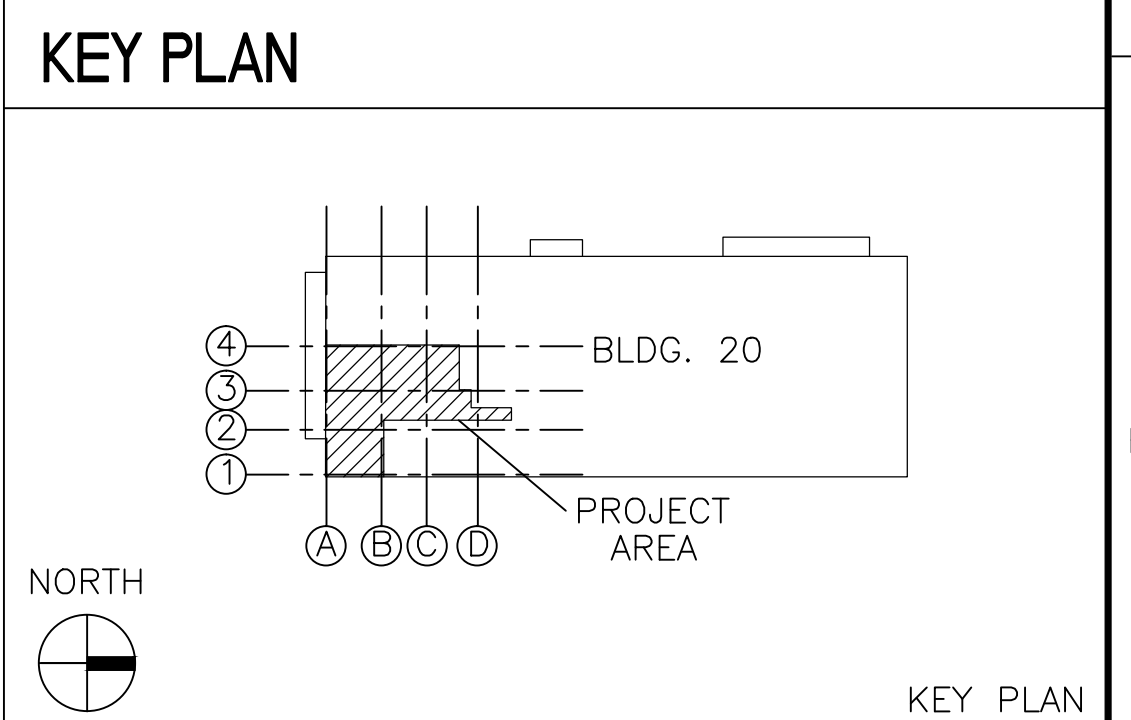


three inches = one foot  
one and one half inches = one foot  
one inch = one foot  
three quarters inch = one foot  
one half inch = one foot  
three eighths inch = one foot  
one quarter inch = one foot  
one eighth inch = one foot



- ### DEMOLITION KEY NOTES
- PERIMETER PROJECT AREA.
  - INFECTION CONTROL: (SEE GI-002)
    - INSTALL AND MAINTAIN INFECTION CONTROL BARRIERS FOR THE DURATION OF THE PROJECT
    - INSTALL DOORS FOR EGRESS THROUGH THE PLASTIC BARRIERS
    - UTILIZE HEPA FILTRATION VACUUM FOR THE DURATION OF CONSTRUCTION
    - PROVIDE STICKY FOOT PADS TO PREVENT MIGRATION OF CONSTRUCTION DUST
  - PROTECT IN PLACE ALL FLOOR SINKS, CLEANOUTS, FLOOR DRAINS ETC.
  - REMOVE AND STORE BY UNBOLTING FOOD WARMER BASE STATION AND PODS BY BURLODGE.
  - REMOVE AND STORE PREPARATION TABLES, COMPARTMENTALIZED SINK TABLES, PORTABLE OVENS, DESKS AND OTHER EQUIPMENT IN THE WAY OF NEW EPOXY FLOORING. STORE IN LOCATION PROVIDED VA RESIDENT ENGINEER.
  - REMOVE AND STORE ALL PLUMBING, ELECTRICAL CONNECTIONS FOR THE EQUIPMENT FOR USE DURING REINSTALLATION.
  - PROTECT ADJOINING FLOOR SURFACES DURING REMOVAL OF EXISTING TILE AND EXISTING EPOXY FLOORING.
  - REMOVE EXISTING EPOXY FLOOR FINISH DOWN TO EXISTING CONCRETE SLAB. ABRASIVE BLAST OR MECHANICALLY ABRADE TO REMOVE LAITANCE, SURFACE CONTAMINANTS, CURING COMPOUNDS, SEALERS, ETC. BLASTING MUST BE PERFORMED SUFFICIENTLY CLOSE TO THE SURFACE TO OPEN UP SURFACE VOIDS, BUGHOLES, POCKETS AND OTHER SUBSURFACE IRREGULARITIES. USE DRY, OIL FREE AIR FOR BLASTING OPERATION PER ASTM-D4285. REMOVE DUST & BLASTING DEBRIS BY VACUUMING AND NOT BY BRUSHING OR BLOWING. COMPLY WITH EPOXY MANUFACTURER'S REQUIREMENTS FOR SURFACE PREPARATION.
  - REMOVE EXISTING TILE FLOORING AND MORTAR BED DOWN TO CONCRETE SLAB. PREPARE SLAB.
  - PERFORM ABATEMENT OF ALL HAZARDOUS MATERIAL PER HAZARDOUS MATERIAL REPORT, IF REQUIRED.
  - REMOVE CRACKED TILES AT VESTIBULE OF FREEZER FROM CORRIDOR 1-C6.
  - DURING REMOVAL OF EXISTING FLOORING PROVIDE DUST CONTROL, PROTECT ALL WALL MOUNTED ITEMS FROM DAMAGE, COVER WALLS, CEILINGS WITH 10 MIL PLASTIC TO AVOID DUST FROM PENETRATING THESE SURFACES. PREPARE TEMPORARY DUST PARTITIONS FOR PROJECT AREA FROM ADJOINING SPACES.
  - CAP SUPPLY AIR; PROVIDE NEGATIVE PRESSURE, TEMPORARY SEAL DOORS, AND FRAMES BY GASKETING ETC FOR DUST PROTECTION.
  - REMOVE CRACKED CONCRETE OUTSIDE FREEZER VESTIBULE PREPARE SURFACES FOR REPAIR.
  - EXISTING WALL CABINET TO BE PROTECTED IN PLACE.

- ### PLAN LEGEND
- EXISTING ELECTRICAL OUTLETS
  - EXISTING FLOOR SINK
  - EXISTING WALL MOUNTED FIRE EXTINGUISHER
  - EXISTING SINK WITH FOOT CONTROLS
  - EXISTING LIGHT SWITCH



<b>A2 DEMOLITION PLAN</b>		SCALE 1/4"=1'-0"		100% CONSTRUCTION DOCUMENT																																											
<table><tr><td>35 % SCHEMATIC DESIGN</td><td>02/28/2018</td></tr><tr><td>65 % DESIGN DEVELOPMENT SUBMITTAL</td><td>04/08/2018</td></tr><tr><td>100% CONSTRUCTION DOCUMENT</td><td>05/15/2018</td></tr></table>		35 % SCHEMATIC DESIGN	02/28/2018	65 % DESIGN DEVELOPMENT SUBMITTAL	04/08/2018	100% CONSTRUCTION DOCUMENT	05/15/2018	CONSULTANTS:		ARCHITECT/ENGINEERS:																																					
35 % SCHEMATIC DESIGN	02/28/2018																																														
65 % DESIGN DEVELOPMENT SUBMITTAL	04/08/2018																																														
100% CONSTRUCTION DOCUMENT	05/15/2018																																														
<table><tr><td>Revisions</td><td>Date</td></tr><tr><td> </td><td> </td></tr><tr><td> </td><td> </td></tr><tr><td> </td><td> </td></tr><tr><td> </td><td> </td></tr></table>		Revisions	Date									<table><tr><td></td><td><b>SRD ARCHITECTS INC</b> ARCHITECTURE INTERIORS PROJECT MANAGEMENT 3920 E. CORONADO STREET, SUITE 201 ANAHEIM CALIFORNIA 92807 1000 S. FREMONT AVE, UNIT 53, BLDG. A1, SUITE 1218 ALHAMBRA CALIFORNIA 91803 www.SRDarchitectsinc.com O: 714 688 0212 • 626 202 0546 • FAX: 714 688 0244</td></tr></table>			<b>SRD ARCHITECTS INC</b> ARCHITECTURE INTERIORS PROJECT MANAGEMENT 3920 E. CORONADO STREET, SUITE 201 ANAHEIM CALIFORNIA 92807 1000 S. FREMONT AVE, UNIT 53, BLDG. A1, SUITE 1218 ALHAMBRA CALIFORNIA 91803 www.SRDarchitectsinc.com O: 714 688 0212 • 626 202 0546 • FAX: 714 688 0244	<table><tr><td colspan="2">Drawing Title <b>DEMOLITION PLAN</b></td><td colspan="2">Project Title <b>REPLACE EPOXY FLOORING IN BUILDING 20</b></td><td colspan="2">Project Number <b>691A4-13-116SM</b></td></tr><tr><td colspan="2">Approved Project Director</td><td colspan="2">Location <b>16111 PLUMMER STREET SEPULVEDA, CA 91343</b></td><td colspan="2">Building Number <b>20</b></td></tr><tr><td colspan="2">Date <b>05/15/2013</b></td><td colspan="2">Checked <b>W.H.</b></td><td colspan="2">Drawn <b>M.K.</b></td></tr><tr><td colspan="2"> </td><td colspan="2"> </td><td colspan="2">Drawing Number <b>AD-101</b></td></tr><tr><td colspan="2"> </td><td colspan="2"> </td><td colspan="2">Dwg. 5 of 8</td></tr></table>		Drawing Title <b>DEMOLITION PLAN</b>		Project Title <b>REPLACE EPOXY FLOORING IN BUILDING 20</b>		Project Number <b>691A4-13-116SM</b>		Approved Project Director		Location <b>16111 PLUMMER STREET SEPULVEDA, CA 91343</b>		Building Number <b>20</b>		Date <b>05/15/2013</b>		Checked <b>W.H.</b>		Drawn <b>M.K.</b>						Drawing Number <b>AD-101</b>						Dwg. 5 of 8	
Revisions	Date																																														
	<b>SRD ARCHITECTS INC</b> ARCHITECTURE INTERIORS PROJECT MANAGEMENT 3920 E. CORONADO STREET, SUITE 201 ANAHEIM CALIFORNIA 92807 1000 S. FREMONT AVE, UNIT 53, BLDG. A1, SUITE 1218 ALHAMBRA CALIFORNIA 91803 www.SRDarchitectsinc.com O: 714 688 0212 • 626 202 0546 • FAX: 714 688 0244																																														
Drawing Title <b>DEMOLITION PLAN</b>		Project Title <b>REPLACE EPOXY FLOORING IN BUILDING 20</b>		Project Number <b>691A4-13-116SM</b>																																											
Approved Project Director		Location <b>16111 PLUMMER STREET SEPULVEDA, CA 91343</b>		Building Number <b>20</b>																																											
Date <b>05/15/2013</b>		Checked <b>W.H.</b>		Drawn <b>M.K.</b>																																											
				Drawing Number <b>AD-101</b>																																											
				Dwg. 5 of 8																																											
VA FORM 08-6231				<b>Office of Construction and Facilities Management</b> 																																											