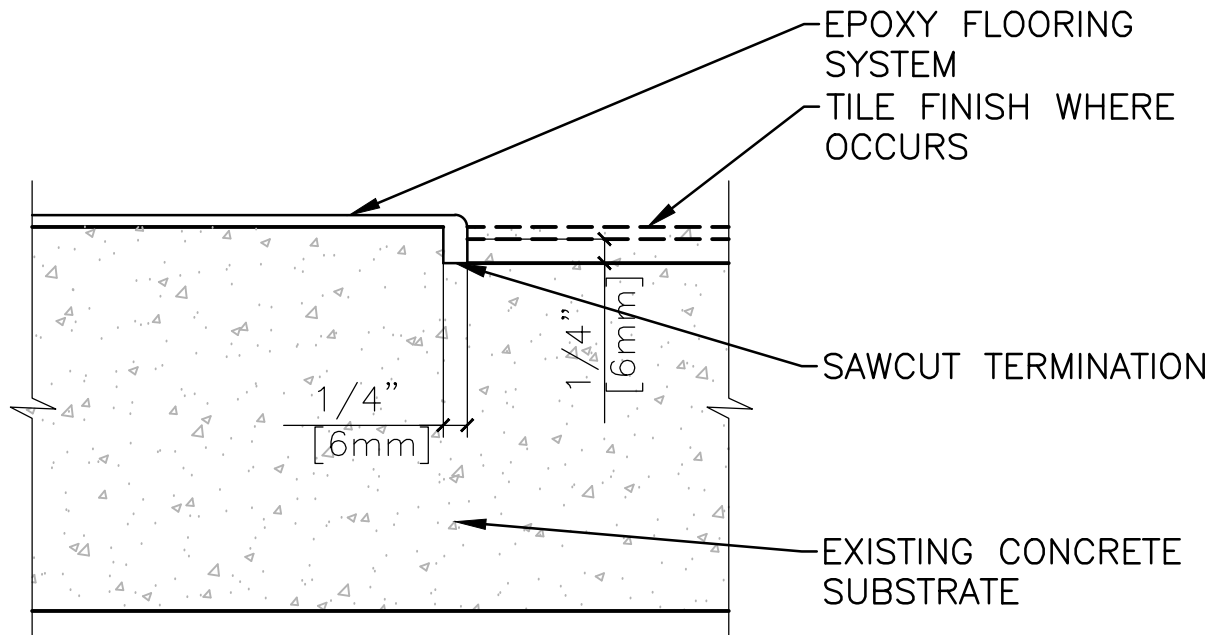
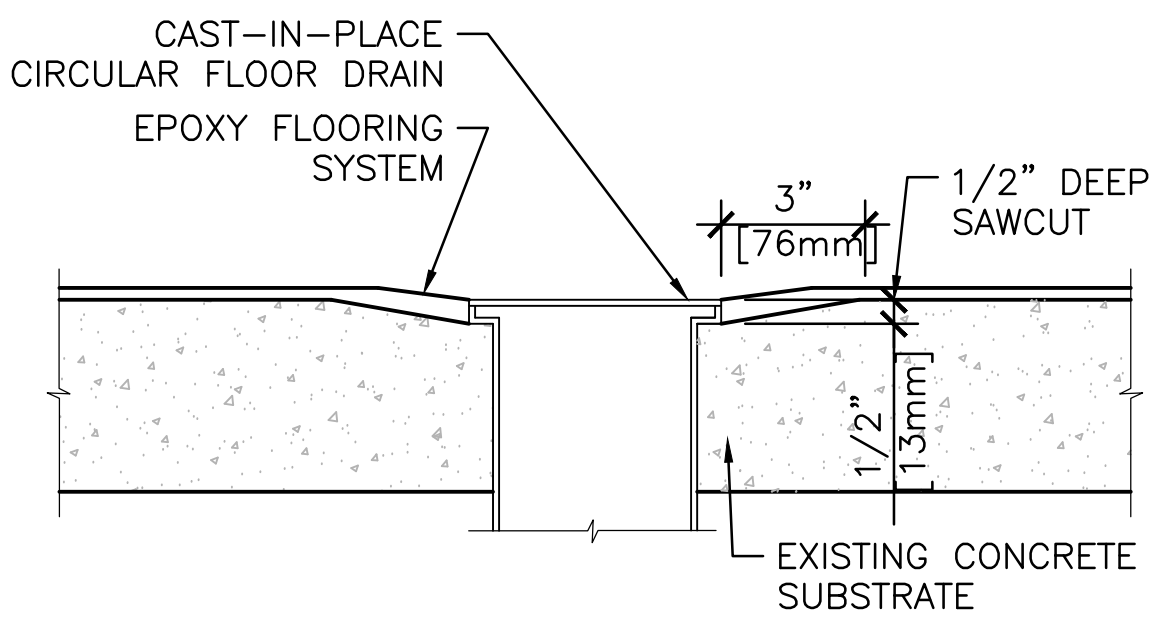


three inches = one foot
one and one half inches = one foot
one inch = one foot
three quarters inch = one foot
one half inch = one foot
three eighths inch = one foot
one quarter inch = one foot
one eighth inch = one foot

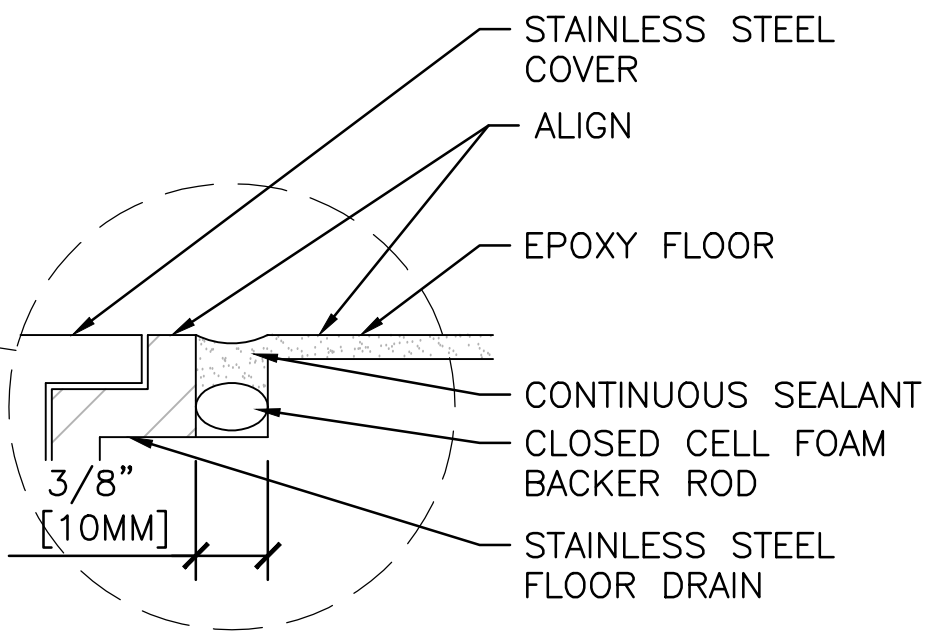
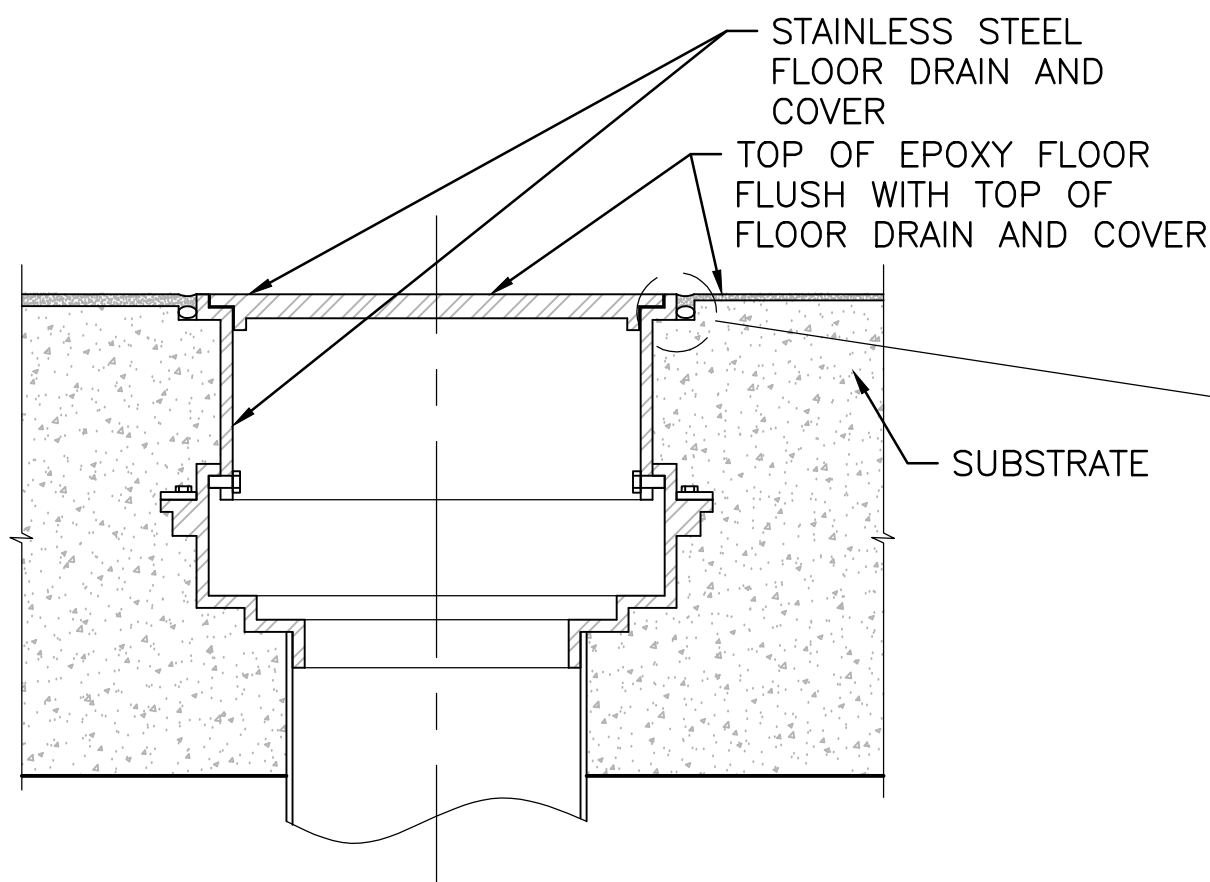


D1 EPOXY FLOORING DETAIL

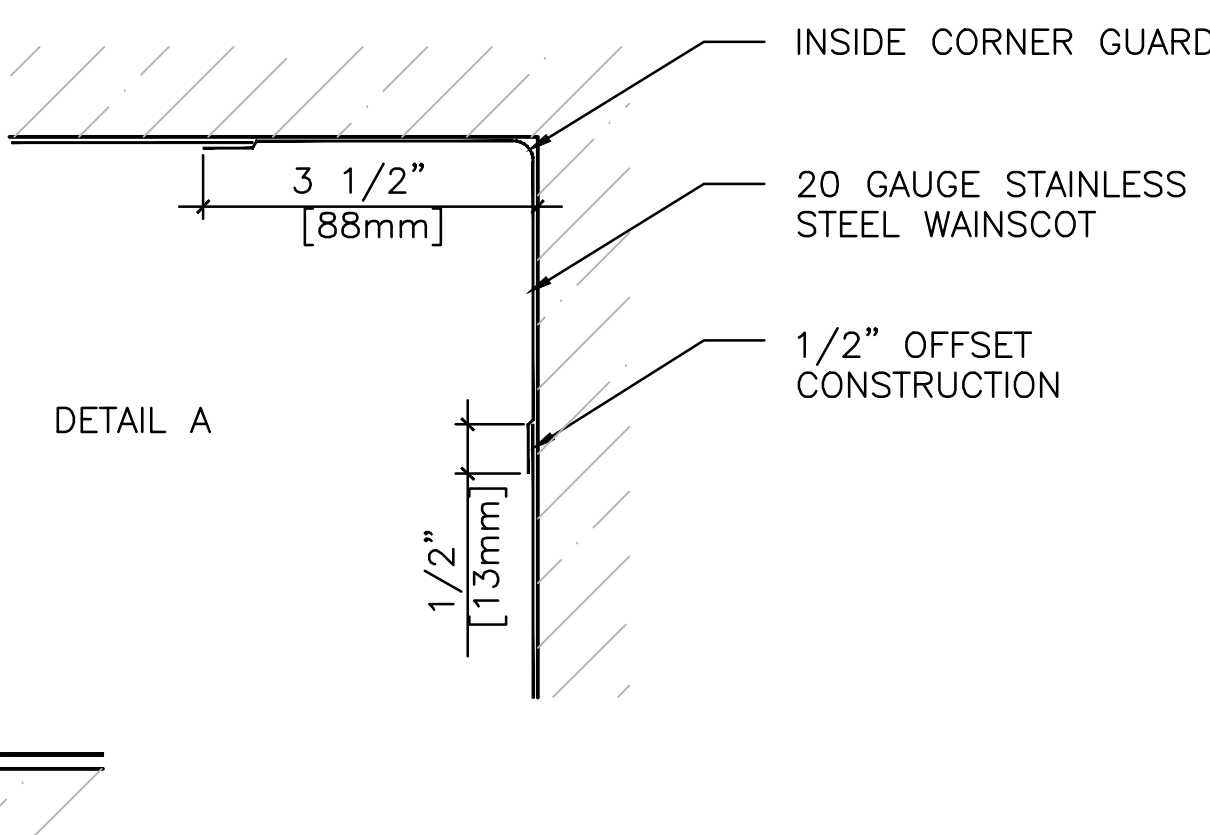
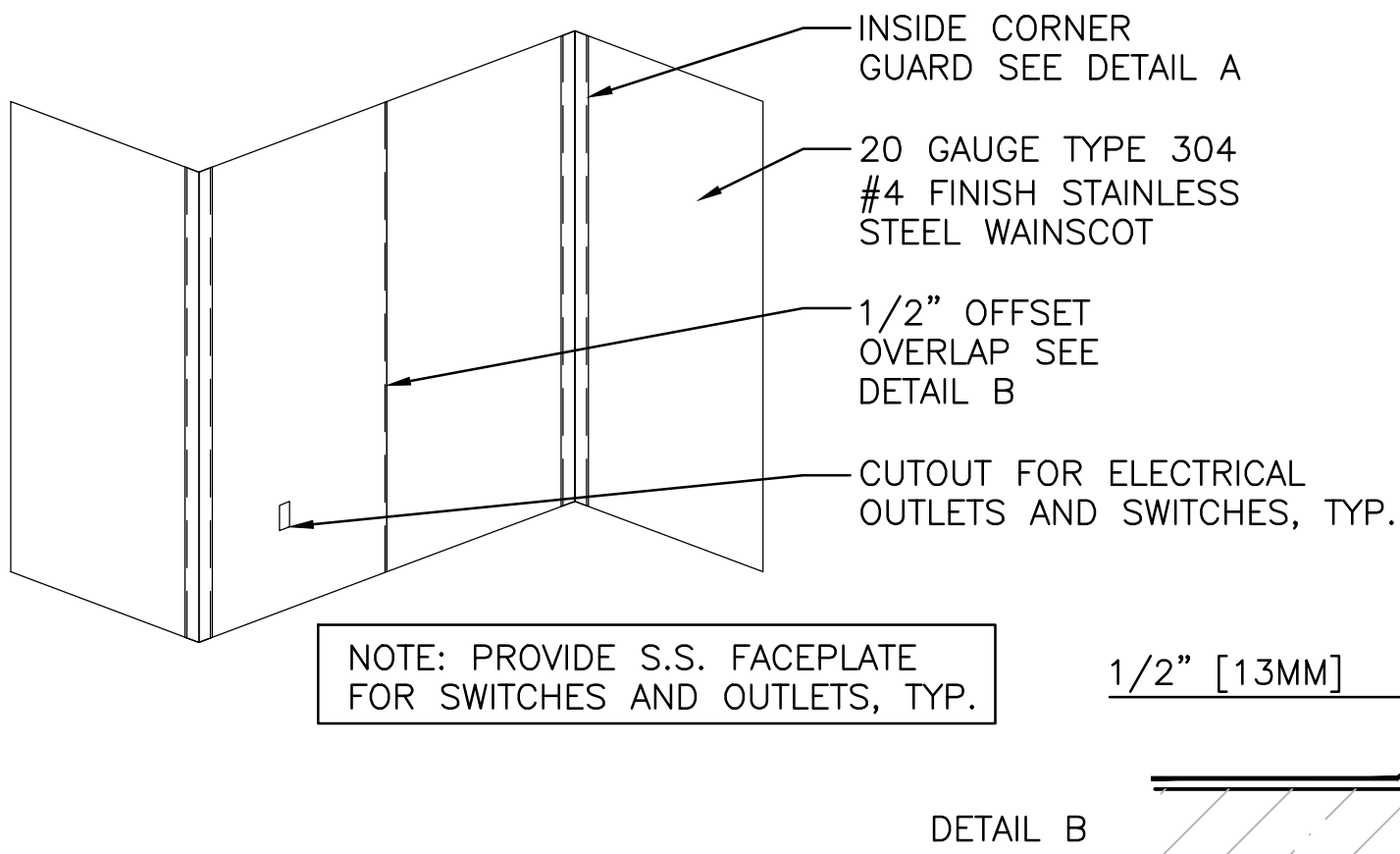


NOTE: CHIP CONCRETE BACK FROM 1/2" DEEP AT EMBEDDED DRAIN UP TO PREPARED SURFACE OVER MINIMUM OF 3" TO FORM TRANSITION.

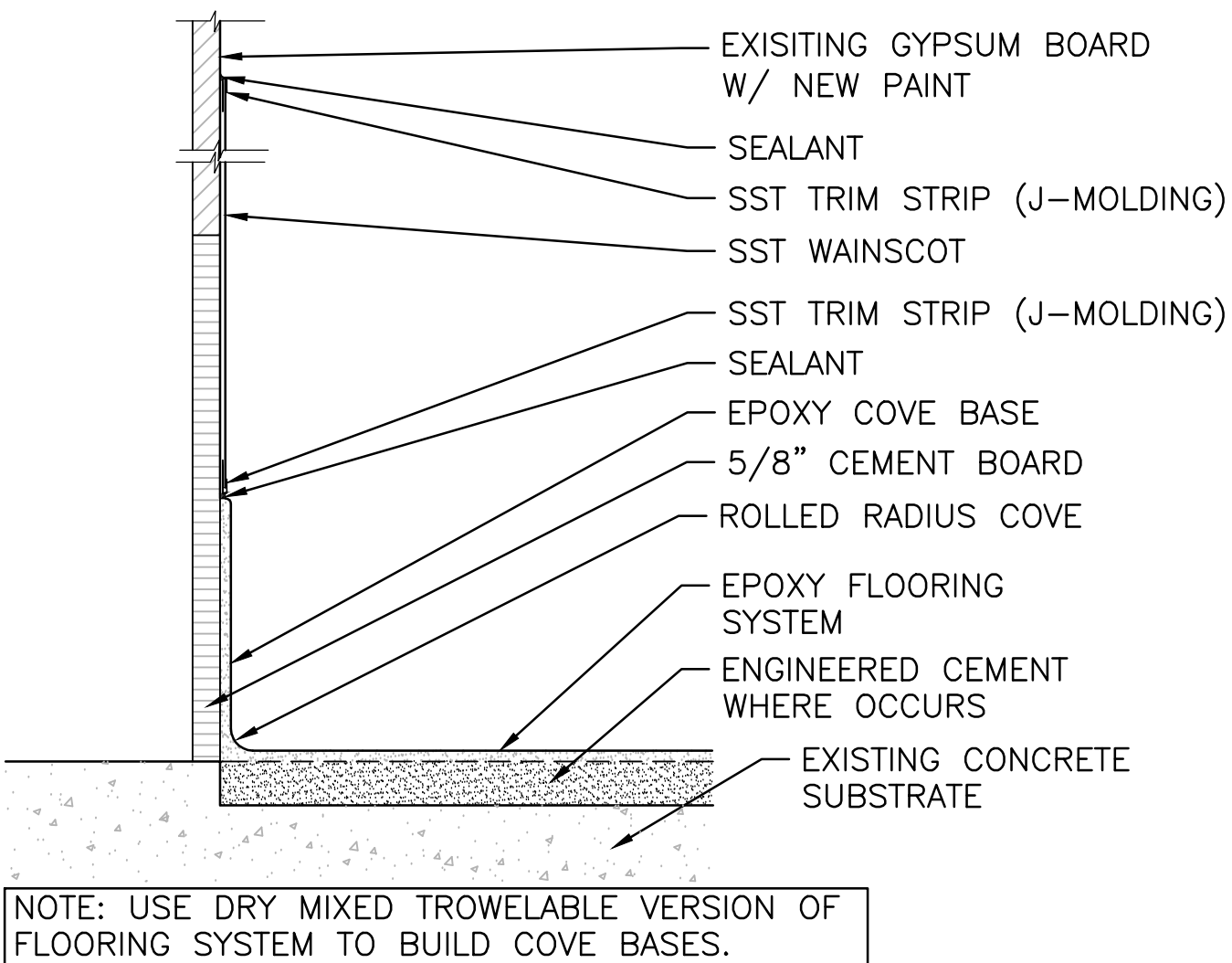
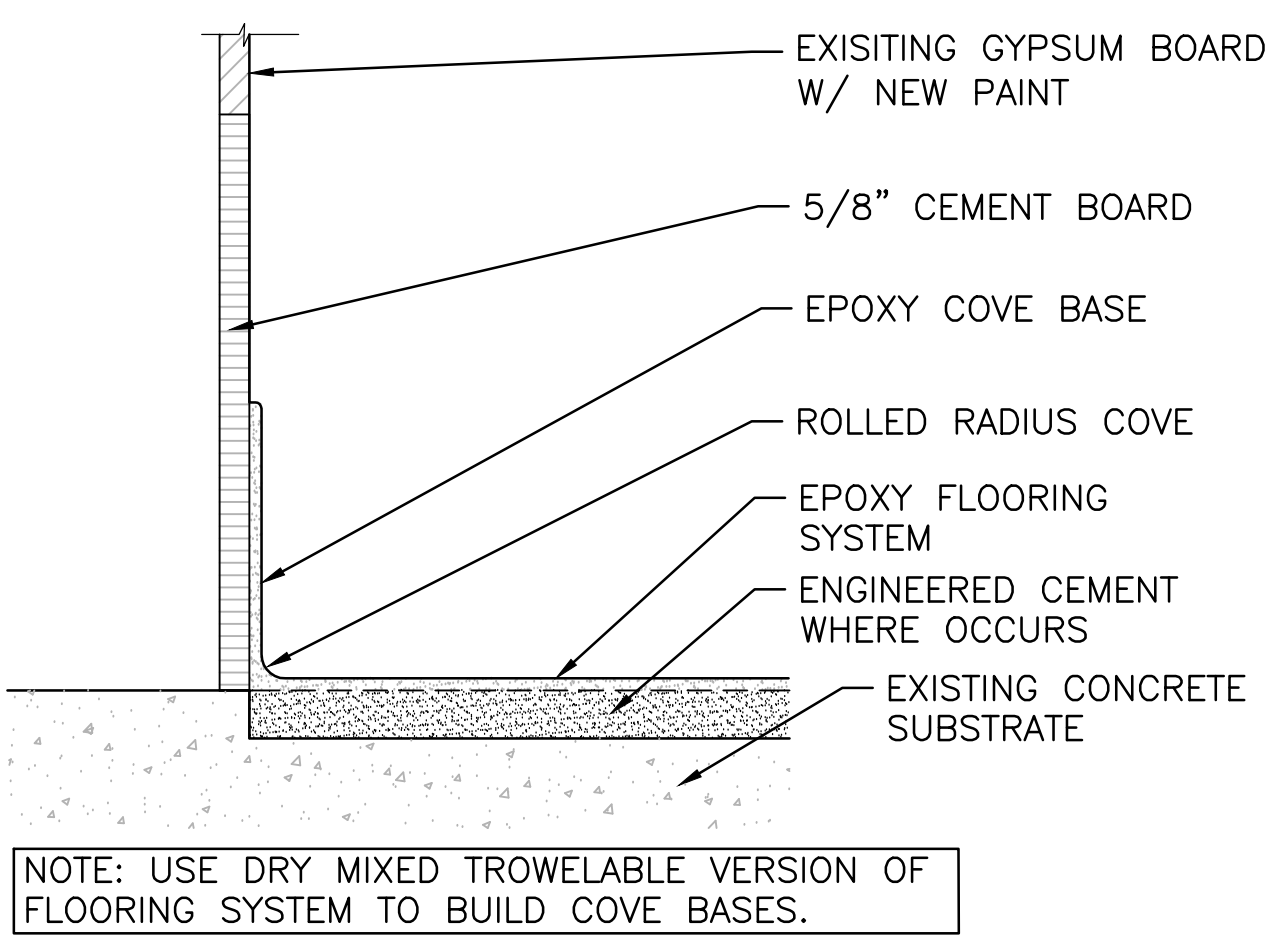
D2 EPOXY FLOORING DETAIL AT FLOOR DRAIN/CLEANOUT



C1 EPOXY FLOORING DETAIL AT FLOOR SINK



B1 STAINLESS STEEL WAINSCOT



A1 EPOXY FLOORING INTEGRAL BASE

A2 EPOXY FLOORING INTEGRAL BASE W/ WAINSCOT

C3 FINISH PLAN

SCALE 1/8"=1'-0"

ROOM NO.	ROOM NAME	FLOOR				BASE			NORTH WALL			EAST WALL			SOUTH WALL			WEST WALL			CEILING				REMARKS
		EXISTING	REPAIR	NEW	FINISH	EXISTING	NEW	FINISH	EXISTING	NEW	FINISH	EXISTING	NEW	FINISH	EXISTING	NEW	FINISH	EXISTING	NEW	FINISH	EXISTING	NEW	FINISH	HEIGHT	
1-A-104	PREPARATION			●	RES-6B	●	RES-6B		●	RES-W		●	RES-W		●	RES-W		●	RES-W	●				9'-2"	
1-A-105	PREPARATION			●	RES-6B	●	RES-6B		●	RES-W		●	RES-W		●	RES-W		●	RES-W	●				8'-8 1/2"	
1-A-107	STORGE ROOM			●	RES-6B	●	RES-6B		●	RES-W /SSW		●	RES-W /SSW		●	RES-W /SSW		●	RES-W /SSW	●				8'-10 1/2"	
1-C3	CORRIDOR			●	RES-6B	●	RES-6B		●	RES-W		●	RES-W		●	RES-W		●	RES-W	●				9'-6"	NEW PAINT FOR CMU WALLS
1-A-106	HAC	●				●			●			●			●			●			●			-	
1-A-108	CLOSET	●				●			●			●			●			●			●			-	
1-A-109	CLOSET	●				●			●			●			●			●			●			-	
	FREEZER VESTIBULE		●		QT	●			●			●			●			●			●			-	FLOOR FIN. TO MATCH EXISTING

FINISH NOTES :

- P1 - PAINT TYPE 1
RES-W - RESINOUS EPOXY WALL COATING
RES-B - HEAVY DUTY EPOXY NON CLIMATIC FLOORING SYSTEM W/ INTEGRAL BASE
SSW - STAINLESS STEEL WAINSCOT
QT - QUARRY TILE

RES-6B: EPOXY MORTAR - BASIS OF DESIGN:

1. MANUFACTURER: TNEC COMPANY INC. OR APPROVED EQUAL
2. SURFACE PREPARATION: SHOT BLAST OR MECH. ABRASE (CSP 4-9).
3. PRIMER: SERIES 201 EPOXOPRIME. DFT 6.0 TO 8.0 MILS.
4. INTERMEDIATE COAT: SERIES 223 DECO-TROWEL. DFT 1/4 INCH.
5. FINISH COAT (S): SERIES 284 DECO-CLEAR. DFT 8.0 TO 10.0 MILS.
6. TOTAL DFT: 1/4 INCH SYSTEM (250 MILS).

A3 ROOM FINISH SCHEDULE

35 % SCHEMATIC DESIGN	02/28/2013
65 % DESIGN DEVELOPMENT SUBMITTAL	04/08/2013
100% CONSTRUCTION DOCUMENT	05/15/2013
Revisions	Date

CONSULTANTS:



ARCHITECT/ENGINEERS:



3920 E. CORONADO STREET, SUITE 201
ANAHEIM CALIFORNIA 92807
1000 S FREMONT AVE, UNIT 53,
BLDG. A1, SUITE 1218
ALHAMBRA CALIFORNIA 91803
www.SRDarchitectsinc.com
O: 714 688 0212 • 626 202 0546 • FAX: 714 688 0244

Drawing Title

FINISH PLAN AND SCHEDULE

Approved Project Director

Project Title

REPLACE EPOXY FLOORING
IN BUILDING 20

Location 16111 PLUMMER STREET
SEPULVEDA, CA 91343

Date 05/15/2013

Checked

W.H.

Drawn

M.K.

Project Number

691A4-13-116SM

Building Number

20

Drawing Number

AS-601

Dwg. 8 of 8

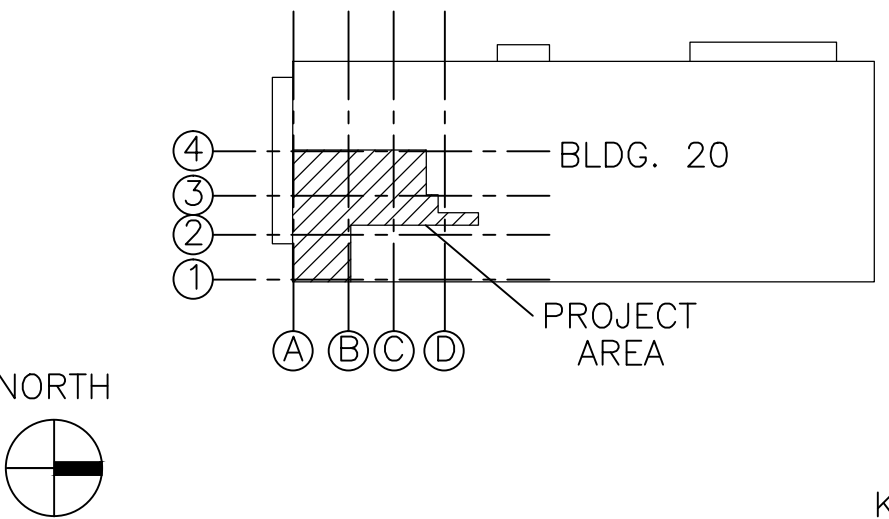
Office of
Construction
and Facilities
Management



INTERIOR FINISH NOTES

1. ENSURE SURFACES TO RECEIVE FINISHES ARE CLEAN, TRUE AND FREE OF IRREGULARITIES. DO NOT PROCEED WITH WORK UNTIL UNSATISFACTORY CONDITIONS HAVE BEEN CORRECTED.
2. NO FINISH SUBSTITUTIONS MAY BE MADE WITHOUT PRIOR WRITTEN AUTHORIZATION BY SRD ARCHITECTS INC.
3. ALL FINISHES SHALL BE APPLIED IN STRICT ACCORDANCE WITH MANUFACTURER'S SPECIFICATIONS.
4. PAINTING SUBCONTRACTOR SHALL EXAMINE WALLS TO ENSURE PROPER PREPARATION BEFORE APPLICATION. BEGINNING WORK IMPLIES ACCEPTANCE OF WALL CONDITIONS.
5. ALL EXISTING GYPSUM BOARD WALLS TO RECEIVE LEVEL 5 FINISH PER GYPSUM ASSOCIATION REF. GA-214-M-97.
6. ALL WALLS SHALL RECEIVE ONE (1) PRIMER COAT AND TWO (2) COATS OF PAINT. FINISH SHALL HAVE CONSISTENT COVERAGE, FREE OR ROLLER OR BRUSH MARKS.
7. ALL METAL DOORS SHALL BE PAINTED INSIDE AND OUTSIDE TO MATCH ADJACENT WALL FINISH U.N.O. ANY GRAPHICS ON EXISTING DOORS SHALL BE REPAINTED OR REAPPLIED TO MATCH EXISTING.
8. CONTRACTOR TO FIELD VERIFY EXISTING CONDITION OF FLOORS RECEIVING NEW FINISH. CONTRACTOR SHALL INCLUDE ALL REQUIRED FLOOR PREPARATION IN BID, INCLUDING CONCRETE FLOOR LEVELING AND SEALING. FLOAT FLOOR WHERE NECESSARY TO ACHIEVE TOLERANCE OF 1/2" MAX. IN 10'-0 SPAN. REPAIR SURFACE AS REQUIRED AFTER REMOVING EXISTING FINISHES.
9. ALL EXISTING CONCRETE FLOORS TO BE SEALED PRIOR TO INSTALLATION OF FINISH FLOORING PER MANUFACTURER'S RECOMMENDATIONS.
10. PROVIDE COVE BASE AS INDICATED ON FLOOR PLAN. SEE ROOM FINISH SCHEDULE FOR SPECIFICATIONS.
11. PATCH AND REPAIR DAMAGED GYPSUM BOARD.
12. PAINT ALL WALLS, DOORS AND FRAMES EXCEPT REFRIGERATOR AND FREEZER DOOR.
13. REINSTALL ROOM SIGNS.
14. REINSTALL EXISTING FIRE EXTINGUISHERS.
15. COLOR OF MATERIALS SHALL BE SELECTED BY VA INTERIOR DESIGN GROUP AND ARCHITECT.
16. DO NOT PAINT ELECTRICAL PANELS AND SHUT OFF BOXES ON THE WALL.

KEY PLAN



KEY PLAN

100% CONSTRUCTION DOCUMENT