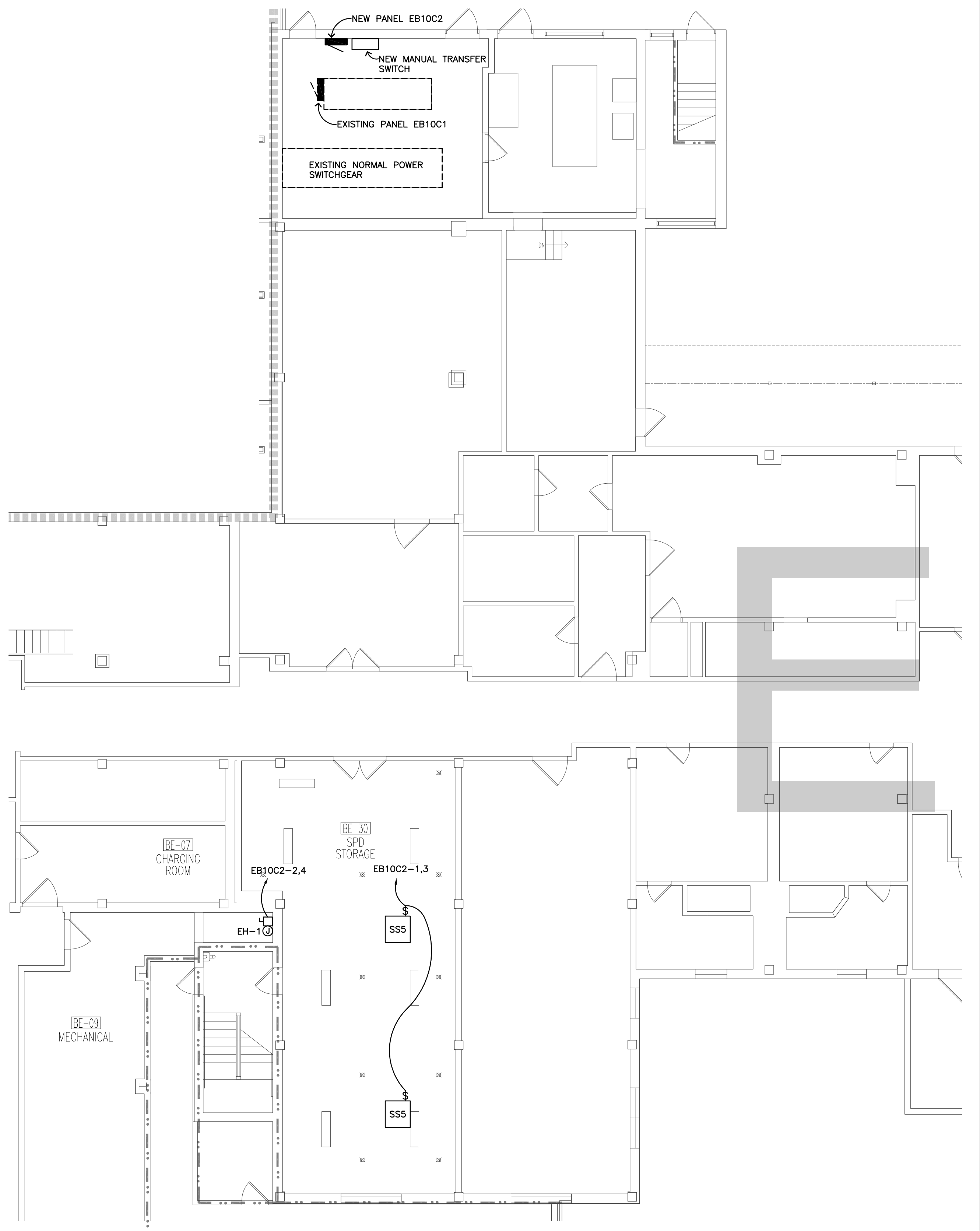


1 BASEMENT ELECTRICAL PLAN - 'A' AND 'B' WINGS
EB.1

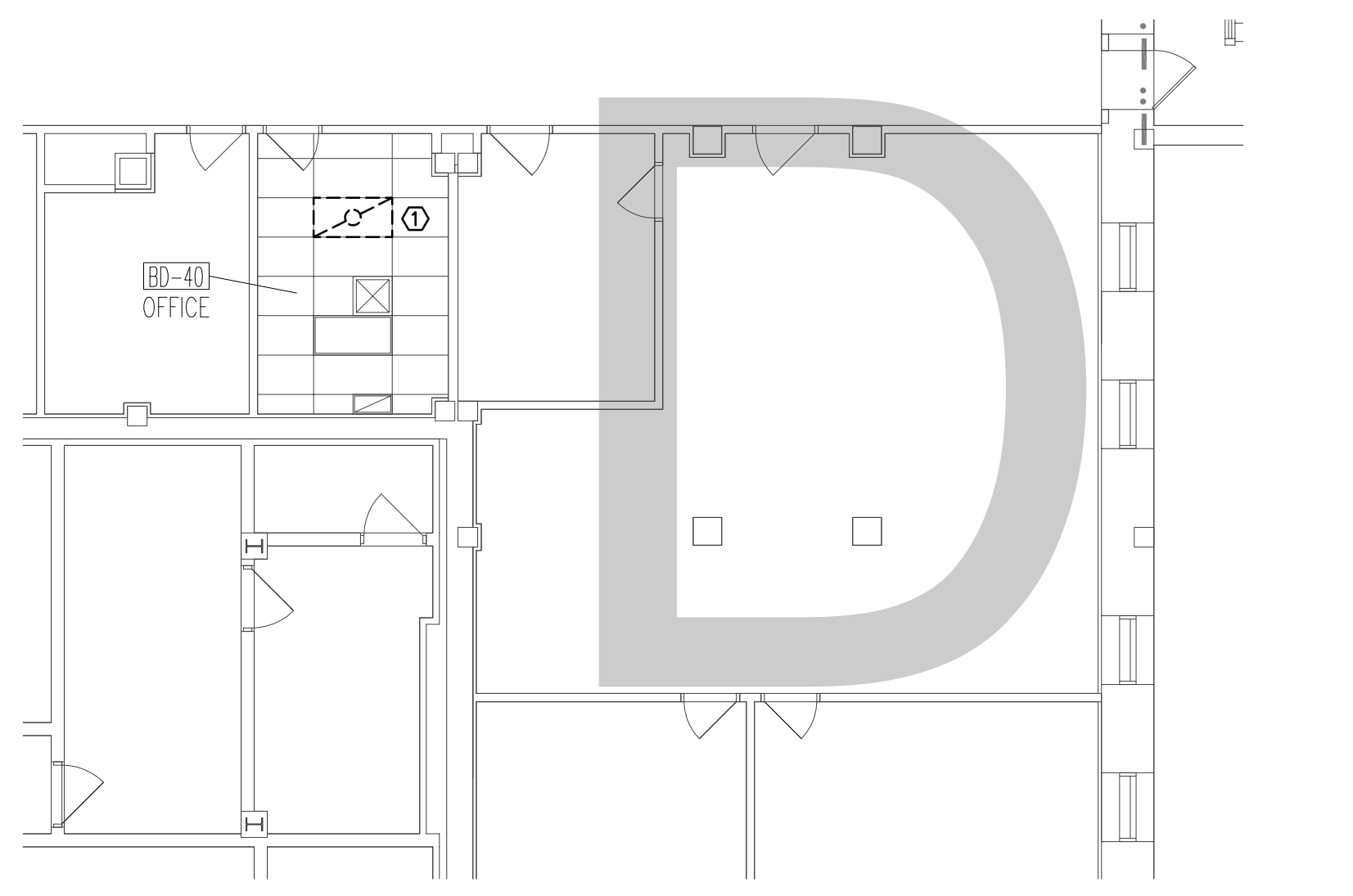
ELECTRICAL SYMBOLS LEGEND	
SYMBOLS	DESCRIPTION
	DASHED LINES INDICATE EXISTING FIXTURES, DEVICES, OR EQUIPMENT
	RECESSED FLUORESCENT
	CEILING SURFACE MOUNTED LIGHT FIXTURE
	SURFACE MOUNTED LIGHT FIXTURE
	CEILING EXIT SIGN, SHADED SIDE INDICATES LIGHTED FACE
	CEILING MOUNTED RECESSED SPEAKER
	SMOKE DETECTOR
	NURSE CALL CEILING LIGHT
	WIRELESS ACCESS ROUTER
	PANEL BOARD
	NON FUSED DISCONNECT
	FUSED DISCONNECT
	DISCONNECT
	NOTE IDENTIFICATION
	ONE HOUR FIRE BARRIER
	TWO HOUR FIRE BARRIER
	ONE HOUR FIRE/SMOKE BARRIER
	TWO HOUR FIRE/SMOKE BARRIER

PHASING NOTES:	
1.	ALL WORK IN FIRST FLOOR ROOMS EXCEPT 1B-42 AND 1A-72 SHALL OCCUR DURING OVERTIME AND/OR WEEKEND HOURS. SPACES SHALL BE CLEANED AND RETURNED TO WORKING ORDER PRIOR TO USE BY THE VA STAFF DURING NORMAL BUSINESS HOURS.
2.	CAREFULLY COORDINATE WITH THE OWNER A MINIMUM OF 2 WEEKS IN ADVANCE PRIOR TO WORK COMMENCING.
3.	REFER TO SHEET X1 GENERAL NOTES AND ARCHITECTURAL SHEETS FOR SPECIFIC PHASING INFORMATION FOR INDIVIDUAL SPACES.

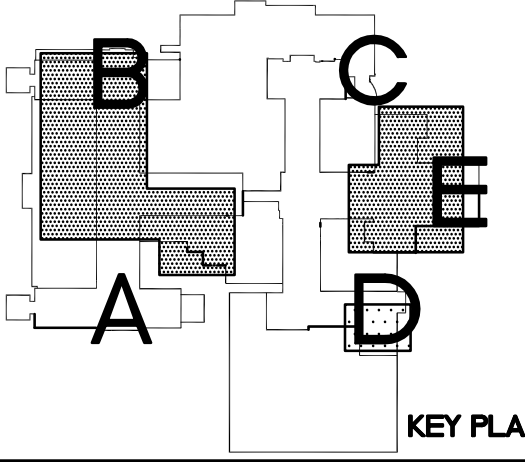
PLAN NOTES:	
①	DISCONNECT AND REMOVE EXISTING LIGHT FIXTURE. FIXTURE TO BE REINSTALLED WHERE SHOWN UPON COMPLETION OF CEILING INSTALLATION.
②	DISCONNECT AND REMOVE EXISTING SPEAKER. SPEAKER TO BE REINSTALLED UPON COMPLETION OF CEILING INSTALLATION.
③	EXPOSED STRUCTURE IN ROOM, DISCONNECT, REMOVE AND REINSTALL EXISTING LIGHT FIXTURES AS REQUIRED. VERIFY WORK REQUIRED WITH MECHANICAL CONTRACTOR.
④	CONDUIT MUST BE NOT BE ROUTED WITHIN CLEAN STORAGE BB-15.



3 BASEMENT ELECTRICAL PLAN - 'E' WING
EB.1

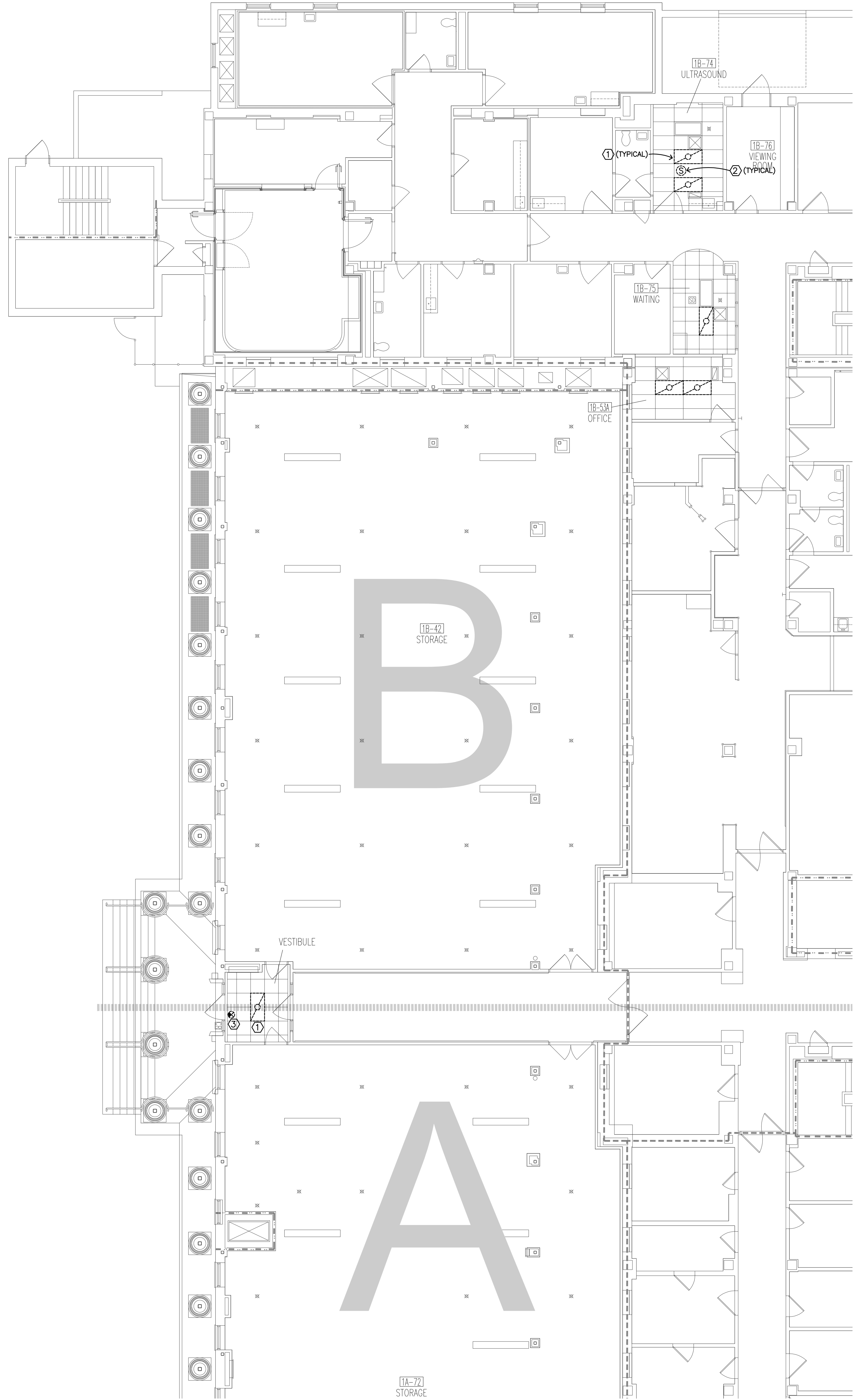


2 BASEMENT ELECTRICAL PLAN - 'D' WING
EB.1

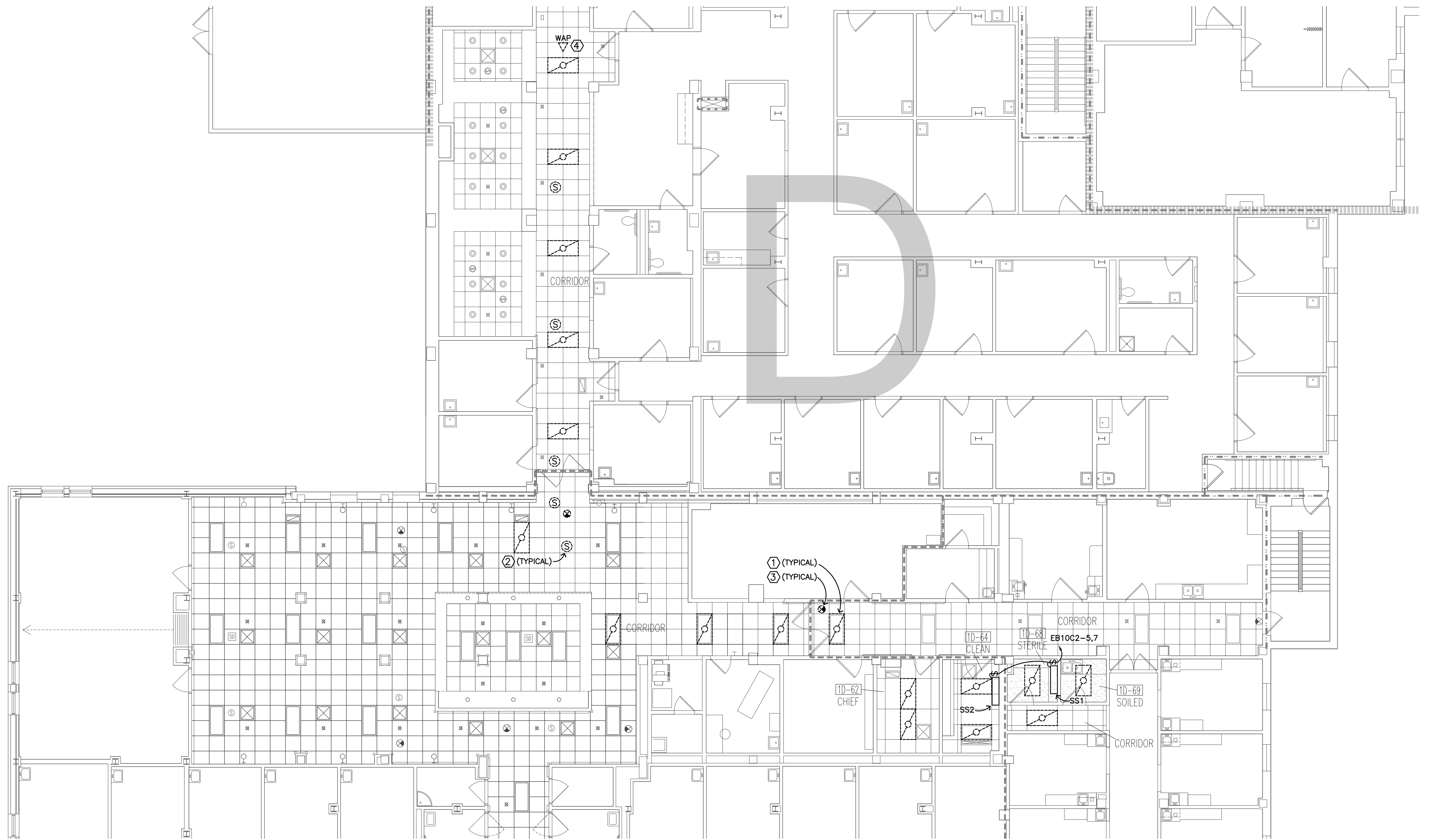


4/Project/2013/13-027/Draw/13-027 EB.dwg Jul 09, 2013 - 8:14am

<p>Dept. of Veterans Affairs Health Care System 2101 Elm Street North Fargo, ND 58102</p>		<p>IMAGE GROUP INC., Architecture & Interiors OBERMILLER NELSON ENGINEERING, Mechanical Engineers MBN ENGINEERING, Electrical Engineers</p>				<p>Drawing Title BASEMENT ELECTRICAL PLAN - 'A', 'B', 'D' AND 'E' WINGS</p>		<p>Project Title IMPROVE SPS/LOGISTICS STORAGE ROOM HVAC SYSTEMS</p>		<p>Date JULY 5, 2013</p>	
<p>VA Project No. 437-13-103</p>		<p>Contract No. VA263-P-1217</p>		<p>Designed By MB</p>		<p>Checked By MB</p>		<p>Drawn By TP</p>		<p>Drawing No. EB.1</p>	
<p>Building No. 1, 9, 46</p>		<p>AutoCAD File Name 13-027 EB.1.dwg</p>		<p>Location FARGO VA HEALTH CARE SYSTEM FARGO, ND</p>		<p>Dwg. 15 of 21</p>					



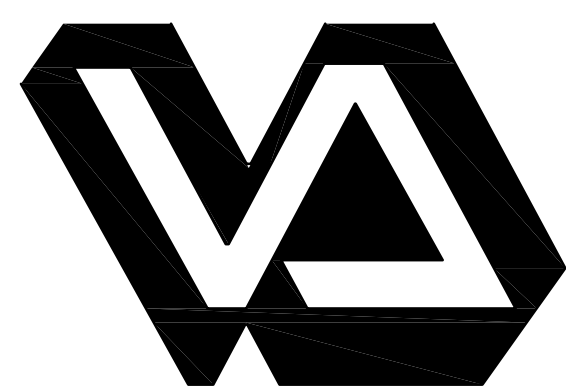
1
E1.1
FIRST FLOOR ELECTRICAL PLAN - 'A' AND 'B' WINGS



2
E1.1
FIRST FLOOR ELECTRICAL PLAN - 'D' WING

- PHASING NOTES:
1. ALL WORK IN FIRST FLOOR ROOMS EXCEPT 1B-42 AND 1A-72 SHALL OCCUR DURING OVERTIME AND/OR WEEKEND HOURS. SPACES SHALL BE CLEANED AND RETURNED TO WORKING ORDER PRIOR TO USE BY THE VA STAFF DURING NORMAL BUSINESS HOURS.
 2. CAREFULLY COORDINATE WITH THE OWNER A MINIMUM OF 2 WEEKS IN ADVANCE PRIOR TO WORK COMMENCING.
 3. REFER TO SHEET X1 GENERAL NOTES AND ARCHITECTURAL SHEETS FOR SPECIFIC PHASING INFORMATION FOR INDIVIDUAL SPACES.

- PLAN NOTES:
- ① DISCONNECT AND REMOVE EXISTING LIGHT FIXTURE. FIXTURE TO BE REINSTALLED WHERE SHOWN UPON COMPLETION OF CEILING INSTALLATION.
 - ② DISCONNECT AND REMOVE EXISTING SPEAKER. SPEAKER TO BE REINSTALLED UPON COMPLETION OF CEILING INSTALLATION.
 - ③ DISCONNECT AND REMOVE EXISTING EXIT LIGHT FIXTURE. FIXTURE TO BE REINSTALLED UPON COMPLETION OF CEILING INSTALLATION.
 - ④ DISCONNECT AND REMOVE EXISTING WIRELESS ACCESS ROUTER. ROUTE TO BE REINSTALLED UPON COMPLETION OF CEILING INSTALLATION.

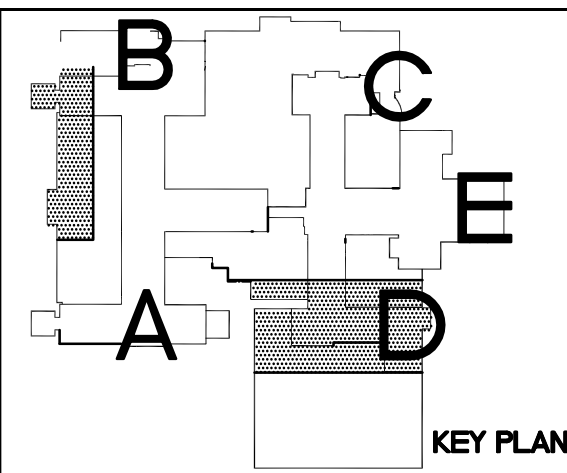


Dept. of Veterans Affairs
Health Care System
2101 Elm Street North
Fargo, ND 58102



IMAGE GROUP INC.
403 CENTER AVENUE, SUITE 300
MOORHEAD, MN 56560

IMAGE GROUP INC., Architecture & Interiors
OBERMILLER NELSON ENGINEERING, Mechanical Engineers
MBN ENGINEERING, Electrical Engineers



Drawing Title
FIRST FLOOR ELECTRICAL PLAN -
'A', 'B' AND 'D' WINGS

VA Project No.
437-13-103

Building No.
1, 9, 46

Contract No.
VA263-P-1217
VA263-C-

AutoCAD File Name
13-027 E1.1_E12.dwg

Project Title
IMPROVE SPS/LOGISTICS
STORAGE ROOM HVAC SYSTEMS

Designed By
MB

Checked By
MB

Drawn By
TP

Location
FARGO VA HEALTH CARE SYSTEM
FARGO, ND

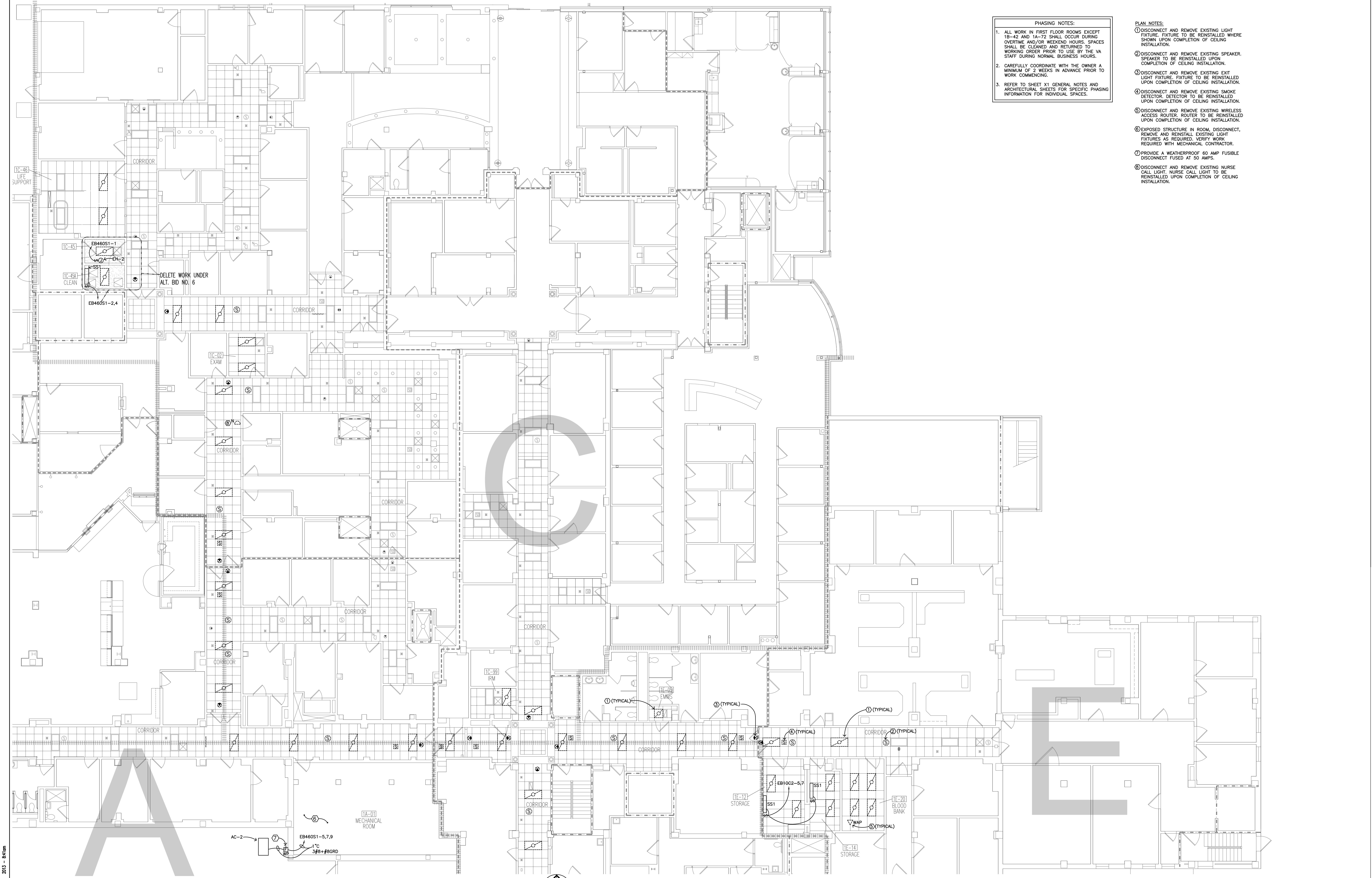
Date
JULY 5, 2013

Scale:
1/8" = 1'-0"

Drawing No.
E1.1

Dwg. 16 of 21

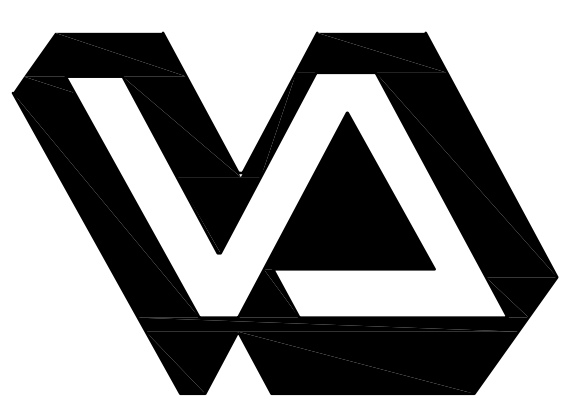




- PHASING NOTES:
1. ALL WORK IN FIRST FLOOR ROOMS EXCEPT 1B-42 AND 1A-72 SHALL OCCUR DURING OVERTIME AND/OR WEEKEND HOURS. SPACES SHALL BE CLEANED AND RETURNED TO WORKING ORDER PRIOR TO USE BY THE VA STAFF DURING NORMAL BUSINESS HOURS.
 2. CAREFULLY COORDINATE WITH THE OWNER A MINIMUM OF 2 WEEKS IN ADVANCE PRIOR TO WORK COMMENCING.
 3. REFER TO SHEET X1 GENERAL NOTES AND ARCHITECTURAL SHEETS FOR SPECIFIC PHASING INFORMATION FOR INDIVIDUAL SPACES.

- PLAN NOTES:
- ① DISCONNECT AND REMOVE EXISTING LIGHT FIXTURE. FIXTURE TO BE REINSTALLED WHERE SHOWN UPON COMPLETION OF CEILING INSTALLATION.
 - ② DISCONNECT AND REMOVE EXISTING SPEAKER. SPEAKER TO BE REINSTALLED UPON COMPLETION OF CEILING INSTALLATION.
 - ③ DISCONNECT AND REMOVE EXISTING EXIT LIGHT FIXTURE. FIXTURE TO BE REINSTALLED UPON COMPLETION OF CEILING INSTALLATION.
 - ④ DISCONNECT AND REMOVE EXISTING SMOKE DETECTOR. DETECTOR TO BE REINSTALLED UPON COMPLETION OF CEILING INSTALLATION.
 - ⑤ DISCONNECT AND REMOVE EXISTING WIRELESS ACCESS ROUTER. ROUTER TO BE REINSTALLED UPON COMPLETION OF CEILING INSTALLATION.
 - ⑥ EXPOSED STRUCTURE IN ROOM, DISCONNECT, REMOVE AND REINSTALL EXISTING LIGHT FIXTURES AS REQUIRED. VERIFY WORK REQUIRED WITH MECHANICAL CONTRACTOR.
 - ⑦ PROVIDE A WEATHERPROOF 60 AMP FUSIBLE DISCONNECT FUSED AT 50 AMPS.
 - ⑧ DISCONNECT AND REMOVE EXISTING NURSE CALL LIGHT. NURSE CALL LIGHT TO BE REINSTALLED UPON COMPLETION OF CEILING INSTALLATION.

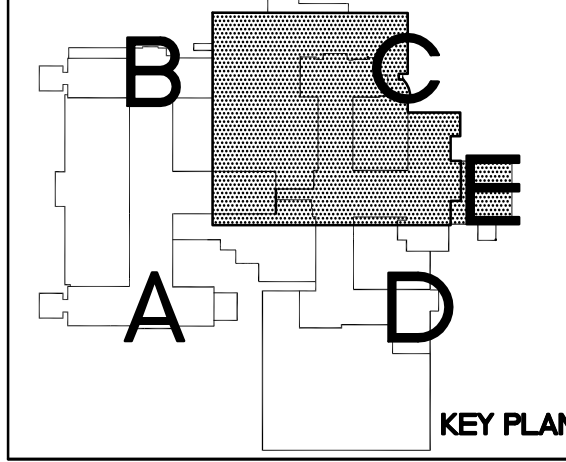
1
E12
FIRST FLOOR ELECTRICAL PLAN - 'A', 'C', AND 'E' WINGS



Dept. of Veterans Affairs
Health Care System
2101 Elm Street North
Fargo, ND 58102

IMAGE GROUP INC.
403 CENTER AVENUE, SUITE 300
MOORHEAD, MN 56560

IMAGE GROUP INC., Architecture & Interiors
OBERMILLER NELSON ENGINEERING, Mechanical Engineers
MBN ENGINEERING, Electrical Engineers



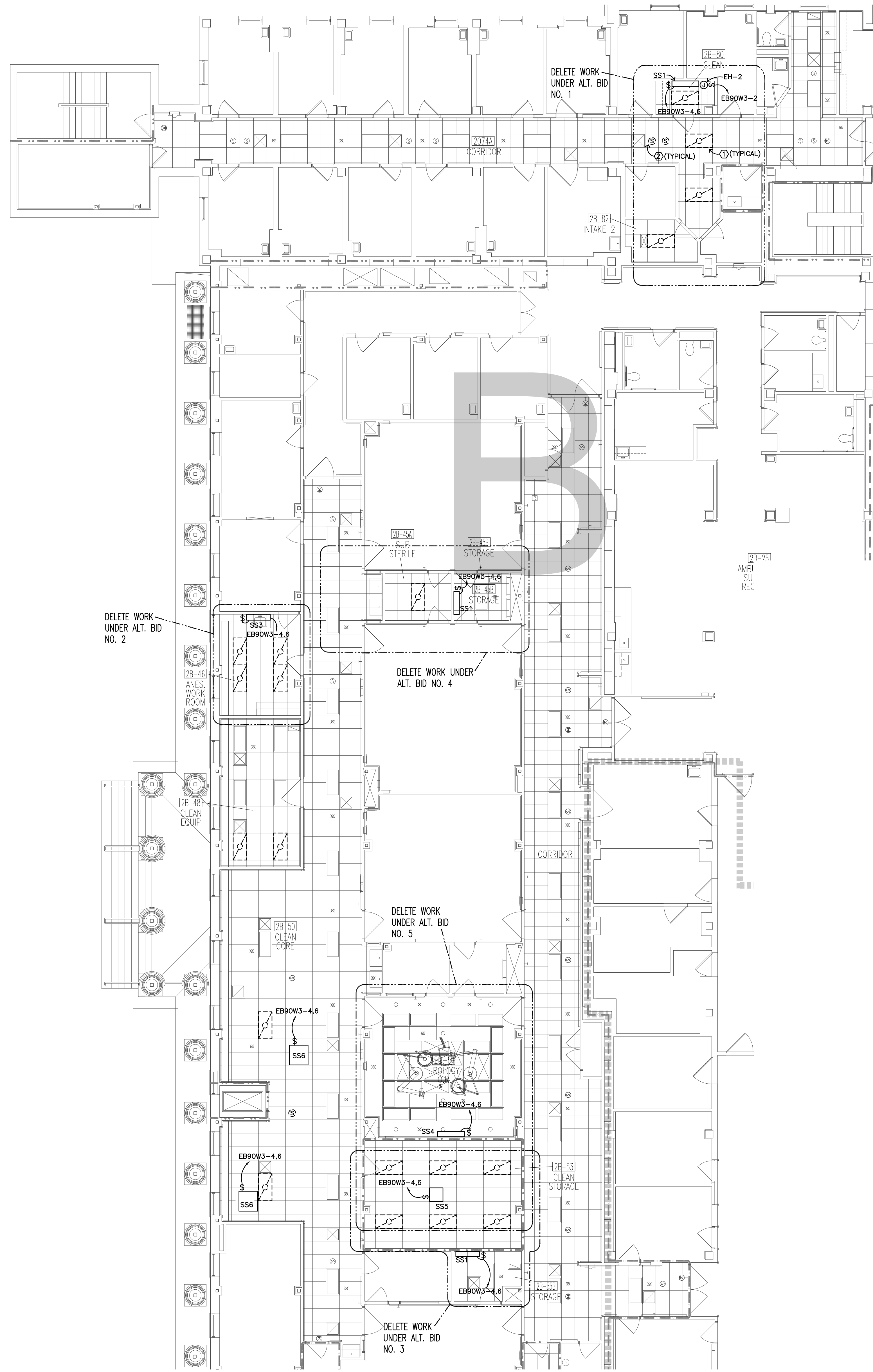
Drawing Title FIRST FLOOR ELECTRICAL PLAN - 'A', 'C' AND 'E' WINGS	
VA Project No. 437-13-103	Contract No. VA263-P-1217 VA263-C-
Building No. 1, 9, 46	AutoCAD File Name 13-027 E11_E12.dwg

Project Title IMPROVE SPS/LOGISTICS STORAGE ROOM HVAC SYSTEMS	
Designed By MB	Checked By MB
Drawn By TP	Location FARGO VA HEALTH CARE SYSTEM FARGO, ND

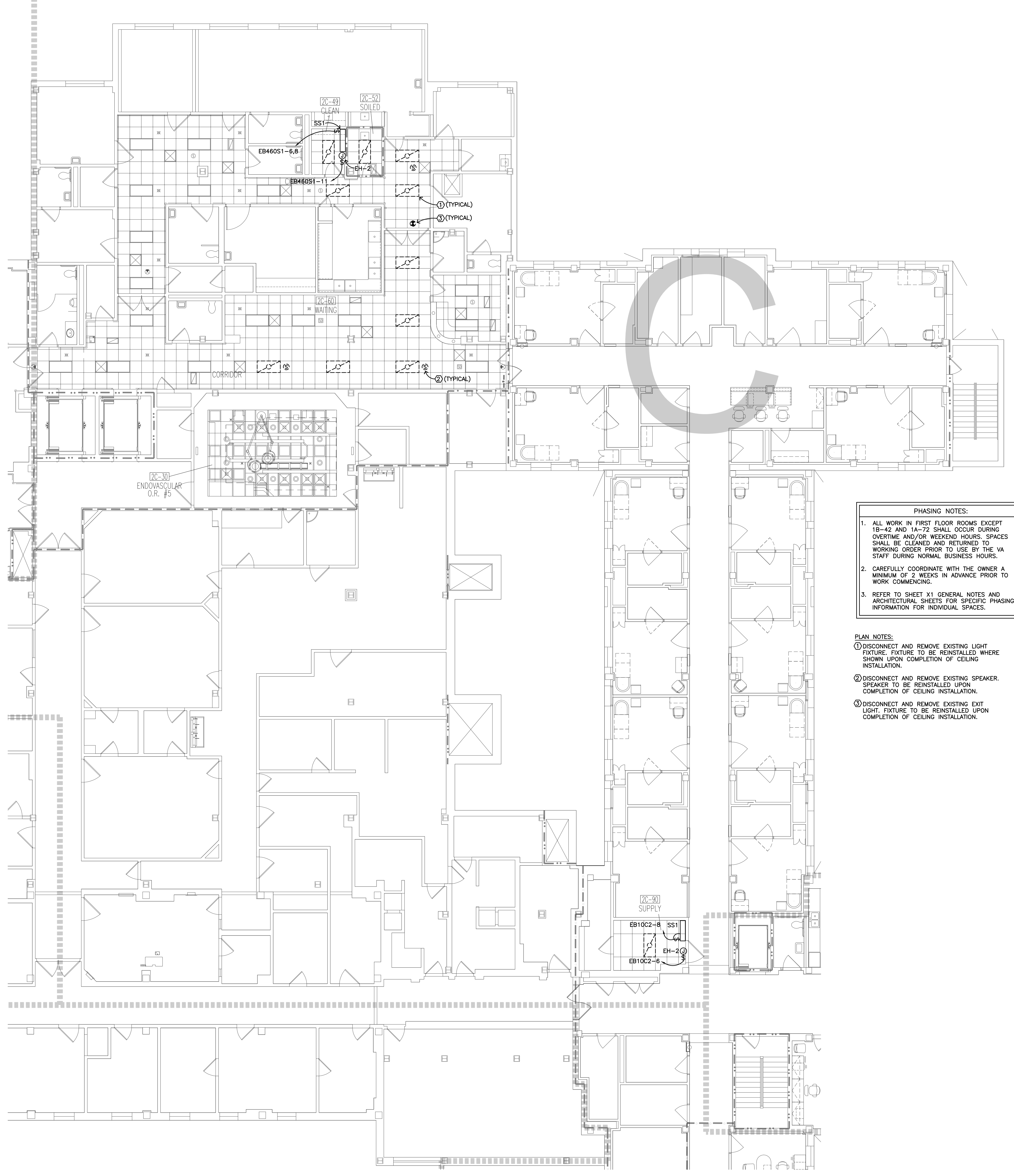
Date JULY 5, 2013	Scale: 1/8" = 1'-0"
Drawing No. E12	Dwg. 17 of 21



J:\Projects\2013\13-027\13-027 E11_E12.dwg Jul 09, 2013 - 8:41am



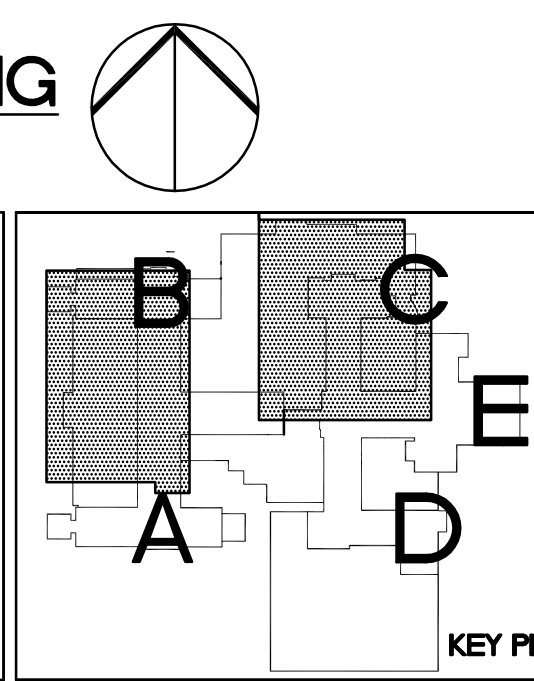
2
E2.1 SECOND FLOOR ELECTRICAL PLAN - 'B' WING



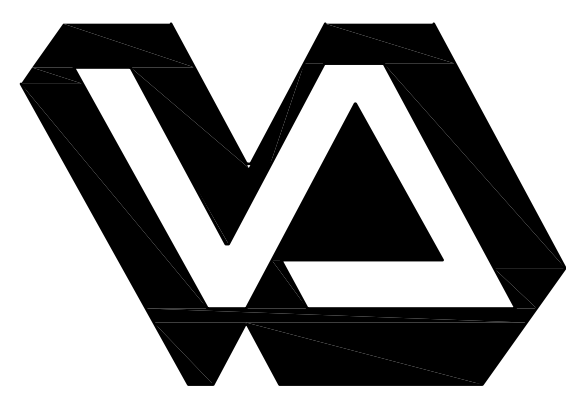
1
E2.1 SECOND FLOOR ELECTRICAL PLAN - 'C' WING

- PHASING NOTES:
1. ALL WORK IN FIRST FLOOR ROOMS EXCEPT 1B-42 AND 1A-72 SHALL OCCUR DURING OVERTIME AND/OR WEEKEND HOURS. SPACES SHALL BE CLEANED AND RETURNED TO WORKING ORDER PRIOR TO USE BY THE VA STAFF DURING NORMAL BUSINESS HOURS.
 2. CAREFULLY COORDINATE WITH THE OWNER A MINIMUM OF 2 WEEKS IN ADVANCE PRIOR TO WORK COMMENCING.
 3. REFER TO SHEET X1 GENERAL NOTES AND ARCHITECTURAL SHEETS FOR SPECIFIC PHASING INFORMATION FOR INDIVIDUAL SPACES.

- PLAN NOTES:
1. DISCONNECT AND REMOVE EXISTING LIGHT FIXTURE. FIXTURE TO BE REINSTALLED WHERE SHOWN UPON COMPLETION OF CEILING INSTALLATION.
 2. DISCONNECT AND REMOVE EXISTING SPEAKER. SPEAKER TO BE REINSTALLED UPON COMPLETION OF CEILING INSTALLATION.
 3. DISCONNECT AND REMOVE EXISTING EXIT LIGHT. FIXTURE TO BE REINSTALLED UPON COMPLETION OF CEILING INSTALLATION.



Drawing Title SECOND FLOOR ELECTRICAL PLAN - 'B' AND 'C' WINGS		Project Title IMPROVE SPS/LOGISTICS STORAGE ROOM HVAC SYSTEMS		Date JULY 5, 2013
VA Project No. 437-13-103	Contract No. VA263-P-1217 VA263-C-	Designed By MB	Checked By MB	Scale: 1/8" = 1'-0"
Building No. 1, 9, 46	AutoCAD File Name 13-027 E2.1.dwg	Drawn By TP	Location FARGO VA HEALTH CARE SYSTEM FARGO, ND	Drawing No. E2.1
				Dwg. 18 of 21



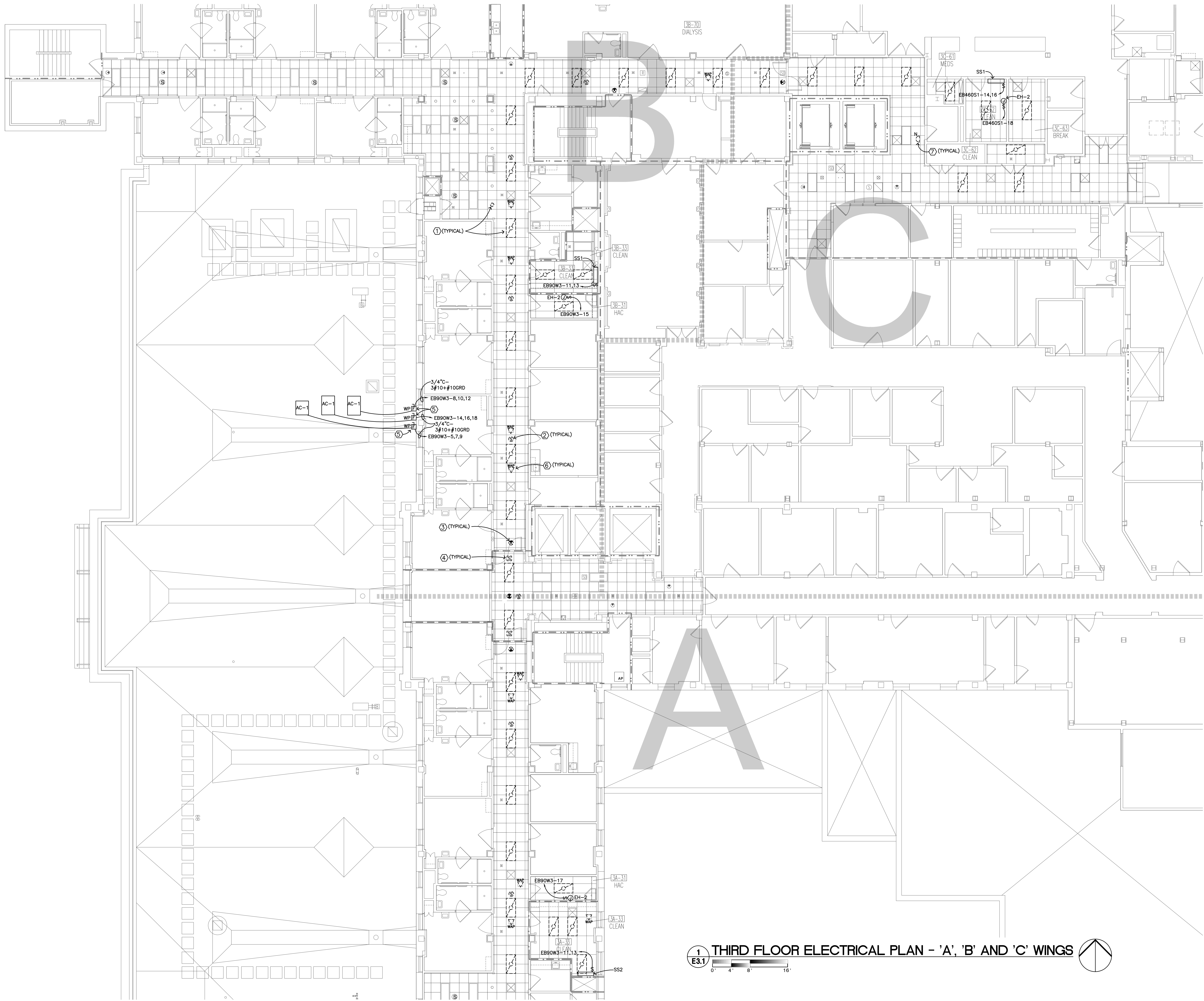
Dept. of Veterans Affairs
Health Care System
2101 Elm Street North
Fargo, ND 58102



IMAGE GROUP INC.
403 CENTER AVENUE, SUITE 300
MOORHEAD, MN 56560

IMAGE GROUP INC., Architecture & Interiors
OBERMILLER NELSON ENGINEERING, Mechanical Engineers
MBN ENGINEERING, Electrical Engineers





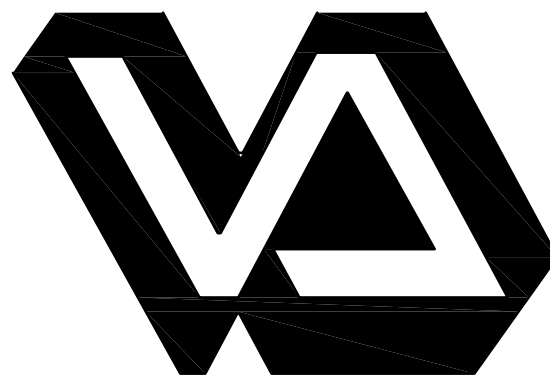
- PHASING NOTES:
1. ALL WORK IN FIRST FLOOR ROOMS EXCEPT 1B-42 AND 1A-72 SHALL OCCUR DURING OVERTIME AND/OR WEEKEND HOURS. SPACES SHALL BE CLEANED AND RETURNED TO WORKING ORDER PRIOR TO USE BY THE VA STAFF DURING NORMAL BUSINESS HOURS.
 2. CAREFULLY COORDINATE WITH THE OWNER A MINIMUM OF 2 WEEKS IN ADVANCE PRIOR TO WORK COMMENCING.
 3. REFER TO SHEET X1 GENERAL NOTES AND ARCHITECTURAL SHEETS FOR SPECIFIC PHASING INFORMATION FOR INDIVIDUAL SPACES.

- PLAN NOTES:
- ① DISCONNECT AND REMOVE EXISTING LIGHT FIXTURE. FIXTURE TO BE REINSTALLED WHERE SHOWN UPON COMPLETION OF CEILING INSTALLATION.
 - ② DISCONNECT AND REMOVE EXISTING SPEAKER. SPEAKER TO BE REINSTALLED UPON COMPLETION OF CEILING INSTALLATION.
 - ③ DISCONNECT AND REMOVE EXISTING EXIT LIGHT FIXTURE. FIXTURE TO BE REINSTALLED UPON COMPLETION OF CEILING INSTALLATION.
 - ④ DISCONNECT AND REMOVE EXISTING SMOKE DETECTOR. DETECTOR TO BE REINSTALLED UPON COMPLETION OF CEILING INSTALLATION.
 - ⑤ PROVIDE A WEATHERPROOF 60 AMP FUSIBLE DISCONNECT FUSED AT 40 AMPS.
 - ⑥ DISCONNECT AND REMOVE EXISTING SPEAKER. SPEAKER TO BE REINSTALLED UPON COMPLETION OF CEILING INSTALLATION.
 - ⑦ DISCONNECT AND REMOVE EXISTING NURSE CALL DEVICE. DEVICE TO BE REINSTALLED UPON COMPLETION OF CEILING INSTALLATION.

1 THIRD FLOOR ELECTRICAL PLAN - 'A', 'B' AND 'C' WINGS
E3.1
0' 4' 8' 16'

\\projects\2013\13-027\Draw\13-027 E3.1.dwg, Jul 09, 2013 - 8:42am

Revisions	Date

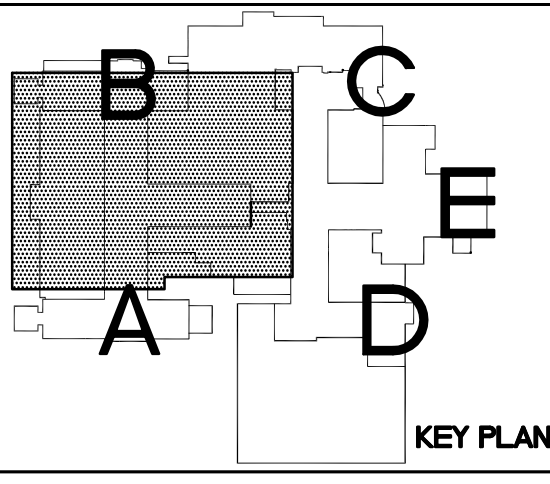


Dept. of Veterans Affairs
Health Care System
2101 Elm Street North
Fargo, ND 58102



IMAGE GROUP INC.
403 CENTER AVENUE, SUITE 300
MOORHEAD, MN 56560

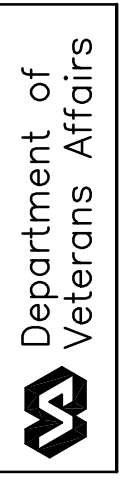
IMAGE GROUP INC., Architecture & Interiors
OBERMILLER NELSON ENGINEERING, Mechanical Engineers
MBN ENGINEERING, Electrical Engineers

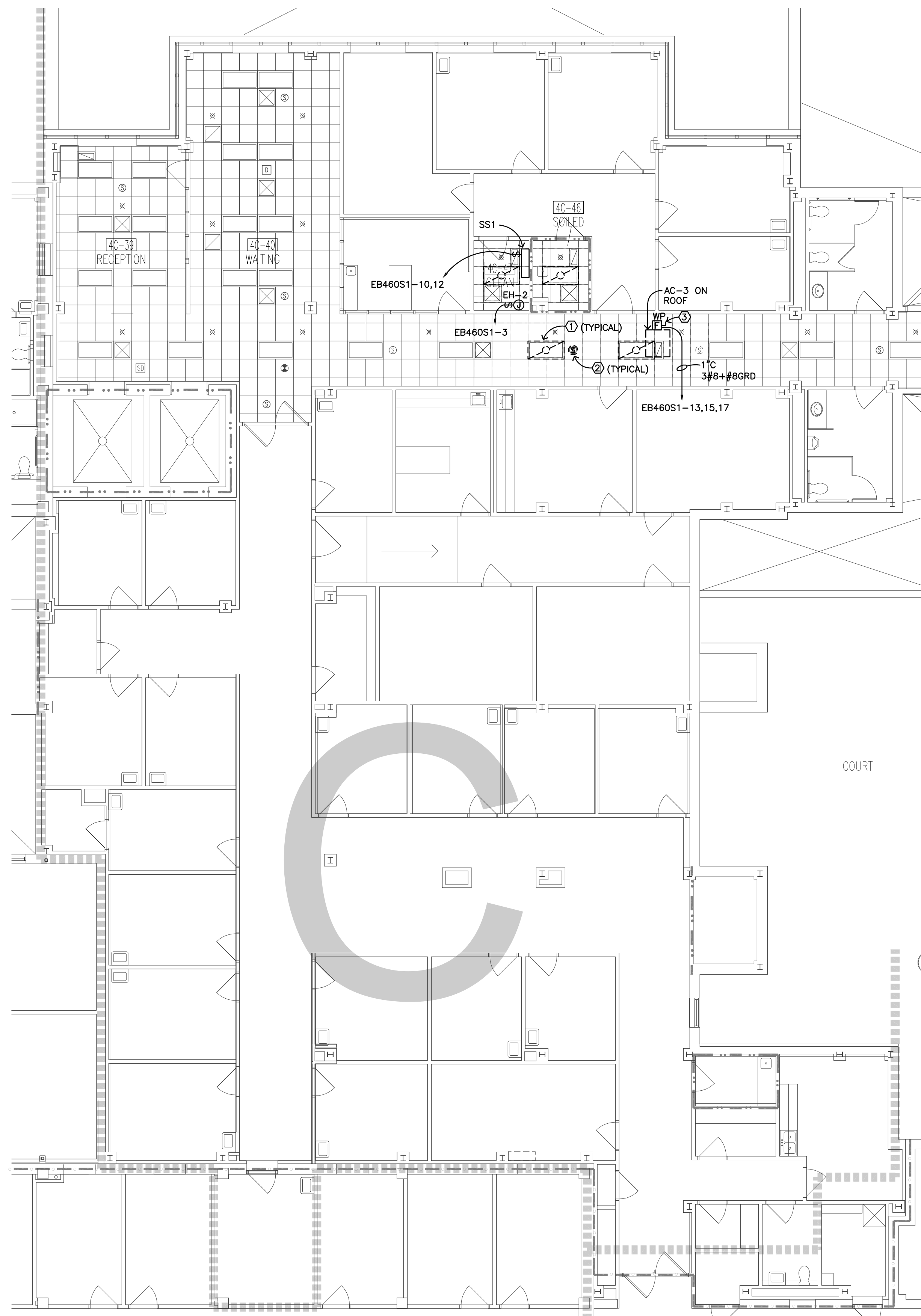


Drawing Title THIRD FLOOR ELECTRICAL PLAN - 'A', 'B' AND 'C' WINGS	
VA Project No. 437-13-103	Contract No. VA263-P-1217 VA263-C-
Building No. 1, 9, 46	AutoCAD File Name 13-027 E3.1.dwg

Project Title IMPROVE SPS/LOGISTICS STORAGE ROOM HVAC SYSTEMS		
Designed By MB	Checked By MB	Drawn By TP
Location FARGO VA HEALTH CARE SYSTEM FARGO, ND		

Date JULY 5, 2013
Scale: 1/8" = 1'-0"
Drawing No. E3.1
Dwg. 19 of 21





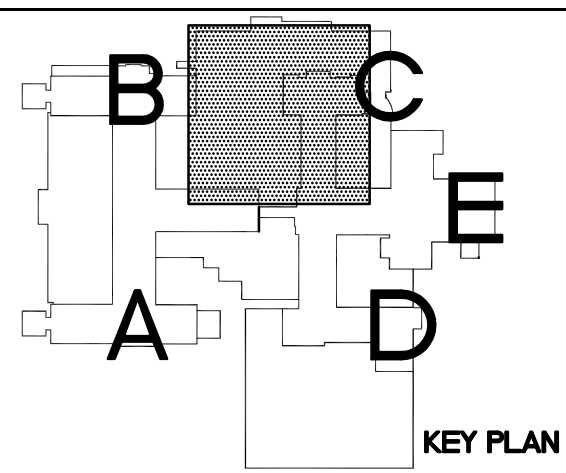
- PHASING NOTES:
1. ALL WORK IN FIRST FLOOR ROOMS EXCEPT 1B-42 AND 1A-72 SHALL OCCUR DURING OVERTIME AND/OR WEEKEND HOURS. SPACES SHALL BE CLEANED AND RETURNED TO WORKING ORDER PRIOR TO USE BY THE VA STAFF DURING NORMAL BUSINESS HOURS.
 2. CAREFULLY COORDINATE WITH THE OWNER A MINIMUM OF 2 WEEKS IN ADVANCE PRIOR TO WORK COMMENCING.
 3. REFER TO SHEET X1 GENERAL NOTES AND ARCHITECTURAL SHEETS FOR SPECIFIC PHASING INFORMATION FOR INDIVIDUAL SPACES.

- PLAN NOTES:
- ① DISCONNECT AND REMOVE EXISTING LIGHT FIXTURE. FIXTURE TO BE REINSTALLED WHERE SHOWN UPON COMPLETION OF CEILING INSTALLATION.
 - ② DISCONNECT AND REMOVE EXISTING SPEAKER. SPEAKER TO BE REINSTALLED UPON COMPLETION OF CEILING INSTALLATION.
 - ③ PROVIDE A WEATHERPROOF 60 AMP FUSIBLE DISCONNECT FUSED AT 40 AMPS.

1
E4.1

FOURTH FLOOR ELECTRICAL PLAN - 'C' WING

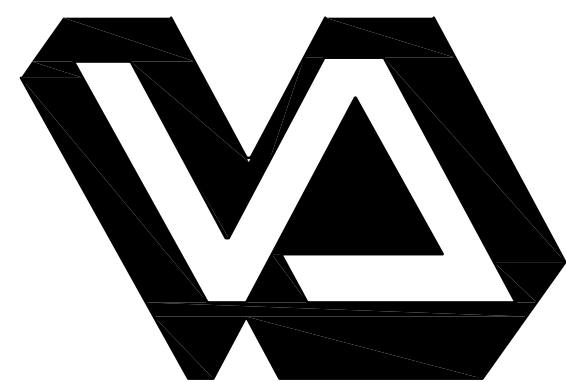
0' 4' 8' 16'



Drawing Title FOURTH FLOOR ELECTRICAL PLAN - 'C' WING	
VA Project No. 437-13-103	Contract No. VA263-P-1217 VA263-C-
Building No. 1, 9, 46	AutoCAD File Name 13-027 E41.dwg

Project Title IMPROVE SPS/LOGISTICS STORAGE ROOM HVAC SYSTEMS		
Designed By MB	Checked By MB	Drawn By TP
Location FARGO VA HEALTH CARE SYSTEM FARGO, ND		

Date JULY 5, 2013
Scale: 1/8" = 1'-0"
Drawing No. E4.1
Dwg. 20 of 21



Dept. of Veterans Affairs
Health Care System
2101 Elm Street North
Fargo, ND 58102



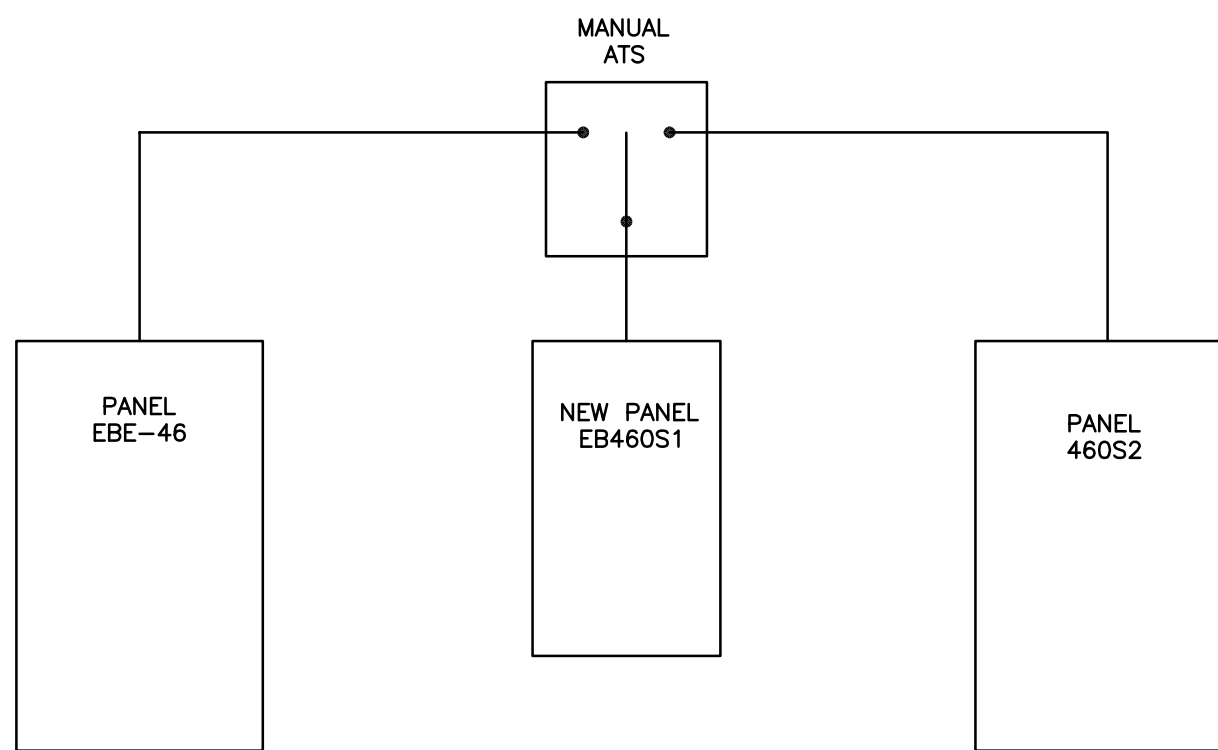
IMAGE GROUP INC.
403 CENTER AVENUE, SUITE 300
MOORHEAD, MN 56560

IMAGE GROUP INC., Architecture & Interiors
OBERMILLER NELSON ENGINEERING, Mechanical Engineers
MBN ENGINEERING, Electrical Engineers



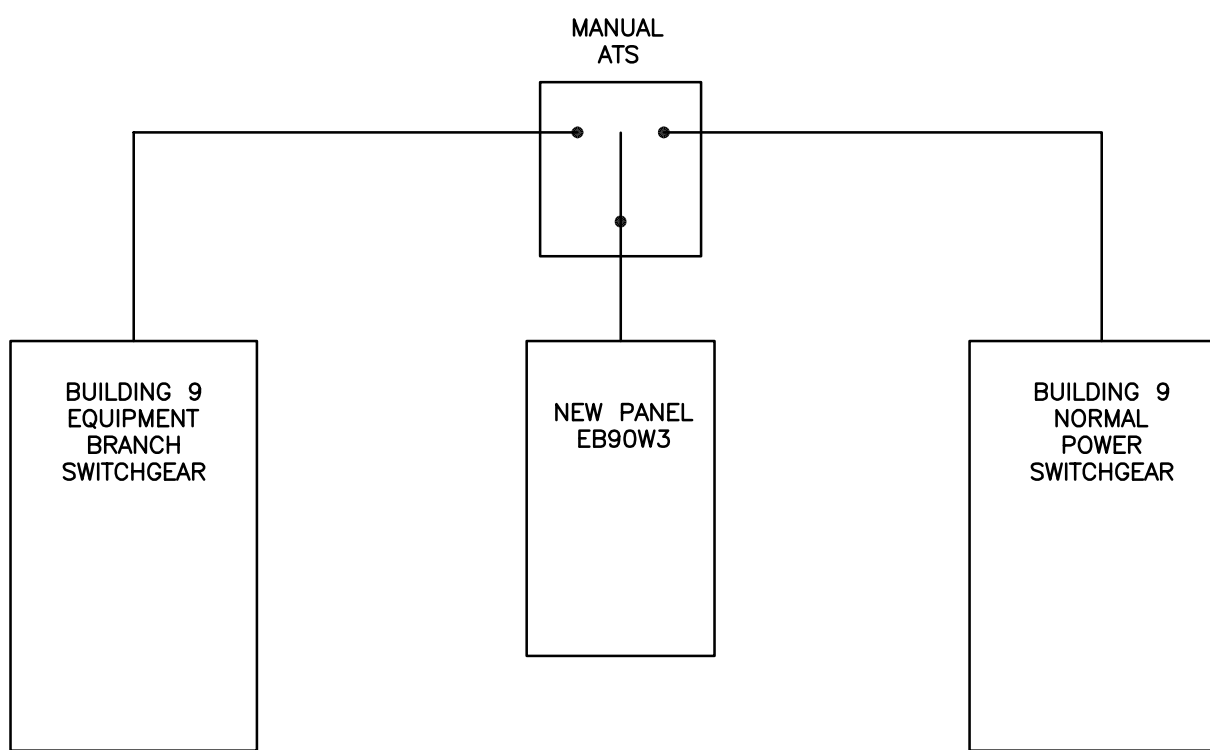
Department of
Veterans Affairs

PANELBOARD LOAD SCHEDULE																			
PANEL: EB460S1			MAIN: 208Y/120, 3 PH., 4W.			ENCLOSURE: NEMA 1			LOCATION: BA-01A										
RATING:			AIC RATING:			MOUNTING: SURFACE			FED FROM: EBE-46										
CKT #	TRIP AMPS	POLE	LOAD IN VOLT-AMPERES				LOAD DESCRIPTION	PH	LOAD IN VOLT-AMPERES				LOAD DESCRIPTION	PH	TRIP AMPS	POLE	CKT #		
			LIGHTING	RECPT	MTRSEQUIP	KITCHEN	HEAT/AC			LIGHTING	RECPT	MTRSEQUIP	KITCHEN	HEAT/AC					
1	20	1			1900				10-45 EH-2	A		10-45A SS			42		15		
3	20	1			1900				40-40 EH-2	B					42		2		
5	50				7740				AC-2	C		20-49 SS			42		15		
7					7740					A					42		2		
9		3			7740					B		40-47 SS			42		10		
11	20	1			1900				20-49 EH-2	C					42		12		
13	35				3600				AC-3	A		30-62 SS			42		15		
15					3600				ON ROOF	B					42		2		
17		3			3600					C		30-62 EH-2			1900		18		
19	20	1								A					20	1	20		
21	20	1								B					20	1	22		
23	20	1								C					20	1	24		
25	20	1								A					20	1	26		
27	20	1								B					20	1	28		
29	20	1								C					20	1	30		
31	20	1								A					20	1	32		
33	20	1								B					20	1	34		
35	20	1								C					20	1	36		
37	20	1								A					20	1	38		
39	20	1								B					20	1	40		
41	20	1								C					20	1	42		
LOAD CALCULATIONS																			
LOAD TYPE		VA / PHASE			TOTAL VA		DEMAND FACTOR		DIVERSIFIED LOAD		NOTES:								
		A	B	C															
LIGHTING		0	0	0	0		1.00		0										
RECEPTACLES		0	0	0	0		0.50		0										
MOTORS & EQUIP		13366	13366	15224	41956		0.90		37760										
KITCHEN EQUIP.		0	0	0	0		0.65		0										
HEAT / AC		0	0	0	0		0.90		0										
LARGEST MOTOR							0.25		0										
TOTAL AMPS:		105			TOTAL VA:		37,760												



1
E5.1 PARTIAL ELECTRICAL ONE-LINE DIAGRAM - BUILDING 46
NO SCALE

PANELBOARD LOAD SCHEDULE																			
PANEL: EBB9W3			MAIN: 208Y/120, 3 PH., 4W.					ENCLOSURE: NEMA 1			LOCATION: BB-34								
RATING:			AIC RATING:					MOUNTING: SURFACE			FED FROM: BLDG 9 SWBD								
CKT #	TRIP AMPS	POLE	LOAD IN VOLT-AMPERES				LOAD DESCRIPTION	PH	LOAD IN VOLT-AMPERES				LOAD DESCRIPTION	PH	TRIP AMPS	POLE	CKT #		
			LIGHTING	RECPT	MTRSEQUIP	KITCHEN	HEAT/AC			LIGHTING	RECPT	MTRSEQUIP	KITCHEN	HEAT/AC					
1	15	2			300			BB-15,24 SS	A			28-80 EH-2			20	1	2		
3					300				B						15		4		
5	35				3600			AC-1 ROOF	C						600		6		
7					3600				A			AC-1 ROOF			35		8		
9		3			3600				B							2	10		
11	15				85			38-33 SS	C							3	12		
13		2			85				A			AC-1 ROOF			35		14		
15	20	1			1900			38-31 EH-2	B							2	16		
17	20	1			1900			3A-31 EH-2	C							3	18		
19	20	1							A						20	1	20		
21	20	1							B						20	1	22		
23	20	1							C						20	1	24		
25	20	1							A						20	1	26		
27	20	1							B						20	1	28		
29	20	1							C						20	1	30		
31	20	1							A						20	1	32		
33	20	1							B						20	1	34		
35	20	1							C						20	1	36		
37	20	1							A						20	1	38		
39	20	1							B						20	1	40		
41	20	1							C						20	1	42		
LOAD CALCULATIONS																		NOTES:	
LOAD TYPE		VA / PHASE			TOTAL VA		DEMAND FACTOR		DIVERSIFIED LOAD										
		A	B	C															
LIGHTING		0	0	0	0	1.00	0												
RECEPTACLES		0	0	0	0	0.50	0												
MOTORS & EQUIP		13085	13600	13385	40070	0.90	36063												
KITCHEN EQUIP.		0	0	0	0	0.65	0												
HEAT / AC		0	0	0	0	0.90	0												
LARGEST MOTOR								0.25											
TOTAL AMPS:								100		TOTAL VA:		36,063							



1
E5.1 PARTIAL ELECTRICAL ONE-LINE DIAGRAM - BUILDING 9
NO SCALE

PANELBOARD LOAD SCHEDULE																			
PANEL: EB10C2			MAIN: 208Y/120, 3 PH., 4W.					ENCLOSURE: NEMA 1			LOCATION: BE-99								
RATING:			AIC RATING:					MOUNTING: SURFACE			FED FROM: EB10C1								
CKT #	TRIP AMPS	POLE	LOAD IN VOLT-AMPERES					PH	LOAD IN VOLT-AMPERES					PH	TRIP AMPS	POLE	CKT #		
			LIGHTING	RECPT	MTRSEQUIP	KITCHEN	HEAT/AC		LOAD DESCRIPTION	HEAT/AC	KITCHEN	RECPT	LIGHTING						
1	15				190			BE-30 SS	A	BE-09 EH-1			1300		20	2	4		
3	15	2			190			1E-12 SS	B	2C-90 EH-2			1900		20	1	6		
7	15	2			170			A	2C-90 SS				42		15	8			
9	20	1						B					42		2	10			
11	20	1						C							20	12			
13	20	1						A							20	1	14		
15	20	1						B							20	1	16		
17	20	1						C							20	1	18		
19	20	1						A							20	1	20		
21	20	1						B							20	1	22		
23	20	1						C							20	1	24		
25	20	1						A							20	1	26		
27	20	1						B							20	1	28		
29	20	1						C							20	1	30		
31	20	1						B							20	1	32		
33	20	1						C							20	1	34		
35	20	1						B							20	1	36		
37	20	1						A							20	1	38		
39	20	1						B							20	1	40		
41	20	1						C							20	1	42		
LOAD CALCULATIONS																			
LOAD TYPE	VA / PHASE			TOTAL VA	DEMAND FACTOR	DIVERSIFIED LOAD	NOTES:												
	A	B	C																
LIGHTING	0	0	0	0	1.00	0													
RECEPTACLES	0	0	0	0	0.50	0													
MOTORS & EQUIP.	1702	1532	2070	5304	0.90	4774													
KITCHEN EQUIP.	0	0	0	0	0.65	0													
HEAT / AC	0	0	0	0	0.90	0													
LARGEST MOTOR							0.25 0												
TOTAL AMPS:				13	TOTAL VA:		4,774												