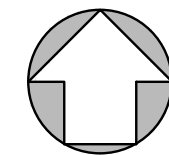


- LEGEND MATERIALS AND SYMBOLS**
- NO SCALE
Dwg # 130255-R1003.DWG
- | | | | |
|--|--|--|-------------------------------------|
| | BRICK (SECTION) | | ITEM TO BE REMOVED AND DISPOSED OF |
| | BRICK (ELEVATION) | | PLYWOOD |
| | CONCRETE | | WOOD (NEW CONTINUOUS) |
| | CMU (SECTION) | | WOOD (EXISTING CONTINUOUS) |
| | CMU (ELEVATION) | | GYPSUM BOARD |
| | FILL GROUT MORTAR | | INSULATION (RIGID) |
| | ROOF DRAIN | | SCUPPER/OVERFLOW SCUPPER |
| | NEW ROOF DRAIN | | ACCESS DOOR |
| | HOT STACK | | INDICATES DIRECTION OF VIEW |
| | PIPE VENT | | SECTION NUMBER |
| | PITCH POCKET | | SHEET WHERE SECTION IS DRAWN |
| | PIPE PENETRATION | | INDICATES DIRECTION OF VIEW |
| | CHASE BOX | | ELEVATION NUMBER |
| | LIGHTENING ROD GROUND | | SHEET WHERE ELEVATION IS DRAWN |
| | GLASS PIPE PENETRATION | | DETAIL NUMBER |
| | TCF ROOF CORE SAMPLE LOCATION AND NUMBER | | SHEET WHERE DETAIL IS DRAWN |
| | TIE-OFF LOCATION | | INDICATES AREA SHOWN IN DETAIL |
| | FAN/MECHANICAL UNIT | | ITEMS TO BE REMOVED AND DISPOSED OF |
| | ROOF HATCH | | |
| | LIGHTENING ARREST TERMINAL | | |
| | LIGHTENING ARREST CABLE | | |

- ABBREVIATIONS**
- NO SCALE
Dwg # 130255-R1004.DWG
- | | | | |
|--------|-----------------------|---------|-------------------------|
| ALT | ALTERNATE | O/C | ON CENTER |
| APPROX | APPROXIMATE | OH | OPPOSITE HAND |
| AVG | AVERAGE | OS | OVERFLOW SCUPPER |
| BLDG | BUILDING | PEN | PENETRATION |
| BLK | BLOCKING | PLY | PLYWOOD |
| CL | CENTERLINE | PP | PITCH POCKET |
| CMU | CONCRETE MASONRY UNIT | PREFAB | PREFABRICATION |
| COORD | COORDINATE | PT | PRESSURE TREATED |
| CONC | CONCRETE | PV | PIPE VENT |
| CONT | CONTINUOUS | RD | ROOF DRAIN |
| CTD | COATED | REG | REGULAR |
| CTR | CENTER | REINF | REINFORCED; REINFORCING |
| DM | DIMENSION | REM | REMAINING; REMAINDER |
| DR | DRAIN | REQ'D | REQUIRED |
| DWG(S) | DRAWING(S) | SC | SCUPPER |
| EA | EACH | SECT | SECTION |
| ELEV | ELEVATION; ELEVATOR | SIM | SIMILAR |
| EQ | EQUAL | SMACNA | SHEET METAL AND AIR |
| EST | ESTIMATE | SPEC(S) | SPECIFICATIONS |
| EXIST | EXISTING | SS | STAINLESS STEEL |
| EXP JT | EXPANSION JOINT | STD | STANDARD |
| FD | FLOOR DRAIN | SYS | SYSTEM |
| IN | INCH/INCHES | TYP | TYPICAL |
| INCL | INCLUDE | UNO | UNLESS NOTED OTHERWISE |
| MANUF | MANUFACTURER | VERT | VERTICAL |
| MATL | MATERIAL | W/ | WITH |
| MECH | MECHANICAL | W/O | WITHOUT |
| MEMB | MEMBRANE | YD | YARD |
| MIN | MINIMUM | | |
| MISC | MISCELLANEOUS | | |
| N/A | NOT APPLICABLE | X | BY |
| NIC | NOT IN CONTRACT | | |
| NTS | NOT TO SCALE | | |

1 ROOF PLAN - DEMOLITION
R1.1
1/4" = 1'-0"
Dwg # 130255-R0002.DWG



FOR CONSTRUCTION

DESTROY ALL
PREVIOUS COPIES

Mark	Date	Revision



Project Number: 130255
File Name: 130255-R0101
Printed: 10/15/2013 1:25 PM



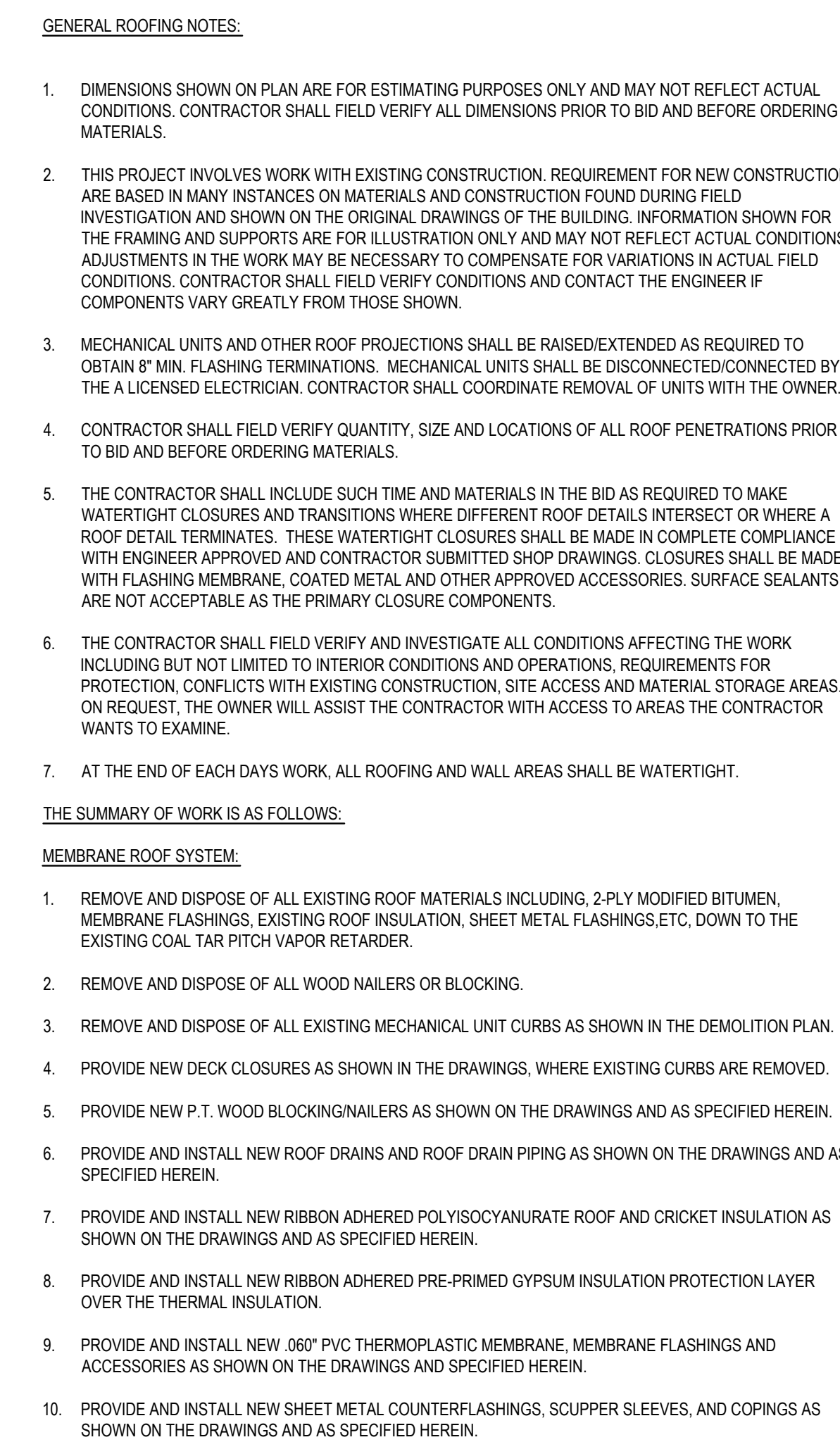
REV.	DATE

Requestor:	Date:	Chief of Staff:	Date:
Chief of Service:	Date:	Asst. Med. Ctr. Dir.:	Date:
APPROVED BY:	Date:		
MEDICAL CENTER DIRECTOR			

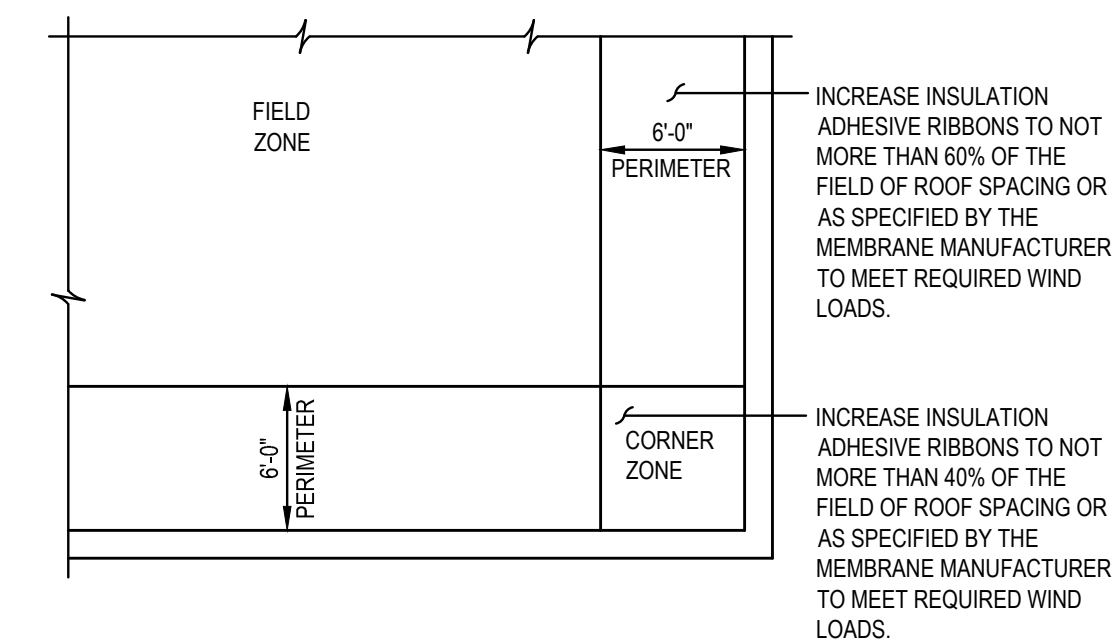
Project Title:	RENOVATE BUILDING 6 FOR RESEARCH AND ANCILLARY SUPPORT
Building No.:	
Designed By:	BDC
Drawn By:	LIS
Checked By:	BDC
Location:	VA Medical Center Durham, NC

Date:	10-09-2013
Project No.:	555-13-221
Project Drawing No.:	
DRAWING NO.:	R1.1
Sheet	of




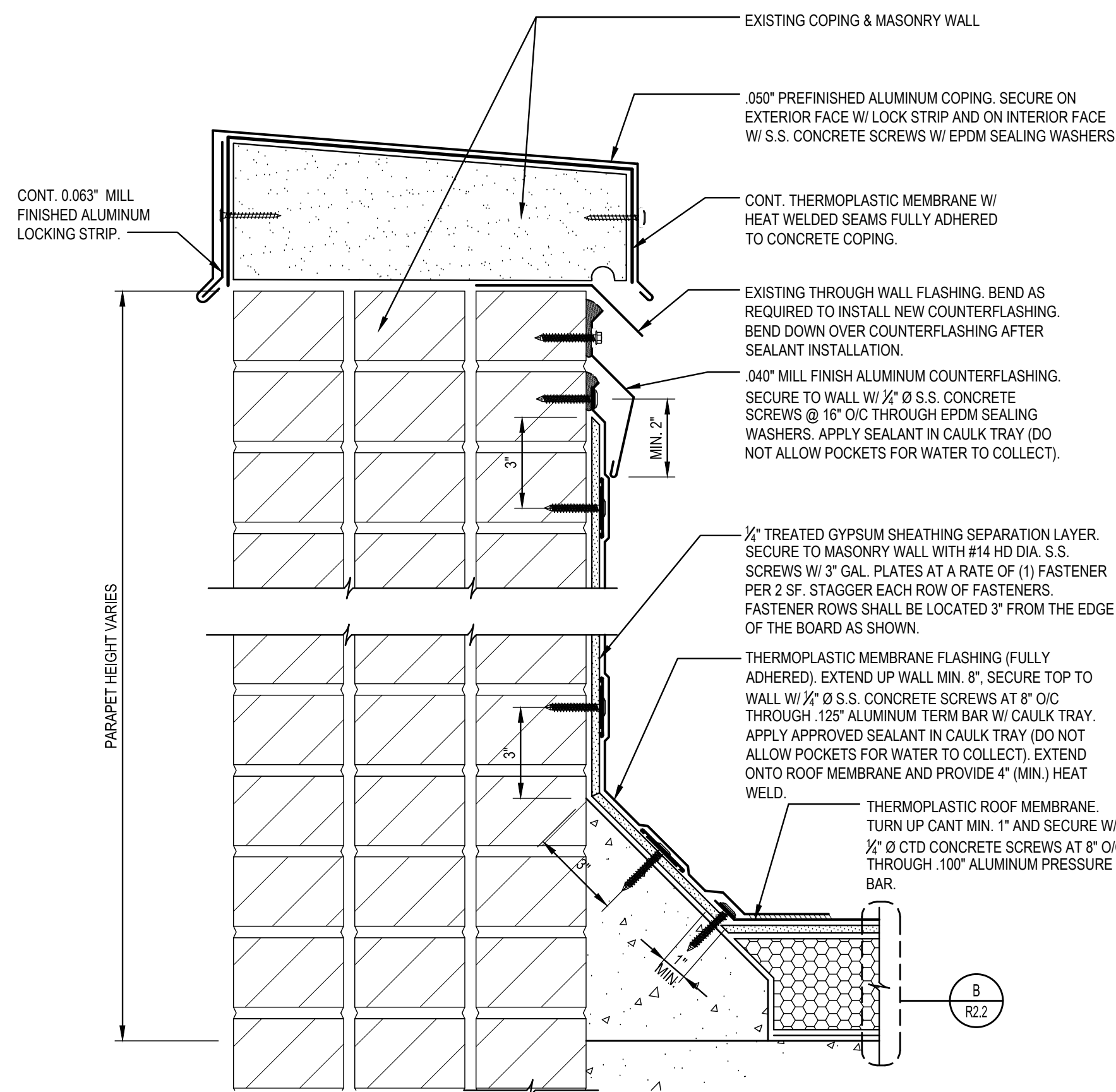


NO SCALE
Dwg.# 130255-R1001.DWG

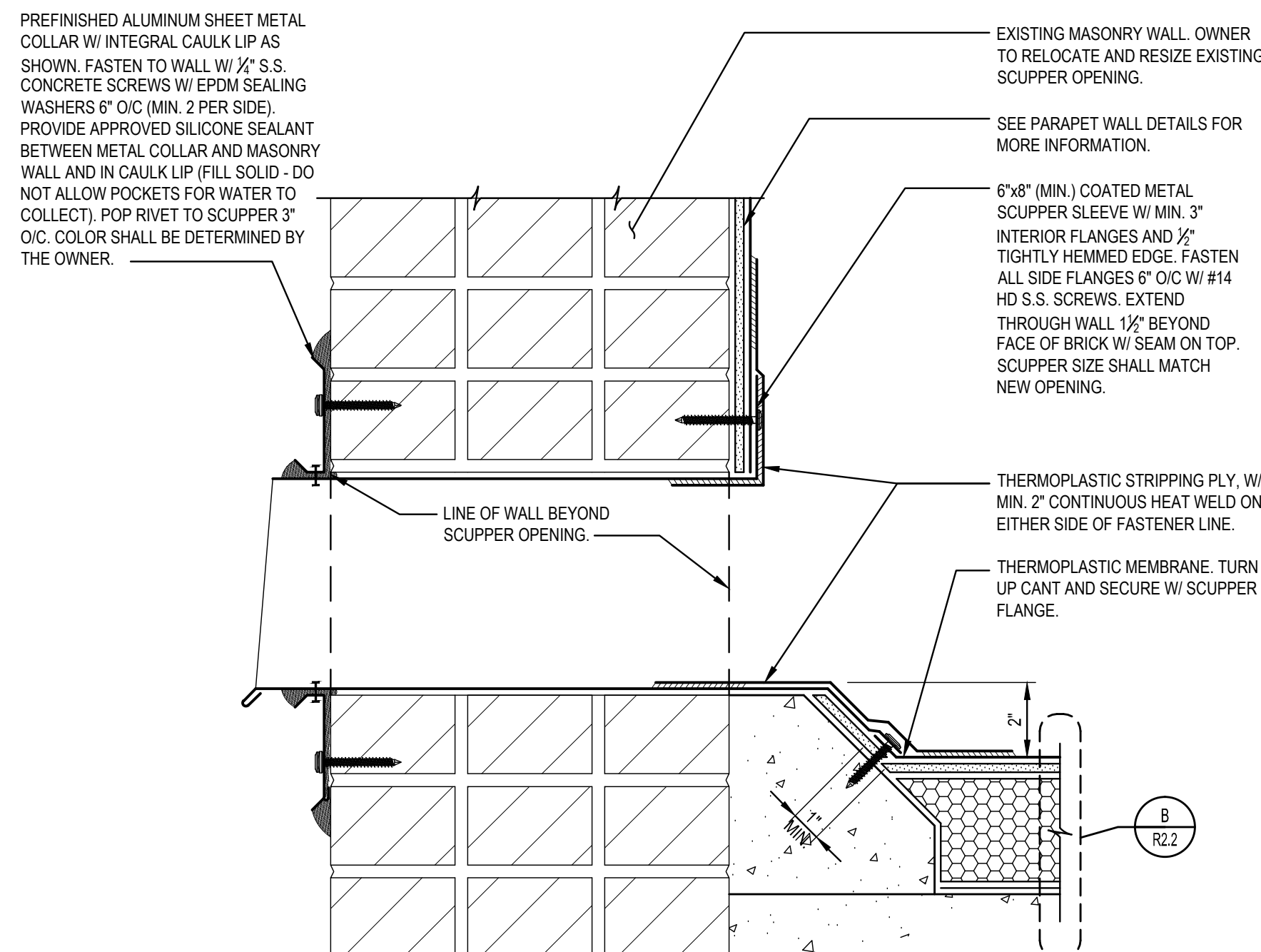


NO SCALE
Dwg.# 130255-B2004 DWG

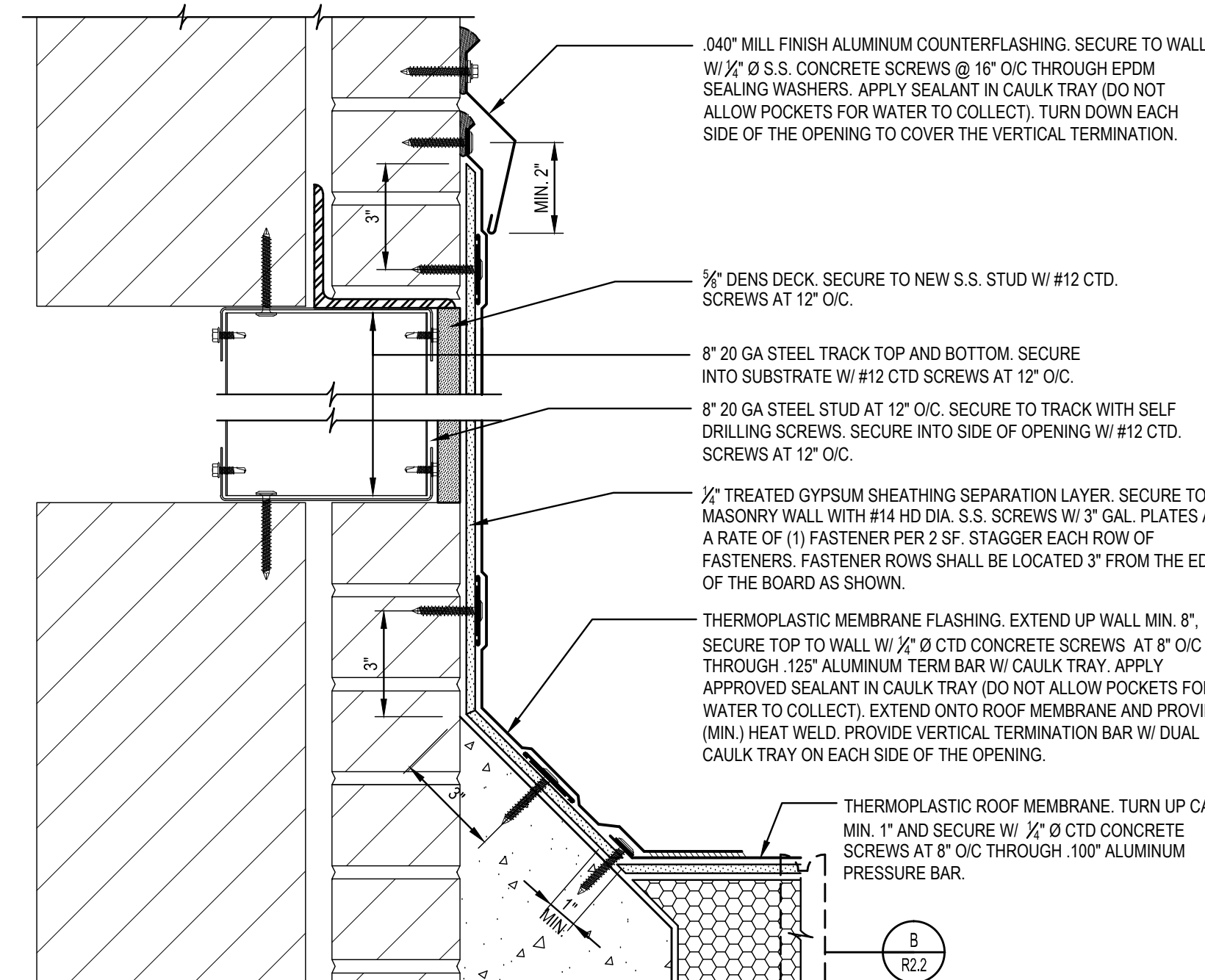
Date 10-09-2013	 DEPARTMENT OF VETERAN AFFAIRS
Project No. 558-13-221	
Project Drawing No.	
DRAWING NO. R1.2	
Sheet	Of



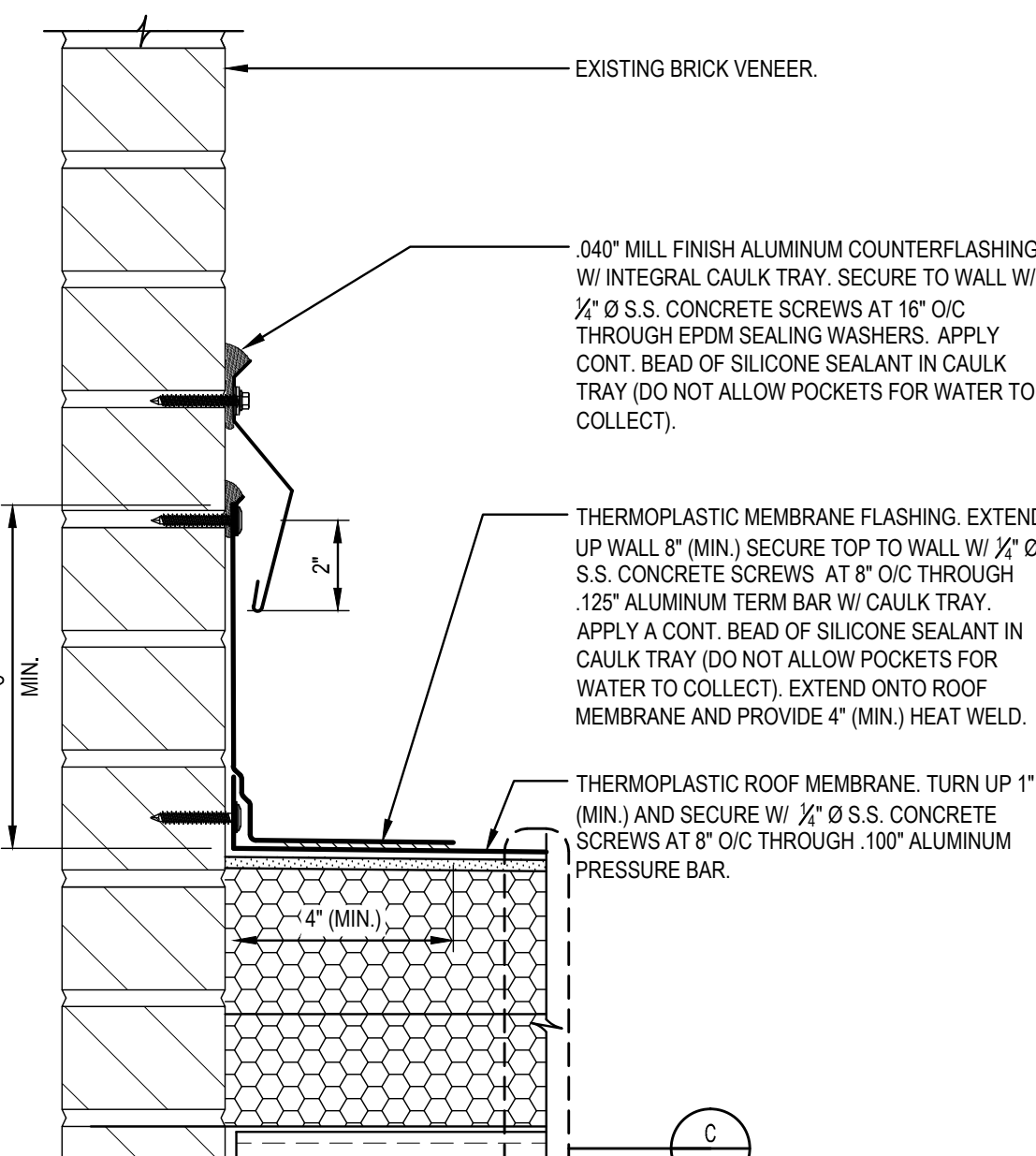
1 SECTION
R2.1
3\"/>



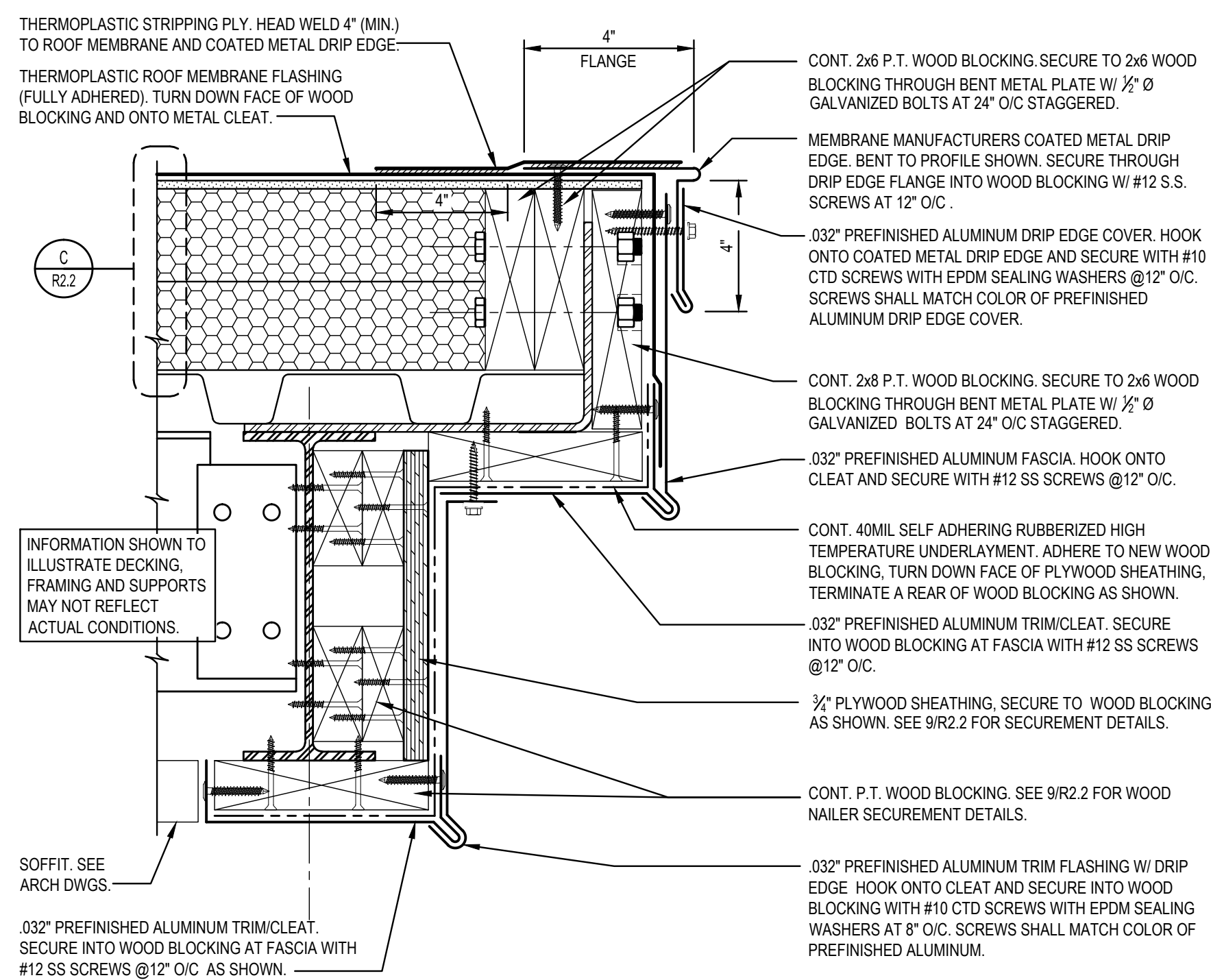
2 TYPICAL DETAIL
R2.1
3\"/>



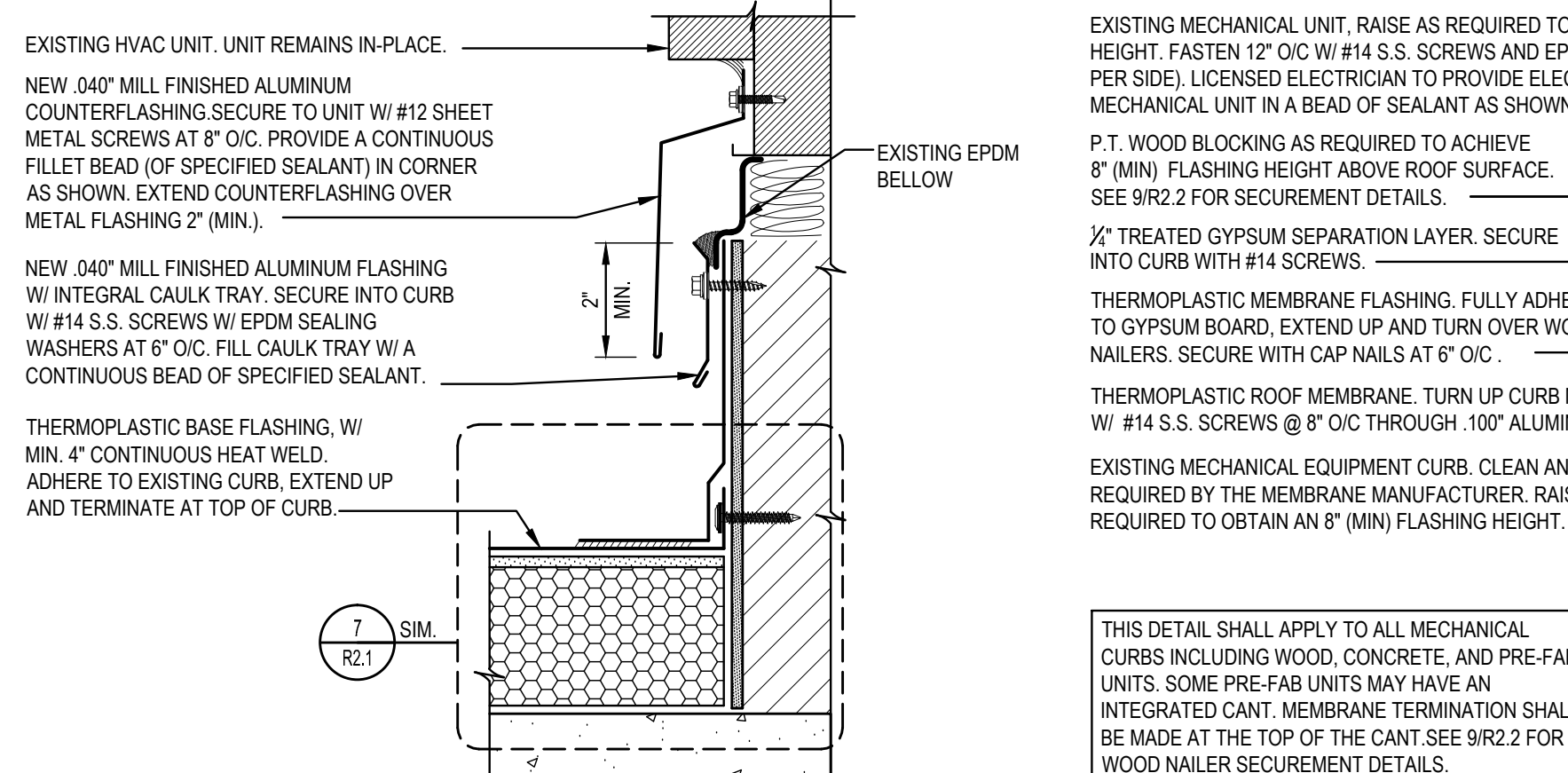
3 SECTION AT CHASE
R2.1
3\"/>



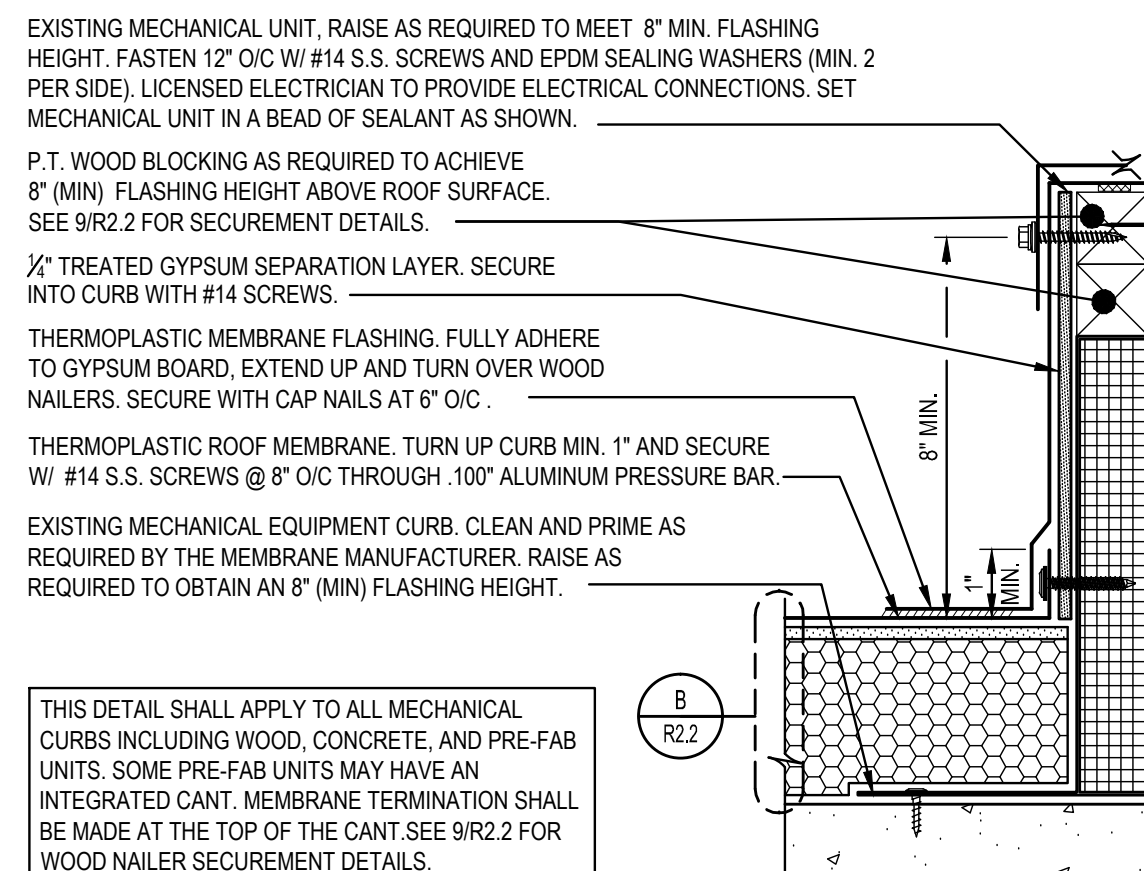
4 SECTION
R2.1
3\"/>



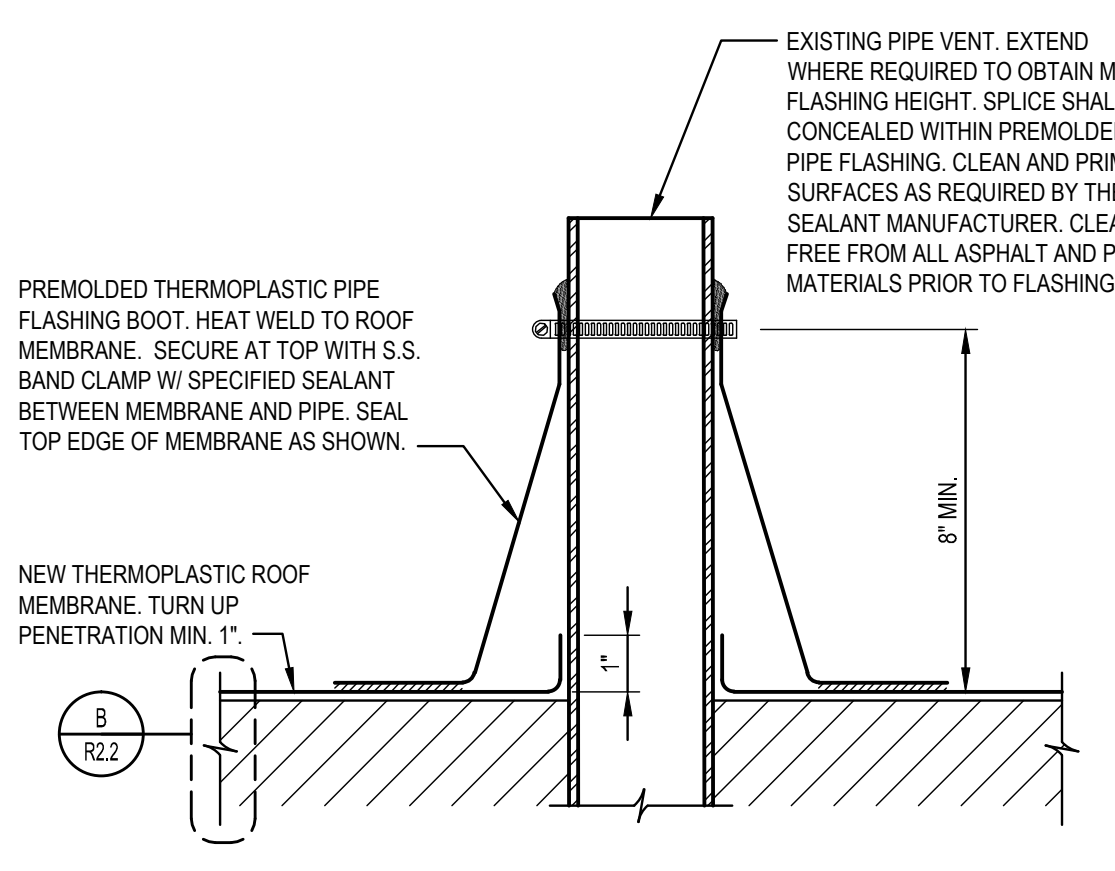
5 SECTION
R2.1
3\"/>



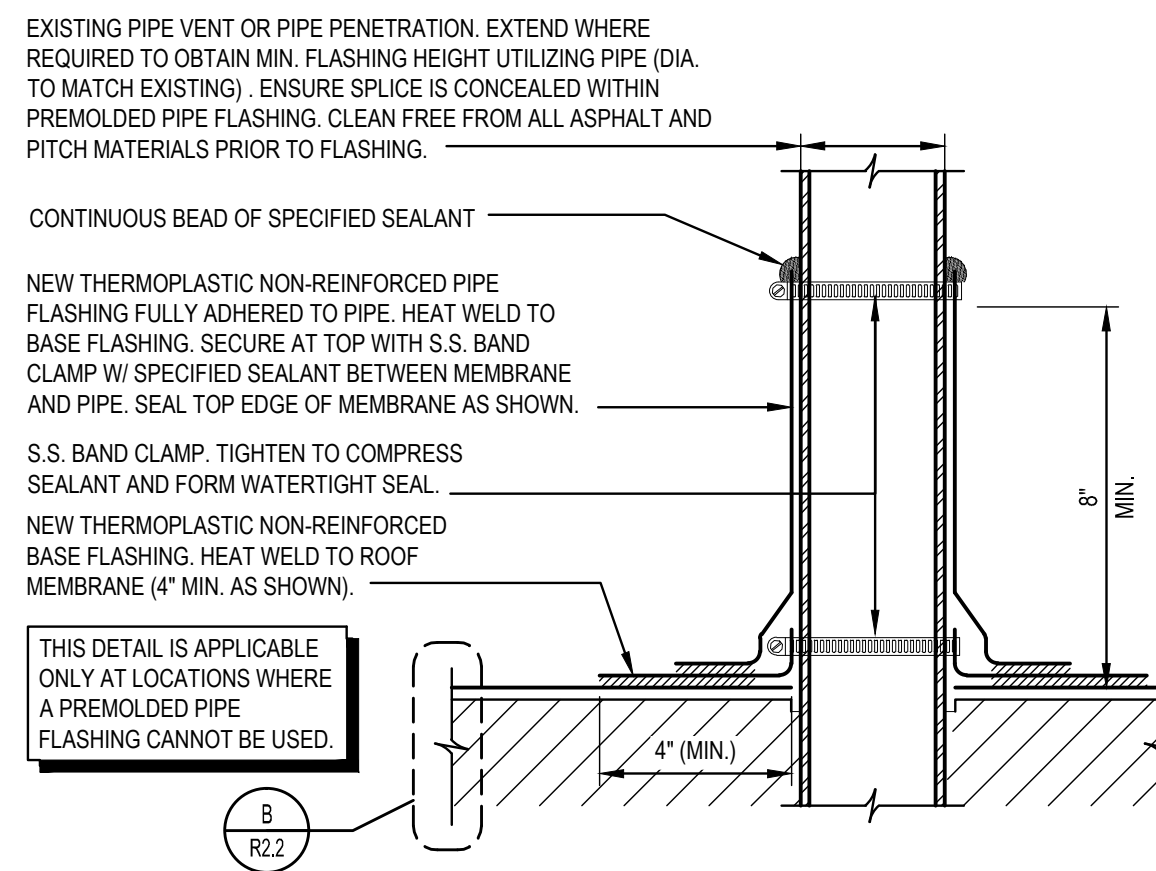
6 SECTION
R2.1
3\"/>



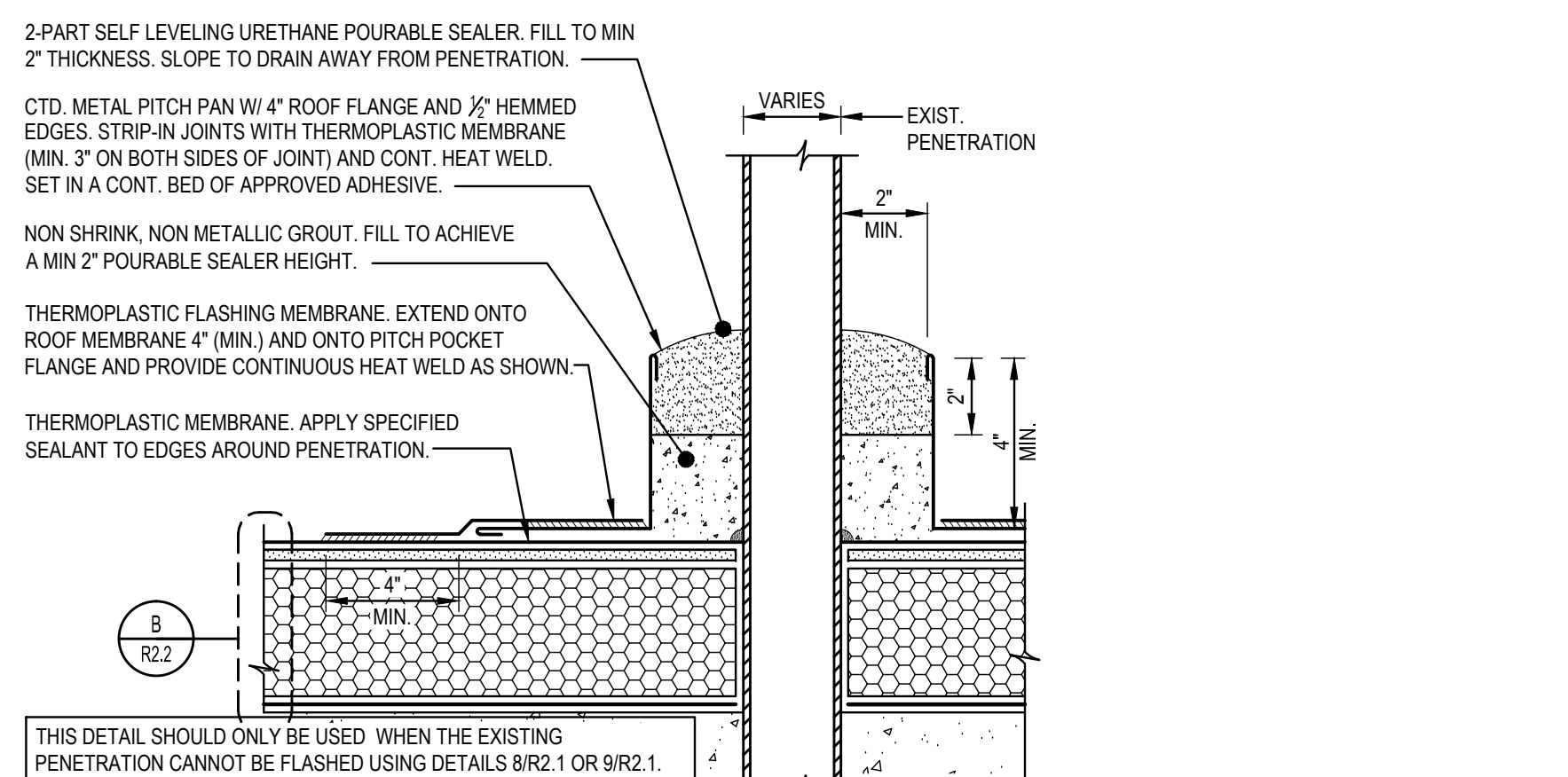
7 TYPICAL CURB DETAIL
R2.1
3\"/>



8 TYPICAL DETAIL
R2.1
3\"/>



9 TYPICAL DETAIL
R2.1
3\"/>

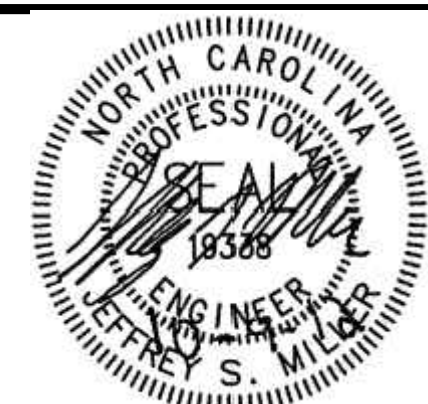


10 TYPICAL DETAIL
R2.1
3\"/>

FOR CONSTRUCTION

DESTROY ALL
PREVIOUS COPIES

Mark	Date	Revision



REV.	DATE	DESCRIPTION

Requestor:	Date:	Chief of Staff:	Date:

Building No.	Designed By:	Drawn By:	Checked By:
	BDC	LIS	BDC

Date:	Project No.:	Project Drawing No.:
10-09-2013	558-13-221	

DRAWING NO.
R2.1

Sheet of



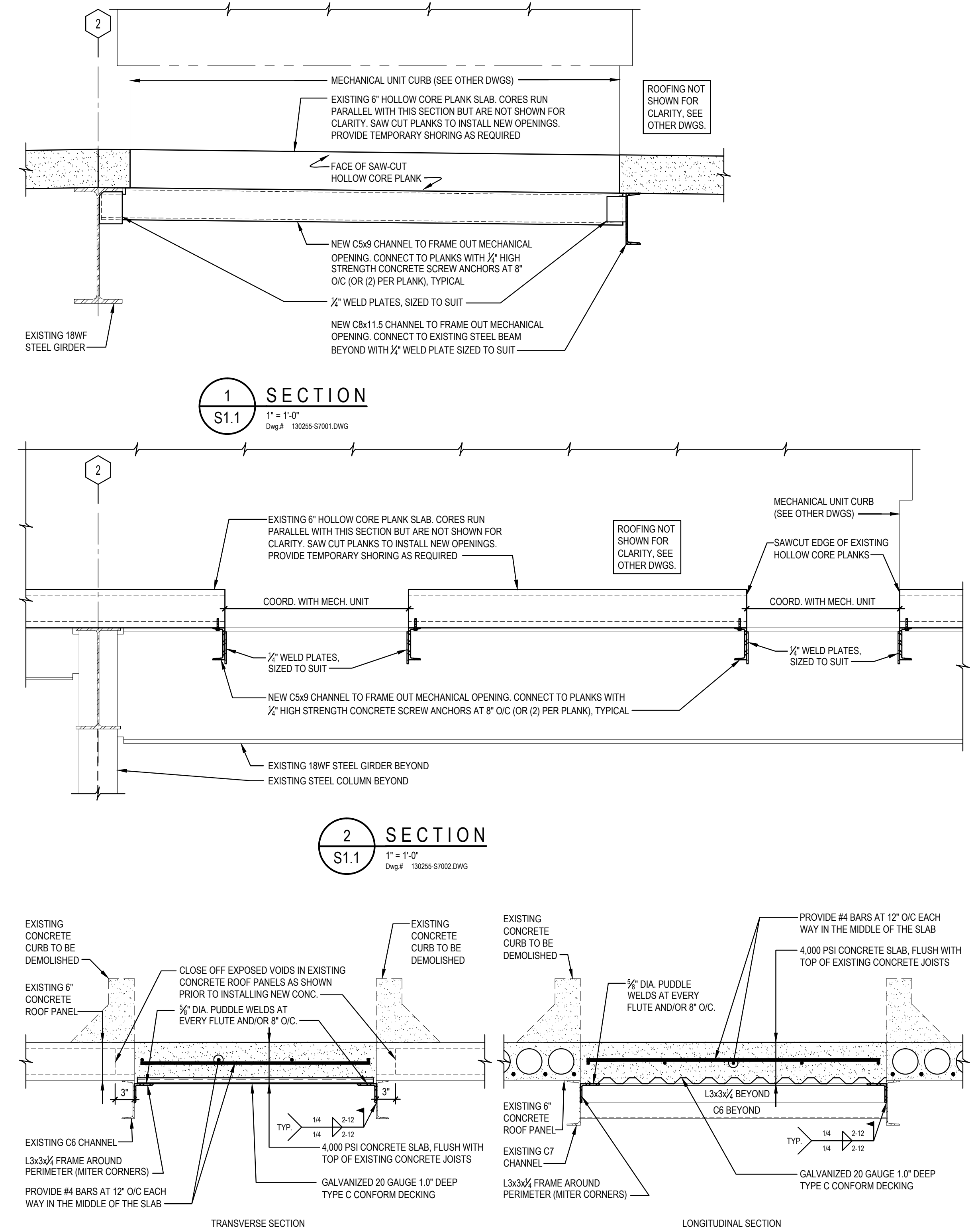


EVERY SUBSTRATE CONDITION MAY NOT APPLY. SEE APPLICABLE SECTIONS FOR SPECIFIED SUBSTRATE AND USE SECUREMENT DETAIL THAT APPLIES.

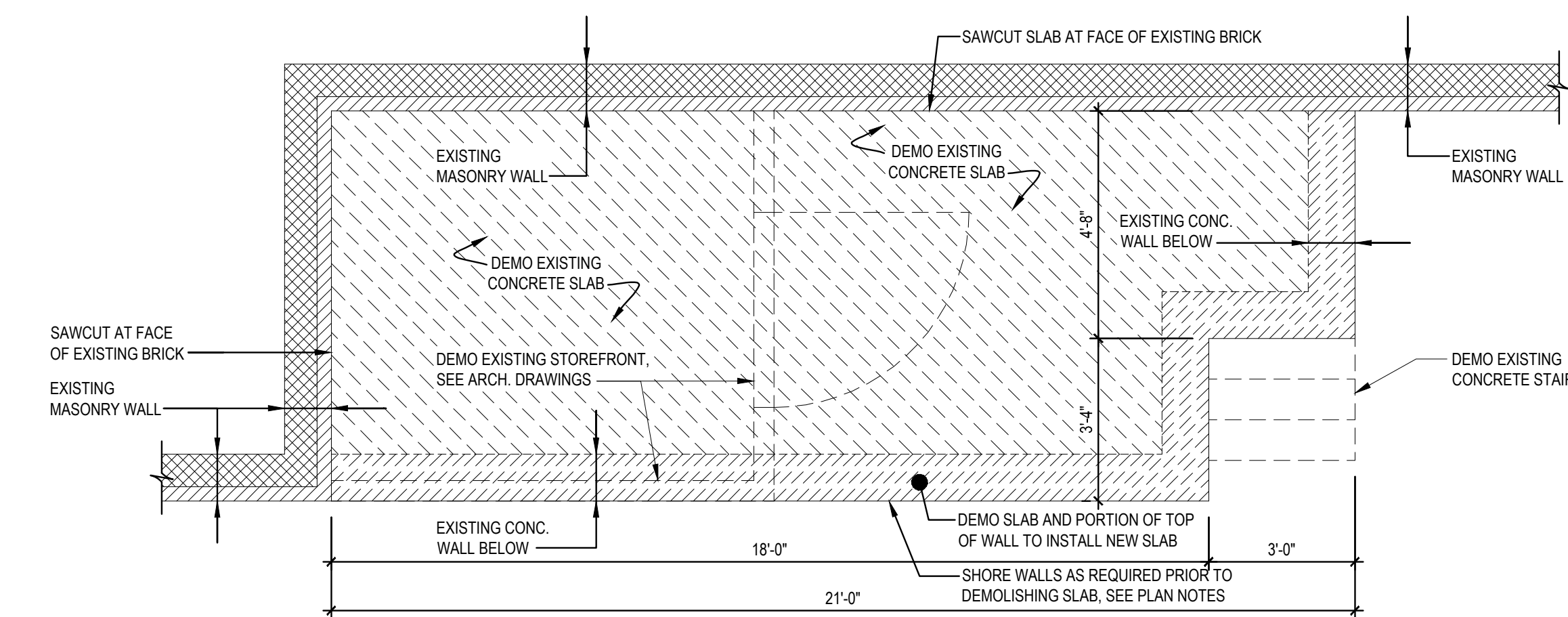
FOR CONSTRUCTION

DESTROY ALL
PREVIOUS COPIES

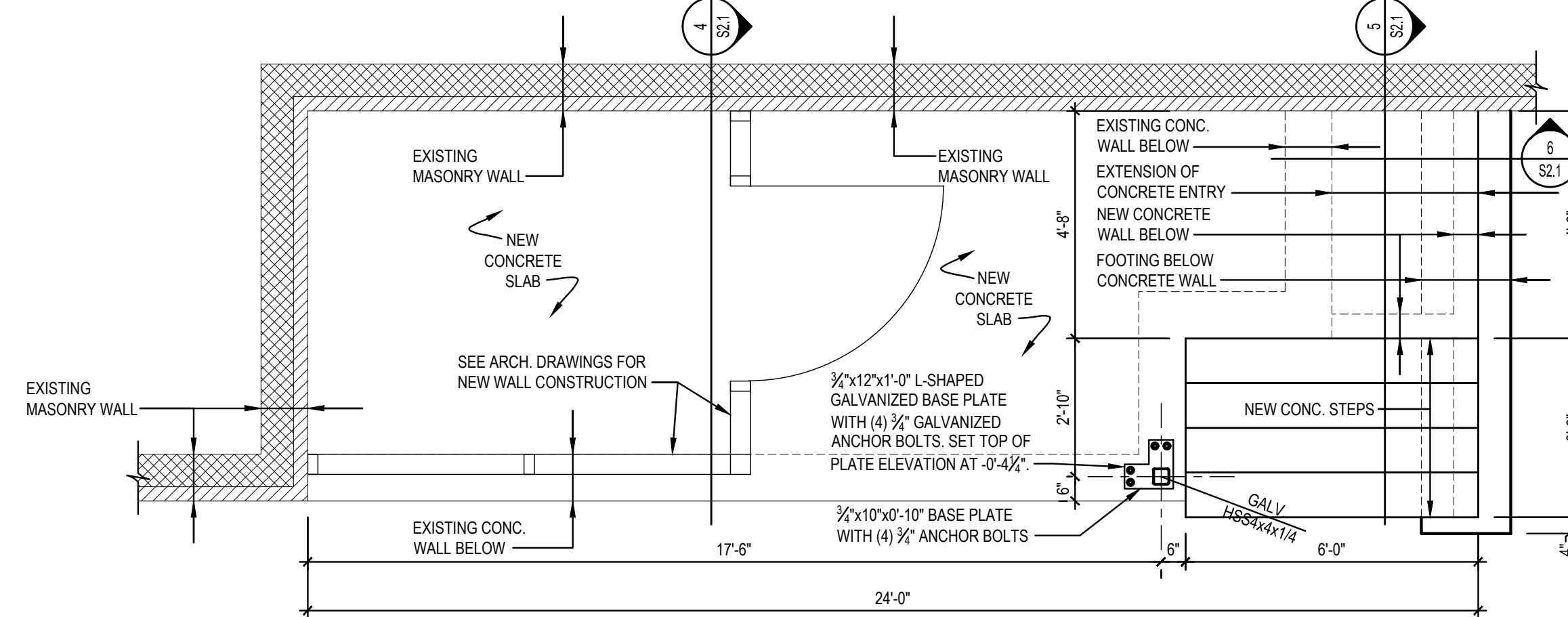
DEPARTMENT OF
VETERAN AFFAIRS



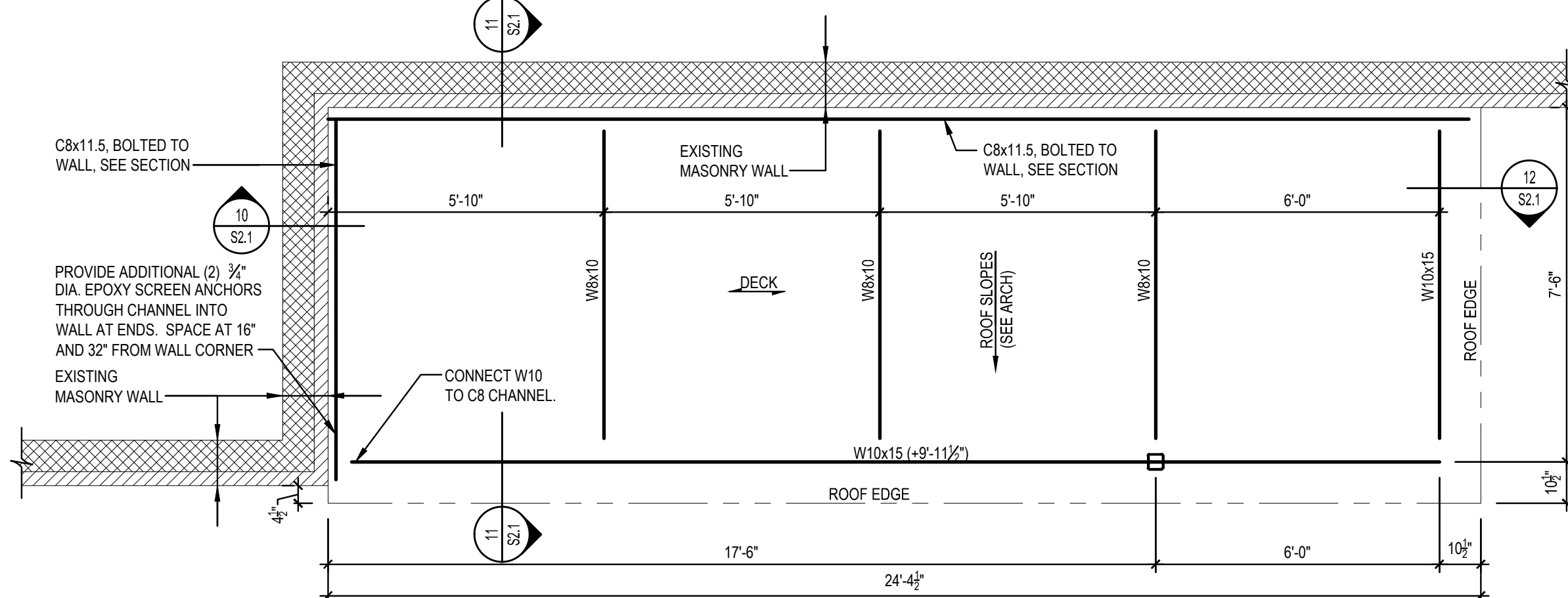
DEPARTMENT OF
VETERAN AFFAIRS



1 PARTIAL PLAN - EXISTING/DEMOLITION AT EAST ENTRY
S2.1
3/8" = 1'-0"
Dwg # 130255-53001.DWG



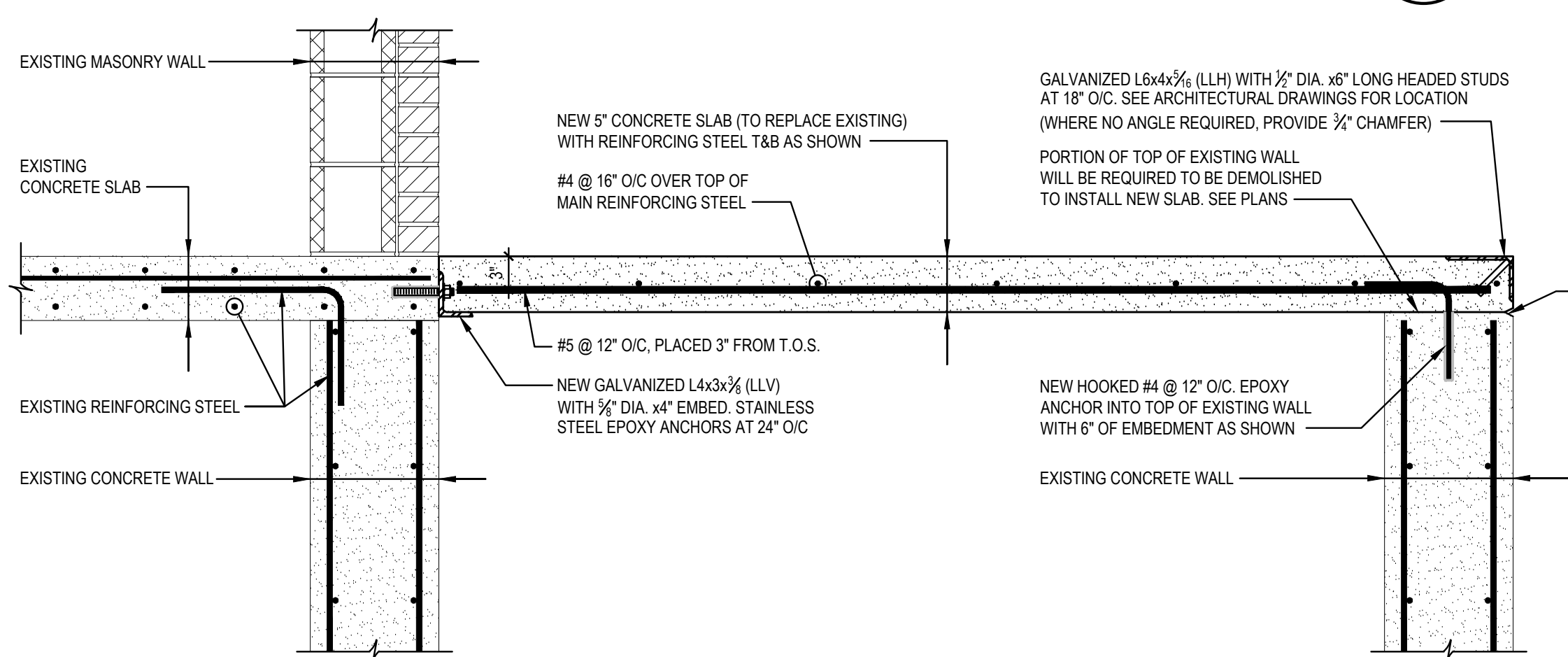
2 PARTIAL PLAN - FOUNDATION AT EAST ENTRY
S2.1
3/8" = 1'-0"
Dwg # 130255-53001.DWG



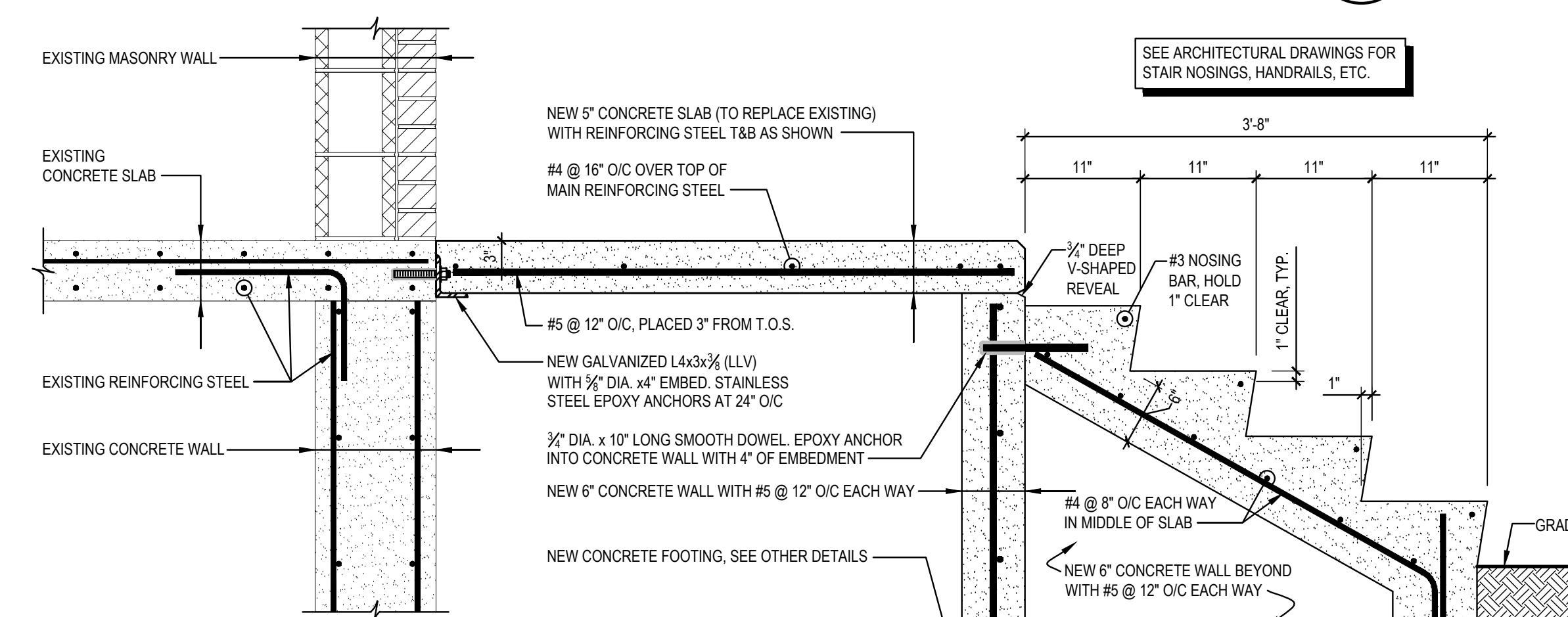
3 PARTIAL PLAN - ROOF FRAMING AT EAST ENTRY
S2.1
3/8" = 1'-0"
Dwg # 130255-53002.DWG

EAST & WEST ENTRY PLAN NOTES

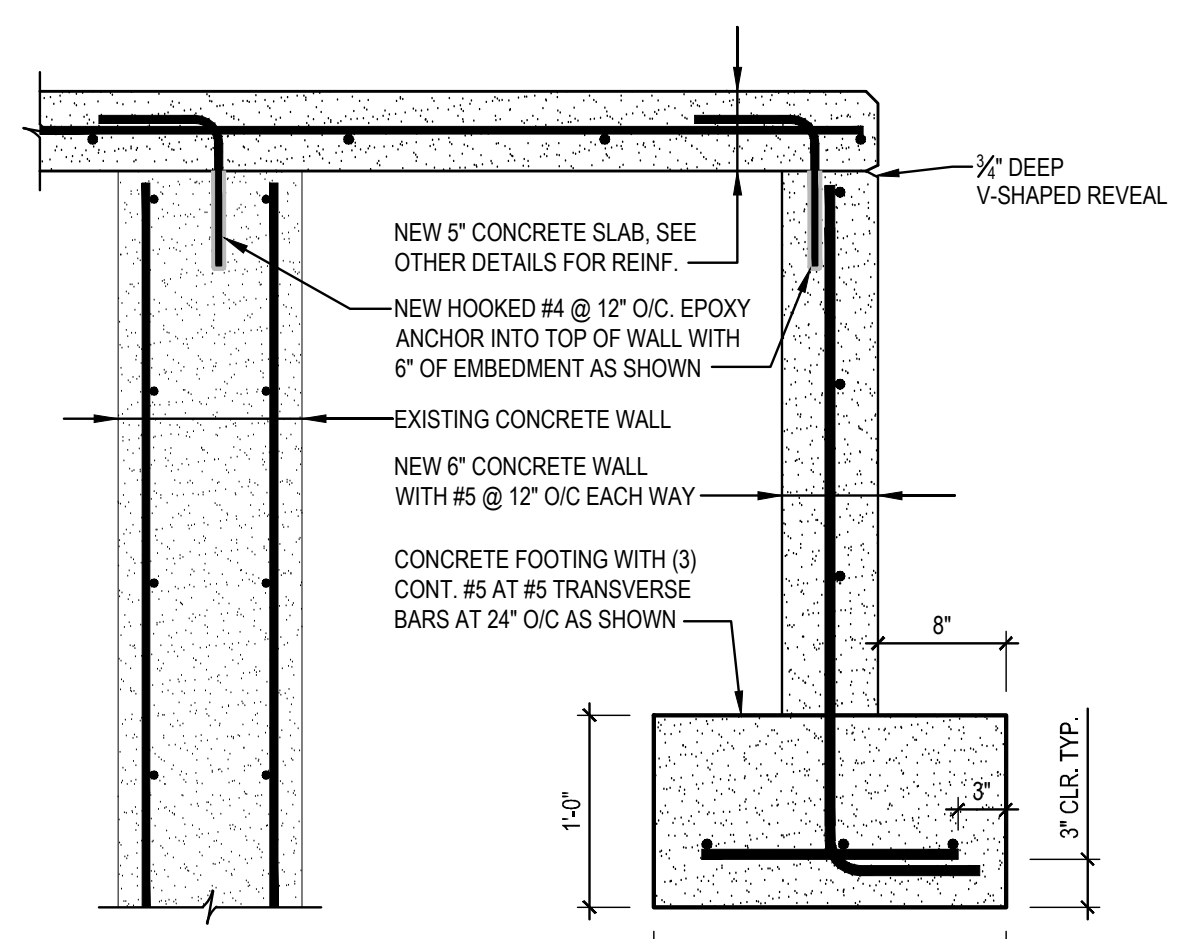
- ALL DIMENSIONS WERE TAKEN FROM EXISTING DRAWINGS AND LIMITED FIELD REVIEW. CONTRACTOR TO VERIFY AND COORDINATE ALL DIMENSIONS PRIOR TO PROCEEDING WITH CONSTRUCTION.
- CONTRACTOR TO PROVIDE SHORING AS REQUIRED TO BRACE TOP OF EXISTING CONCRETE WALLS PRIOR TO REMOVING AND REPLACING EXISTING CONCRETE SLABS.
- METAL DECKING SHALL BE 20 GAUGE, 1.5" DEEP, TYPE B, G90 GALVANIZED, WIDE RIB DECKING. DECKING SHALL BE ATTACHED TO SUPPORTING STEEL WITH A 36/73 PATTERN. SUPPORT FASTENERS SHALL BE 3/4" DIA. RIVET WELDS, TOUCHED UP WITH A COLD GALVANIZING SPRAY. SIDELAP FASTENERS SHALL BE GALVANIZED #10 SCREWS.
- ROOF WAS DESIGNED FOR 10 PSF DEAD LOAD AND 20 PSF ROOF LIVE LOAD PER 2012 NCSBC.
- EPOXY ADHESIVE INTO CONCRETE SHALL BE POWERS PE 1000+, HILTI RE 500 SD, SIMPSON SET XP, OR AN APPROVED EQUIVALENT. ALL STEEL ANCHORS SHALL BE COMPATIBLE WITH EPOXY ADHESIVE THAT IS USED.
- EPOXY ADHESIVE INTO MASONRY SHALL BE HILTI HY 70 OR AN APPROVED EQUIVALENT. ALL STEEL ANCHORS SHALL BE COMPATIBLE AND INSTALLED IN SCREENS AS RECOMMENDED BY THE MANUFACTURER.



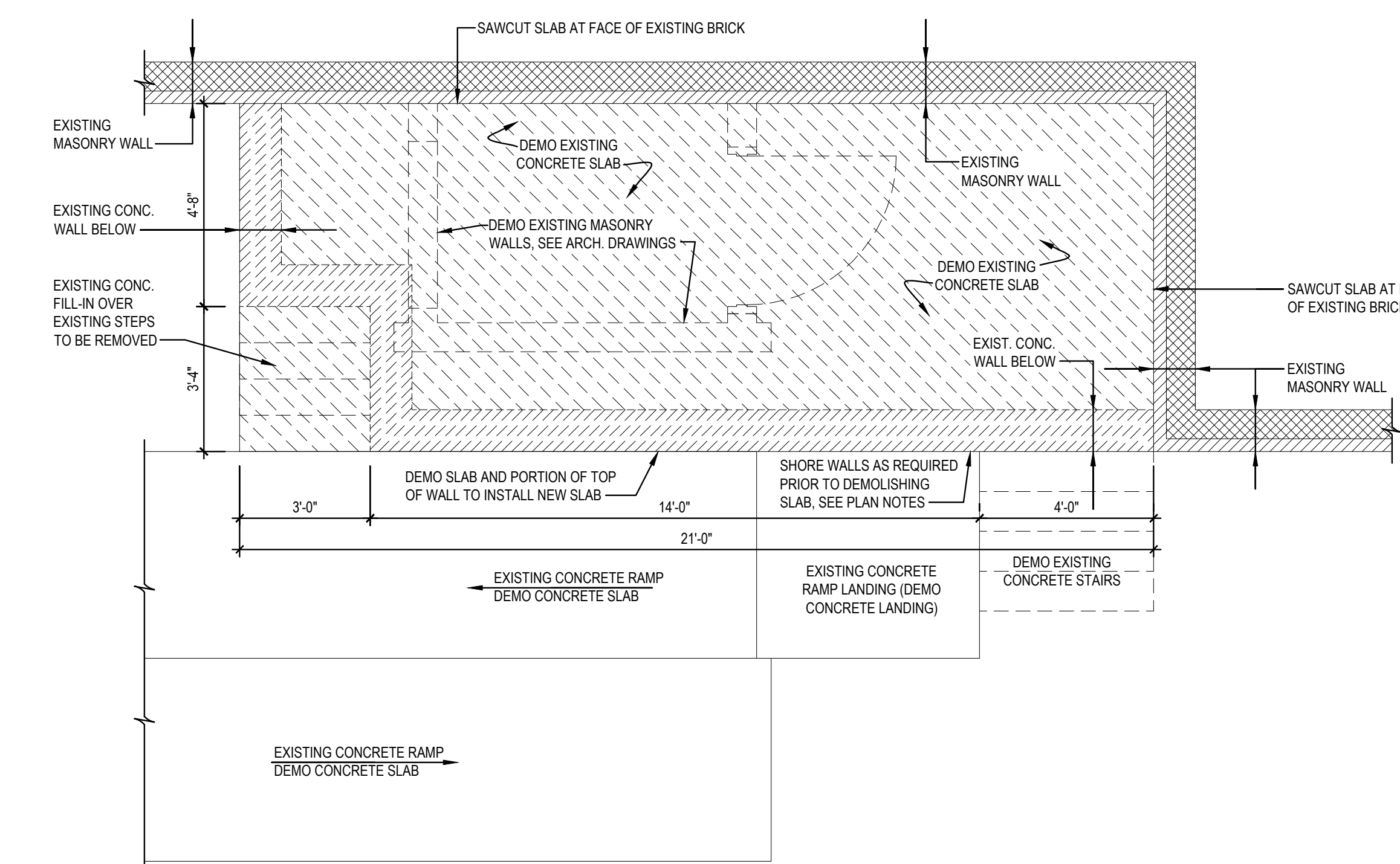
4 SECTION
S2.1
1" = 1'-0"
Dwg # 130255-58000.DWG



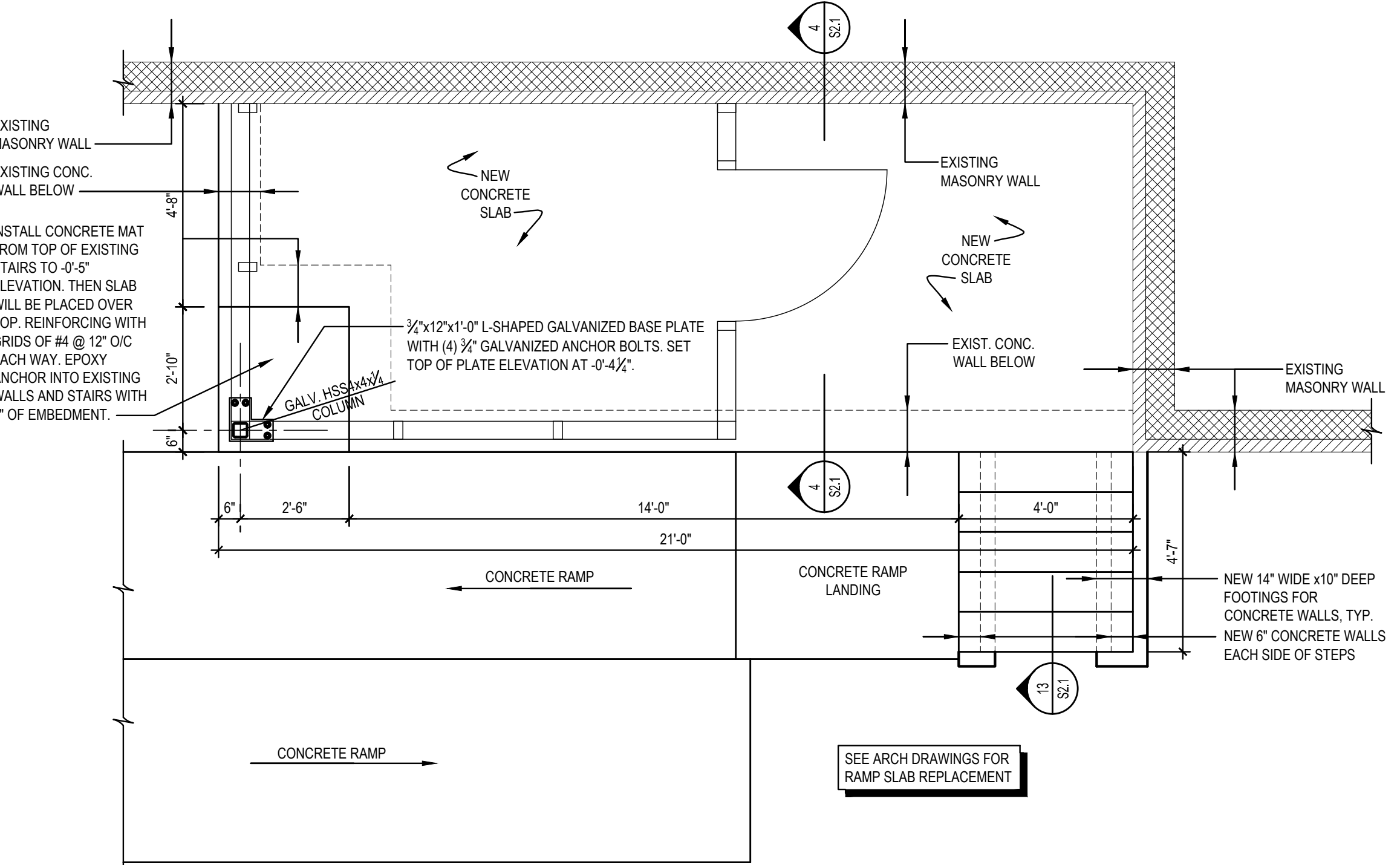
5 SECTION
S2.1
1" = 1'-0"
Dwg # 130255-58001.DWG



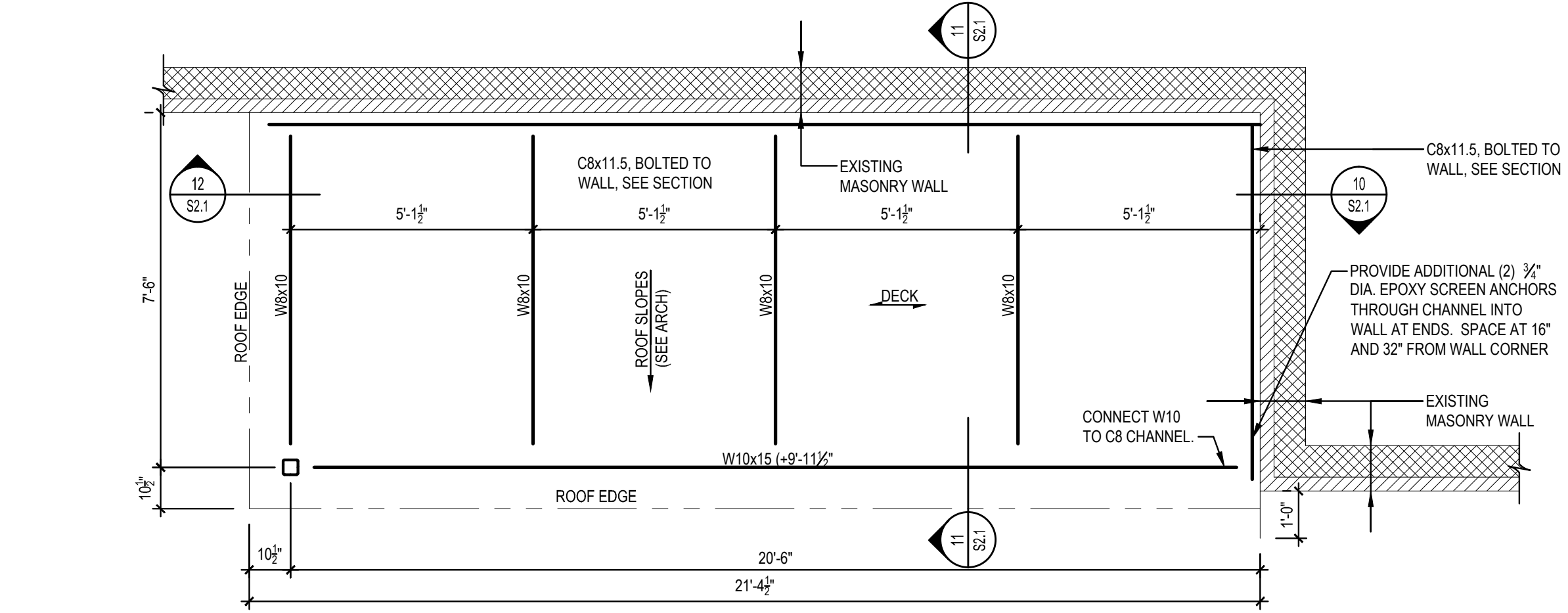
6 SECTION
S2.1
1" = 1'-0"
Dwg # 130255-58002.DWG



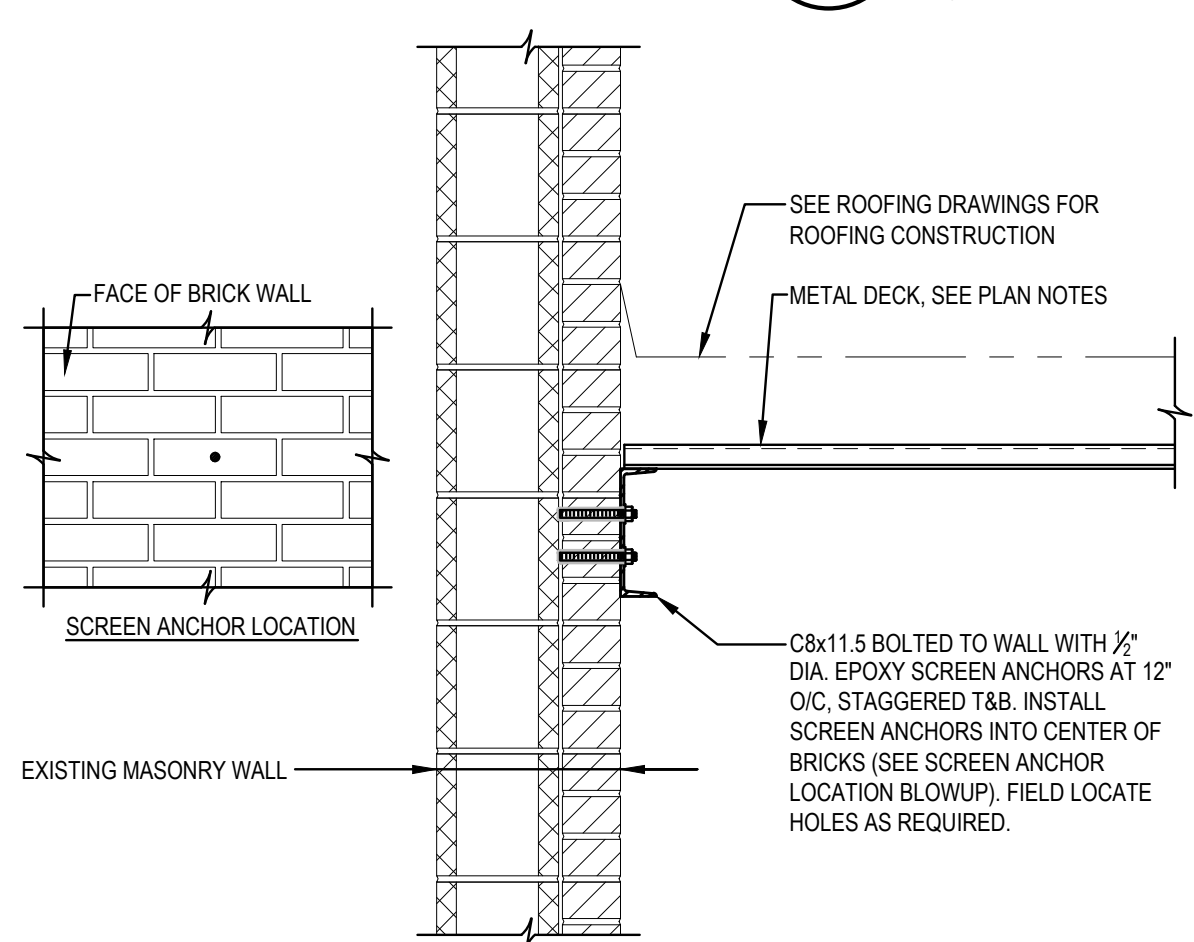
7 PARTIAL PLAN - EXISTING/DEMOLITION AT WEST ENTRY
S2.1
3/8" = 1'-0"
Dwg # 130255-53003.DWG



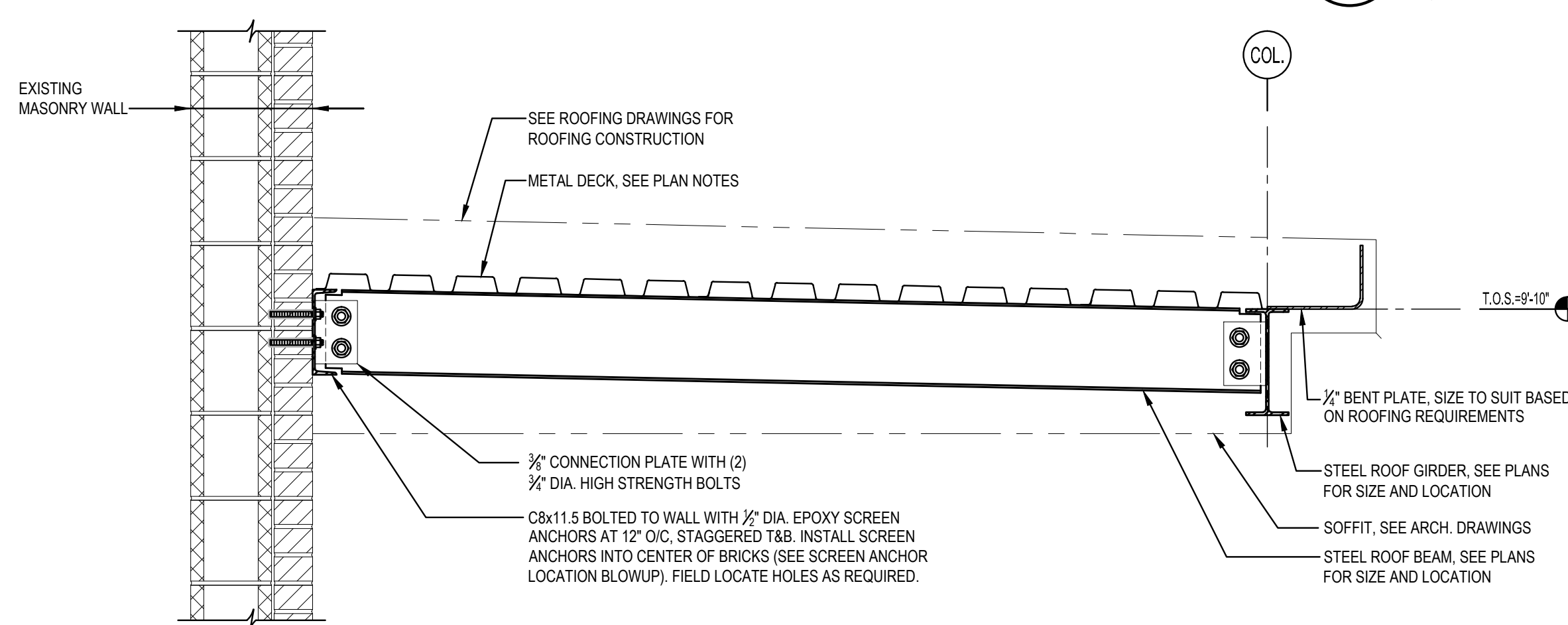
8 PARTIAL PLAN - FOUNDATION AT WEST ENTRY
S2.1
3/8" = 1'-0"
Dwg # 130255-53004.DWG



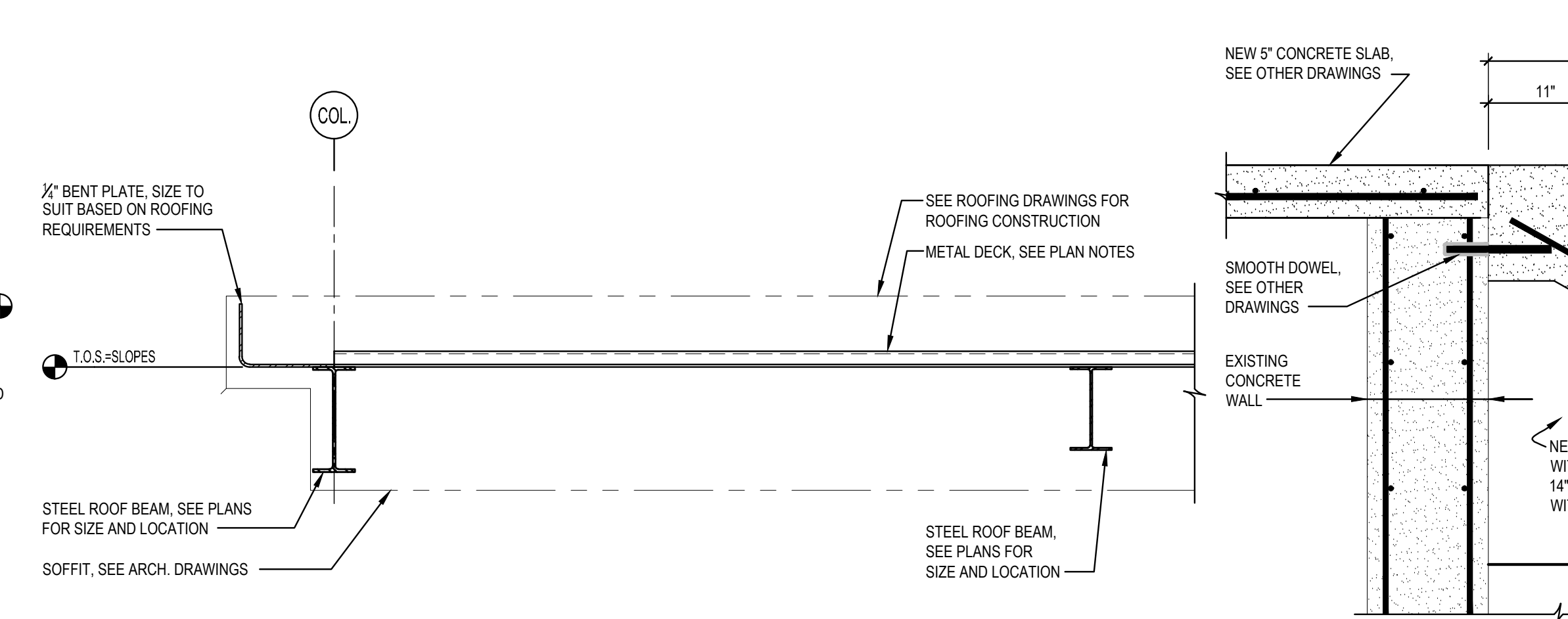
9 PARTIAL PLAN - ROOF FRAMING AT WEST ENTRY
S2.1
3/8" = 1'-0"
Dwg # 130255-53005.DWG



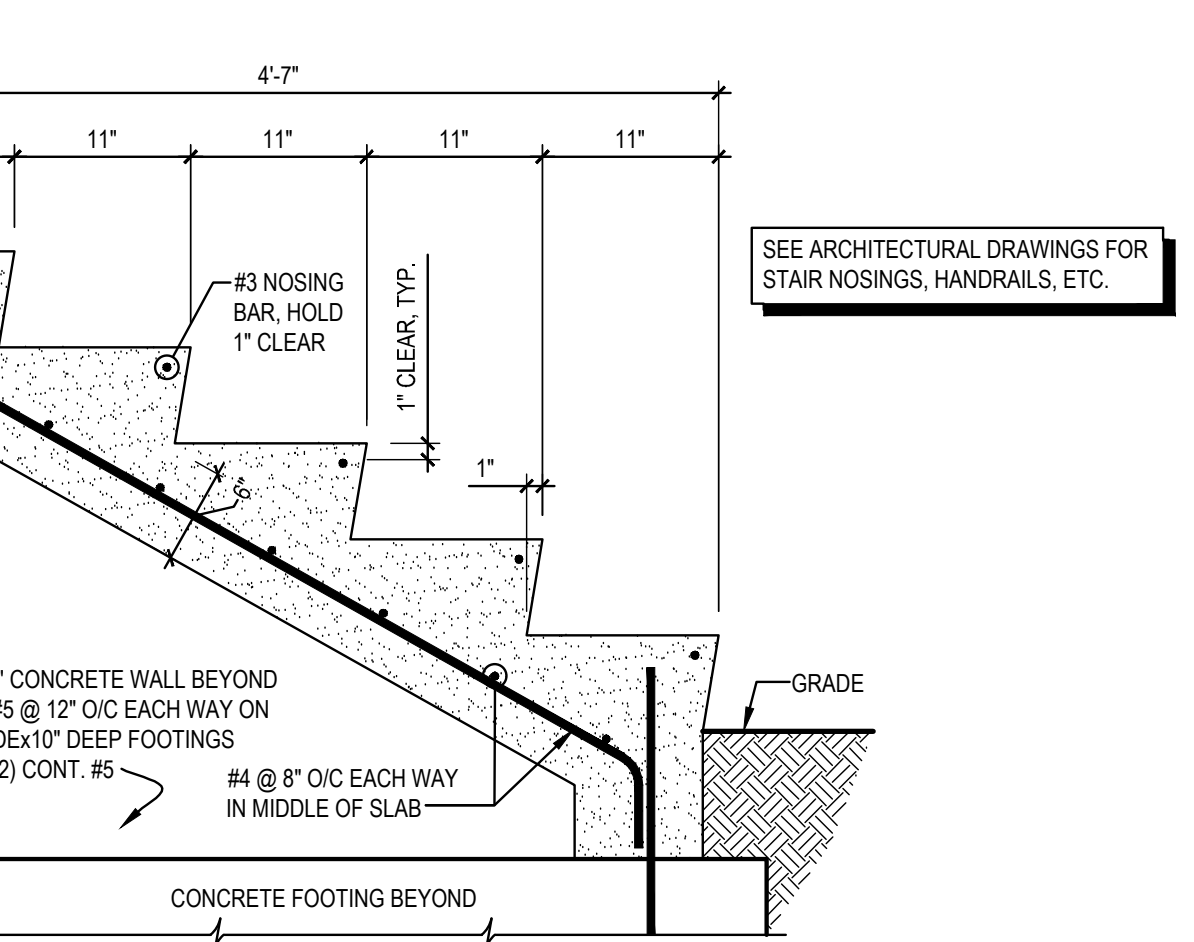
10 SECTION
S2.1
1" = 1'-0"
Dwg # 130255-57000.DWG



11 SECTION
S2.1
1" = 1'-0"
Dwg # 130255-57005.DWG



12 SECTION
S2.1
1" = 1'-0"
Dwg # 130255-57007.DWG



13 SECTION
S2.1
1" = 1'-0"
Dwg # 130255-58003.DWG

CONSTRUCTION DOCUMENTS

DESTROY ALL
PREVIOUS COPIES

Mark	Date	Revision

SKA
CONSULTING ENGINEERS, INC.
300 Pomona Drive
Greensboro, NC 27407-1620
P: 336.855.0900 F: 336.855.0906
www.ska-engineers.com
NC License No. F-0388

SEAL
12-11-2013

RGG Architects
RGG Architects, PLLC
1002 Broad Street
Durham, North Carolina
27705
919.286.5700
www.rggarchitects.com

REV.	DATE	DESCRIPTION

Drawing Title:
FRONT ENTRY PLANS AND DETAILS

Project Title:
**RENOVATE BUILDING 6 FOR RESEARCH AND
ANCILLARY SUPPORT**

Date:
10-11-2013
Project No.
558-15-101
Project Drawing No.
**DRAWING NO.
S2.1**
Sheet 2 of 2