

2009 REINSPECTION PHOTOGRAPHS

OLIN E. TEAGUE VETERANS ADMINISTRATION MEDICAL CENTER
BUILDING 162
TEMPLE, TEXAS



OT-09-293-0301



OT-09-293-0302



OT-09-293-0303



OT-09-293-0304

sample contains asbestos

sample does not contain asbestos

sample does not contain asbestos determined by point count

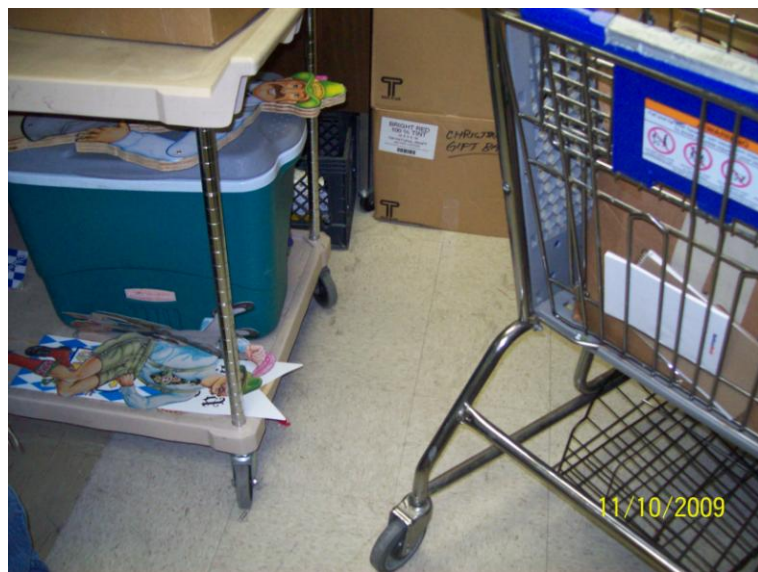
OLIN E. TEAGUE VETERANS ADMINISTRATION MEDICAL CENTER
BUILDING 162
TEMPLE, TEXAS



OT-09-293-0305



OT-09-293-0306



OT-09-293-0307



OT-09-293-0308

sample contains asbestos

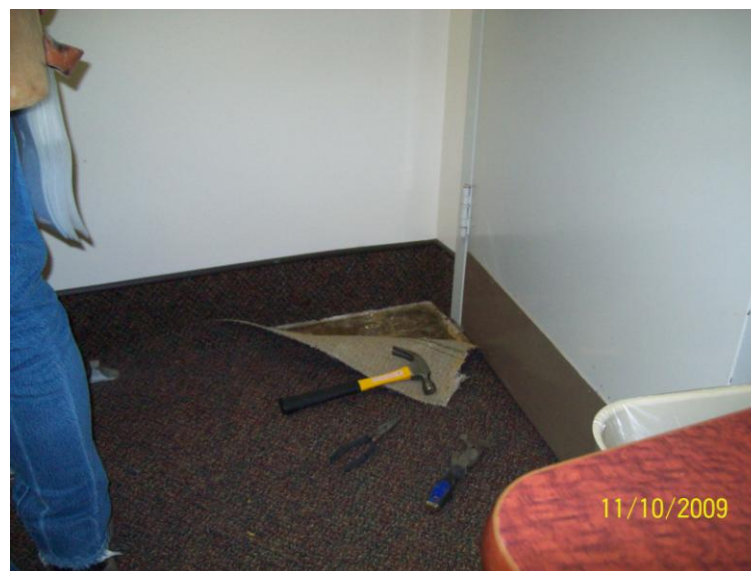
sample does not contain asbestos

sample does not contain asbestos determined by point count

OLIN E. TEAGUE VETERANS ADMINISTRATION MEDICAL CENTER
BUILDING 162
TEMPLE, TEXAS



OT-09-293-0309



OT-09-293-0310



OT-09-293-0311



OT-09-293-0312

sample contains asbestos

sample does not contain asbestos

sample does not contain asbestos determined by point count

OLIN E. TEAGUE VETERANS ADMINISTRATION MEDICAL CENTER
BUILDING 162
TEMPLE, TEXAS



OT-09-293-0313



OT-09-293-0314



OT-09-293-0315



OT-09-293-0316

sample contains asbestos

sample does not contain asbestos

sample does not contain asbestos determined by point count

OLIN E. TEAGUE VETERANS ADMINISTRATION MEDICAL CENTER
BUILDING 162
TEMPLE, TEXAS



OT-09-293-0317



OT-09-293-0318



OT-09-293-0319



OT-09-293-0320

sample contains asbestos

sample does not contain asbestos

sample does not contain asbestos determined by point count

OLIN E. TEAGUE VETERANS ADMINISTRATION MEDICAL CENTER
BUILDING 162
TEMPLE, TEXAS



OT-09-293-0321



OT-09-293-0322



OT-09-293-0323



OT-09-293-0324

sample contains asbestos

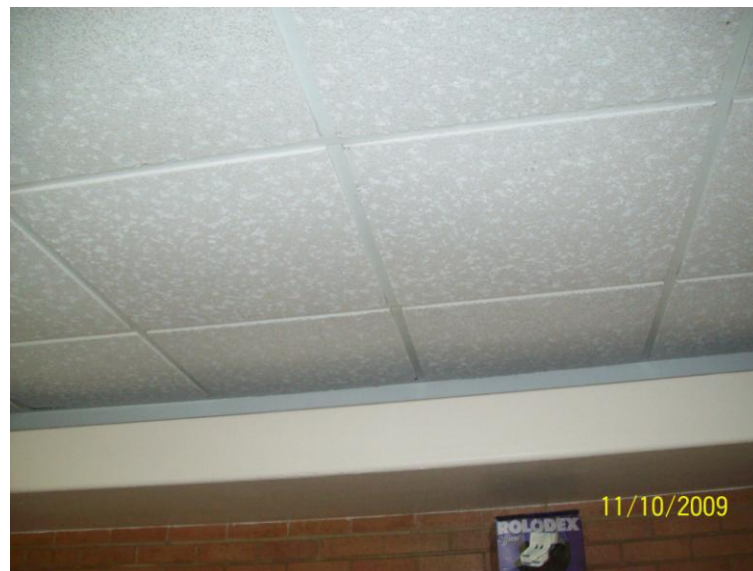
sample does not contain asbestos

sample does not contain asbestos determined by point count

OLIN E. TEAGUE VETERANS ADMINISTRATION MEDICAL CENTER
BUILDING 162
TEMPLE, TEXAS



OT-09-293-0325



OT-09-293-0326



OT-09-293-0327



OT-09-293-0328

sample contains asbestos

sample does not contain asbestos

sample does not contain asbestos determined by point count

OLIN E. TEAGUE VETERANS ADMINISTRATION MEDICAL CENTER
BUILDING 162
TEMPLE, TEXAS



OT-09-293-0329



OT-09-293-0330



OT-09-293-0331



OT-09-293-0332

sample contains asbestos

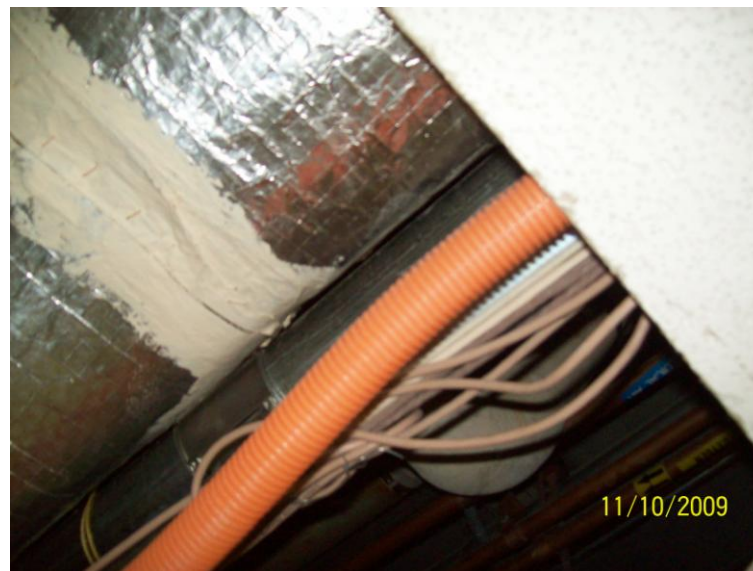
sample does not contain asbestos

sample does not contain asbestos determined by point count

OLIN E. TEAGUE VETERANS ADMINISTRATION MEDICAL CENTER
BUILDING 162
TEMPLE, TEXAS



OT-09-293-0333



OT-09-293-0334



OT-09-293-0335



OT-09-293-0390

sample contains asbestos

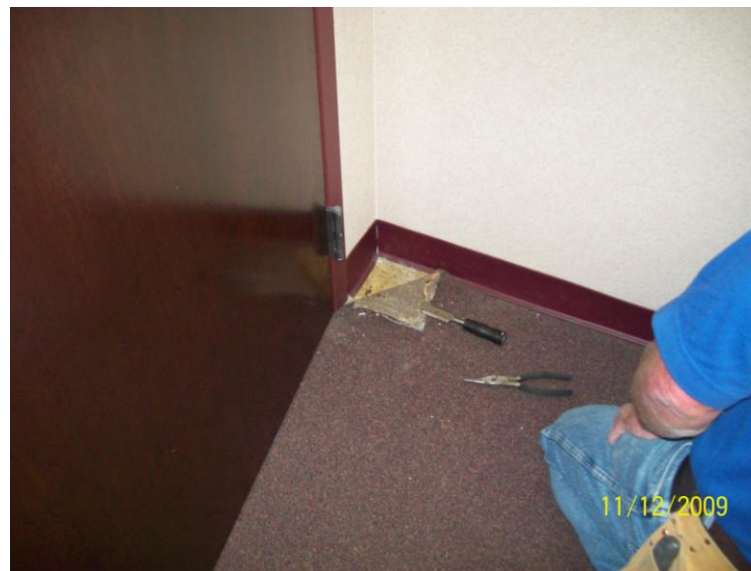
sample does not contain asbestos

sample does not contain asbestos determined by point count

OLIN E. TEAGUE VETERANS ADMINISTRATION MEDICAL CENTER
BUILDING 162
TEMPLE, TEXAS



OT-09-293-0391



OT-09-293-0392



OT-09-293-0393



OT-09-293-0394

sample contains asbestos

sample does not contain asbestos

sample does not contain asbestos determined by point count

OLIN E. TEAGUE VETERANS ADMINISTRATION MEDICAL CENTER
BUILDING 162
TEMPLE, TEXAS



OT-09-293-0395



OT-09-293-0396



OT-09-293-0397



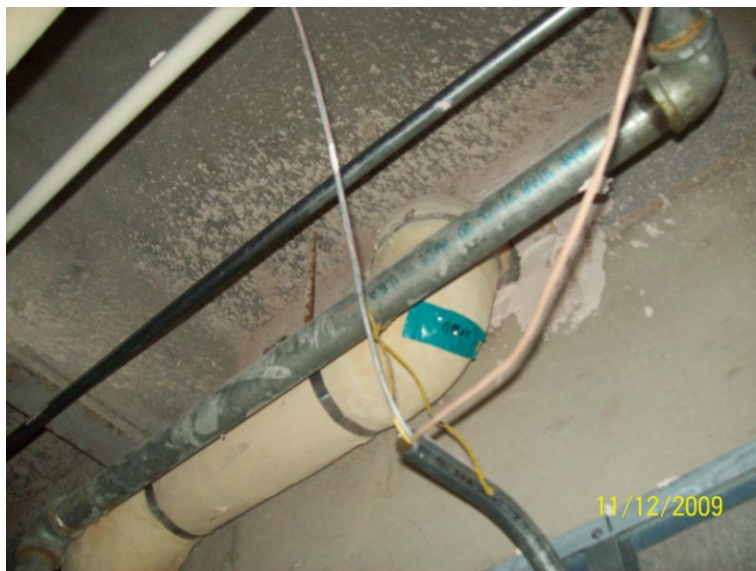
OT-09-293-0398

sample contains asbestos

sample does not contain asbestos

sample does not contain asbestos determined by point count

OLIN E. TEAGUE VETERANS ADMINISTRATION MEDICAL CENTER
BUILDING 162
TEMPLE, TEXAS



OT-09-293-0399



OT-09-293-0400



OT-09-293-0401



OT-09-293-0402

sample contains asbestos

sample does not contain asbestos

sample does not contain asbestos determined by point count

OLIN E. TEAGUE VETERANS ADMINISTRATION MEDICAL CENTER
BUILDING 162
TEMPLE, TEXAS



OT-09-293-0403



OT-09-293-0404



OT-09-293-0405



OT-09-293-0406

sample contains asbestos

sample does not contain asbestos

sample does not contain asbestos determined by point count

OLIN E. TEAGUE VETERANS ADMINISTRATION MEDICAL CENTER
BUILDING 162
TEMPLE, TEXAS



OT-09-293-0407



OT-09-293-0408



OT-09-293-0409



OT-09-293-0410

sample contains asbestos

sample does not contain asbestos

sample does not contain asbestos determined by point count

OLIN E. TEAGUE VETERANS ADMINISTRATION MEDICAL CENTER
BUILDING 162
TEMPLE, TEXAS



OT-09-293-0411



OT-09-293-0412



OT-09-293-0413



OT-09-293-0414

sample contains asbestos

sample does not contain asbestos

sample does not contain asbestos determined by point count

OLIN E. TEAGUE VETERANS ADMINISTRATION MEDICAL CENTER
BUILDING 162
TEMPLE, TEXAS



OT-09-293-0415



OT-09-293-0416



OT-09-293-0417



OT-09-293-0418

sample contains asbestos

sample does not contain asbestos

sample does not contain asbestos determined by point count

OLIN E. TEAGUE VETERANS ADMINISTRATION MEDICAL CENTER
BUILDING 162
TEMPLE, TEXAS



OT-09-293-0419



OT-09-293-0420



OT-09-293-0421



OT-09-293-0422

sample contains asbestos

sample does not contain asbestos

sample does not contain asbestos determined by point count

OLIN E. TEAGUE VETERANS ADMINISTRATION MEDICAL CENTER
BUILDING 162
TEMPLE, TEXAS



OT-09-293-0423



OT-09-293-0424



OT-09-293-0425



OT-09-293-0426

sample contains asbestos

sample does not contain asbestos

sample does not contain asbestos determined by point count

OLIN E. TEAGUE VETERANS ADMINISTRATION MEDICAL CENTER
BUILDING 162
TEMPLE, TEXAS



OT-09-293-0427



OT-09-293-0428



OT-09-293-0429



OT-09-293-0430

sample contains asbestos

sample does not contain asbestos

sample does not contain asbestos determined by point count

OLIN E. TEAGUE VETERANS ADMINISTRATION MEDICAL CENTER
BUILDING 162
TEMPLE, TEXAS



OT-09-293-0431



OT-09-293-0432



OT-09-293-0433



OT-09-293-0434

sample contains asbestos

sample does not contain asbestos

sample does not contain asbestos determined by point count

OLIN E. TEAGUE VETERANS ADMINISTRATION MEDICAL CENTER
BUILDING 162
TEMPLE, TEXAS



OT-09-293-0435



OT-09-293-0436



OT-09-293-0437



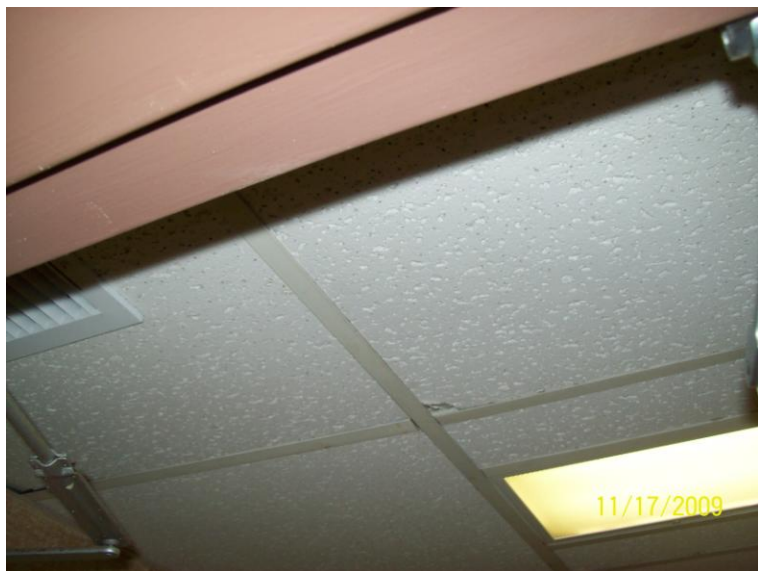
OT-09-293-0438

sample contains asbestos

sample does not contain asbestos

sample does not contain asbestos determined by point count

OLIN E. TEAGUE VETERANS ADMINISTRATION MEDICAL CENTER
BUILDING 162
TEMPLE, TEXAS



OT-09-293-0439



OT-09-293-0440



OT-09-293-0441



OT-09-293-0442

sample contains asbestos

sample does not contain asbestos

sample does not contain asbestos determined by point count

OLIN E. TEAGUE VETERANS ADMINISTRATION MEDICAL CENTER
BUILDING 162
TEMPLE, TEXAS



OT-09-293-0443



OT-09-293-0444



OT-09-293-0445



OT-09-293-0446

sample contains asbestos

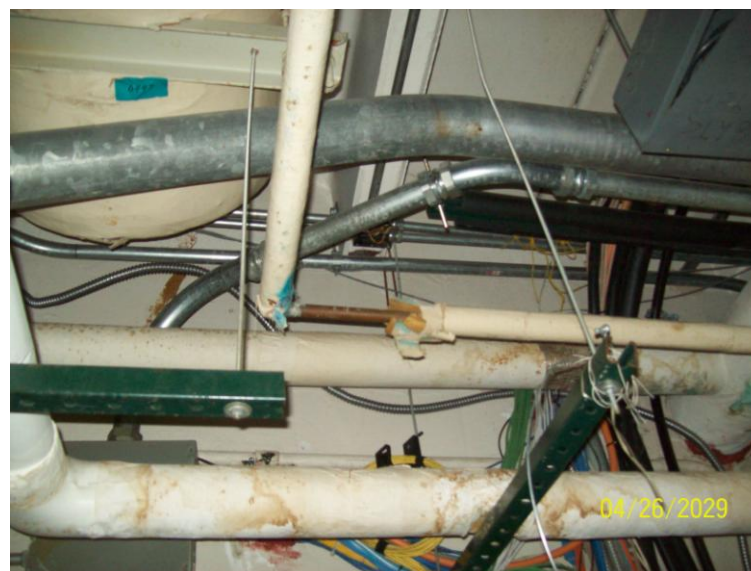
sample does not contain asbestos

sample does not contain asbestos determined by point count

OLIN E. TEAGUE VETERANS ADMINISTRATION MEDICAL CENTER
BUILDING 162
TEMPLE, TEXAS



OT-09-293-0447



OT-09-293-0448



OT-09-293-0449



OT-09-293-0450

sample contains asbestos

sample does not contain asbestos

sample does not contain asbestos determined by point count

OLIN E. TEAGUE VETERANS ADMINISTRATION MEDICAL CENTER
BUILDING 162
TEMPLE, TEXAS



OT-09-293-0451



OT-09-293-0452



OT-09-293-0453



OT-09-293-0454

sample contains asbestos

sample does not contain asbestos

sample does not contain asbestos determined by point count

OLIN E. TEAGUE VETERANS ADMINISTRATION MEDICAL CENTER
BUILDING 162
TEMPLE, TEXAS



OT-09-293-0455



OT-09-293-0456



OT-09-293-0457



OT-09-293-0458

sample contains asbestos

sample does not contain asbestos

sample does not contain asbestos determined by point count

OLIN E. TEAGUE VETERANS ADMINISTRATION MEDICAL CENTER
BUILDING 162
TEMPLE, TEXAS



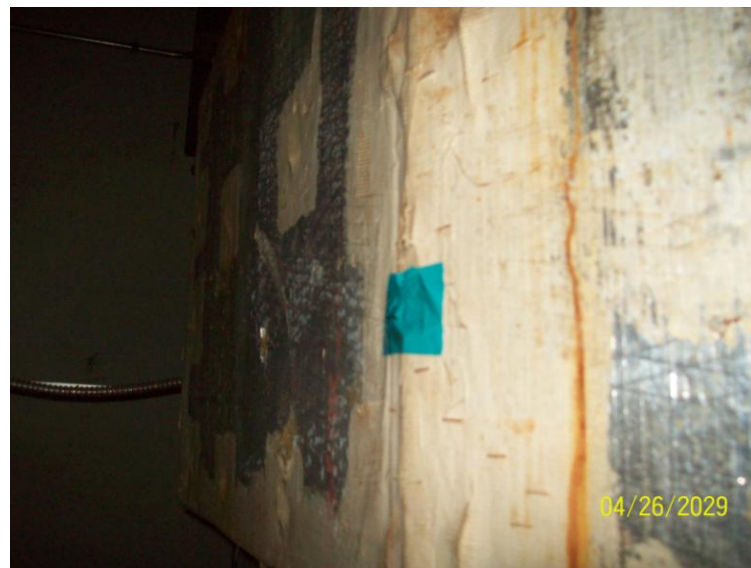
OT-09-293-0459



OT-09-293-0460



OT-09-293-0461



OT-09-293-0462

sample contains asbestos

sample does not contain asbestos

sample does not contain asbestos determined by point count

OLIN E. TEAGUE VETERANS ADMINISTRATION MEDICAL CENTER
BUILDING 162
TEMPLE, TEXAS



OT-09-293-0463



OT-09-293-0464



OT-09-293-0465



OT-09-293-0466

sample contains asbestos

sample does not contain asbestos

sample does not contain asbestos determined by point count

OLIN E. TEAGUE VETERANS ADMINISTRATION MEDICAL CENTER
BUILDING 162
TEMPLE, TEXAS



OT-09-293-0467



OT-09-293-0468



OT-09-293-0469



OT-09-293-0470

sample contains asbestos

sample does not contain asbestos

sample does not contain asbestos determined by point count

OLIN E. TEAGUE VETERANS ADMINISTRATION MEDICAL CENTER
BUILDING 162
TEMPLE, TEXAS



OT-09-293-0471



OT-09-293-0472



OT-09-293-0473



OT-09-293-0474

sample contains asbestos

sample does not contain asbestos

sample does not contain asbestos determined by point count