

OLIN E. TEAGUE VETERANS ADMINISTRATION MEDICAL CENTER  
BUILDING 162  
TEMPLE, TEXAS



OT-09-293-0475



OT-09-293-0476



OT-09-293-0477



OT-09-293-0478

sample contains asbestos

sample does not contain asbestos

sample does not contain asbestos determined by point count

OLIN E. TEAGUE VETERANS ADMINISTRATION MEDICAL CENTER  
BUILDING 162  
TEMPLE, TEXAS



OT-09-293-0479



OT-09-293-0480



OT-09-293-0481



OT-09-293-0482

sample contains asbestos

sample does not contain asbestos

sample does not contain asbestos determined by point count



OLIN E. TEAGUE VETERANS ADMINISTRATION MEDICAL CENTER  
BUILDING 162  
TEMPLE, TEXAS



OT-09-293-0483



OT-09-293-0484



OT-09-293-0485



OT-09-293-0486

sample contains asbestos

sample does not contain asbestos

sample does not contain asbestos determined by point count

OLIN E. TEAGUE VETERANS ADMINISTRATION MEDICAL CENTER  
BUILDING 162  
TEMPLE, TEXAS



OT-09-293-0487



OT-09-293-0488



OT-09-293-0489



OT-09-293-0490

sample contains asbestos

sample does not contain asbestos

sample does not contain asbestos determined by point count



OLIN E. TEAGUE VETERANS ADMINISTRATION MEDICAL CENTER  
BUILDING 162  
TEMPLE, TEXAS



OT-09-293-0491



OT-09-293-0492



OT-09-293-0493



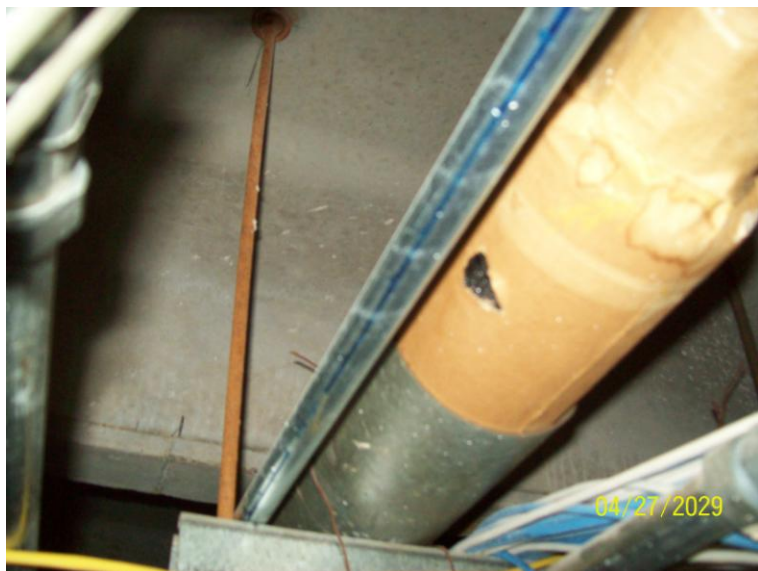
OT-09-293-0494

sample contains asbestos

sample does not contain asbestos

sample does not contain asbestos determined by point count

OLIN E. TEAGUE VETERANS ADMINISTRATION MEDICAL CENTER  
BUILDING 162  
TEMPLE, TEXAS



OT-09-293-0495



OT-09-293-0496



OT-09-293-0497



OT-09-293-0498

sample contains asbestos

sample does not contain asbestos

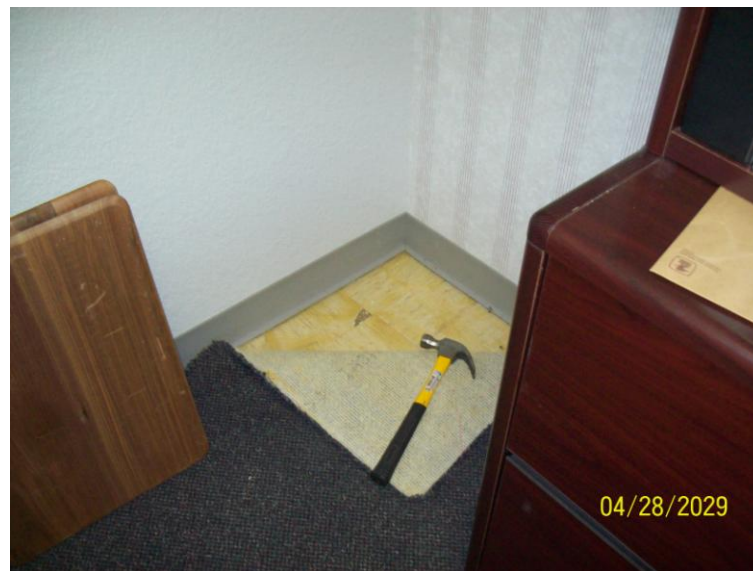
sample does not contain asbestos determined by point count



OLIN E. TEAGUE VETERANS ADMINISTRATION MEDICAL CENTER  
BUILDING 162  
TEMPLE, TEXAS



OT-09-293-0499



OT-09-293-0500



OT-09-293-0701



OT-09-293-0702

sample contains asbestos

sample does not contain asbestos

sample does not contain asbestos determined by point count

OLIN E. TEAGUE VETERANS ADMINISTRATION MEDICAL CENTER  
BUILDING 162  
TEMPLE, TEXAS



OT-09-293-0703



OT-09-293-0704



OT-09-293-0705



OT-09-293-0706

sample contains asbestos

sample does not contain asbestos

sample does not contain asbestos determined by point count



OLIN E. TEAGUE VETERANS ADMINISTRATION MEDICAL CENTER  
BUILDING 162  
TEMPLE, TEXAS



OT-09-293-0707



OT-09-293-0708



OT-09-293-0709



OT-09-293-0710

sample contains asbestos

sample does not contain asbestos

sample does not contain asbestos determined by point count

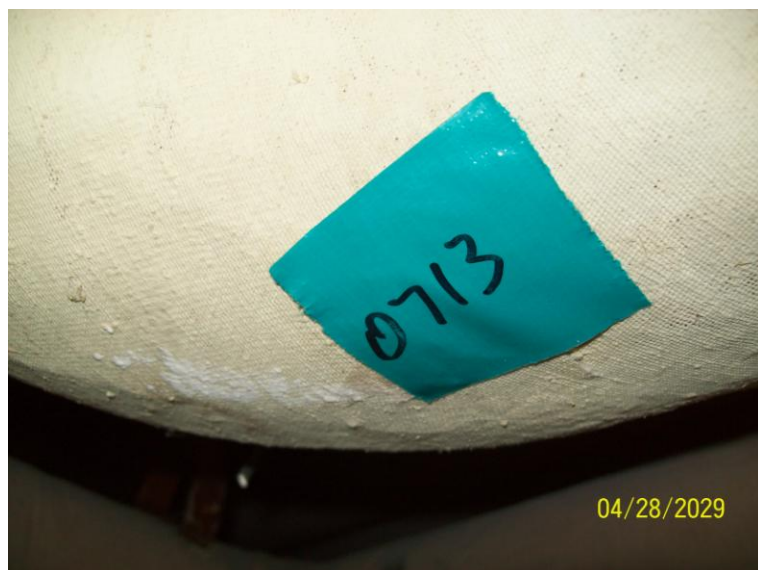
OLIN E. TEAGUE VETERANS ADMINISTRATION MEDICAL CENTER  
BUILDING 162  
TEMPLE, TEXAS



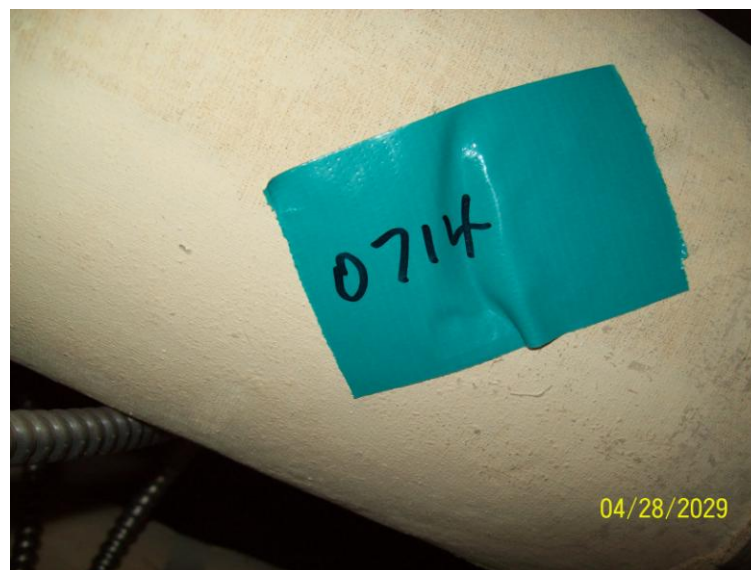
OT-09-293-0711



OT-09-293-0712



OT-09-293-0713



OT-09-293-0714

sample contains asbestos

sample does not contain asbestos

sample does not contain asbestos determined by point count



OLIN E. TEAGUE VETERANS ADMINISTRATION MEDICAL CENTER  
BUILDING 162  
TEMPLE, TEXAS



OT-09-293-0715



OT-09-293-0716



OT-09-293-0717



OT-09-293-0718

sample contains asbestos

sample does not contain asbestos

sample does not contain asbestos determined by point count

OLIN E. TEAGUE VETERANS ADMINISTRATION MEDICAL CENTER  
BUILDING 162  
TEMPLE, TEXAS



OT-09-293-0719



OT-09-293-0720



OT-09-293-0721



OT-09-293-0722

sample contains asbestos

sample does not contain asbestos

sample does not contain asbestos determined by point count



OLIN E. TEAGUE VETERANS ADMINISTRATION MEDICAL CENTER  
BUILDING 162  
TEMPLE, TEXAS



OT-09-293-0723



OT-09-293-0724



OT-09-293-0725



OT-09-293-0726

sample contains asbestos

sample does not contain asbestos

sample does not contain asbestos determined by point count

OLIN E. TEAGUE VETERANS ADMINISTRATION MEDICAL CENTER  
BUILDING 162  
TEMPLE, TEXAS



OT-09-293-0727



OT-09-293-0728



OT-09-293-0729



OT-09-293-0730

sample contains asbestos

sample does not contain asbestos

sample does not contain asbestos determined by point count



OLIN E. TEAGUE VETERANS ADMINISTRATION MEDICAL CENTER  
BUILDING 162  
TEMPLE, TEXAS



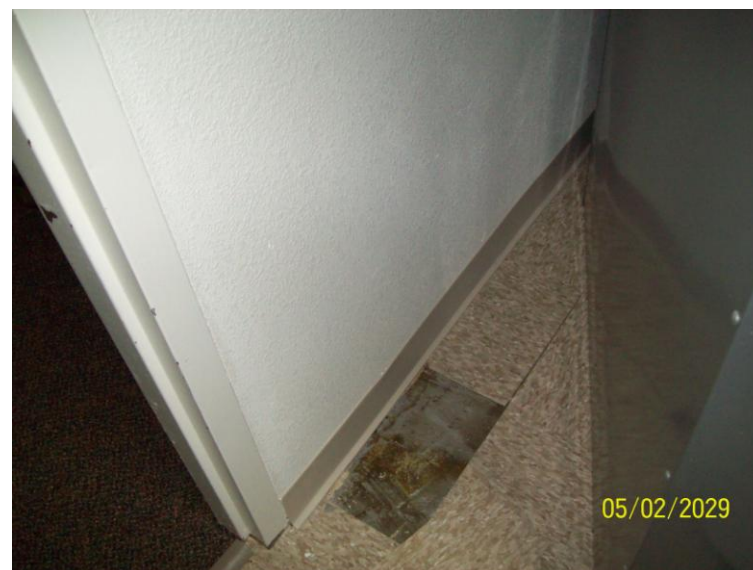
OT-09-293-0731



OT-09-293-0732



OT-09-293-0733



OT-09-293-0734

sample contains asbestos

sample does not contain asbestos

sample does not contain asbestos determined by point count

OLIN E. TEAGUE VETERANS ADMINISTRATION MEDICAL CENTER  
BUILDING 162  
TEMPLE, TEXAS



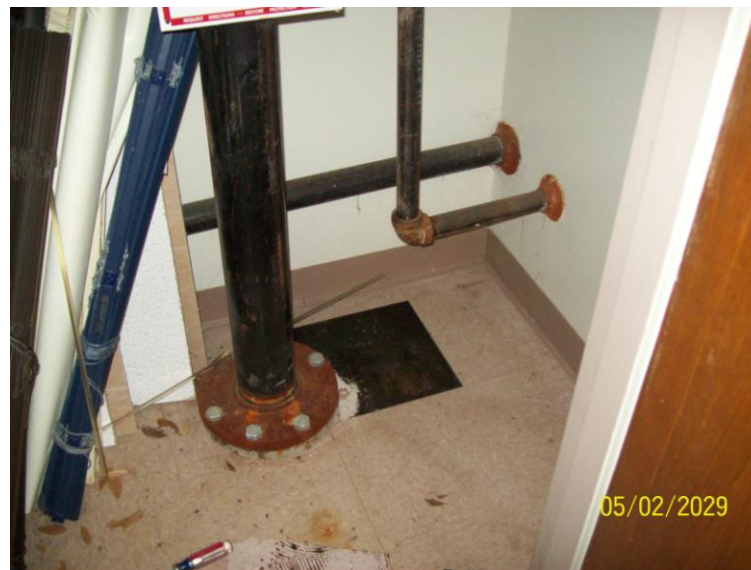
OT-09-293-0735



OT-09-293-0736



OT-09-293-0737



OT-09-293-0738

sample contains asbestos

sample does not contain asbestos

sample does not contain asbestos determined by point count



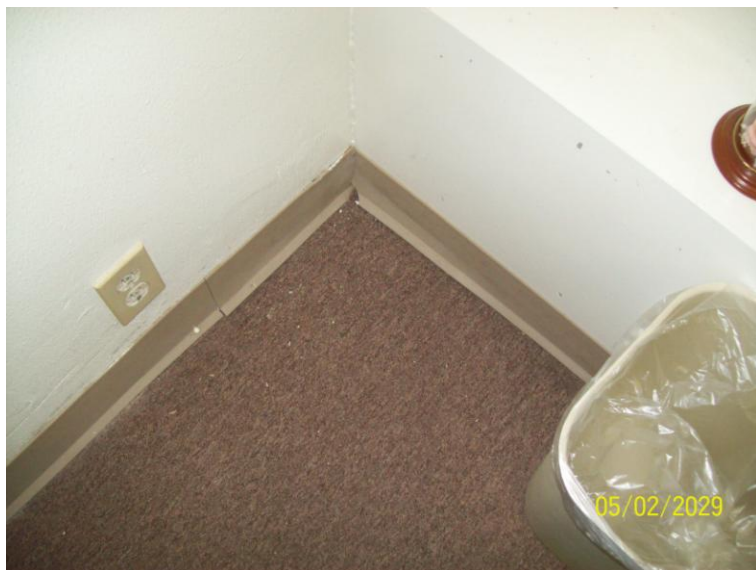
OLIN E. TEAGUE VETERANS ADMINISTRATION MEDICAL CENTER  
BUILDING 162  
TEMPLE, TEXAS



OT-09-293-0739



OT-09-293-0740



OT-09-293-0741



OT-09-293-0742

sample contains asbestos

sample does not contain asbestos

sample does not contain asbestos determined by point count

OLIN E. TEAGUE VETERANS ADMINISTRATION MEDICAL CENTER  
BUILDING 162  
TEMPLE, TEXAS



OT-09-293-0743



OT-09-293-0744



OT-09-293-0745



OT-09-293-0746

sample contains asbestos

sample does not contain asbestos

sample does not contain asbestos determined by point count



OLIN E. TEAGUE VETERANS ADMINISTRATION MEDICAL CENTER  
BUILDING 162  
TEMPLE, TEXAS



OT-09-293-0747



OT-09-293-0748



OT-09-293-0749



OT-09-293-0750

sample contains asbestos

sample does not contain asbestos

sample does not contain asbestos determined by point count

OLIN E. TEAGUE VETERANS ADMINISTRATION MEDICAL CENTER  
BUILDING 162  
TEMPLE, TEXAS



OT-09-293-0751



OT-09-293-0752



OT-09-293-0753



OT-09-293-0754

sample contains asbestos

sample does not contain asbestos

sample does not contain asbestos determined by point count



OLIN E. TEAGUE VETERANS ADMINISTRATION MEDICAL CENTER  
BUILDING 162  
TEMPLE, TEXAS



OT-09-293-0755



OT-09-293-0756



OT-09-293-0757



OT-09-293-0758

sample contains asbestos

sample does not contain asbestos

sample does not contain asbestos determined by point count

OLIN E. TEAGUE VETERANS ADMINISTRATION MEDICAL CENTER  
BUILDING 162  
TEMPLE, TEXAS



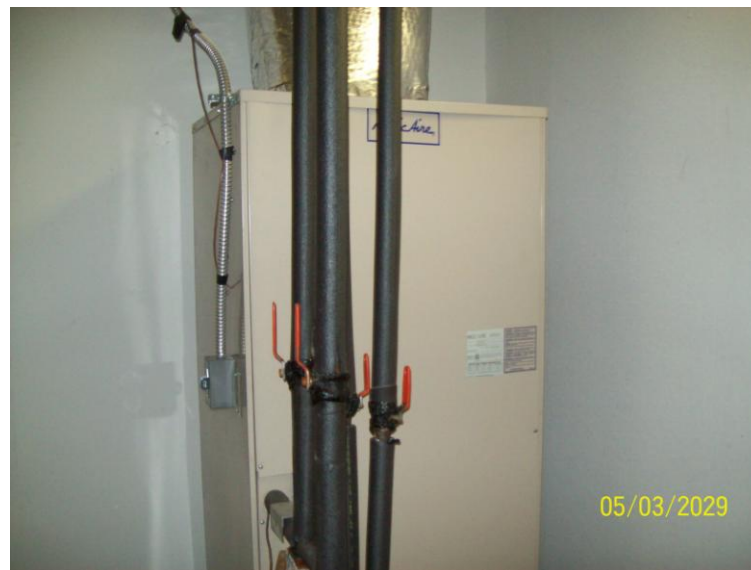
OT-09-293-0759



OT-09-293-0760



OT-09-293-0761



OT-09-293-0762

sample contains asbestos

sample does not contain asbestos

sample does not contain asbestos determined by point count



OLIN E. TEAGUE VETERANS ADMINISTRATION MEDICAL CENTER  
BUILDING 162  
TEMPLE, TEXAS



OT-09-293-0763



OT-09-293-0764



OT-09-293-0765



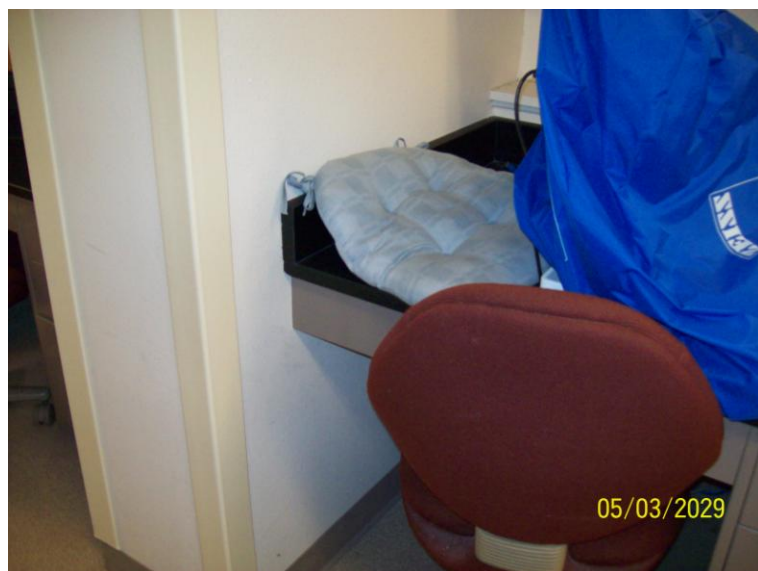
OT-09-293-0766

sample contains asbestos

sample does not contain asbestos

sample does not contain asbestos determined by point count

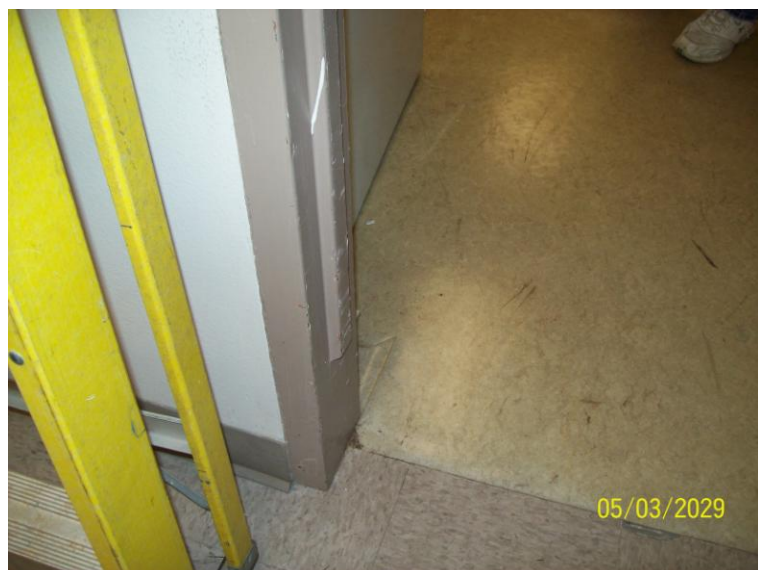
OLIN E. TEAGUE VETERANS ADMINISTRATION MEDICAL CENTER  
BUILDING 162  
TEMPLE, TEXAS



OT-09-293-0767



OT-09-293-0768



OT-09-293-0769



OT-09-293-0770

sample contains asbestos

sample does not contain asbestos

sample does not contain asbestos determined by point count



OLIN E. TEAGUE VETERANS ADMINISTRATION MEDICAL CENTER  
BUILDING 162  
TEMPLE, TEXAS



OT-09-293-0771



OT-09-293-0772



OT-09-293-0773



OT-09-293-0774

sample contains asbestos

sample does not contain asbestos

sample does not contain asbestos determined by point count



OLIN E. TEAGUE VETERANS ADMINISTRATION MEDICAL CENTER  
BUILDING 162  
TEMPLE, TEXAS



OT-09-293-0775



OT-09-293-0776



OT-09-293-0777



OT-09-293-0778

sample contains asbestos

sample does not contain asbestos

sample does not contain asbestos determined by point count



OLIN E. TEAGUE VETERANS ADMINISTRATION MEDICAL CENTER  
BUILDING 162  
TEMPLE, TEXAS



OT-09-293-0779



OT-09-293-0780



OT-09-293-0781



OT-09-293-0782

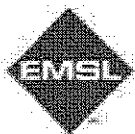
sample contains asbestos

sample does not contain asbestos

sample does not contain asbestos determined by point count

## **2009 REINSPECTION LABORATORY REPORTS**



**EMSL Analytical, Inc.**

2444 W. George Street, Chicago, IL 60618

Phone: (773) 313-0099 Fax: (773) 313-0139 Email: [chicagolab@emsl.com](mailto:chicagolab@emsl.com)

Attn: **Roy W. Dowling**  
**ALTEC Environmental Consultants, Inc.**  
**P.O. Box 17867**  
**Shreveport, LA 71138-0867**

Fax: (318) 687-9923 Phone: (318) 687-3771

Project: **09-16368, Olin E. Teague VAMC Reinspection**

Customer ID: ALT50

Customer PO:

Received: 11/11/09 10:00 AM

EMSL Order: 260906540

EMSL Proj: VAMC Reinspection

Analysis Date: 11/12/2009

### Test Report: Asbestos Analysis of Bulk Materials via EPA 600/R-93/116 Method using Polarized Light Microscopy

Sample	Description	Appearance	Non-Asbestos		Asbestos
			% Fibrous	% Non-Fibrous	% Type
[REDACTED]					
[REDACTED]					
[REDACTED]					
OT-09-293-0301 260906540-0026	Bldg. 162	White Non-Fibrous Homogeneous		100% Non-fibrous (other)	None Detected
OT-09-293-0302-Tape 260906540-0027	Bldg. 162	White Fibrous  Homogeneous	100% Cellulose	0% Non-fibrous (other)	None Detected
OT-09-293-0302-Mud 260906540-0027A	Bldg. 162	White Non-Fibrous  Homogeneous		100% Non-fibrous (other)	None Detected
OT-09-293-0303 260906540-0028	Bldg. 162	White Fibrous Heterogeneous	60% Cellulose 20% Min. Wool	20% Non-fibrous (other)	None Detected

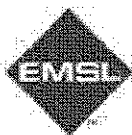
**Analyst(s)**

Jonathan Tallert (20)  
Michael Pohlmann (96)

Andrei Poluchowicz,  
or other approved signatory

Due to magnification limitations inherent in PLM, asbestos fibers in dimensions below the resolution capability of PLM may not be detected. The limit of detection as stated in the method is 1%. The above test report relates only to the items tested and may not be reproduced in any form without the express written approval of EMSL Analytical, Inc. EMSL's liability is limited to the cost of analysis. EMSL bears no responsibility for sample collection activities or analytical method limitations. Interpretation and use of test results are the responsibility of the client. Samples received in good condition unless otherwise noted. This report must not be used to claim product endorsement by NVLAP or any agency of the U.S. Government.

Samples analyzed by EMSL Analytical, Inc. Chicago 2444 W. George Street, Chicago IL NVLAP Lab Code 200399-0, TX 300289

**EMSL Analytical, Inc.**

2444 W. George Street, Chicago, IL 60618

Phone: (773) 313-0099 Fax: (773) 313-0139 Email: [chicago@emsl.com](mailto:chicago@emsl.com)

Attn: **Roy W. Dowling**  
**ALTEC Environmental Consultants, Inc.**  
**P.O. Box 17867**  
**Shreveport, LA 71138-0867**

Fax: (318) 687-9923 Phone: (318) 687-3771  
Project: **09-16368, Olin E. Teague VAMC Reinspection**

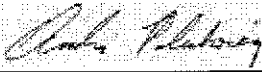
Customer ID: ALT50  
Customer PO:  
Received: 11/11/09 10:00 AM  
EMSL Order: 260906540  
EMSL Proj: VAMC Reinspection  
Analysis Date: 11/12/2009

### Test Report: Asbestos Analysis of Bulk Materials via EPA 600/R-93/116 Method using Polarized Light Microscopy

Sample	Description	Appearance	Non-Asbestos		Asbestos
			% Fibrous	% Non-Fibrous	% Type
OT-09-293-0304- Cove Molding 260906540-0029	Bldg. 162	Gray Non-Fibrous Homogeneous		100% Non-fibrous (other)	None Detected
OT-09-293-0304- Adhesive 260906540-0029A	Bldg. 162	Yellow Non-Fibrous Homogeneous		100% Non-fibrous (other)	None Detected
OT-09-293-0305 260906540-0030	Bldg. 162	White Non-Fibrous Homogeneous	60% Cellulose 20% Min. Wool	20% Non-fibrous (other)	None Detected
OT-09-293-0306- Floor Tile 260906540-0031	Bldg. 162	Brown Non-Fibrous Homogeneous		98% Non-fibrous (other)	2% Chrysotile
OT-09-293-0306- Mastic 260906540-0031A	Bldg. 162	Black Non-Fibrous Heterogeneous		97% Non-fibrous (other)	3% Chrysotile
OT-09-293-0307- Floor Tile 260906540-0032	Bldg. 162	White Non-Fibrous Homogeneous		100% Non-fibrous (other)	None Detected

**Analyst(s)**

*Jonathan Tallert (20)*  
*Michael Pohmann (96)*

  
Andrei Poluchowicz,  
or other approved signatory

Due to magnification limitations inherent in PLM, asbestos fibers in dimensions below the resolution capability of PLM may not be detected. The limit of detection as stated in the method is 1%. The above test report relates only to the items tested and may not be reproduced in any form without the express written approval of EMSL Analytical, Inc. EMSL's liability is limited to the cost of analysis. EMSL bears no responsibility for sample collection activities or analytical method limitations. Interpretation and use of test results are the responsibility of the client. Samples received in good condition unless otherwise noted. This report must not be used to claim product endorsement by NVLAP or any agency of the U.S. Government.

Samples analyzed by EMSL Analytical, Inc. Chicago 2444 W. George Street, Chicago IL NVLAP Lab Code 200399-0, TX 300289



**EMSL Analytical, Inc.**

2444 W. George Street, Chicago, IL 60618

Phone: (773) 313-0099 Fax: (773) 313-0139 Email: [chicago@emsl.com](mailto:chicago@emsl.com)

Attn: **Roy W. Dowling**  
**ALTEC Environmental Consultants, Inc.**  
**P.O. Box 17867**  
**Shreveport, LA 71138-0867**

Fax: (318) 687-9923 Phone: (318) 687-3771  
Project: **09-16368, Olin E. Teague VAMC Reinspection**

Customer ID: ALT50  
Customer PO:  
Received: 11/11/09 10:00 AM  
EMSL Order: 260906540  
EMSL Proj: VAMC Reinspection  
Analysis Date: 11/12/2009

### Test Report: Asbestos Analysis of Bulk Materials via EPA 600/R-93/116 Method using Polarized Light Microscopy

Sample	Description	Appearance	Non-Asbestos		Asbestos
			% Fibrous	% Non-Fibrous	% Type
OT-09-293-0307-Mastic 260906540-0032A	Bldg. 162	Yellow Non-Fibrous Homogeneous		100% Non-fibrous (other)	None Detected
OT-09-293-0308 260906540-0033	Bldg. 162	Black Non-Fibrous Homogeneous		96% Non-fibrous (other)	4% Chrysotile
OT-09-293-0309-Wrap 260906540-0034	Bldg. 162	White Non-Fibrous Heterogeneous	85% Cellulose	15% Non-fibrous (other)	None Detected
OT-09-293-0309-Foil Backing 260906540-0034A	Bldg. 162	Silver Non-Fibrous Heterogeneous	5% Cellulose	95% Non-fibrous (other)	None Detected
OT-09-293-0309-Insulation 260906540-0034B	Bldg. 162	Black Non-Fibrous Homogeneous		100% Non-fibrous (other)	None Detected
OT-09-293-0310 260906540-0035	Bldg. 162	Yellow Non-Fibrous Heterogeneous		100% Non-fibrous (other)	<1% Chrysotile

Mastics were inseparable- results composited.

## Analyst(s)

Jonathan Tallert (20)  
Michael Pohmann (96)

Andrei Poluchowicz,  
or other approved signatory

Due to magnification limitations inherent in PLM, asbestos fibers in dimensions below the resolution capability of PLM may not be detected. The limit of detection as stated in the method is 1%. The above test report relates only to the items tested and may not be reproduced in any form without the express written approval of EMSL Analytical, Inc. EMSL's liability is limited to the cost of analysis. EMSL bears no responsibility for sample collection activities or analytical method limitations. Interpretation and use of test results are the responsibility of the client. Samples received in good condition unless otherwise noted. This report must not be used to claim product endorsement by NVLAP or any agency of the U.S. Government.

Samples analyzed by EMSL Analytical, Inc. Chicago 2444 W. George Street, Chicago IL NVLAP Lab Code 200399-0, TX 300289