

STATEMENT OF BID ITEMS	
ITEM 1:	<p>ALL RENOVATION WORK COMPLETE AS SHOWN; WORK INCLUDES GENERAL CONSTRUCTION, ALTERATIONS, DRAINAGE, MECHANICAL AND ELECTRICAL WORK, UTILITY SYSTEMS AND NECESSARY REMOVAL OF EXISTING CONSTRUCTION AND CERTAIN OTHER ITEMS. CLOSE OFF ENTRANCES TO AFFECTED AREAS AND CONSTRUCT TEMPORARY PARTITIONS AND DOORS AS NECESSARY AT START OF CONSTRUCTION. POST PROPER SIGNAGE TO CONTROL ACCESS TO THAT AREA.</p>
ALTERNATE:	<p>DEDUCT WORK ASSOCIATED WITH RENOVATION OF PHYSICAL THERAPY AREA, OFFICE, CORRIDOR C15-3, AND STORAGE AREAS 1 AND 2.</p>

ITEM 1:
ALL RENOVATION WORK COMPLETE AS SHOWN: WORK INCLUDES GENERAL CONSTRUCTION, ALTERATIONS, DRAINAGE, MECHANICAL AND ELECTRICAL WORK, UTILITY SYSTEMS AND NECESSARY REMOVAL OF EXISTING CONSTRUCTION AND CERTAIN OTHER ITEMS. CLOSE OFF ENTRANCES TO AFFECTED AREAS AND CONSTRUCT TEMPORARY PARTITIONS AND DOORS AS NECESSARY AT START OF CONSTRUCTION. POST PROPER SIGNAGE TO CONTROL ACCESS TO THAT AREA.

ALTERNATE:

DEDUCT WORK ASSOCIATED WITH RENOVATION OF PHYSICAL THERAPY AREA, OFFICE, CORRIDOR C1S-3, AND STORAGE AREAS 1 AND 2.

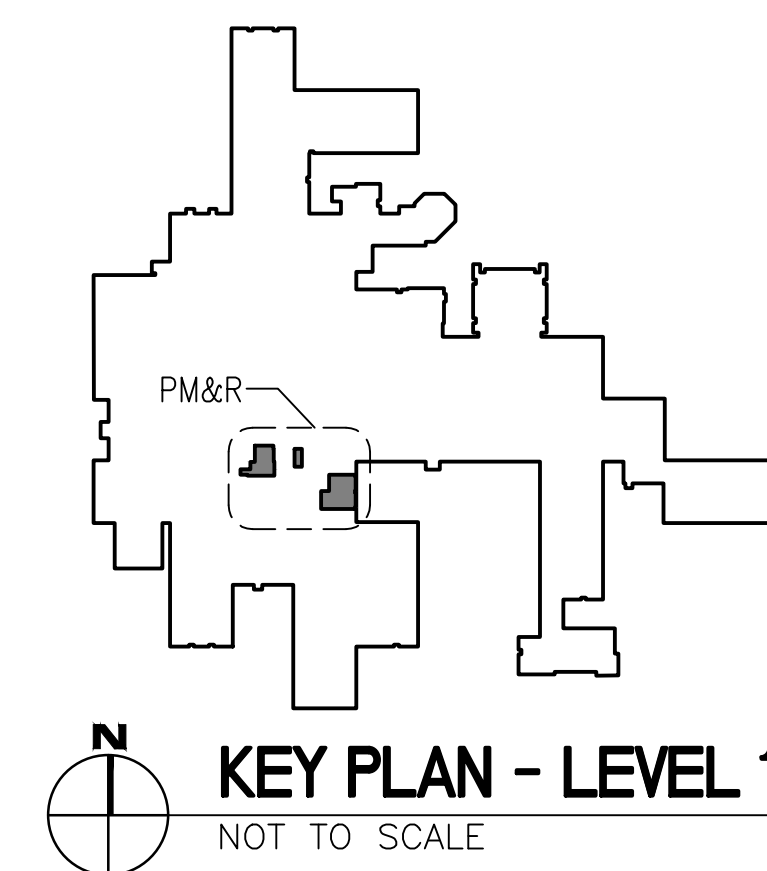
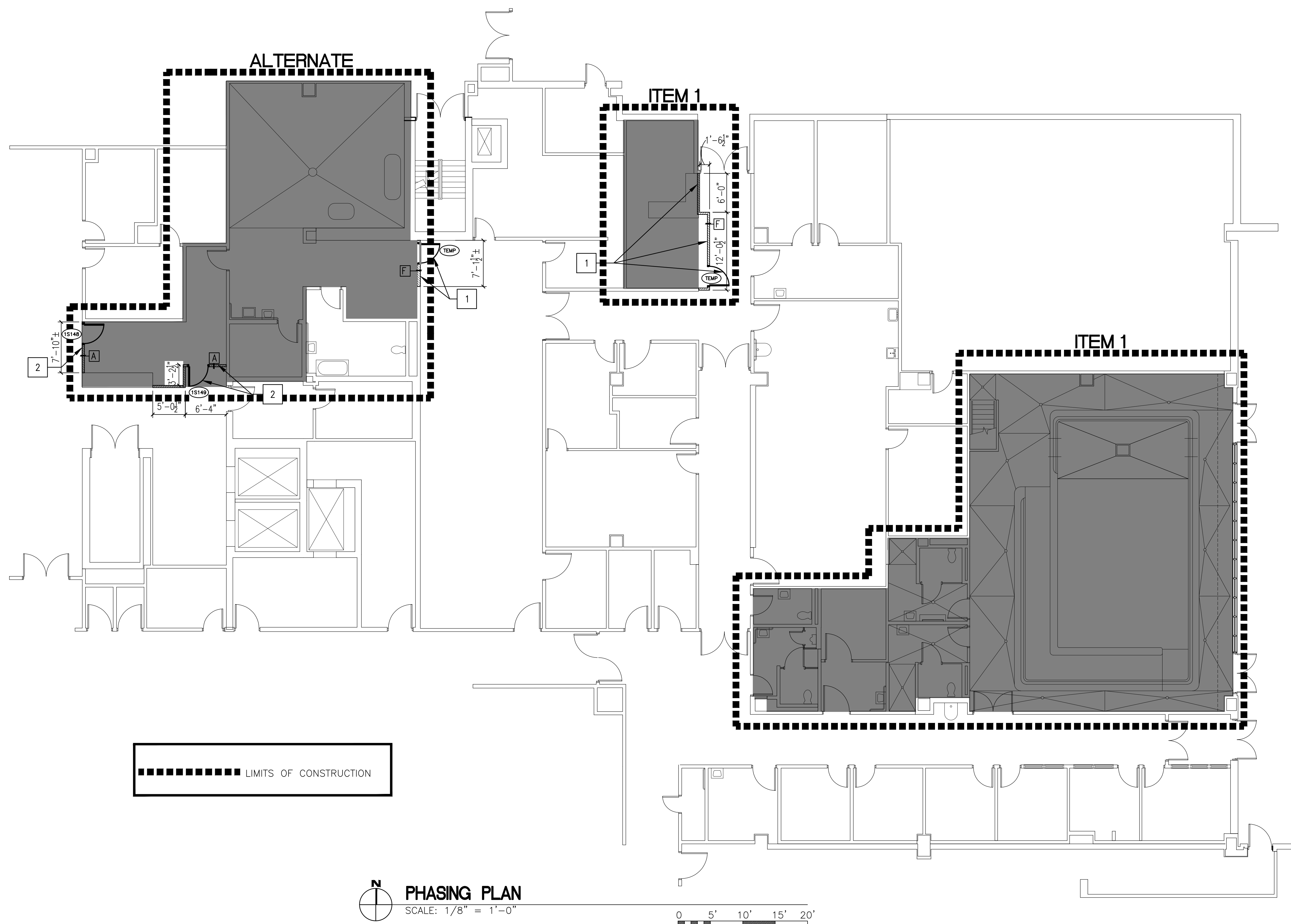
(SEE WALL TYPES, SHEET AS-06 AND DOOR SCHEDULE, SHEET AS-10)

PHASING NOTE (THIS SHEET ONLY):

- 1 REMOVE AFTER CONSTRUCTION IS COMPLETE
- 2 TO REMAIN AS PART OF NEW CONSTRUCTION

PHASING NOTES
<p>1. TEMPORARILY RELOCATE OCCUPANTS AFFECTED IN ITEM 1/ALTERNATE AREA TO A SPACE AS DESIGNATED BY THE VA CONTRACTING OFFICER REPRESENTATIVE (COR).</p> <p>2. ITEM 1 AND/OR ALTERNATE SHALL BE CLOSED-OFF AS LIMITS OF CONSTRUCTION AND PROPER SIGNAGE PUT UP TO CONTROL ACCESS.</p> <p>3. CONSTRUCTION DEBRIS SHALL BE CONTAINED IN PARTITIONED AND LOCKED AREAS.</p> <p>4. COORDINATE WITH COR TO ENSURE THAT ALL WORK REQUIRING A RESTRICTION OF CORRIDOR ACCESS, REDUCTION OF CORRIDOR WIDTH, OR PATIENT DISTURBANCE IS DONE AT NIGHT OR AT A TIME THAT IS LEAST DISRUPTIVE TO NORMAL HOSPITAL OPERATING ROUTINE.</p>

1. TEMPORARILY RELOC. OCCUPANTS AFFECTED IN ITEM 1/ALTERNATE AREA TO A SPACE AS DESIGNATED BY THE VA CONTRACTING OFFICER REPRESENTATIVE (COR).
2. ITEM 1 AND/OR ALTERNATE SHALL BE CLOSED-OFF AS LIMITS OF CONSTRUCTION AND PROPER SIGNAGE PUT UP TO CONTROL ACCESS.
3. CONSTRUCTION DEBRIS SHALL BE CONTAINED IN PARTITIONED AND LOCKED AREAS.
4. COORDINATE WITH COR TO ENSURE THAT ALL WORK REQUIRING A RESTRICTION OF CORRIDOR ACCESS, REDUCTION OF CORRIDOR WIDTH, OR PATIENT DISTURBANCE IS DONE AT NIGHT OR AT A TIME THAT IS LEAST DISRUPTIVE TO NORMAL HOSPITAL OPERATING ROUTINE.

[illegible]