

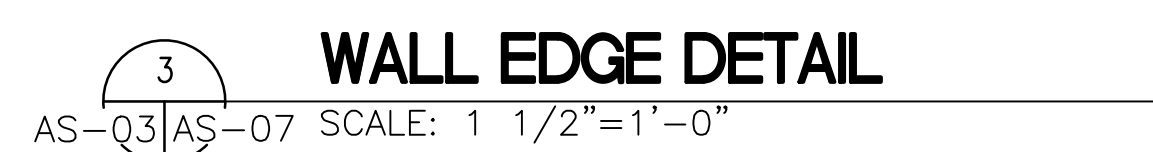
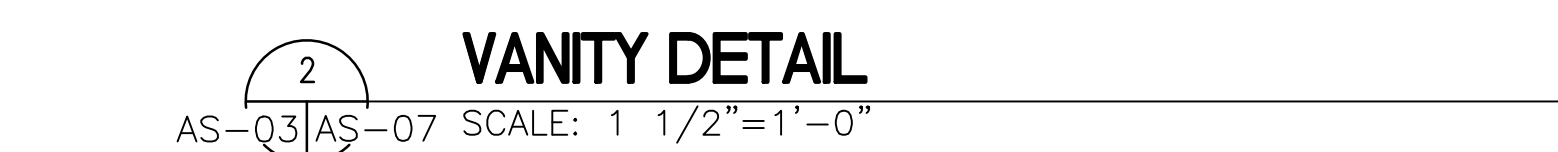
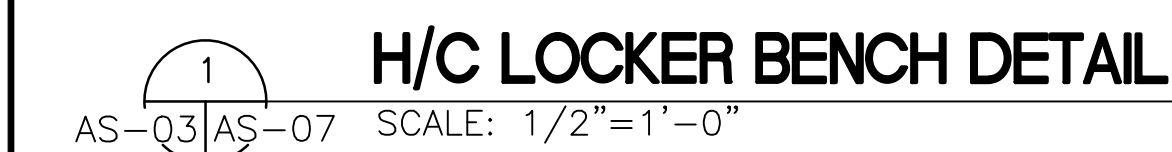
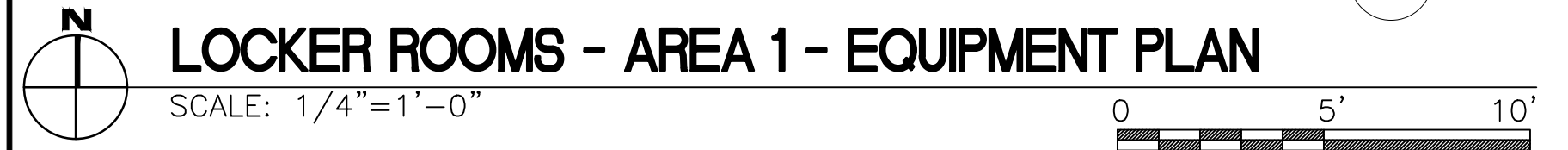
<div> <div>MAJOR EQUIPMENT LIST</div> <div>(VA FURNISHED, VA INSTALLED -</div> </div>					
EQUIPMENT PURCHASED AND INSTALLED UNDER SEPARATE CONTRACT)					
ROOM NAME	ROOM NO.	NO.	NAME	ACQ/INS	DESCRIPTION
OCUPATIONAL THERAPY	1S-108	101	NEUROCOM BALANCE MASTER	VV	SMART BALANCE MASTER
		102	NBM PC STAND	VV	
		103	NBM FREE STANDING FORCE PLATE	VV	
		104	NBM RAMP	VV	
		105	NBM OTHER	VV	
		201	GT2 BIODEx TREADMILL	VV	
		202	GT2 PRINTER STAND	VV	
		203	GT2 OFFSET UNWEIGHING	VV	#945-480, MOBILE/WILL MOVE AROUND
		301	PARALLEL BARS	VV	MIDLAND, BARIATRIC PARALLEL BARS
		302	PARALLEL BARS (2)	VV	
		401	DYNAMIC STAIR TRAINER	VV	MODEL # 8000
		501	TRAINING RAMP	VV	
		601	TOTAL GYM	VV	TOTAL GYM 1700 CLUB EXERCISE SYSTEM
			REBOUNDER	VV	IDEAL REBOUNDERS

TOILET ACCESSORY LEGEND	
GENERAL NOTES:	
1. ABBREVIATIONS ON THE PLANS INDICATE THE APPROXIMATE LOCATION OF THE ITEM. ADHERE TO ALL ADA REQUIREMENTS FOR THE INSTALLATION & MOUNTING HEIGHT OF FIXTURES.	
2. CONTRACTOR SHALL COORDINATE AND PROVIDE WOOD BLOCKING ON WALLS FOR CABINETS, GRAB BARS AND OTHER ACCESSORIES.	
CH/B	COAT HOOK AND BUMPER
GB-1	36" GRAB BAR: 1-1/4" DIA. 1-1/2" OFF FACE OF WALL FINISH. MOUNTED W/ CENTERLINE 36" AFF
GB-2	42" GRAB BAR: 1-1/4" DIA. 1-1/2" OFF FACE OF WALL FINISH. MOUNTED W/ CENTERLINE 36" AFF
GB-3	18" VERTICAL GRAB BAR: 1-1/4" DIA. 1-1/2" OFF FACE OF WALL FINISH. MOUNTED 39-41" AFF
LCKR	LOCKER FURNISHED UNDER SEPARATE CONTRACT
BCH	12"D BENCH, NON-H/P ACCESSIBLE, TOP OF BENCH AT 18" AFF
H/C BCH	20"D BENCH, H/P ACCESSIBLE, TOP OF BENCH AT 18" AFF
M1	MIRROR, WALL MOUNTED, 24" W x 40" H. MOUNT FRAME BOTTOM @ 38" AFF.
PTD	PAPER TOWEL DISPENSER; BOTTOM OF DISPENSER AT 4'-0" MAX.
S1	COUNTERTOP DROP-IN VANITY SINK
SC/R	SHOWER CURTAIN AND ROD
SD	SOAP DISPENSER, SURFACE MOUNTED. MOUNT BOTTOM OF DISPENSER 6" ABOVE SINK
SH	SHOWER WITH 3 FIBERGLASS WALLS & SHOWER BASE & 1" LIP
SH/HC	SHOWER, H/C ACCESSIBLE W/ FOLDING SEAT, 3 FIBERGLASS WALLS, 1" LIMP & SHOWER BASE
SND	SANITARY NAPKIN DISPOSAL, SURFACE MOUNTED. MOUNT UNIT TOP @ 26" AFF
TP	TOILET PARTITION
TTD	TOILET TISSUE DISPENSER, SURFACE MOUNTED. MOUNT TOP OF DISPENSER @ 24" AFF
WC	WATER CLOSET, NON-H/C ACCESSIBLE, FLOOR MOUNTED. RIM @ 15" AFF
WC/HC	WATER CLOSET, H/C ACCESSIBLE, FLOOR MOUNTED. RIM @ 18" AFF

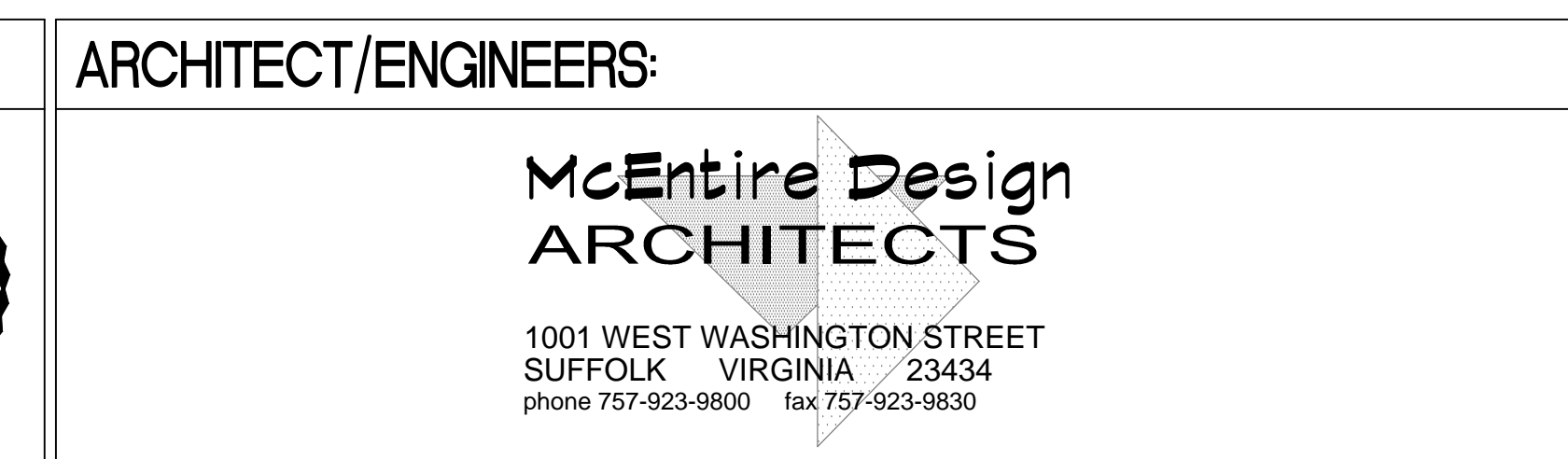
GENERAL NOTES:

1. ABBREVIATIONS ON THE PLANS INDICATE THE APPROXIMATE LOCATION OF THE ITEM. ADHERE TO ALL ADA REQUIREMENTS FOR THE INSTALLATION & MOUNTING HEIGHT OF FIXTURES.
2. CONTRACTOR SHALL COORDINATE AND PROVIDE WOOD BLOCKING ON WALLS FOR CABINETS, GRAB BARS AND OTHER ACCESSORIES.

CH/B	COAT HOOK AND BUMPER
GB-1	36" GRAB BAR: 1-1/4" DIA. 1-1/2" OFF FACE OF WALL FINISH. MOUNTED W/ CENTERLINE 36" AFF
GB-2	42" GRAB BAR: 1-1/4" DIA. 1-1/2" OFF FACE OF WALL FINISH. MOUNTED W/ CENTERLINE 36" AFF
GB-3	18" VERTICAL GRAB BAR: 1-1/4" DIA. 1-1/2" OFF FACE OF WALL FINISH. MOUNTED 39-41" AFF
LCKR	LOCKER FURNISHED UNDER SEPARATE CONTRACT
BCH	12"D BENCH, NON-H/P ACCESSIBLE, TOP OF BENCH AT 18" AFF
H/C BCH	20"D BENCH, H/P ACCESSIBLE, TOP OF BENCH AT 18" AFF
M1	MIRROR, WALL MOUNTED, 24" W x 40" H. MOUNT FRAME BOTTOM @ 38" AFF.
PTD	PAPER TOWEL DISPENSER; BOTTOM OF DISPENSER AT 4'-0" MAX.
S1	COUNTERTOP DROP-IN VANITY SINK
SC/R	SHOWER CURTAIN AND ROD
SD	SOAP DISPENSER, SURFACE MOUNTED. MOUNT BOTTOM OF DISPENSER 6" ABOVE SINK
SH	SHOWER WITH 3 FIBERGLASS WALLS & SHOWER BASE & 1" LIP
SH/HC	SHOWER, H/C ACCESSIBLE W/ FOLDING SEAT, 3 FIBERGLASS WALLS, 1" LIMP & SHOWER BASE
SND	SANITARY NAPKIN DISPOSAL, SURFACE MOUNTED. MOUNT UNIT TOP @ 26" AFF
TP	TOILET PARTITION
TTD	TOILET TISSUE DISPENSER, SURFACE MOUNTED. MOUNT TOP OF DISPENSER @ 24" AFF
WC	WATER CLOSET, NON-H/C ACCESSIBLE, FLOOR MOUNTED. RIM @ 15" AFF
WC/HC	WATER CLOSET, H/C ACCESSIBLE, FLOOR MOUNTED. RIM @ 18" AFF



	CONSULTANTS:
--	--------------



Project Title PM&R AREA RENOVATION			Project Number 652-12-113	
Location 1201 BROAD ROCK BLVD., RICHMOND, VA 23249			Building Number 500	
Date 11/4/2013			Checked CFM	Drawn KDL
			Drawing Number 500-AS-07	
			Dwg. 10 of 41	

Office of
Construction
and Facilities
Management

 Department of
Veterans Affairs