

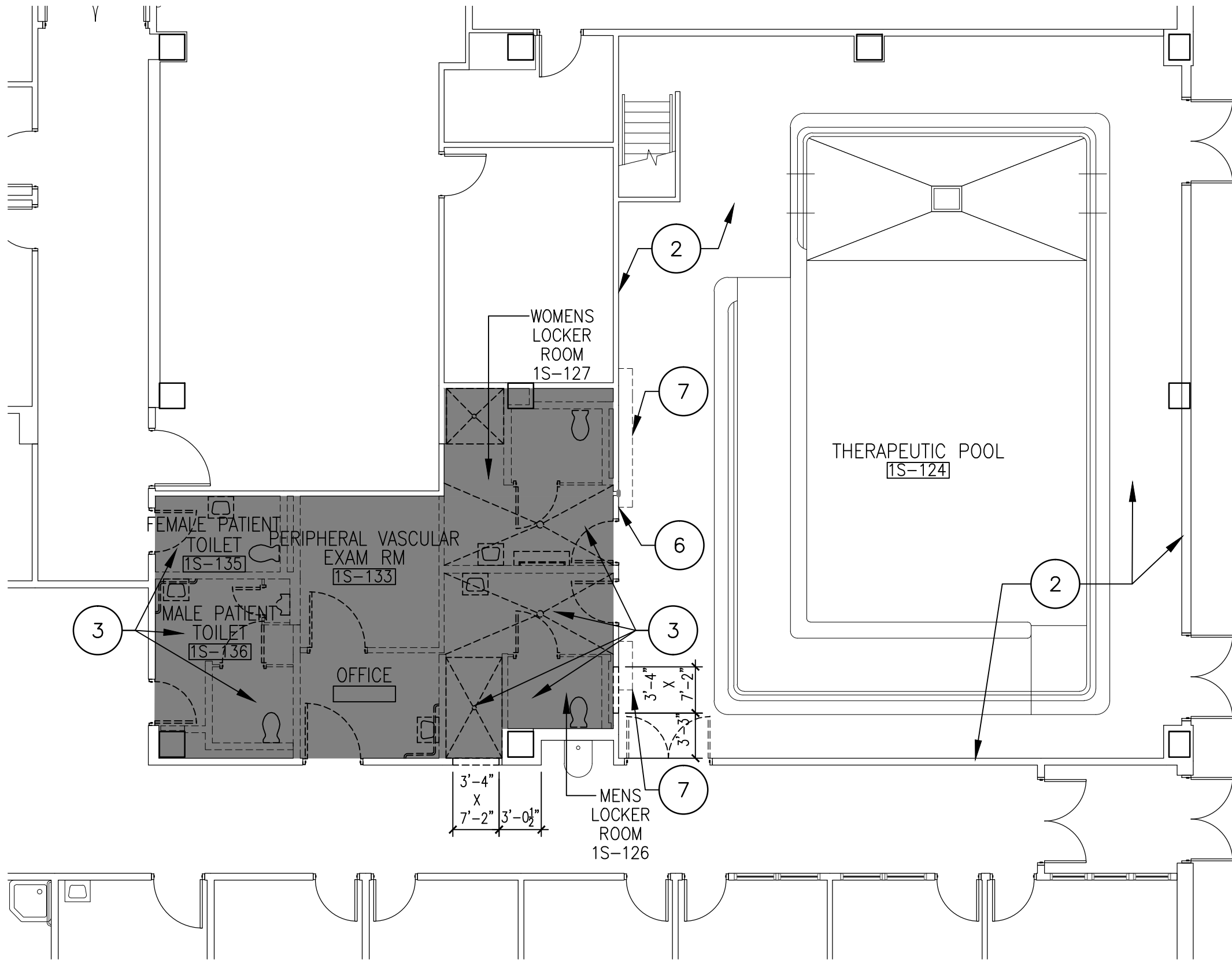
DEMOLITION NOTES

GENERAL DEMOLITION NOTES:

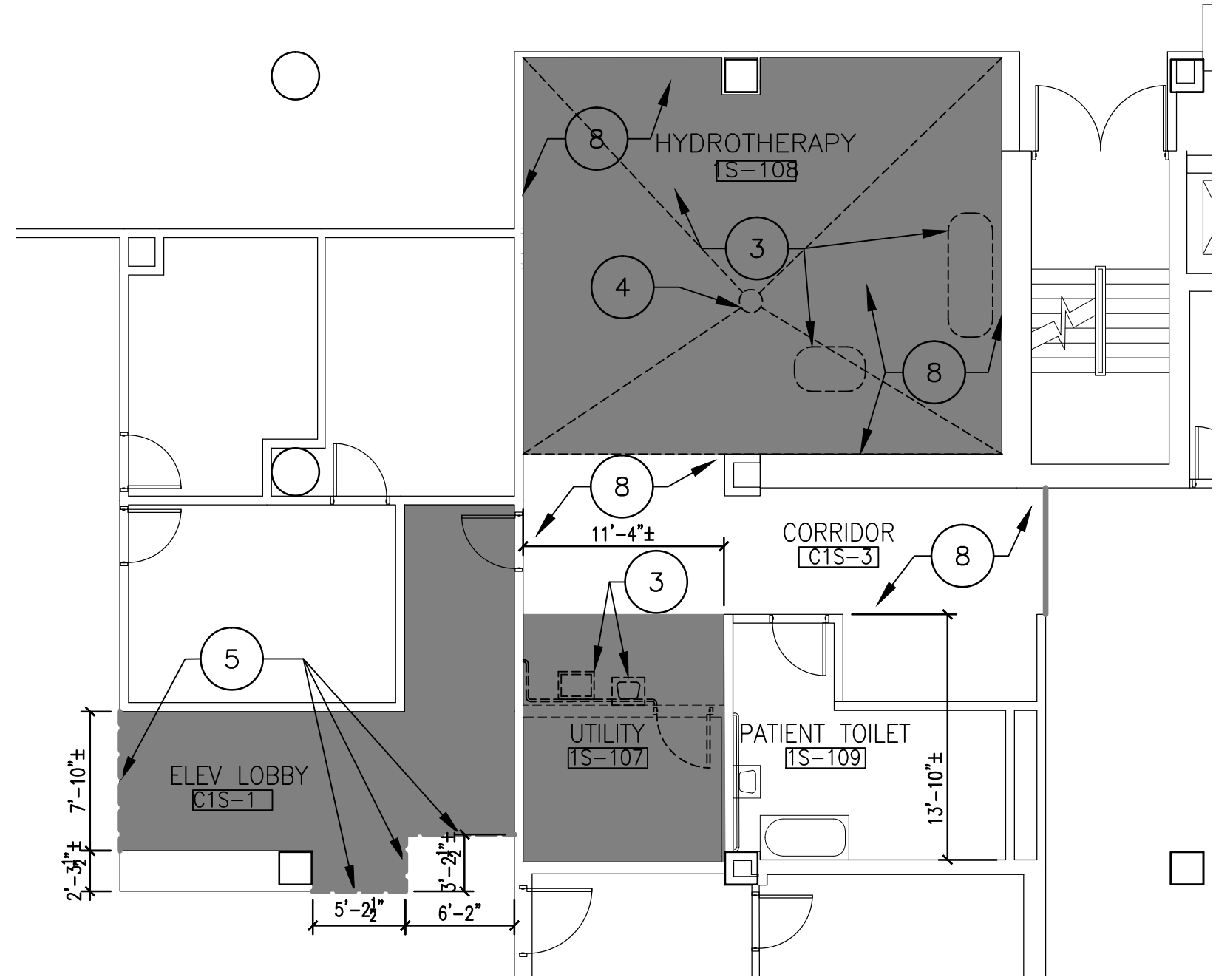
- A. REFER TO MECHANICAL, ELECTRICAL AND PLUMBING DRAWINGS FOR ADDITIONAL NOTES AND LOCATION OF ADDITIONAL ITEMS TO BE REMOVED.
- B. BEFORE PROCEEDING WITH ANY WORK ON THIS CONTRACT IT SHALL BE THE CONTRACTOR'S RESPONSIBILITY TO PROVIDE ALL NECESSARY SAFEGUARDS TO MAINTAIN ALL PARTS OF THE PROJECT UNDER THIS CONTRACT IN A SAFE CONDITION AT ALL TIMES DURING THE PROCESS OF CONSTRUCTION AND TO PROTECT FROM DAMAGE THOSE PORTIONS OF THE EXISTING BUILDING WHICH ARE TO REMAIN. CONTRACTOR SHALL REPAIR DAMAGES CAUSED BY DEMOLITION WORK.
- C. WHERE DEMOLITION IS INDICATED ON THE DRAWINGS, OR REQUIRED FOR INSTALLATION OF NEW CONSTRUCTION, REMOVE EXISTING CONSTRUCTION (I.E.--AREAS OF FLOORS, WALLS CEILINGS, ETC.) AS REQUIRED TO PERFORM THE WORK INDICATED.
- D. PATCH ALL HOLES IN WALLS, FLOORS AND CEILING AND OTHER PARTS OF THE STRUCTURE AFFECTED BY THIS CONTRACT REGARDLESS OF WHETHER OR NOT MATERIAL OR EQUIPMENT IS REMOVED OR REPLACED. HOLES SHALL BE FILLED, SEALED, PAINTED, CAULKED OR PLUGGED NEATLY WITH ORIGINAL TYPE OF MATERIALS TO MATCH THE EXISTING PART OF THE STRUCTURE AFFECTED. PAINT TO MATCH EXISTING COLOR.
- E. REFER TO ASBESTOS REPORT. FOLLOW SPECIFIED ABATEMENT AND DISPOSAL PROCEDURES.
- F. THE DEMOLITION PLAN DRAWINGS ARE INTENDED TO SHOW THE GENERAL CONDITIONS, WHICH ARE EXPECTED TO OCCUR. VERIFY ALL CONDITIONS BEFORE PROCEEDING WITH THE DEMOLITION WORK IN ANY AREA. DEMOLITION OF DOORS, WINDOWS, CABINETRY, FINISHES, PARTITIONS, OR ANY OTHER NONSTRUCTURAL ITEMS MAY PROCEED AS INDICATED. WHERE DISCREPANCIES INVOLVE STRUCTURAL ITEMS, REPORT SUCH DIFFERENCES TO THE ARCHITECT AND SECURE INSTRUCTIONS BEFORE PROCEEDING IN THE AFFECTED AREA.
- G. REMOVE ALL FURNISHINGS AND EQUIPMENT BEFORE START OF ANY DEMOLITION WORK. COORDINATE STORAGE, SALVAGE AND/OR RE-USE WITH THE VETERANS AFFAIRS CONTRACTING OFFICER'S REPRESENTATIVE (COR).
- H. THE GENERAL CONTRACTOR IS RESPONSIBLE FOR PATCHING AND FIRESTOPPING OPENINGS LEFT BY THE REMOVAL OF PLUMBING, MECHANICAL AND ELECTRICAL PIPES, DUCTS, CONDUITS, ETC.
- I. THE CONTRACTOR SHALL PROVIDE WALK-OFF MATS AT EACH DOOR LEADING FROM THE CONSTRUCTION AREA INTO OTHER PARTS OF THE BUILDING.
- J. PROVIDE SIGNAGE ON ALL DOORS OR ENTRY POINTS LEADING INTO THE CONSTRUCTION AREA STATING "CONSTRUCTION AREA - NO ADMITTANCE".

DEMOLITION LEGEND AND NOTES (THIS SHEET ONLY)

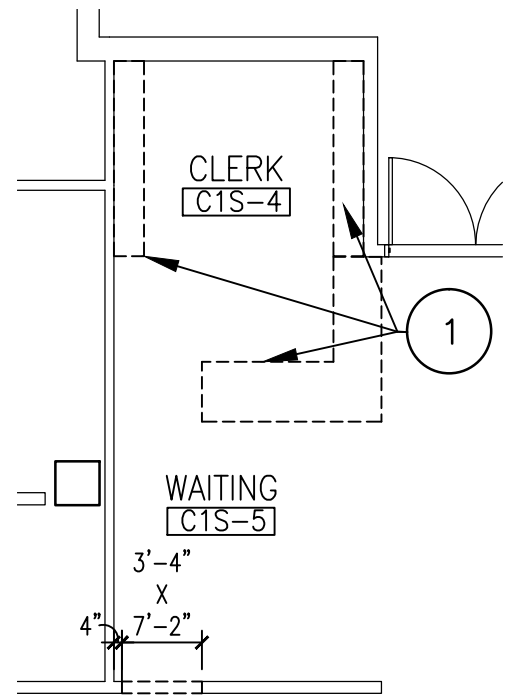
- ITEMS (WALLS, DOORS WINDOWS, FIXTURES, ETC.) SHOWN DASHED SHALL BE REMOVED EXCEPT WHERE NOTED OTHERWISE.
- ITEMS (WALLS, DOORS WINDOWS, FIXTURES, ETC.) SHOWN AS SOLID LINES TO REMAIN.
- 1 REMOVE CABINETS, SHELVING, DISPLAY CASES AND OTHER FURNISHINGS, COMPLETE.
- 2 REMOVE LOSE AND DAMAGED CERAMIC OR PORCELAIN TILES ON FLOOR AND WALL COMPLETE FOR INSTALLATION OF RESINOUS SURFACES IN NEW WORK.
- 3 REMOVE PLUMBING FIXTURES, TOILET ACCESSORIES, TOILET PARTITIONS, PIPES AND OTHER RELATED ITEMS COMPLETE. SEE PLUMBING DRAWINGS FOR ADDITIONAL NOTES AND INSTRUCTIONS.
- 4 REMOVE DRAIN AND PIPING COMPLETE - SEE PLUMBING DRAWINGS.
- 5 REMOVE CERAMIC FLOOR TILE AT LOCATION OF WALL IN NEW WORK.
- 6 REMOVE PORTION OF GWB TO THE EXTENT NECESSARY TO INSTALL PLUMBING IN NEW WORK. SEE PLUMBING DRAWINGS.
- 7 REMOVE EXISTING LOCKERS COMPLETE.
- 8 REMOVE EXISTING TILE COMPLETE.
- REMOVE FLOOR FINISHES, WALL AND CEILING FINISHES COMPLETE.
- EXISTING FINISHES TO REMAIN.



FIRST FLOOR PLAN - AREA 1 - DEMOLITION
SCALE: 1/8"=1'-0"

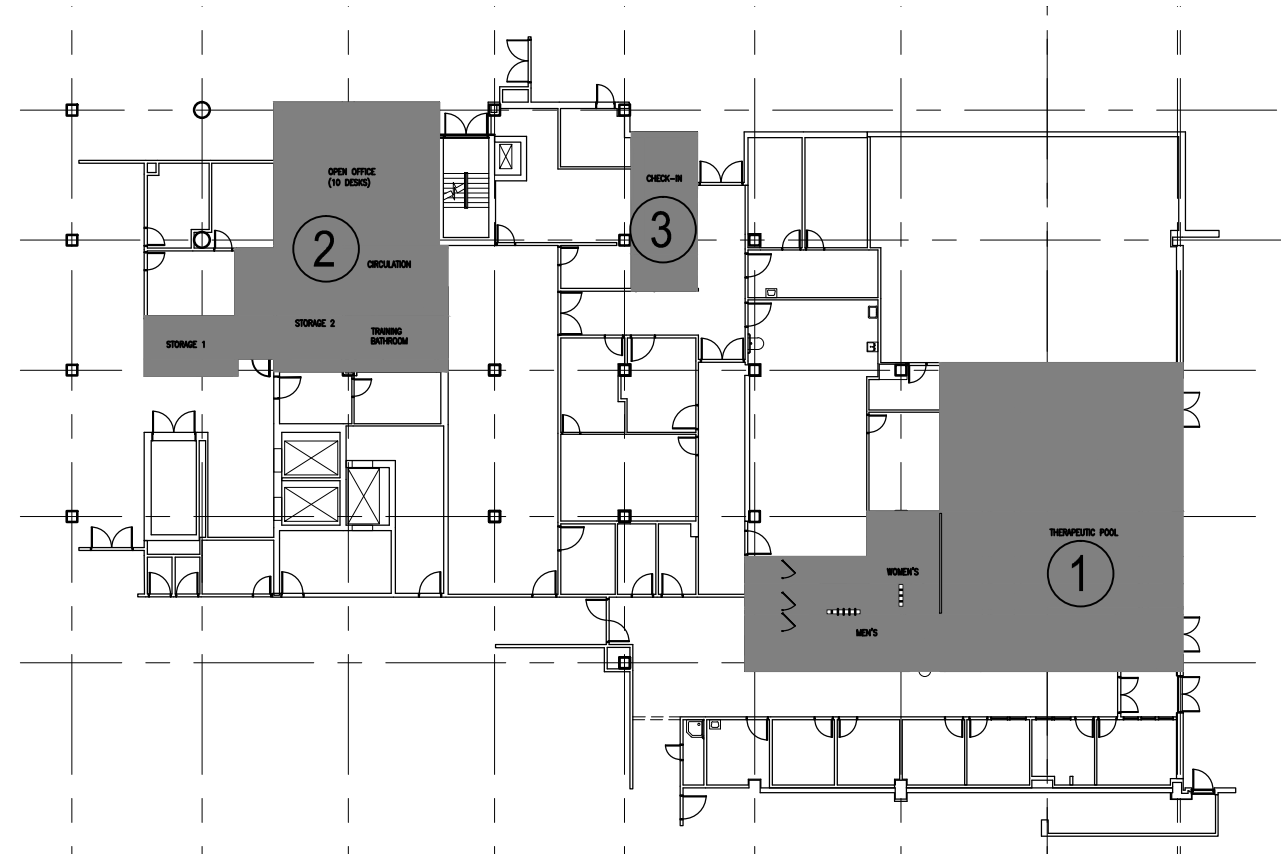


FIRST FLOOR PLAN - AREA 2 - DEMOLITION
SCALE: 1/8"=1'-0"



FIRST FLOOR PLAN - AREA 3 - DEMOLITION
SCALE: 1/8"=1'-0"

| EXISTING FINISH SCHEDULE | | | | | | | | | | | | | | |
|--------------------------|---------------------------------------|-------|------|---------------|--------|------------|--------|-----------|--------|-----------|--------|-------------|--------|-------|
| ROOM NAME | RM. NO. | FLOOR | BASE | NORTH WALL | | SOUTH WALL | | EAST WALL | | WEST WALL | | CEILING | | NOTES |
| | | | | MAT. | FINISH | MAT. | FINISH | MAT. | FINISH | MAT. | FINISH | MAT./FINISH | HEIGHT | |
| ELEV. LOBBY | C1S-1 | CT | CT | GWB | PT | GWB | PT | GWB | PT | GWB | PT | SPD. GWB | 9'-0" | |
| CORRIDOR | C1S-3 | CT | CT | GWB | PT | CT/GWB | PT | GWB | PT | CT/GWB | PT | GWB | 8'-0" | |
| CLERK | C1S-4 | CPT | VB | GWB | PT | GWB | PT | GWB | PT | GWB | PT | 2X2 ACT | 9'-0" | |
| WAITING | C1S-5 | CPT | VB | GWB | PT | GWB | PT | GWB | PT | GWB | PT | 2X2 ACT | 9'-0" | |
| UTILITY | 1S-107 | CT | CT | - | CT | - | CT | - | CT | - | CT | 2X4 ACT | 9'-0" | |
| HYDROTHERAPY | 1S-108 | CT | CT | - | CT | - | CT | - | CT | - | CT | GWB | 9'-0" | |
| THERAPEUTIC POOL | 1S-124 | CT | CT | - | CT | - | CT | CT/GWB | PT | - | CT | SPD. METAL | 12'-0" | |
| MEN'S LOCKER RM. | 1S-126 | CT | CT | - | CT | - | CT | - | CT | - | CT | GWB | 8'-0" | |
| WOMEN'S LOCKER RM. | 1S-127 | CT | CT | - | CT | - | CT | - | CT | - | CT | GWB | 8'-0" | |
| PERIPHERAL VASC. EXAM | 1S-133 | VCT | VB | GWB | PT | GWB | PT | GWB | PT | GWB | PT | 2X4 ACT | 9'-0" | |
| FEMALE PATIENT TOILET | 1S-135 | CT | CT | GWB | PT | GWB | PT | GWB | PT | GWB | PT | GWB | 8'-0" | |
| MALE PATIENT TOILET | 1S-136 | CT | CT | GWB | PT | GWB | PT | GWB | PT | GWB | PT | GWB | 8'-0" | |
| OFFICE | - | VCT | VB | GWB | PT | GWB | PT | GWB | PT | GWB | PT | 2X4 ACT | 9'-0" | |
| FINISH LEGEND: | | | | FINISH NOTES: | | | | | | | | | | |
| ACT | ACOUSTIC CEILING TILE | | | | | | | | | | | | | |
| CT | CERAMIC TILE | | | | | | | | | | | | | |
| GWB | GYPSUM WALL BOARD | | | | | | | | | | | | | |
| PT | PAINT | | | | | | | | | | | | | |
| VB | VINYL BASE | | | | | | | | | | | | | |
| SPD. METAL | SUSPENDED METAL LINEAR CEILING SYSTEM | | | | | | | | | | | | | |
| VCT | VINYL COMPOSITION TILE | | | | | | | | | | | | | |
| SPD. GWB | SUSPENDED GWB CEILING | | | | | | | | | | | | | |
| CPT | CARPET | | | | | | | | | | | | | |



KEY PLAN - PMR
NOT TO SCALE

| | | | | | | | | | | | | | | | |
|-----------------------------------------------------------|-------|------------|-------|--------------|-----------------------------------------------------------------------------------------------|--|---------------------------|--|--------------------------------------------------------|--|---------------------------------------|--|------------------------------|--|------------------------------------------------------------------------------------|
| <table><tr><td>Revisions:</td><td>Date:</td></tr></table> | | Revisions: | Date: | CONSULTANTS: | | | ARCHITECT/ENGINEERS: | | Drawing Title DEMOLITION PLANS, NOTES, AND SCHEDULE | | Project Title PM&R AREA RENOVATION | | Project Number 652-12-113 | | Office of Construction and Facilities Management Department of Veterans Affairs |
| Revisions: | Date: | | | | | | | | | | | | | | |
| | | | | | 1001 WEST WASHINGTON STREET SUFFOLK, VIRGINIA 23434 phone 757-923-9800 fax 757-923-9830 | | Approved Project Director | | Location 1201 BROAD ROCK BLVD., RICHMOND, VA 23249 | | Building Number 500 | | | | |
| | | | | | | | | | Date 11/4/2013 | | Checked CFM | | Drawn KDL | | |
| | | | | | | | | | | | Drawing Number 500-AS-01 | | Dwg. 4 of 41 | | |