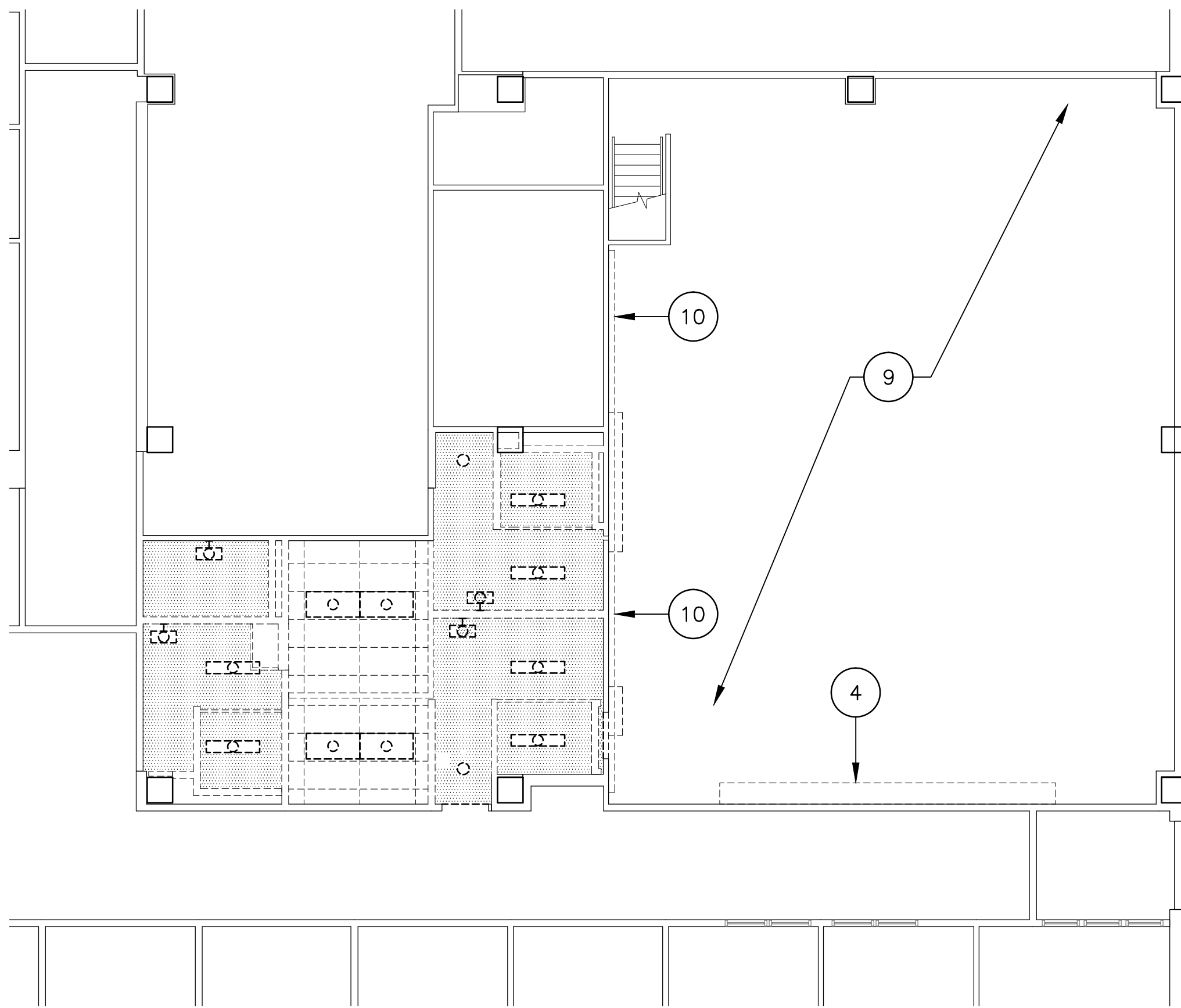
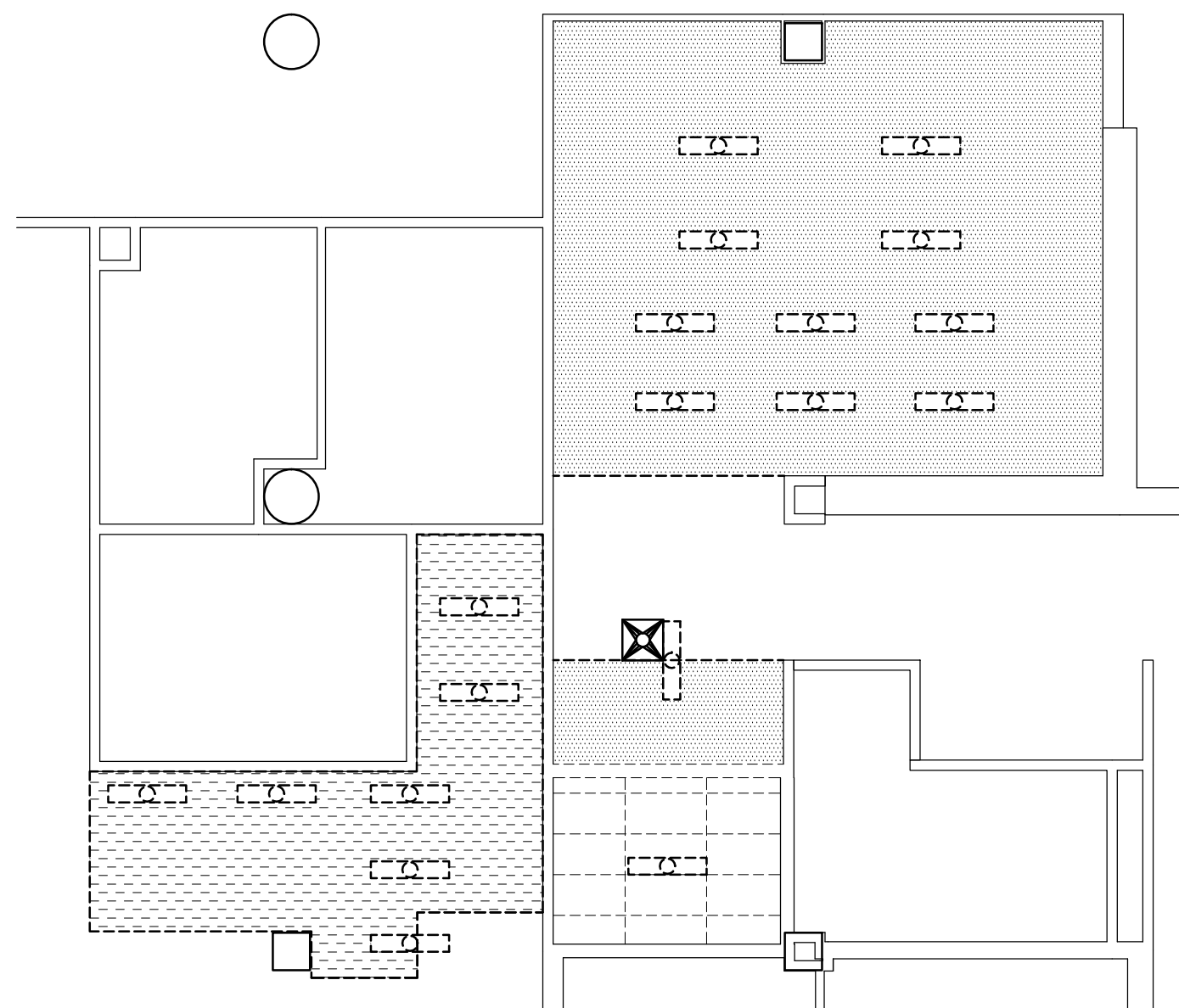
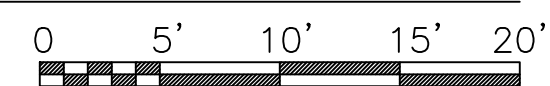


three inches = one foot  
one and one half inches = one foot  
one inch = one foot  
three quarters inch = one foot  
one half inch = one foot  
three eighths inch = one foot  
one quarter inch = one foot  
one eighth inch = one foot  
one eighth inch = one foot



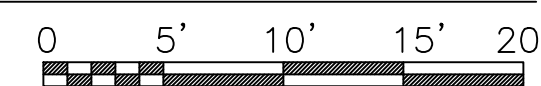
REFLECTED CEILING PLAN - AREA 1 - DEMOLITION

SCALE: 1/8"=1'-0"



REFLECTED CEILING PLAN - AREA 2 - DEMOLITION

SCALE: 1/8"=1'-0"

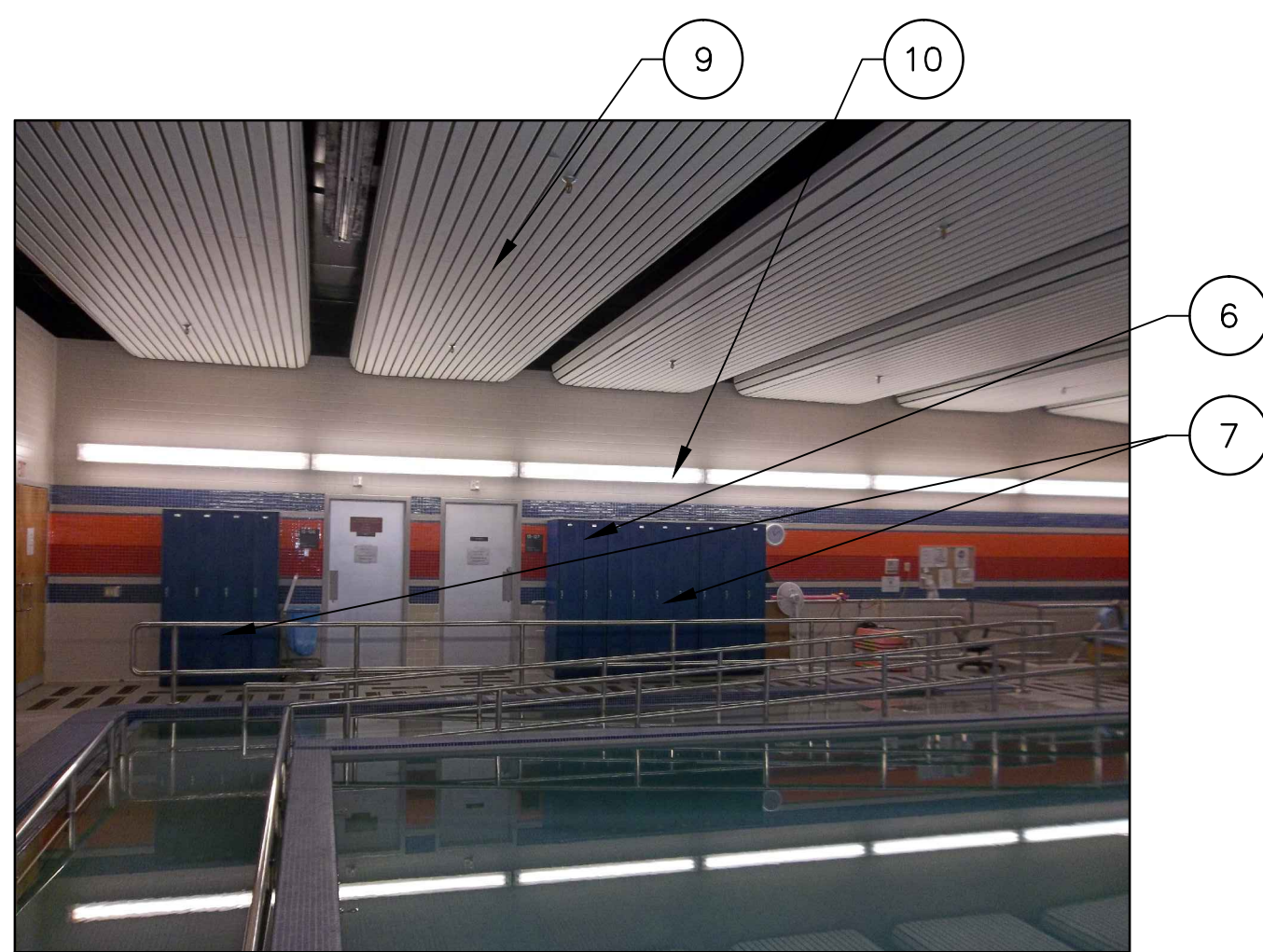


DEMOLITION LEGEND AND NOTES (THIS SHEET ONLY)

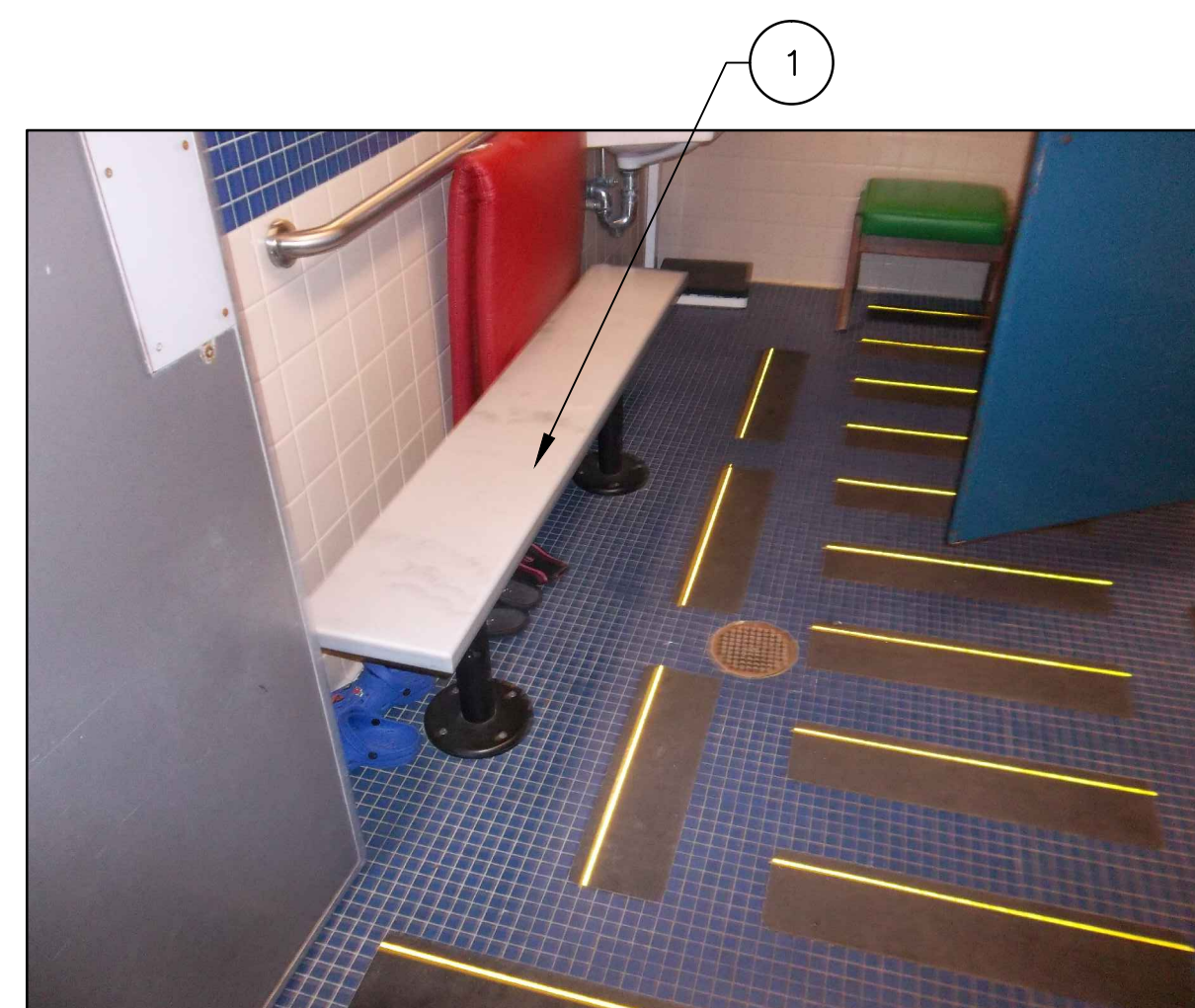
- ITEMS (WALLS, DOORS, WINDOWS, FIXTURES, ETC.) SHOWN DASHED SHALL BE REMOVED EXCEPT WHERE NOTED OTHERWISE.
- ITEMS (WALLS, DOORS, WINDOWS, FIXTURES, ETC.) SHOWN AS SOLID LINES TO REMAIN.
- 1 REMOVE CABINETS, SHELVING, DISPLAY CASES AND OTHER FURNISHINGS, COMPLETE.
  - 2 REMOVE LOOSE AND DAMAGED CERAMIC OR PORCELAIN TILES ON FLOOR AND WALL COMPLETE AND ALL SURFACE APPLIED TACTILE RESURFACE REMAINING TILE AS REQUIRED TO RECEIVE RESINOUS FLOORING IN NEW WORK.
  - 3 REMOVE PLUMBING FIXTURES, TOILET ACCESSORIES, TOILET PARTITIONS, PIPES AND OTHER RELATED ITEMS COMPLETE. SEE PLUMBING DRAWINGS FOR ADDITIONAL NOTES AND INSTRUCTIONS.
  - 4 REMOVE EXISTING EQUIPMENT- SAVE AND PROTECT FOR USE IN NEW WORK.
  - 5 REMOVE CERAMIC FLOOR TILE AT LOCATION OF WALL IN NEW WORK.
  - 6 REMOVE PORTION OF GWB TO THE EXTENT NECESSARY TO INSTALL PLUMBING IN NEW WORK. SEE PLUMBING DRAWINGS.
  - 7 REMOVE EXISTING LOCKERS COMPLETE.
  - 8 REMOVE EXISTING TILE COMPLETE.
  - 9 REMOVE EXISTING METAL LINEAR PANELS - SAVE AND PROTECT FOR REATTACHMENT IN NEW WORK.
  - 10 REMOVE EXISTING LIGHTS - SAVE AND PROTECT FOR USE IN NEW WORK.

REELECTED CEILING DEMOLITION LEGEND

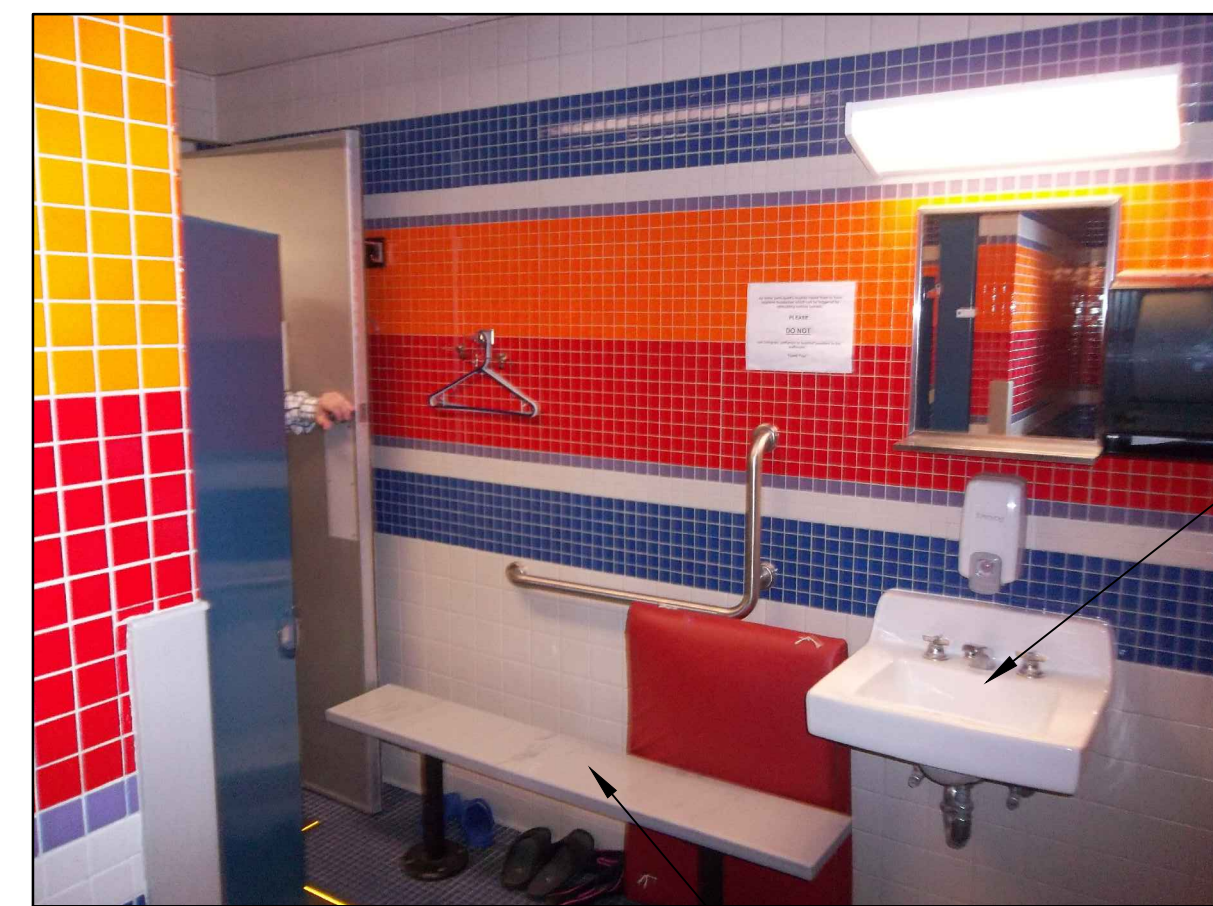
- EXISTING DIFFUSER TO BE REMOVED
- EXISTING LIGHT FIXTURE TO BE REMOVED
- EXISTING RETURN AIR GRILLE TO BE REMOVED
- EXISTING 2'X2' ACT GRID TO BE REMOVED
- EXISTING 2'X4' ACT GRID TO BE REMOVED
- EXISTING GWB CEILING TO BE REMOVED
- EXISTING SUSPENDED GWB CEILING TO BE REMOVED
- EXISTING FINISHES TO REMAIN.
- PHOTO VIEW - SEE EXISTING ON SHEET AS02



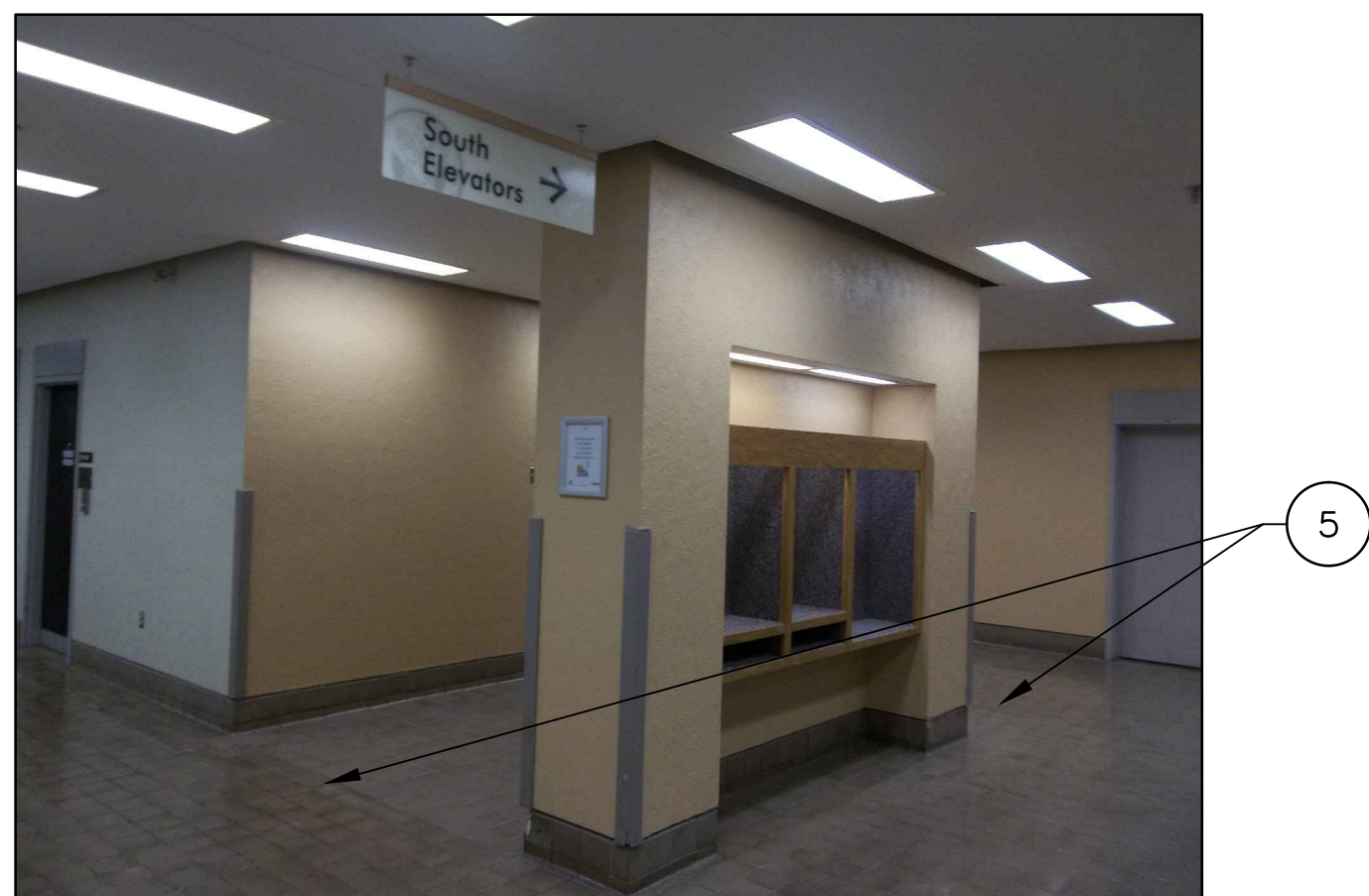
P1 VIEW AT THERAPUETIC POOL



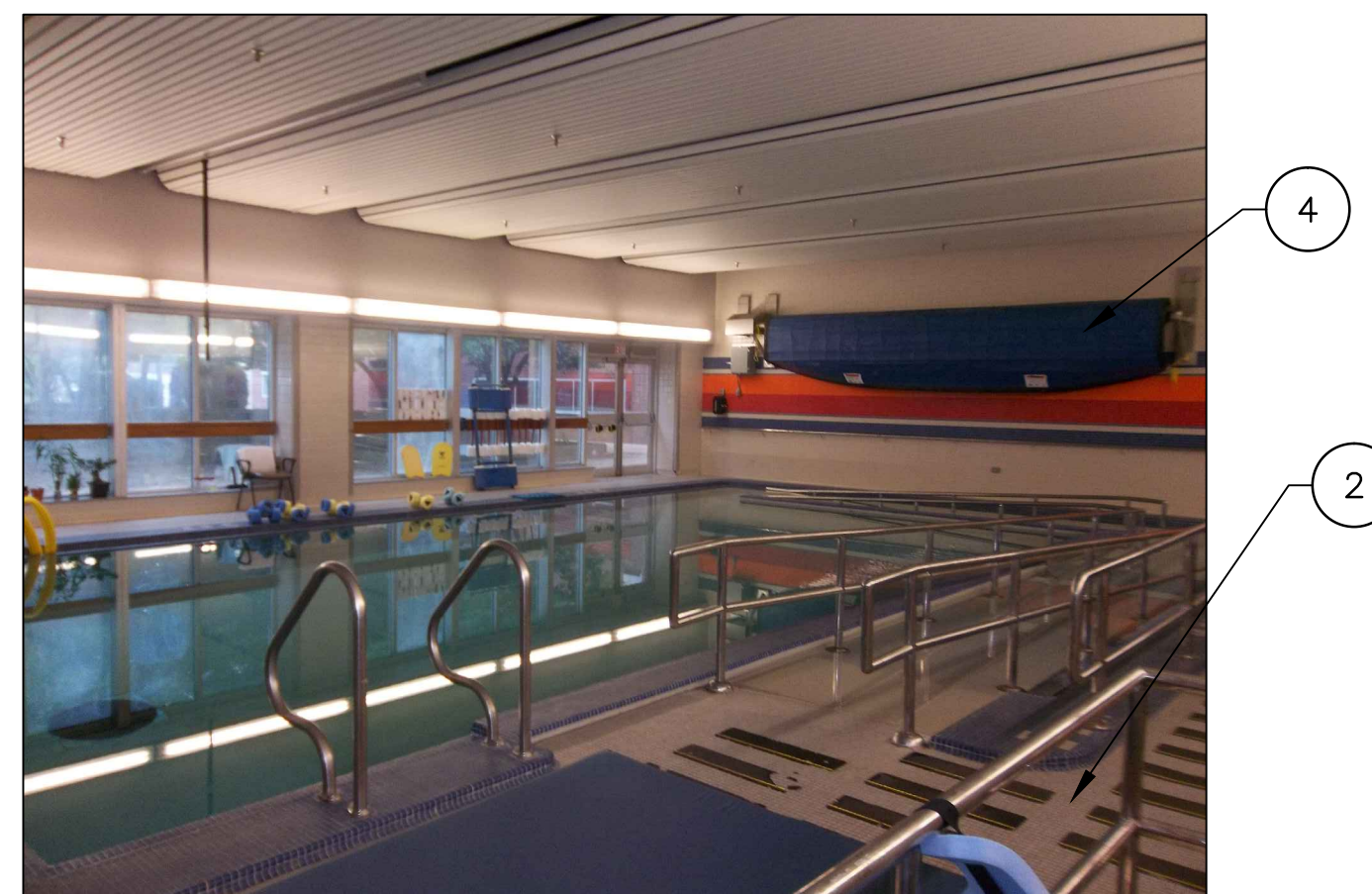
P2 VIEW AT LOCKER ROOM



P3 VIEW AT LOCKER ROOM



P4 VIEW AT LOBBY



P5 VIEW AT LOBBY



P6 VIEW AT CORRIDOR C1S-3

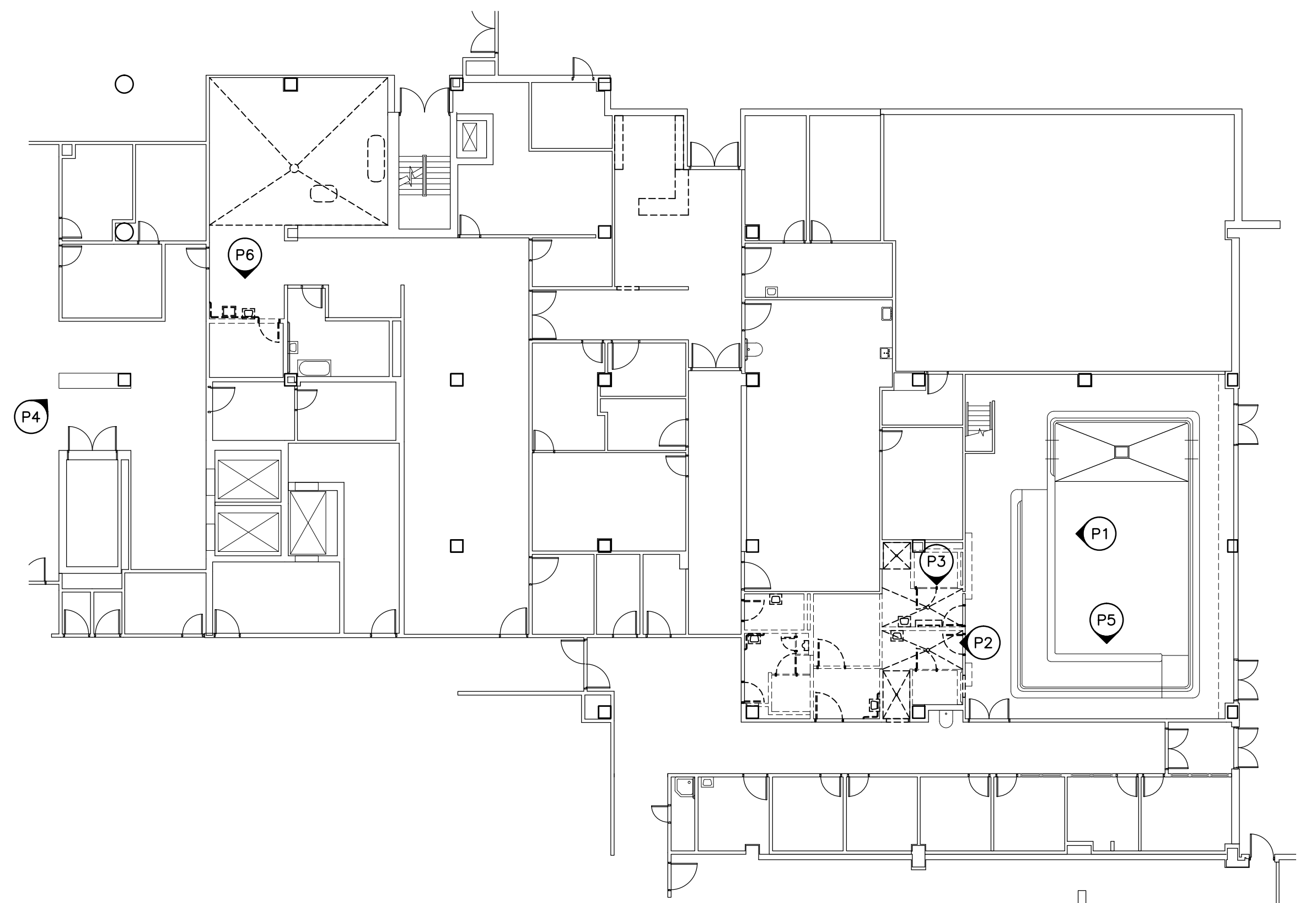


PHOTO KEY PLAN

NOT TO SCALE

Scale: 1/8"=1'-0"

CONSULTANTS:			ARCHITECT/ENGINEERS:		Drawing Title REFLECTED CEILING DEMOLITION PLAN, AND PHOTOS	Project Title PM&R AREA RENOVATION		Project Number 652-12-113		Office of Construction and Facilities Management Department of Veterans Affairs
			McEntire Design ARCHITECTS 1001 WEST WASHINGTON STREET SUFFOLK, VIRGINIA 23434 phone 757-923-9800 fax 757-923-9830		Approved Project Director	Location 1201 BROAD ROCK BLVD., RICHMOND, VA 23249		Building Number 500		
Revisions:		Date		Date		Date		Drawing Number 500-AS-02		Dwg. 5 of 41