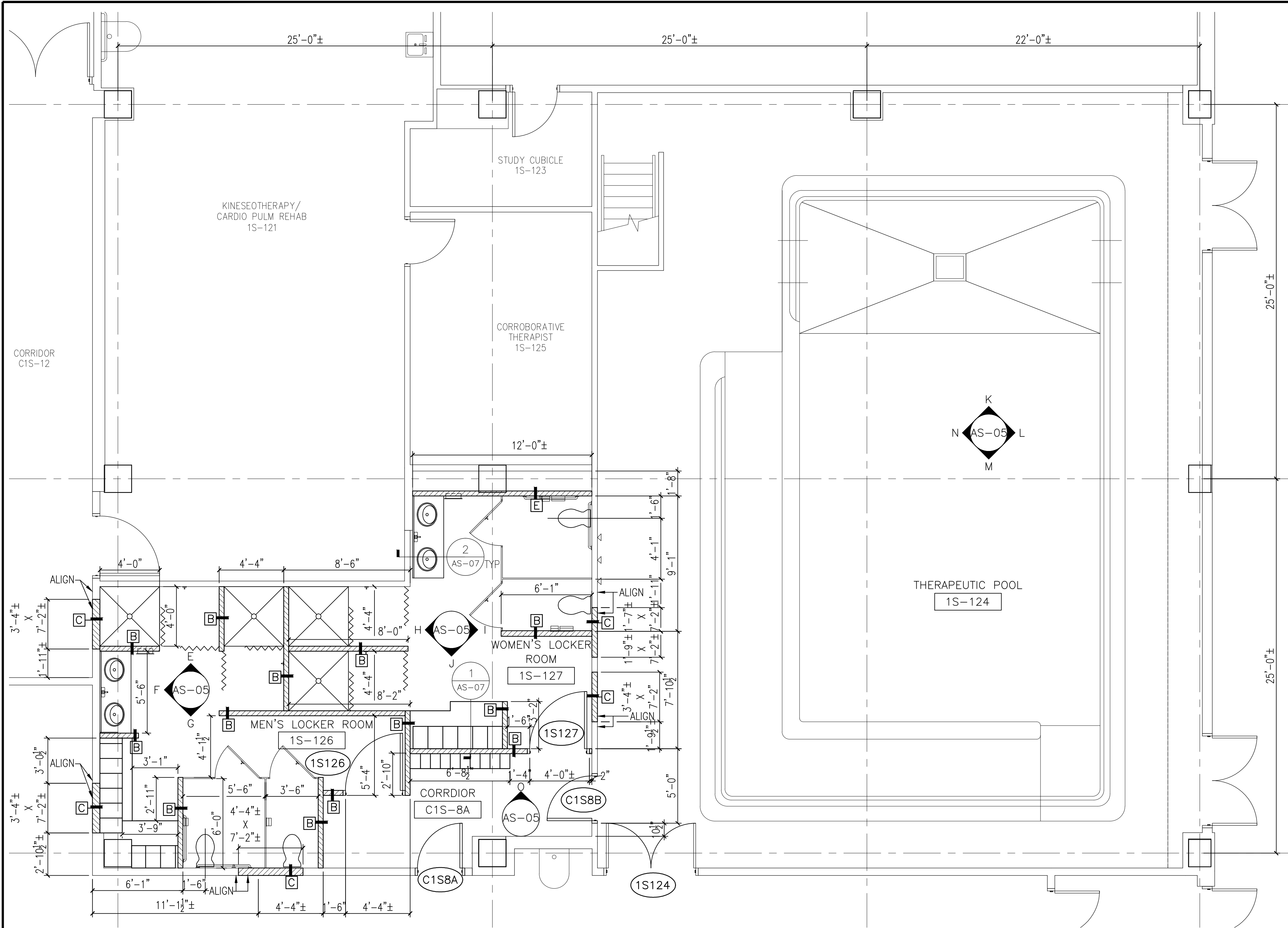
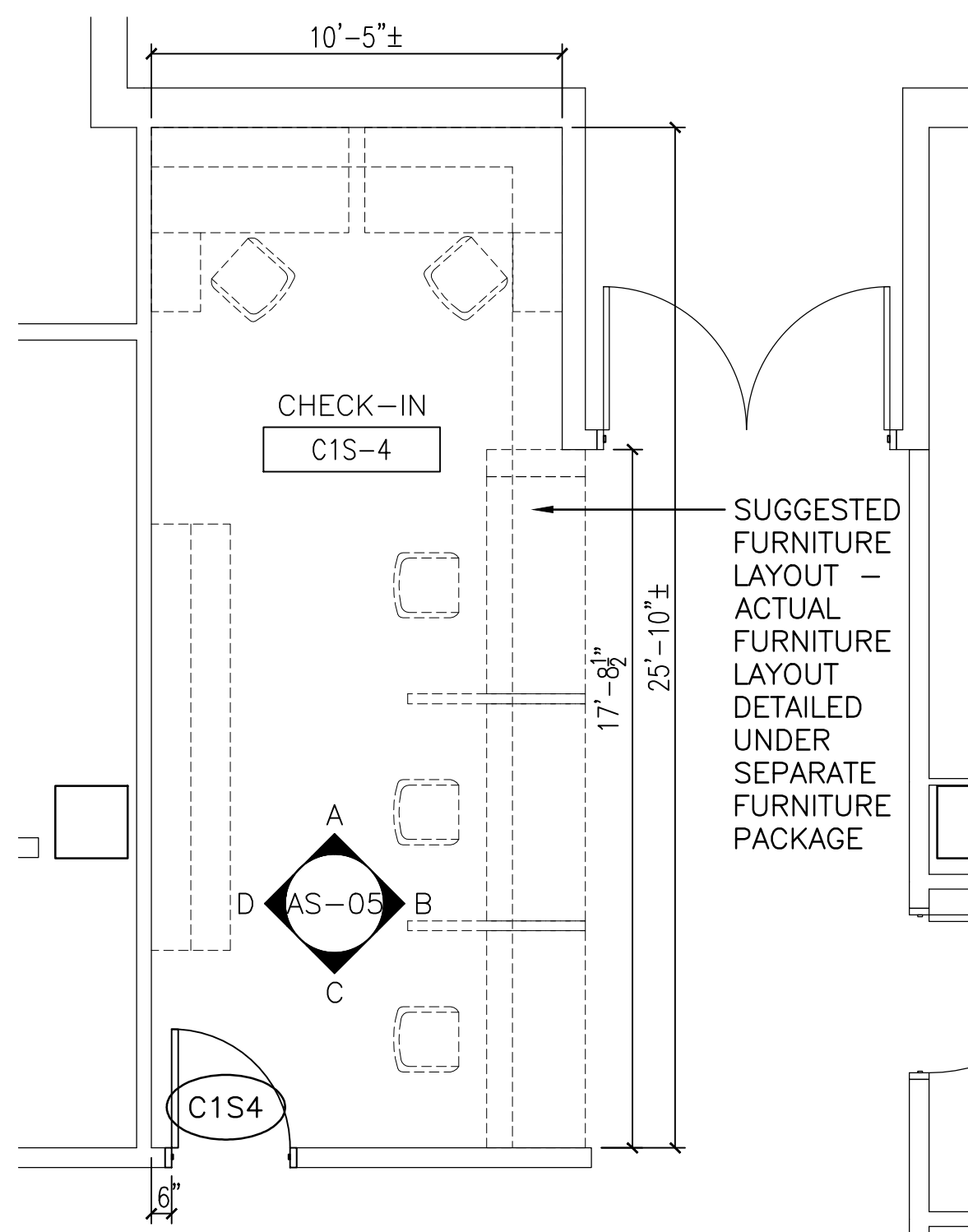
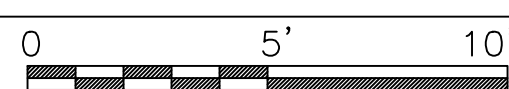


three inches = one foot
one and one half inches = one foot
one inch = one foot
three quarters inch = one foot
three eighths inch = one foot
one half inch = one foot
one quarter inch = one foot
one eighth inch = one foot



FIRST FLOOR PLAN - AREA 1

SCALE: 1/4"=1'-0"



FIRST FLOOR PLAN - AREA 3

SCALE: 1/4"=1'-0"

CONSULTANTS:

NEW WORK NOTES

GENERAL WORK NOTES:

1. REFER TO MECHANICAL, ELECTRICAL AND PLUMBING DRAWINGS FOR ADDITIONAL WORK NOTES. CONTRACTOR SHALL COORDINATE ALL "V.V." WORK (VA FURNISHED / VA INSTALLED).
2. UNLESS OTHERWISE NOTED, ALL DOORS SHALL HAVE 6" JAMB.
3. FOR WALL CONSTRUCTION TYPES, SEE SHEET AS-06.
4. PATCH CONCRETE FLOOR AFFECTED BY THE REMOVAL OF EXISTING WALLS AND OTHER ITEMS. CLEAN AND PREPARE TO RECEIVE FLOOR FINISH - SEE FINISH SCHEDULE.
5. FOR WALLS AND OTHER ITEMS THAT ARE TO REMAIN, REPAINT OR PROVIDE FINISHES TO MATCH ADJACENT FINISHES. REPAINT WINDOW AND DOOR TRIMS/FRAMES. REPLACE BASE AS REQUIRED - SEE FINISH SCHEDULE. REPAIR/PATCH HOLES.
6. WHERE MECHANICAL DUCTS/PENETRATIONS AND/OR MECHANICAL EQUIPMENT, ETC. ARE BEING REMOVED, REPLACED, RELOCATED, AND/OR RESIZED, PROVIDE SEALS AND FLASHING AS NECESSARY. PATCH HOLES RESULTING FROM THESE EQUIPMENT REMOVAL. COORDINATE LOCATIONS WITH MECHANICAL DRAWINGS.
7. PROVIDE NECESSARY BLOCKING AND REINFORCEMENT FOR CABINETS, TOILET ACCESSORIES, ETC.

LEGEND

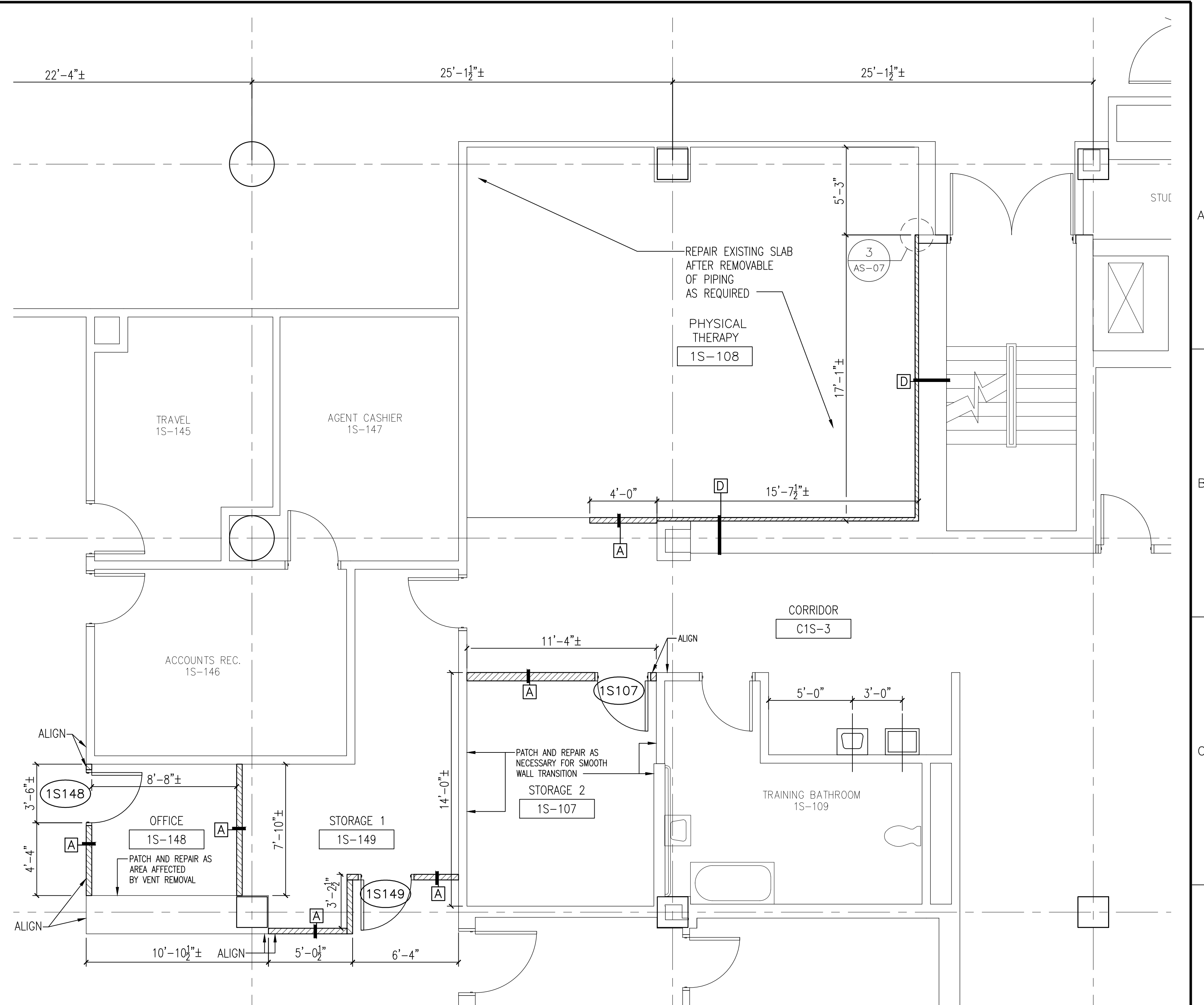
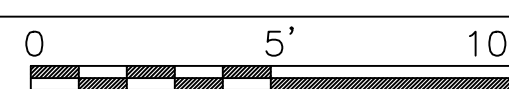
- EXISTING WALL TO REMAIN
- NEW METAL STUD WALL OR FURRING NOTED THUS: [X] SEE PARTITION TYPES & DETAILS, SHEET AS-06.

NEW WORK SPACE SCHEDULE

ROOM NAME	AREA
PHYSICAL THERAPY 1S-108	586 SF
STORAGE-1 1S-149	174 SF
CHECK-IN C1S-4	282 SF
THERAPEUTIC POOL 1S-124	2098 SF
CORRIDOR C1S-8A	101 SF
STORAGE-2 1S-107	151 SF
MEN'S LOCKER 1S-126	282 SF
WOMEN'S LOCKER 1S-127	268 SF
OFFICE 1S-148	68 SF
CORRIDOR C1S-3	263 SF
	4274 SF

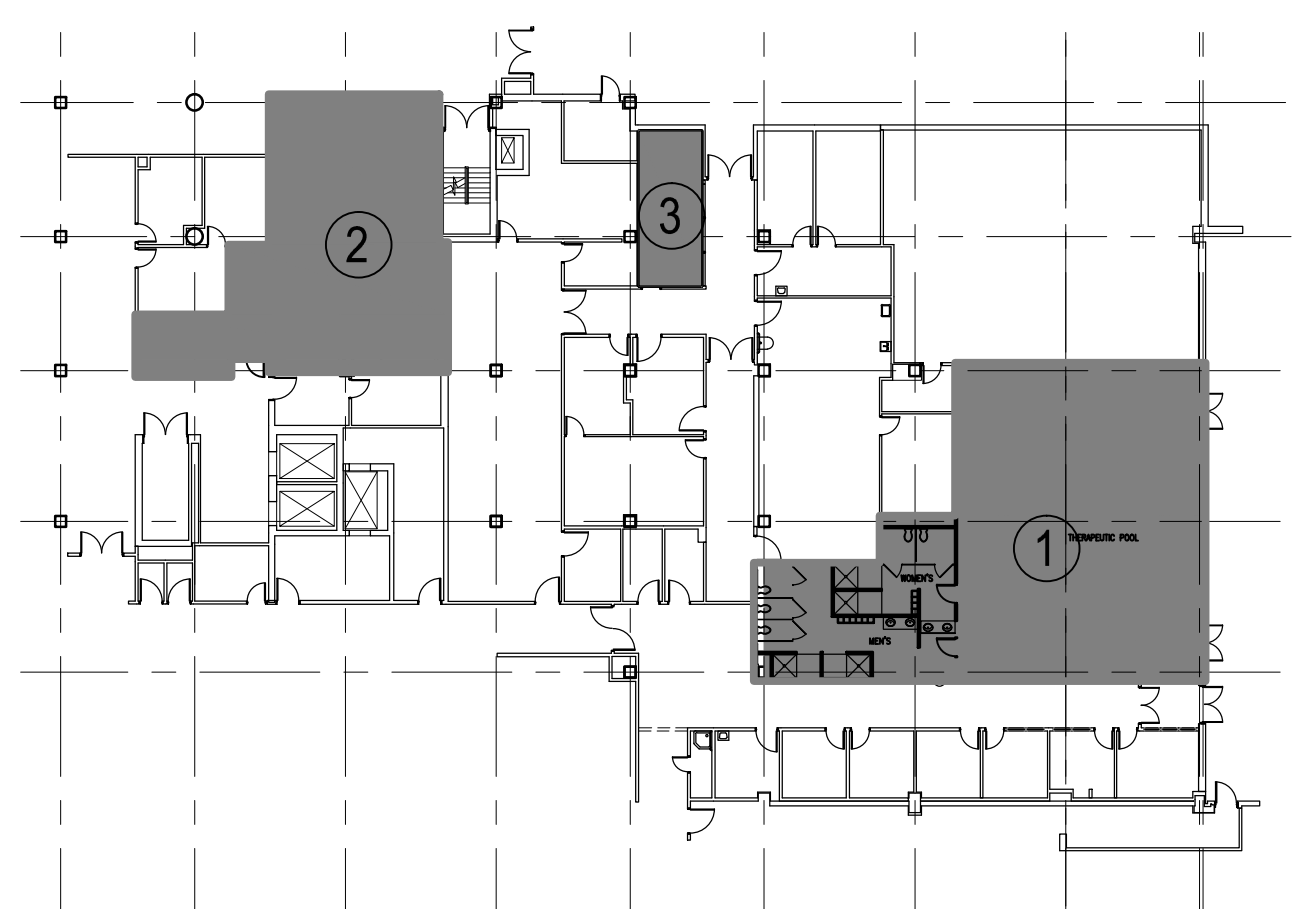
FIRST FLOOR PLAN - AREA 2

SCALE: 1/4"=1'-0"



KEY PLAN - PMR

NOT TO SCALE



Scale: 1/8"=1'-0"

ARCHITECT/ENGINEERS:

**McEntire Design
ARCHITECTS**

1001 WEST WASHINGTON STREET
SUFFOLK, VIRGINIA 23434
phone 757-923-9800 fax 757-923-9830

Drawing Title
FLOOR PLANS - NEW WORK

Approved Project Director

Project Title
**PM&R AREA
RENOVATION**

Location
1201 BROAD ROCK BLVD., RICHMOND, VA 23249

Date
11/4/2013

Checked
CFM

Drawn
KDL

Project Number
652-12-113

Building Number
500

Drawing Number
500-AS-03

Dwg. 6 of 41

Office of
Construction
and Facilities
Management

Department of
Veterans Affairs