

three inches = one foot

one and one half inches = one foot

one inch = one foot

three quarters inch = one foot

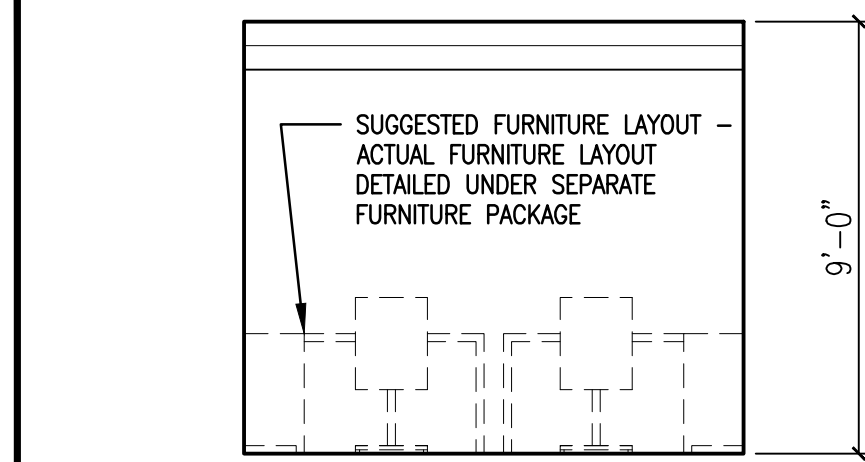
one half inch = one foot

three eighths inch = one foot

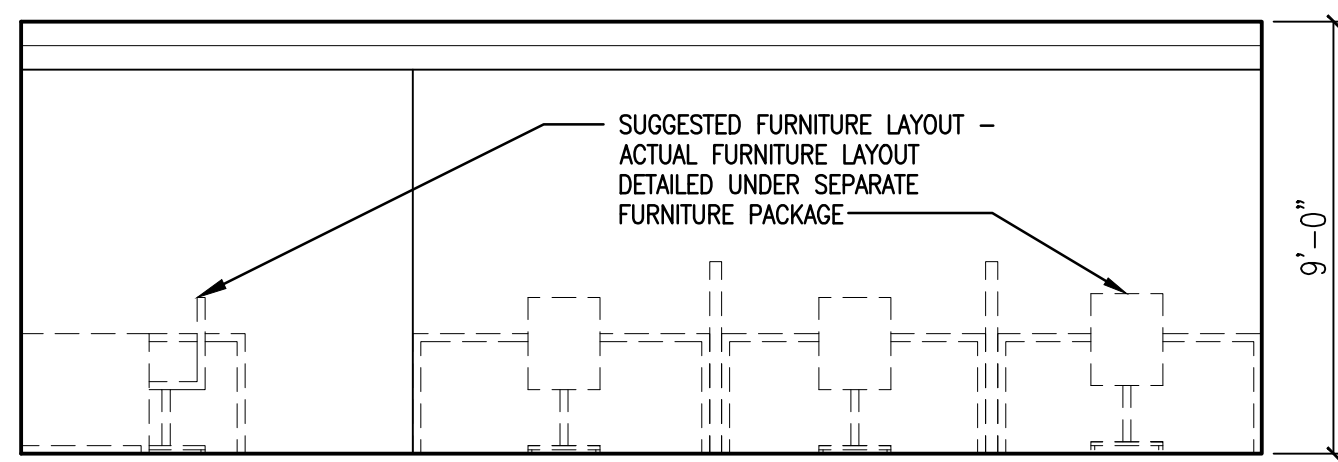
one quarter inch = one foot

one eighth inch = one foot

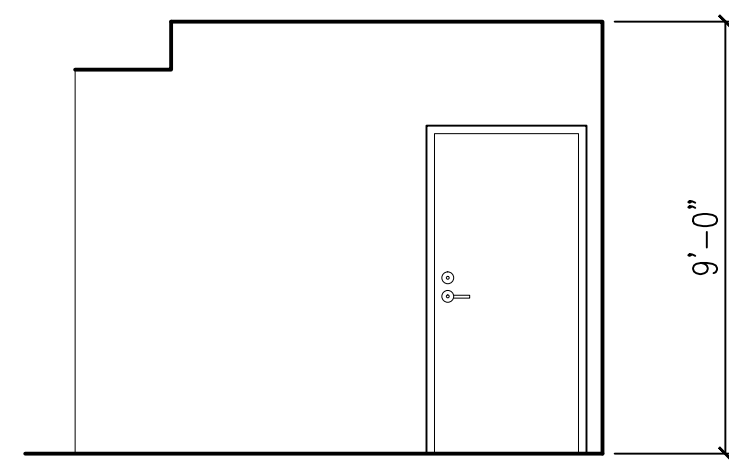
1 2 3 4 5 6 7 8 9



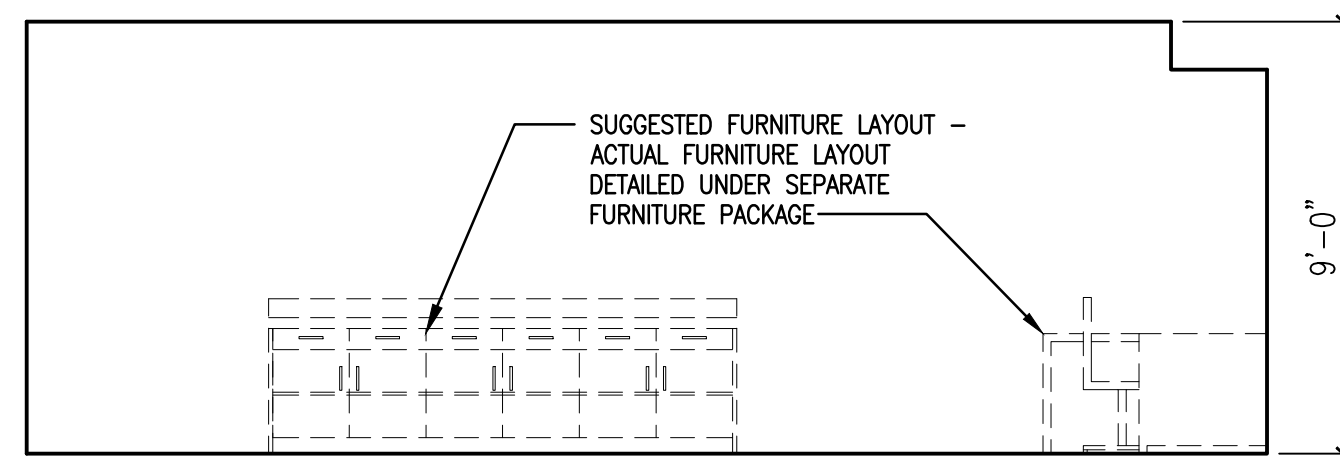
**A PATIENT TREATMENT ELEVATION**  
AS-05 SCALE: 1/4" = 1'-0"



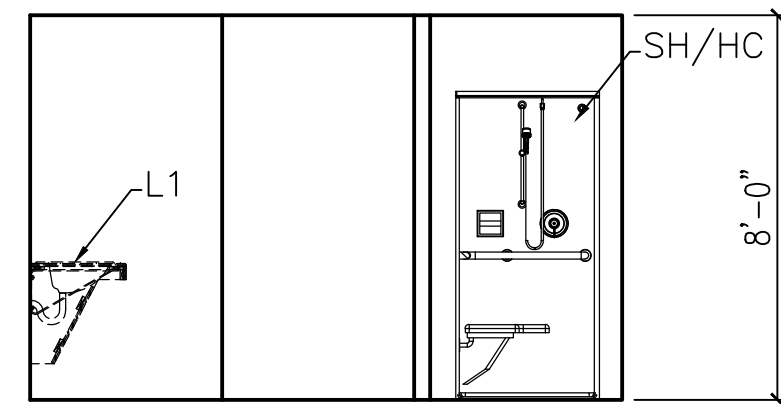
**B PATIENT TREATMENT ELEVATION**  
AS-05 SCALE: 1/4" = 1'-0"



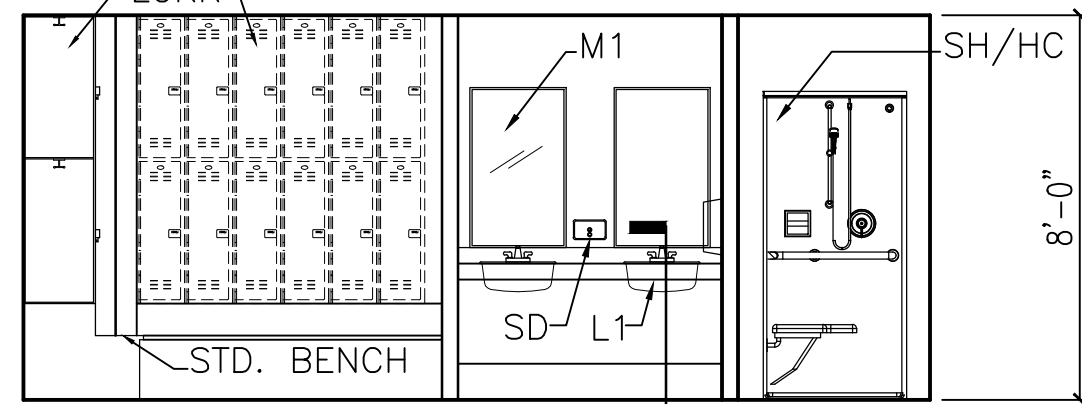
**C PATIENT TREATMENT ELEVATION**  
AS-05 SCALE: 1/4" = 1'-0"



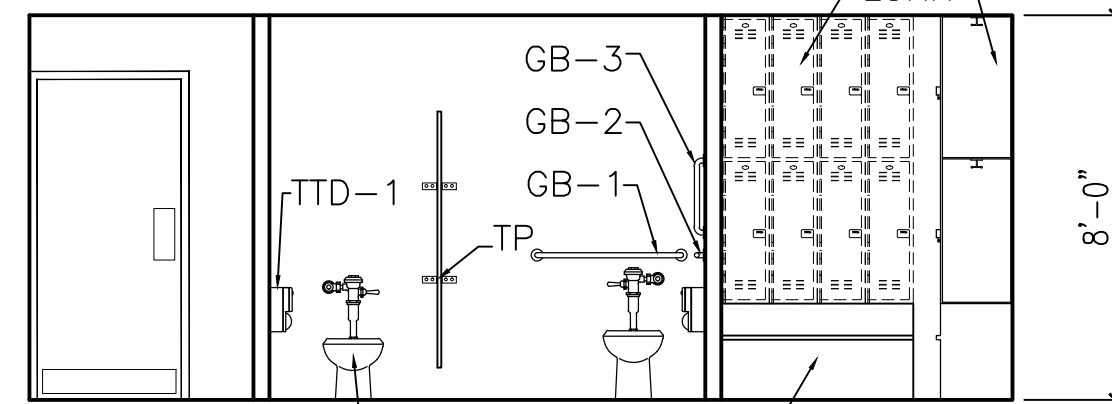
**D PATIENT TREATMENT ELEVATION**  
AS-05 SCALE: 1/4" = 1'-0"



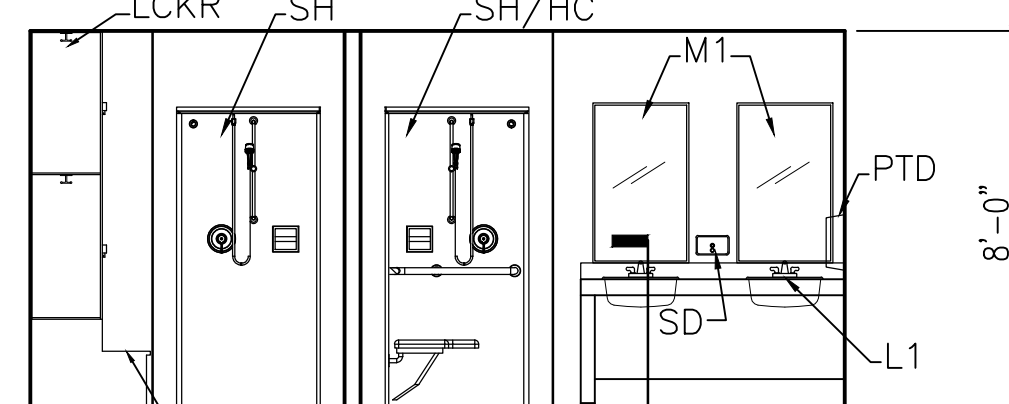
**E MEN'S LOCKERS ELEVATION**  
AS-05 SCALE: 1/4" = 1'-0"



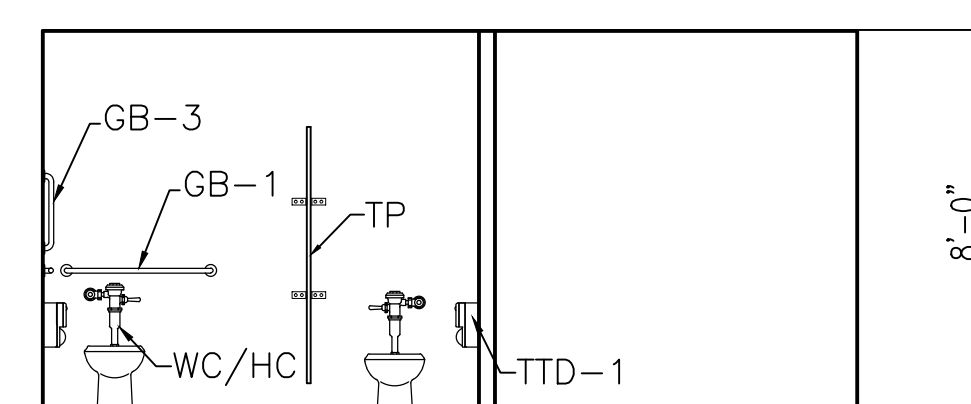
**F MEN'S LOCKERS ELEVATION**  
AS-05 SCALE: 1/4" = 1'-0"



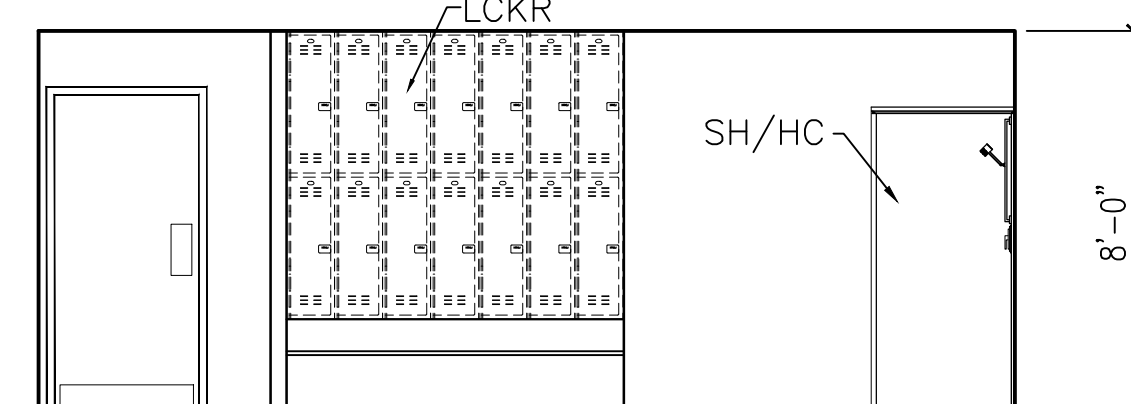
**G MEN'S LOCKERS ELEVATION**  
AS-05 SCALE: 1/4" = 1'-0"



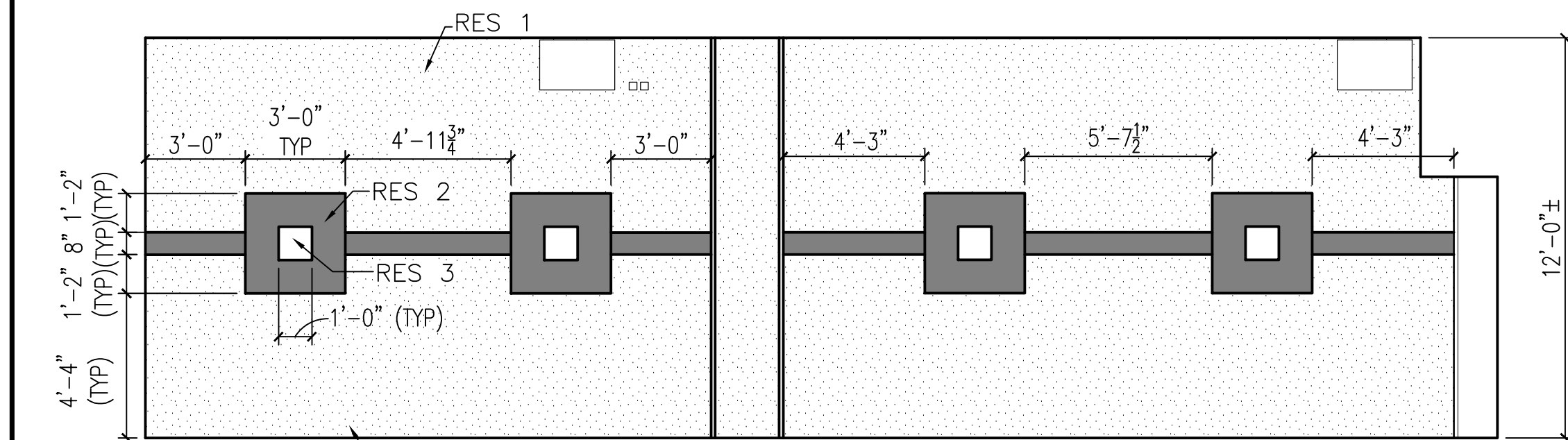
**H WOMEN'S LOCKERS ELEVATION**  
AS-05 SCALE: 1/4" = 1'-0"



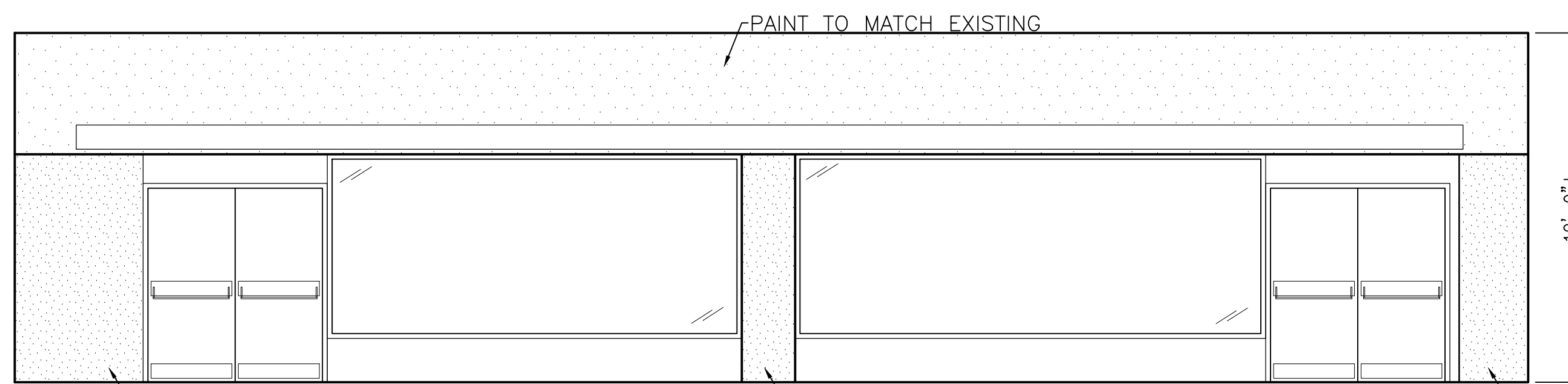
**I WOMEN'S LOCKERS ELEVATION**  
AS-05 SCALE: 1/4" = 1'-0"



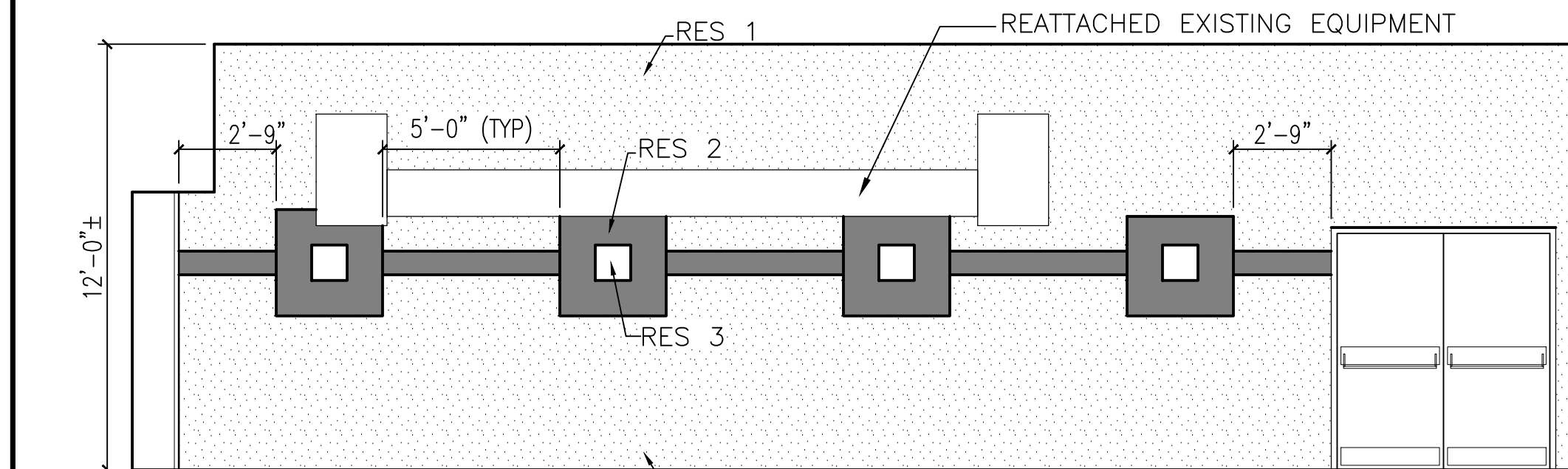
**J WOMEN'S LOCKERS ELEVATION**  
AS-05 SCALE: 1/4" = 1'-0"



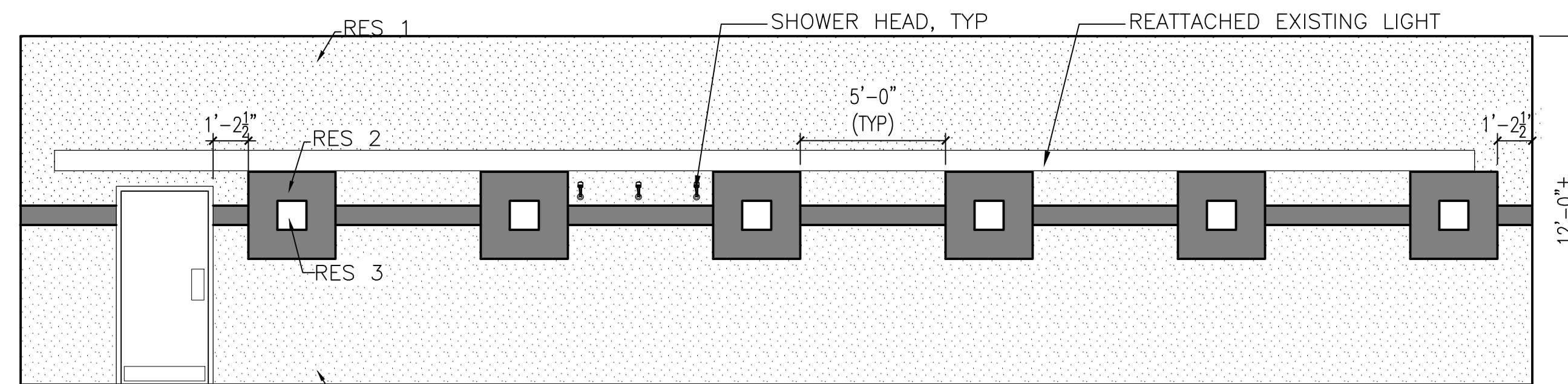
**K THERAPEUTIC POOL ELEVATION**  
AS-05 SCALE: 1/4" = 1'-0"



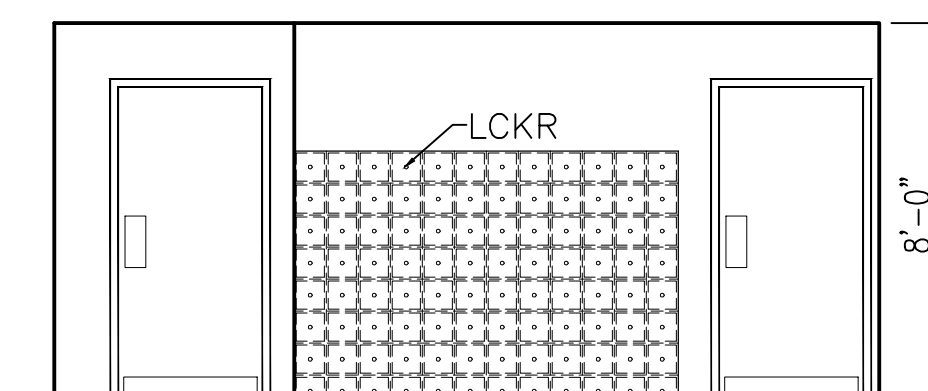
**L THERAPEUTIC POOL ELEVATION**  
AS-05 SCALE: 1/4" = 1'-0"



**M THERAPEUTIC POOL ELEVATION**  
AS-05 SCALE: 1/4" = 1'-0"



**N THERAPEUTIC POOL ELEVATION**  
AS-05 SCALE: 1/4" = 1'-0"

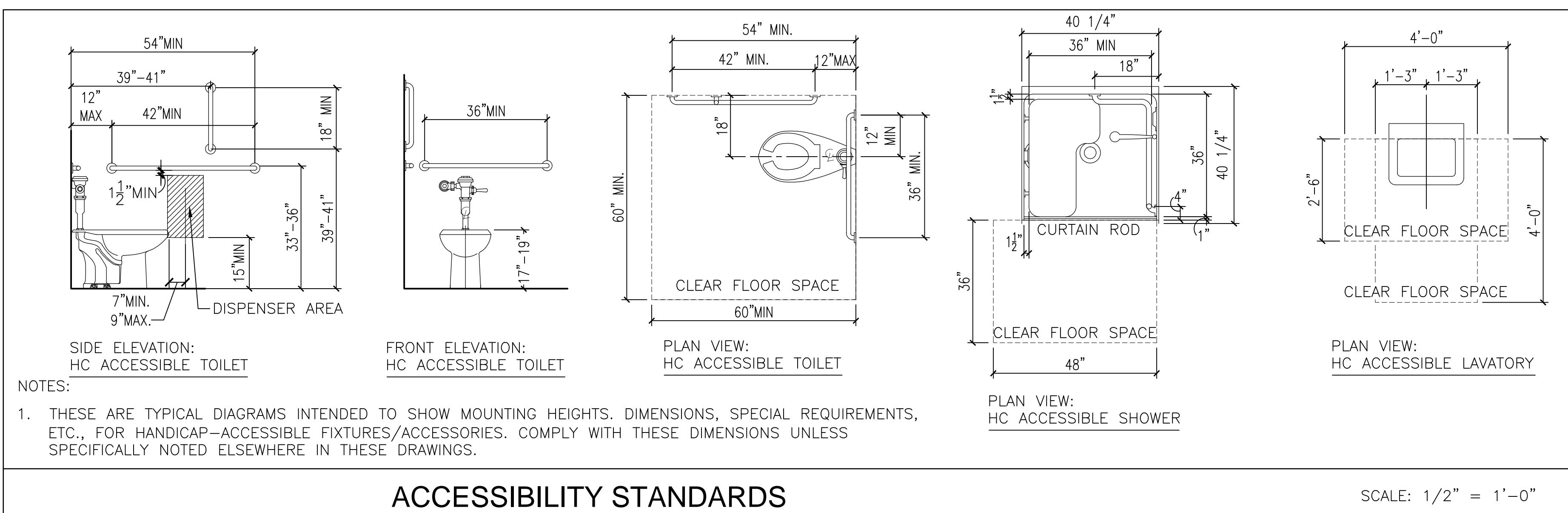


**O CORRIDOR ELEVATION**  
AS-05 SCALE: 1/4" = 1'-0"

## TOILET ACCESSORY LEGEND

GENERAL NOTES:  
1. ABBREVIATIONS ON THE PLANS INDICATE THE APPROXIMATE LOCATION OF THE ITEM. ADHERE TO ALL ADA REQUIREMENTS FOR THE INSTALLATION & MOUNTING HEIGHT OF FIXTURES.  
2. CONTRACTOR SHALL COORDINATE AND PROVIDE WOOD BLOCKING ON WALLS FOR CABINETS, GRAB BARS AND OTHER ACCESSORIES.

GB-1	36" GRAB BAR: 1-1/4" DIA. 1-1/2" OFF FACE OF WALL FINISH. MOUNTED W/ CENTERLINE 36" AFF
GB-2	42" GRAB BAR: 1-1/4" DIA. 1-1/2" OFF FACE OF WALL FINISH. MOUNTED W/ CENTERLINE 36" AFF
GB-3	18" VERTICAL GRAB BAR: 1-1/4" DIA. 1-1/2" OFF FACE OF WALL FINISH. MOUNTED 39-41" AFF
M1	MIRROR, WALL MOUNTED, 24" W x 40" H. MOUNT FRAME BOTTOM @ 38" AFF.
PTD	PAPER TOWEL DISPENSER; BOTTOM OF DISPENSER AT 4'-0" MAX.
L1	LAVATORY
SD	SOAP DISPENSER, SURFACE MOUNTED. MOUNT BOTTOM OF DISPENSER 6" ABOVE SINK
SH/H/C	SHOWER, H/C ACCESSIBLE W/ FOLDING SEAT, 3 FIBERGLASS WALLS & SHOWER BASE WITH 1" LIP
SH	SHOWER, 3 FIBERGLASS WALLS & SHOWER BASE WITH 1" LIP
TTD-1	DOUBLE TOILET TISSUE DISPENSER, SURFACE MOUNTED. MOUNT TOP OF DISPENSER @ 24" AFF
WC/H/C	WATER CLOSET, H/C ACCESSIBLE, FLOOR MOUNTED. RIM @ 18" AFF
TP	TOILET PARTITION
LCKR	LOCKER (INSTALLED UNDER SEPARATE CONTRACT)



## ACCESSIBILITY STANDARDS

SCALE: 1/2" = 1'-0"

						Drawing Title		Project Title		Project Number		Office of Construction and Facilities Management	
						INTERIOR ELEVATIONS		PM&R AREA RENOVATION		652-12-113			
						Approved Project Director		Location		Building Number			
								1201 BROAD ROCK BLVD., RICHMOND, VA 23249		500			
								Date		Drawing Number			
								11/4/2013		500-AS-05			
								Checked		Dwg. 8 of 41			
								CFM					
								Drawn					
								KDL					

<b>CONSULTANTS:</b>		