

1 Level 4 - Phase 1 Floor Pattern/ Wall Finish Plan
A801 1/8" = 1'-0"



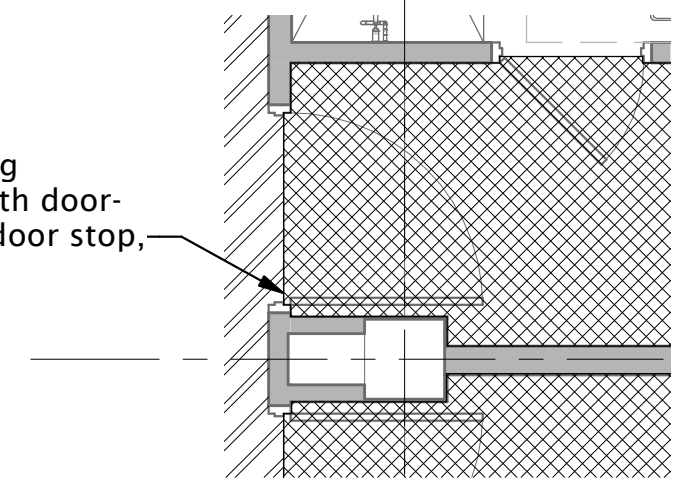
3 Level 4 - Phase 1 Wall Protection Plan
A801 1/8" = 1'-0"

Floor Pattern Legend

	SSV 3 or as called out on Room Finish Schedule
	SSV 4
	SSV 1

NOTE:
Large Floor Pattern Plan indicates general areas of flooring material only. See below for typical doorway transitions between various materials. At double egress doors, transition materials at centerline of door stop.

Align flooring transition with door-leaf side of door stop, UNO.



2 Plan Detail of Typical Flooring Transitions
A801 1/4" = 1'-0"

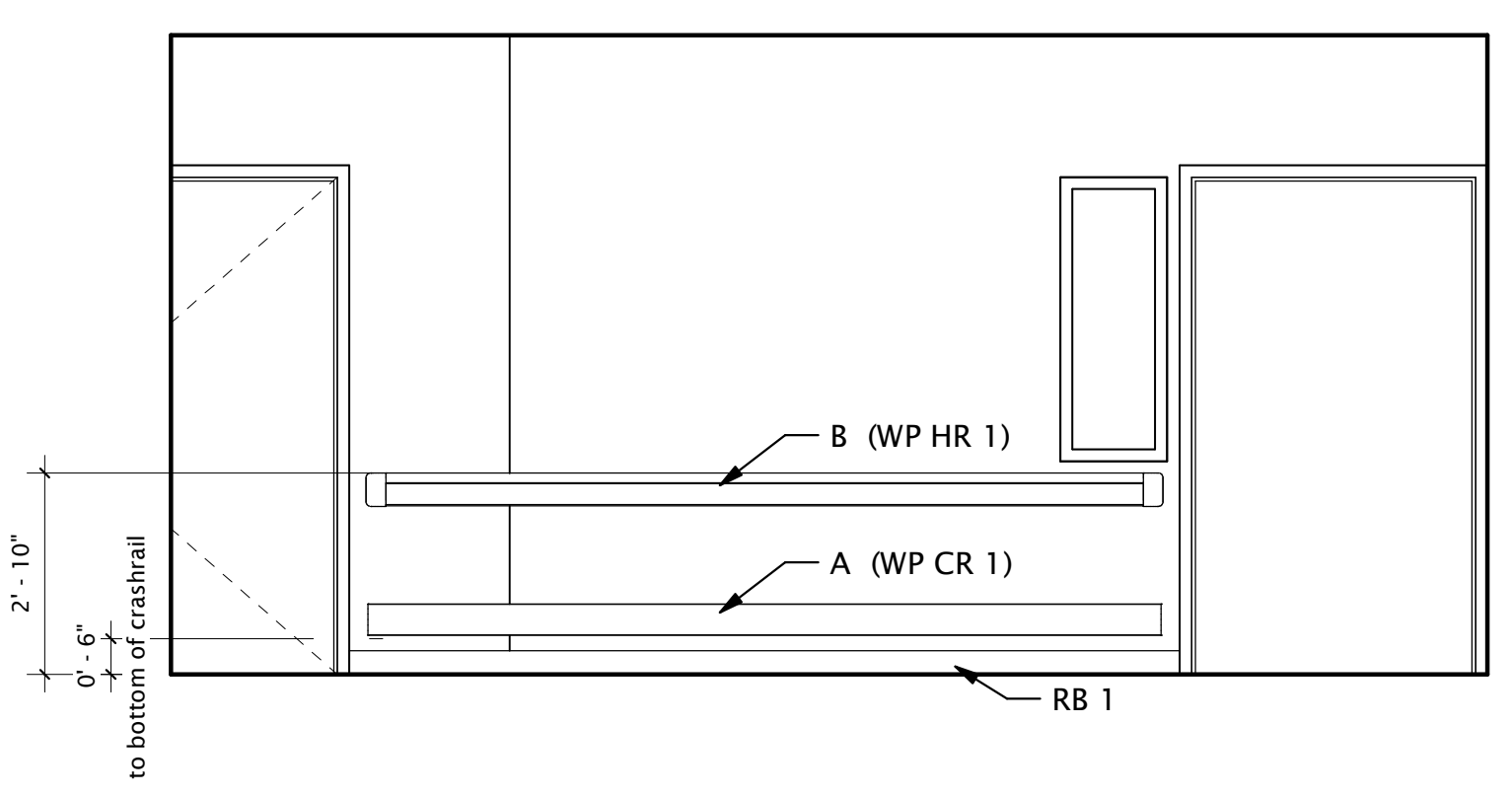
WALL PROTECTION SCHEDULE

Code	Item	Type	Finish Code	Keynote
A	Wall Protection	Crashrail	WP CR 1	10 26 00.B1
A/B	Wall Protection	Handrail and Crashrail	WP CR 1 & WP HR 1	10 26 00.B1
CG1	Wall Protection	Corner Guard	WP CG 1	10 26 00.A1
CG1*	Wall Protection	Corner Guard 2	WP CG 1*	10 26 00.A1

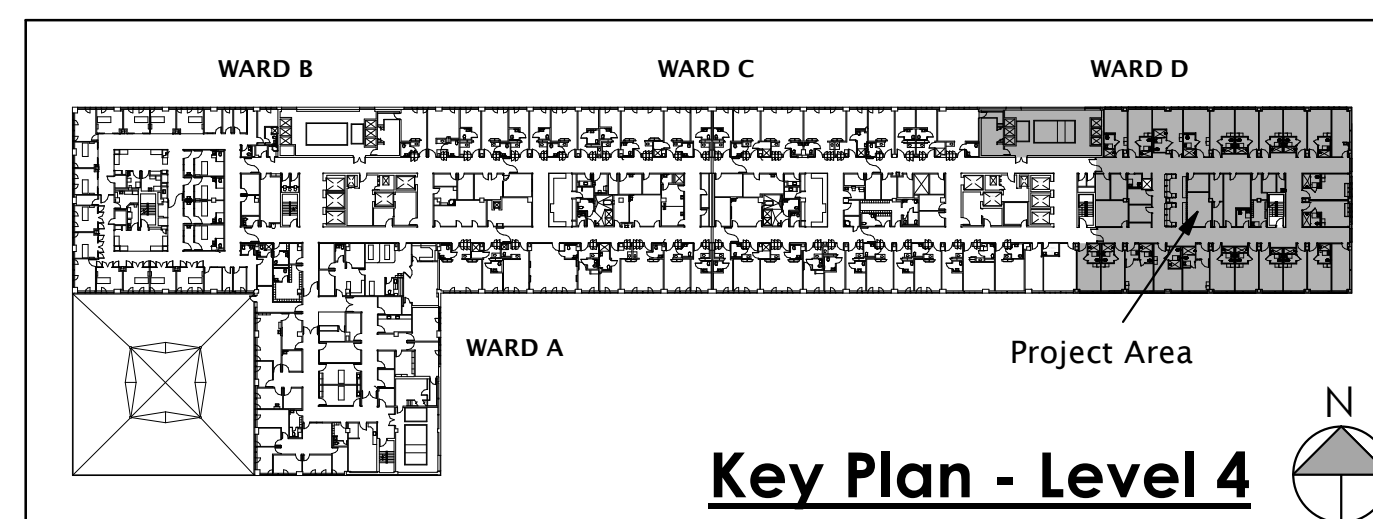
Wall Protection Legend

	CG 1 Corner Guards
	A = Crash Rail A/B = Crash Rail plus Handrail

NOTE:
For door protection, see Door Schedule on sheet A401



4 Corridor Wall Protection
A801 3/8" = 1'-0"



ROUGHTON-NICKELSON-DE LUCA Architects, PA

3608 University Drive, Suite 204
Durham, NC 27707
T 919.490.1266 F 919.490.1396
www.RNDps.com

CERT. NO. 400
DURHAM, N.C.

COMMONWEALTH OF VIRGINIA
Contractor C. De Luca
6/12/2013

REVISIONS

REV.	DESCRIPTION	DATE
1	Addendum # 1	11/14/13

© 2013 Roughton Nickelson De Luca Architects, PA. These drawings and specifications are instruments of service whose ownership and copyright are transferred to the US Department of Veterans Affairs (client) upon project completion, under the following conditions: Their use is restricted to the original site for which they were prepared and publication thereof is expressly limited to such use. The documents are project-specific and are not intended for re-use on other projects. Any re-use by the client without the involvement of Roughton Nickelson De Luca Architects (RND) will be at the client's sole risk. The client agrees to defend, indemnify, and hold RND harmless from any claims brought against RND arising out of the re-use. RND reserves the right to re-use standard details of the contract documents.

RECOMMEND APPROVAL

Requestor:	Date:
Chief of Service:	Date:
Infection Control:	Date:
Chief of Staff:	Date:
Assoc. Med. Dir.:	Date:

Drawing Title: **Wall Protection Plan/ Finish Plan**

APPROVED BY: _____

MEDICAL CENTER DIRECTOR

Project Title: **Improve Patient Privacy 4D/C Richmond VA**

Building No.:	Designed by:	Drawn by:	Checked by:
Main	GDL	VS/RS	GDL

Location: **1201 Broad Rock Blvd Richmond, VA 23224**

Date: 06/12/2013

Project No.: **Owner Proj. # 652-11-112**

Project Title: **RND 1232**

DRAWING NO. **A801**

Sheet of _____

Department of VETERANS AFFAIRS