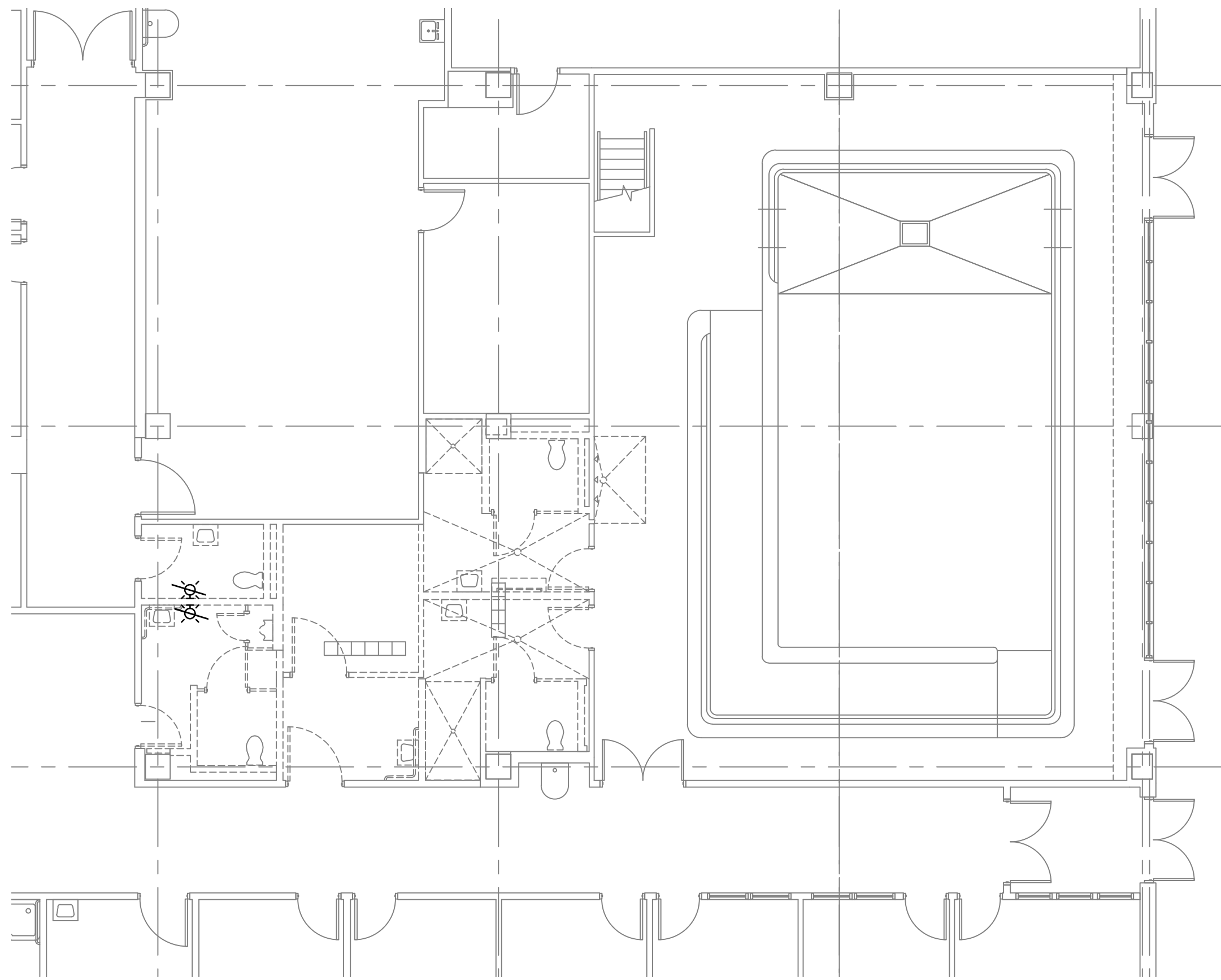
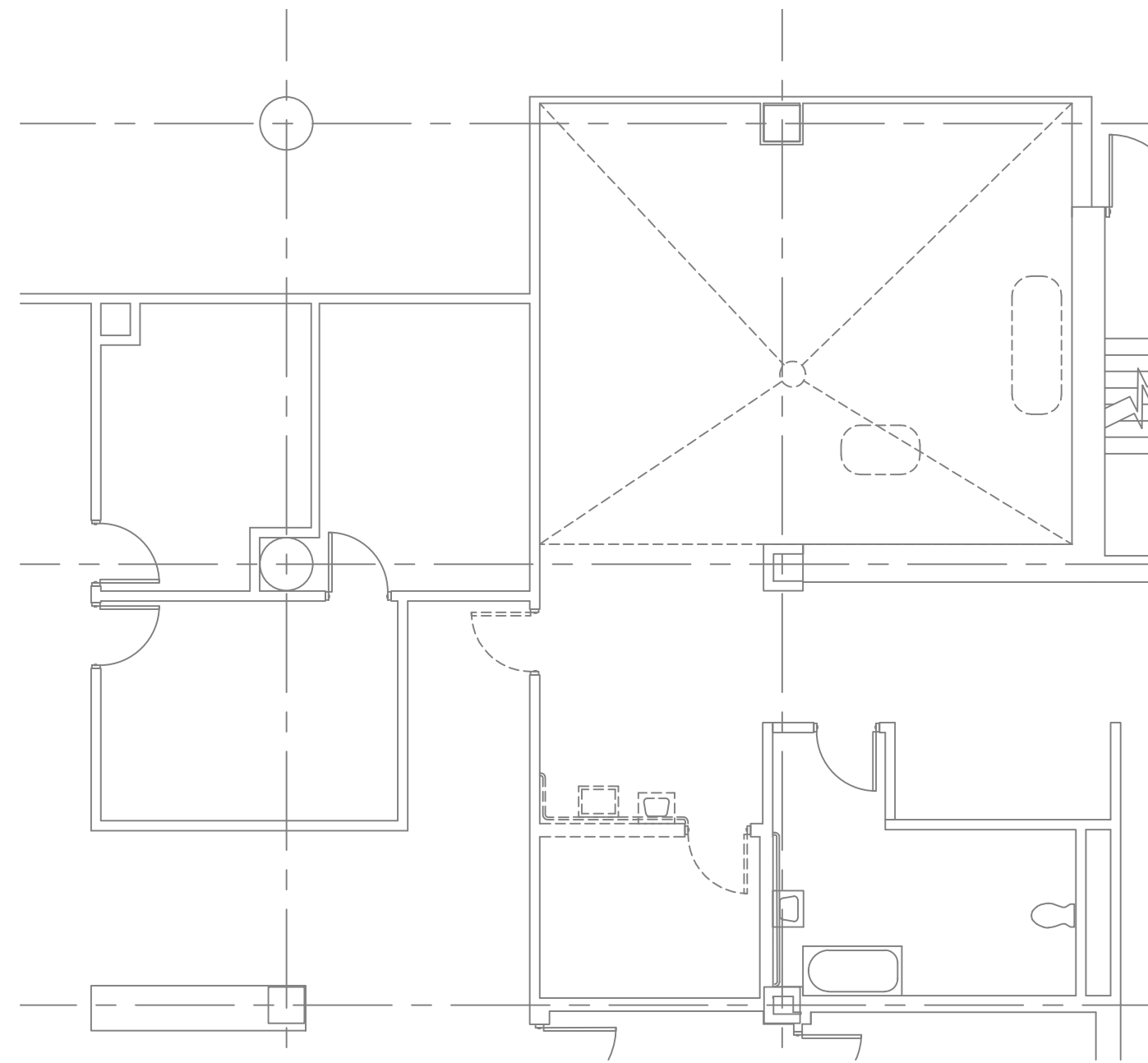


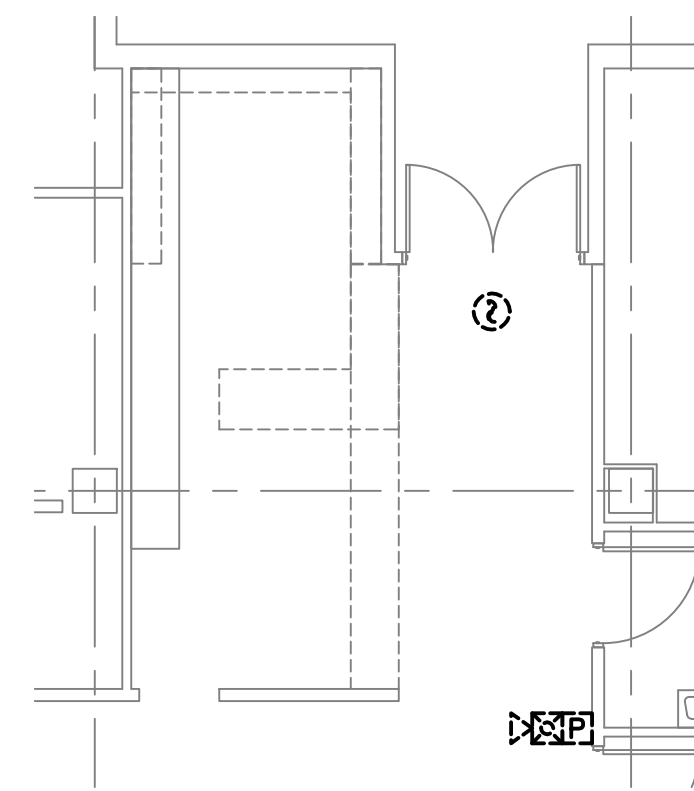
three eighths inch = one foot
one eighth inch = one foot
one quarter inch = one foot
one half inch = one foot
three eighths inch = one foot
one half inch = one foot
three quarters inch = one foot
one inch = one foot
one and one half inches = one foot
two inches = one foot
three inches = one foot



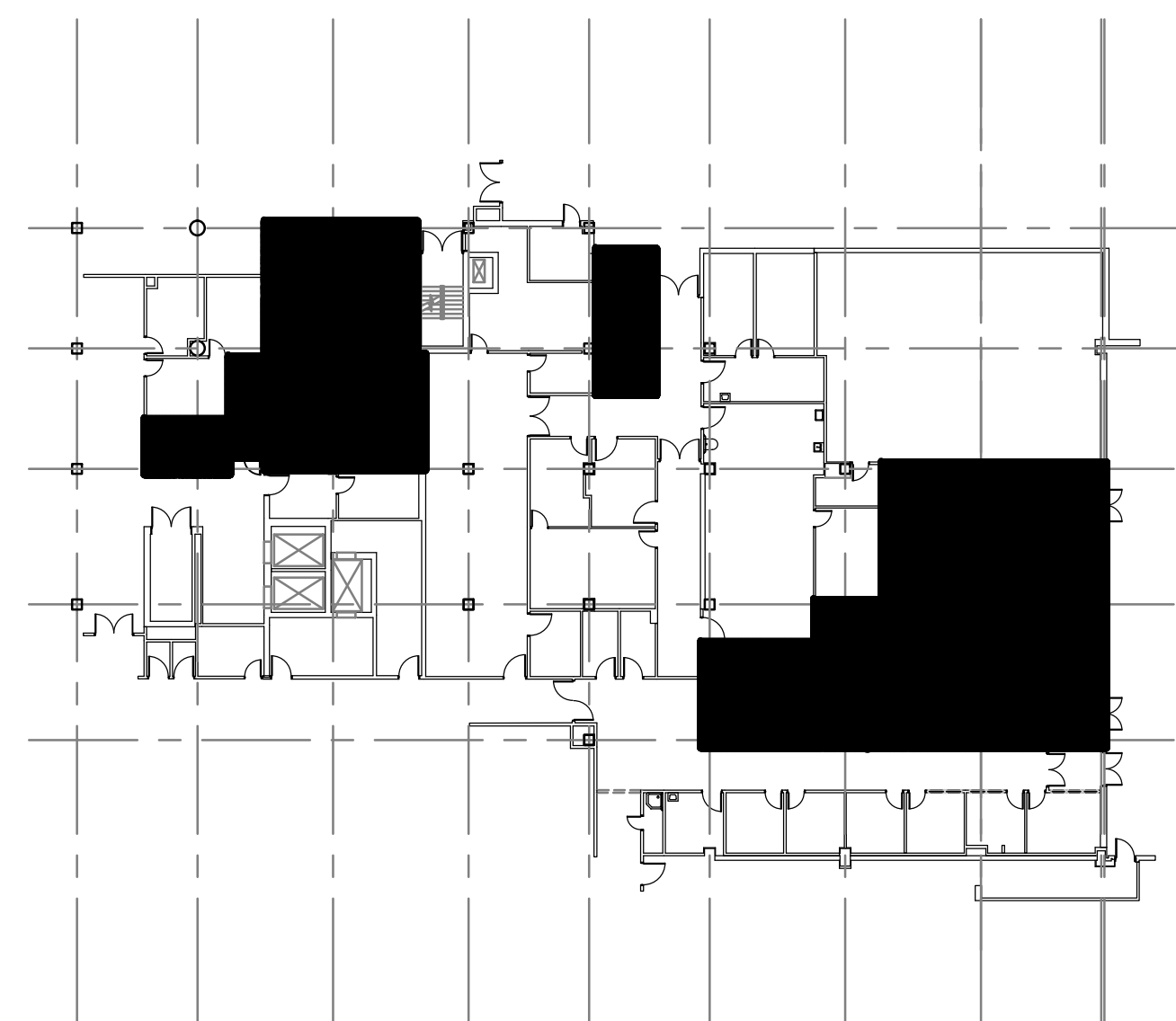
FIRST FLOOR PLAN - AREA 1 - FIRE ALARM DEMOLITION PLAN
SCALE: 1/8"=1'-0"
0 5' 10' 15' 20'



FIRST FLOOR PLAN - AREA 2 - FIRE ALARM DEMOLITION PLAN
SCALE: 1/8"=1'-0"
0 5' 10' 15' 20'



FIRST FLOOR PLAN - AREA 3 - FIRE ALARM DEMOLITION PLAN
SCALE: 1/8"=1'-0"
0 5' 10' 15' 20'



KEY PLAN - PMR
NOT TO SCALE

LEGEND

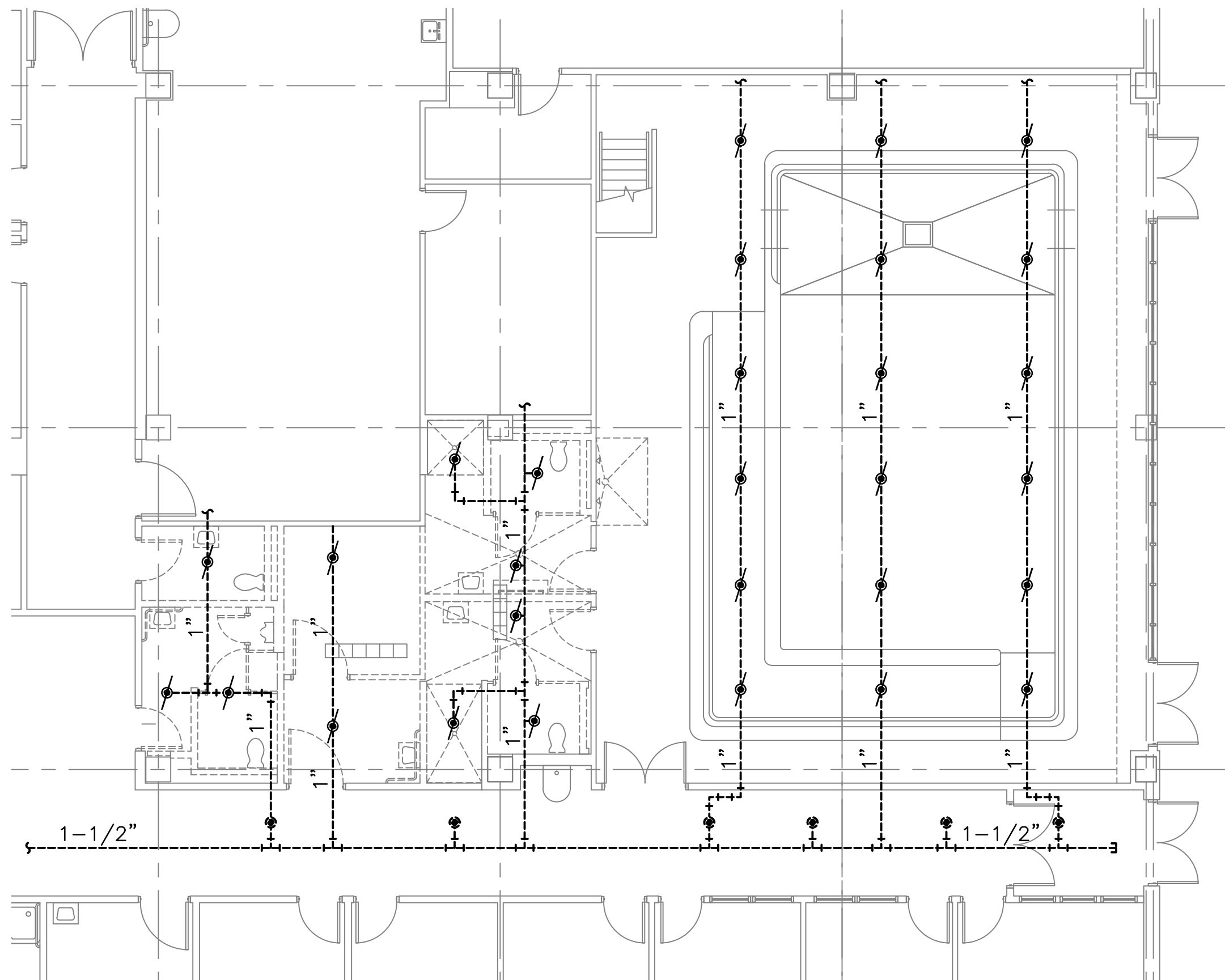
- WALL MOUNTED SPEAKER/STROBE (EXISTING TO REMAIN)
- MANUAL PULL STATION (EXISTING TO REMAIN)
- SMOKE DETECTOR (EXISTING TO REMAIN)
- WALL MOUNTED STROBE (TO BE DEMOLISHED)

GENERAL NOTES

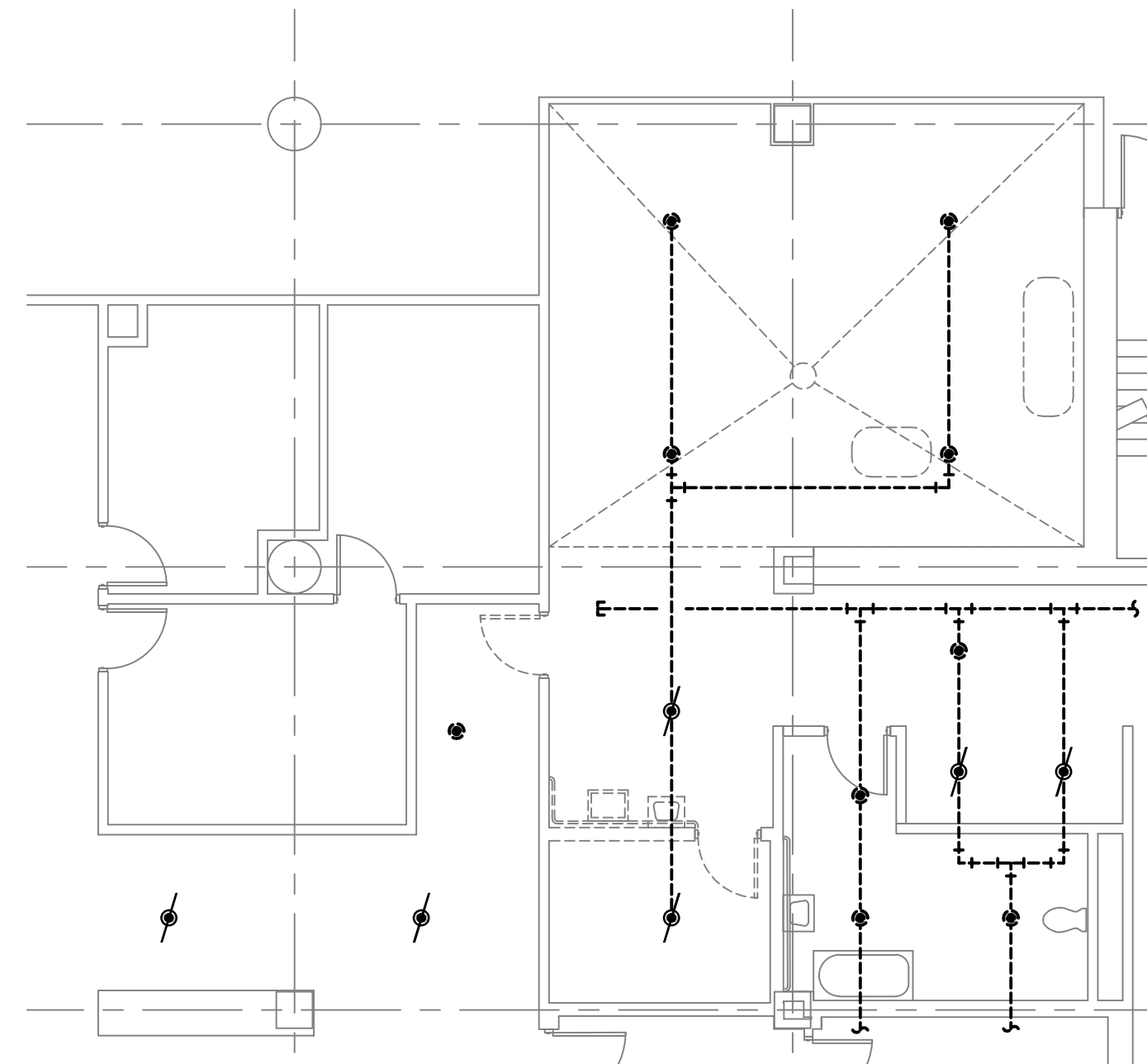
- SEE SHEET FA-001 FOR FIRE ALARM NOTES.
- DEVICES IN THIS AREA CONNECTED TO FACP 2422/ZONE 6.

Revisions:		Date:		CONSULTANTS:				ARCHITECT/ENGINEERS:		Drawing Title		Project Title		Project Number		Office of Construction and Facilities Management 			
										FIRST FLOOR PLAN - FIRE ALARM DEMOLITION PLAN		PM&R AREA RENOVATION		652-12-113					
										Approved Project Director		Location 1201 BROAD ROCK BLVD., RICHMOND, VA 23249		Building Number 500					
												Date NOV 05, 2013		Checked AJW		Drawn DEG		Drawing Number 500-FA-1	
																		Dwg. 36 of 41	

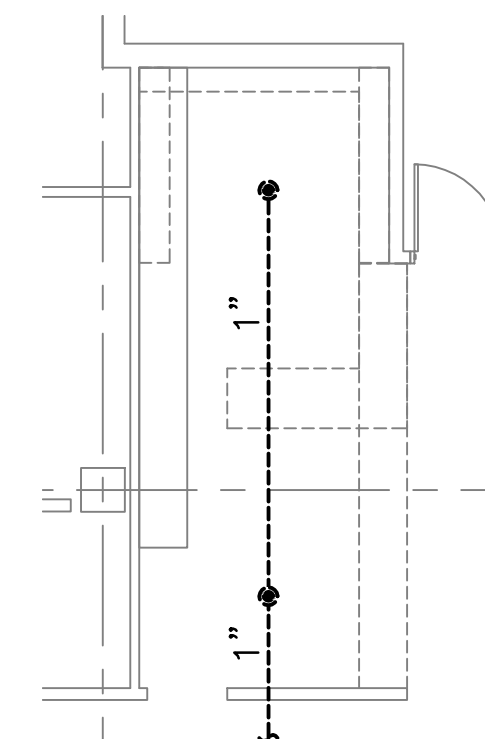
three inches = one foot
one and one half inches = one foot
one inch = one foot
three quarters inch = one foot
one half inch = one foot
three eighths inch = one foot
one quarter inch = one foot
one eighth inch = one foot



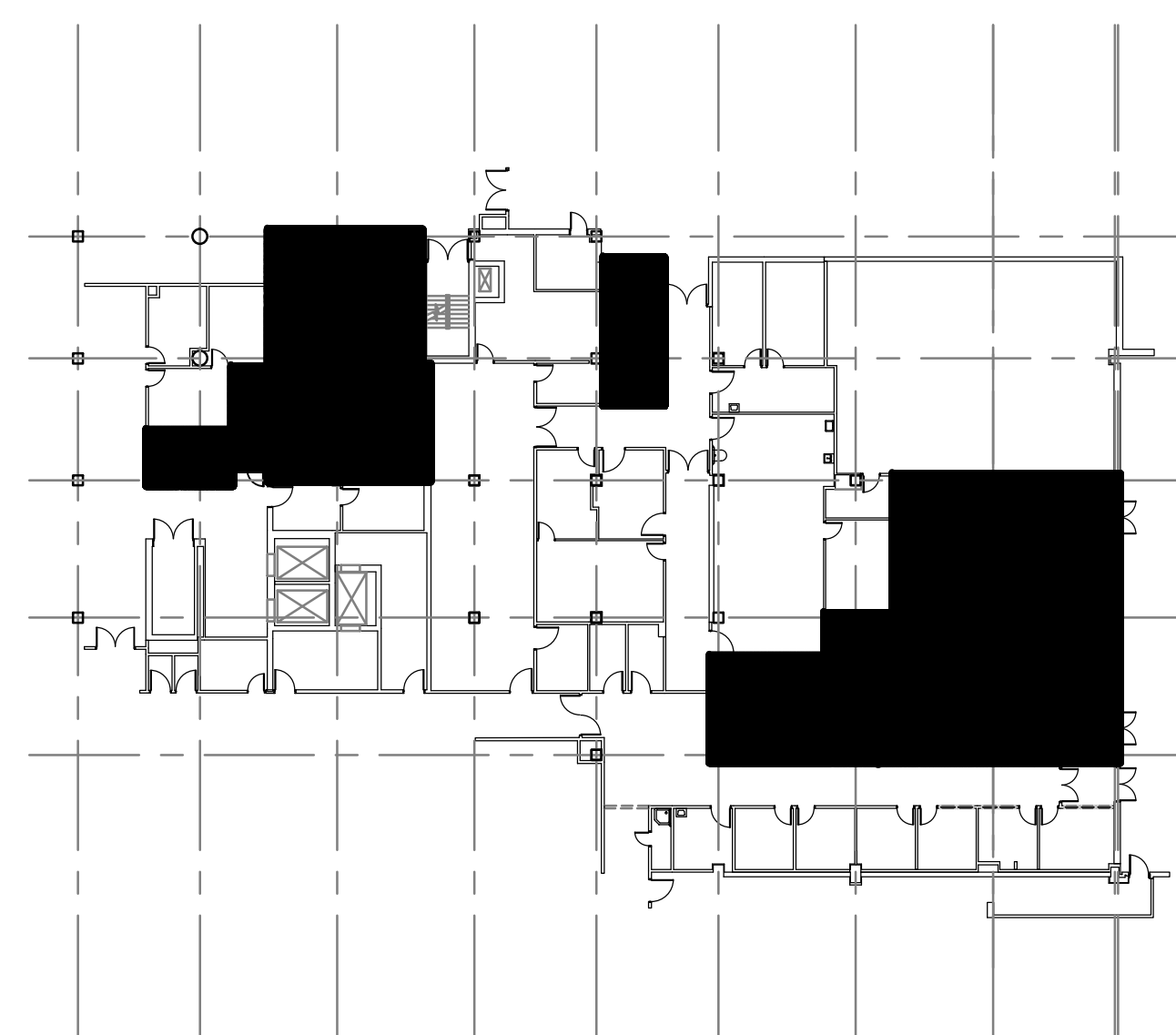
FIRST FLOOR PLAN - AREA 1 - FIRE SUPPRESSION DEMOLITION PLAN
SCALE: 1/8"=1'-0"
0 5' 10' 15' 20'



FIRST FLOOR PLAN - AREA 2 - FIRE SUPPRESSION DEMOLITION PLAN
SCALE: 1/8"=1'-0"
0 5' 10' 15' 20'



FIRST FLOOR PLAN - AREA 3 - FIRE SUPPRESSION DEMOLITION PLAN
SCALE: 1/8"=1'-0"
0 5' 10' 15' 20'



KEY PLAN - PMR
NOT TO SCALE

LEGEND

- RECESSED PENDANT SPRINKLER (EXISTING TO REMAIN)
- ⚡ RECESSED PENDANT SPRINKLER (TO BE DEMOLISHED)
- SPRINKLER PIPE (EXISTING)

GENERAL NOTES

- SEE SHEET FX-001 FOR FIRE SPRINKLER NOTES.

Revisions:	Date	CONSULTANTS:	ARCHITECT/ENGINEERS:	Drawing Title	Project Title	Project Number	Office of Construction and Facilities Management
			McEntire Design ARCHITECTS	FIRST FLOOR PLAN - FIRE SUPPRESSION DEMOLITION PLAN	PM&R AREA RENOVATION	652-12-113	
			1001 WEST WASHINGTON STREET SUFFOLK VIRGINIA 23434 phone 757-923-9800 fax 757-923-9830	Approved Project Director	Location	Building Number	
					1201 BROAD ROCK BLVD., RICHMOND, VA 23249	500	
					Date	Checked	Drawn
					NOV 05, 2013	AJW	DEG
						Dwg. 37 of 41	

three inches = one foot
one and one half inches = one foot
one inch = one foot
three quarters inch = one foot
one half inch = one foot
three eighths inch = one foot
one quarter inch = one foot
one eighth inch = one foot

FIRE ALARM GENERAL NOTES

GENERAL SCOPE – MODIFY EXISTING FIRE ALARM SYSTEM AS INDICATED DUE TO FLOOR PLAN RECONFIGURATION IN WORK AREAS. COORDINATE FIRE ALARM INSTALLATION AND DEMOLITION WITH PHASING PLAN PER SHEET 110B.G-003.

1. APPLICABLE CODES:
- VA DEPARTMENT OF VETERANS AFFAIRS (VA) FIRE PROTECTION DESIGN MANUAL, SIXTH EDITION, ISSUED SEPTEMBER 2011.
- NFPA 72 NATIONAL FIRE ALARM CODE, 2010 EDITION.
- NFPA 70 NATIONAL ELECTRIC CODE, 2011 EDITION.
- NFPA 101 LIFE SAFETY CODE, 2009 EDITION.
2. REFER TO SPECIFICATION 283100 FOR ADDITIONAL INFORMATION. IF A CONFLICT OCCURS, THE MORE STRINGENT REQUIREMENT SHALL APPLY.
3. NOTIFICATION: PROVIDE PUBLIC MODE GENERAL EVACUATION OF THE ENTIRE BUILDING IN ACCORDANCE WITH NFPA 72 AND VA.
- AUDIBLE SIGNAL SHALL CONFORM TO ANSI S3.41 AUDIBLE EMERGENCY EVACUATION SIGNAL (I.E., TEMPORAL THREE PATTERN) [VA 7.3.F.1].
- AUDIBLE NOTIFICATION SHALL BE ACCOMPLISHED USING A DIGITAL VOICE SPEAKER SYSTEM [VA 7.3.B].
- SOUND PRESSURE LEVEL FROM AUDIBLE ALARM APPLIANCES SHALL NOT EXCEED 110 DBA IN ANY OCCUPIED AREA [NFPA 72 7.4.1.2].
4. ALL NEW CONDUIT AND BACK BOXES SHALL BE CONCEALED IN FINISHED SPACES UNLESS OTHERWISE NOTED.
5. ALL CIRCUIT WIRING SHALL BE CLASS B.
6. ALL SYSTEM POWER AND GROUND CIRCUITS SHALL BE TYPE "THHN" SOLID COPPER SIZED ACCORDING TO THE MANUFACTURER'S RECOMMENDATIONS AND THE APPLICABLE CODES AND BE INSTALLED IN EMT TYPE CONDUIT.
7. ALL WIRING, CABLES, BOXES, TROUGHS AND OTHER RELATED EQUIPMENT SHALL BE INSTALLED IN STRICT COMPLIANCE WITH THE NATIONAL ELECTRICAL CODE (NEC).
8. SECONDARY POWER SUPPLY SHALL BE VIA DEDICATED FIRE ALARM BATTERIES CAPABLE OF OPERATING THE SYSTEM ON STANDBY FOR 24 HOURS FOLLOWED BY 5 MINUTES WITH THE SYSTEM AT FULL CAPACITY [NFPA 72 4.4.1.5.3.1]. CHARGING AND METERING SHALL BE PROVIDED IN ACCORDANCE WITH NFPA 72.
9. PERFORM TESTING IN ACCORDANCE WITH THE PROJECT SPECIFICATIONS AND NFPA 72.
10. INCLUDE THE SYSTEM WIRING, RACEWAYS, PULL BOXES, TERMINAL CABINETS, OUTLET AND MOUNTING BOXES, CONTROL EQUIPMENT, ALARM, AND SUPERVISORY SIGNAL INITIATING DEVICES, ALARM NOTIFICATION APPLIANCES, AND OTHER ACCESSORIES AND MISCELLANEOUS ITEMS REQUIRED FOR A COMPLETE OPERATING SYSTEM EVEN THOUGH EACH ITEM IS NOT SPECIFICALLY MENTIONED OR DESCRIBED. PROVIDE SYSTEM(S) COMPLETE AND READY FOR OPERATION.
11. PROVIDE EQUIPMENT MATERIALS, INSTALLATION, WORKMANSHIP, INSPECTION, AND TESTING IN STRICT ACCORDANCE WITH THE REQUIRED AND ADVISORY PROVISIONS OF NFPA 72, ISO 7240-16, IEC 60268-16, EXCEPT AS MODIFIED HEREIN. THE SYSTEM LAYOUT ON THE DRAWINGS SHOWS THE INTENT OF COVERAGE AND DEVICE/APPLIANCES ARE SHOWN IN SUGGESTED LOCATIONS. SUBMIT SHOP DRAWINGS SHOWING DEVICE LOCATIONS, TERMINAL CABINET LOCATIONS, JUNCTION BOXES, OTHER RELATED EQUIPMENT, CONDUIT ROUTING, WIRE COUNTS, CIRCUIT IDENTIFICATION IN EACH CONDUIT, AND CIRCUIT LAYOUTS FOR ALL FLOORS. DRAWINGS SHALL COMPLY WITH THE REQUIREMENTS OF NFPA 170. FINAL QUALITY, SYSTEM LAYOUT, AND COORDINATION ARE THE RESPONSABILITY OF THE CONTRACTOR.

FIRE ALARM DEMOLITION NOTES

1. THE FIRE ALARM SYSTEM SHALL REMAIN ACTIVE THROUGHOUT THE PROJECT. EXISTING FIRE ALARM CIRCUITS AND DEVICES SHALL REMAIN UNTIL NEW FIRE ALARM SYSTEM IS ACCEPTED BY THE CONTRACTING OFFICER.
2. THE CONTRACTOR SHALL BE RESPONSIBLE TO PROVIDE ALL PARTS, MATERIALS AND PROGRAMMING TO MAINTAIN SYSTEM OPERABILITY.
3. NEW DEVICES INSTALLED BUT NOT IN SERVICE SHALL BE TAGGED "NOT IN SERVICE." UPON ACCEPTANCE OF NEW FIRE FIRE ALARM SYSTEM TAGS SHALL BE REMOVED.
4. THE EXISTING SYSTEM DEVICES SHALL BE TAKEN OUT OF SERVICE AND TAGGED "NOT IN SERVICE."
5. EXISTING DEVICES, WIRE AND ANY UNUSED CONDUIT SHALL BE DEMOLISHED. REPAIR ANY SURFACES DAMAGED BY FIRE ALARM DEMOLITION.

FIRE ALARM INPUT		OPERATION							
		ACTIVATE FA EVACUATION THROUGHOUT BUILDING	ALARM CONDITION AT FACU	SUPERVISORY CONDITION AT FACU	TROUBLE CONDITION AT FACU	TRANSMIT SIGNAL TO REMOTE STATION	SHUT DOWN ASSOCIATED AMU	CLOSE ASSOCIATED HVAC DAMPERS	RELEASE ACCESS CONTROL POINTS (E.G., MAG LOCKS)
MANUAL PULL STATION		●	●			●			●
SMOKE DETECTOR		●	●			●			●
DUCT DETECTOR				●			●	●	
AUTOMATIC SPRINKLER SYSTEM FLOW SWITCH		●	●			●			●
AUTOMATIC SPRINKLER SYSTEM TAMPER SWITCH				●		●			
FACU CIRCUIT FAULT (OPEN, GROUND, SHORT)					●	●			
OTHER TROUBLE CONDITION					●	●			
PRIMARY AC POWER LOSS					●	●			

FIRE ALARM INPUT-OUTPUT MATRIX

NO SCALE

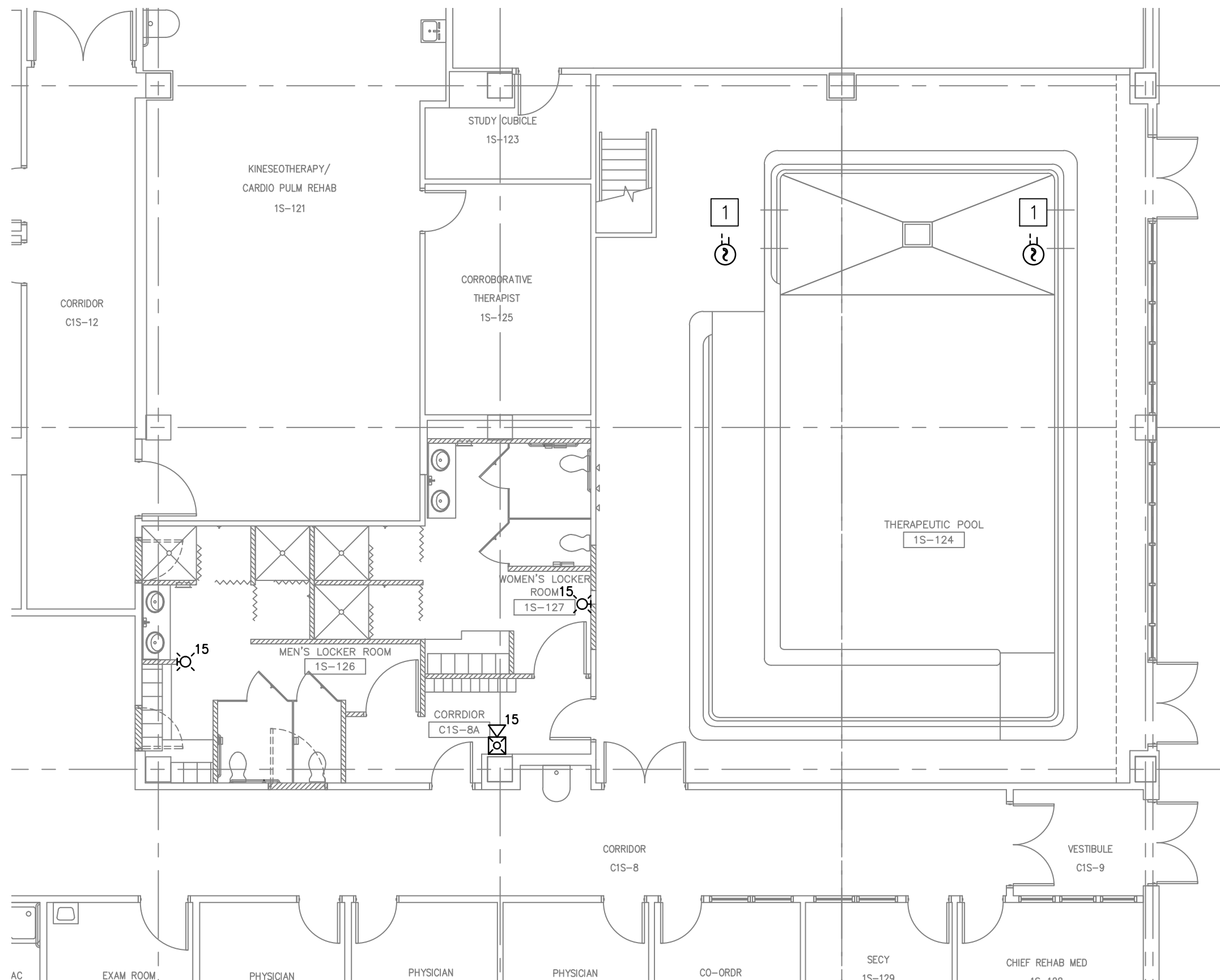
FA-001

1

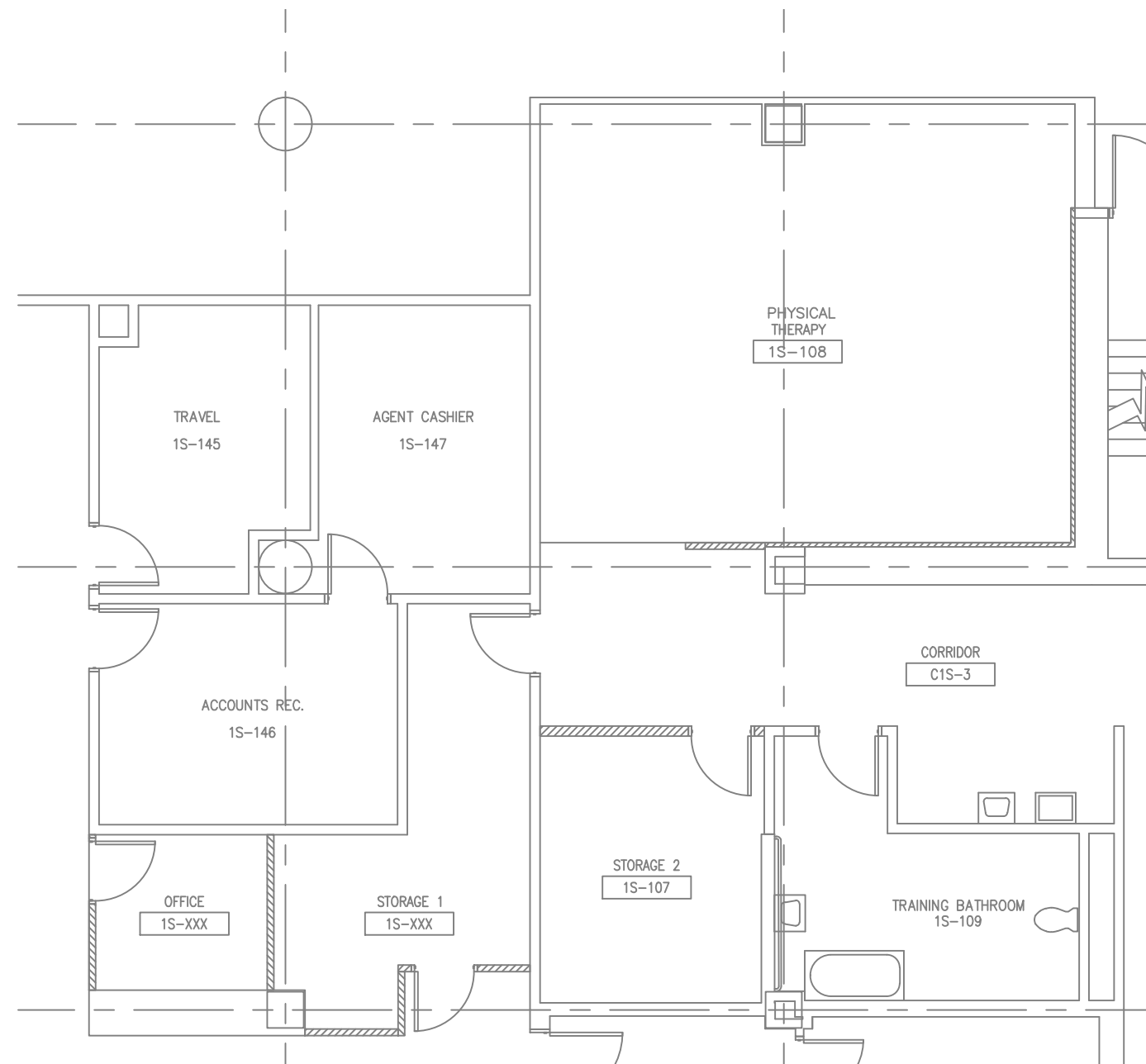
Scale: 1/8"= 1'-0"

		CONSULTANTS:		ARCHITECT/ENGINEERS:	Drawing Title FIRE ALARM GENERAL NOTES	Project Title PM&R AREA RENOVATION	Project Number 652-12-113	Office of Construction and Facilities Management Department of Veterans Affairs	
					Approved Project Director	Location 1201 BROAD ROCK BLVD., RICHMOND, VA 23249	Building Number 500		
						Date NOV 05, 2013	Checked AJW		Drawing Number 500-FA-3
							Drawn DEG		Dwg. 38 of 41
Revisions:	Date								

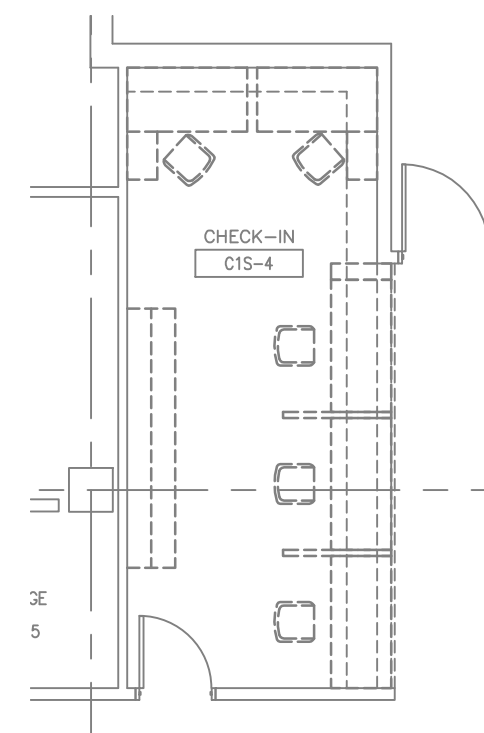
three inches = one foot
one and one half inches = one foot
one inch = one foot
three quarters inch = one foot
one half inch = one foot
three eighths inch = one foot
one quarter inch = one foot
one eighth inch = one foot



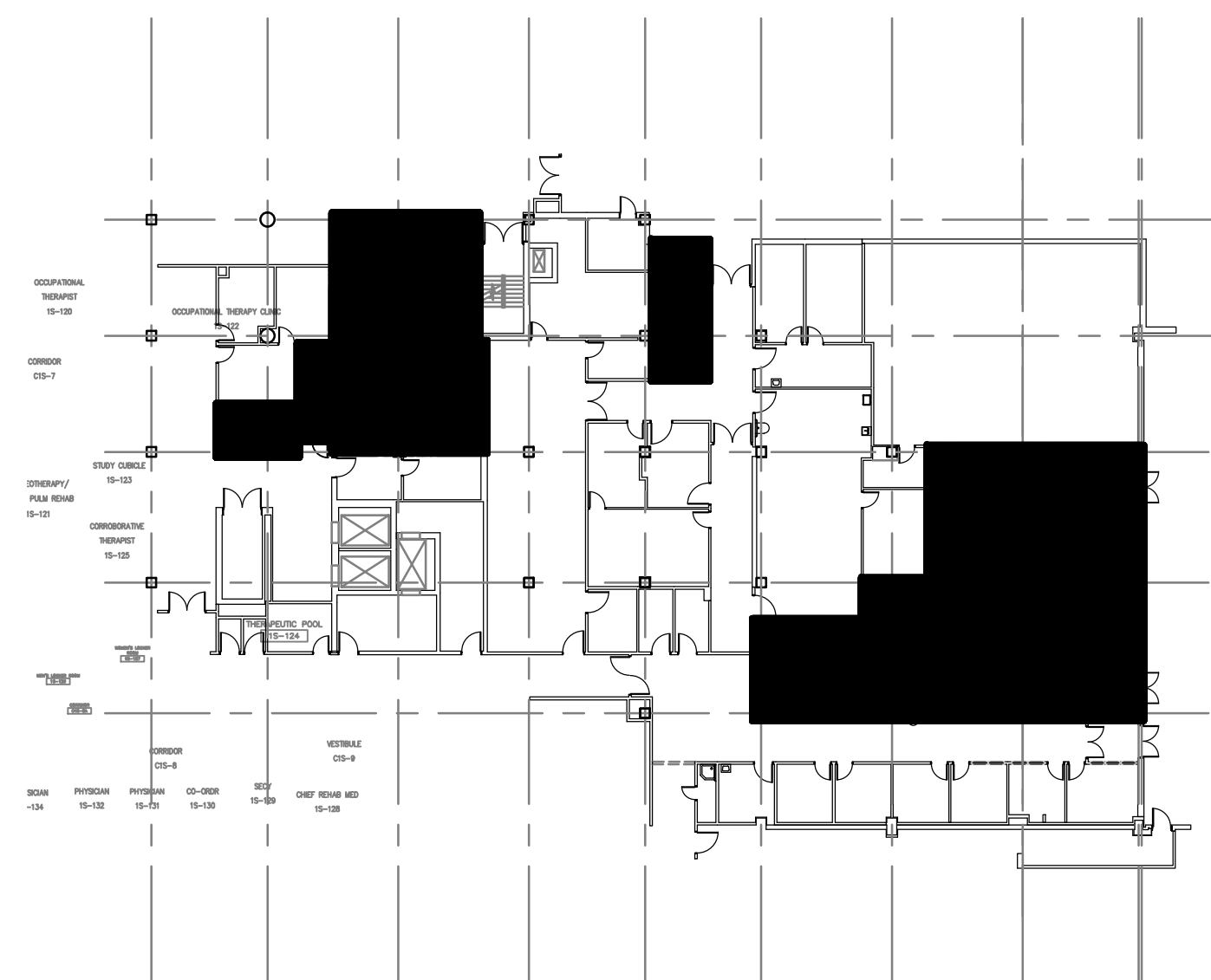
FIRST FLOOR PLAN - AREA 1 - FIRE ALARM PLAN
SCALE: 1/8"=1'-0"



FIRST FLOOR PLAN - AREA 2 - FIRE ALARM PLAN
SCALE: 1/8"=1'-0"



FIRST FLOOR PLAN - AREA 3 - FIRE ALARM PLAN
SCALE: 1/8"=1'-0"



KEY PLAN - PMR
NOT TO SCALE

LEGEND

- WALL MOUNTED SPEAKER/STROBE
- WALL MOUNTED STROBE
- DUCT SMOKE DETECTOR

GENERAL NOTES

- DEVICES IN THIS AREA CONNECTED TO FACP 2422/ZONE 6.

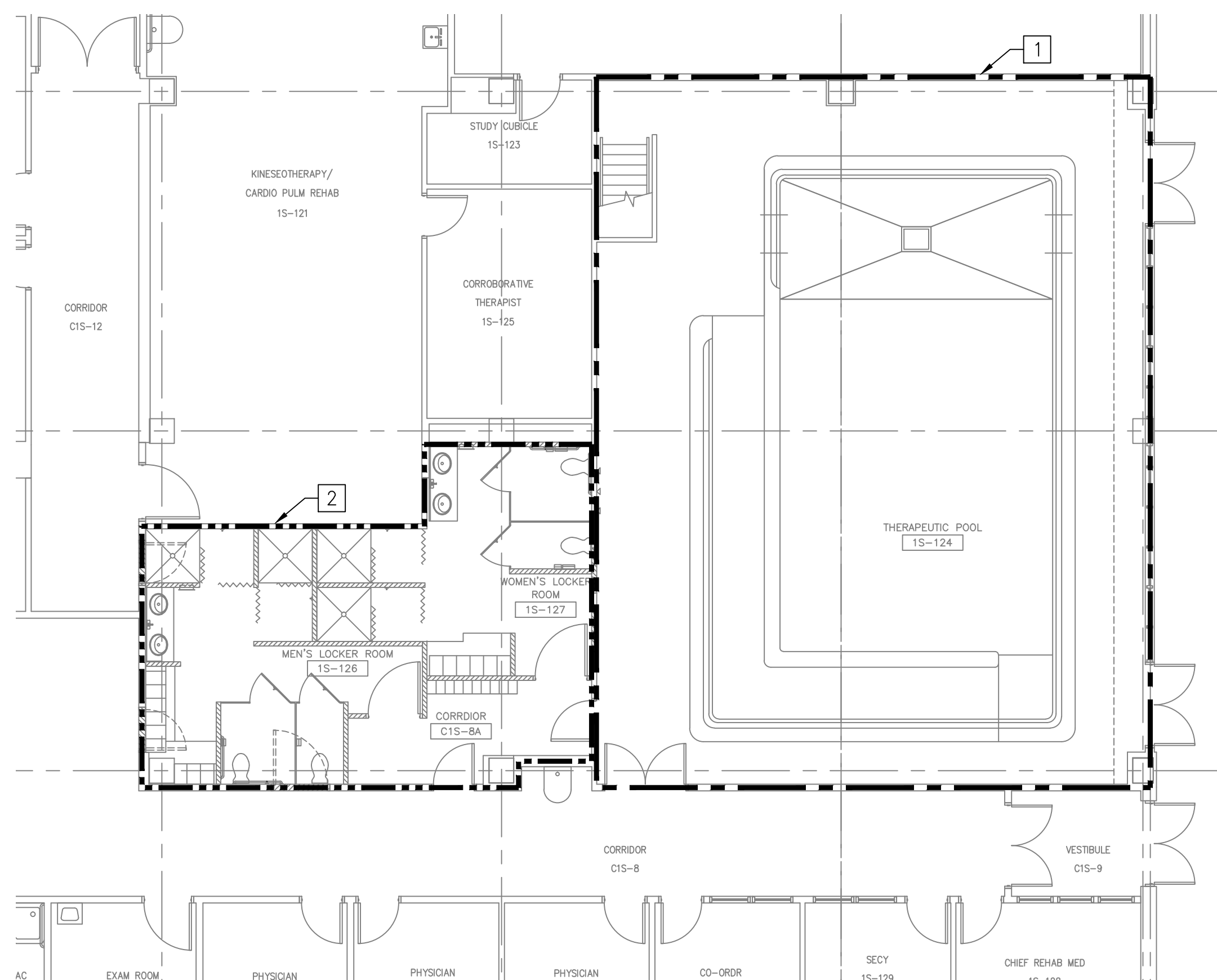
SHEET NOTES

- PROVIDE DUCT SMOKE DETECTORS FOR AHU-1 LOCATED ON ROOF.

--	--	--	--	--	--	--	--	--	--	--	--	--	--	--	--	--	--	--	--	--	--	--	--	--	--	--	--	--	--	--	--	--	--	--	--	--	--	--	--	--	--	--	--	--	--	--	--	--	--	--	--	--	--	--	--	--	--	--	--	--	--	--	--	--	--	--	--	--	--	--	--	--	--	--	--	--	--	--	--	--	--	--	--	--	--	--	--	--	--	--	--	--	--	--	--	--	--	--	--	--	--	--	--	--	--	--	--	--	--	--	--	--	--	--	--	--	--	--	--	--	--	--	--	--	--	--	--	--	--	--	--	--	--	--	--	--	--	--	--	--	--	--	--	--	--	--	--	--	--	--	--	--	--	--	--	--	--	--	--	--	--	--	--	--	--	--	--	--	--	--	--	--	--	--	--	--	--	--	--	--	--	--	--	--	--	--	--	--	--	--	--	--	--	--	--	--	--	--	--	--	--	--	--	--	--	--	--	--	--	--	--	--	--	--	--	--	--	--	--	--	--	--	--	--	--	--	--	--	--	--	--	--	--	--	--	--	--	--	--	--	--	--	--	--	--	--	--	--	--	--	--	--	--	--	--	--	--	--	--	--	--	--	--	--	--	--	--	--	--	--	--	--	--	--	--	--	--	--	--	--	--	--	--	--	--	--	--	--	--	--	--	--	--	--	--	--	--	--	--	--	--	--	--	--	--	--	--	--	--	--	--	--	--	--	--	--	--	--	--	--	--	--	--	--	--	--	--	--	--	--	--	--	--	--	--	--	--	--	--	--	--	--	--	--	--	--	--	--	--	--	--	--	--	--	--	--	--	--	--	--	--	--	--	--	--	--	--	--	--	--	--	--	--	--	--	--	--	--	--	--	--	--	--	--	--	--	--	--	--	--	--	--	--	--	--	--	--	--	--	--	--	--	--	--	--	--	--	--	--	--	--	--	--	--	--	--	--	--	--	--	--	--	--	--	--	--	--	--	--	--	--	--	--	--	--	--	--	--	--	--	--	--	--	--	--	--	--	--	--	--	--	--	--	--	--	--	--	--	--	--	--	--	--	--	--	--	--	--	--	--	--	--	--	--	--	--	--	--	--	--	--	--	--	--	--	--	--	--	--	--	--	--	--	--	--	--	--	--	--	--	--	--	--	--	--	--	--	--	--	--	--	--	--	--	--	--	--	--	--	--	--	--	--	--	--	--	--	--	--	--	--	--	--	--	--	--	--	--	--	--	--	--	--	--	--	--	--	--	--	--	--	--	--	--	--	--	--	--	--	--	--	--	--	--	--	--	--	--	--	--	--	--	--	--	--	--	--	--	--	--	--	--	--	--	--	--	--	--	--	--	--	--	--	--	--	--	--	--	--	--	--	--	--	--	--	--	--	--	--	--	--	--	--	--	--	--	--	--	--	--	--	--	--	--	--	--	--	--	--	--	--	--	--	--	--	--	--	--	--	--	--	--	--	--	--	--	--	--	--	--	--	--	--	--	--	--	--	--	--	--	--	--	--	--	--	--	--	--	--	--	--	--	--	--	--	--	--	--	--	--	--	--	--	--	--	--	--	--	--	--	--	--	--	--	--	--	--	--	--	--	--	--	--	--	--	--	--	--	--	--	--	--	--	--	--	--	--	--	--	--	--	--	--	--	--	--	--	--	--	--	--	--	--	--	--	--	--	--	--	--	--	--	--	--	--	--	--	--	--	--	--	--	--	--	--	--	--	--	--	--	--	--	--	--	--	--	--	--	--	--	--	--	--	--	--	--	--	--	--	--	--	--	--	--	--	--	--	--	--	--	--	--	--	--	--	--	--	--	--	--	--	--	--	--	--	--	--	--	--	--	--	--	--	--	--	--	--	--	--	--	--	--	--	--	--	--	--	--	--	--	--	--	--	--	--	--	--	--	--	--	--	--	--	--	--	--	--	--	--	--	--	--	--	--	--	--	--	--	--	--	--	--	--	--	--	--	--	--	--	--	--	--	--	--	--	--	--	--	--	--	--	--	--	--	--	--	--	--	--	--	--	--	--	--	--	--	--	--	--	--	--	--	--	--	--	--	--	--	--	--	--	--	--	--	--	--	--	--	--	--	--	--	--	--	--	--	--	--	--	--	--	--	--	--	--	--	--	--	--	--	--	--	--	--	--	--	--	--	--	--	--	--	--	--	--	--	--	--	--	--	--	--	--	--	--	--	--	--	--	--	--	--	--	--	--	--	--	--	--	--	--	--	--	--	--	--	--	--	--	--	--	--	--	--	--	--	--	--	--	--	--	--	--	--	--	--	--	--	--	--	--	--	--	--	--	--	--	--	--	--	--	--	--	--	--	--	--	--	--	--	--	--	--	--	--	--	--	--	--	--	--	--	--	--	--	--	--	--	--	--	--	--	--	--	--	--	--	--	--	--	--	--	--	--	--	--	--	--	--	--	--	--	--	--	--	--	--	--	--	--	--	--	--	--	--	--	--	--	--	--	--	--	--	--	--	--	--	--	--	--	--	--	--	--	--	--	--	--	--	--	--	--	--	--	--	--	--	--	--	--	--	--	--	--	--	--	--	--	--	--	--	--	--	--	--	--	--	--	--	--	--	--	--	--	--	--	--	--	--	--	--	--	--	--	--	--	--	--	--	--	--	--	--	--	--	--	--	--	--	--	--	--	--	--	--	--	--	--	--	--	--	--	--	--	--	--	--	--	--	--	--	--	--	--	--	--	--	--	--	--	--	--	--	--	--	--	--	--	--	--	--	--	--	--	--	--	--	--	--	--	--	--	--	--	--	--	--	--	--	--	--	--	--	--	--	--	--	--	--	--	--	--	--	--	--	--	--	--	--	--	--	--	--	--	--	--	--	--	--	--	--	--	--	--	--	--	--	--	--	--	--	--	--	--	--	--	--	--	--	--	--	--	--	--	--	--	--	--	--	--	--	--	--	--	--	--	--	--	--	--	--	--	--	--	--	--	--	--	--	--	--	--	--	--	--	--	--	--	--	--	--	--	--	--	--	--	--	--	--	--	--	--	--	--	--	--	--	--	--	--	--	--	--	--	--	--	--	--	--	--	--	--	--	--	--	--	--	--	--	--	--	--	--	--	--	--	--	--	--	--	--	--	--	--	--	--	--	--	--	--	--	--	--	--	--	--	--	--	--	--	--	--	--	--	--	--	--	--	--	--	--	--	--	--	--	--	--	--	--	--	--	--	--	--	--	--	--	--	--	--	--	--	--	--	--	--	--	--	--	--	--	--	--	--	--	--	--	--	--	--	--	--	--	--	--	--	--	--	--	--	--	--	--	--	--	--	--	--	--	--	--	--	--

CONSTRUCTION NOTES (THIS SHEET ONLY)

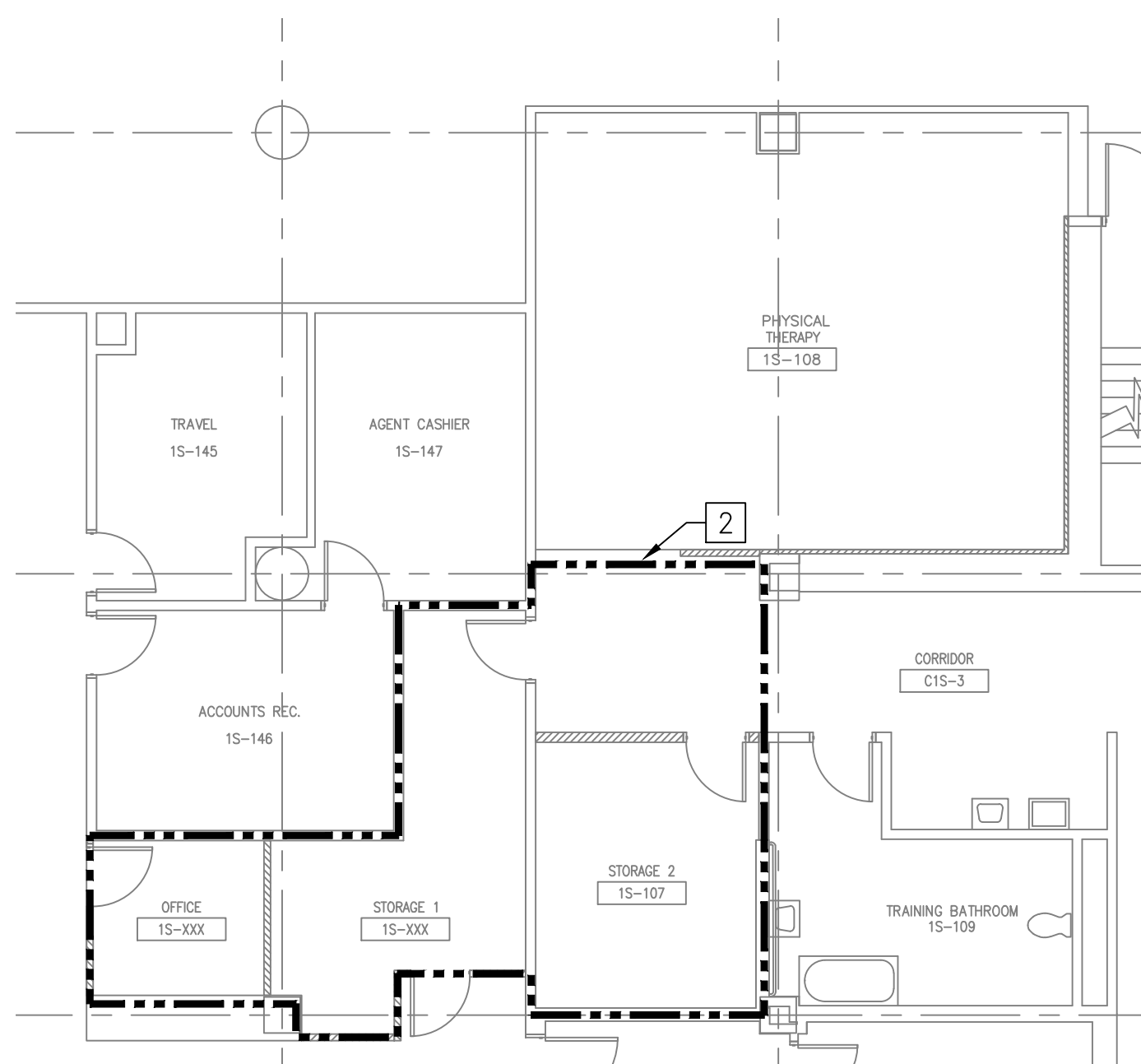
- 2 RECONFIGURE EXISTING SPRINKLER SYSTEM PIPING AND PROVIDE NEW SPRINKLERS WITHIN OUTLINED AREA.



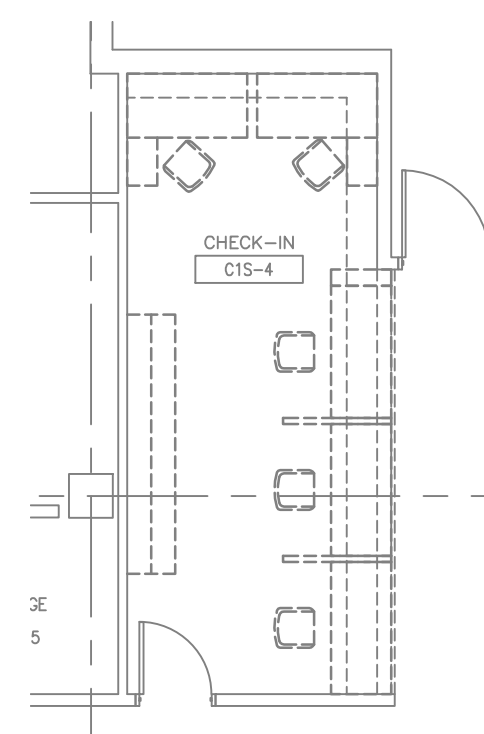
FIRST FLOOR PLAN - AREA 1 - FIRE SUPPRESSION PLAN

SCALE: 1/8"=1'-0"

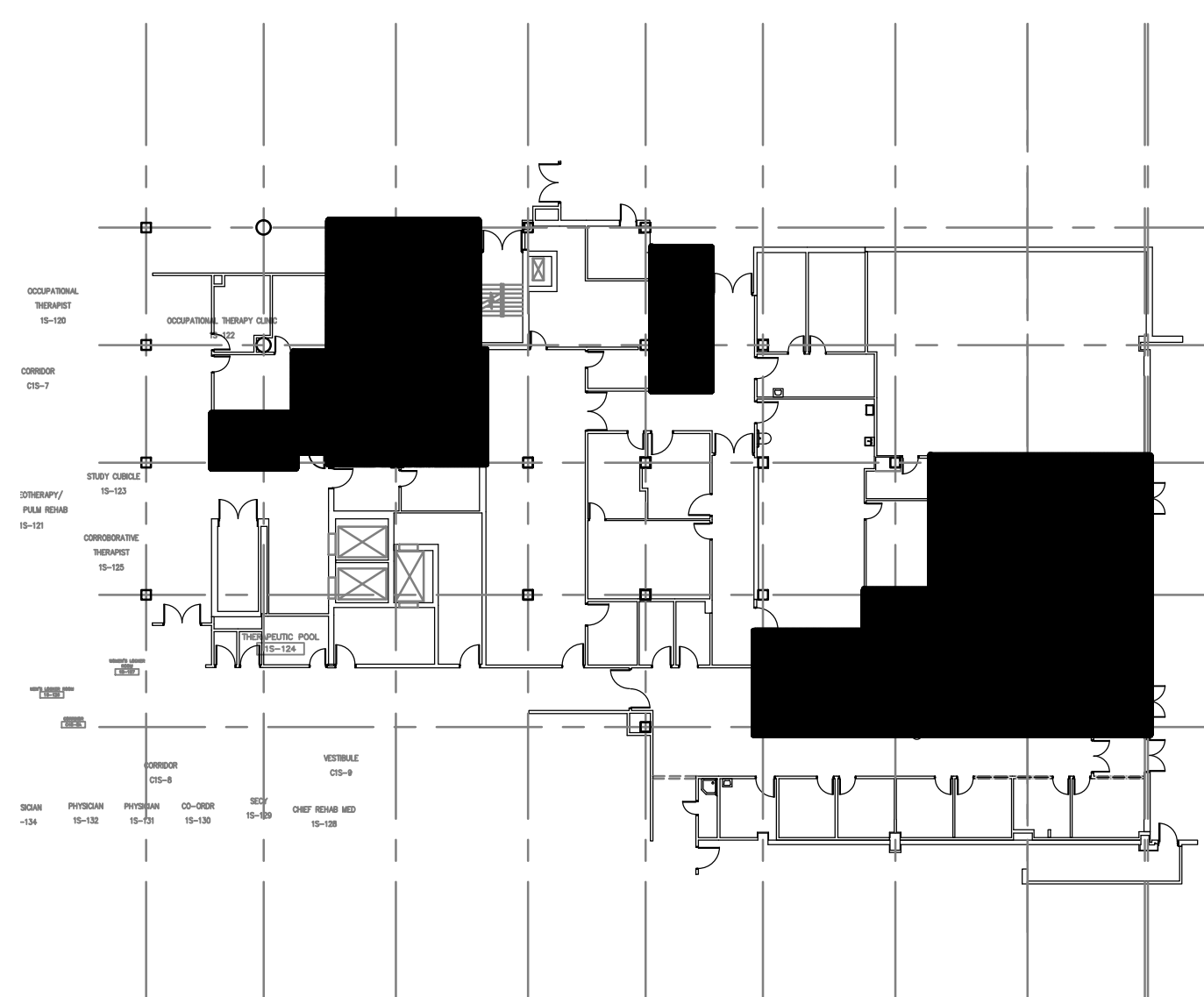
0 5' 10' 15' 20'



FIRST FLOOR PLAN - AREA 2 - FIRE SUPPRESSION PLAN



FIRST FLOOR PLAN - AREA 3 - FIRE SUPPRESSION PLAN
SCALE: 1/8"=1'-0" 0 5' 10' 15' 20'



KEY PLAN - PMR
NOT TO SCALE

[illegible]