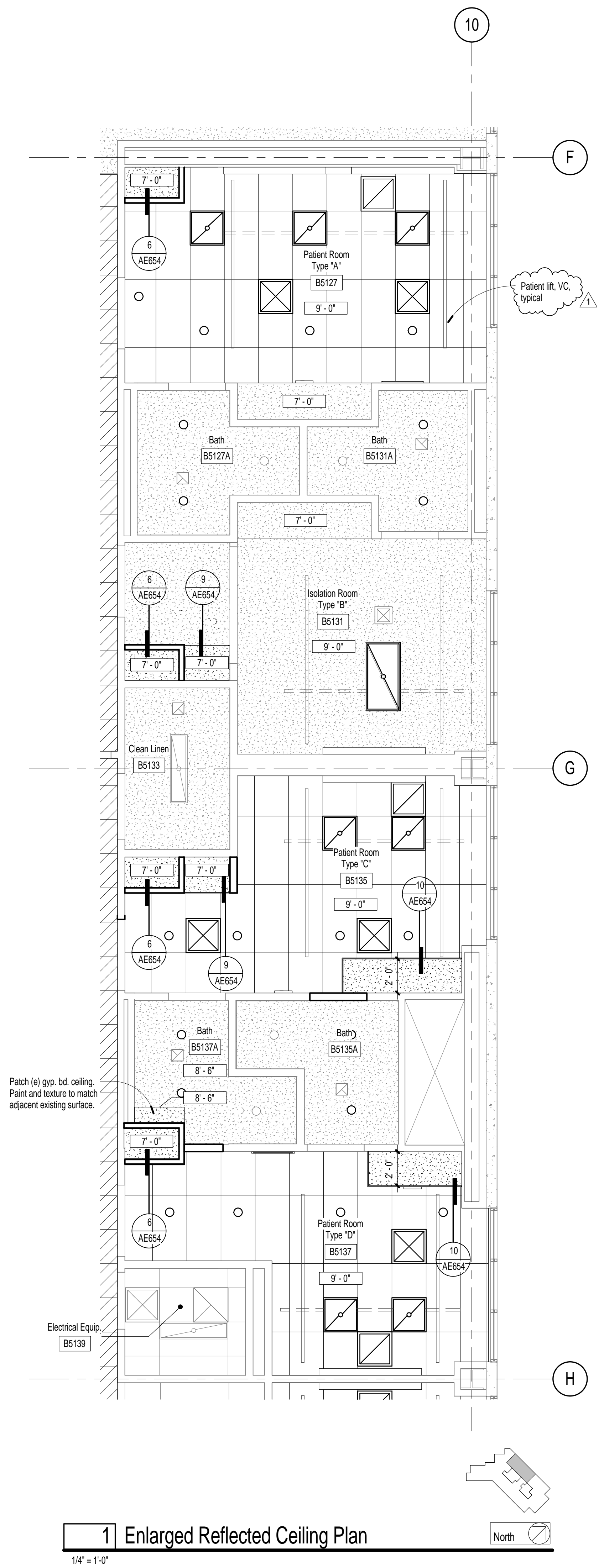
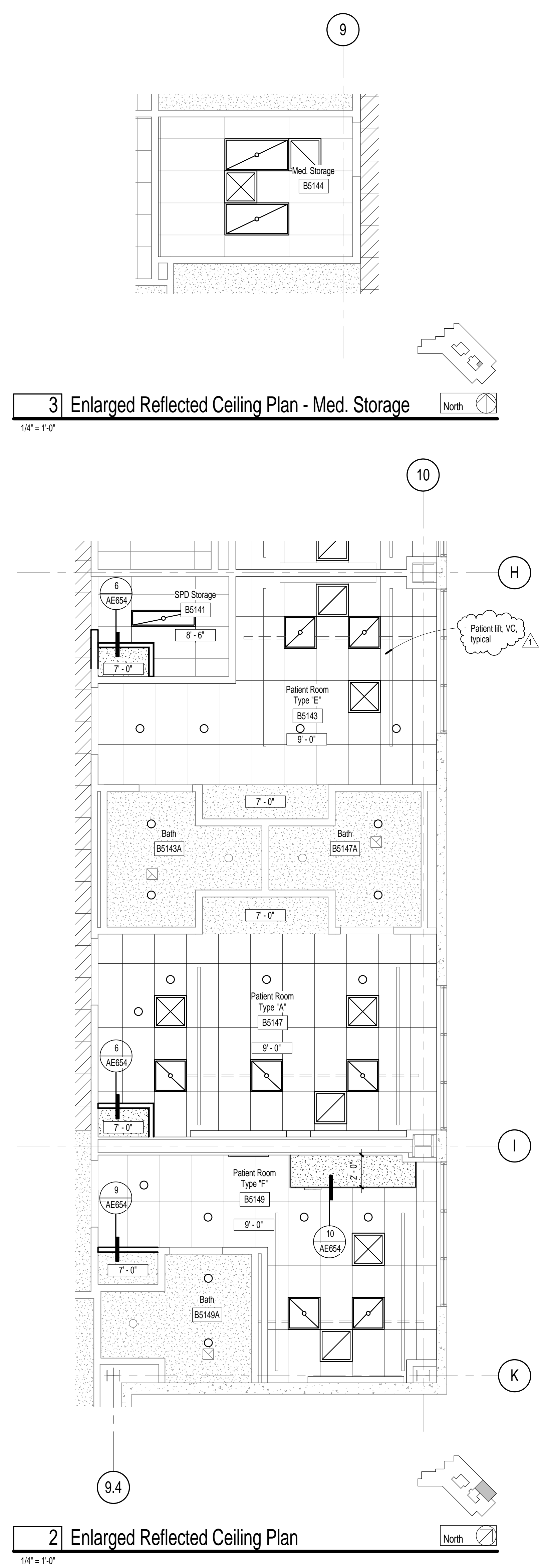
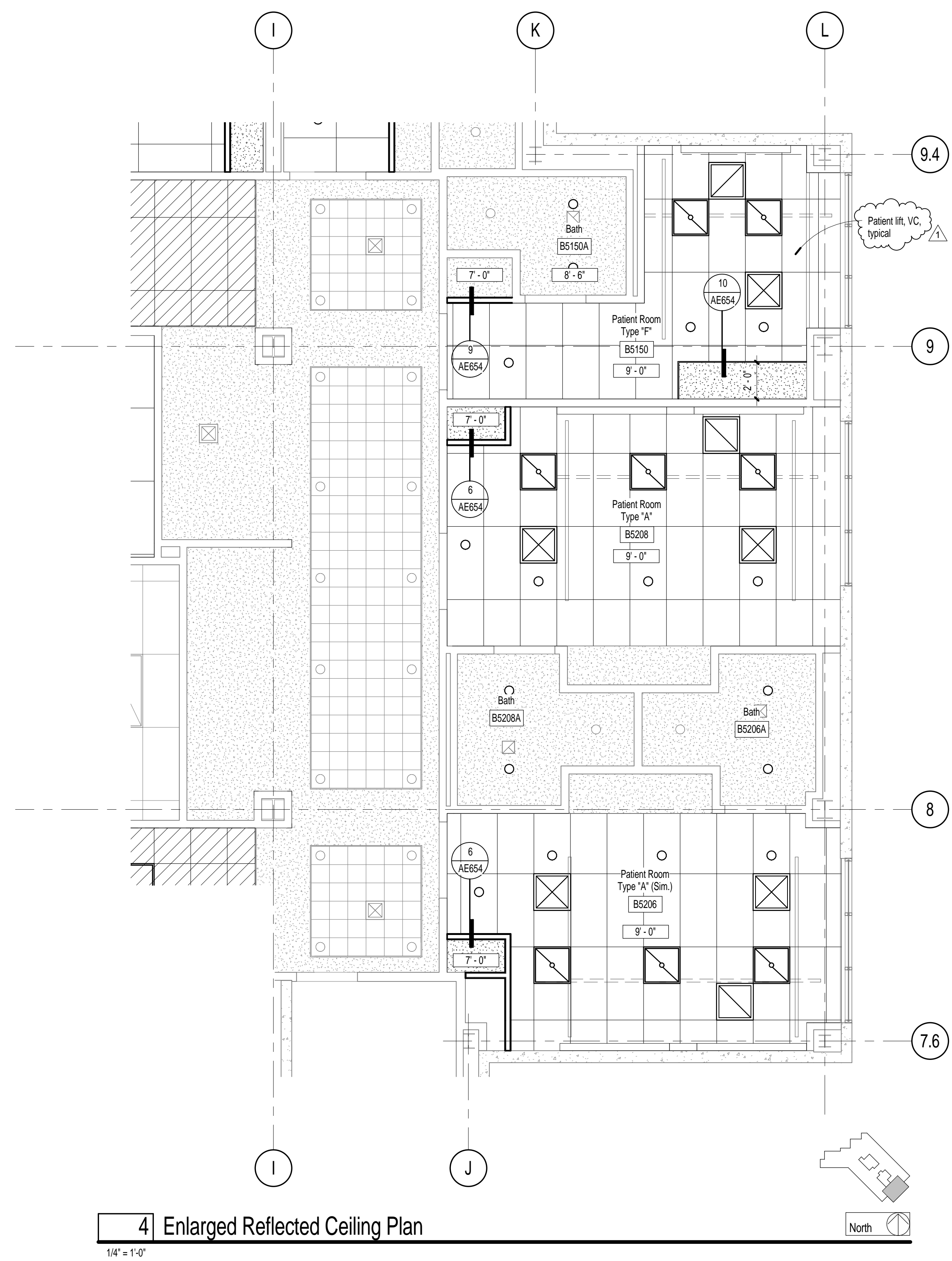


three inches = one foot.
 one and one half inches = one foot.
 one inch = one foot.
 three quarters inch = one foot.
 one half inch = one foot.
 three eighths inch = one foot.
 one quarter inch = one foot.
 one eighth inch = one foot.

Ceiling Plan Legend

- (e) Ceiling system and finishes to remain. Touch up and repair at ceilings affected by Alteration construction.
- Gypsum board ceiling, see Specifications for requirements. See suspended framing detail 3 / AE654
- 2 x 4 Acoustical Lay-in Ceiling System. Grid and tile layout as indicated on the Reflected Ceiling Plan. See Specifications for requirements of suspended grid and acoustic lay-in panels and see Finish Schedule for ceiling types. In rooms larger than 144 SF see detail 1 / AE654 for seismic bracing detail.
- 2 x 4 Acoustical Lay-in Ceiling Tiles in (e) grid.
- (e) 12' x 12' Acoustical Tile Ceiling System.
- Patient lift track, Arjo Maxi Sky 600 OFCI, refer to Structural drawings for bracing requirements
- Attic Draftstop
- Indicates the ceiling height, see Plan.
Ceiling height above finish floor.
- 1x4 Fluorescent light fixture - see Electrical for size and type
- 2x4 Fluorescent light fixture - see Electrical for size and type
- 2x2 Fluorescent light fixture - see Electrical for size and type
- Recessed can light fixture - see Electrical for size and type
- Supply air diffuser - see Mechanical for size and type
- Return air diffuser - see Mechanical for size and type
- Exhaust air grille - see Mechanical for size and type
- Access door - see Project Manual for configuration and type. Door shall be rated in accordance with the rating of the ceiling it is installed within.

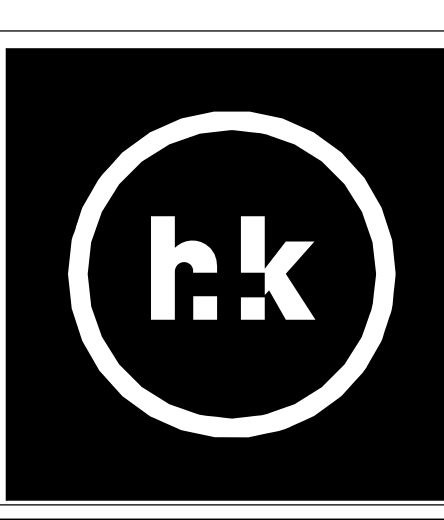


Number	Revision	Date
1	Addendum #1	11/25/13

CONSULTANTS:



ARCHITECT/ENGINEERS:
H+K ARCHITECTS
 5485 Reno Corporate Drive, Suite 100
 Reno, Nevada 89511-2262
 P 775+332+6640
 F 775+332+6642
 hkarchitects.com



Drawings Title
Enlarged Reflected Ceiling Plans
 Approved: Project Director

Project Title
 Renovation of 4C/5th Floor
 to Single Patient Rooms
 Location
 975 Kirman Avenue, Reno NV 89520
 Date
 August 22, 2013
 Checked
 MMH
 Drawn
 EL

Project Number
 654-12-724
 Building Number
 Bldg. 12
 Drawing Number
AE652

Office of
 Construction
 and Facilities
 Management

Bid Documents