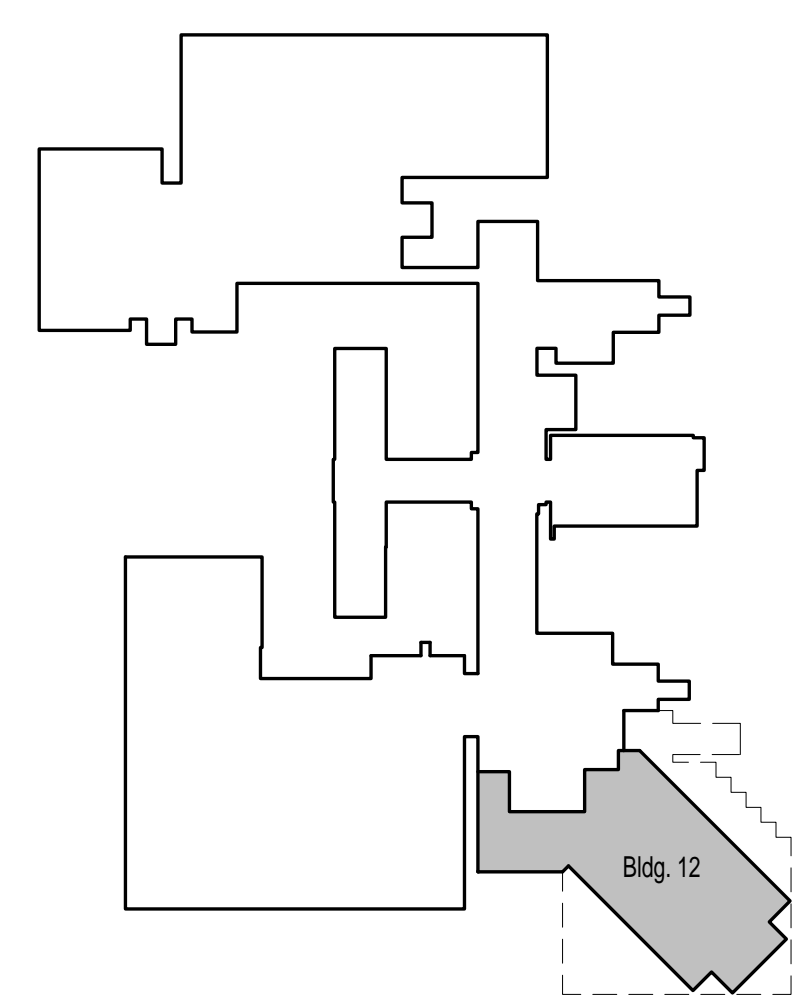
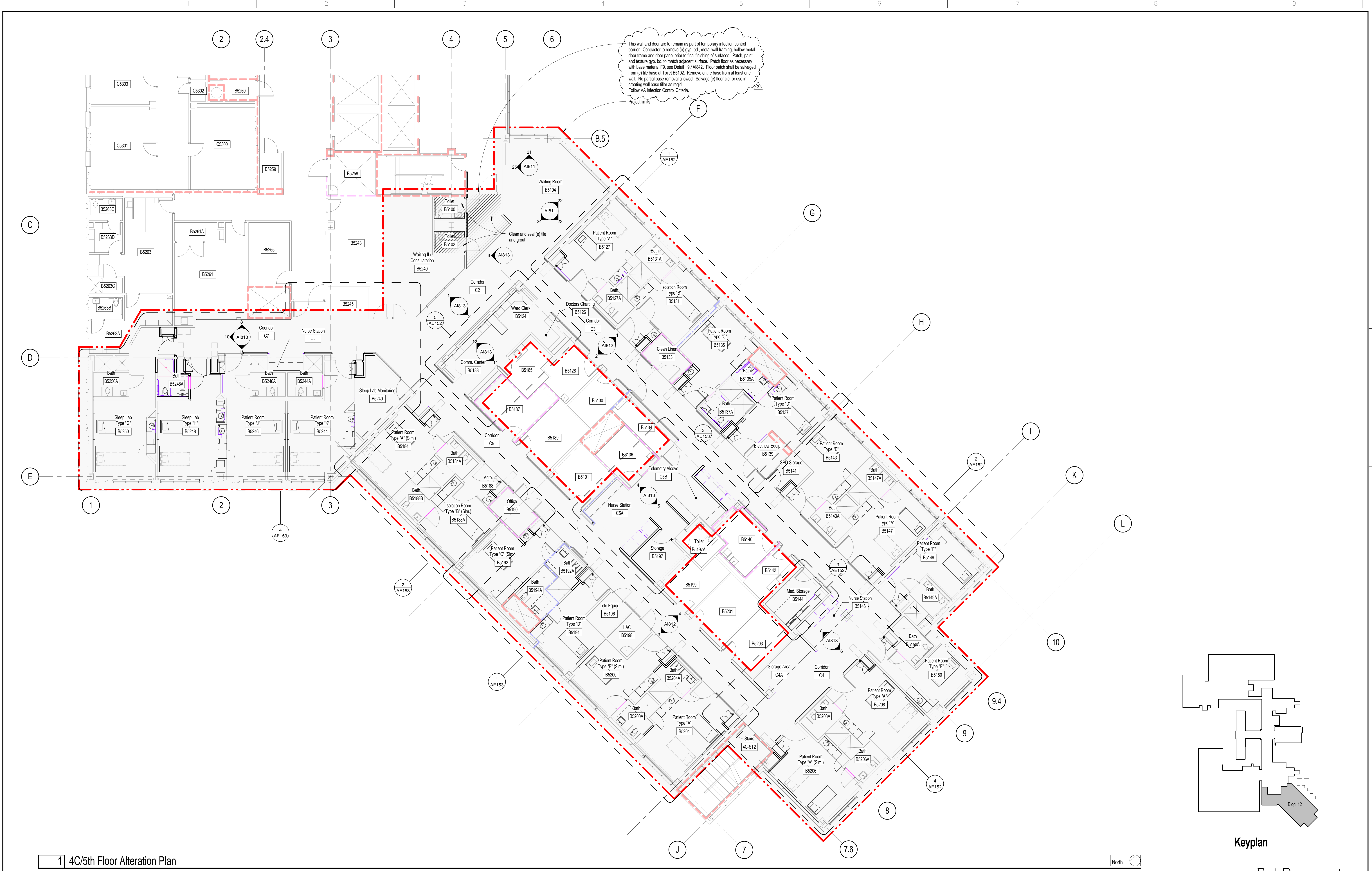


three inches = one foot
one and one half inches = one foot
one inch = one foot
three quarters inch = one foot
one half inch = one foot
three eighths inch = one foot
one quarter inch = one foot
one eighth inch = one foot
one sixteenth inch = one foot



Keyplan

1 4C/5th Floor Alteration Plan

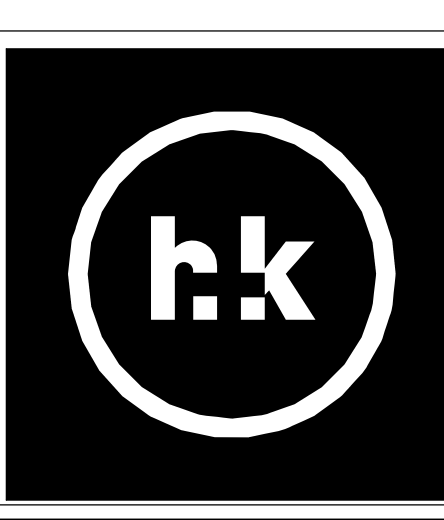
1/8" = 1'-0"

Number	Revision	Date
3	Addendum #3	12/05/13

CONSULTANTS:



ARCHITECT/ENGINEERS:
H+K ARCHITECTS
5485 Reno Corporate Drive, Suite 100
Reno, Nevada 89511-2262
P 775-332-6640
F 775-332-6642
hkarchitects.com



Drawings Title
4C/5th Floor Alteration Plan
Approved: Project Director

Project Title
Renovation of 4C/5th Floor
to Single Patient Rooms
Location
975 Kirman Avenue, Reno NV 89520
Date
August 22, 2013
Checked
MMH
Drawn
EL

Project Number
654-12-724
Building Number
Bldg. 12
Drawing Number
AE151

Office of
Construction
and Facilities
Management
Department of
Veterans Affairs

Bid Documents